

Chesapeake Bay Tracking and Verification: National Environmental Information Exchange Network

Katherine Antos

Water Quality Coordinator

U.S. EPA Chesapeake Bay Program Office

Attachment B

Water Quality Goal Implementation Team

July 6, 2010

- BMP Type and location (NUE output supplied)
- Land acres
- Remote Sensing, NASS Crop land Data layer
- Crop acre
- Yield
- Animal Numbers (Ag Census or state supplied)
- Land applied biosolids
- Septic system (#s)

Inputs

- BMP types and efficiencies
- Land use change (BMPs, others)
- RUSLE2 Data: % Leaf area and residue cover
- Plant and nutrient densities
- Best potential yield
- Animal factors (weight, hygiene, feed, animal care, manure composition)
- Crop application rates and timing
- Plant and soil time
- Time in pasture
- Storage loss
- Volatilization
- Animal manure to crops
- N fixation
- Septic delivery factors

Parameters

- BMPs, # and location
- Land use
- % Bare soil, available to erode
- Nutrient uptake
- Manure and chemical fertilizer (lb/segment)
- N fixation (lb/segment)
- Septic loads

Outputs

Myths and Facts About BMP Tracking

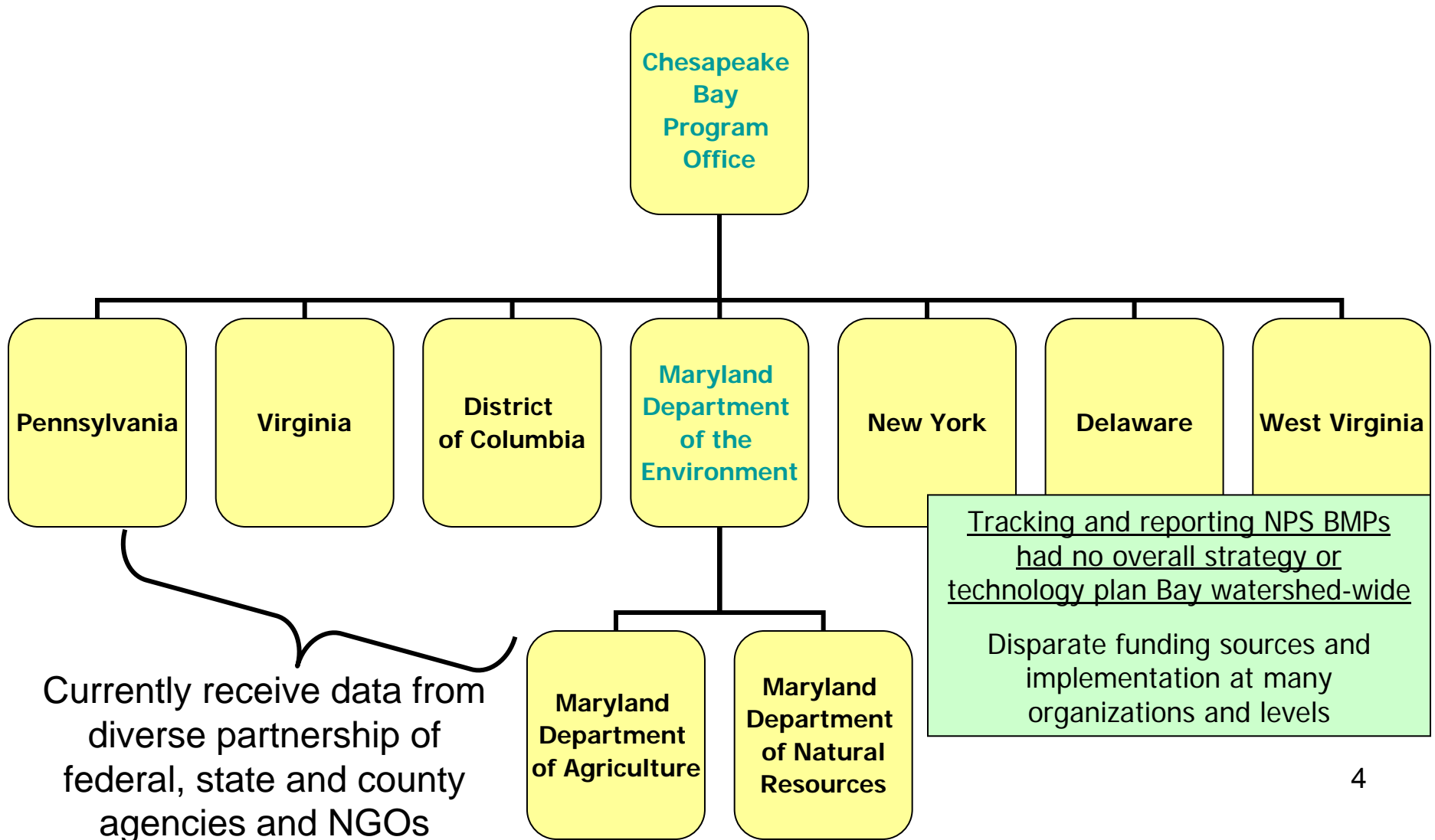
- **Myth:** No credit for new practices
- **Fact:** False—follow the CBP protocol=>to receive credit for new approved practice
- **Myth:** EPA won't credit previously unreported, recent practices
- **Fact:** False—practices that meet EPA expectations for tracking and verification and were implemented after 2005 will receive credit
- **Myth:** Practices reported by non-governmental organizations won't be credited
- **Fact:** False—if NGOs connect to NEIEN via the appropriate state and meet EPA expectations for tracking and verification, will receive credit

Tracking and Verification Take- Home

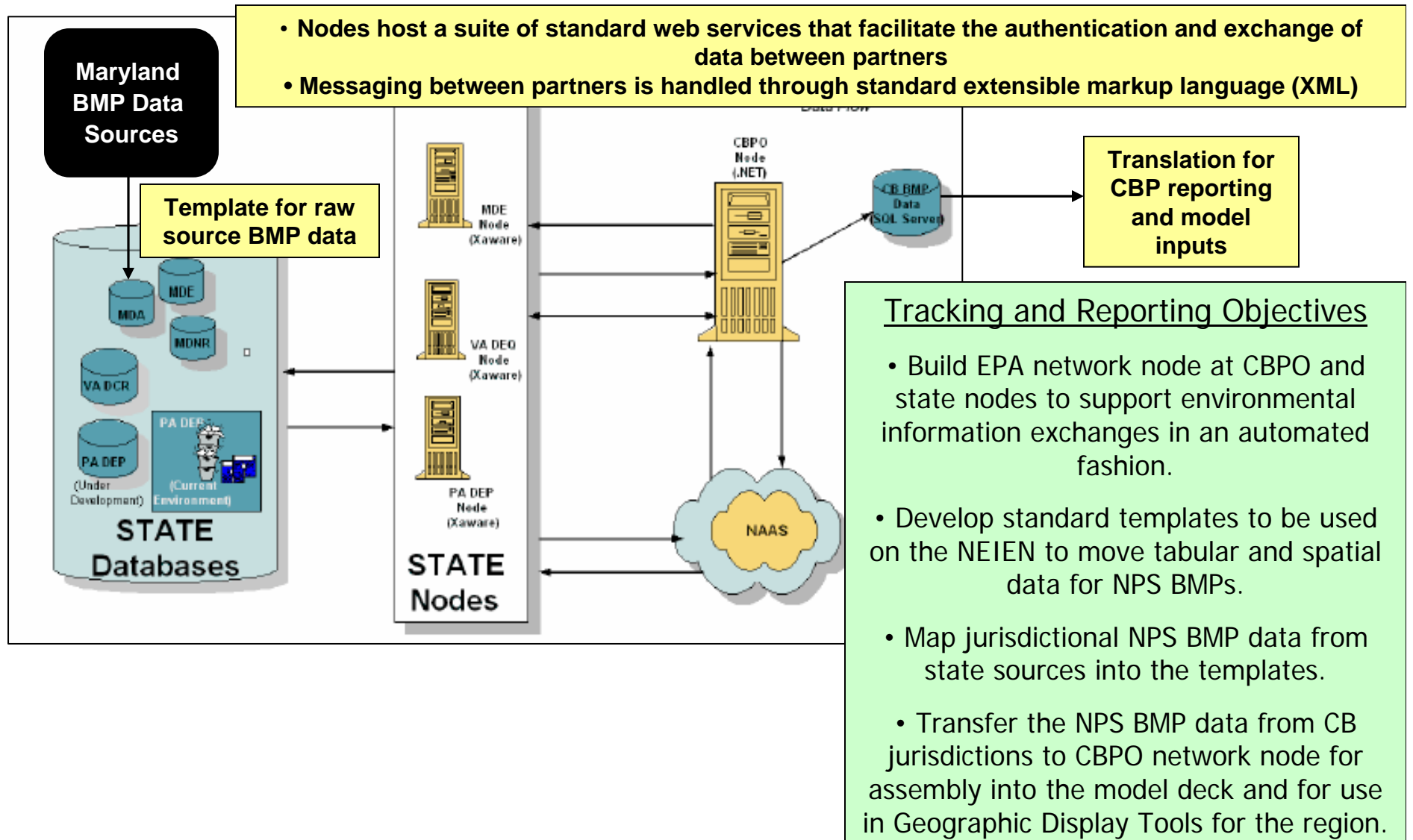
- BayTAS being developed to use NEIEN as primary source of non-WWTP BMP data
- BayTAS will incorporate verification
- BayTAS will be used to track TMDL and 2-year milestone progress
- Jurisdictions will not receive full credit for implementation actions if they are not using NEIEN or demonstrating verification

What is NEIEN?

Current BMP Data Flow



Future BMP Data Flow: NEIEN



Why Use NEIEN?

- Chesapeake Bay Implementation Grant Guidance
- WIP Expectations
- Scenario Builder Version 3.0
 - Conversion of NEIEN BMP exchange data into Scenario Builder formats
- Bay TMDL Tracking System
 - Will be compatible w/ ChesapeakeStat and Chesapeake Registry

When to Use NEIEN?

- Chesapeake Bay Program will use only NEIEN for non-WWTP data in the 2010 Progress Run due December 31, 2010
- Work with TetraTech, TreCom and Chesapeake Bay Program now to ensure NEIEN is fully operational

Questions

- Katherine Antos
 - Antos.katherine@epa.gov
- Marty Hurd
 - martin.hurd@tetrattech.com
- Nancie Imler
 - nimler@trecomsystems.com