



Chesapeake Bay Forestry Workgroup

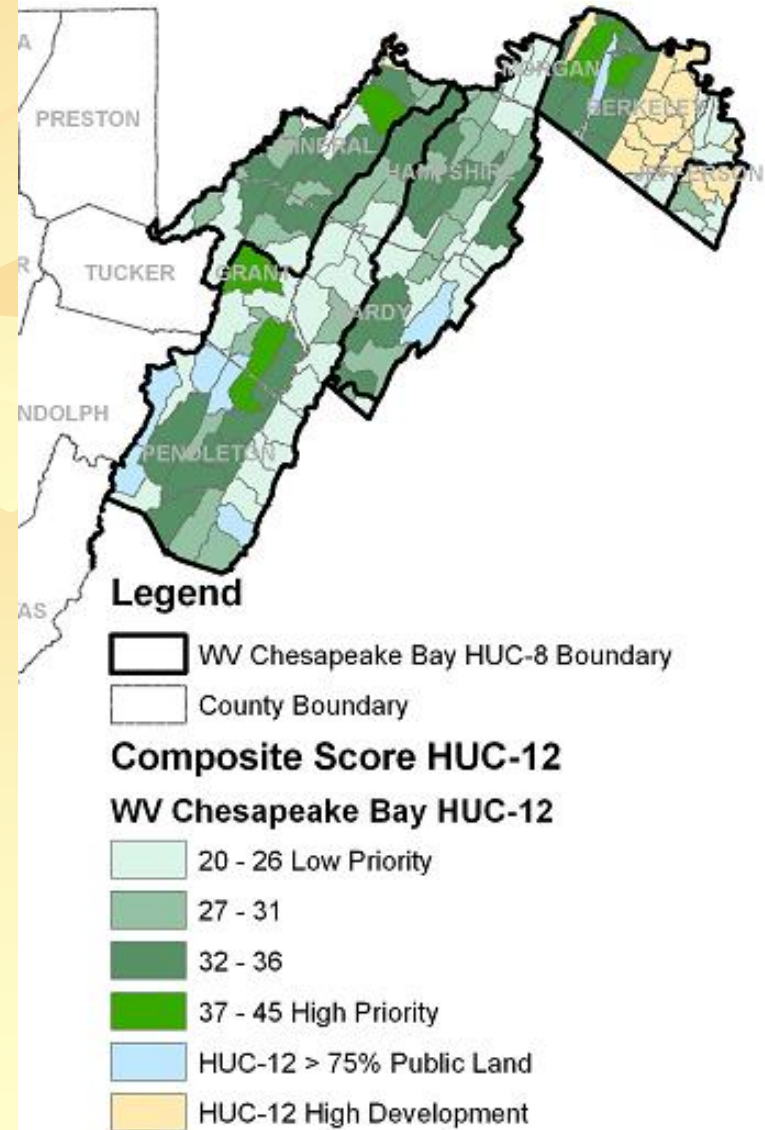
Agroforestry Team Meeting

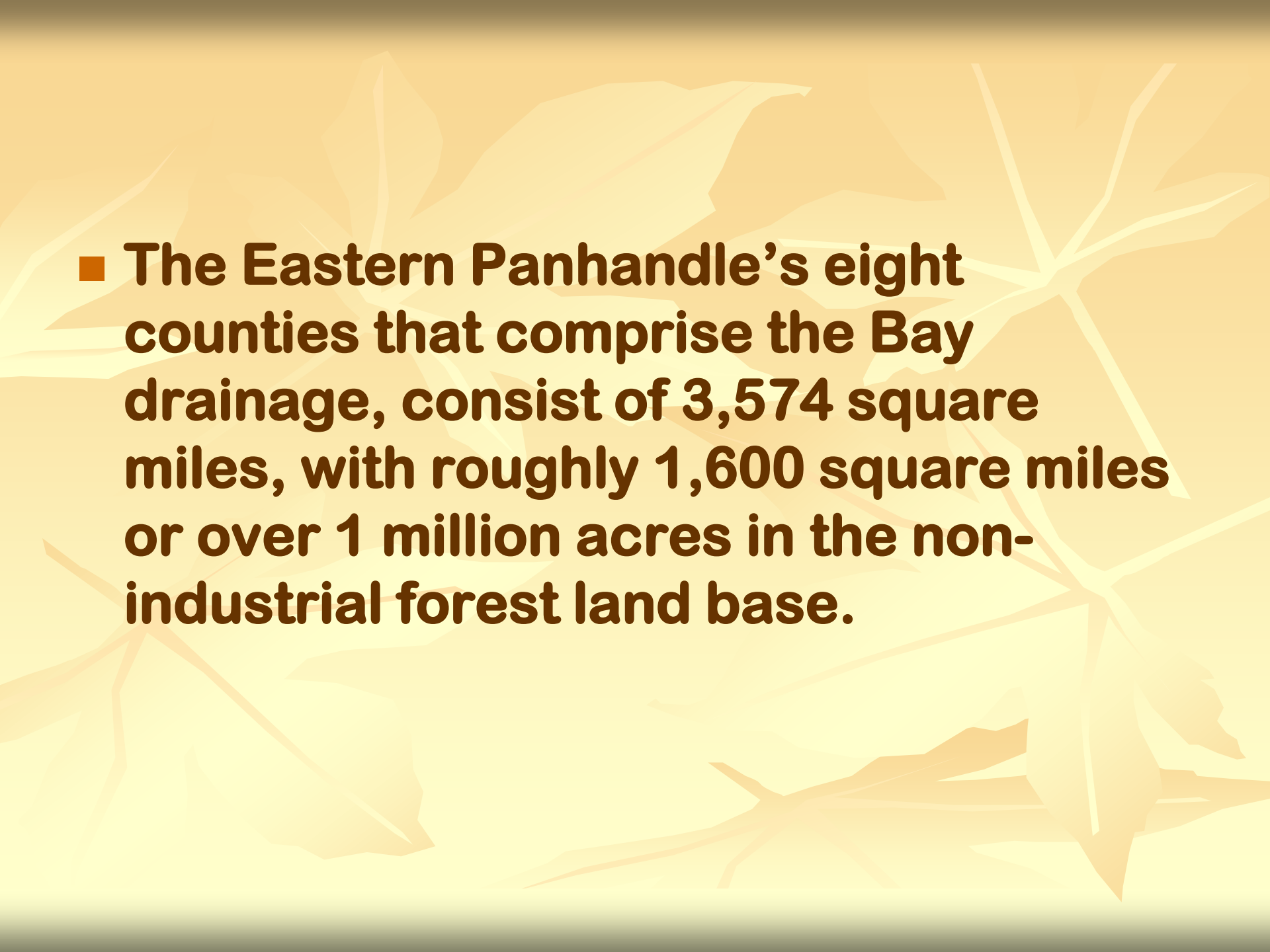
May 7-8, 2014

WV presentation

- **West Virginia contains 24,640 square miles, of which approximately 19,200 square miles (78%) are forested, making WV the third most heavily forested state in the nation. Eighty-eight percent (88%) of WV's timberland is held by private landowners,**

Wv's bay portion of the watershed



- 
- **The Eastern Panhandle's eight counties that comprise the Bay drainage, consist of 3,574 square miles, with roughly 1,600 square miles or over 1 million acres in the non-industrial forest land base.**

West Virginia Ginseng and Goldenseal



Black Cohosh



Other Mountain Roots of Appalachia

- Wild Yam
- Poke Root
- Blood Root
- Stone Root
- Solomon's Seal
- Pink Lady Slipper
- Gentian
- Yellow Root
- Sassafras

Mushrooms

- Shiitake
- Chanterelle
- Morel
- Pine mushroom
- Sweet tooth
- Fried chicken
- Shaggy mane
- Puffballs



Maple Syrup



- Sugar maple
- Black maple
- Red maple
- Silver maple
- Boxelder

West Virginia

- **WV Herb Association – Jackson’s Mills 4-H
Sept 2014**
- **Agroforestry workshop April 26 – Tygart CD**
- **WV Maple Syrup Association - new**
- **Division of Forestry certifies ginseng**
- **Mushrooms – no organized group**
- **WVU Extension workshops**
- **Silvopasture research by ARS**

Timber Harvest on Farm



Cacapon River Valley Pasture



Cacapon River Valley Hayfield



Pasture on North River



Grazing Vs Feeding, CAFO?



Grazing with a CREP Buffer



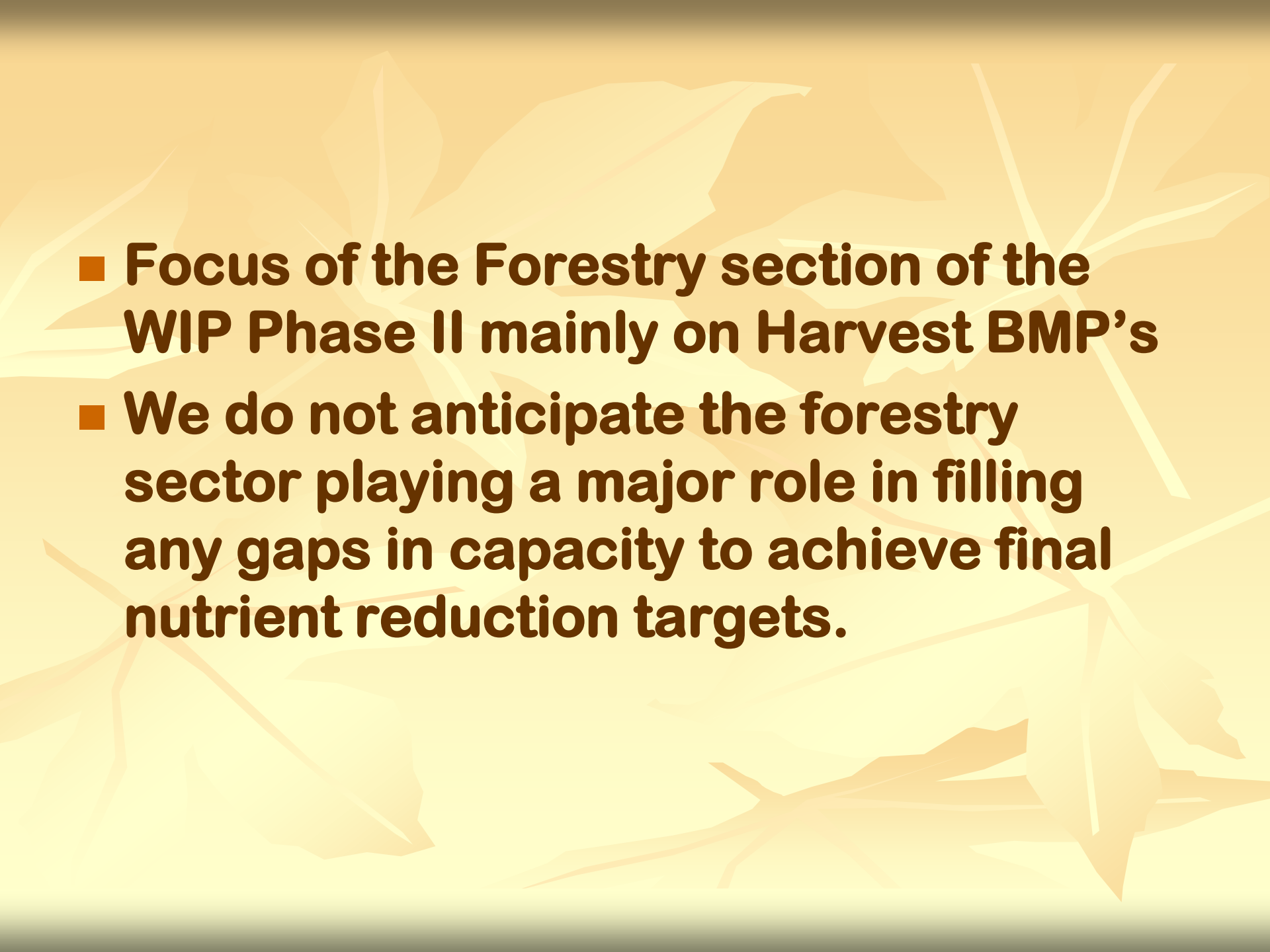
Tree damage and Barberry



- **There is no mention of Agroforestry in the WV WIP, nor is there anyone emphasizing Silvo-pasture**
- **The emphasis should probably be more on the forestry sector rather than Ag.**

Ag emphasis in WIP

- **Comparison of the WV 2017 WIP scenario with the 2009 progress scenario reveals sharp implementation increases for the animal waste management system and mortality composting BMPs. The increases are related to West Virginia's planned efforts to implement CAFO regulations under which large and medium operations will have to implement those BMPs.**
- **Other BMP's being reported related to Ag are Buffers of course, and windrows (agricultural enhancement)**

- 
- **Focus of the Forestry section of the WIP Phase II mainly on Harvest BMP's**
 - **We do not anticipate the forestry sector playing a major role in filling any gaps in capacity to achieve final nutrient reduction targets.**