

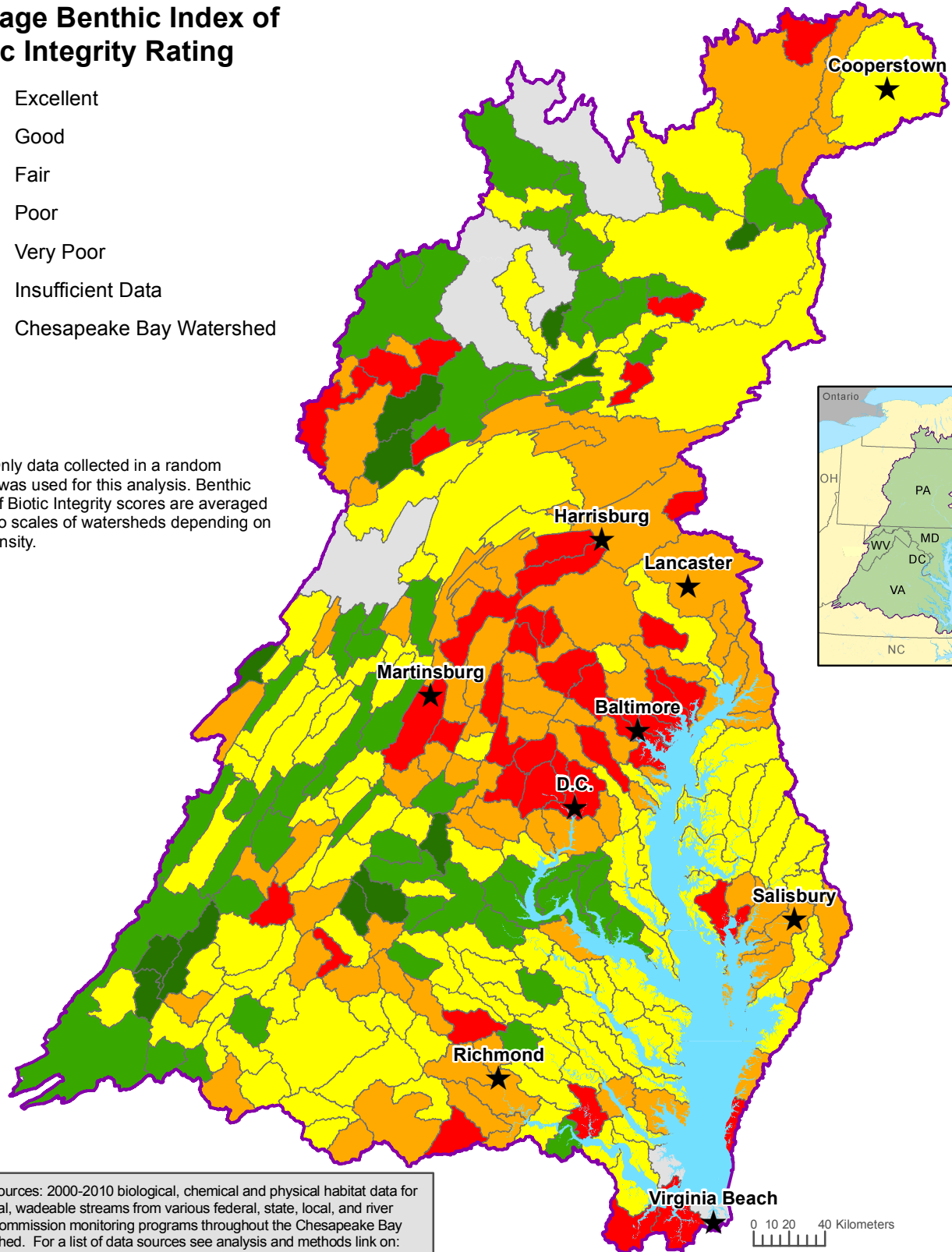
# Average 2000-2010 Stream Health in Chesapeake Bay Sub-watersheds



## Average Benthic Index of Biotic Integrity Rating



Note: Only data collected in a random design was used for this analysis. Benthic Index of Biotic Integrity scores are averaged over two scales of watersheds depending on data density.



Data Sources: 2000-2010 biological, chemical and physical habitat data for non-tidal, wadeable streams from various federal, state, local, and river basin commission monitoring programs throughout the Chesapeake Bay Watershed. For a list of data sources see analysis and methods link on: [http://www.chesapeakebay.net/status\\_streamhealth.aspx](http://www.chesapeakebay.net/status_streamhealth.aspx)

