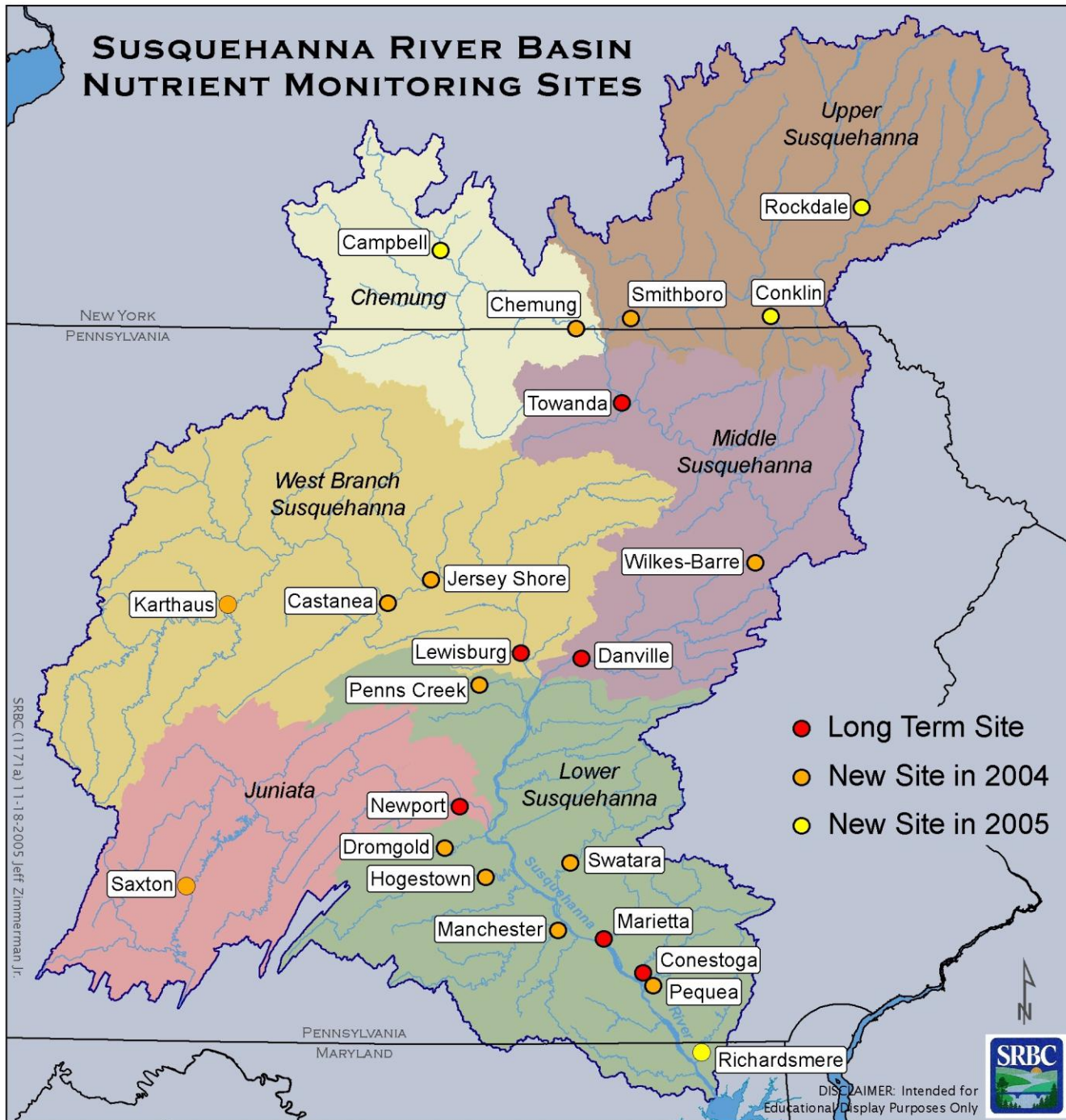


2010  
NYSDEC/SRBC  
Non-Tidal  
Sampling

# SUSQUEHANNA RIVER BASIN NUTRIENT MONITORING SITES



SRBC (11/71 a) 11-18-2005 Jeff Zimmerman Jr.

- Long Term Site
- New Site in 2004
- New Site in 2005



DISCLAIMER: Intended for Educational/Display Purposes Only

## New York Parameters

- Total and Dissolved Kjeldahl Nitrogen
- Total and Dissolved Ammonia
- Total and Dissolved Nitrate+Nitrite
- Total and Dissolved Phosphorus
- Total and Dissolved Orthophosphate
- Total Organic Carbon
- Sediment (SS, Sand/Fine)

Station	2011 Sample Numbers					2011 Storm Samples			
	Goal	Total	Missed	Month	Storm	Jan-Mar	Apr-Jun	Jul-Sept	Nov-Dec
<b>Unadilla at Rockdale</b>	20	19	3	11	6	2	1	2	1
<b>Susquehanna at Conklin</b>	20	18	2	11	7	2	1	3	1
<b>Susquehanna at Smithboro</b>	20	19	3	11	6	2		3	1
<b>Chemung at Chemung</b>	20	19	3	11	6	2	1	2	1
<b>Cohocton at Campbell</b>	20	19	3	11	6	2	1	2	1
<b>Total samples</b>	100	86	1	55	31	10	4	12	5