

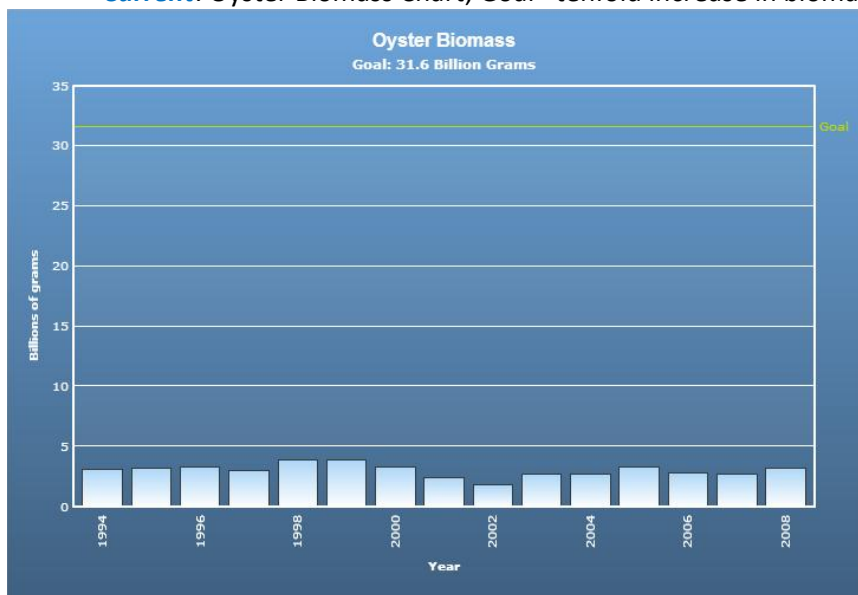
CBP Fisheries Indicators Discussion

11/18/13

The following indicators tracked in the Chesapeake Bay Program website need to be reviewed and updated to ensure they represent the most accurate information possible. At their October 2013 meeting, the Management Board asked the Fisheries GIT Ex Comm to recommend how each indicator should be displayed and tracked. The Ex Comm had a similar discussion about the striped bass and menhaden indicators last year at their November 2012 meeting.

Native Oyster Abundance (Bay Health) http://www.chesapeakebay.net/indicators/indicator/native_oyster_abundance

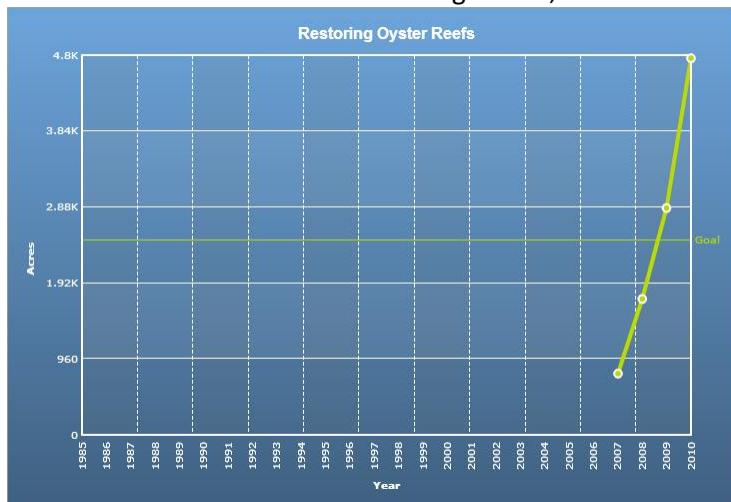
- **Current:** Oyster Biomass Chart; Goal= tenfold increase in biomass based on 1994 levels



- **Concerns:** outdated goal; now use tributary-based approach instead of baywide abundance
 - **Proposed Changes:**
 1. Jurisdictional surveys – spat set and/or disease data?
 2. Link to NOAA's Oyster Data Tool <http://chesapeakebay.noaa.gov/products/oyster-decision-support-tool>
 3. Results of Population Assessment (VIMS, R. Mann)
-

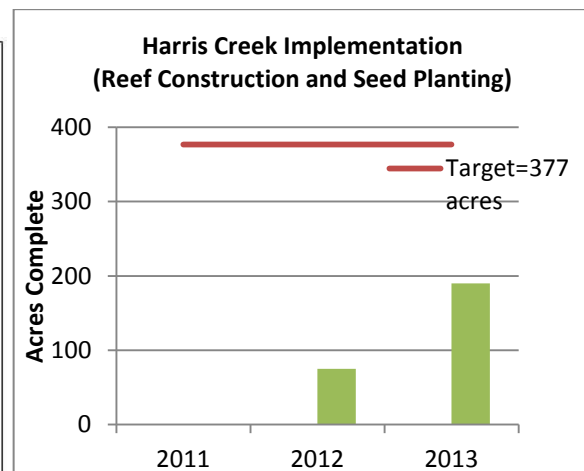
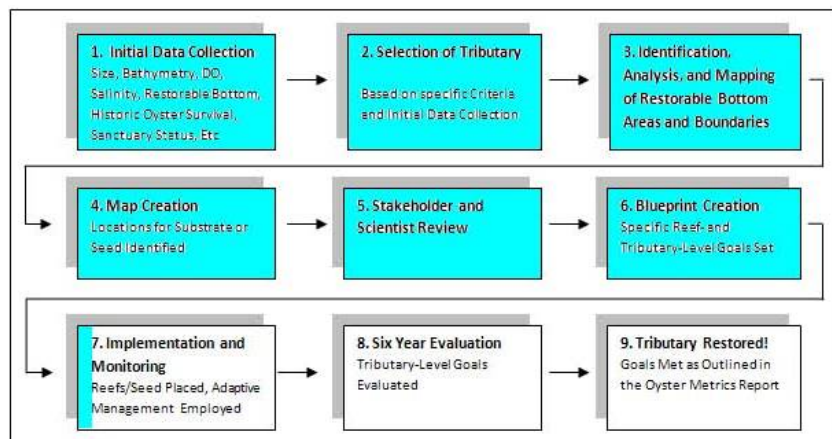
Restoring Native Oyster Reefs (Bay Health) http://www.chesapeakebay.net/indicators/indicator/restoring_oyster_reefs

- **Current:** Restored Reef Acreage chart; Goal= restore 2,466 acres between 2007-2010



- **Concerns:** outdated goal; now use a tributary-based approach instead of overall acres;
- **Proposed Changes:**
 - Develop a table that shows the steps to tributary restoration (plan, implementation, evaluate) and shows the identified tributaries and their progress along these steps. See example below that shows the progress for Harris Creek.
 - For tributaries in the implementation phase, include acreage chart (see example below)
 - Use the text on the webpage to explain how restoration goals have changed from acreage to tributary approach.

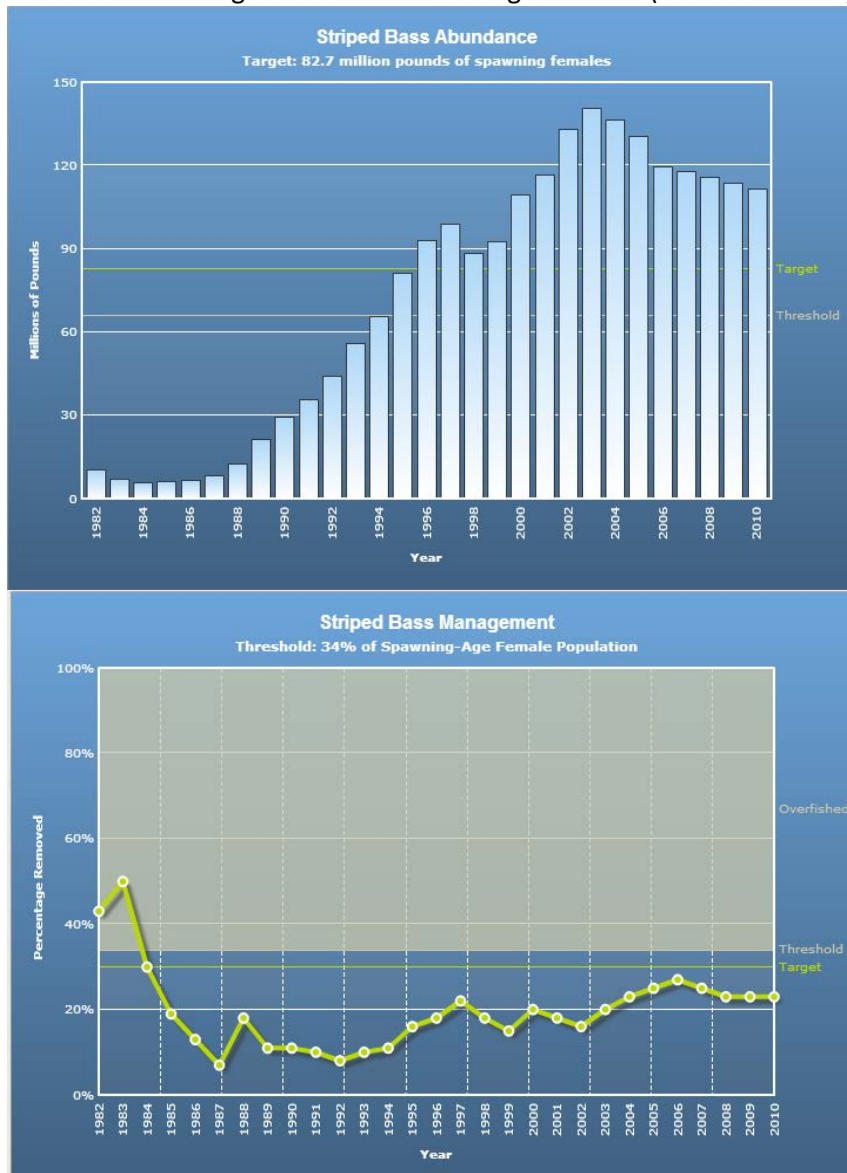
<http://chesapeakebay.noaa.gov/oysters/oyster-restoration-in-harris-creek>



	Step 1	Step 2	Step 3...
Trib A			
Trib B			
Trib C			

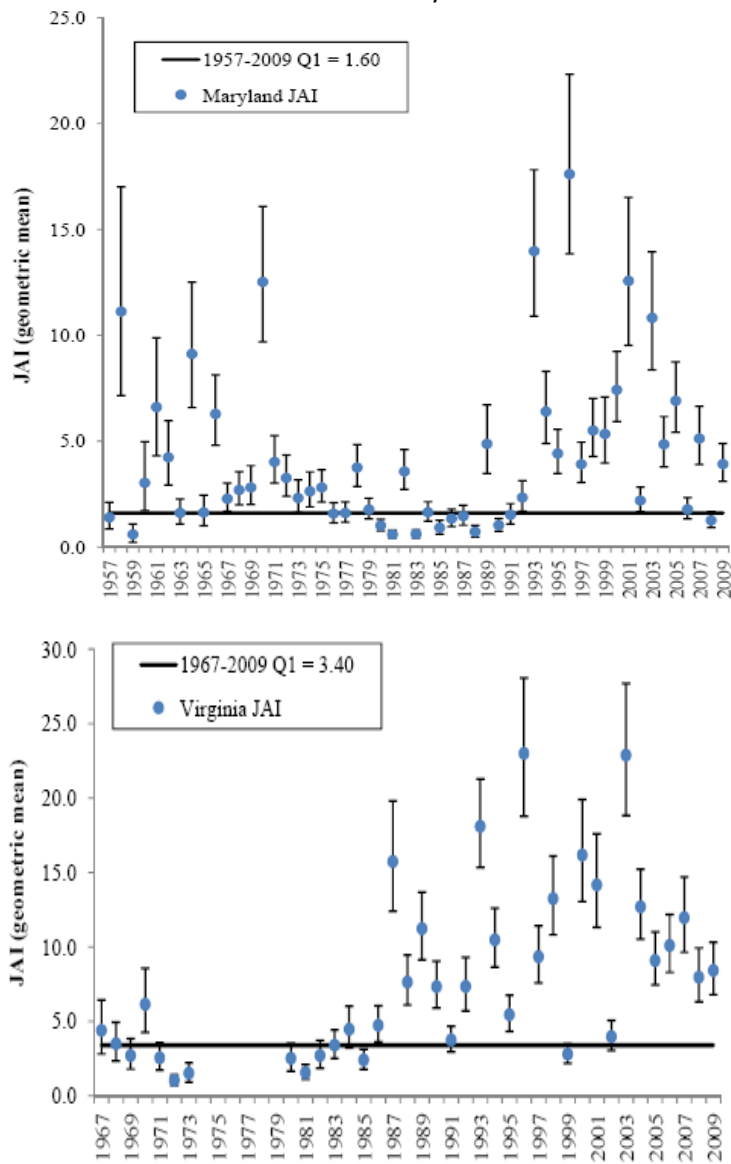
Striped Bass Abundance (Bay Health) http://www.chesapeakebay.net/indicators/indicator/striped_bass_abundance

- **Current:** Female Spawning Stock Biomass ASMFC data with ASMFC target and threshold; Striped Bass Management with overfishing threshold (both Coastwide)



- **Concerns:** no Bay-specific targets (only coast-wide)
- **Proposed Changes:**
 - Maintain female SSB abundance and fishing mortality charts and work with ASMFC to update the data when available (update using 2013 stock assessment results)
 - Add the Juvenile Abundance Index data for MD and VA?
 - Provide links to ASMFC information and explain that the SSB goal is coastwide

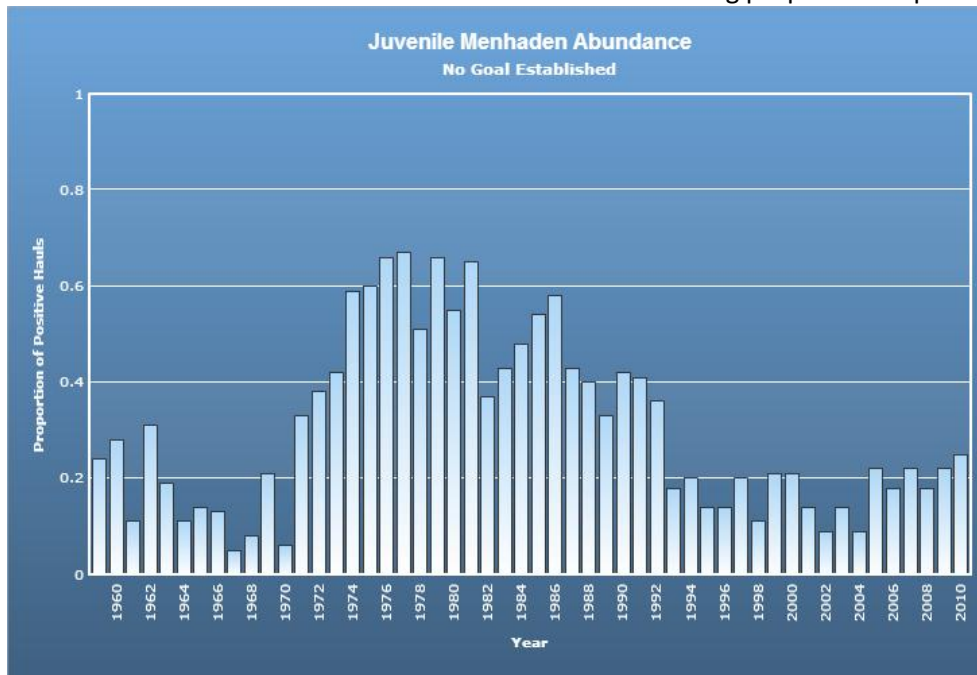
Striped Bass Juvenile Abundance Indices by State



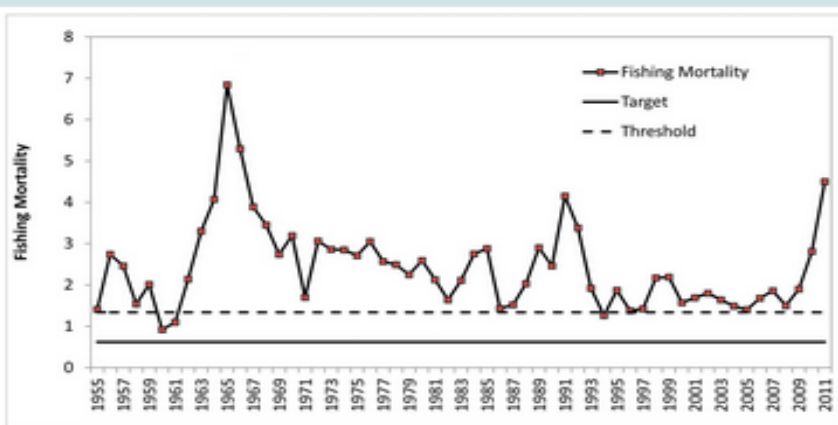
Juvenile Menhaden Abundance-Maryland (Bay Health)

http://www.chesapeakebay.net/indicators/indicator/juvenile_menhaden_abundance_maryland

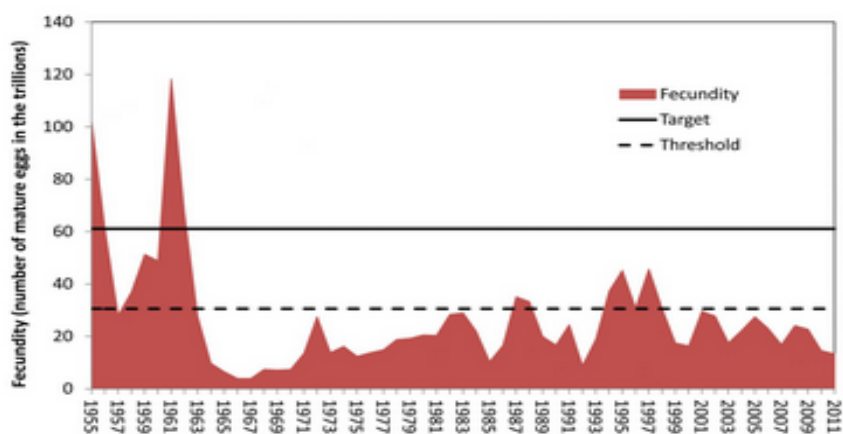
- **Current:** Juvenile menhaden abundance for MD using proportion of positive hauls



- **Concerns:** no Bay-specific targets (only coast-wide); no VA data
- **Proposed Changes:**
 - Include coastwide population data with current reference points (see fecundity and fishing mortality charts below)
 - Include Juvenile Abundance Index for MD and VA?
 - Provide links to ASMFC information and explain that no Bay-specific goals exist



Atlantic menhaden fishing mortality (full F). Source: ASMFC Atlantic Menhaden Stock Assessment Update, 2012



Atlantic menhaden fecundity. Source: ASMFC Atlantic Menhaden Stock Assessment Update, 2012