

Final Phase 6 Land Use Database Project Plan

July 11, 2016

**Peter Claggett, Fred Irani, Quentin Stubbs, Renee Thompson
US Geological Survey
Eastern Geographic Science Center**

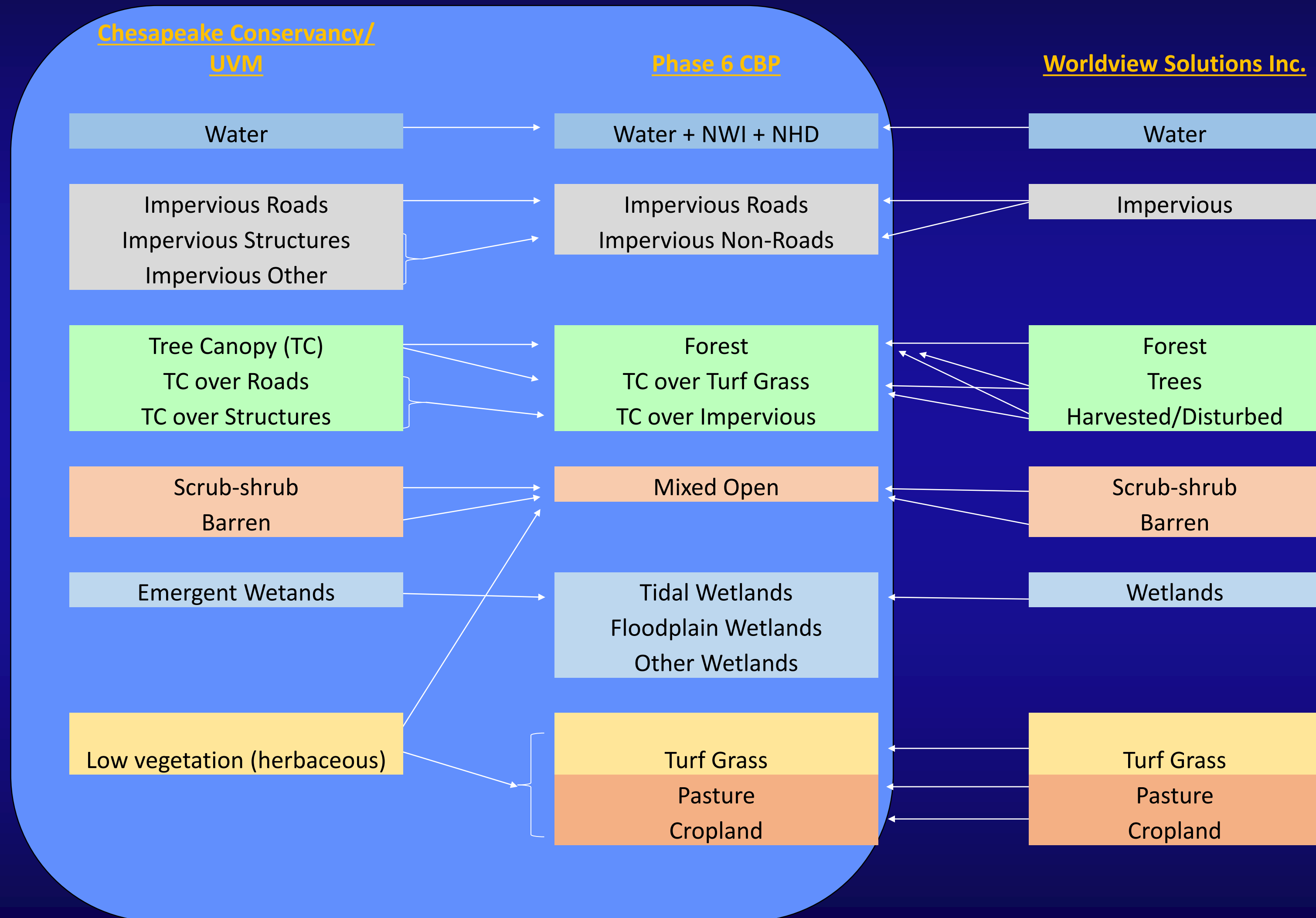
Overview

- **USGS Process Development Status**
- **Work Plan**
- **Schedule**

High Resolution LU Process

- Dec '15 – July '16 Automate Steps to:
 - Perform Cross Walk to Create 13 Classes at 1 Meter Resolution:
 - Impervious Road,
 - Impervious Non-Road
 - Tree Canopy over Impervious
 - Tree Canopy over Turf Grass
 - Turf Grass
 - Forest
 - Mixed Open
 - Pasture,
 - Crop
 - Tidal, Floodplain, and Other Wetlands (3 Layers)
 - Water

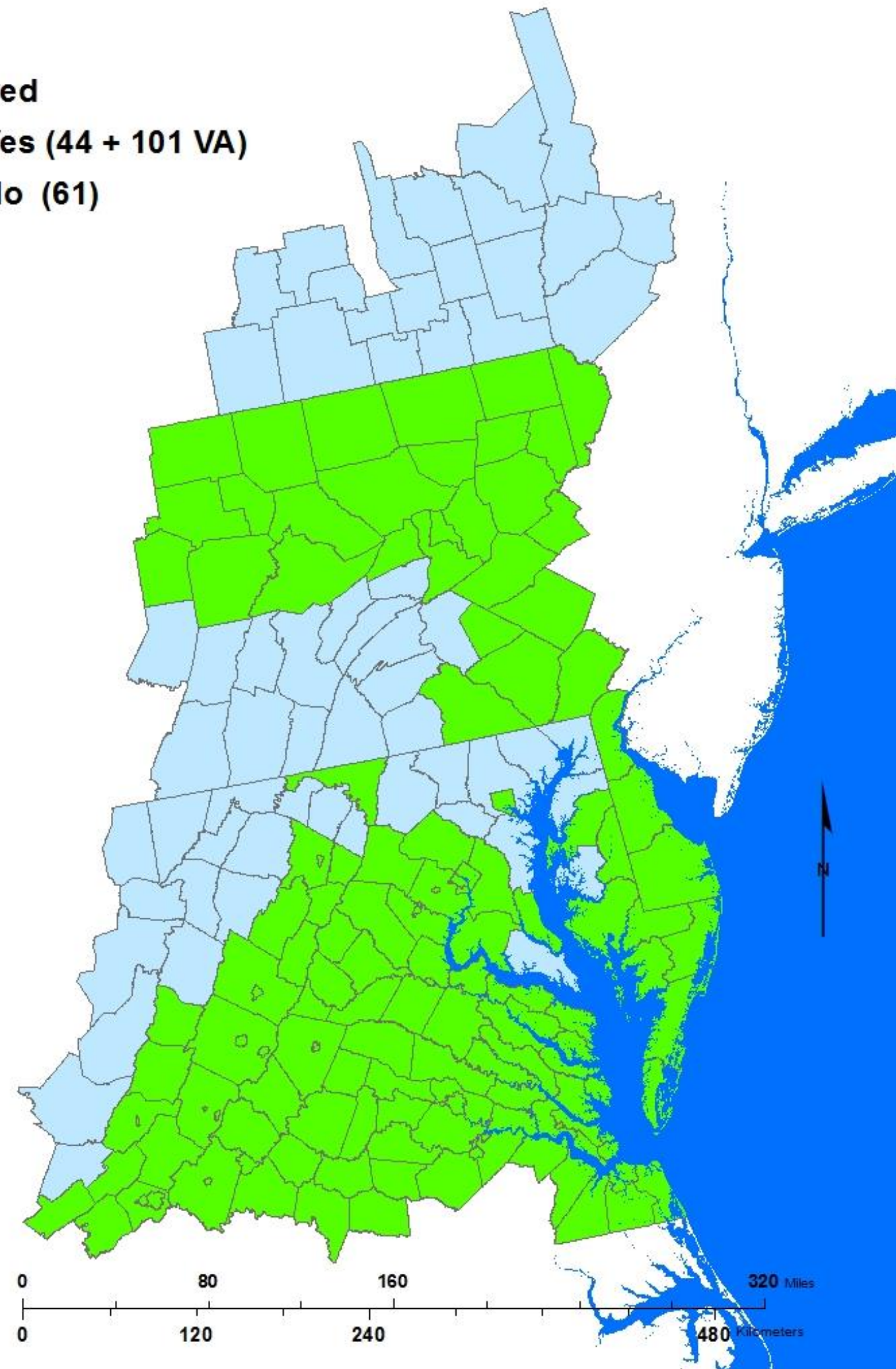
Data Cross walk



Delivered

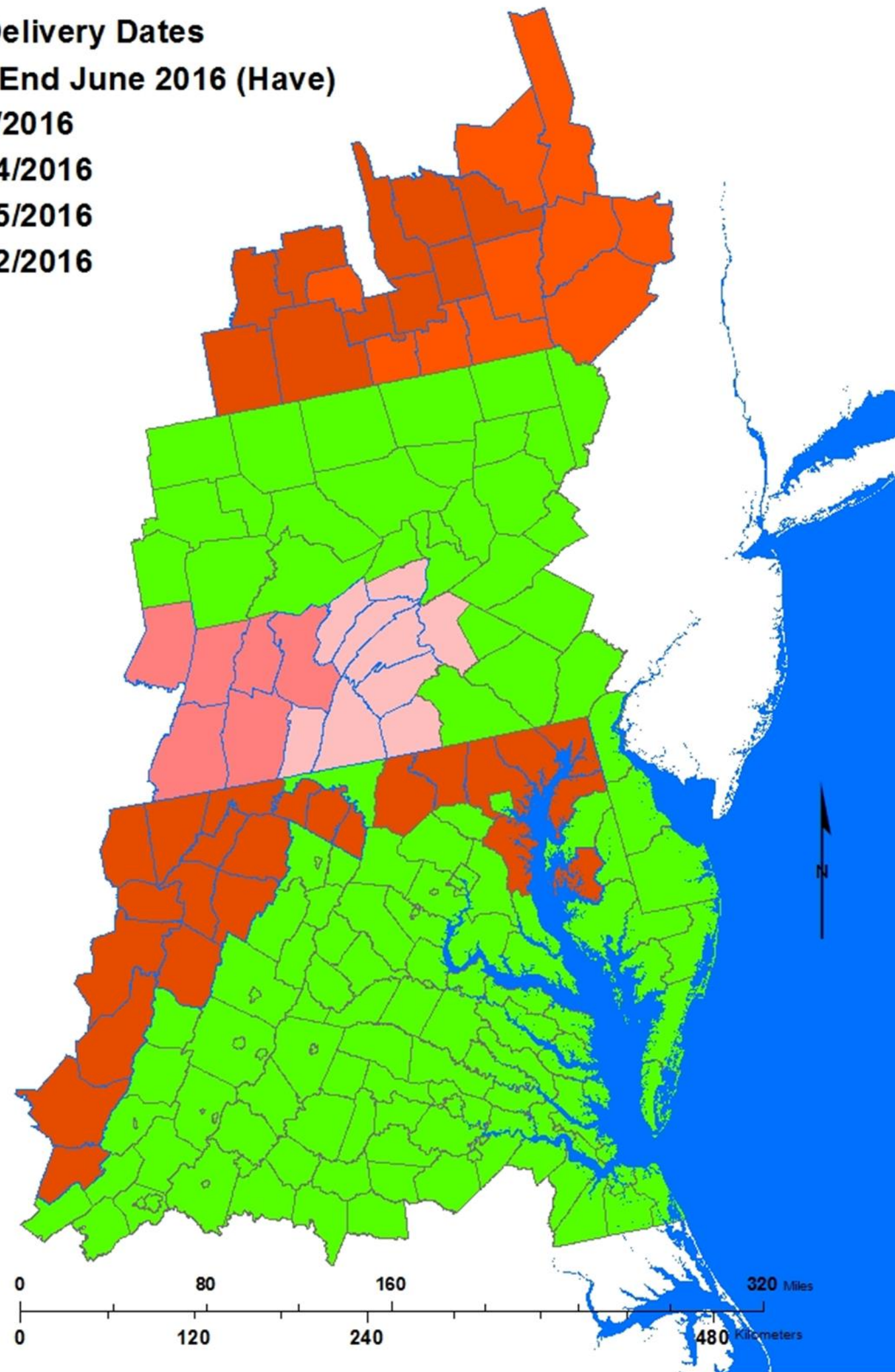
 **Yes (44 + 101 VA)**

 **No (61)**



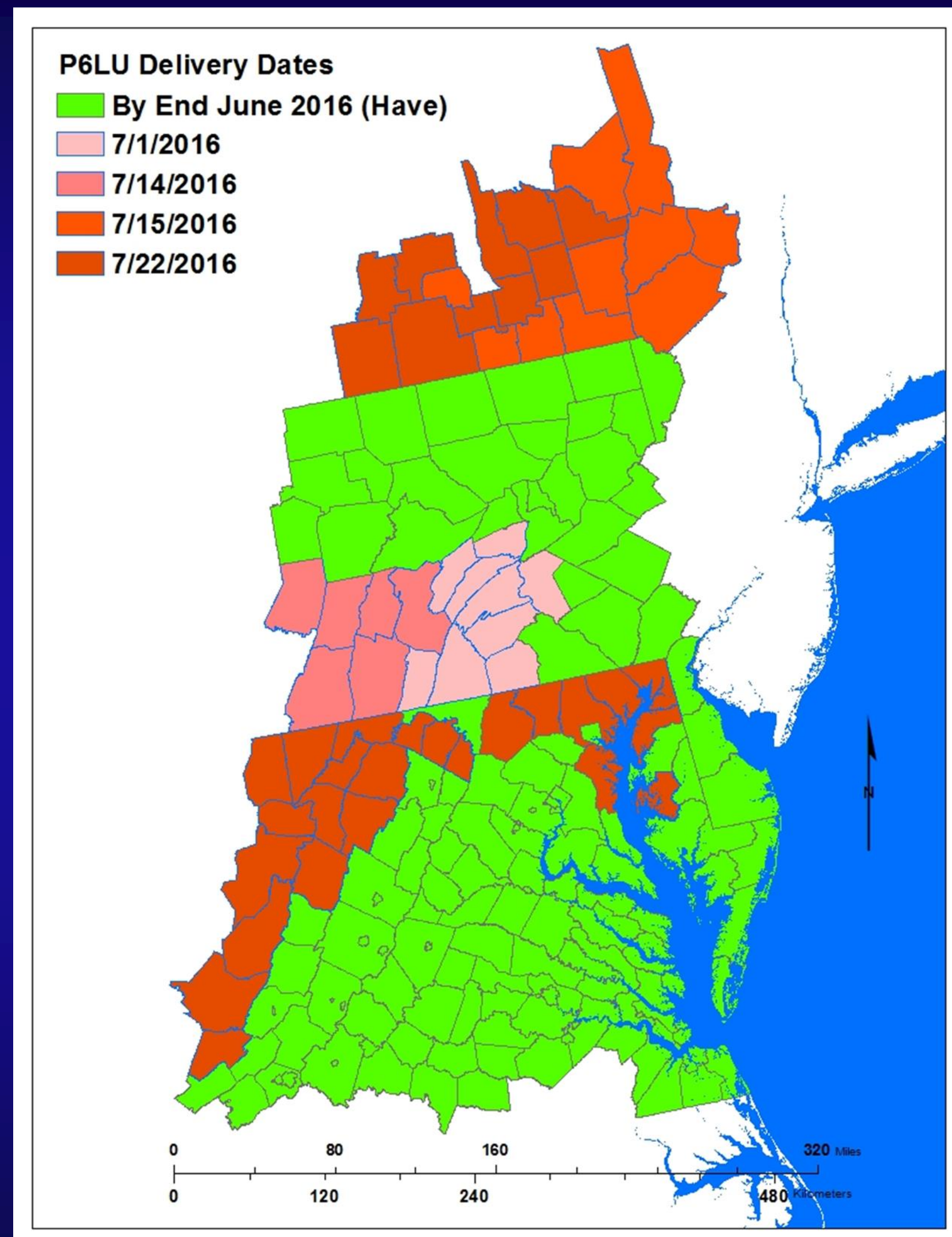
P6LU Delivery Dates

- By End June 2016 (Have)
- 7/1/2016
- 7/14/2016
- 7/15/2016
- 7/22/2016



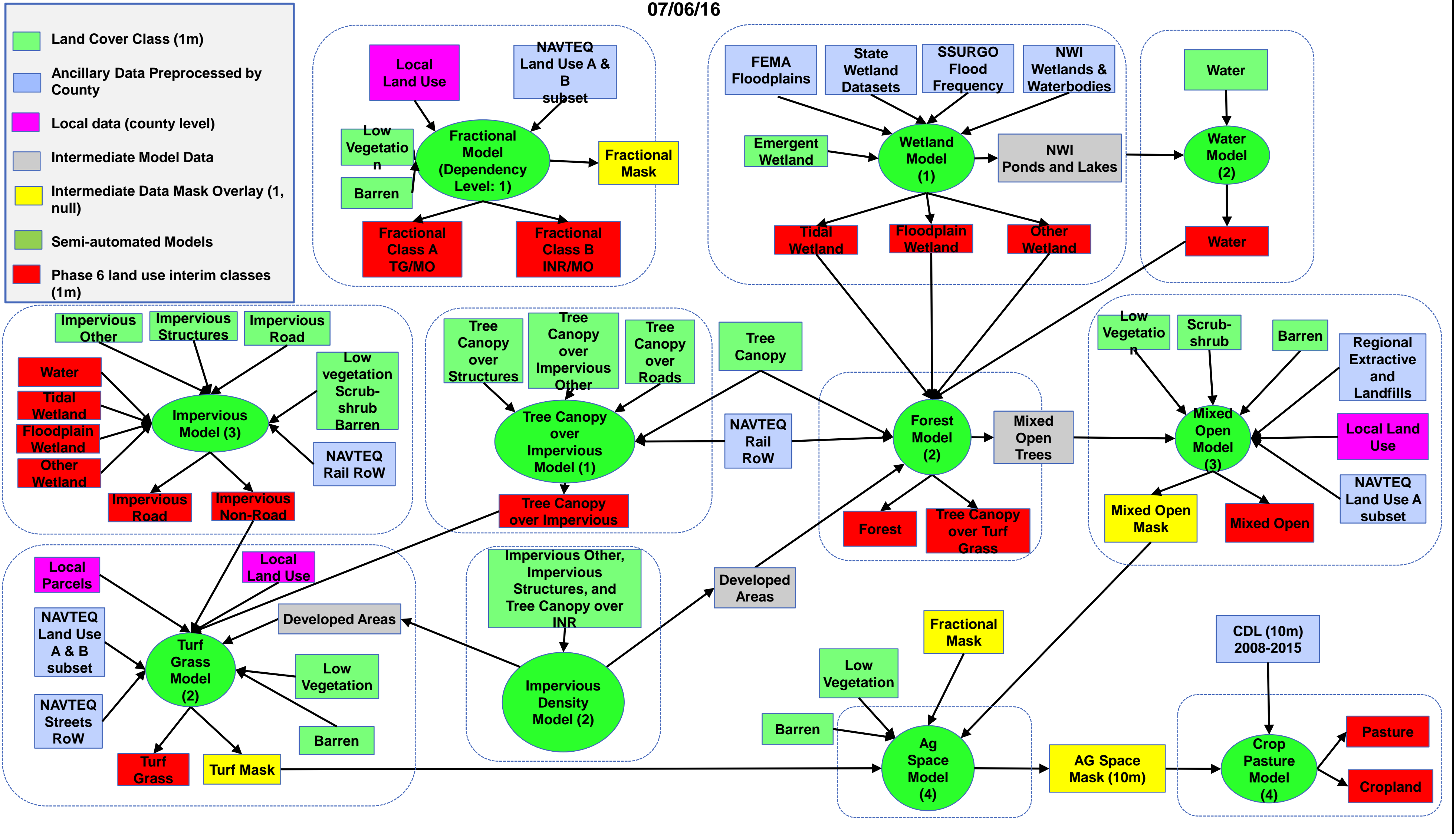
For Each of 206 Counties Masks
Rasterized from Derived Regional Vector
Data:

- Rail RoW
- Extractive / Land Fill
- Federal Lands
- NavTec Turf
- NavTec Fractional
- NavTec Beach (Mixed Open)
- Open Water (NWI)
- Street Right of Ways
- Crop and Pasture Masks



Phase 6 Land Use Development Process

07/06/16



Production Resources

- **Resources**

- **2 FT + 8 PT Analysts = ~ 6 FT Analyst Hours per Week**

- **Or ~ 12 Analyst Hours per County**

- **2 Analysts from Chesapeake Conservancy with cloud processing.**

Production Schedule

- **206 Counties / 10 Weeks (July – Sept) = 20 COs per Week**
 - **Rolling Delivery – Review – Final Delivery Schedule**

- **COs to be Processed by State in the Following Order:**
 - 1. Delaware**
 - 2. DC**
 - 3. Maryland**
 - 4. Pennsylvania**
 - 5. West Virginia**
 - 6. New York**
 - 7. Virginia**

P6 Land Use Production Schedule

- **July 18th: County-by-county production will start on July 18th .**
- **July 25th: Local review will start.**
- **August 31st: Backcast methodology tested- to be reviewed by LUWG in September and later by STAC. Annual land cover change data delivered by USGS to CBP. PA Wetlands mapping complete. VA Tree Canopy mapping complete.**
- **September 30th: Complete initial production of Phase 6 land use datasets for all counties in the watershed and disseminate for local review.**
- **October 7th or 14th: Incorporate P6 land use datasets (pre-local review) into the October 2016 calibration.**
- **October 31st: All local reviews of the P6 land use datasets are complete.**
- **November 4th: All responses to reviewer comments are complete. Maryland land use data incorporated into tabular Phase 6 land use.**
- **November 18th: Annual backcast of 2013/14 land use data to 1985 complete.**
- **November 25th: Land use data subdivided into Regulated (MS4 and CSO), Federal, and Non-federal categories.**
- **December 2nd: Phase 6 land use, 1985 – 2013/14, delivered to the CBP modeling team.**
- **December 9th: Adjustments to Phase 6 land uses and to the Census of Agriculture are made at the LRSEG level to incorporate the Census of Agriculture.**

Contact Information:

Peter Claggett, USGS- EGSC
pclagget@chesapeakebay.net

Or

Fred Irani, USGS- EGSC
firani@chesapeakebay.net

Chesapeake Bay Program Office
410 Severn Ave, Suite 109
Annapolis, MD 21403