

Planning Target Methodology

WQGIT Face-to-Face

October 24, 2016

Hershey, PA

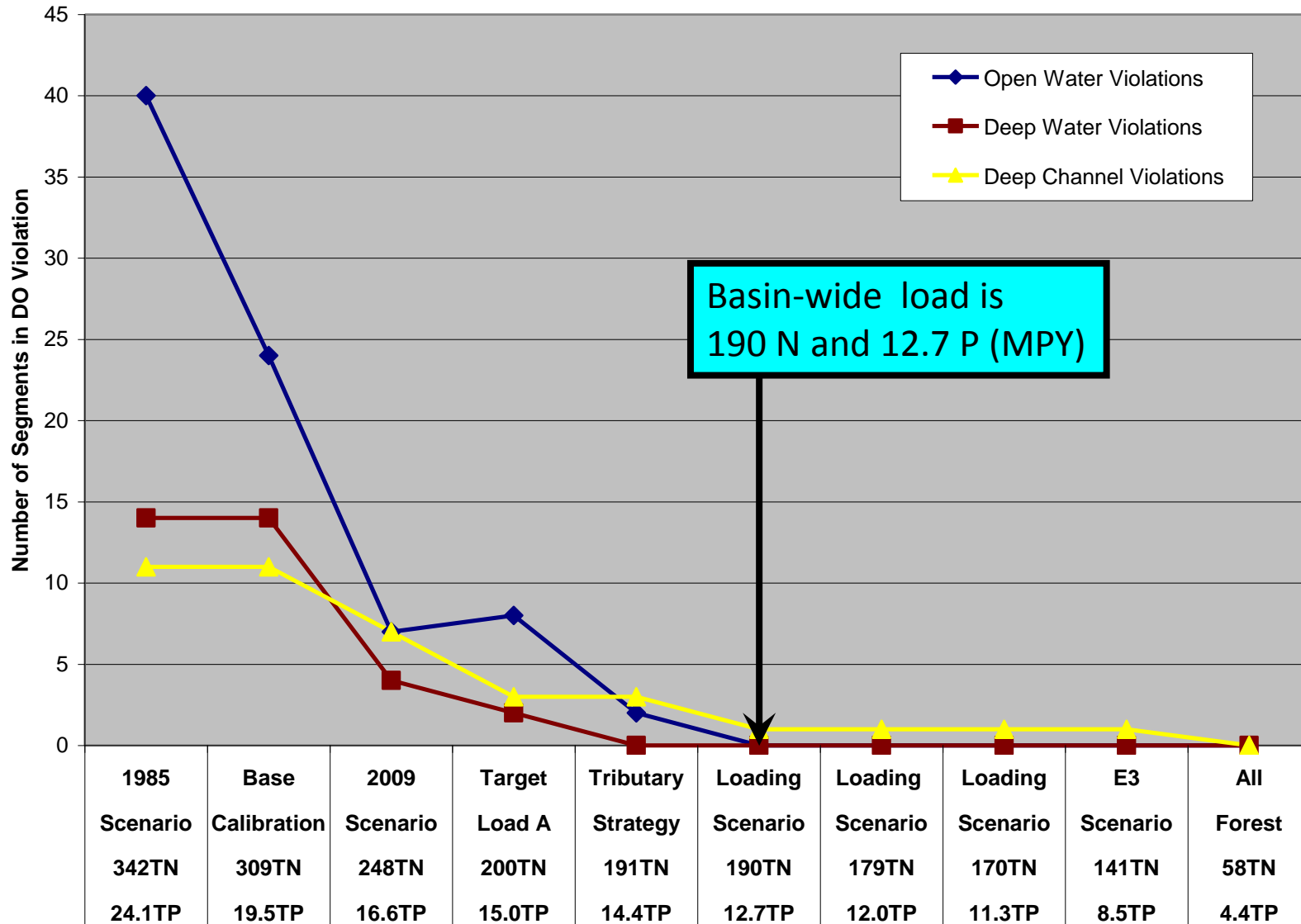
Day 2 Decisions Desired

Agreement on WQGIT's recommendations to the Management Board regarding the proposed Phase III WIP planning targets methodology

Agreement on base year for setting the planning targets

Approval of the updated E3 and no action scenario levels of implementation definitions

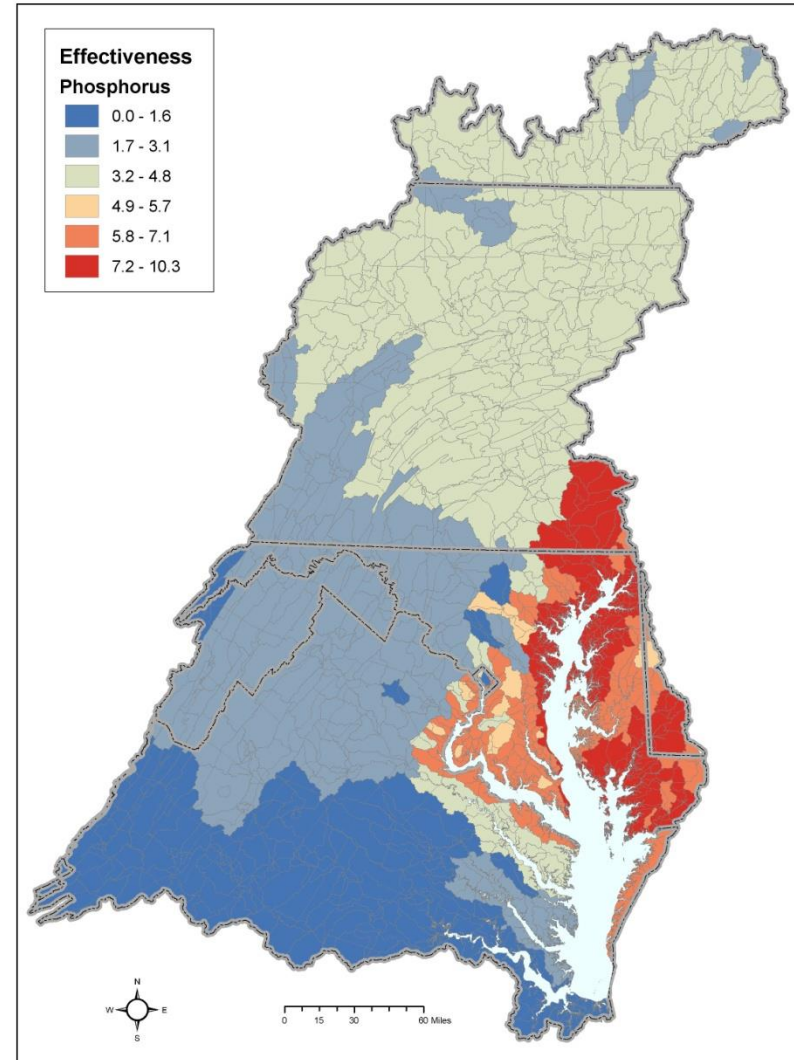
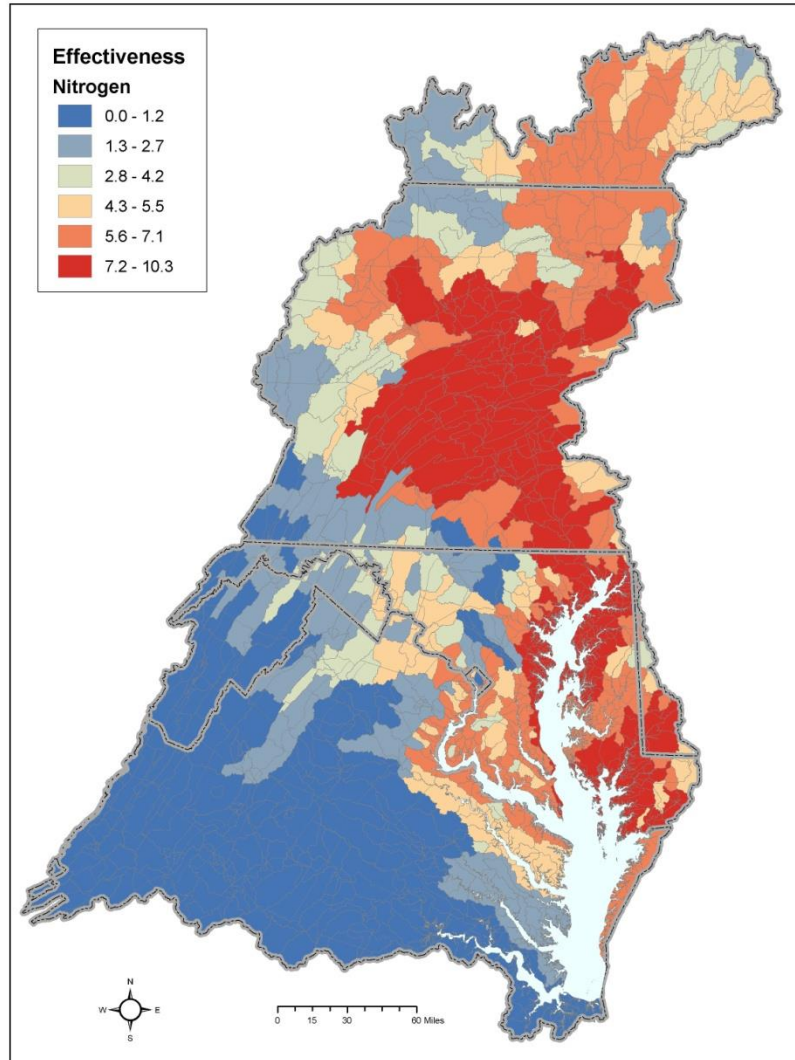
Dissolved Oxygen Criteria Attainment



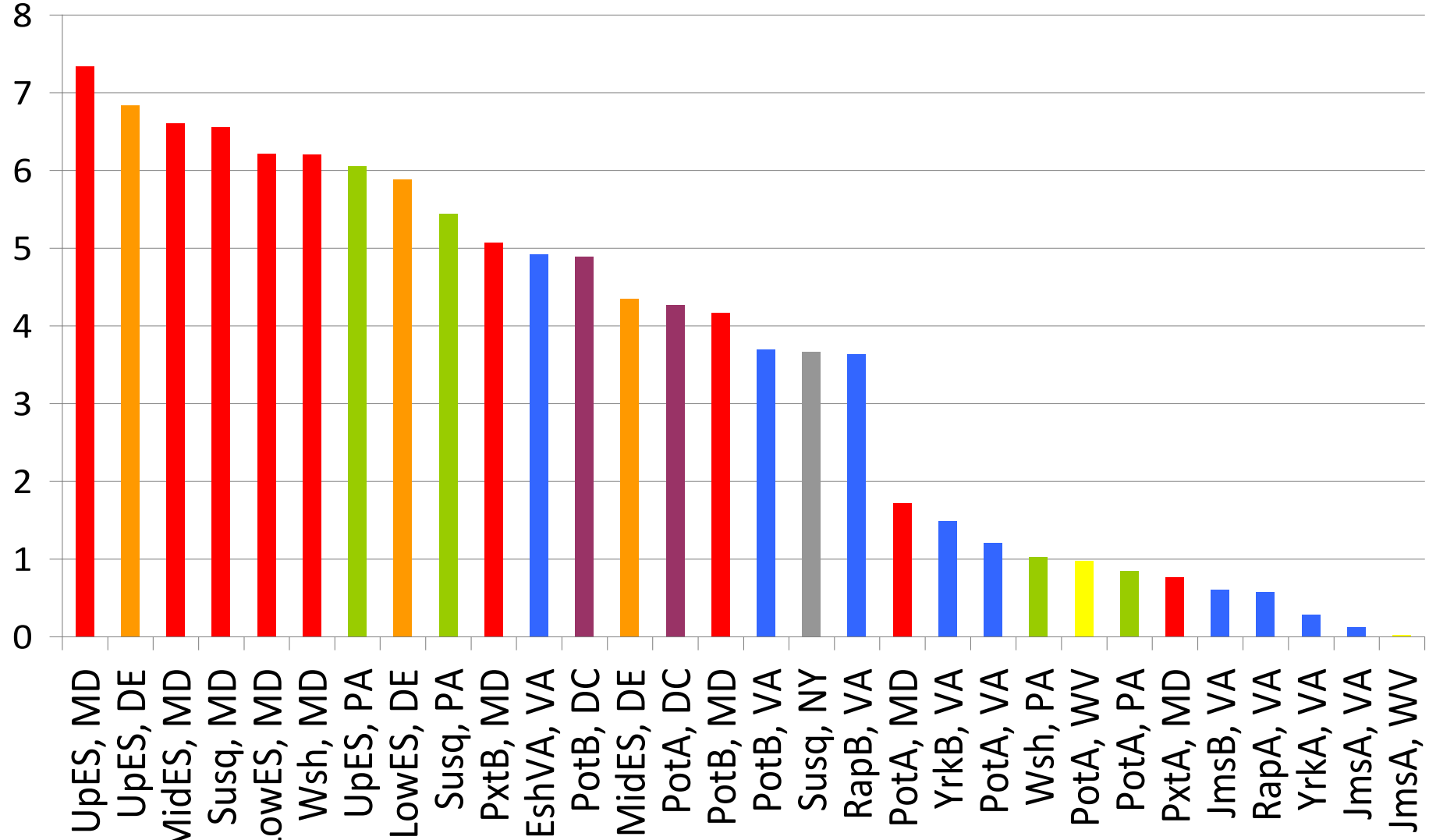
Components of the Previous Method

- Plot effectiveness vs percent effort
- Set upper half of WWTP lines at 4.5 N, 0.22 P mg/l equivalents; intercept at 8 N, 0.54 P mg/l equivalents
- Most effective basin is 20 percentage points higher than least effective for 'all other' line
- Special cases

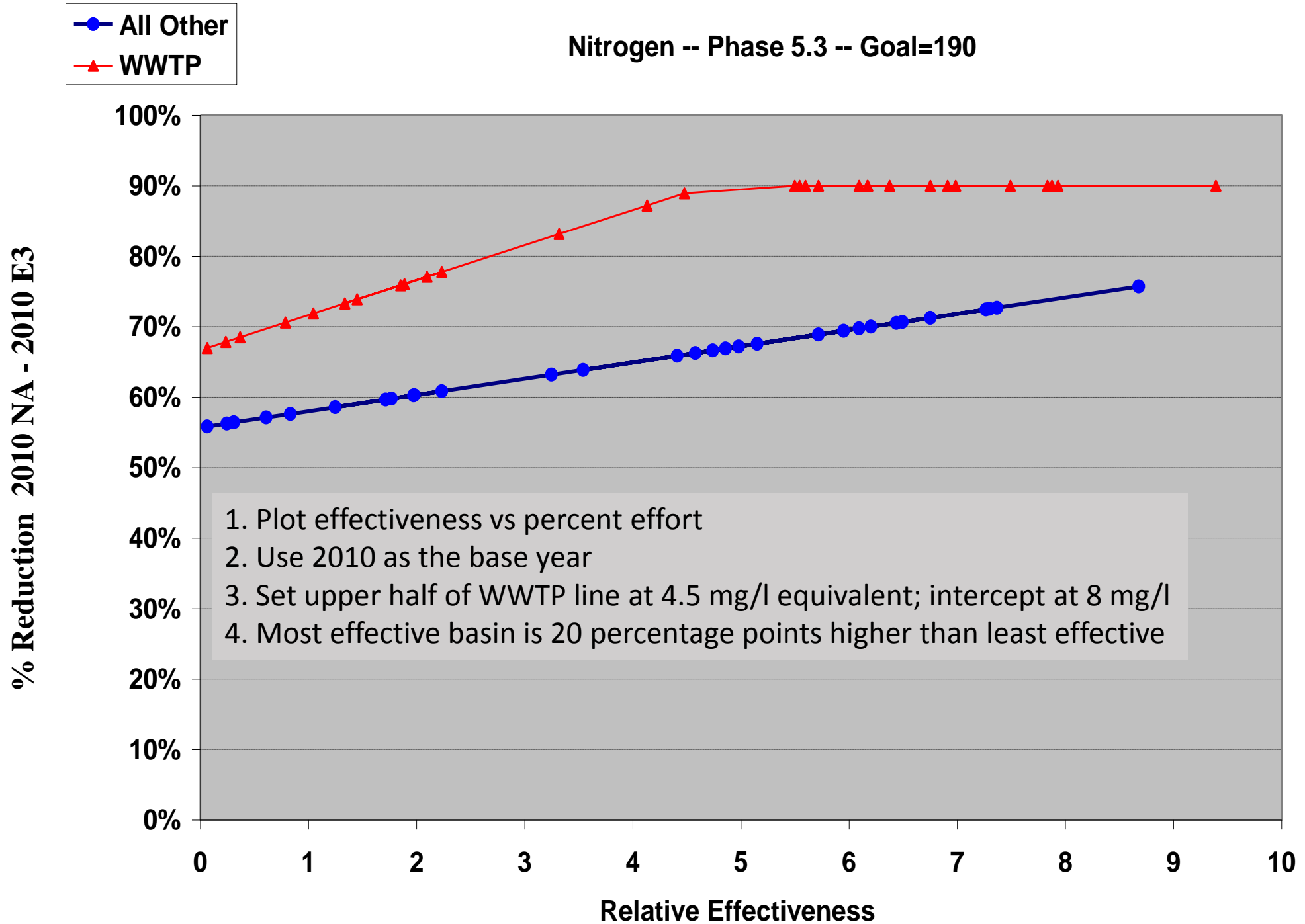
Relative Effect of a Pound of Pollution on Bay Water Quality



Major River Basin by Jurisdiction Relative Impact on Bay Water Quality

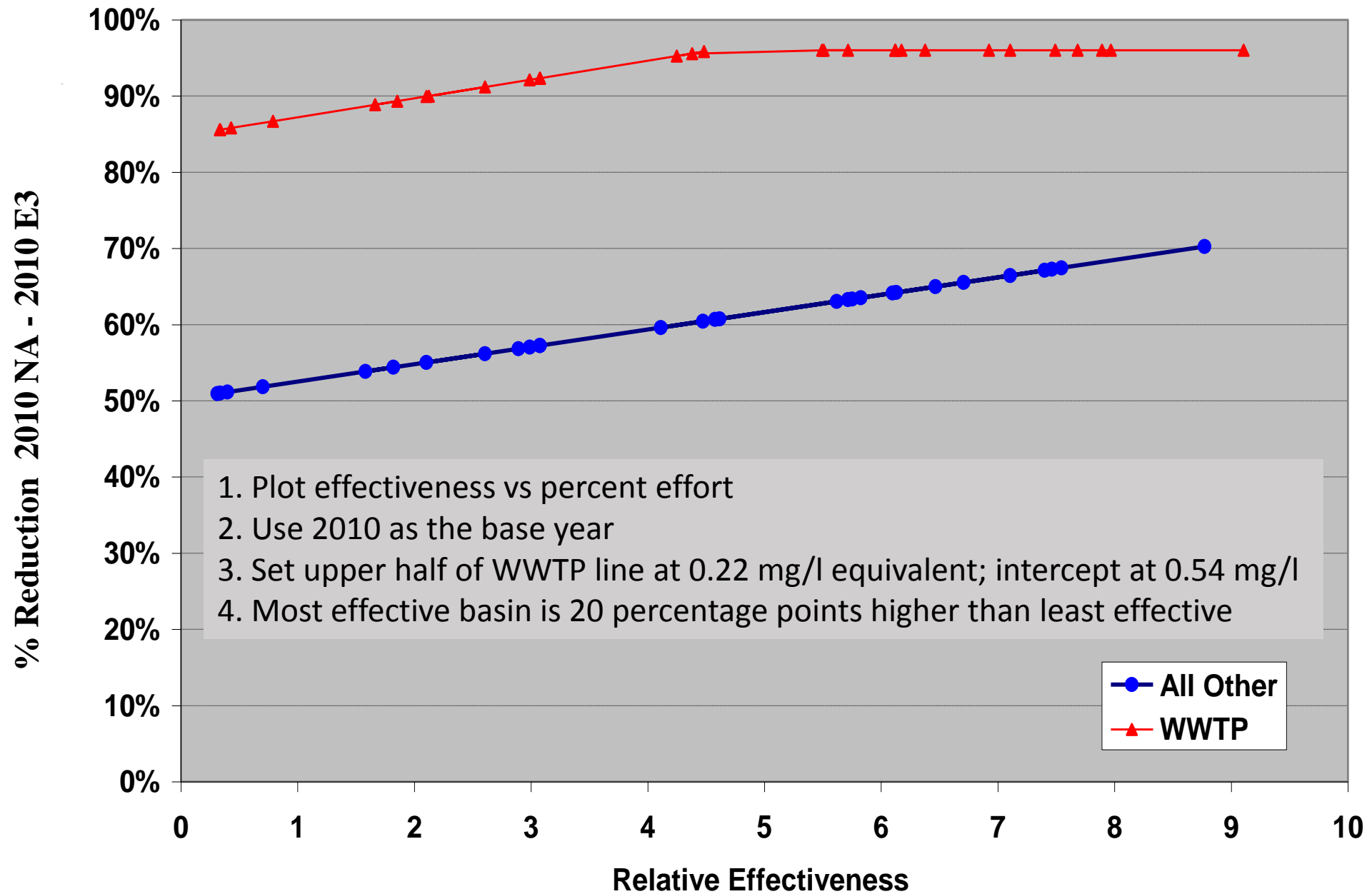


Nitrogen -- Phase 5.3 -- Goal=190

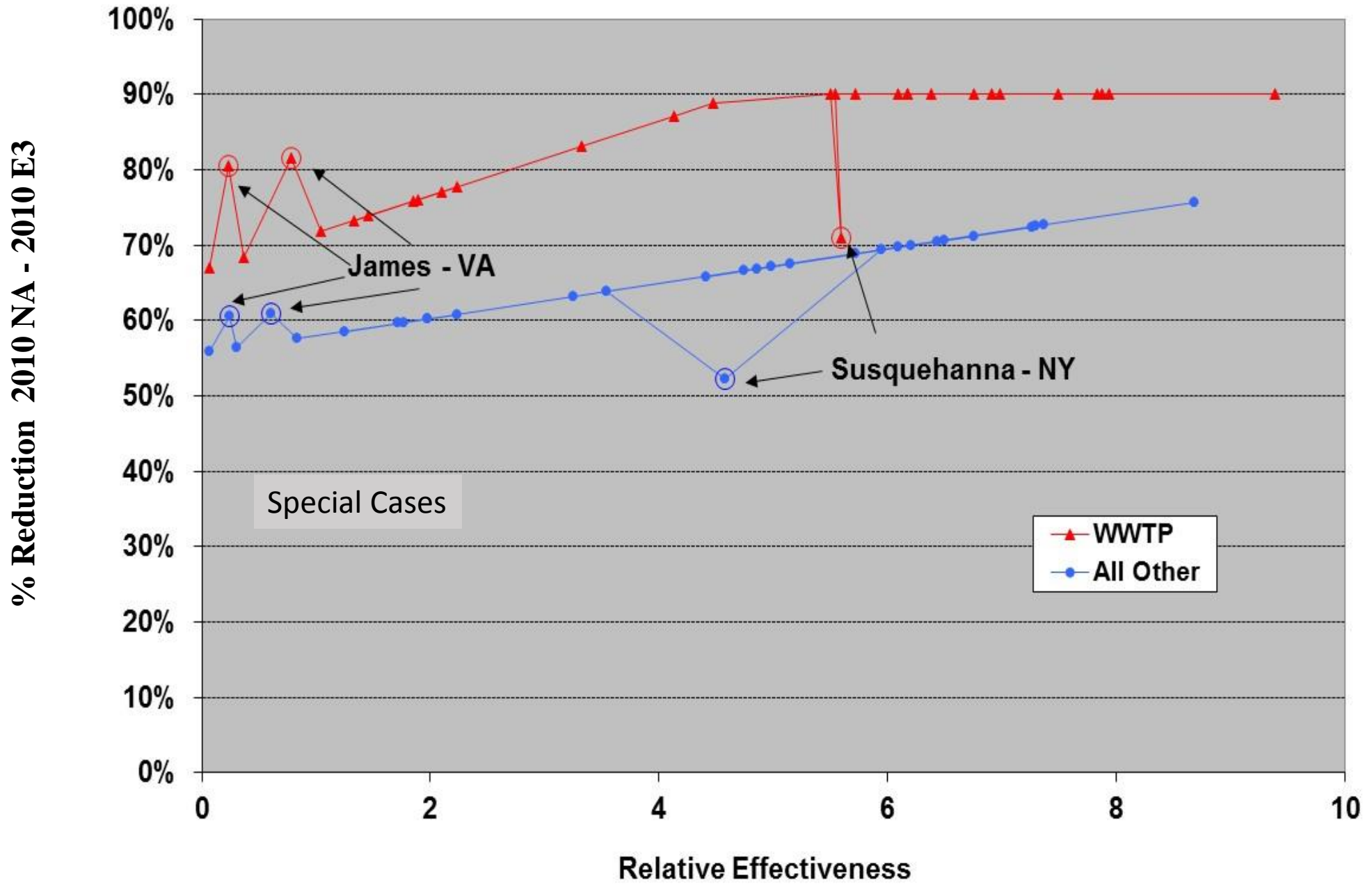


- 1. Plot effectiveness vs percent effort
- 2. Use 2010 as the base year
- 3. Set upper half of WWTP line at 4.5 mg/l equivalent; intercept at 8 mg/l
- 4. Most effective basin is 20 percentage points higher than least effective

TP, p5.3, goal=12.67 WWTP = .22 - .54 mg/l, other: max=min+20%,



Nitrogen -- Phase 5.3 -- Goal=190



TP, p5.3, goal=13 WWTP = .22 - .54 mg/l, other: max=min+20%,

