

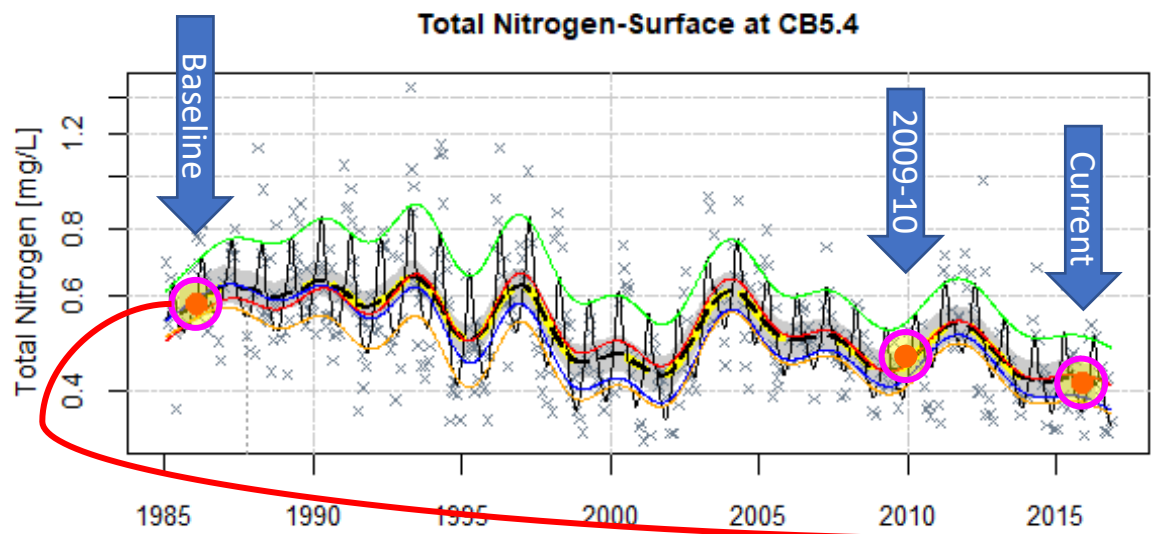
# baytrendsmap

v1.1.0

- post process baytrends output
- hosted at

<https://baytrends.chesapeakebay.net/baytrendsmaps>

October 7, 2020

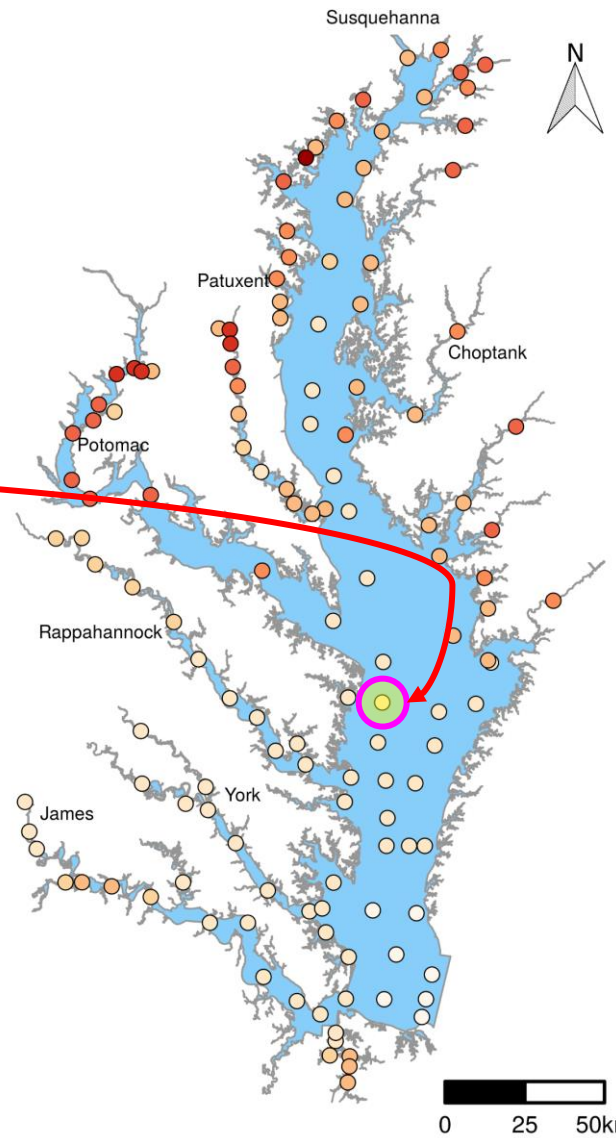


× Uncen.	— Fit.GAM	■ Sign.	● B/C x	— 4/1	— 10/1
○ Cens.	— Avg.GAM	■ Conf.Int.	— 1/1	— 7/1	

**Change**

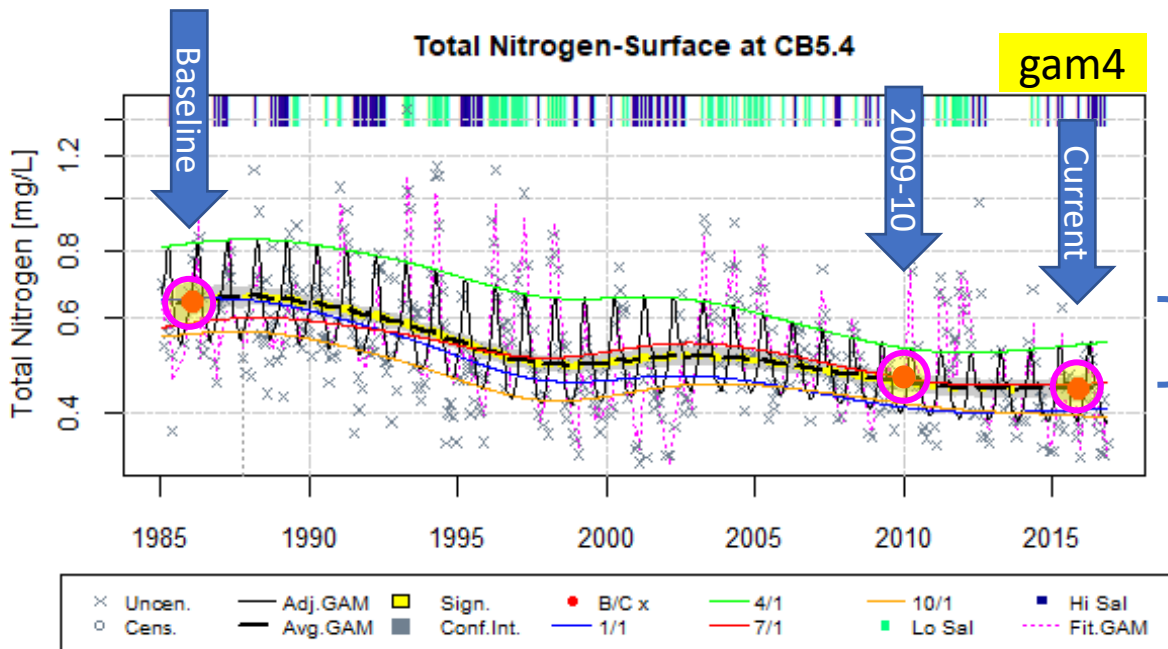
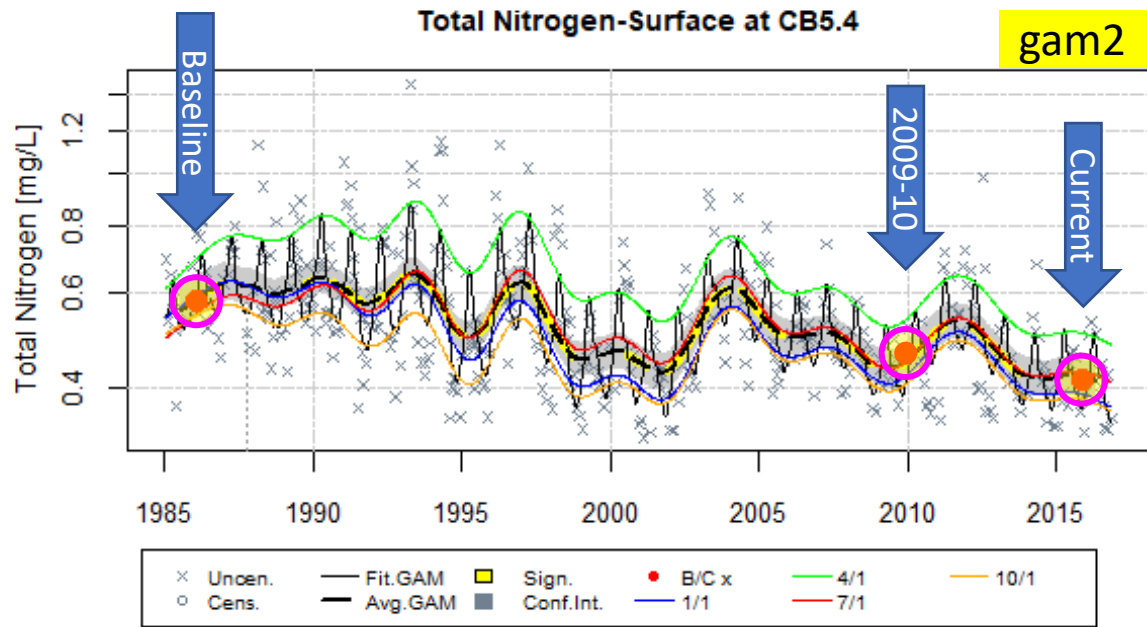
- Obs.
- %
- p-val.

Total Nitrogen [mg/L]  
Surface | Annual



**Baseline mean**

○ [0.2,0.4]	○ (0.8,1]	○ (1.5,2]	○ (3,5]
○ (0.4,0.8]	○ (1,1.5]	○ (2,3]	○ (5,8]



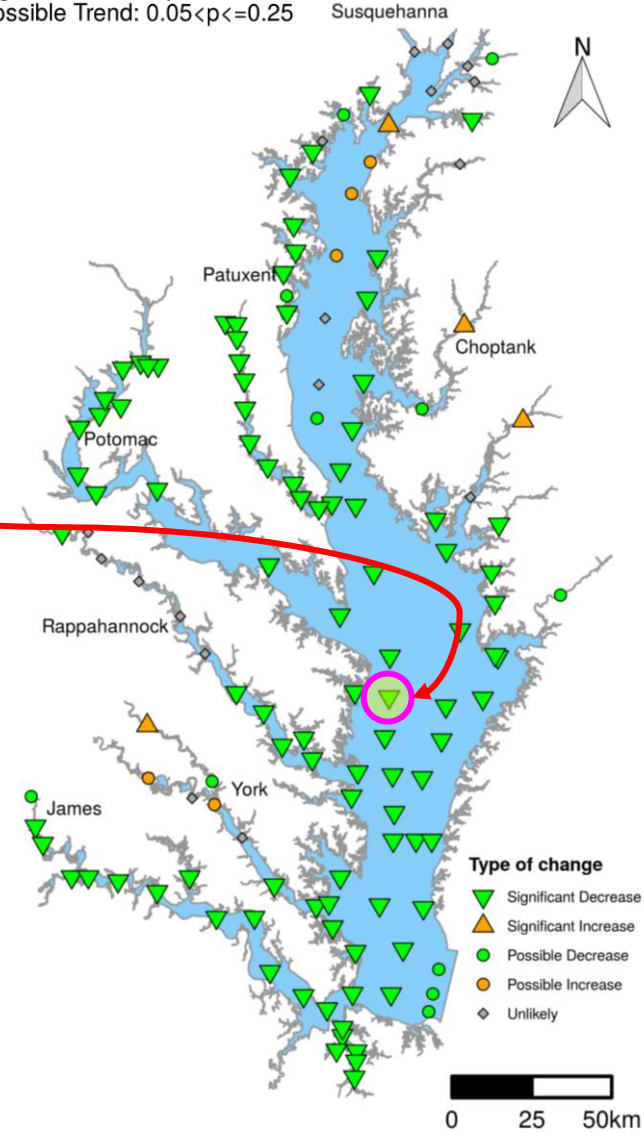
Total Nitrogen [mg/L]  
 Non-linear Trend (Full Period)  
 Annual | Surface  
 Significant Trend:  $p < 0.05$   
 Possible Trend:  $0.05 < p < 0.25$

Change

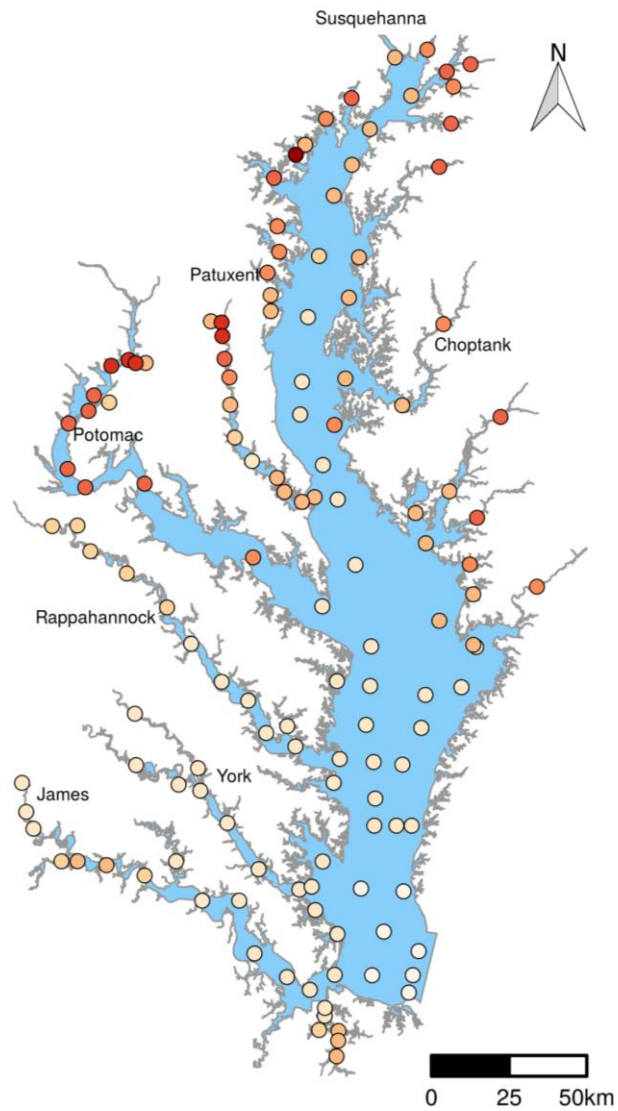
- Obs.
- %
- p-val.

Change

- Obs.
- %
- p-val.

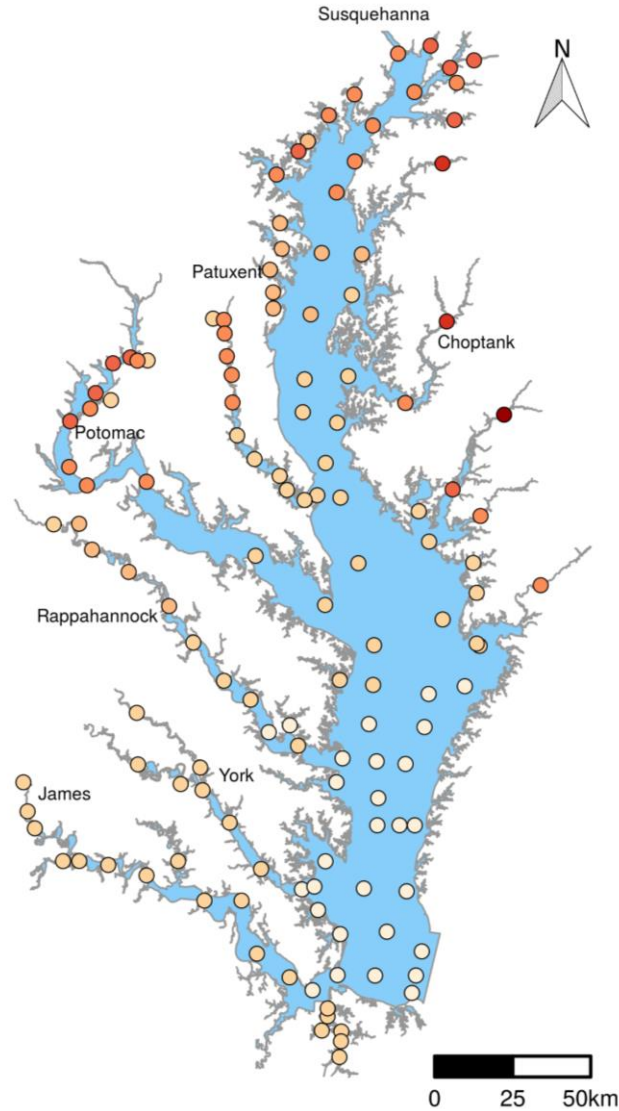


p-value thresholds (possible, significant) = 0.25, 0.05



**Baseline mean**

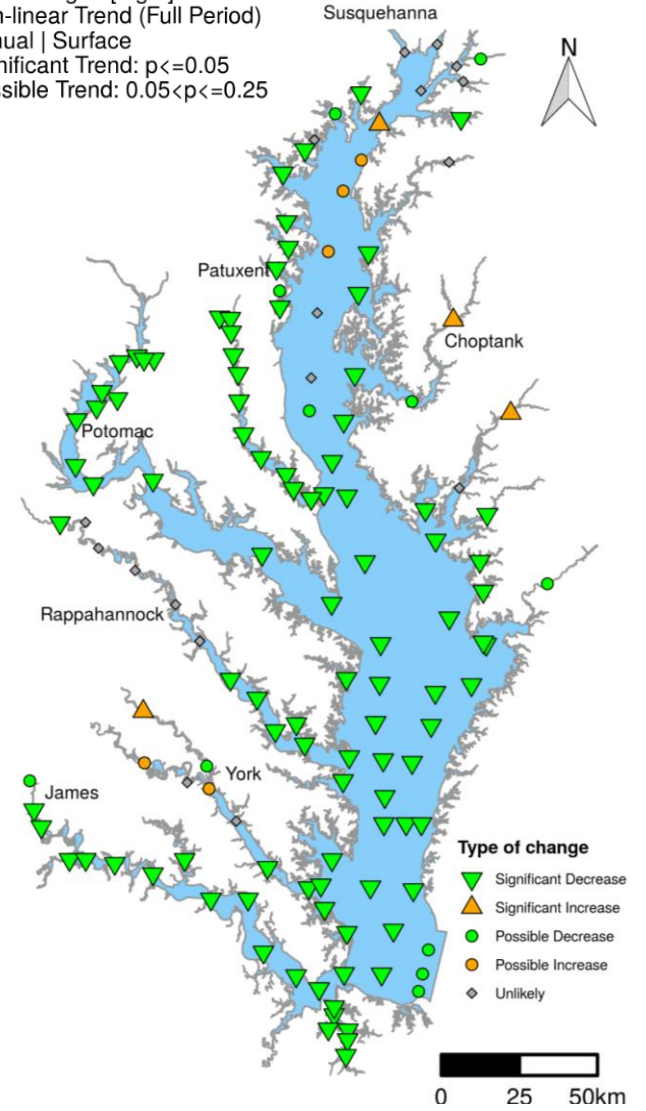
○ [0.2,0.4]	○ (0.8,1]	○ (1.5,2]	○ (3,5]
○ (0.4,0.8]	○ (1,1.5]	○ (2,3]	○ (5,8]



**Current mean**

○ [0.2,0.4]	○ (0.8,1]	○ (1.5,2]	○ (3,5]
○ (0.4,0.8]	○ (1,1.5]	○ (2,3]	○ (5,8]

Total Nitrogen [mg/L]  
Non-linear Trend (Full Period)  
Annual | Surface  
Significant Trend:  $p < 0.05$   
Possible Trend:  $0.05 < p < 0.25$



**Type of change**

- ▼ Significant Decrease
- ▲ Significant Increase
- Possible Decrease
- Possible Increase
- ◇ Unlikely

p-value thresholds (possible, significant) = 0.25, 0.05

baytrendsmat R package v1.0.0.9026

## Choose baytrends Output

### 1a. Load final file

Choose file to load

- Non-linear Trend (Full Period)
- Non-linear Trend (2009-2010 to 2017-2018)
- Non-linear Trend with Flow Adjustment (Full Period)
- Non-linear Trend with Flow Adjustment (2009-2010 to 2017-2018)

Load 'Official' File

Maximum file size is 100 MB.

### 1b. Load user file

Select CSV input file

Choose file to upload

Browse...

No file selected

## Number of stations

Final File	Parameter	Layer	Surface (Bottom)				
		Season	All Annual	Spring1 Mar-May	Summer1 Jun-Sep	Summer2 Jul-Sep	SAV1 Apr-Oct
Non-linear Trend (Full Period)	Chlorophyll a (Corrected) [ug/L]		135	135		135	
	Secchi Depth [m]		131	131	131		67
	Total Nitrogen [mg/L]		135 (127)				
	Total Phosphorus [mg/L]		135 (127)				
	Dissolved Oxygen [mg/L]				143 (135)		
	Water Temperature [deg C]		136 (127)	136 (127)	136 (127)		71 (63)
Non-linear Trend (2009-2010 to 2017-2018)	Chlorophyll a (Corrected) [ug/L]		136	136		136	
	Secchi Depth [m]		131	131	131		67
	Total Nitrogen [mg/L]		136 (127)				
	Total Phosphorus [mg/L]		136 (127)				
	Dissolved Oxygen [mg/L]				144 (135)		
	Water Temperature [deg C]		136 (127)	136 (127)	136 (127)		71 (63)
Non-linear Trend with Flow Adjustment (Full Period)	Chlorophyll a (Corrected) [ug/L]		135	135		135	
	Secchi Depth [m]		131	131	131		67
	Total Nitrogen [mg/L]		135 (127)				
	Total Phosphorus [mg/L]		135 (127)				
	Dissolved Oxygen [mg/L]				143 (135)		
	Water Temperature [deg C]		136 (127)	136 (127)	136 (127)		71 (63)
Non-linear Trend with Flow Adjustment (2009-2010 to 2017-2018)	Chlorophyll a (Corrected) [ug/L]		136	136		136	
	Secchi Depth [m]		131	131	131		67
	Total Nitrogen [mg/L]		136 (127)				
	Total Phosphorus [mg/L]		136 (127)				
	Dissolved Oxygen [mg/L]				144 (135)		
	Water Temperature [deg C]		136 (127)	136 (127)	136 (127)		71 (63)

# baytrendsmap

v1.1.0 (source code)

<https://github.com/tetrattech/baytrendsmap>

- Erik Leppo  
[erik.leppo@tetrattech.com](mailto:erik.leppo@tetrattech.com)
- Jon Harcum  
[jon.harcum@tetrattech.com](mailto:jon.harcum@tetrattech.com)

October 7, 2020