



Narrative Analysis

STREAM HEALTH **JULY 28, 2021**

The narrative analysis summarizes the findings of the logic and action plan and serves as the bridge between the logic and action plan and the quarterly progress meeting presentation. Based on what you learned over the past two years from your successes and challenges, you will describe whether the partnership should make adaptations or change course.

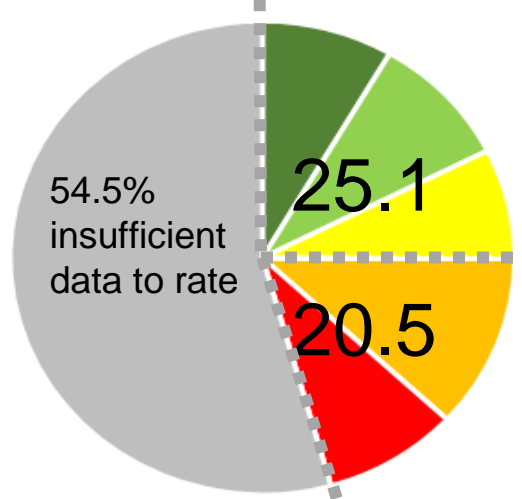
Use your completed pre-quarterly logic and action plan to answer the questions below. After the quarterly progress meeting, your responses to these questions will guide your updates to your logic and action plan. Additional guidance can be found on [ChesapeakeDecisions](#).

1. Examine your red/yellow/green analysis of your management actions. What lessons have you learned over the past two years of implementation?

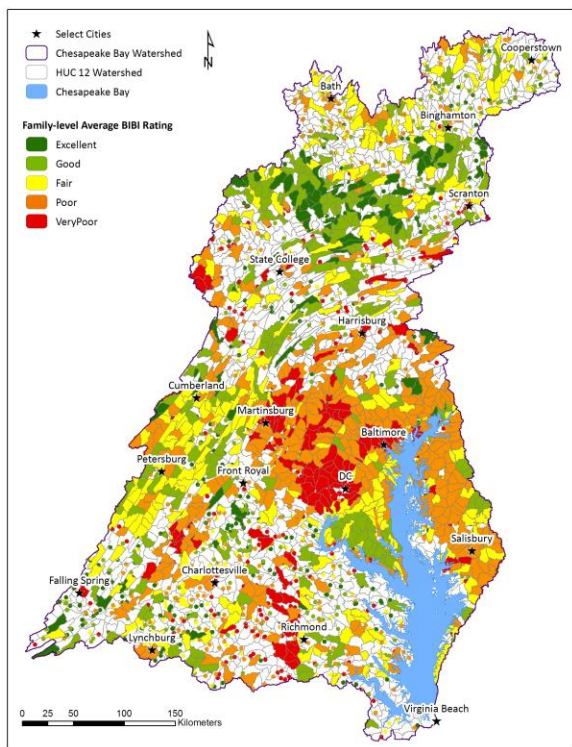
Phase 1 of the 3-phase work plan to identify the extent to which management actions improve stream health and the multiple stressors that affect it is being finalized. This phase has identified which in-stream stressors are most affecting stream health, defined as the health/integrity of the benthic macroinvertebrate community. Phase 2, identifying which of these stressors can be alleviated through management actions, is underway.

2. Regardless of how successful your short-term progress has been over the past two years, indicate whether we are making progress at a rate that is necessary to achieve the outcome you are working toward. The example graph below illustrates this concept.

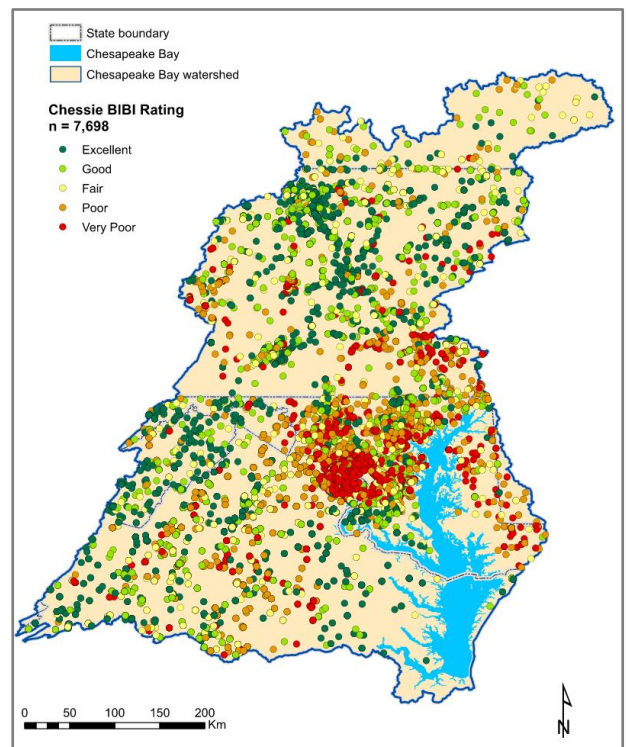
2006-2011 (Baseline)



Percent HUC-12 catchments in the Chesapeake Bay watershed with Chessie BIBI ratings of Very Poor, Poor, Fair, Good, and Excellent.



HUC-12 catchments by average BIBI rating 2006-2011



Chessie BIBI sampling points 2012-2019 (in progress)

ICPRB completed processing updated samples for 2012-2017. The colored dots (7,698) are actual data points. USGS uses these data to assign a rating to HUC-12 catchments using the Random Forest Model. This weighted rating can only be done if there are a minimum of 2 sampling points within each HUC-12. 54.4% of the CBW had insufficient data to do this analysis for the baseline. The same is expected for the update.

3. What scientific, fiscal and policy-related developments will influence your work over the next two years?

There are several developments underway that could influence our work including:

Scientific

- *Partners' studies exploring the effects of climate change on freshwater streams.*

Fiscal

- *Determine future role/responsibility/funding for future BIBI updates.*

Policy

- *Development of a stream temperature TMDL (Maryland).*
- *Continued work to develop additional metrics to measure progress in improving stream health.*

With the exception of impacts to our fiscal resources, these developments should help to fill in gaps in knowledge of stressors affecting stream health. Filling in these gaps will help to inform our development of additional stream health metrics.

4. Based on your response to the questions above, how will your work change over the next two years?

These developments will not significantly change our work but will help to forward our goals.

5. What, if any, actions can the Management Board take to help ensure success in achieving your outcome?

The workgroup has been able to secure funding for Phases 1 and 2 of the 3-phase work plan to identify the extent to which management actions improve stream health and the multiple stressors that affect it. Sustaining funding through the third and final phase of the work plan will be critical to achieving this outcome. Assistance from the Management Board will be required in the form of seeking and obtaining that funding.