

QUARTERLY PROGRESS MEETING – August, 2019  
*Chesapeake Bay Program*

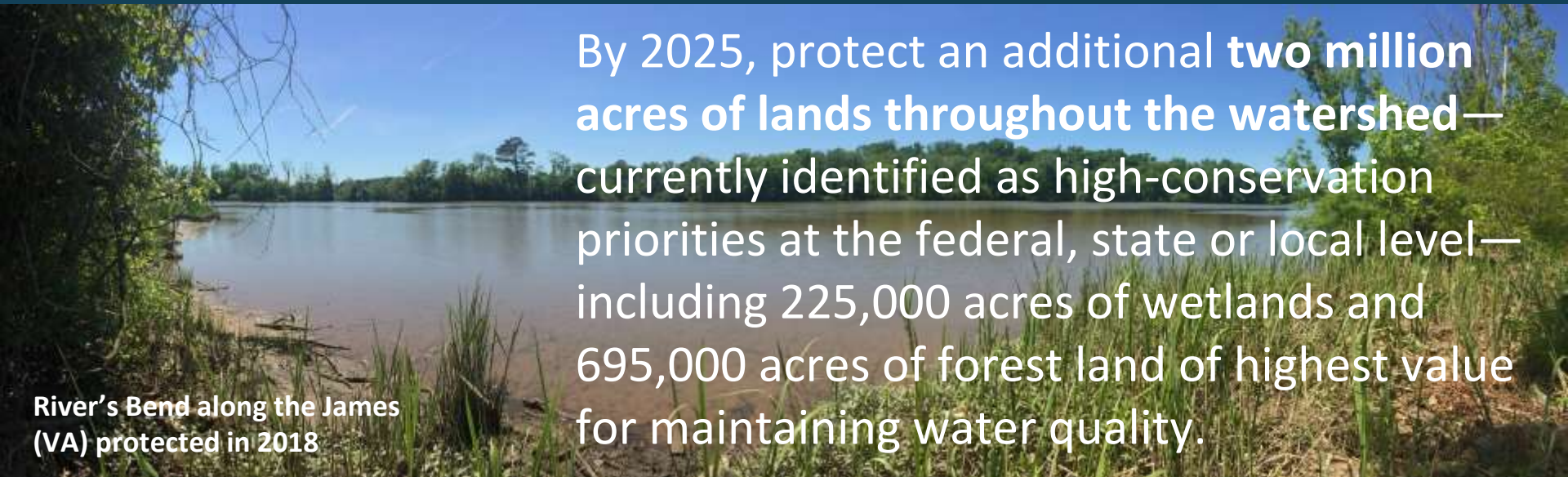
# Protected Lands Outcome GIT 5 Fostering Chesapeake Stewardship


*John Griffin, Chesapeake Conservation Partnership  
Jonathan Doherty, National Park Service  
Protected Lands Outcome Leads*

*Through the Chesapeake Bay Watershed Agreement, the Chesapeake Bay Program has committed to...*

By 2025, protect an additional **two million acres of lands throughout the watershed**—currently identified as high-conservation priorities at the federal, state or local level—including 225,000 acres of wetlands and 695,000 acres of forest land of highest value for maintaining water quality.

**River's Bend along the James  
(VA) protected in 2018**





28,300 acre Harriet Tubman Rural  
Legacy Area created in 2018 to support  
land conservation (MD)

**“Land conservation is a BMP  
that benefits *all* other outcomes  
in the agreement.”**

Kristin Saunders



## How You Can Help



Cookie Davis protected 2.3 miles of Rappahannock riverfront (VA) in 2018

- On track - 68% of 2 million acre goal achieved
- Management Board Asks:
  - Sustain and grow public financing for land conservation
  - Identify new sources of financing for land conservation (e.g. private capital)



Capital Region Land Conservancy protected the 871 acre Malvern Hill Farm (VA) in 2018

# Learn

*What have we learned in the last two years?*



## Successes and Challenges



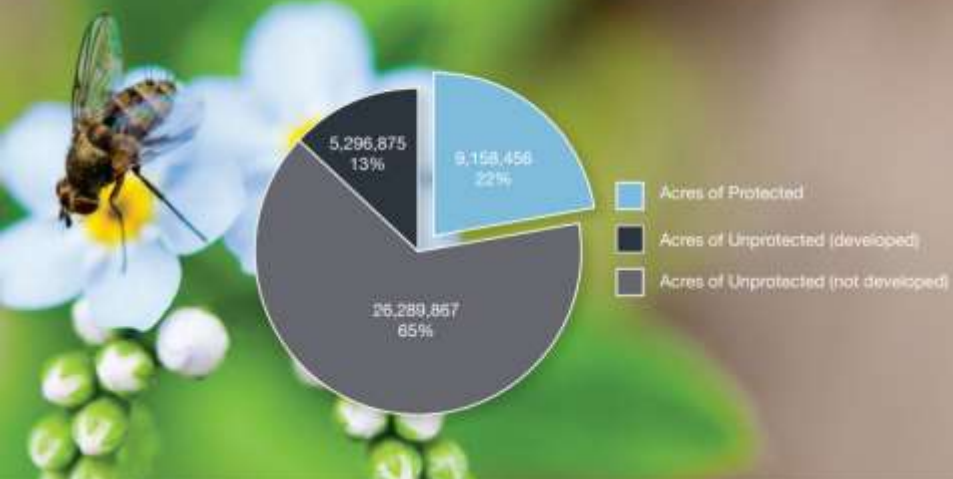
White Horse Mountain (WV) protected in 2018

- Progress is facilitated or constrained by availability of public and private sector financing sources.
- Sustaining and increasing funding levels critical to maintaining progress and meeting 2025 goal.
- Management actions provide information and education that supports public financing, policy and new financing sources.



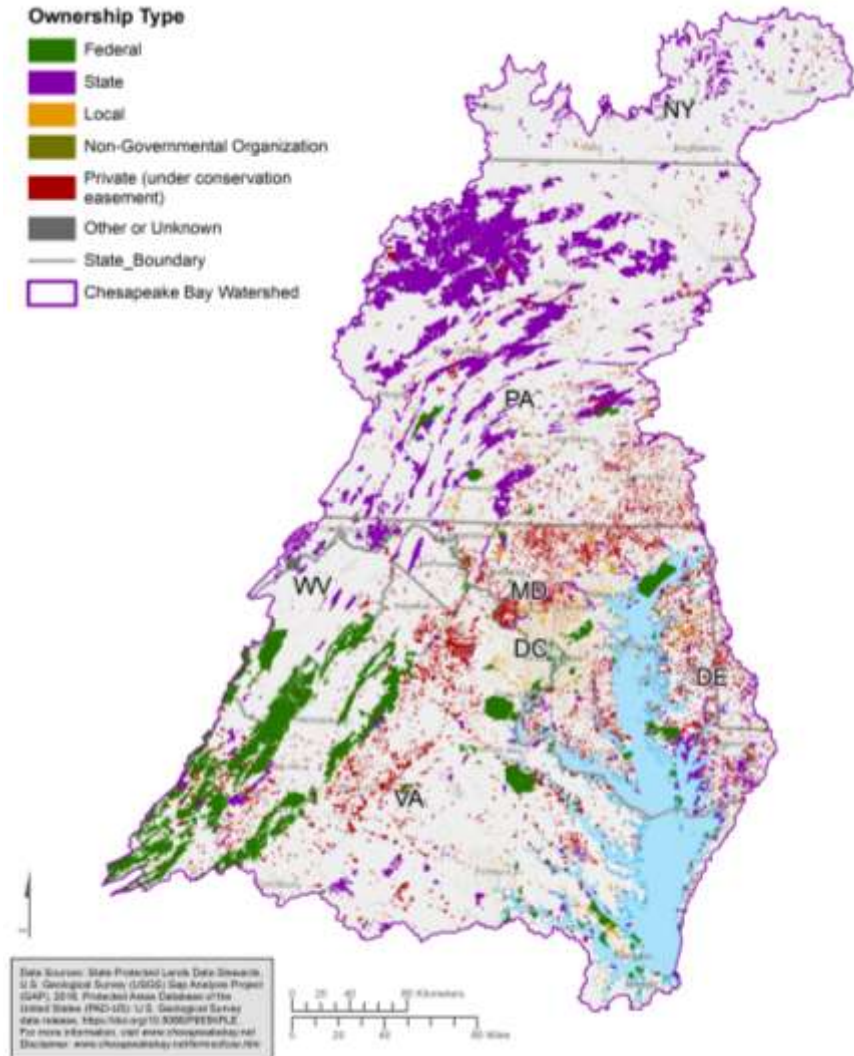
# What is our Expected and Actual Progress?

TOTAL ACRES OF PROTECTED LAND IN THE CHESAPEAKE BAY WATERSHED THROUGH 2018



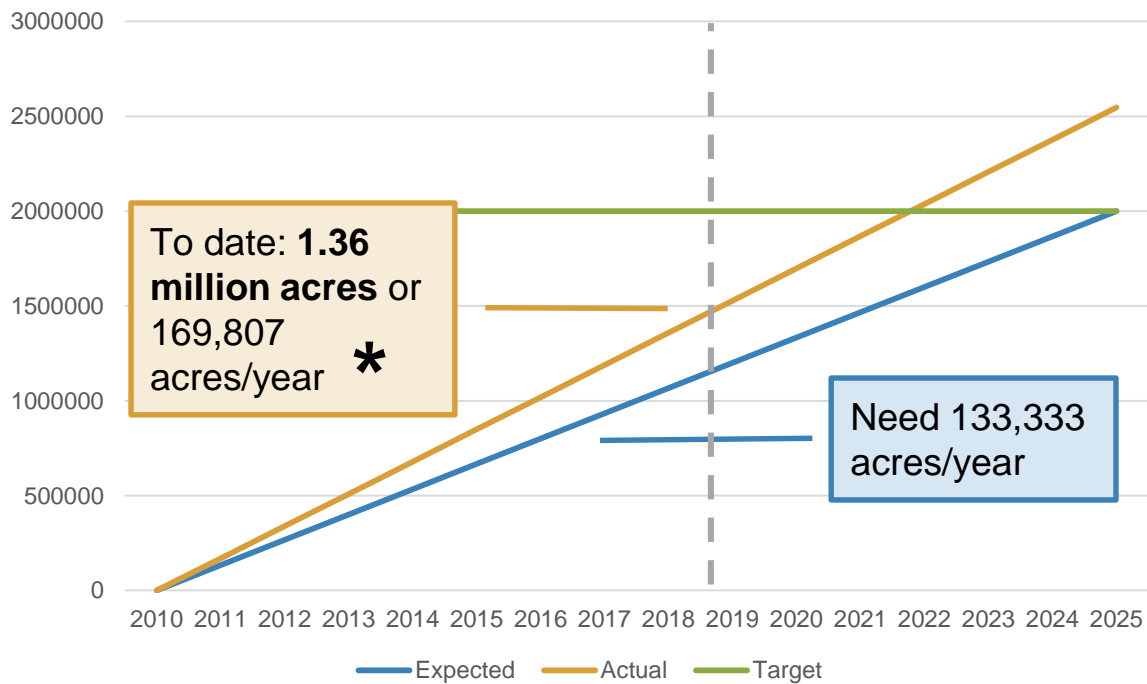
## Ownership Type

- Federal
- State
- Local
- Non-Governmental Organization
- Private (under conservation easement)
- Other or Unknown
- State\_Boundary
- Chesapeake Bay Watershed





## What is our Expected and Actual Progress?



Big Flats Wildlife Management Area (NY) protected in 2018





## On the Horizon



Hellam Hills Preserve (PA) protected in 2018

- **Fiscal:** Pressure for legislators and executives to reallocate state and federal land protection financing.
- **Policy:**
  - private capital investment
  - commercial scale solar and wind generation
  - infrastructure project mitigation impacts
  - land policy BMPs as part of Phase III WIPs
- **Scientific:** How will key trends/issues influence protection (climate, biodiversity, urban populations, development, etc.)



New 1,172 acre Wildlife Management  
Area (MD) protected in 2018

# Adapt

*How does all of this impact our  
work?*



Based on what we learned, we plan to ...



Michaux State Forest (PA) expanded in 2018

- Chesapeake Conservation Partnership working towards 2025 and longer-term goals beyond.

**Farms**  
**Forests**  
**Habitat**  
**Heritage**  
**Health**



All interconnected:  
Vibrant economy  
Strong communities  
Healthy people  
Working farms/forests  
Thriving native wildlife  
Clean water  
Healthy watersheds  
Shared heritage  
Recreation  
Quality of life

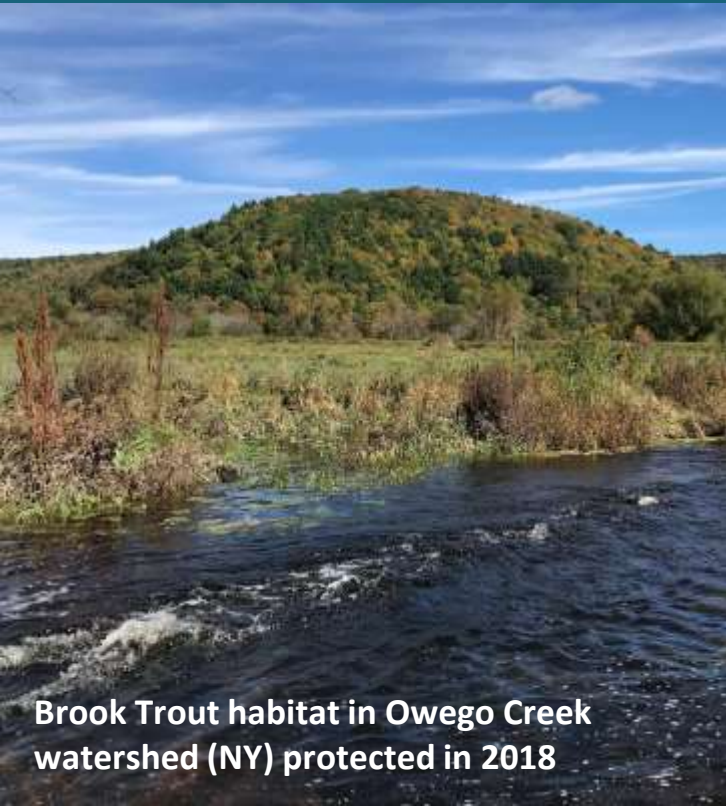


Based on what we  
learned, we plan to ...



Crispus Attucks Park (DC) protected in 2018

- Current core management of actions remain sound and on target:
  - Sustain and expand federal, state, local and private sector funding and incentives for conservation
  - Build and sustain public support for land conservation
  - Increase capacity and effectiveness of land trusts
  - Improve development, sharing and use of integrated conservation value data for the watershed
  - Improve planning and policies for addressing threats to conservation values



Brook Trout habitat in Owego Creek watershed (NY) protected in 2018

# Help

*How can the Management Board lead the Program to adapt?*



## Help Needed



Gatewood Preserve (MD) protected in 2018

- Invest in engaging new generation of conservationists
- Sustain and grow public financing for land conservation
- Facilitate new sources of financing for land conservation (e.g. private capital)
- Fund science and research on trends influencing land protection

**QUARTERLY PROGRESS MEETING**  
*Chesapeake Bay Program*

# Discussion

