

CBSAC

2012 Blue Crab Advisory Report

Figures

Figure 1. Winter dredge survey index of total blue crab abundance (density of males and females, all sizes combined) in Chesapeake Bay, 1990 through 2012. Error bars represent 95% confidence intervals.

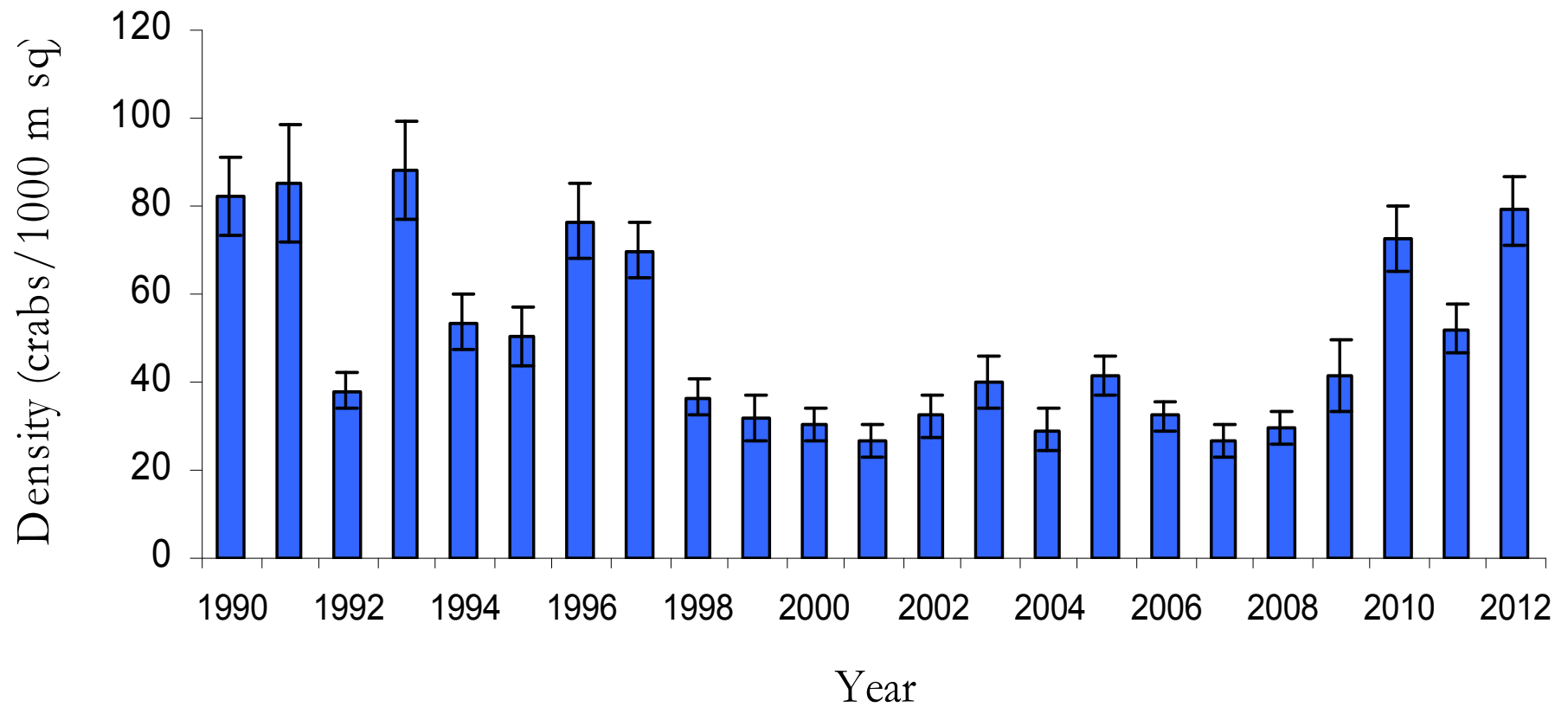


Figure 2. The female-specific control rule for the Chesapeake Bay blue crab fishery. In 2011, abundance was below the overfished target, while the exploitation rate was below the overfishing target. Reference points were derived from a statistical assessment model incorporating multiple surveys. Please see text for explanation of terms.

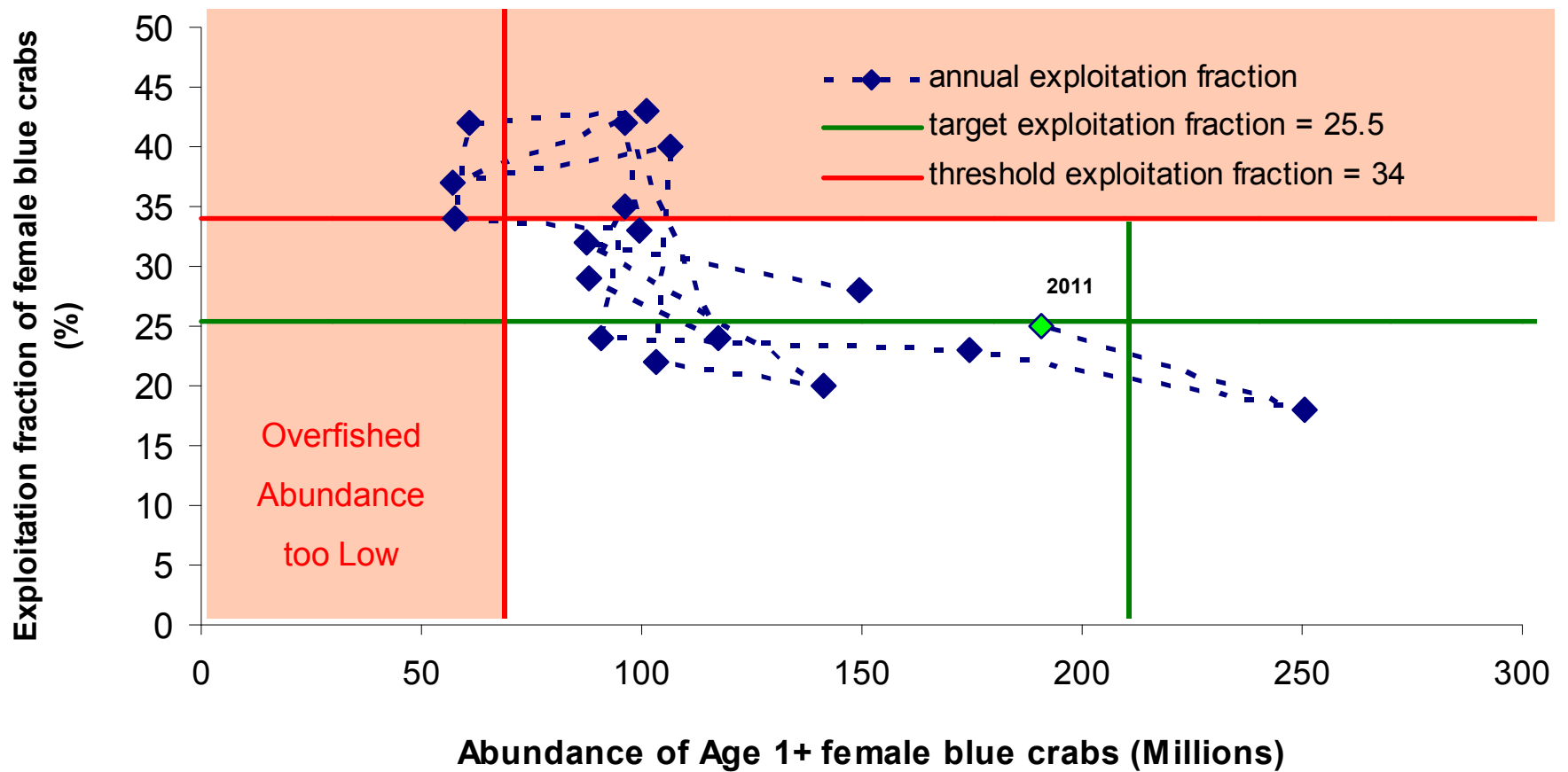


Figure 3. Winter dredge survey estimate of **abundance of female blue crabs age one year and older** (age 1+) 1990-2012 with female-specific reference points. These are female crabs measuring greater than 60mm across the carapace and are considered the ‘exploitable stock’ that will spawn within the coming year.

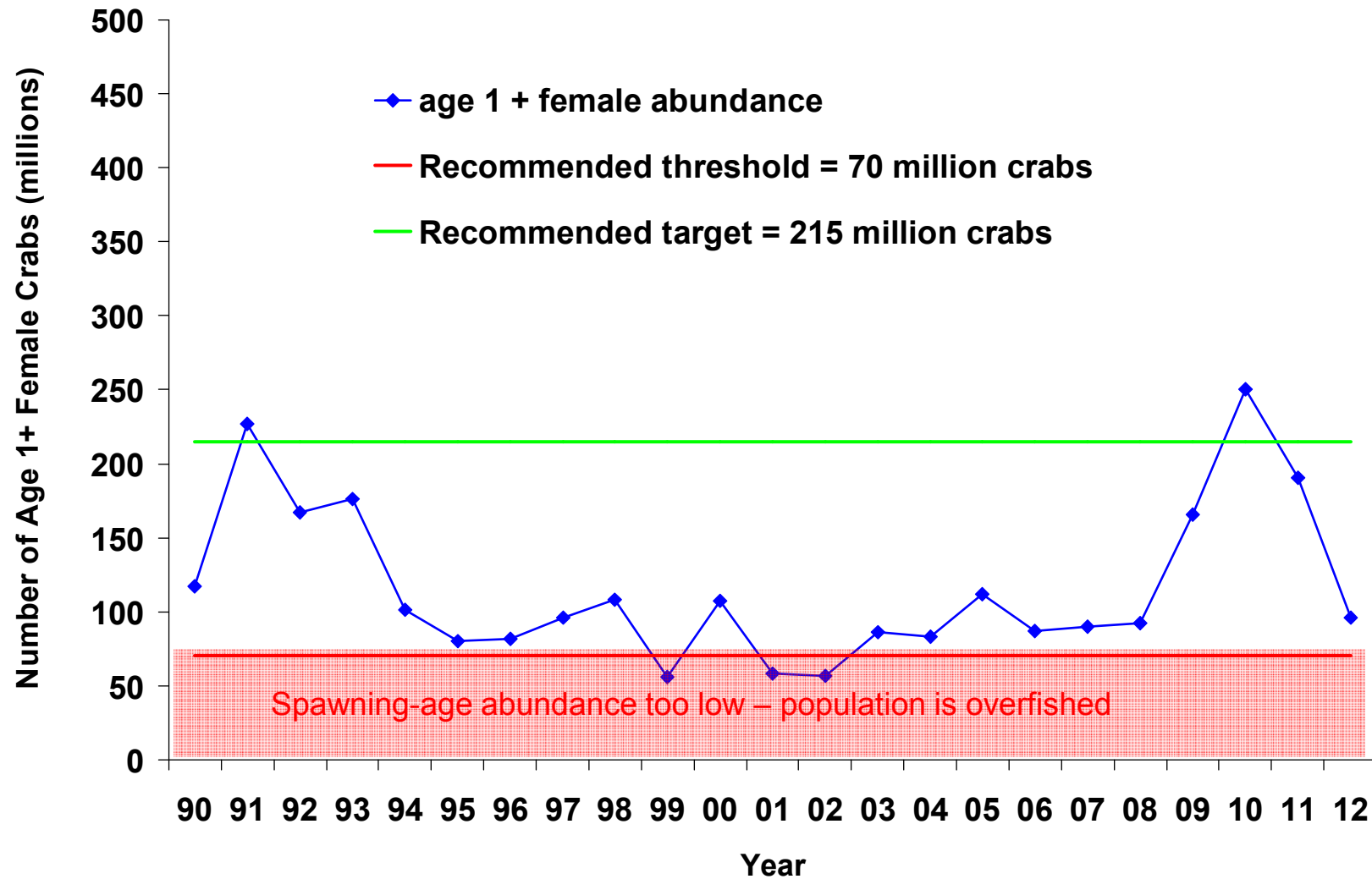


Figure 4. Winter dredge survey estimate of **abundance of male blue crabs age one year and older (age 1+)** 1990-2012. These are male crabs measuring greater than than 60mm across the carapace and are considered the ‘exploitable stock’ that will spawn within the coming year.

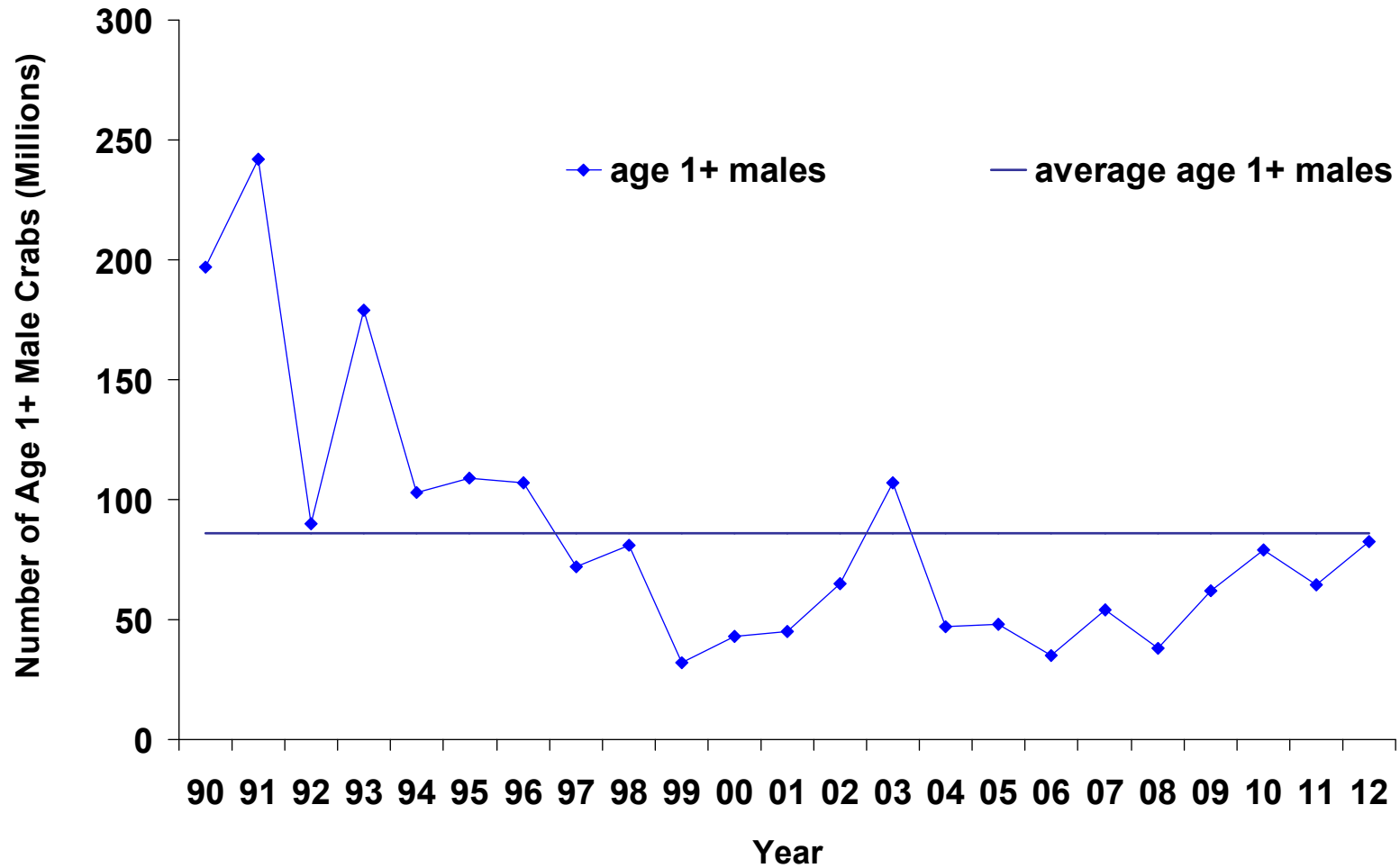


Figure 5. Winter dredge survey estimate of **abundance of juvenile blue crabs (age 0)**, 1990-2012. These are male and female crabs measuring less than 60mm across the carapace.

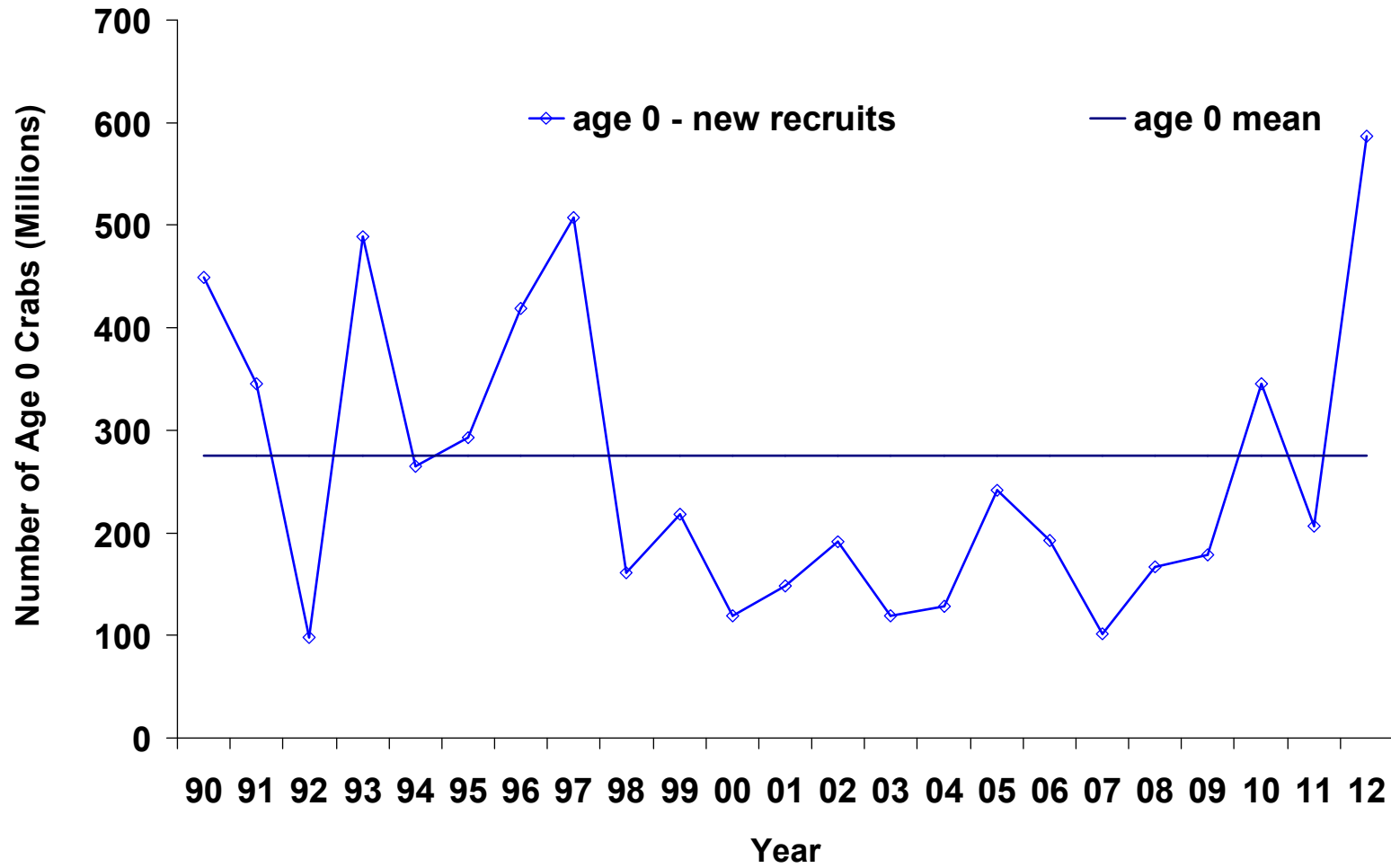


Figure 6. Maryland and Virginia Chesapeake Bay commercial blue crab harvest in millions of pounds, 1993-2011.

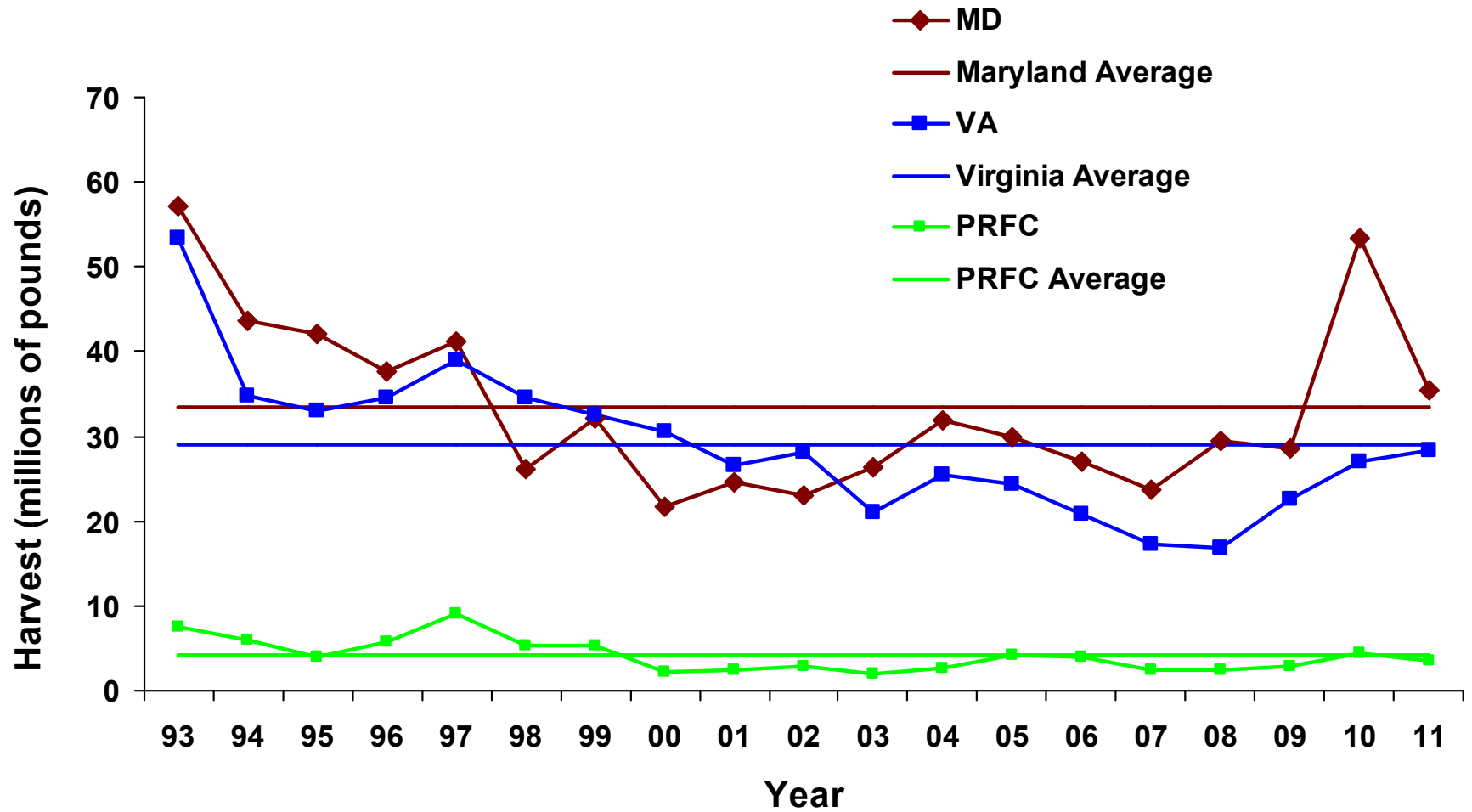


Figure 7. Trends in Bay-wide male and female blue crab abundance and male and female commercial harvest within Maryland and Virginia since the implementation of female-specific regulations.

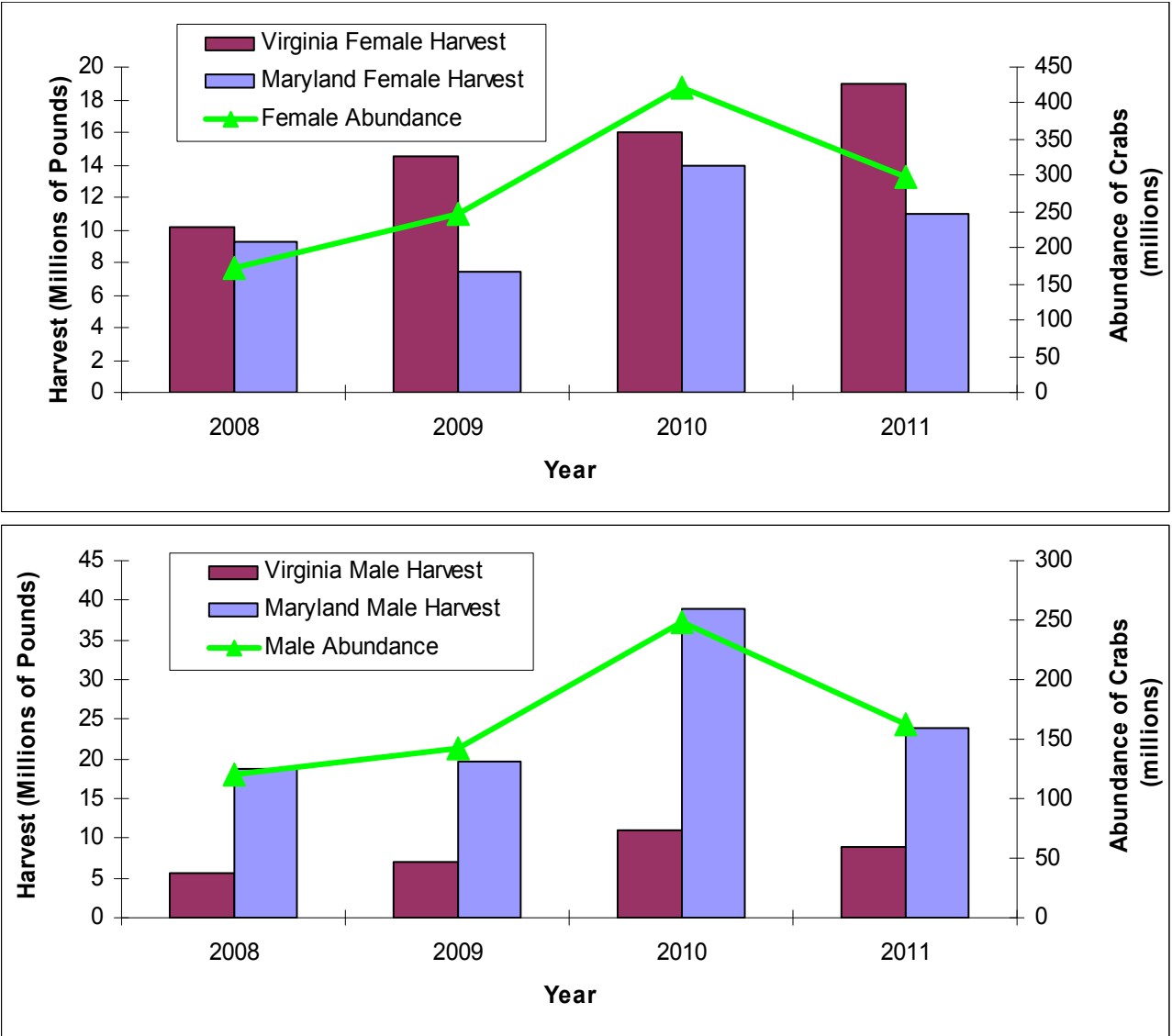


Figure 8. The percentage of female crabs removed from the population each year by fishing relative to the female-specific target and threshold levels 1990 through 2011.

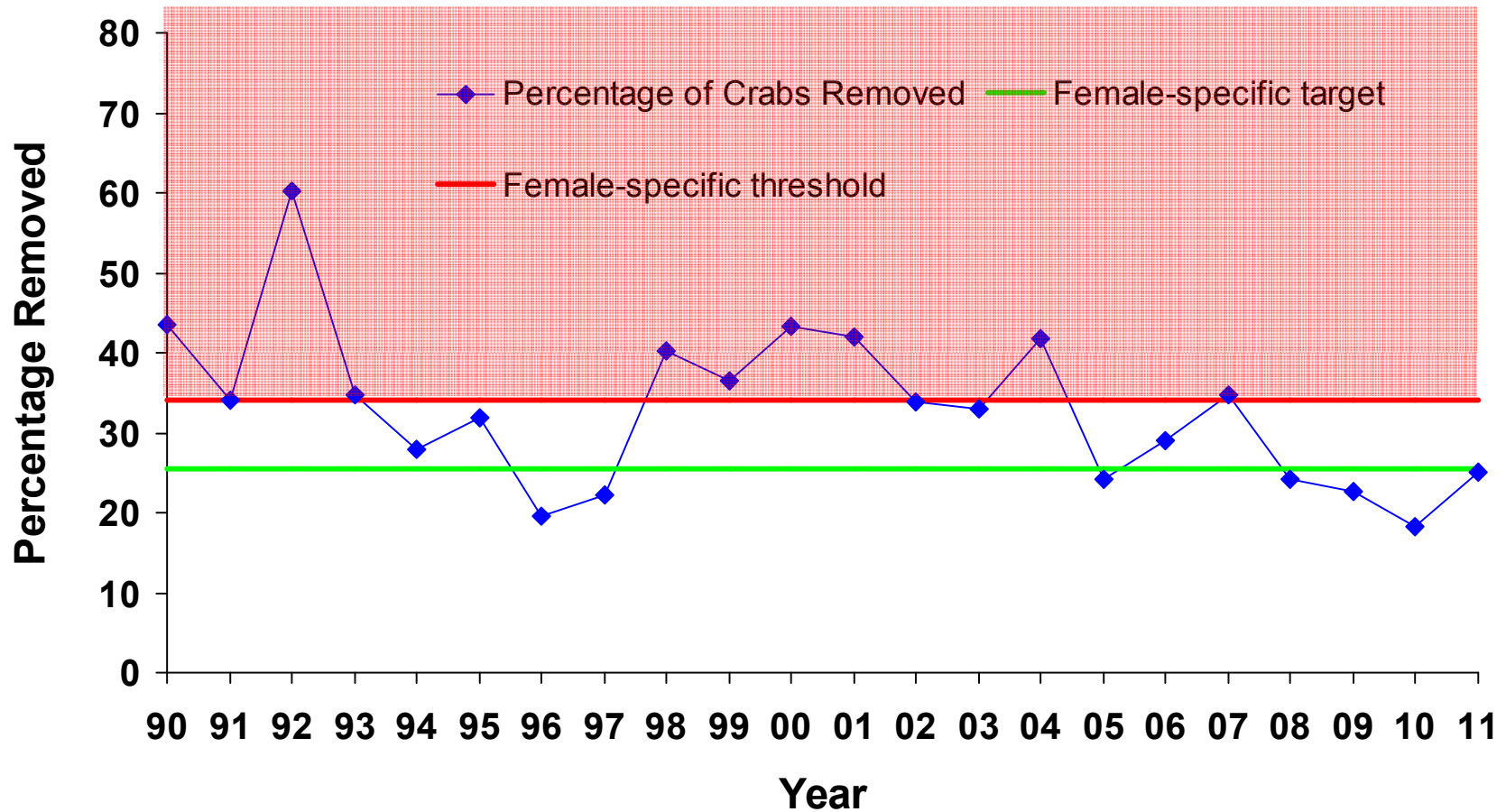


Figure 9. The percentage of male and female crabs removed from the population each year by fishing relative to previously used target and threshold levels 1990 through 2011.

