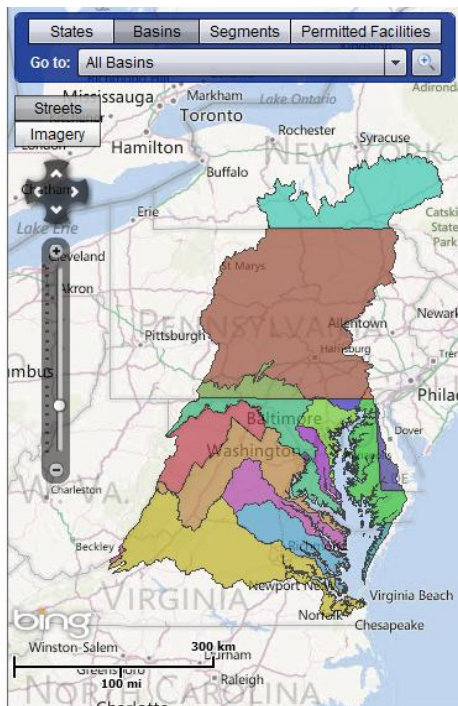
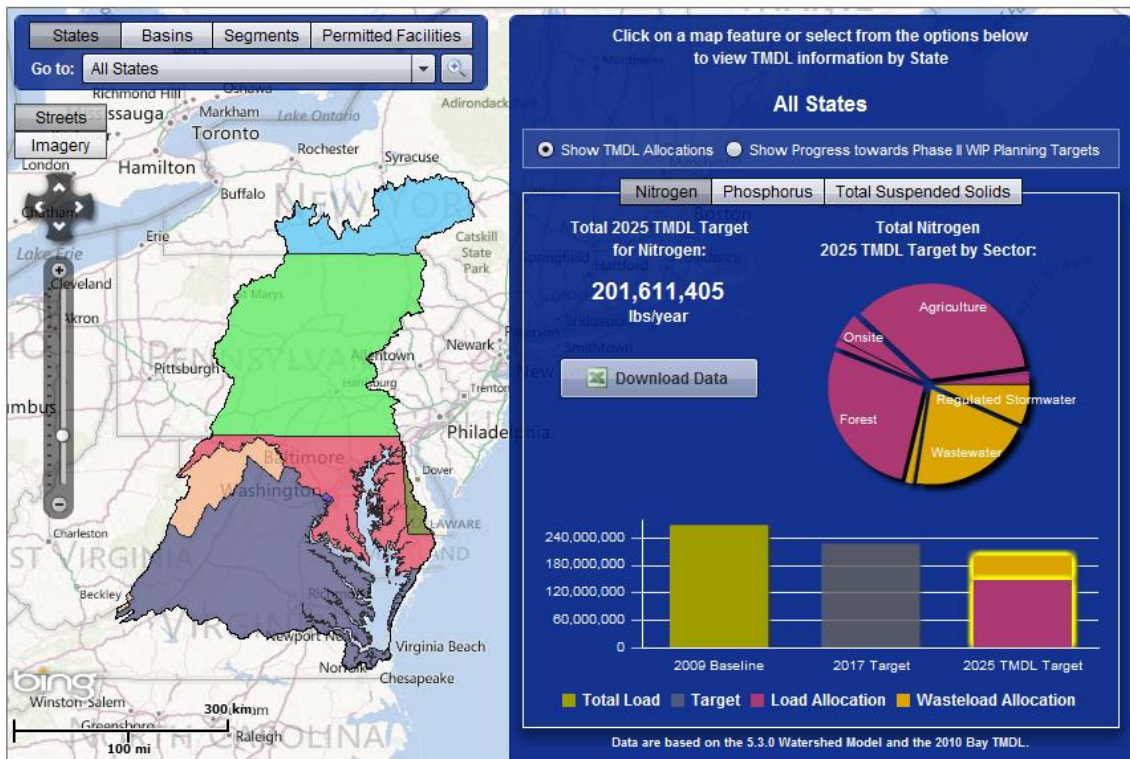


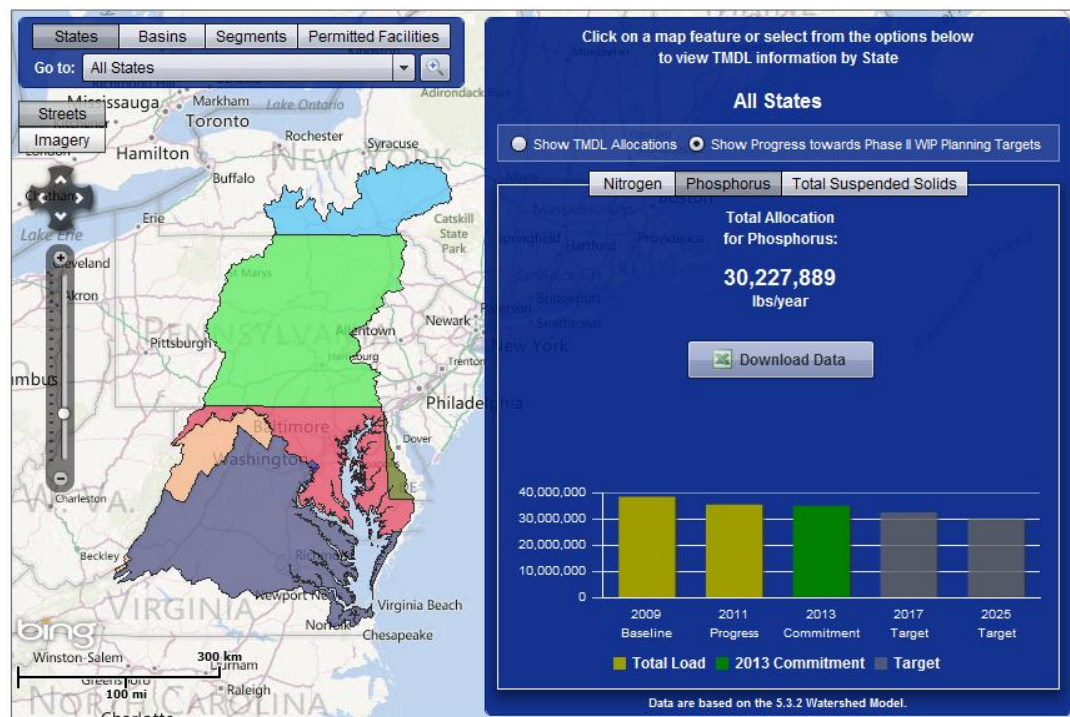
I. LOAD Data visualized in ChesapeakeStat: CURRENT Views (5.3.0 WSM)

1. STATE, BASIN, and SEGMENT – 2009, 2017 – Total Loads; 2025 – Loads by Sector

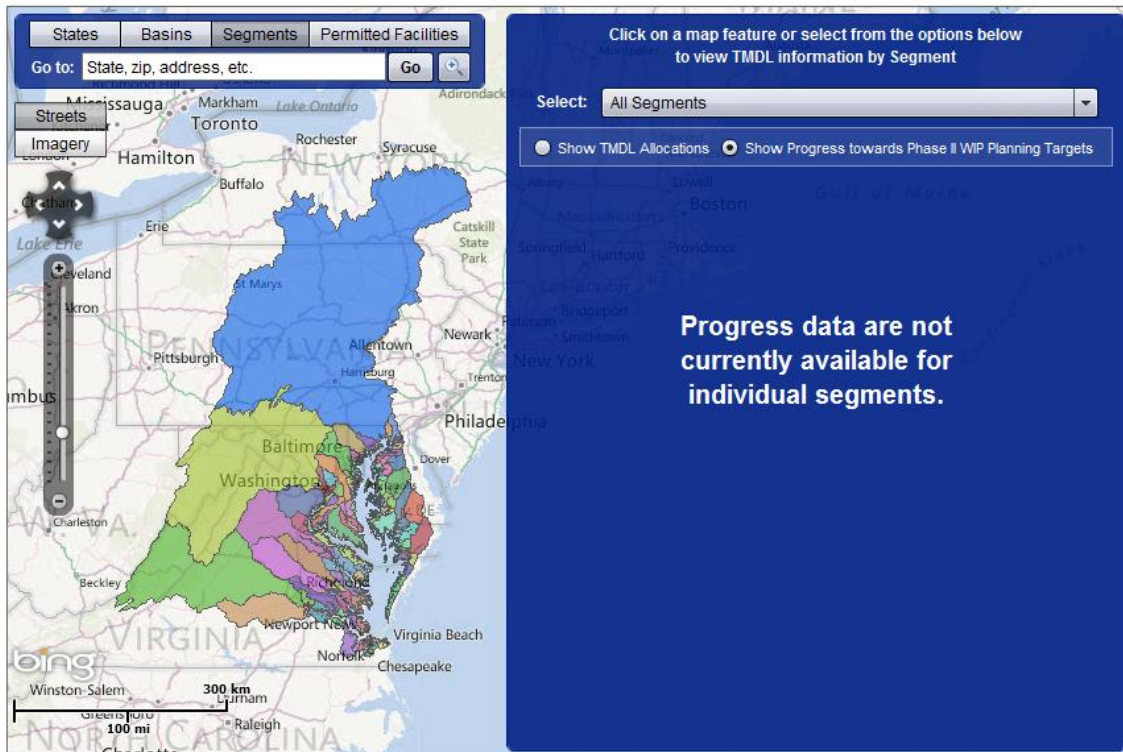


II. LOAD Data visualized in ChesapeakeStat: CURRENT Views (5.3.2 WSM)

1. STATE and BASIN – 2009, 2011, 2013, 2017, 2025 – Total Loads



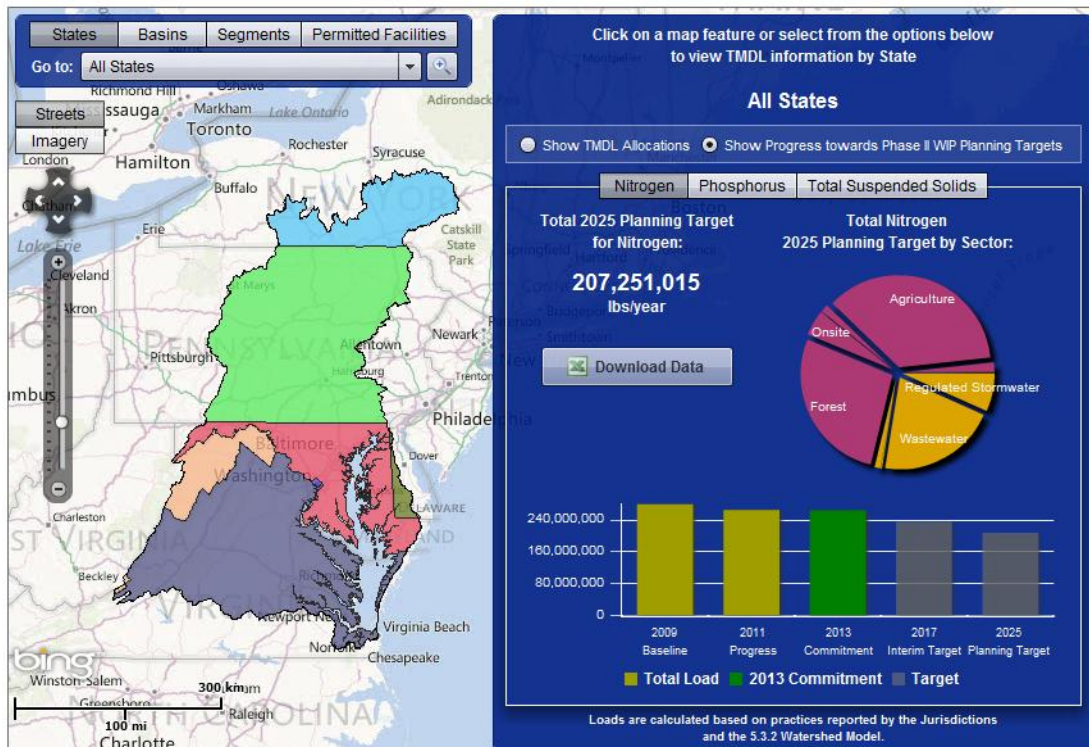
2. SEGMENT – No Data



-----ALL 5.3.2 DATA SHOWN BELOW ARE DRAFT-----

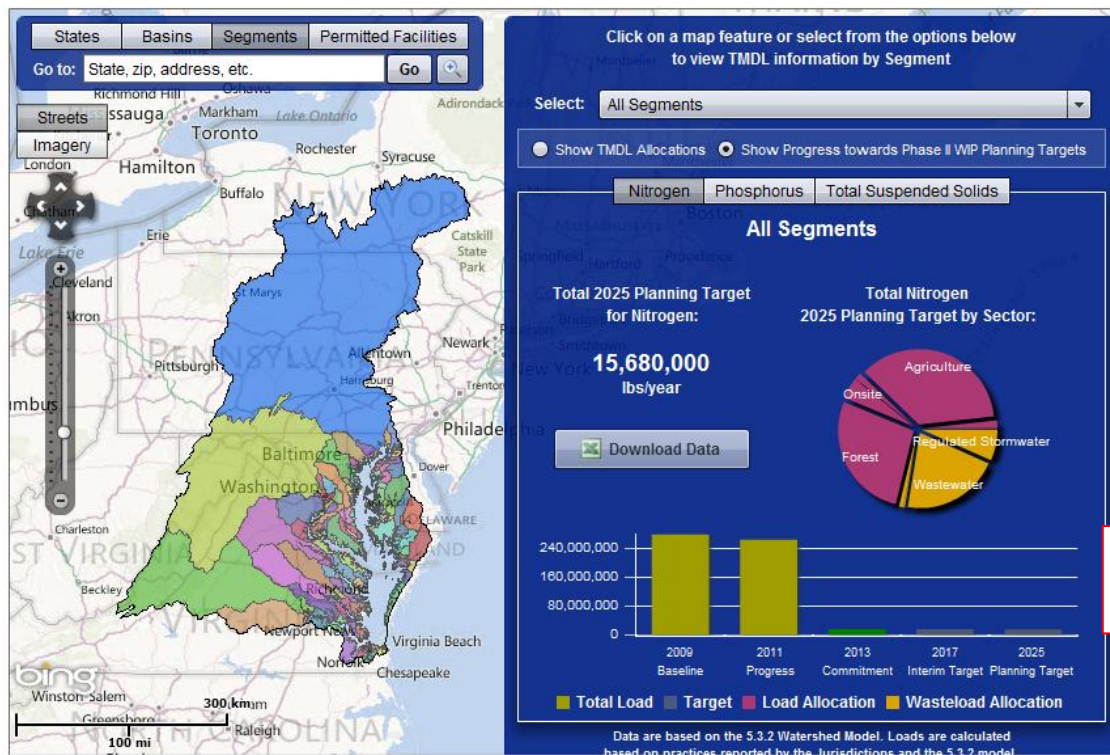
III. LOAD Data visualized in ChesapeakeStat: **NEW** Views (5.3.2 WSM + Phase II WIPs)

1. STATE and BASIN – 1985, 2009, 2011, 2013, 2025 – Loads by Sector; 2017 – Total Loads only



Doesn't yet show **1985 bar** or **stacked bars** for all years (except 2017).

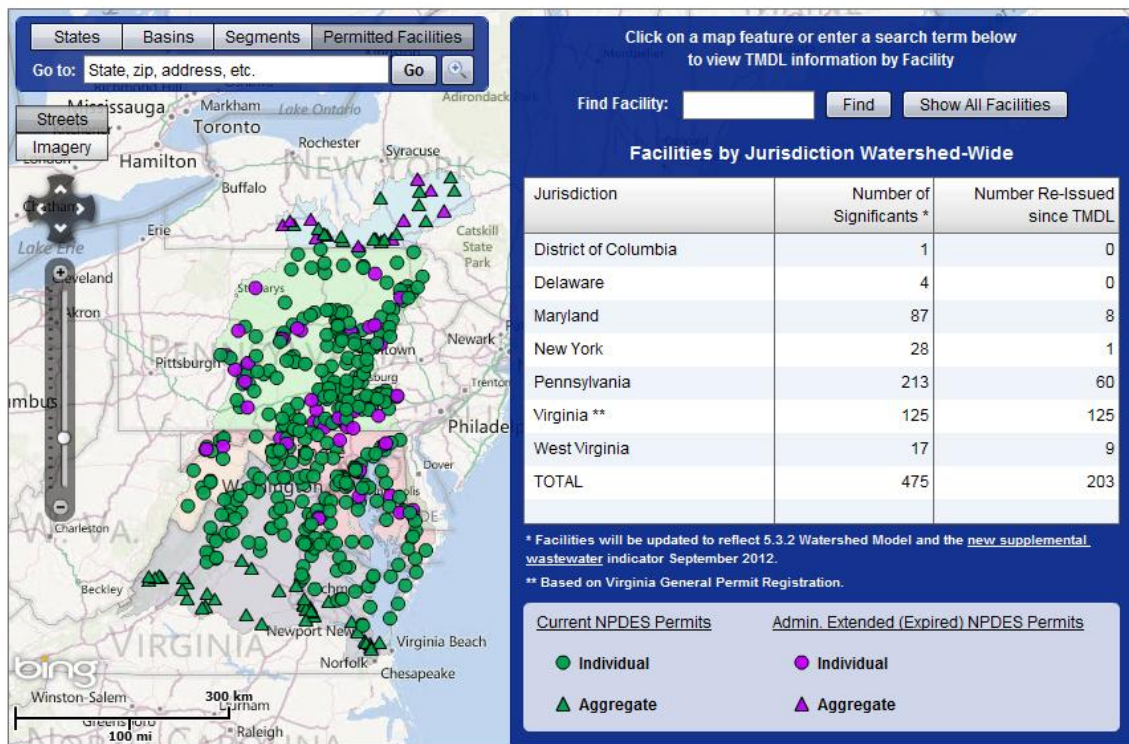
2. SEGMENT – 1985, 2009, 2011, 2013, 2025 – Loads by Sector; 2017 – Total Loads only



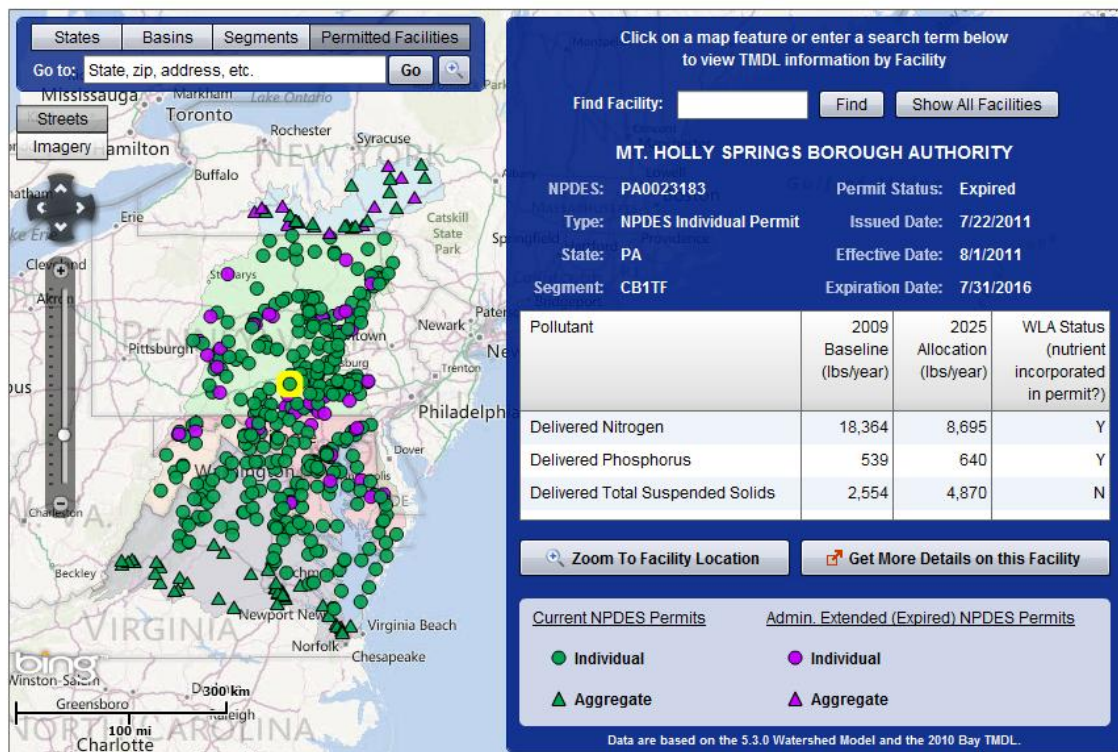
Doesn't yet show **1985 bar** or **stacked bars** for all years (except 2017).

IV. FACILITIES Data visualized in ChesapeakeStat: CURRENT Views (5.3.0 WSM)

1. Sum – # Sig/state, # re-issued/state



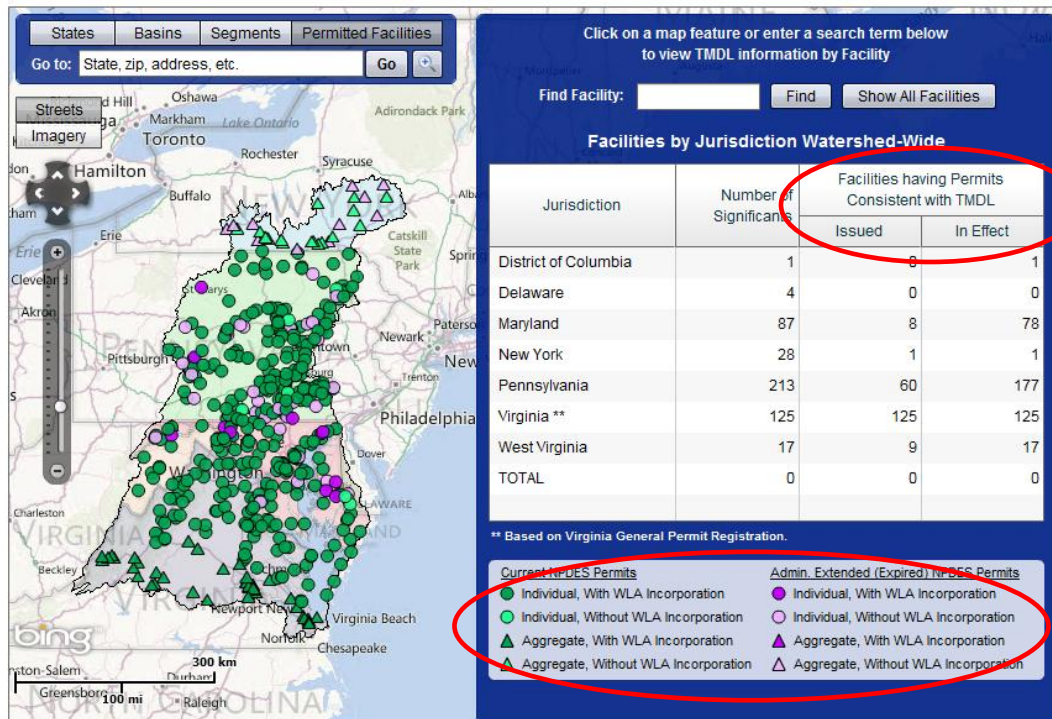
2. Individual – DEL Load – 2009 Baseline, 2025 Allocation; Permit status (as of 3/30/12)



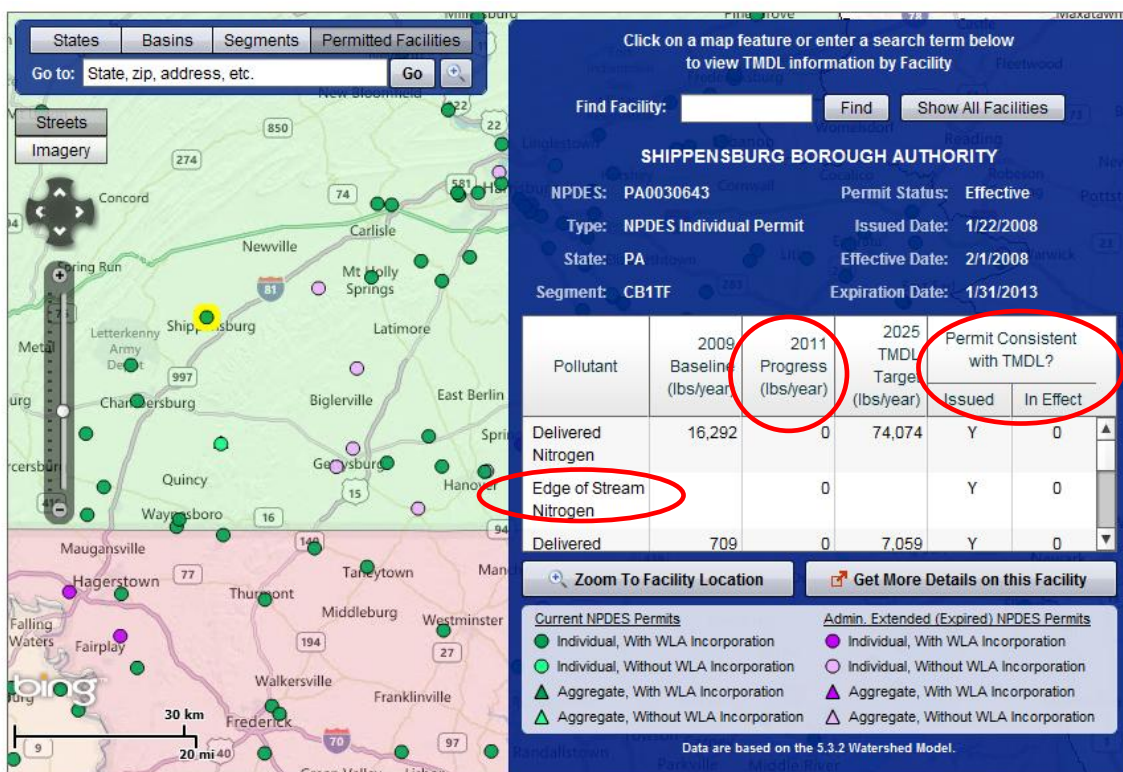
-----ALL 5.3.2 DATA SHOWN BELOW ARE DRAFT-----

V. FACILITIES Data visualized in ChesapeakeStat: **NEW** Views (5.3.2 WSM + Phase II WIPs)

1. Sum – # Sig/state, # re-issued/state, **addition of WLA incorporation status – new map symbology and legend. Permit status added.**



2. Ind. Facilities – 2009 Baseline, **2011 Progress**, 2025 TMDL Target, Permit Status info refined with **“consistent with TMDL issued and in effect.”** EOS data added.



VI. Future Data visualizations being considered for displaying via ChesapeakeStat

- 1. WWTP non-significants**
- 2. Other NPDES permits, *e.g.*, MS4, construction GPs**