



**Chesapeake Bay Program**  
*Science. Restoration. Partnership.*

# Technical Assistance Update - Adapting to Changing Environmental Conditions Outcome

March 19th Outcome Meeting

# What is Technical Assistance?

Members of the team: Julie Reichert-Nguyen, Daniel Koval, Jeffrey Lerner, Peter Claggett, Sophie Waterman, Taryn Sudol, Jackie Pickford, Katie Brownson, Kevin Dubois, Marissa Baldine

Our work with Local Concepts + members of Healthy Landscapes. Our goal is to:

- **Discuss overlap** between outcomes in Healthy Landscapes, learn about each others networks, how we can come together to support ACEC in building a tidal and non-tidal network
- **Develop strategic networking plan** including communication and engagement strategies
- **Discuss identified needs:** Clearly defined roles, regular network communication, how to tackle tidal and non-tidal aspects of our work

# Network Assessment Discussion

The roles of partners, where we can gather data, and how to communicate (what exists/where are gaps)

## Network health considerations

- Shared purpose, value generated, communication, distributed leadership

## Network development considerations

- Value proposition, network gaps, communication and resource flow, where collaboration is happening/where it could happen more

## Opportunities to strengthen the network

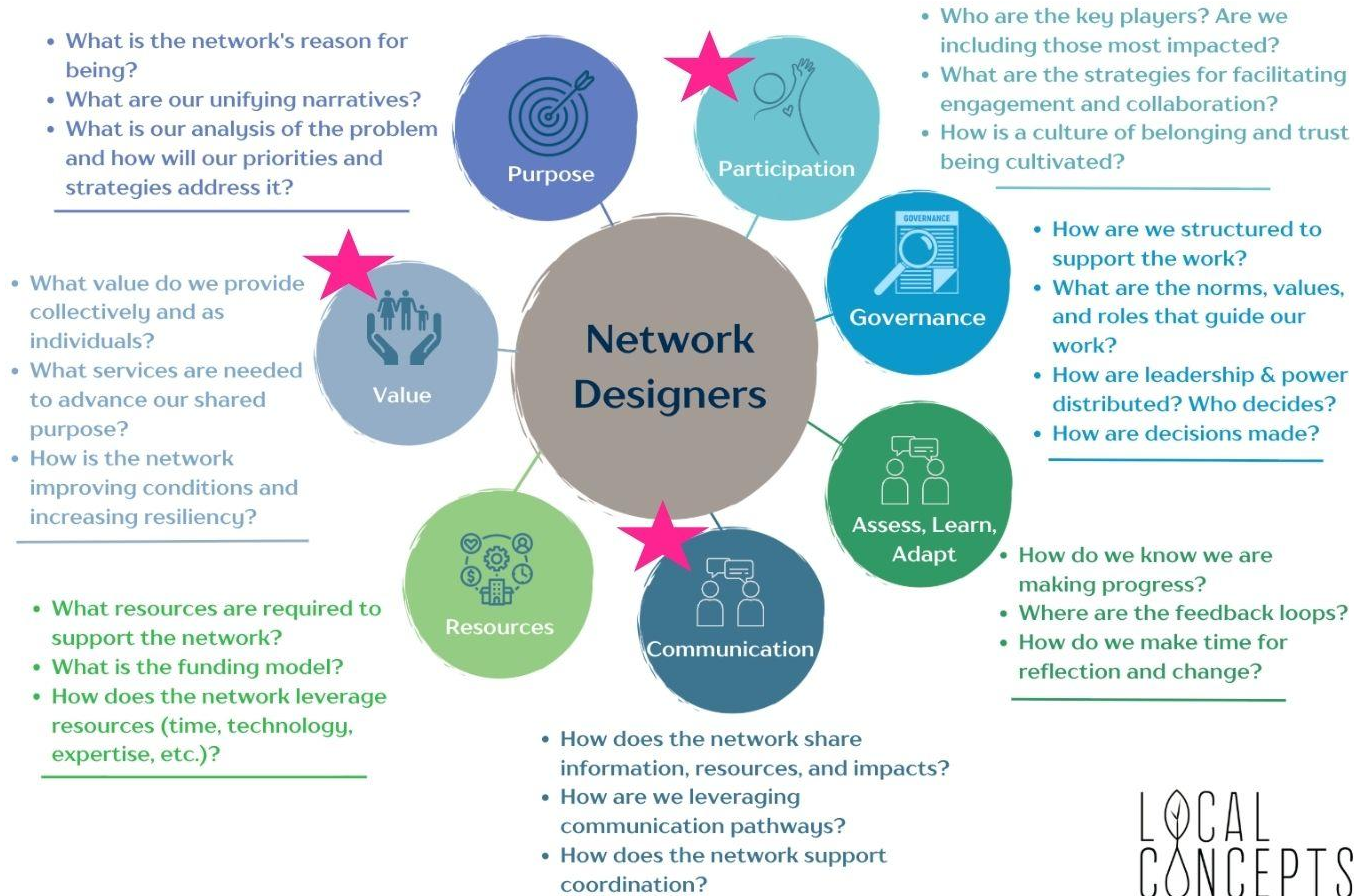
- Create clear communication pathways, build a collaborative structure (eg. joint meetings), strategic local engagement, leverage resources such as data platforms and communications team

Example, utilizing on the ground practitioners

Example, packaging data in a way that serves all outcomes

# Network Architecture

## Key Considerations for Network Designers



# Next Steps

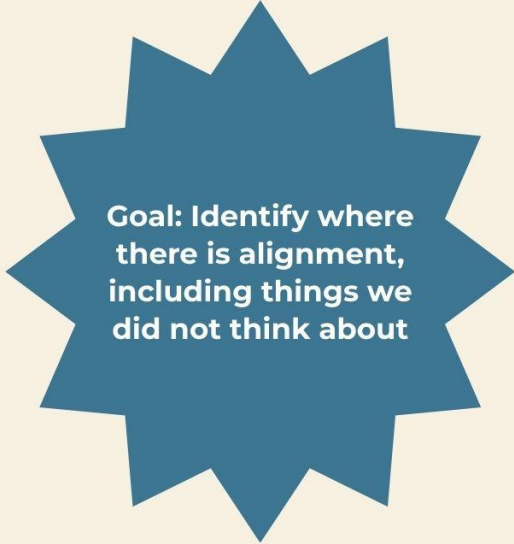
Network sharing - each outcome will present to the larger group following the prompts below, and we will discuss the questions below:

Prompts:

- Group name
- Share 1-2 priorities your group has been working on.
- Share the networks you rely on to get your work done.
- How do these networks support your work?
- What gaps or challenges does your group face when working on your priority areas? (e.g. partners, etc.).

Discussion:

1. How might ACEC add value to your group's work?
2. How might your group add value to ACEC's work?
3. What new partners do you need to engage in your network to accomplish work on the revised agreement?



**Goal: Identify where there is alignment, including things we did not think about**

## Next steps ctnd.

After the presentations, **we will determine network overlap areas, gaps,** and discuss how we can **leverage our current networks** to help ACEC build a **tidal** and **non-tidal** network

Lessons already learned:

- Collaborate in more place based way, eg. who are more localized networks we want to connect with
- Let people tell us what they need, bottom-up approach
- Assessing where changing conditions is likely to change LULC in local planning, utilize resiliency experts in the Forest Service, joint meetings with local government leadership/LUWG/ACEC on local county land use priorities



Chesapeake Bay Program  
*Science. Restoration. Partnership.*

# Workgroup Plans for Adapting to Changing Environmental Conditions (ACEC) Outcome

Julie Reichert-Nguyen, NOAA/Adaptation Coordinator  
3/19/2026

**Protect valued areas:** forests, wetlands, farmland, tribal lands, urban greenspace, and lands supporting healthy streams.



**Restore and maintain forests and trees:** in communities, riparian areas, and other areas.



**Inform land use planning decisions:** produce and share data and case studies relevant to both local needs and the health of local waterways.

**Reduce future risks to people and habitats:** from changes in temperature, precipitation, and sea level rise



# ACEC Outcome

**Increase the capacity for pursuing solutions, including those that are nature-based, to improve planning and responses to changing conditions while balancing long-term resiliency of watershed communities, economies, and ecosystems.**

Focuses on Place-based Capacity-building to use Nature-Based Solutions in Tidal & Non-Tidal areas

## TARGETS

- By 2040, support at least seven sub-watershed areas with knowledge-sharing and technical assistance to identify adaptation options with a preference for nature-based solutions. These solutions include restoration and protection projects that will help address risks to people, infrastructure and habitats from changes in temperature, precipitation and landscapes.
- By 2040, inform and lead to an increase in the implementation of the identified adaptation options that prioritize and integrate nature-based solutions in the above sub-watershed areas.

# Natural and Nature-Based Solutions/ Green Infrastructure

↑  
Changing Conditions

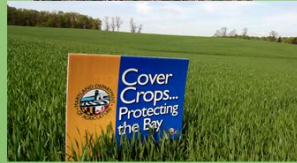
**MORE  
PRECIPITATION**

**Landward Zone**

Forest Buffers



No Till Farming/  
Cover Crops



Stream Restoration/  
Restore Flood Plain  
Connectivity



Bioretention Basin



**WARMING  
TEMPERATURES**

**Transition Zone**

Living Shoreline



Tidal Marsh Migration & Restoration



**RISING SEA  
LEVELS**

**Waterward Zone**

Oyster Reef Restoration



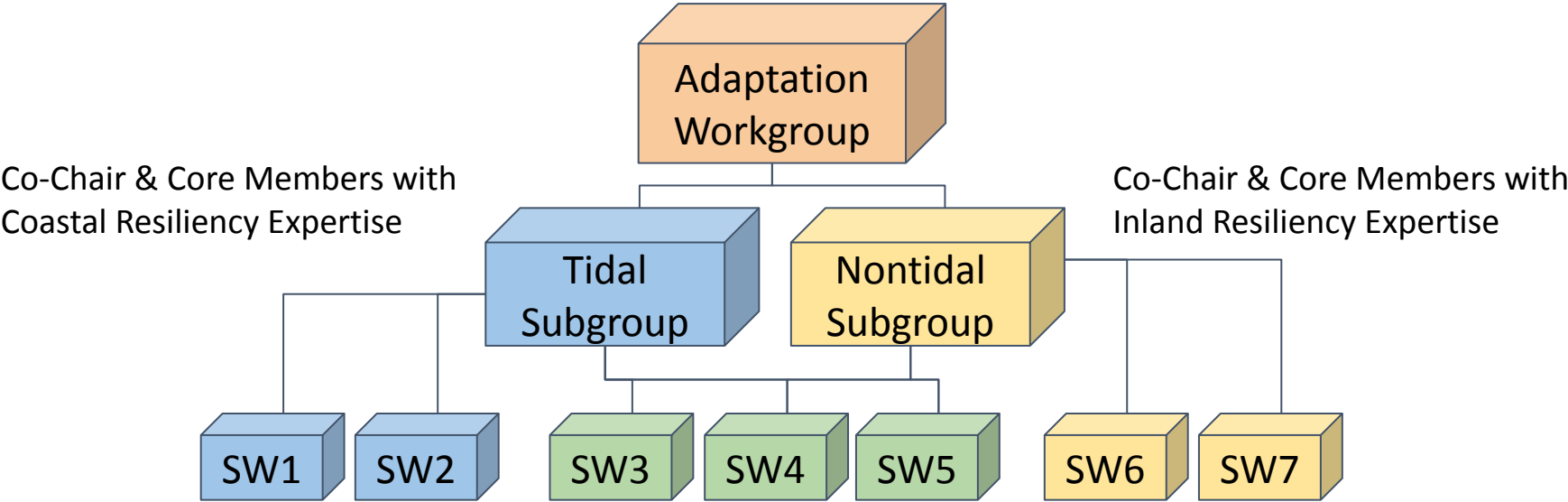
Island Ecosystem Restoration



Submerged  
Aquatic  
Vegetation  
Restoration



# Adaptation Workgroup–Structure Ideas



Strategic Networking  
For selected Subwatersheds (SW), partner with Local/Regional Networks

# Adaptation Workgroup— Principles

- Serve as a connector and translator
- Build strategic capacity for adaptation
- Use a place-based and needs approach
- Prioritize implementation with science and planning
- Foster an action-oriented partner network



AI-Generated

ACEC Thought Partners: Ben McFarlane (HRPDC), Cassie Davis (NY), Jackie Specht and Kristin Saunders (MD)

# Next Steps



- March/April: Announcement for Tidal and Nontidal Co-Chair nominations
  - April/May: Recruit core members for Tidal and Nontidal subgroups
  - May: Initial ACEC Management Strategy development meeting
  - June: Potential Healthy Landscapes Goal meeting
  - July-August: Fine tune ACEC Management Strategy components
- 