

# Office Hours

10/11/2024

Tom Butler, EPA

A day for decisions:

---

Manure Applications

---

Crop Yields

---

Industry Data

# What goes into a decision?

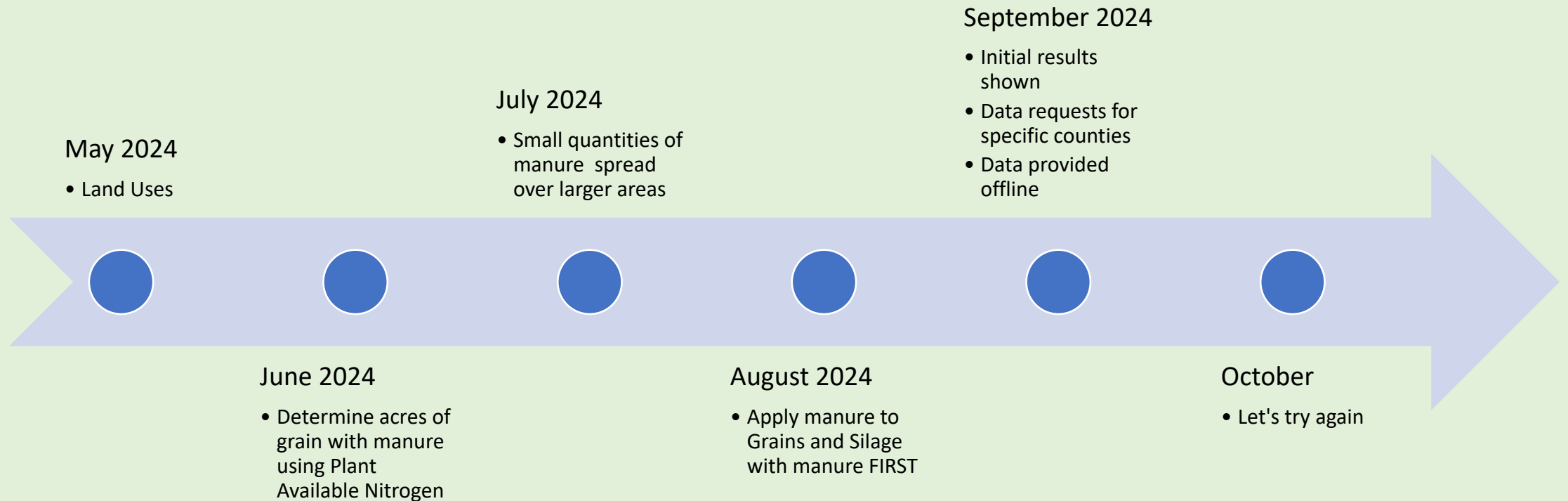
- A statement is made
- Ask about objections
- If so, we call each voting member to get their comments

## Consensus Continuum

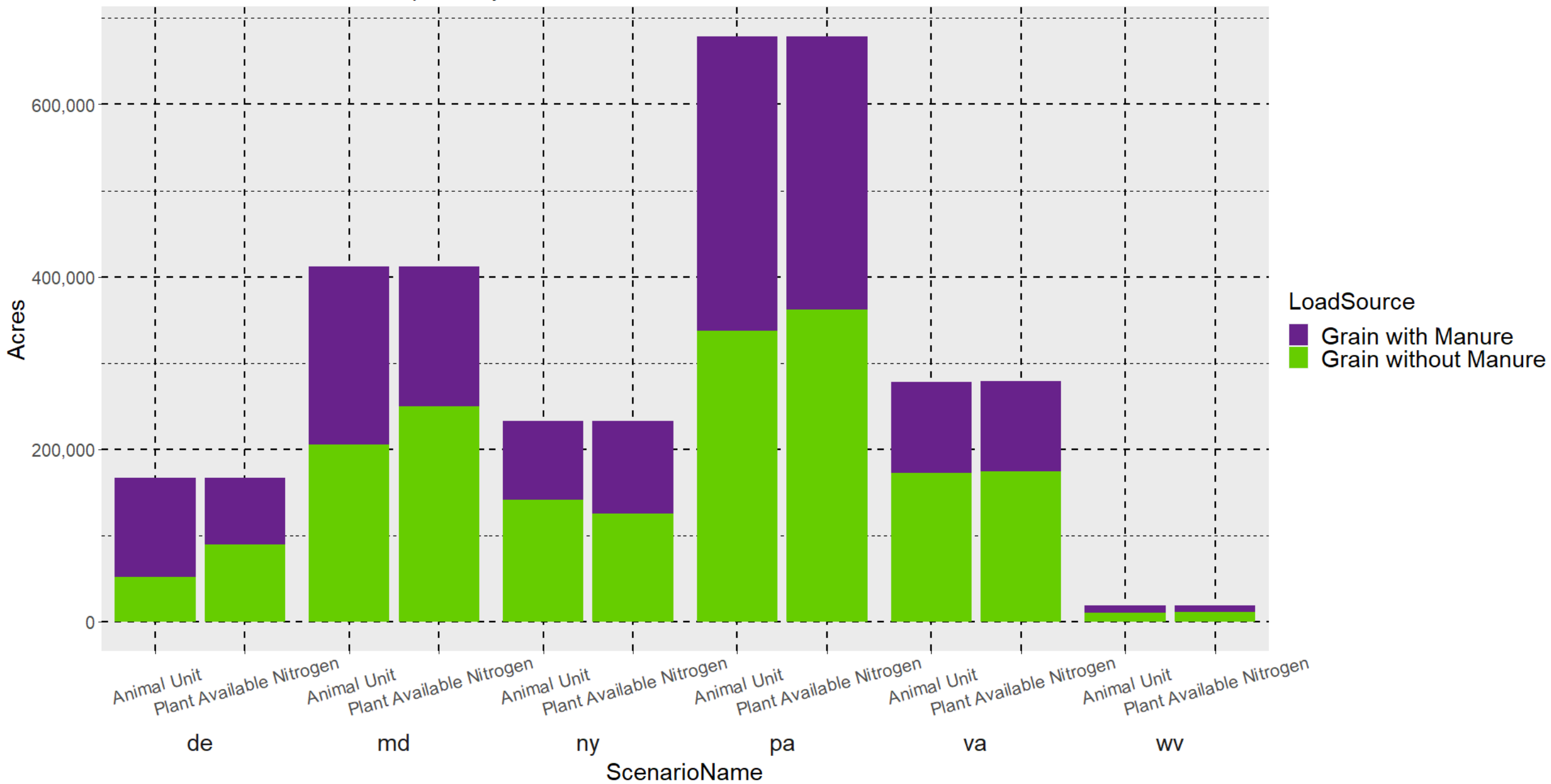


# Manure applications

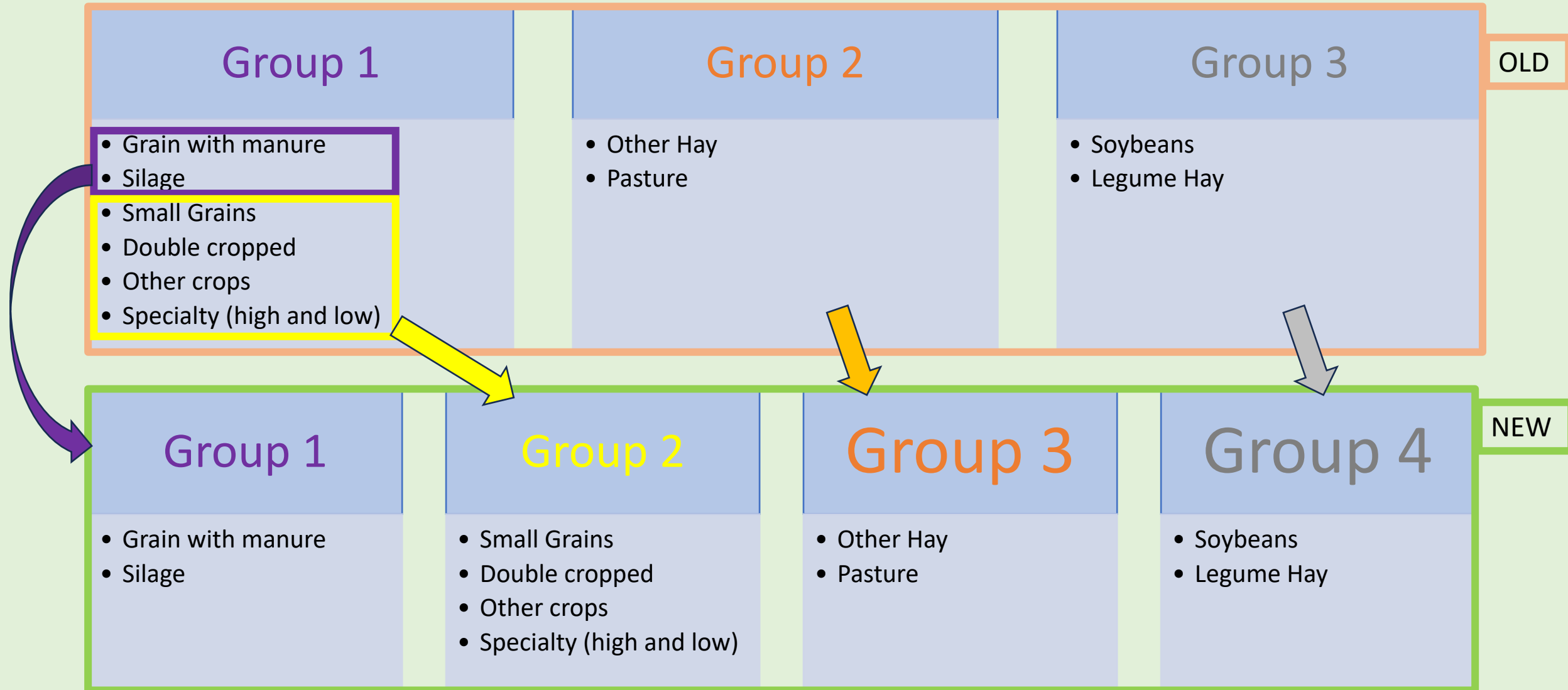
# Setting the stage:



AU vs PAN Grains acres compared by state 2020



# Recap:



# Manure Applications

## Proposed decisions:

***Should the acres of Grains with Manure should be determined using Plant Available Nitrogen?***

***Should the manure spread algorithm be modified to create a fourth group as shown in this presentation?***

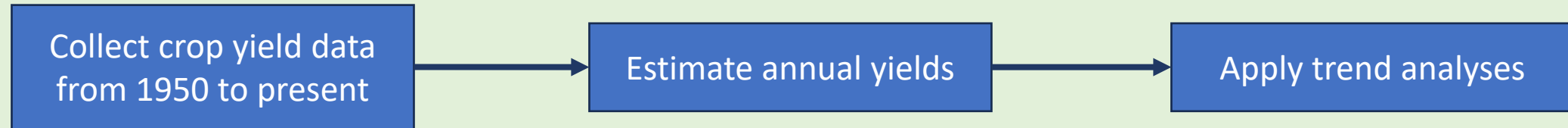


# Crop Yields

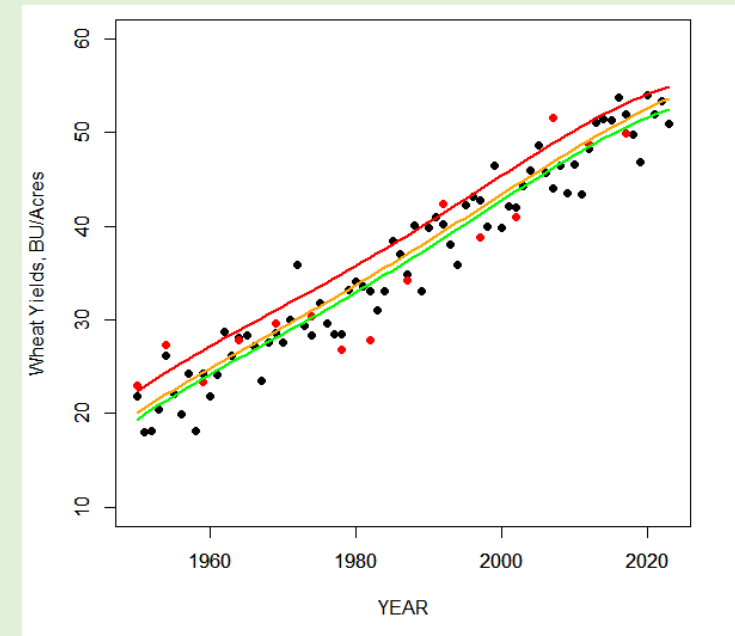
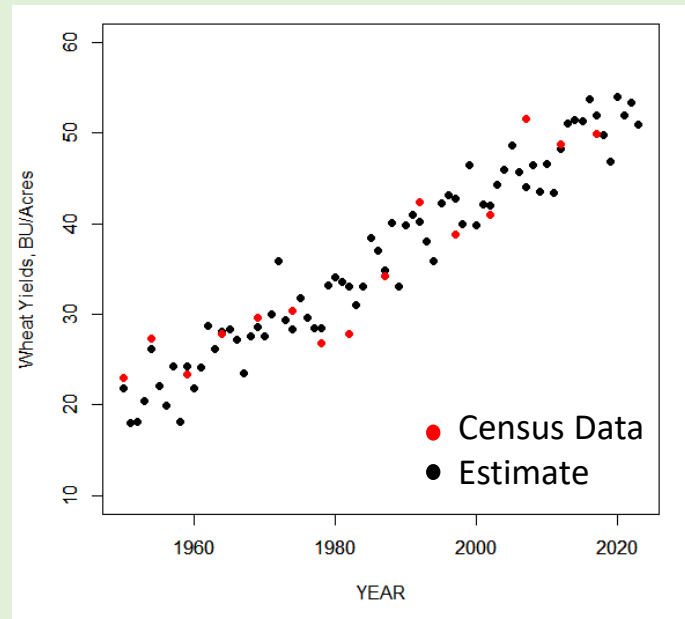
# Path of investigation

## Goals:

- Estimate farmer yield expectations at the county level which drive the application of nutrients.
- Estimate various yield trends to support potential scenarios.

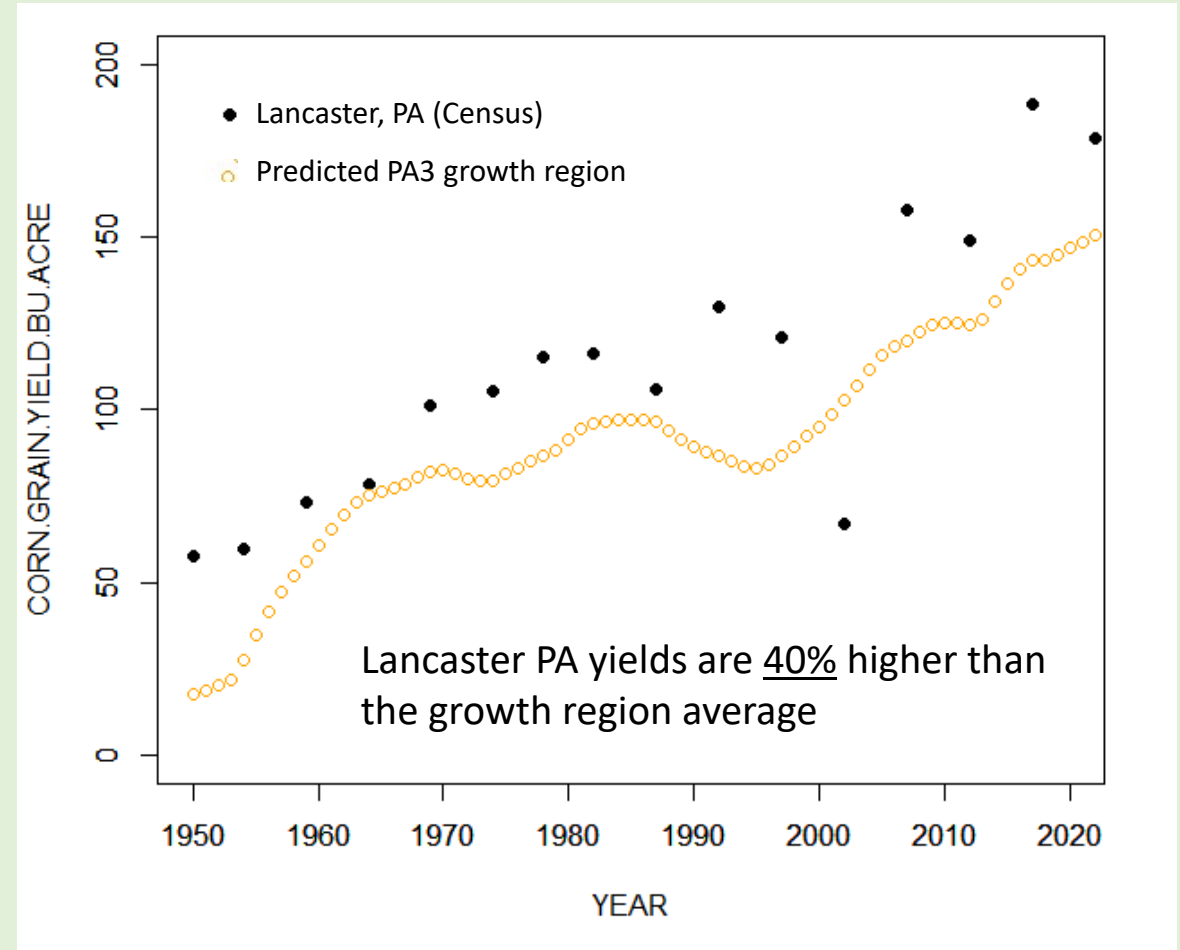


USDA Census and Survey data



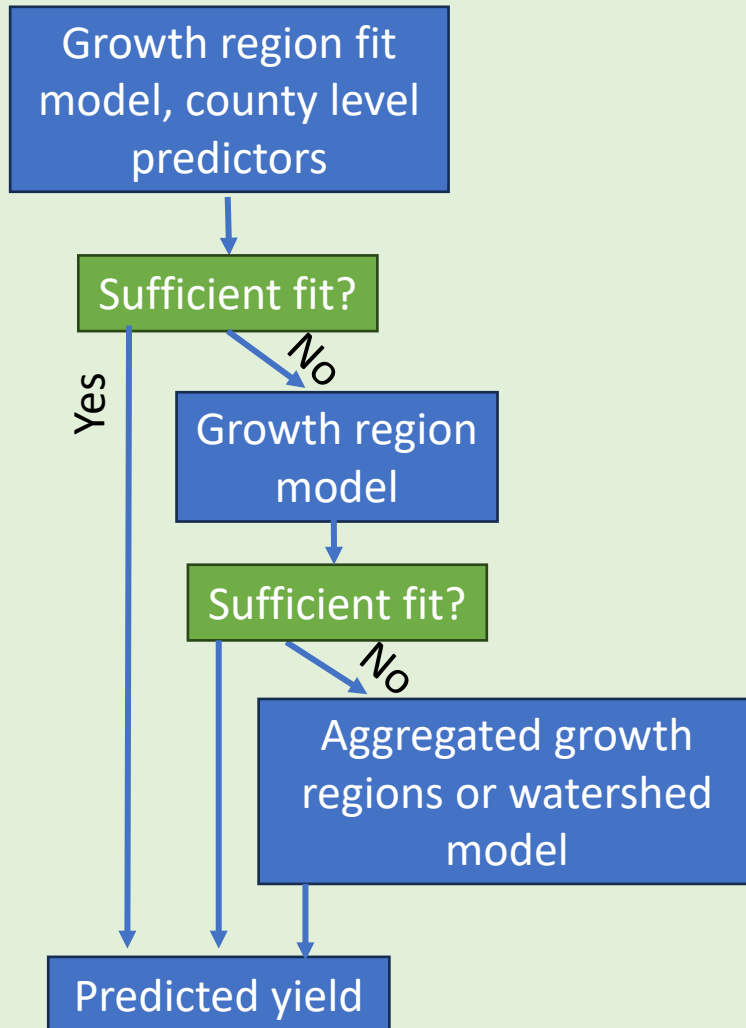
# Continued improvements

- Aggregating to the growth region was done to improve data quality over the largest number of counties and crops where data at the individual county can be unreliable.
- HOWEVER, this has resulted in predicted yields which are (much) too low for counties which have high yields relative to their growth region.
- Because counties with high relative yields are also likely to have more acres this issue skews the watershed wide demand for N application down as well.

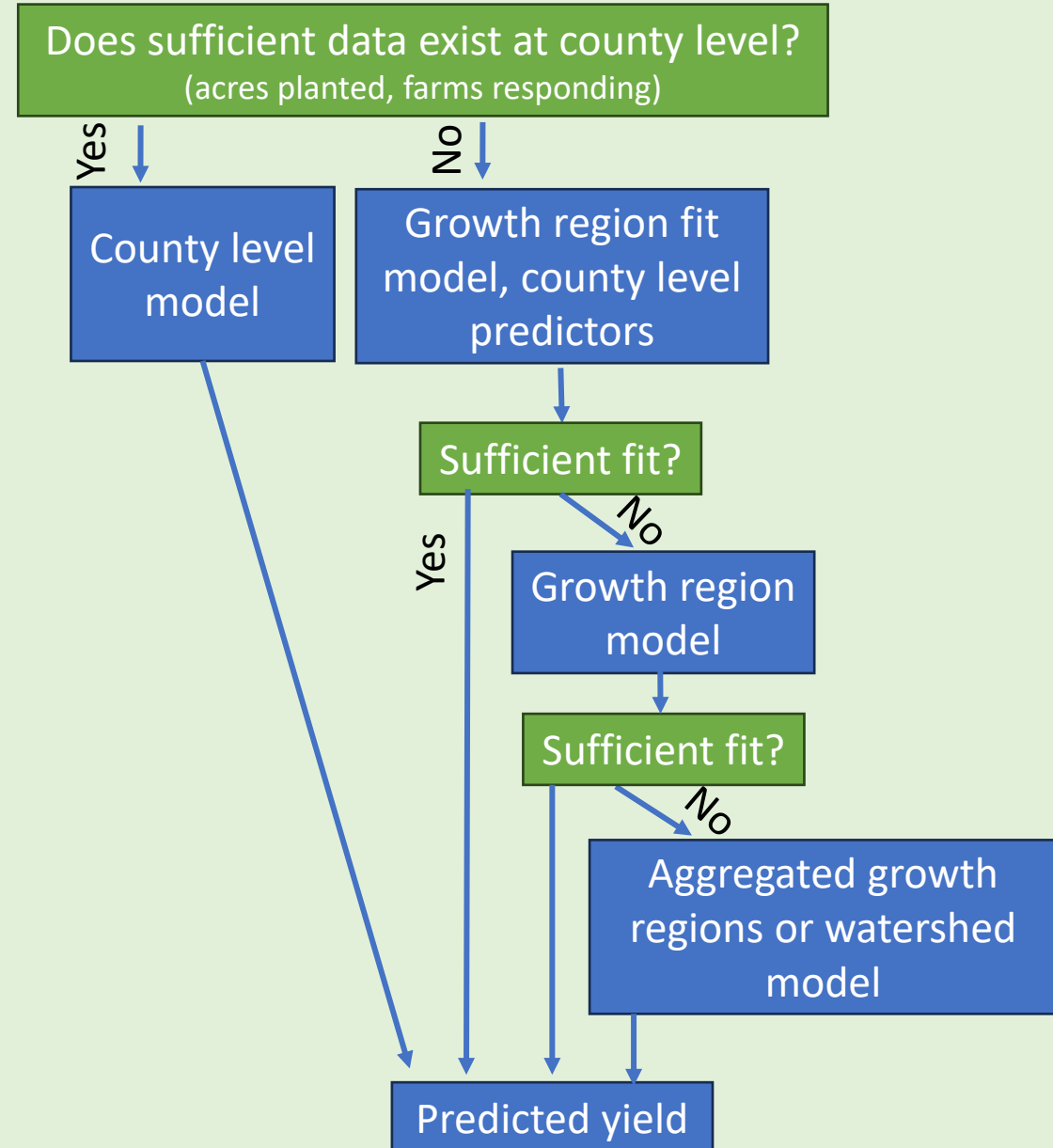


# Solution

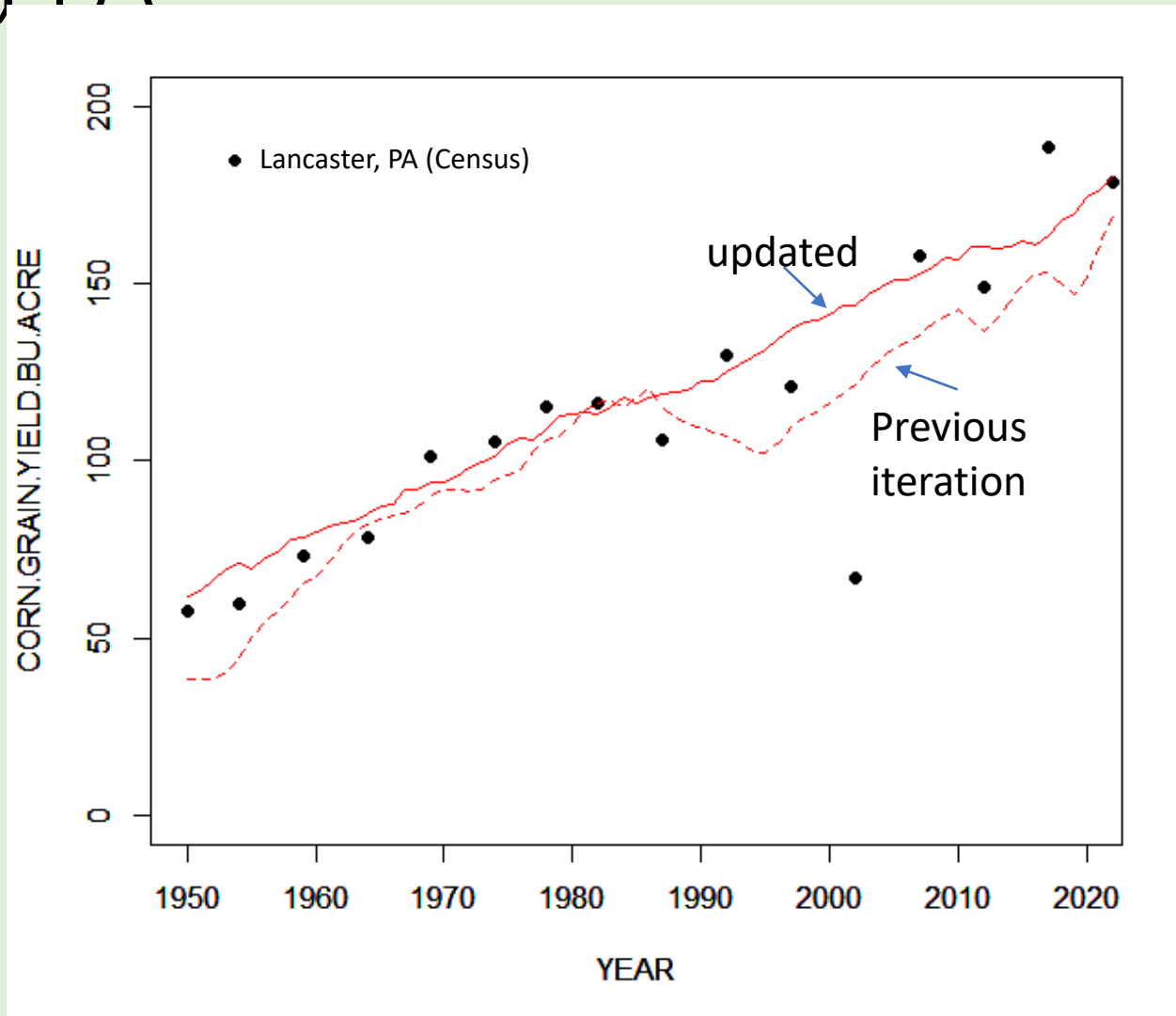
Joseph's current method



Joseph's proposed solution

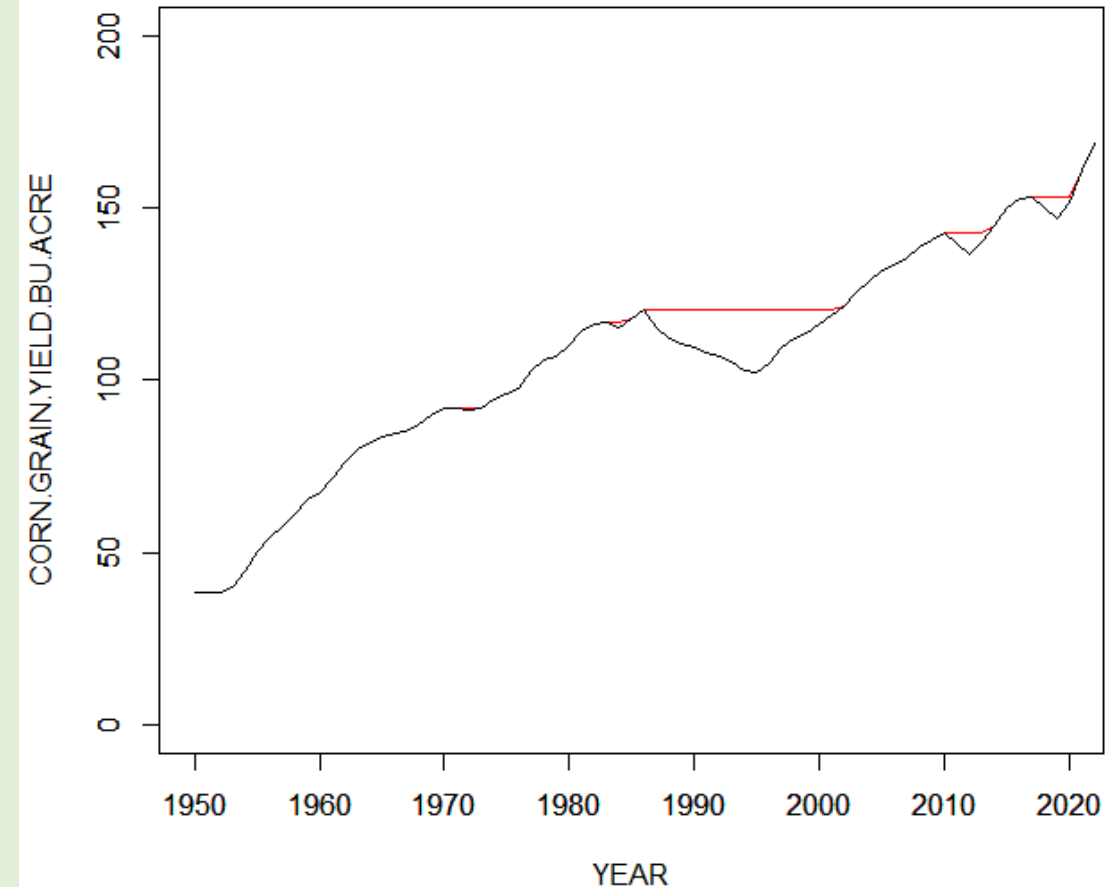


# Preliminary results of proposed solution for Lancaster, PA



# Expected yields must not go down (for some crops)

- The expected yield for large crops (e.g., Corn, Soybeans) with historically positive trends does not likely decrease
  - This has not been applied in the results shown, but will be applied to select crops based on watershed trend in next revision



# Progress with a subset of crops:

- alfalfa hay
- barley for grain
- corn for silage or greenchop
- sorghum for grain
- soybeans for beans
- wheat for grain
- soybeans for beans
- corn for grain
- sorghum for grain
- corn for grain
- sorghum for grain

# Crop Yields

Proposed decisions:

***Should this new statistical framework be used to determine long term crop yield trends?***



# Industry Data

# Commercial Agricultural Production Data

**Poultry Litter  
Subcommittee  
(PLS) – (2011-  
2014)**

**Manure  
Treatment  
Technology  
Expert Panel  
Report - 2016**

**Penn State  
University/Virginia  
Tech Swine  
Manure Nutrient  
Generation  
Research Project –  
2016**

**Agricultural  
Modeling  
Subcommittee  
(AMS) – 2015**

**Virginia Tech  
Turkey Litter  
Manure Nutrient  
Generation  
Research Project  
– 2016**

**University of  
Maryland/CBPO  
Commercial Layer  
Production  
Research – 2021**

# Calculating manure nutrients



# Poultry Industry Input



- Weights
- Numbers

- Manure/litter generation

- Nutrient content

# Industry Data

## Proposed decisions:

***Should new data sources from the poultry industry be incorporated into nutrients calculations in CAST?***

Questions?

A blue semi-circular graphic on the left side of the slide, composed of two concentric semi-circles. The outer semi-circle is a solid blue color, and the inner semi-circle is a slightly lighter shade of blue, creating a layered effect.

Thank you for attending  
office hours!

We will begin our main  
meeting at 09:00.