

# NRCS-EPA Federal Coordination Teams

To enhance coordination and communication of agricultural  
practice and WQ monitoring activities and funding in the  
Chesapeake Bay Watershed



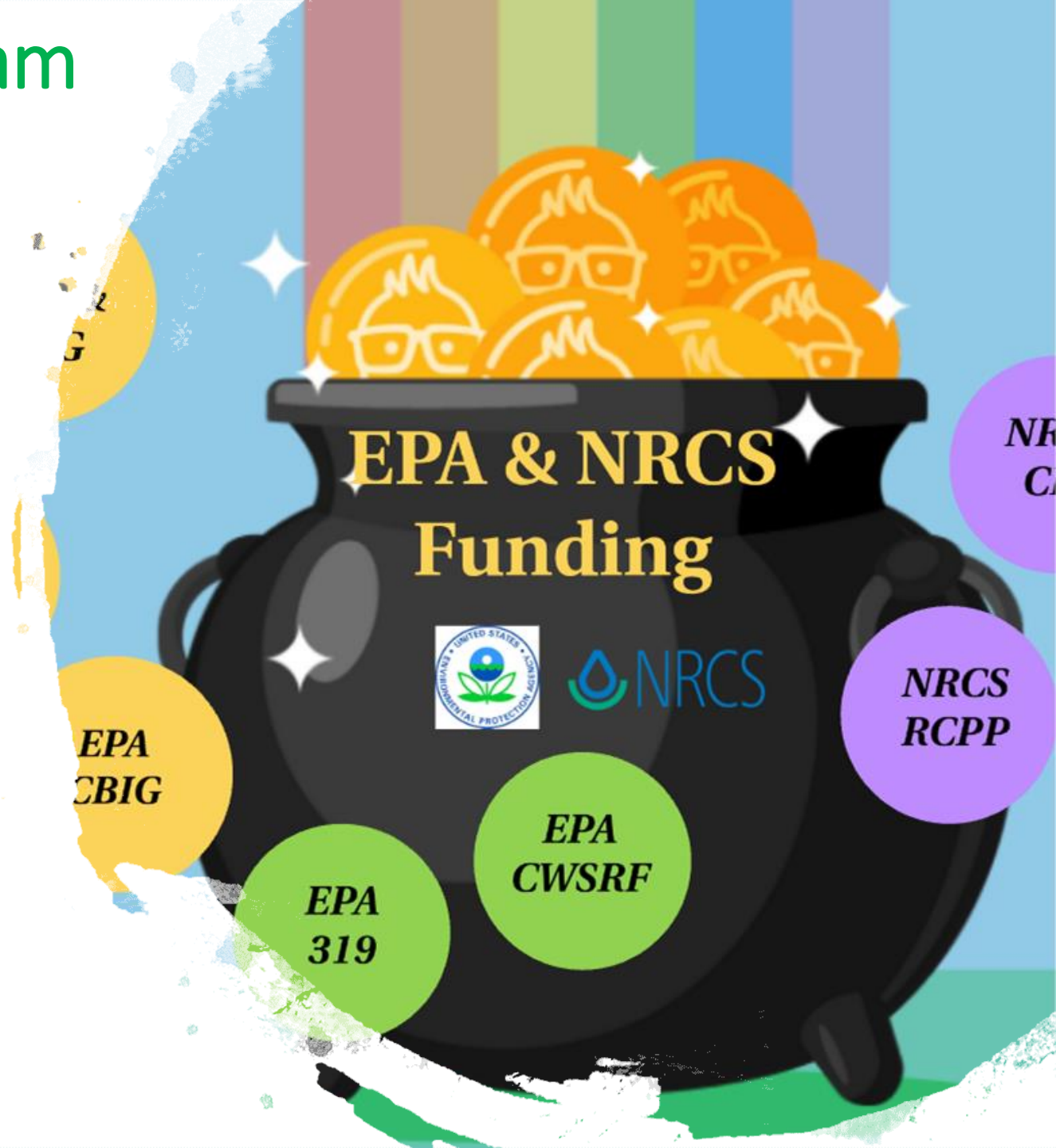
# NRCS-EPA Ag Conservation Funding Team



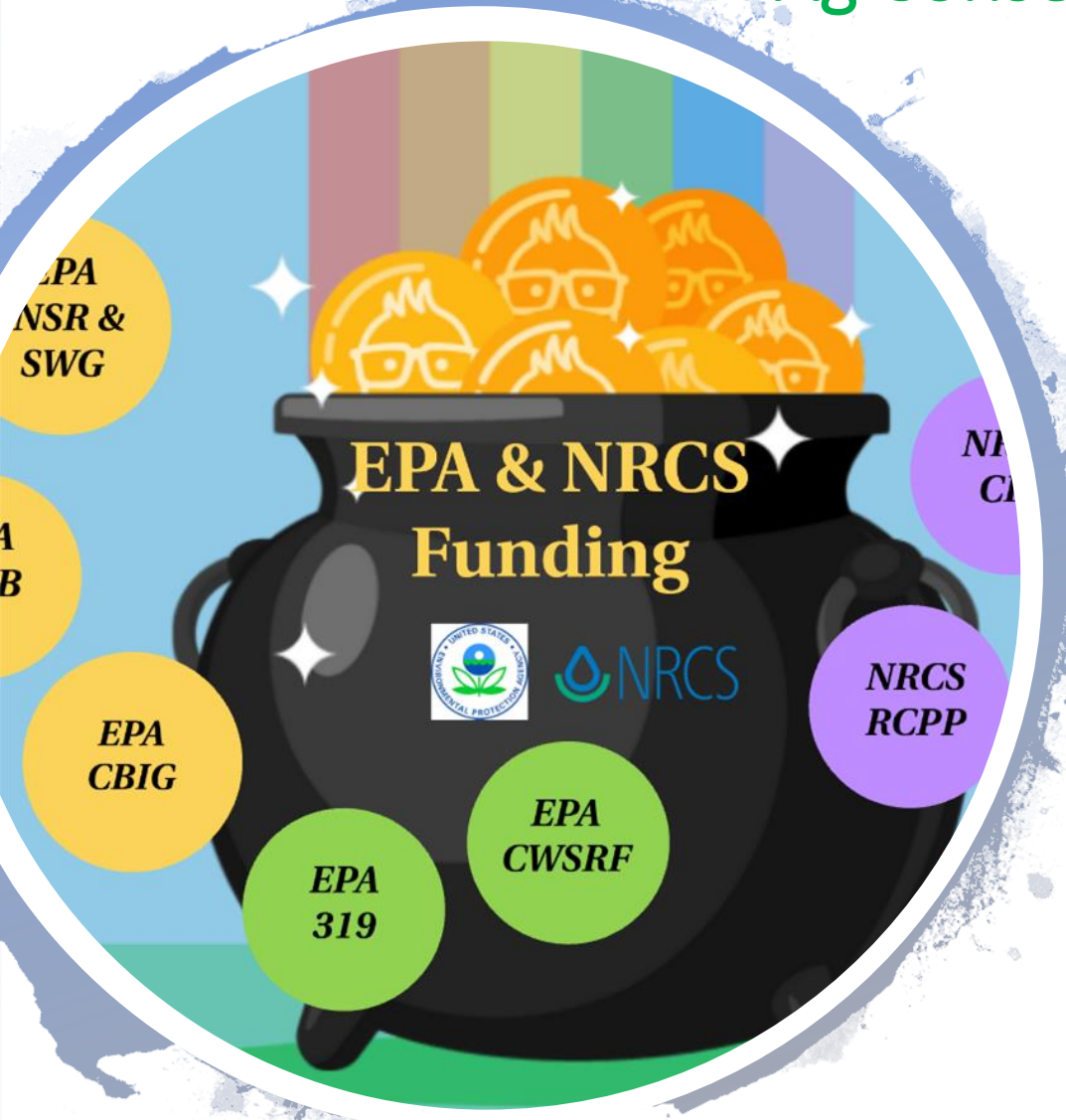
- Enhance ag conservation funding efforts.
- Ensure no unnecessary duplication of efforts.

# Ag Conservation Funding Team Analysis and Products

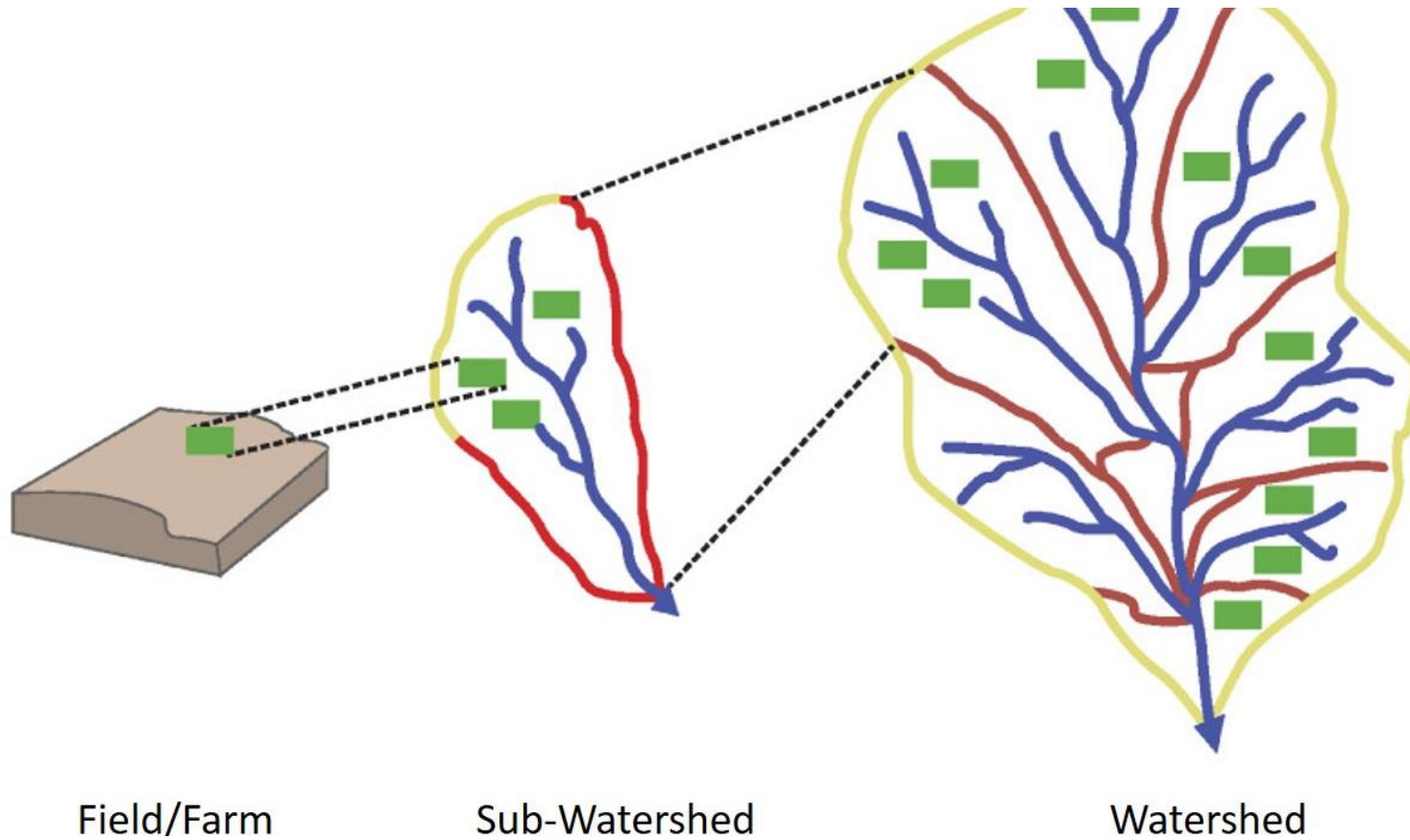
- Review of Funding Programs
- Comparative Analysis of Program Elements
  - Funding levels
  - Timing of solicitation
  - Priorities – geographic, practices
  - Match requirements
- Inventory of Projects Funded
- Analysis of Safeguards in Place to Avoid Duplication
- List of Successful Approaches to EPA-NRCS Funding Coordination



# Ag Conservation Funding Team - Recommendations



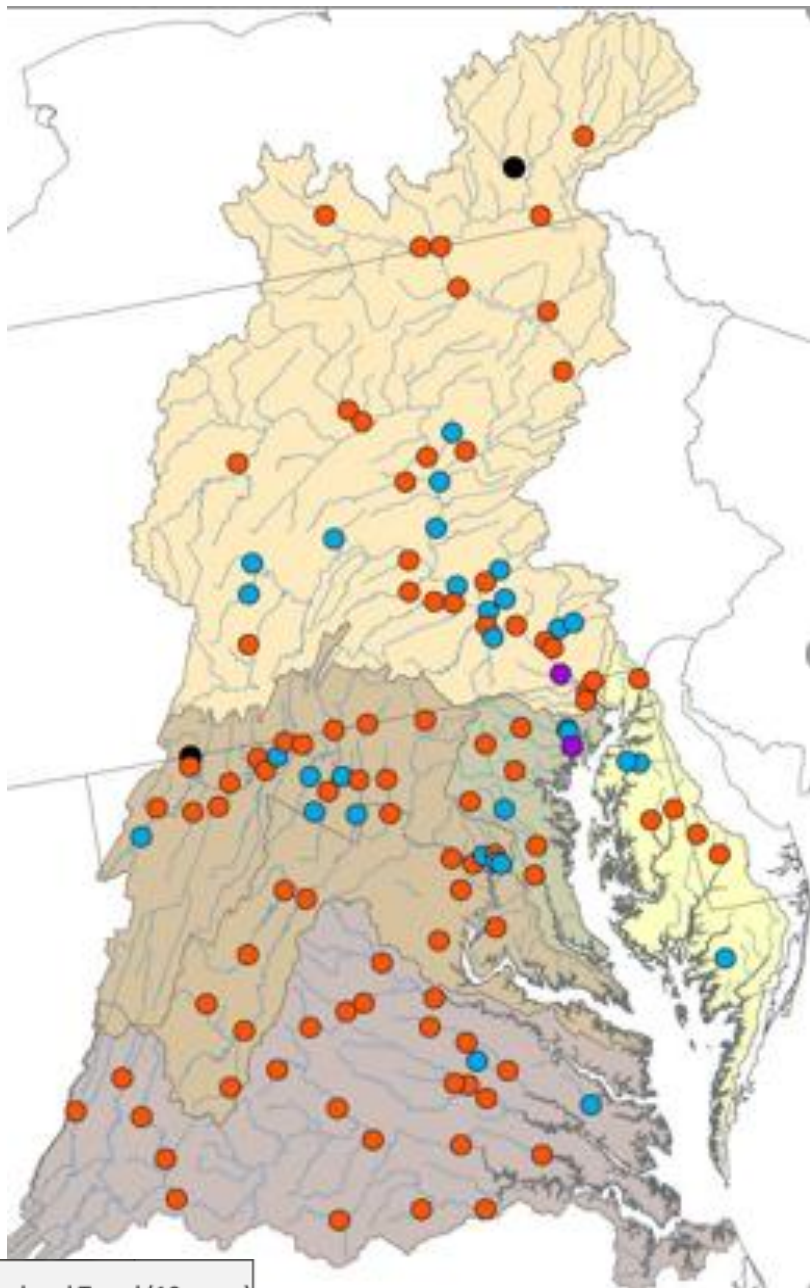
- Coordination Meetings – quarterly
- Joint “Match” Memo – EPA CB Grants/RCPP
- Ag Practice Standards
- CWSRF/EQIP Coordination – Outreach
- Source Water Protection
  - Data sharing – inform SWP area selections, priority practices, ranking criteria
  - Planning – EPA & SW Collaboratives support for Area-Wide Plans
  - Education & Outreach on SWP Funding Opportunities (CWSRF, Local Working Groups)
- Duplication of Payments
- Diversity – Historically Under-Served Farmers



## NRCS-EPA-USGS WQ Monitoring Team

- Further coordinate water-quality monitoring, interpretation, and funding
- To assess the impact of agricultural conservation practice implementation on the quality of local streams, rivers, and the tidal Chesapeake Bay.

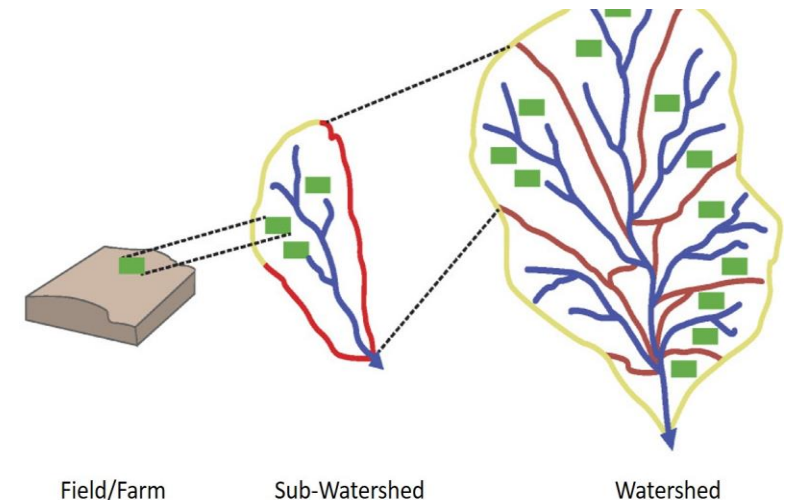
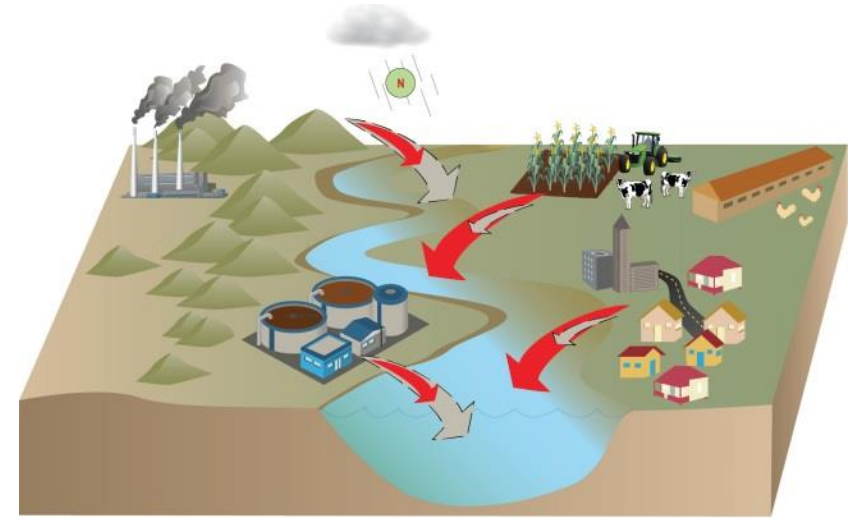
# WQ Monitoring Team Analysis & Findings



- **Review of monitoring and analysis activities** (R3 and US)
- **Findings:**
  - Strong CB Non-Tidal Monitoring Network + Others.
  - On-line tools to compile WQ Data. (How's my Watershed)
  - Studies to assess impacts of practices on WQ.
- **Challenge:** Need enhanced monitoring at finer scale to connect practices with WQ changes.

# WQ Monitoring Team Recommendations

- Identify Watersheds with greatest needs and opportunities for monitoring impacts of practices on WQ.
  - Develop criteria for selecting watersheds (extent of practices, monitoring)
  - Chose watersheds in each state
- Identify Opportunities to further coordinate WQ monitoring programs and interpretation of results.
  - Evaluate data & current interpretation, identify gaps, enhance monitoring and interpretation (may take additional resources)
- Improve Communication to engage decision makers.





# Next Steps - Proposed

- Senior Executive Briefing – enthusiastically concurred.
- Developing a timeline for implementation of approved recommendations.
- Local Workshops Team – Planning virtual workshop to seek feedback from ag community.





**Chesapeake Bay Program**  
*Science. Restoration. Partnership.*



## Engagement with CBP Ag Workgroup

- Participate in Local Workshop(s)
- Provide input on barriers and opportunities to coordinate funding.
- Identify monitored watersheds to consider for enhancements