

High-res Land Use Data to inform CAST

Peter R. Claggett¹, Labeeb Ahmed¹, Jacob Czawlytco², Sean MacFaden³, Sarah McDonald¹, Jarlath O'Neil-Dunne³, and Rachel Soobitsky²

¹ Presenting Author, Lower Mississippi-Gulf Water Science Center, U.S. Geological Survey, Annapolis, MD 21403

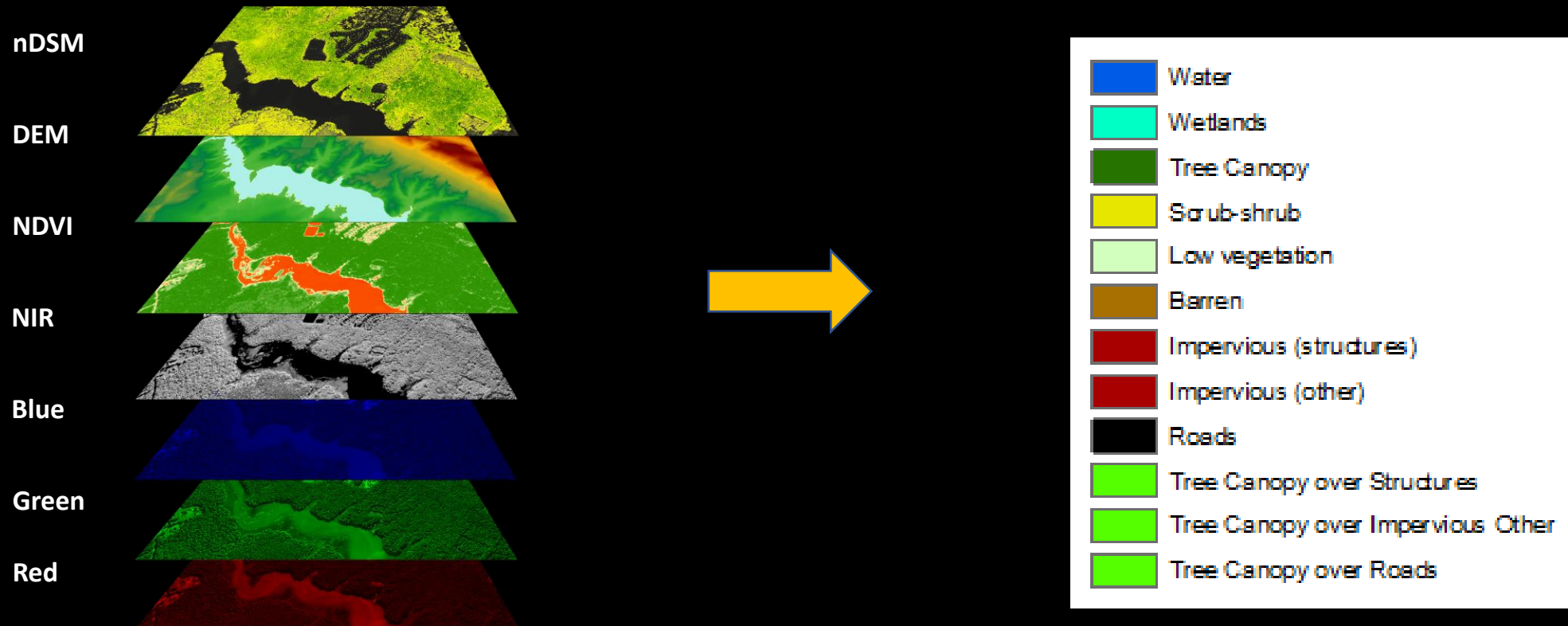
² Chesapeake Conservancy, Annapolis, MD 21403

³ University of Vermont Spatial Analysis Laboratory, Burlington, VT 05405

⁴ University of Maryland, Baltimore County, Baltimore, MD 21250

**Agriculture and Land Use Workgroup Meetings
May 20, 2021**

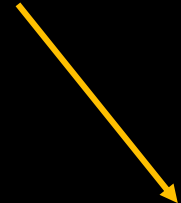
CBP Land Cover Classification (12 classes)



Ancillary Data



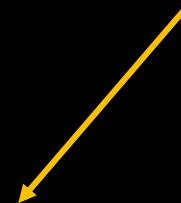
- County Land Use
- Abandoned Mine Lands
- Landfills
- Roads



Land Cover Data



- Impervious surfaces
- Tree canopy
- Low vegetation
- Water



Land Use Data

- Impervious-Roads
- Forests
- Turf Grass
- Cropland

New Land Use Products in Review

Draft 2017 Land Cover:

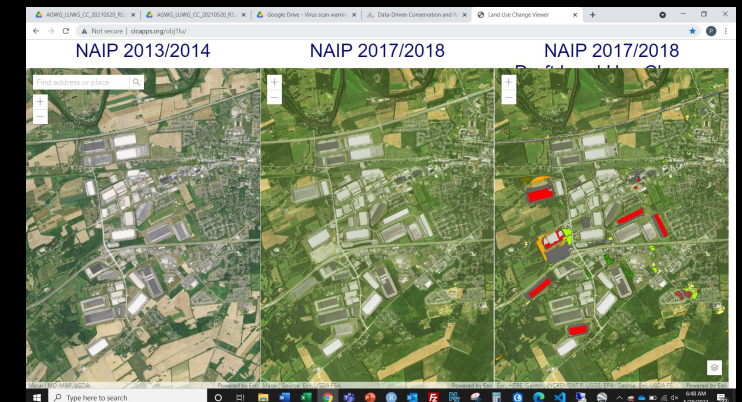
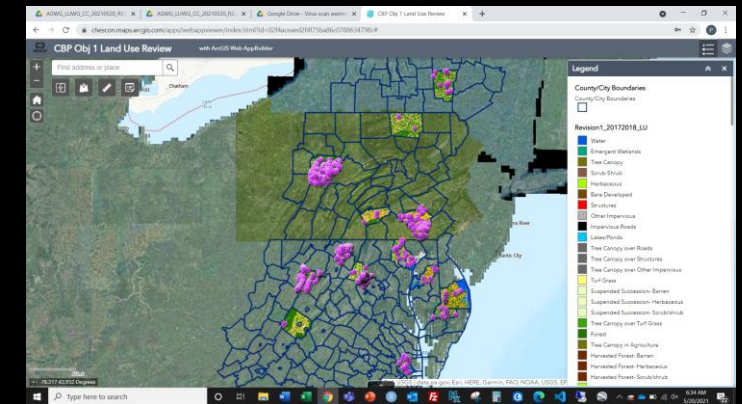
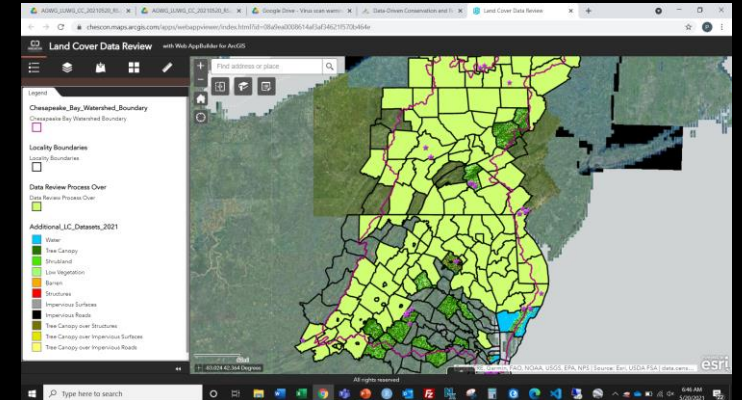
- Reviewed in February – June 2021
- Sent directly to County agencies

Draft 2017 Land Use:

- Reviewed in April – mid-May 2021
- Available online

Draft 2013 - 2017 Land Use Change:

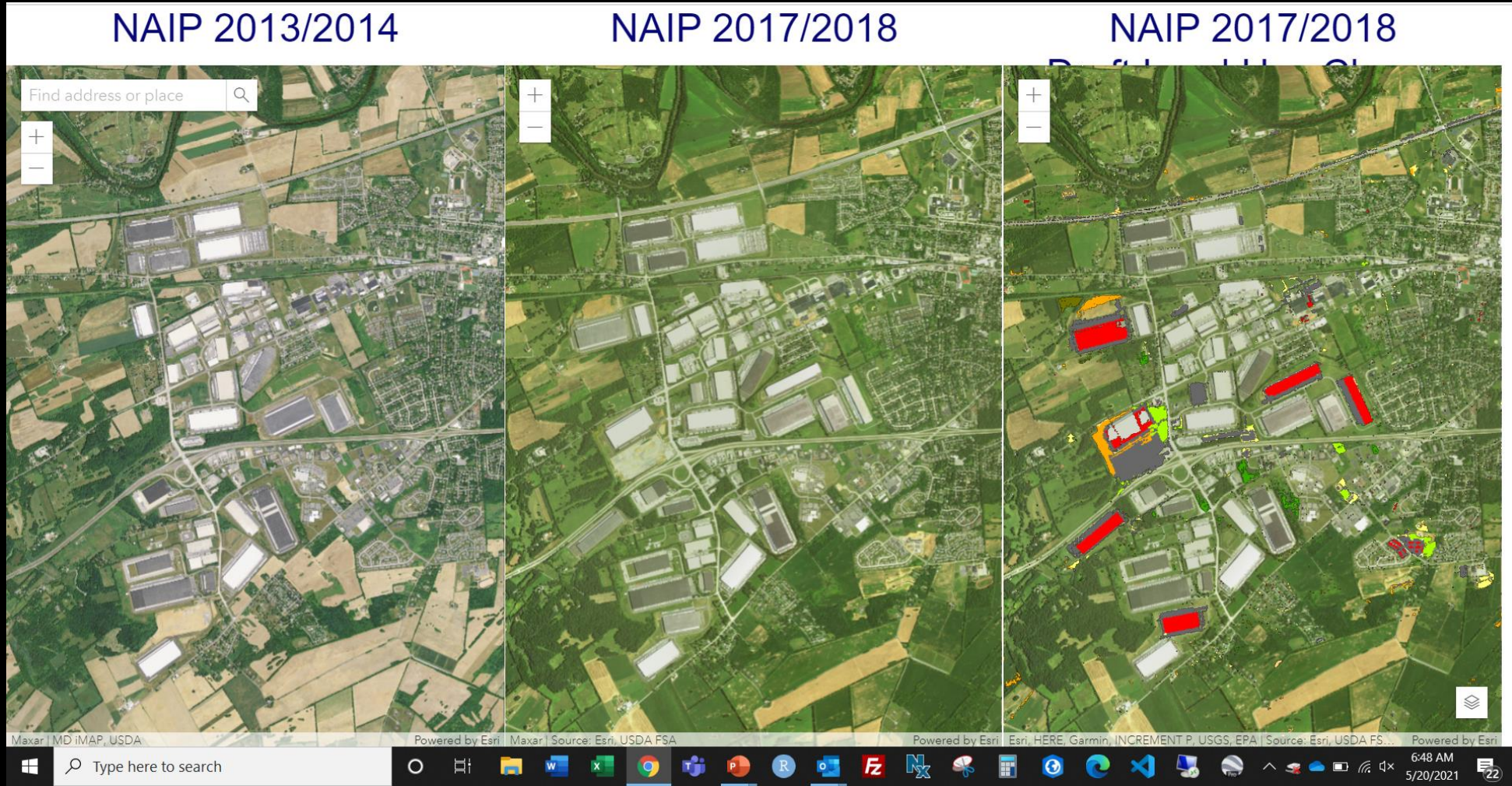
- Based on draft land cover change product
- Unrelated to original 2013 land use in CAST
- Reviewed in mid-May 2021
- Available online



Land Use Data for CAST-21

Version 1 2013 - 2017 Land Use Change:

- Most issues/errors identified in review fixed
- Due June 30th

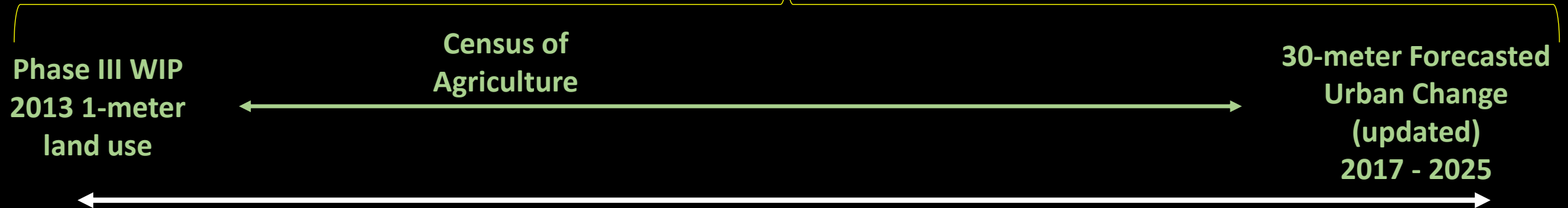


CAST-19

CBPO-estimated annual Feeding
Space and Double Crop acres

+

State-reported annual
Construction &
Timber harvest acres



2013

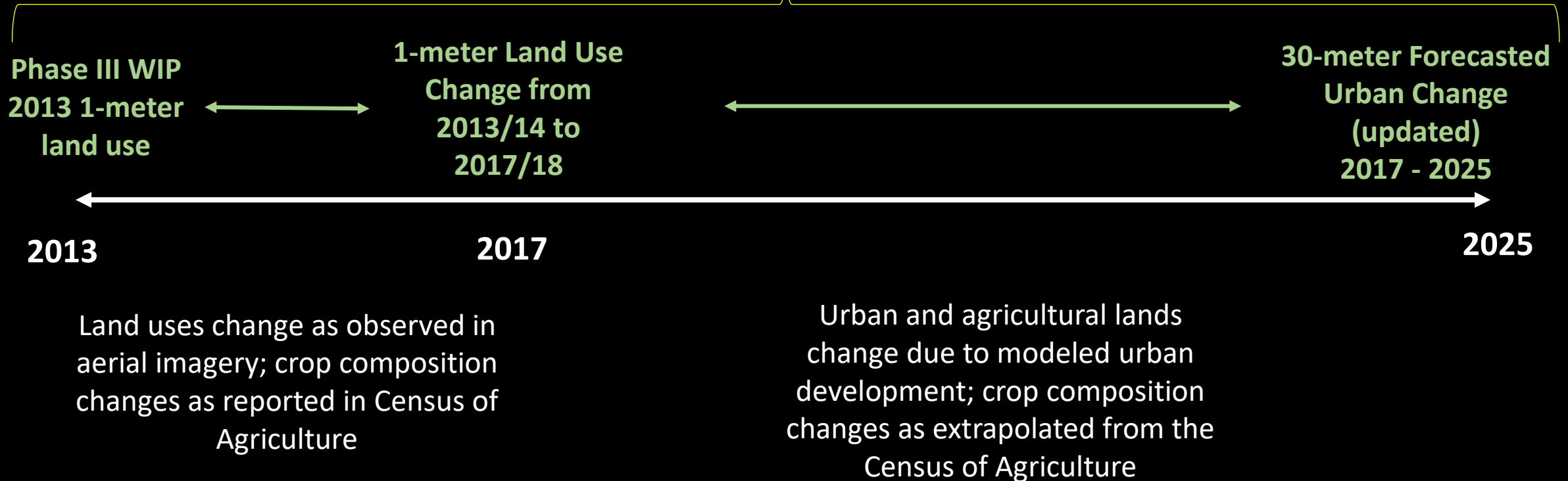
2017

2025

Urban land interpolated between
2013 and 2025, Agricultural land
trends and crop composition
determined by the Census of
Agriculture.

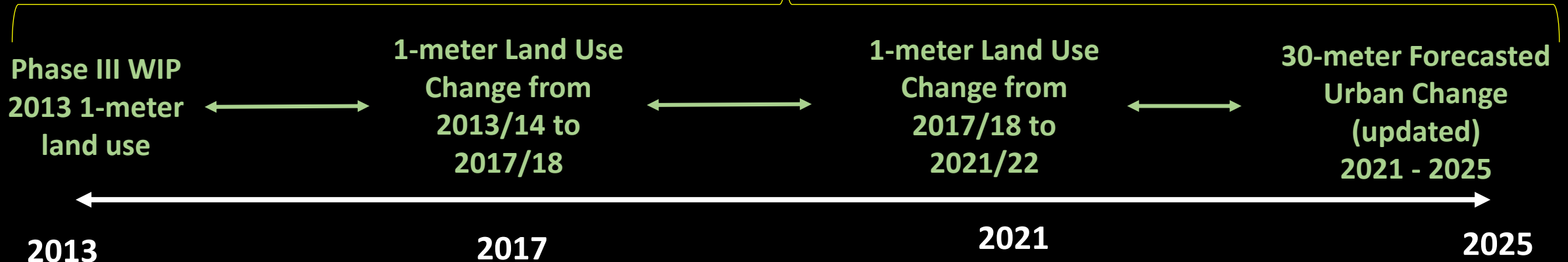
CAST-21

CBPO-estimated annual Feeding
Space and Double Crop acres
+
State-reported annual
Construction &
Timber harvest acres



CAST-23

CBPO-estimated annual Feeding
Space and Double Crop acres
+
State-reported annual
Construction &
Timber harvest acres



Land uses change as observed in
aerial imagery; crop composition
changes as reported in Census of
Agriculture

Urban and agricultural lands
change due to modeled urban
development; crop composition
changes as extrapolated from the
Census of Agriculture

Review of Land Use Change in the 14 Prototype Counties: 2013/14 – 2017/18

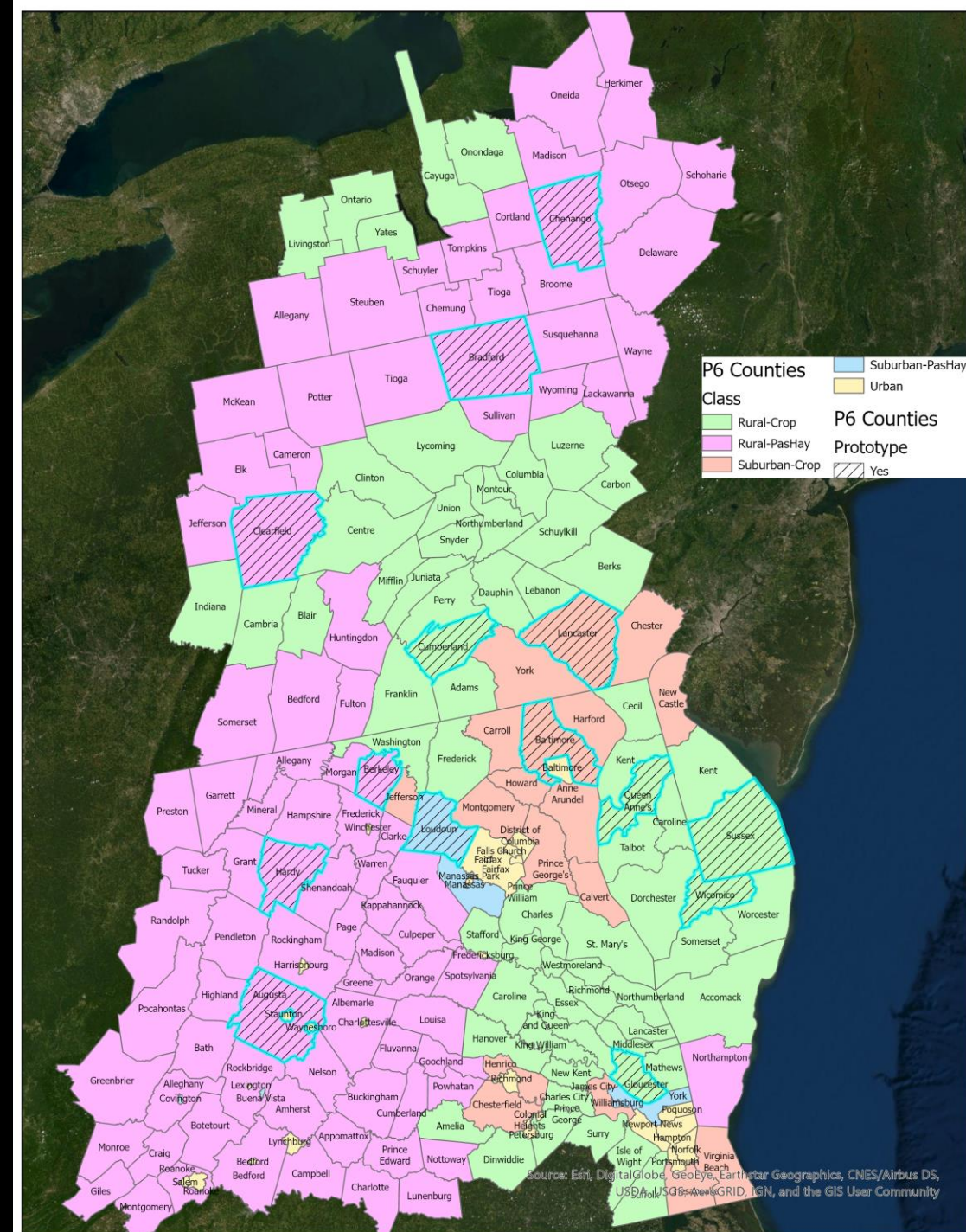
- These slides present initial tabular data for draft land use change from 2013/14 to 2017/18 that are proposed for use in CAST-21.
- Units are in acres!
- Focus your review on whether the magnitude and types of the land conversion (e.g., from cropland to forest, forest to development, etc.) make sense based on your knowledge of the prototype counties or the knowledge of others who are familiar with land use trends in these counties.
- You can also visualize the changes that these tables are based on at the following site:
<http://cicapps.org/obj1lu/>

Notes and Caveats

- You are reviewing a draft land use change data product.
- The land use change data will be revised based on both internal review by the U.S. Geological Survey and Chesapeake Conservancy and external review by CBP Partners and stakeholders.
- All changes will be incorporated in a draft final land use change product to be produced by the end of June. Revised visual and tabular data will then be posted on the land use change viewer, <http://cicapps.org/obj1lu/>, for all counties as the data are produced through the month of June.

Land Use Change in the 14 Prototype Counties: 2013/14 – 2017/18

FIPS	CNTY_NAME	P_Crop	P_Dev	Class
10005	SUSSEX	97.4%	18.8%	Rural-Crop
24005	BALTIMORE	66.7%	38.6%	Suburban-Crop
24035	QUEEN ANNES	96.3%	14.2%	Rural-Crop
24045	WICOMICO	94.5%	20.6%	Rural-Crop
36017	CHENANGO	28.3%	5.8%	Rural-PasHay
42015	BRADFORD	39.2%	5.7%	Rural-PasHay
42033	CLEARFIELD	42.0%	8.1%	Rural-PasHay
42041	CUMBERLAND	65.8%	24.6%	Rural-Crop
42071	LANCASTER	68.2%	29.2%	Suburban-Crop
51015	AUGUSTA	27.1%	9.3%	Rural-PasHay
51073	GLOUCESTER	85.1%	12.6%	Rural-Crop
51107	LOUDOUN	33.1%	27.7%	Suburban-PasHay
54003	BERKELEY	33.1%	23.8%	Rural-PasHay
54031	HARDY	22.2%	6.4%	Rural-PasHay



Land Use Change in the 14 Prototype Counties: 2013/14 – 2017/18

- Land use change code establishes rules to translate land cover change (2013 – 2017) derived from spectral data into land use change. The rules integrate the 2017 land use, parcels, and landscape context information with land cover change data.
- Adjusting these rules/code for one county alters conditions in all other counties. To make this effort manageable, a representative sample of the ~200 Chesapeake Bay watershed counties was needed to develop and refine the rules and to manage the CBP Partner review.
- Prototype counties were chosen by the LUWG to be representative of all states, physiographic provinces, levels of urbanization, and diversity of agricultural practices.

FIPS	CNTY_NAME	P_Crop	P_Dev	Class
10005	SUSSEX	97.4%	18.8%	Rural-Crop
24005	BALTIMORE	66.7%	38.6%	Suburban-Crop
24035	QUEEN ANNES	96.3%	14.2%	Rural-Crop
24045	WICOMICO	94.5%	20.6%	Rural-Crop
36017	CHENANGO	28.3%	5.8%	Rural-PasHay
42015	BRADFORD	39.2%	5.7%	Rural-PasHay
42033	CLEARFIELD	42.0%	8.1%	Rural-PasHay
42041	CUMBERLAND	65.8%	24.6%	Rural-Crop
42071	LANCASTER	68.2%	29.2%	Suburban-Crop
51015	AUGUSTA	27.1%	9.3%	Rural-PasHay
51073	GLOUCESTER	85.1%	12.6%	Rural-Crop
51107	LOUDOUN	33.1%	27.7%	Suburban-PasHay
54003	BERKELEY	33.1%	23.8%	Rural-PasHay
54031	HARDY	22.2%	6.4%	Rural-PasHay

Phase 6 Land Use/Cover Classes

1. Impervious Roads

- 2.1 Impervious
 - 2.1.1 Roads

2. Impervious Non-Roads

- 2.1 Impervious
 - 2.1.2 Structures
 - 2.1.3 Other Impervious
- 4.2 Solar fields
 - 4.2.1 Impervious

3. Tree Canopy Over Impervious

- 2.1 Impervious
 - 2.1.4 Tree Canopy over Impervious

4. Turf Grass

- 2.2 Pervious, Developed
 - 2.2.1 Turf Grass

5. Tree Canopy over Turf Grass

- 2.2 Pervious, Developed
 - 2.2.4 Tree Canopy over Turf Grass

6. Forest

- 3.1 Forest (≥ 1 acre, 240-ft width)
- 3.2 Tree Canopy in Agriculture

7. Wetlands, Floodplain

- 5.2 Riverine, Wetlands

8. Wetlands, Other

- 5.3 Terrene/Isolated, Wetlands

9. Wetlands, Tidal

- 5.1 Tidal, Wetlands

10. Mixed Open

- 2.2 Pervious, Developed
 - 2.2.2 Bare Developed
 - 2.2.3 Suspended Succession
- 3.3 Harvested Forest (≤ 3 years)
- 3.4 Natural Succession (> 3 years)
- 4.2 Solar fields
 - 4.2.2 Pervious
- 4.3 Extractive (active mines)
- 5.4 Bare shore, Water Margins

11. Cropland

- 4.1 Agriculture
 - 4.1.1 Cropland
 - 4.1.3 Orchard/vineyard

12. Pasture

- 4.1 Agriculture
 - 4.1.2 Pasture

13. Water

- 1.1 Lentic
 - 1.1.1 Estuary (tidal)
 - 1.1.2 Lakes & Ponds
- 1.2 Lotic
 - 1.2.1 Streams

**Change among these classes
is irrelevant to CAST!**

How to Interpret Land Use Change Tables: 2013/14 – 2017/18

Draft and revised (Version 0.9) Gain and Loss Tables: e.g., in Augusta County, Virginia, 69 acres of cropland in 2013/14 were converted to non-cropland in 2017/18 and 218 acres of non-cropland in 2013/14 were converted into cropland in 2017/18, yielding a net increase of 149 cropland acres.

DRAFT		CRP	FOR	INR	IR	MO	PAS	TCI	TCT	TG	WAT
Augusta	LOSS	70	1,715	152	17	2,764	126	74	441	237	1
	GAIN	279	469	596	3	1,286	1,558	50	346	1,002	6
	NET	210	(1,246)	444	(13)	(1,477)	1,432	(24)	(95)	765	5
Version 0.9		CRP	FOR	INR	IR	MO	PAS	TCI	TCT	TG	WAT
Augusta	LOSS	69	1,538	151	17	1,211	125	73	492	225	1
	GAIN	218	435	591	3	1,276	380	49	308	742	0
	NET	149	(1,203)	439	(13)	65	255	(24)	(184)	517	(1)

County CrossTab Tables: e.g., of the 69 acres of cropland in 2013/14 that were converted to non-cropland in 2017/18, 41 acres to impervious surfaces, 25 acres were converted to forest, and 3 acres to other uses. Of the 218 acres of non-cropland that transitioned to cropland, 8 acres from impervious surfaces, 23 acres from tree canopy over turf grass, and 184 were converted from forest, etc.

T1-T2 LU	Impervious Roads	Impervious Non-Roads	Tree Canopy Over Impervious	Turf Grass	Tree Canopy over Turf Grass	Forest	Wetlands, Floodplain	Wetlands, Other	Wetlands, Tidal	Mixed Open	Cropland	Pasture	Water	Loss
Impervious Roads	-	-	16.08	-	0.48	0.04	-	-	-	-	-	-	-	16.60
Impervious Non-Roads	2.38	-	33.08	39.21	2.99	0.58	-	0.10	-	35.15	7.93	29.85	0.01	151.30
Tree Canopy Over Impervious	0.00	44.45	-	8.32	-	-	0.04	-	-	16.33	1.03	2.74	-	72.92
Turf Grass	0.01	21.98	0.00	-	199.90	0.77	-	-	-	2.16	-	0.13	-	224.95
Tree Canopy over Turf Grass	-	96.57	-	106.42	-	0.00	-	-	-	210.38	23.44	55.56	-	492.38
Forest	-	64.92	-	116.09	0.02	-	-	-	-	1,010.96	183.67	262.35	0.00	1,638.01
Wetlands, Floodplain	-	-	-	-	-	-	-	-	-	-	-	-	-	-
Wetlands, Other	-	-	-	-	-	-	-	-	-	-	-	-	-	-
Wetlands, Tidal	-	-	-	-	-	-	-	-	-	-	-	-	-	-
Mixed Open	0.94	240.02	0.16	468.91	101.92	369.17	-	-	-	-	1.24	28.91	0.00	1,211.27
Cropland	-	41.16	0.01	0.62	1.01	25.03	-	-	-	0.89	-	0.36	-	69.09
Pasture	-	81.59	0.03	2.39	1.23	39.49	-	-	-	0.36	0.30	-	-	125.38
Water	-	-	0.01	-	0.93	0.26	-	-	-	-	-	-	-	1.20
Gain	3.33	590.69	49.37	741.96	308.48	435.35	0.04	0.10	-	1,276.23	217.62	379.91	0.01	4,003.09

Augusta County, Virginia: 2013/14 – 2017/18

DRAFT		CRP	FOR	INR	IR	MO	PAS	TCI	TCT	TG	WAT
Augusta	LOSS	70	1,715	152	17	2,764	126	74	441	237	1
	GAIN	279	469	596	3	1,286	1,558	50	346	1,002	6
	NET	210	(1,246)	444	(13)	(1,477)	1,432	(24)	(95)	765	5
Version 0.9		CRP	FOR	INR	IR	MO	PAS	TCI	TCT	TG	WAT
Augusta	LOSS	69	1,638	151	17	1,211	125	73	492	225	1
	GAIN	218	435	591	3	1,276	280	49	308	742	0
	NET	149	(1,203)	439	(13)	65	255	(24)	(184)	517	(1)

CRP = cropland
FOR = forest
INR = impervious non-road
IR = impervious road
MO = mixed open
PAS = pasture
TCI = tree canopy over impervious
TCT = tree canopy over turf grass
TG = turf gras
WAT = water

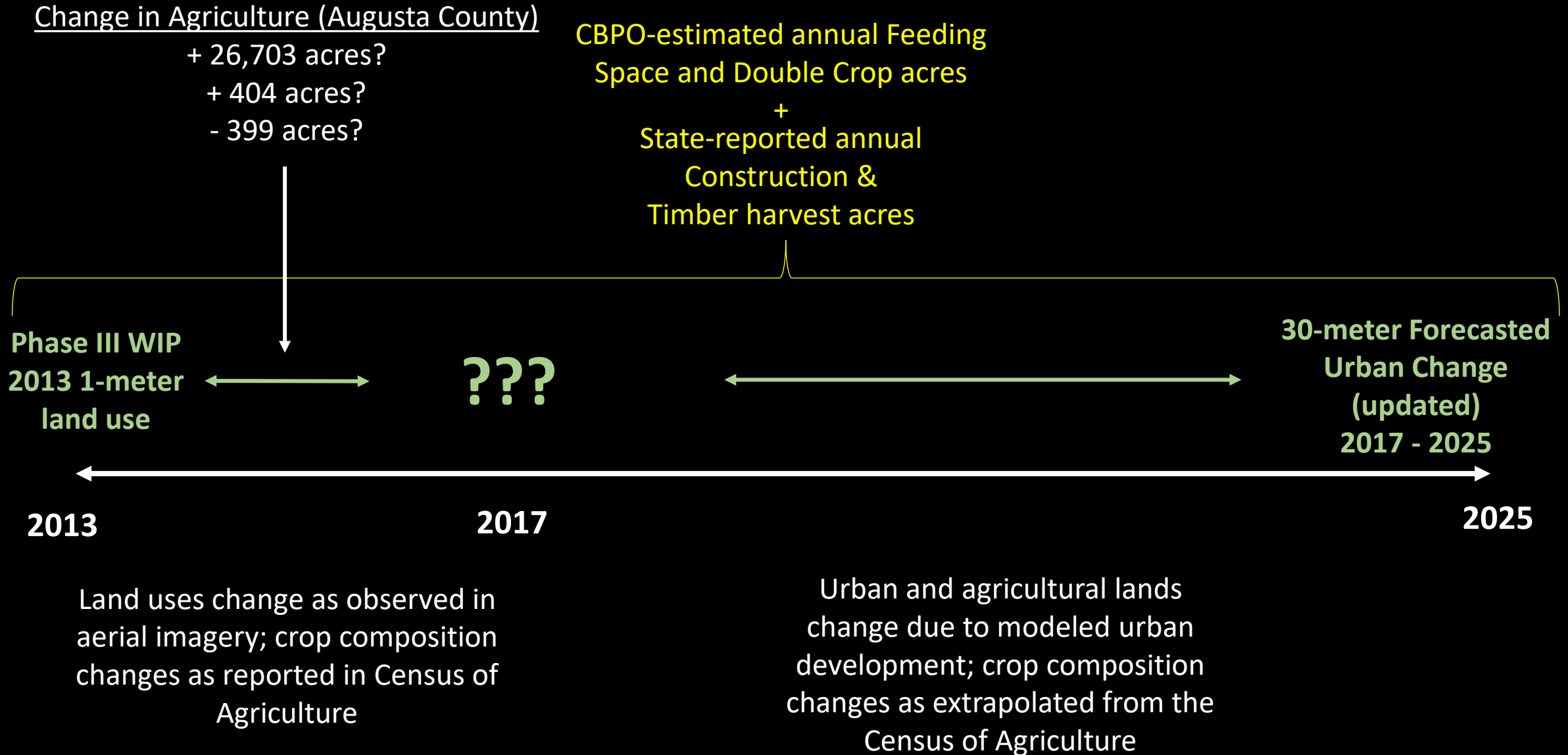
Observed Change in Agriculture, 2013-2017
Land Use Change: + 404 acres

Surveyed Change in Agriculture, 2012-2017,
Census of Agriculture: + 26,703

Modeled Change in Agriculture, 2013-2017,
Chesapeake Bay Land Change Model: -399

T1-T2 LU	Impervious Roads	Impervious Non-Roads	Tree Canopy Over Impervious	Turf Grass	Tree Canopy over Turf Grass	Forest	Wetlands, Floodplain	Wetlands, Other	Wetlands, Tidal	Mixed Open	Cropland	Pasture	Water	Loss
Impervious Roads	-	-	16.08	-	0.48	0.04	-	-	-	-	-	-	-	16.60
Impervious Non-Roads	2.38	-	33.08	39.21	2.99	0.58	-	0.10	-	35.15	7.93	29.85	0.01	151.30
Tree Canopy Over Impervious	0.00	44.45	-	8.32	-	-	0.04	-	-	16.33	1.03	2.74	-	72.92
Turf Grass	0.01	21.98	0.00	-	199.90	0.77	-	-	-	2.16	-	0.13	-	224.95
Tree Canopy over Turf Grass	-	96.57	-	106.42	-	0.00	-	-	-	210.38	23.44	55.56	-	492.38
Forest	-	64.92	-	116.09	0.02	-	-	-	-	1,010.96	183.67	262.35	0.00	1,638.01
Wetlands, Floodplain	-	-	-	-	-	-	-	-	-	-	-	-	-	-
Wetlands, Other	-	-	-	-	-	-	-	-	-	-	-	-	-	-
Wetlands, Tidal	-	-	-	-	-	-	-	-	-	-	-	-	-	-
Mixed Open	0.94	240.02	0.16	468.91	101.92	369.17	-	-	-	-	1.24	28.91	0.00	1,211.27
Cropland	-	41.16	0.01	0.62	1.01	25.03	-	-	-	0.89	-	0.36	-	69.09
Pasture	-	81.59	0.03	2.39	1.23	39.49	-	-	-	0.36	0.30	-	-	125.38
Water	-	-	0.01	-	0.93	0.26	-	-	-	-	-	-	-	1.20
Gain	3.33	590.69	49.37	741.96	308.48	435.35	0.04	0.10	-	1,276.23	217.62	379.91	0.01	4,003.09

CAST-21



Queen Anne's County, Maryland: 2013/14 – 2017/18

DRAFT		CRP	FOR	INR	IR	MO	PAS	TCI	TCT	TG	WAT
Queen Anne's	LOSS	489	394	29	3	1,212	95	15	135	328	1
	GAIN	446	667	637	64	78	101	13	175	517	2
	NET	(43)	273	609	61	(1,134)	5	(2)	41	189	1
Version 0.9		CRP	FOR	INR	IR	MO	PAS	TCI	TCT	TG	WAT
Queen Anne's	LOSS	483	244	33	3	1,198	96	11	169	131	1
	GAIN	259	664	511	51	20	22	14	175	650	2
	NET	(224)	420	478	48	(1,177)	(74)	3	6	519	1

Observed Change in Agriculture, 2013-2017
Land Use Change: - 298 acres

Surveyed Change in Agriculture, 2012-2017,
Census of Agriculture: + 5,323

Modeled Change in Agriculture, 2013-2017,
Chesapeake Bay Land Change Model: - 90

CRP = cropland
FOR = forest
INR = impervious non-road
IR = impervious road
MO = mixed open
PAS = pasture
TCI = tree canopy over impervious
TCT = tree canopy over turf grass
TG = turf grass
WAT = water

T1-T2 LU	Impervious Roads	Impervious Non-Roads	Tree Canopy Over Impervious	Turf Grass	Tree Canopy over Turf Grass	Forest	Wetlands, Floodplain	Wetlands, Other	Wetlands, Tidal	Mixed Open	Cropland	Pasture	Water	Loss
Impervious Roads	-	0.40	1.05	0.17	0.23	0.12	-	-	-	0.65	0.00	0.00	-	2.61
Impervious Non-Roads	6.82	-	8.52	6.71	1.85	0.49	0.04	0.01	0.01	1.06	5.31	1.67	0.82	33.31
Tree Canopy Over Impervious	0.23	2.45	-	5.44	0.21	0.22	0.03	0.00	0.00	1.47	0.68	0.43	-	11.15
Turf Grass	1.68	44.02	0.14	-	80.70	3.00	0.00	0.01	0.05	0.91	0.43	0.20	0.04	131.17
Tree Canopy over Turf Grass	0.98	42.38	1.70	69.90	-	2.88	-	-	-	10.11	39.34	1.22	0.02	168.53
Forest	3.65	24.61	0.74	88.30	2.45	-	-	-	-	4.18	108.54	10.99	0.06	243.51
Wetlands, Floodplain	-	-	-	0.05	-	-	-	-	-	-	-	-	0.00	0.05
Wetlands, Other	-	-	-	-	-	-	-	-	-	-	-	-	-	-
Wetlands, Tidal	-	0.01	-	0.11	-	-	-	-	-	-	-	-	0.01	0.12
Mixed Open	35.16	211.01	1.64	442.99	76.09	318.59	-	-	-	-	104.60	7.50	0.15	1,197.73
Cropland	2.01	132.75	0.21	33.82	8.15	303.90	-	-	-	1.76	-	0.10	0.53	483.24
Pasture	0.02	53.56	0.05	2.77	4.66	34.43	-	-	-	0.27	0.49	-	0.01	96.27
Water	-	0.00	0.00	-	0.50	0.33	-	0.00	0.00	-	0.10	0.00	-	0.94
Gain	50.55	511.19	14.04	650.25	174.83	663.97	0.07	0.02	0.06	20.42	259.49	22.11	1.63	2,368.64

Augusta County, Virginia: 2013/14 – 2017/18

DRAFT		CRP	FOR	INR	IR	MO	PAS	TCI	TCT	TG	WAT
Augusta	LOSS	70	1,715	152	17	2,764	126	74	441	237	1
	GAIN	279	469	596	3	1,286	1,558	50	346	1,002	6
	NET	210	(1,246)	444	(13)	(1,477)	1,432	(24)	(95)	765	5
Version 0.9		CRP	FOR	INR	IR	MO	PAS	TCI	TCT	TG	WAT
Augusta	LOSS	69	1,638	151	17	1,211	125	73	492	225	1
	GAIN	218	435	591	3	1,276	380	49	308	742	0
	NET	149	(1,203)	439	(13)	65	255	(24)	(184)	517	(1)

CRP = cropland
FOR = forest
INR = impervious non-road
IR = impervious road
MO = mixed open
PAS = pasture
TCI = tree canopy over impervious
TCT = tree canopy over turf grass
TG = turf gras
WAT = water

T1-T2 LU	Impervious Roads	Impervious Non-Roads	Tree Canopy Over Impervious	Turf Grass	Tree Canopy over Turf Grass	Forest	Wetlands, Floodplain	Wetlands, Other	Wetlands, Tidal	Mixed Open	Cropland	Pasture	Water	Loss
Impervious Roads	-	-	16.08	-	0.48	0.04	-	-	-	-	-	-	-	16.60
Impervious Non-Roads	2.38	-	33.08	39.21	2.99	0.58	-	0.10	-	35.15	7.93	29.85	0.01	151.30
Tree Canopy Over Impervious	0.00	44.45	-	8.32	-	-	0.04	-	-	16.33	1.03	2.74	-	72.92
Turf Grass	0.01	21.98	0.00	-	199.90	0.77	-	-	-	2.16	-	0.13	-	224.95
Tree Canopy over Turf Grass	-	96.57	-	106.42	-	0.00	-	-	-	210.38	23.44	55.56	-	492.38
Forest	-	64.92	-	116.09	0.02	-	-	-	-	1,010.96	183.67	262.35	0.00	1,638.01
Wetlands, Floodplain	-	-	-	-	-	-	-	-	-	-	-	-	-	-
Wetlands, Other	-	-	-	-	-	-	-	-	-	-	-	-	-	-
Wetlands, Tidal	-	-	-	-	-	-	-	-	-	-	-	-	-	-
Mixed Open	0.94	240.02	0.16	468.91	101.92	369.17	-	-	-	-	1.24	28.91	0.00	1,211.27
Cropland	-	41.16	0.01	0.62	1.01	25.03	-	-	-	0.89	-	0.36	-	69.09
Pasture	-	81.59	0.03	2.39	1.23	39.49	-	-	-	0.36	0.30	-	-	125.38
Water	-	-	0.01	-	0.93	0.26	-	-	-	-	-	-	-	1.20
Gain	3.33	590.69	49.37	741.96	308.48	435.35	0.04	0.10	-	1,276.23	217.62	379.91	0.01	4,003.09

Baltimore County, Maryland: 2013/14 – 2017/18

DRAFT		CRP	FOR	INR	IR	MO	PAS	TCI	TCT	TG	WAT
Baltimore	LOSS	64	133	303	51	1,887	52	42	339	1,897	0
	GAIN	29	299	1,964	90	320	79	10	764	1,213	3
	NET	(36)	166	1,661	39	(1,567)	26	(32)	425	(684)	2
Version 0.9		CRP	FOR	INR	IR	MO	PAS	TCI	TCT	TG	WAT
Baltimore	LOSS	46	41	295	52	2,923	29	36	300	581	0
	GAIN	15	217	1,331	21	49	57	20	752	1,838	2
	NET	(31)	176	1,036	(31)	(2,874)	29	(16)	452	1,257	1

CRP = cropland
FOR = forest
INR = impervious non-road
IR = impervious road
MO = mixed open
PAS = pasture
TCI = tree canopy over impervious
TCT = tree canopy over turf grass
TG = turf gras
WAT = water

T1-T2 LU	Impervious Roads	Impervious Non-Roads	Tree Canopy Over Impervious	Turf Grass	Tree Canopy over Turf Grass	Forest	Wetlands, Floodplain	Wetlands, Other	Wetlands, Tidal	Mixed Open	Cropland	Pasture	Water	Loss
Impervious Roads	-	18.45	0.60	0.06	28.58	3.85	-	-	-	0.02	0.00	-	-	51.57
Impervious Non-Roads	0.74	-	4.44	170.62	79.41	15.10	0.00	-	0.01	14.06	2.89	7.82	0.04	295.12
Tree Canopy Over Impervious	1.09	5.46	-	23.66	1.54	0.45	0.00	0.00	0.01	3.63	0.21	0.30	0.01	36.37
Turf Grass	1.62	161.09	0.92	-	393.57	18.88	0.00	0.00	0.01	4.39	0.12	0.21	0.05	580.85
Tree Canopy over Turf Grass	0.41	4.76	6.00	228.98	-	28.69	-	-	-	23.72	4.48	2.70	0.09	299.82
Forest	0.05	1.00	1.13	15.42	6.11	-	-	-	-	1.45	6.28	9.41	0.03	40.88
Wetlands, Floodplain	-	-	-	-	-	-	-	-	-	-	-	-	-	-
Wetlands, Other	-	-	-	-	-	-	-	-	-	-	-	-	-	-
Wetlands, Tidal	-	-	-	-	-	-	-	-	-	-	-	-	-	-
Mixed Open	17.08	1,110.85	6.78	1,396.56	237.44	114.88	-	-	-	-	1.06	36.78	1.37	2,922.80
Cropland	0.01	13.63	0.10	1.56	2.94	26.28	-	-	-	1.31	-	0.22	0.00	46.05
Pasture	0.01	16.19	0.07	1.17	2.04	9.05	-	-	-	0.05	0.01	-	0.00	28.59
Water	0.01	0.02	-	0.01	0.38	0.07	-	-	-	0.01	-	-	-	0.49
Gain	21.01	1,331.44	20.04	1,838.05	752.00	217.25	0.01	0.00	0.03	48.64	15.05	57.45	1.58	4,302.54

Berkeley County, West Virginia: 2013/14 – 2017/18

DRAFT		CRP	FOR	INR	IR	MO	PAS	TCI	TCT	TG	WAT
Berkeley	LOSS	104	657	310	12	4,273	180	26	554	774	10
	GAIN	612	3,358	719	39	287	291	36	124	1,431	3
	NET	508	2,701	408	26	(3,986)	111	11	(429)	657	(7)
Version 0.9		CRP	FOR	INR	IR	MO	PAS	TCI	TCT	TG	WAT
Berkeley	LOSS	45	693	133	6	1,552	44	13	242	273	3
	GAIN	329	135	716	39	195	44	36	120	1,389	1
	NET	284	(558)	583	32	(1,358)	0	24	(121)	1,116	(1)

CRP = cropland
FOR = forest
INR = impervious non-road
IR = impervious road
MO = mixed open
PAS = pasture
TCI = tree canopy over impervious
TCT = tree canopy over turf grass
TG = turf gras
WAT = water

T1-T2 LU	Impervious Roads	Impervious Non-Roads	Tree Canopy Over Impervious	Turf Grass	Tree Canopy over Turf Grass	Forest	Wetlands, Floodplain	Wetlands, Other	Wetlands, Tidal	Mixed Open	Cropland	Pasture	Water	Loss
Impervious Roads	-	0.88	4.28	0.64	0.04	0.26	-	-	-	0.01	-	-	-	6.11
Impervious Non-Roads	4.14	-	31.93	70.52	0.94	0.16	0.02	-	-	6.99	15.83	2.37	0.02	132.92
Tree Canopy Over Impervious	0.08	3.40	-	7.75	-	-	-	-	-	0.68	0.63	0.03	-	12.58
Turf Grass	0.45	85.85	0.00	-	93.21	1.84	-	-	-	90.75	0.83	-	0.00	272.93
Tree Canopy over Turf Grass	2.15	51.65	-	115.63	-	0.00	-	-	-	32.84	35.62	3.92	0.01	241.81
Forest	5.54	65.35	-	338.34	0.22	-	-	-	-	44.91	206.28	32.38	0.10	693.12
Wetlands, Floodplain	-	-	-	-	-	-	-	-	-	-	-	-	-	-
Wetlands, Other	-	-	-	-	-	-	-	-	-	-	-	-	-	-
Wetlands, Tidal	-	-	-	-	-	-	-	-	-	-	-	-	-	-
Mixed Open	17.03	467.79	0.06	853.51	24.69	117.00	-	-	-	-	66.00	5.36	0.99	1,552.43
Cropland	3.14	30.00	0.01	2.17	0.07	5.75	-	-	-	4.21	-	-	0.00	45.35
Pasture	5.97	11.25	0.02	0.44	0.16	8.05	-	-	-	14.13	3.77	-	0.04	43.82
Water	-	-	0.00	-	1.04	1.61	-	-	-	0.00	-	-	-	2.66
Gain	38.50	716.18	36.29	1,389.01	120.36	134.67	0.02	-	-	194.51	328.95	44.07	1.16	3,003.72

Bradford County, Pennsylvania: 2013/14 – 2017/18

DRAFT		CRP	FOR	INR	IR	MO	PAS	TCI	TCT	TG	WAT
Bradford	LOSS	53	1,529	299	7	3,451	241	45	220	178	6
	GAIN	312	529	649	24	111	2,091	16	185	2,102	12
	NET	259	(1,000)	350	16	(3,340)	1,849	(29)	(35)	1,924	7
Version 0.9		CRP	FOR	INR	IR	MO	PAS	TCI	TCT	TG	WAT
Bradford	LOSS	56	1,025	294	5	2,886	248	49	677	155	6
	GAIN	183	535	641	19	104	832	12	206	2,862	4
	NET	128	(490)	347	15	(2,782)	584	(38)	(471)	2,707	(1)

CRP = cropland
FOR = forest
INR = impervious non-road
IR = impervious road
MO = mixed open
PAS = pasture
TCI = tree canopy over impervious
TCT = tree canopy over turf grass
TG = turf gras
WAT = water

T1-T2 LU	Impervious Roads	Impervious Non-Roads	Tree Canopy Over Impervious	Turf Grass	Tree Canopy over Turf Grass	Forest	Wetlands, Floodplain	Wetlands, Other	Wetlands, Tidal	Mixed Open	Cropland	Pasture	Water	Loss
Impervious Roads	-	-	4.57	-	0.16	0.18	-	-	-	-	-	-	-	4.90
Impervious Non-Roads	2.21	-	5.56	81.13	1.21	0.19	0.59	-	-	12.14	32.39	158.56	-	293.98
Tree Canopy Over Impervious	1.18	3.06	-	17.23	0.21	0.00	0.07	0.01	-	24.96	0.40	2.09	-	49.20
Turf Grass	0.20	49.31	0.10	-	91.62	10.39	0.34	-	-	1.79	0.00	1.08	-	154.83
Tree Canopy over Turf Grass	2.24	103.78	0.07	466.78	-	0.87	-	-	-	25.26	11.69	66.09	0.01	676.77
Forest	4.64	92.88	0.06	575.39	3.63	-	-	-	-	36.21	60.72	251.13	0.01	1,024.68
Wetlands, Floodplain	-	-	-	0.19	-	-	-	-	-	-	-	-	-	0.19
Wetlands, Other	-	-	-	0.03	-	-	-	-	-	-	-	-	-	0.03
Wetlands, Tidal	-	-	-	-	-	-	-	-	-	-	-	-	-	-
Mixed Open	4.26	204.35	1.24	1,706.41	103.00	455.49	-	-	-	-	61.64	345.40	4.23	2,886.02
Cropland	0.00	30.15	0.02	2.31	0.16	12.58	-	-	-	2.28	-	8.04	-	55.54
Pasture	4.67	157.89	0.07	12.61	2.00	52.78	-	-	-	1.48	16.59	-	-	248.09
Water	-	-	-	-	4.24	1.29	-	-	-	-	-	-	-	5.54
Gain	19.40	641.42	11.68	2,862.08	206.23	533.77	1.00	0.01	-	104.12	183.42	832.38	4.25	5,399.76

Chenango County, New York: 2013/14 – 2017/18

DRAFT		CRP	FOR	INR	IR	MO	PAS	TCI	TCT	TG	WAT
Chenango	LOSS	17	471	67	16	2,851	98	28	117	433	4
	GAIN	44	486	189	0	58	1,119	26	481	1,690	10
	NET	27	16	121	(16)	(2,793)	1,020	(2)	364	1,258	7
Version 0.9		CRP	FOR	INR	IR	MO	PAS	TCI	TCT	TG	WAT
Chenango	LOSS	17	441	67	16	1,303	106	28	119	418	4
	GAIN	10	461	187	0	50	167	26	451	1,165	3
	NET	(7)	20	119	(16)	(1,254)	61	(2)	332	748	(1)

CRP = cropland
FOR = forest
INR = impervious non-road
IR = impervious road
MO = mixed open
PAS = pasture
TCI = tree canopy over impervious
TCT = tree canopy over turf grass
TG = turf gras
WAT = water

T1-T2 LU	Impervious Roads	Impervious Non-Roads	Tree Canopy Over Impervious	Turf Grass	Tree Canopy over Turf Grass	Forest	Wetlands, Floodplain	Wetlands, Other	Wetlands, Tidal	Mixed Open	Cropland	Pasture	Water	Loss
Impervious Roads	-	-	14.42	-	1.15	0.38	-	-	-	-	-	0.46	-	16.41
Impervious Non-Roads	-	-	11.31	39.34	0.21	0.06	0.03	-	-	2.83	1.33	12.09	-	67.20
Tree Canopy Over Impervious	-	0.74	-	10.70	-	-	0.03	-	-	15.11	0.34	0.93	-	27.86
Turf Grass	0.00	39.08	-	-	368.53	5.85	0.07	-	-	3.86	-	0.19	-	417.57
Tree Canopy over Turf Grass	-	24.45	-	78.78	-	0.00	-	-	-	4.81	2.37	8.35	-	118.77
Forest	-	12.90	-	343.52	0.00	-	-	-	-	16.43	3.37	64.31	-	440.53
Wetlands, Floodplain	-	-	-	-	-	-	-	-	-	-	-	-	-	-
Wetlands, Other	-	-	-	-	-	-	-	-	-	-	-	-	-	-
Wetlands, Tidal	-	-	-	-	-	-	-	-	-	-	-	-	-	-
Mixed Open	0.00	73.15	0.00	686.65	77.45	379.67	-	-	-	-	2.89	80.83	2.79	1,303.44
Cropland	-	4.06	-	0.08	0.14	13.00	-	-	-	0.02	-	-	-	17.29
Pasture	-	32.18	-	6.29	0.37	60.84	-	-	-	6.53	-	-	-	106.20
Water	-	-	-	-	2.74	1.01	-	-	-	-	-	-	-	3.74
Gain	0.00	186.56	25.74	1,165.36	450.59	460.80	0.13	-	-	49.59	10.30	167.17	2.79	2,519.02

Clearfield County, Pennsylvania: 2013/14 – 2017/18

DRAFT		CRP	FOR	INR	IR	MO	PAS	TCI	TCT	TG	WAT
Clearfield	LOSS	47	4,846	194	7	5,309	137	63	600	402	3
	GAIN	887	827	819	2	4,143	3,668	20	585	651	7
	NET	840	(4,019)	625	(5)	(1,166)	3,531	(44)	(16)	249	4
Version 0.9		CRP	FOR	INR	IR	MO	PAS	TCI	TCT	TG	WAT
Clearfield	LOSS	39	4,732	154	7	1,982	69	63	340	307	3
	GAIN	172	863	812	2	4,236	444	20	325	821	2
	NET	133	(3,869)	658	(5)	2,253	375	(44)	(15)	514	(1)

CRP = cropland
FOR = forest
INR = impervious non-road
IR = impervious road
MO = mixed open
PAS = pasture
TCI = tree canopy over impervious
TCT = tree canopy over turf grass
TG = turf gras
WAT = water

T1-T2 LU	Impervious Roads	Impervious Non-Roads	Tree Canopy Over Impervious	Turf Grass	Tree Canopy over Turf Grass	Forest	Wetlands, Floodplain	Wetlands, Other	Wetlands, Tidal	Mixed Open	Cropland	Pasture	Water	Loss
Impervious Roads	-	0.22	6.49	-	0.14	0.60	-	-	-	0.04	-	-	-	7.49
Impervious Non-Roads	0.37	-	12.74	15.18	0.17	0.26	0.26	2.98	-	110.55	2.23	9.19	-	153.92
Tree Canopy Over Impervious	0.00	2.89	-	21.27	-	-	0.15	0.21	-	38.03	0.39	0.32	-	63.25
Turf Grass	0.00	73.53	0.00	-	219.66	0.71	0.12	0.06	-	6.44	3.50	3.31	-	307.32
Tree Canopy over Turf Grass	0.00	95.86	-	58.53	-	0.00	-	-	-	154.01	9.98	21.83	-	340.21
Forest	0.50	245.30	-	383.97	0.35	-	-	-	-	3,917.24	59.55	125.59	-	4,732.49
Wetlands, Floodplain	-	-	-	-	-	-	-	-	-	-	-	-	-	-
Wetlands, Other	-	-	-	-	-	-	-	-	-	-	-	-	-	-
Wetlands, Tidal	-	-	-	-	-	-	-	-	-	-	-	-	-	-
Mixed Open	0.25	314.40	0.27	341.78	102.64	847.58	-	-	-	-	89.89	283.72	1.81	1,982.36
Cropland	-	33.51	0.00	0.17	0.22	2.66	-	-	-	1.85	-	0.52	-	38.92
Pasture	1.02	46.53	-	0.43	0.18	7.15	-	-	-	7.49	6.36	-	-	69.15
Water	-	-	-	-	2.05	0.56	0.17	0.00	-	-	-	-	-	2.77
Gain	2.14	812.23	19.50	821.32	325.40	859.52	0.69	3.24	-	4,235.65	171.91	444.46	1.81	7,697.89

Cumberland County, Pennsylvania: 2013/14 – 2017/18

DRAFT		CRP	FOR	INR	IR	MO	PAS	TCI	TCT	TG	WAT
Cumberland	LOSS	1,223	7,564	547	10	1,673	838	154	1,495	2,915	1
	GAIN	1,133	4,670	5,482	116	511	486	64	752	3,207	2
	NET	(90)	(2,895)	4,935	105	(1,162)	(353)	(90)	(743)	292	0
Version 0.9		CRP	FOR	INR	IR	MO	PAS	TCI	TCT	TG	WAT
Cumberland	LOSS	425	1,282	259	4	1,962	218	105	1,115	579	1
	GAIN	556	232	2,310	33	163	244	26	294	2,092	0
	NET	132	(1,051)	2,050	29	(1,799)	26	(79)	(821)	1,513	(1)

CRP = cropland
FOR = forest
INR = impervious non-road
IR = impervious road
MO = mixed open
PAS = pasture
TCI = tree canopy over impervious
TCT = tree canopy over turf grass
TG = turf gras
WAT = water

T1-T2 LU	Impervious Roads	Impervious Non-Roads	Tree Canopy Over Impervious	Turf Grass	Tree Canopy over Turf Grass	Forest	Wetlands, Floodplain	Wetlands, Other	Wetlands, Tidal	Mixed Open	Cropland	Pasture	Water	Loss
Impervious Roads	-	-	3.60	-	0.23	0.12	-	-	-	-	-	-	-	3.95
Impervious Non-Roads	5.53	-	16.60	147.97	7.60	1.24	-	-	-	19.47	33.98	26.82	-	259.22
Tree Canopy Over Impervious	0.13	50.61	-	29.70	0.56	0.00	-	-	-	8.61	6.19	8.74	-	104.54
Turf Grass	2.55	280.77	0.40	-	263.81	23.65	-	-	-	2.12	5.34	0.01	-	578.65
Tree Canopy over Turf Grass	2.42	220.92	0.26	691.20	-	0.09	-	-	-	70.83	90.19	38.99	0.00	1,114.90
Forest	0.00	142.76	0.06	587.71	1.89	-	-	-	-	58.29	343.67	147.90	0.00	1,282.28
Wetlands, Floodplain	-	-	-	-	-	-	-	-	-	-	-	-	-	-
Wetlands, Other	-	-	-	-	-	-	-	-	-	-	-	-	-	-
Wetlands, Tidal	-	-	-	-	-	-	-	-	-	-	-	-	-	-
Mixed Open	21.46	1,076.99	4.65	619.16	17.98	139.03	-	-	-	-	71.05	11.72	0.00	1,962.05
Cropland	0.84	368.22	0.10	11.39	0.56	32.66	-	-	-	0.96	-	10.01	-	424.73
Pasture	0.04	169.29	0.07	4.52	1.02	34.50	-	-	-	2.72	6.03	-	-	218.18
Water	-	0.00	0.00	-	0.57	0.23	-	-	-	-	-	-	-	0.81
Gain	32.97	2,309.56	25.75	2,091.65	294.23	231.53	-	-	-	162.99	556.45	244.18	0.00	5,949.31

Gloucester County, Virginia: 2013/14 – 2017/18

CRP = cropland
FOR = forest
INR = impervious non-road
IR = impervious road
MO = mixed open
PAS = pasture
TCI = tree canopy over impervious
TCT = tree canopy over turf grass
TG = turf gras
WAT = water

DRAFT		CRP	FOR	INR	IR	MO	PAS	TCI	TCT	TG	WAT
Gloucester	LOSS	26	3,408	61	2	2,708	1	20	653	64	1
	GAIN	591	1,867	114	6	289	103	8	88	3,876	0
	NET	565	(1,541)	53	3	(2,418)	103	(12)	(565)	3,813	(1)
Version 0.9		CRP	FOR	INR	IR	MO	PAS	TCI	TCT	TG	WAT
Gloucester	LOSS	27	2,993	58	2	2,615	1	22	987	54	1
	GAIN	533	1,845	111	6	286	102	8	87	3,781	0
	NET	507	(1,147)	53	3	(2,329)	102	(14)	(900)	3,727	(1)

T1-T2 LU	Impervious Roads	Impervious Non-Roads	Tree Canopy Over Impervious	Turf Grass	Tree Canopy over Turf Grass	Forest	Wetlands, Floodplain	Wetlands, Other	Wetlands, Tidal	Mixed Open	Cropland	Pasture	Water	Loss
Impervious Roads	-	-	0.98	-	0.59	0.55	-	-	-	-	-	-	-	2.11
Impervious Non-Roads	0.83	-	5.59	39.40	1.75	4.20	-	0.10	0.07	3.09	2.42	0.25	-	57.70
Tree Canopy Over Impervious	0.03	5.88	-	11.17	-	-	0.06	-	-	3.17	1.07	0.40	-	21.77
Turf Grass	0.59	10.96	0.09	-	39.87	2.27	-	-	0.03	0.43	-	-	0.00	54.25
Tree Canopy over Turf Grass	2.98	30.22	-	815.07	-	0.00	-	-	-	75.40	62.53	0.89	0.00	987.09
Forest	0.14	20.97	0.00	2,235.53	0.02	-	-	-	-	203.47	432.45	99.95	0.00	2,992.53
Wetlands, Floodplain	-	-	-	-	-	-	-	-	-	-	-	-	-	-
Wetlands, Other	-	-	-	-	-	-	-	-	-	-	-	-	-	-
Wetlands, Tidal	-	-	-	-	-	-	-	-	-	-	-	-	-	-
Mixed Open	0.97	32.37	1.07	679.36	43.59	1,821.82	-	-	-	-	34.66	0.88	0.03	2,614.77
Cropland	0.00	9.91	0.03	0.48	0.27	15.91	-	-	-	-	-	-	-	26.60
Pasture	0.00	0.48	0.00	-	-	0.08	-	-	-	-	-	-	-	0.57
Water	-	-	-	-	0.68	0.07	-	-	-	-	-	-	-	0.75
Gain	5.53	110.79	7.77	3,781.01	86.76	1,844.91	0.06	0.10	0.10	285.56	533.13	102.38	0.04	6,758.13

Hardy County, West Virginia: 2013/14 – 2017/18

DRAFT		CRP	FOR	INR	IR	MO	PAS	TCI	TCT	TG	WAT
Hardy	LOSS	3	1,308	16	0	1,028	27	36	334	99	0
	GAIN	110	182	160	0	886	966	2	143	400	3
	NET	107	(1,126)	144	(0)	(142)	939	(34)	(192)	300	3
Version 0.9		CRP	FOR	INR	IR	MO	PAS	TCI	TCT	TG	WAT
Hardy	LOSS	2	1,142	16	0	284	20	36	500	56	0
	GAIN	70	55	159	0	886	508	2	55	319	1
	NET	68	(1,087)	143	(0)	602	488	(34)	(445)	263	0

CRP = cropland
FOR = forest
INR = impervious non-road
IR = impervious road
MO = mixed open
PAS = pasture
TCI = tree canopy over impervious
TCT = tree canopy over turf grass
TG = turf gras
WAT = water

T1-T2 LU	Impervious Roads	Impervious Non-Roads	Tree Canopy Over Impervious	Turf Grass	Tree Canopy over Turf Grass	Forest	Wetlands, Floodplain	Wetlands, Other	Wetlands, Tidal	Mixed Open	Cropland	Pasture	Water	Loss
Impervious Roads	-	-	0.00	-	0.01	0.00	-	-	-	-	-	-	-	0.01
Impervious Non-Roads	-	-	1.94	4.68	0.76	0.04	-	-	-	6.14	0.26	1.85	-	15.67
Tree Canopy Over Impervious	0.00	1.51	-	5.40	-	-	0.03	-	-	26.44	0.39	1.83	-	35.60
Turf Grass	-	7.88	-	-	46.37	0.24	-	-	-	1.62	0.01	-	-	56.11
Tree Canopy over Turf Grass	0.00	16.97	-	80.09	-	0.00	-	-	-	312.33	7.20	82.97	0.00	499.57
Forest	-	25.76	-	109.68	0.08	-	-	-	-	539.63	61.61	404.33	0.54	1,141.64
Wetlands, Floodplain	-	-	-	-	-	-	-	-	-	-	-	-	-	-
Wetlands, Other	-	-	-	-	-	-	-	-	-	-	-	-	-	-
Wetlands, Tidal	-	-	-	-	-	-	-	-	-	-	-	-	-	-
Mixed Open	0.00	94.44	-	117.77	7.48	46.55	-	-	-	-	0.00	17.15	0.41	283.80
Cropland	-	0.89	-	0.35	0.02	0.98	-	-	-	0.00	-	-	-	2.24
Pasture	-	11.58	-	0.78	0.07	6.65	-	-	-	0.06	0.76	-	-	19.90
Water	-	-	-	-	0.00	0.48	-	-	-	-	-	-	-	0.48
Gain	0.00	159.02	1.94	318.75	54.79	54.95	0.03	-	-	886.22	70.23	508.13	0.95	2,055.03

Lancaster County, Pennsylvania: 2013/14 – 2017/18

DRAFT		CRP	FOR	INR	IR	MO	PAS	TCI	TCT	TG	WAT
Lancaster	LOSS	840	953	175	9	3,140	255	76	616	687	4
	GAIN	844	285	2,680	38	163	182	56	385	2,118	6
	NET	3	(668)	2,506	29	(2,977)	(74)	(20)	(231)	1,431	2
Version 0.9		CRP	FOR	INR	IR	MO	PAS	TCI	TCT	TG	WAT
Lancaster	LOSS	831	769	177	9	2,656	263	75	681	552	4
	GAIN	476	279	2,675	38	159	125	56	390	1,819	1
	NET	(356)	(490)	2,498	29	(2,497)	(138)	(20)	(291)	1,267	(3)

CRP = cropland
FOR = forest
INR = impervious non-road
IR = impervious road
MO = mixed open
PAS = pasture
TCI = tree canopy over impervious
TCT = tree canopy over turf grass
TG = turf gras
WAT = water

T1-T2 LU	Impervious Roads	Impervious Non-Roads	Tree Canopy Over Impervious	Turf Grass	Tree Canopy over Turf Grass	Forest	Wetlands, Floodplain	Wetlands, Other	Wetlands, Tidal	Mixed Open	Cropland	Pasture	Water	Loss
Impervious Roads	-	-	6.99	-	0.76	1.03	-	-	-	-	-	-	-	8.78
Impervious Non-Roads	9.18	-	48.89	65.73	2.83	0.12	0.03	-	-	7.26	33.54	9.61	0.00	177.21
Tree Canopy Over Impervious	0.11	50.02	-	13.63	-	0.01	0.00	0.01	-	8.45	2.64	0.54	-	75.42
Turf Grass	0.64	274.70	-	-	263.91	2.37	0.03	-	-	3.97	6.08	0.37	0.00	552.07
Tree Canopy over Turf Grass	0.63	269.50	-	311.78	-	0.24	-	-	-	33.70	54.34	10.96	0.00	681.17
Forest	1.57	105.28	-	213.50	0.01	-	-	-	-	101.30	284.27	62.59	0.00	768.51
Wetlands, Floodplain	-	0.25	-	-	-	-	-	-	-	-	-	-	0.00	0.25
Wetlands, Other	-	-	-	-	-	-	-	-	-	-	-	-	-	-
Wetlands, Tidal	-	-	-	-	-	-	-	-	-	-	-	-	-	-
Mixed Open	24.46	1,075.57	0.03	1,195.88	108.09	135.03	-	-	-	-	82.23	33.69	1.05	2,656.04
Cropland	1.36	685.81	0.00	14.29	10.25	109.51	-	-	-	3.30	-	6.80	0.00	831.32
Pasture	0.00	214.33	0.00	4.16	1.92	28.26	-	-	-	1.47	12.55	-	-	262.68
Water	-	0.00	-	-	2.05	1.91	-	-	-	-	-	-	-	3.96
Gain	37.95	2,675.45	55.92	1,818.97	389.83	278.49	0.07	0.01	-	159.45	475.65	124.56	1.06	6,017.41

Loudoun County, Virginia: 2013/14 – 2017/18

DRAFT		CRP	FOR	INR	IR	MO	PAS	TCI	TCT	TG	WAT
Loudoun	LOSS	52	1,898	438	54	9,168	55	95	1,816	783	2
	GAIN	345	390	2,846	505	661	1,429	153	552	7,463	19
	NET	293	(1,509)	2,408	451	(8,507)	1,374	57	(1,264)	6,680	17
Version 0.9		CRP	FOR	INR	IR	MO	PAS	TCI	TCT	TG	WAT
Loudoun	LOSS	53	3,100	460	41	6,095	49	107	507	385	2
	GAIN	160	461	2,559	473	1,151	151	110	396	5,334	3
	NET	107	(2,639)	2,100	432	(4,944)	101	3	(111)	4,949	1

CRP = cropland
FOR = forest
INR = impervious non-road
IR = impervious road
MO = mixed open
PAS = pasture
TCI = tree canopy over impervious
TCT = tree canopy over turf grass
TG = turf gras
WAT = water

T1-T2 LU	Impervious Roads	Impervious Non-Roads	Tree Canopy Over Impervious	Turf Grass	Tree Canopy over Turf Grass	Forest	Wetlands, Floodplain	Wetlands, Other	Wetlands, Tidal	Mixed Open	Cropland	Pasture	Water	Loss
Impervious Roads	-	3.15	29.57	0.00	3.97	3.23	0.00	-	-	0.99	-	-	-	40.93
Impervious Non-Roads	135.93	-	68.85	168.90	11.33	7.85	0.07	0.00	-	60.22	1.92	4.65	-	459.72
Tree Canopy Over Impervious	2.90	62.49	-	15.92	2.44	0.00	0.07	-	-	21.17	0.55	1.00	-	106.55
Turf Grass	17.27	75.82	1.81	-	200.62	34.98	0.25	0.00	-	53.64	0.27	0.84	-	385.49
Tree Canopy over Turf Grass	21.35	215.40	0.25	141.71	-	-	-	-	-	106.99	5.48	16.09	-	507.27
Forest	81.76	800.80	1.54	1,115.69	19.37	-	-	-	-	901.97	65.06	113.68	-	3,099.87
Wetlands, Floodplain	-	-	0.00	-	-	-	-	-	-	-	-	-	-	-
Wetlands, Other	-	-	-	-	-	-	-	-	-	-	-	-	-	-
Wetlands, Tidal	-	-	-	-	-	-	-	-	-	-	-	-	-	-
Mixed Open	211.12	1,364.69	7.59	3,857.66	155.18	398.33	-	-	-	-	82.80	14.27	3.12	6,094.76
Cropland	2.86	16.19	0.04	22.21	0.99	4.82	-	-	-	5.59	-	-	-	52.71
Pasture	0.01	20.76	0.05	12.36	1.15	10.30	-	-	-	0.42	4.05	-	-	49.11
Water	-	0.12	0.01	-	1.08	0.77	0.00	0.00	-	-	-	-	-	1.99
Gain	473.21	2,559.42	109.70	5,334.46	396.14	460.28	0.39	0.01	-	1,151.00	160.12	150.54	3.12	10,798.38

Queen Anne’s County, Maryland: 2013/14 – 2017/18

DRAFT		CRP	FOR	INR	IR	MO	PAS	TCI	TCT	TG	WAT
Queen Anne's	LOSS	489	394	29	3	1,212	95	15	135	328	1
	GAIN	446	667	637	64	78	101	13	175	517	2
	NET	(43)	273	609	61	(1,134)	5	(2)	41	189	1
Version 0.9		CRP	FOR	INR	IR	MO	PAS	TCI	TCT	TG	WAT
Queen Anne's	LOSS	483	244	33	3	1,198	96	11	169	131	1
	GAIN	259	664	511	51	20	22	14	175	650	2
	NET	(224)	420	478	48	(1,177)	(74)	3	6	519	1

CRP = cropland
FOR = forest
INR = impervious non-road
IR = impervious road
MO = mixed open
PAS = pasture
TCI = tree canopy over impervious
TCT = tree canopy over turf grass
TG = turf gras
WAT = water

T1-T2 LU	Impervious Roads	Impervious Non-Roads	Tree Canopy Over Impervious	Turf Grass	Tree Canopy over Turf Grass	Forest	Wetlands, Floodplain	Wetlands, Other	Wetlands, Tidal	Mixed Open	Cropland	Pasture	Water	Loss
Impervious Roads	-	0.40	1.05	0.17	0.23	0.12	-	-	-	0.65	0.00	0.00	-	2.61
Impervious Non-Roads	6.82	-	8.52	6.71	1.85	0.49	0.04	0.01	0.01	1.06	5.31	1.67	0.82	33.31
Tree Canopy Over Impervious	0.23	2.45	-	5.44	0.21	0.22	0.03	0.00	0.00	1.47	0.68	0.43	-	11.15
Turf Grass	1.68	44.02	0.14	-	80.70	3.00	0.00	0.01	0.05	0.91	0.43	0.20	0.04	131.17
Tree Canopy over Turf Grass	0.98	42.38	1.70	69.90	-	2.88	-	-	-	10.11	39.34	1.22	0.02	168.53
Forest	3.65	24.61	0.74	88.30	2.45	-	-	-	-	4.18	108.54	10.99	0.06	243.51
Wetlands, Floodplain	-	-	-	0.05	-	-	-	-	-	-	-	-	0.00	0.05
Wetlands, Other	-	-	-	-	-	-	-	-	-	-	-	-	-	-
Wetlands, Tidal	-	0.01	-	0.11	-	-	-	-	-	-	-	-	0.01	0.12
Mixed Open	35.16	211.01	1.64	442.99	76.09	318.59	-	-	-	-	104.60	7.50	0.15	1,197.73
Cropland	2.01	132.75	0.21	33.82	8.15	303.90	-	-	-	1.76	-	0.10	0.53	483.24
Pasture	0.02	53.56	0.05	2.77	4.66	34.43	-	-	-	0.27	0.49	-	0.01	96.27
Water	-	0.00	0.00	-	0.50	0.33	-	0.00	0.00	-	0.10	0.00	-	0.94
Gain	50.55	511.19	14.04	650.25	174.83	663.97	0.07	0.02	0.06	20.42	259.49	22.11	1.63	2,368.64

Sussex County, Delaware: 2013/14 – 2017/18

DRAFT		CRP	FOR	INR	IR	MO	PAS	TCI	TCT	TG	WAT
Sussex	LOSS	1,113	5,149	92	16	7,096	133	123	1,606	897	4
	GAIN	3,285	2,530	3,985	269	2,617	561	50	601	2,316	14
	NET	2,172	(2,618)	3,894	254	(4,479)	429	(74)	(1,005)	1,418	10
Version 0.9		CRP	FOR	INR	IR	MO	PAS	TCI	TCT	TG	WAT
Sussex	LOSS	1,068	4,287	111	13	6,875	115	177	2,199	525	5
	GAIN	2,451	2,566	3,887	245	2,581	447	47	584	2,557	9
	NET	1,383	(1,721)	3,776	232	(4,294)	332	(130)	(1,615)	2,032	4

CRP = cropland
FOR = forest
INR = impervious non-road
IR = impervious road
MO = mixed open
PAS = pasture
TCI = tree canopy over impervious
TCT = tree canopy over turf grass
TG = turf gras
WAT = water

T1-T2 LU	Impervious Roads	Impervious Non-Roads	Tree Canopy Over Impervious	Turf Grass	Tree Canopy over Turf Grass	Forest	Wetlands, Floodplain	Wetlands, Other	Wetlands, Tidal	Mixed Open	Cropland	Pasture	Water	Loss
Impervious Roads	-	2.76	7.60	0.85	0.67	0.94	-	-	-	0.05	0.15	-	-	13.01
Impervious Non-Roads	17.10	-	27.67	31.73	6.59	2.44	-	-	0.00	4.22	14.08	7.35	-	111.19
Tree Canopy Over Impervious	0.06	46.53	-	56.05	1.89	0.05	0.02	0.00	0.01	53.09	17.26	2.10	-	177.07
Turf Grass	12.90	204.70	0.59	-	263.74	32.01	-	-	-	5.00	4.34	2.01	-	525.29
Tree Canopy over Turf Grass	27.79	575.40	5.55	386.78	-	3.54	-	-	-	803.98	292.16	103.27	0.03	2,198.50
Forest	31.84	258.86	1.56	208.42	10.35	-	-	-	-	1,677.40	1,859.07	238.75	0.05	4,286.29
Wetlands, Floodplain	-	-	-	-	-	-	-	-	-	-	-	-	-	-
Wetlands, Other	-	-	-	-	-	-	-	-	-	-	-	-	-	-
Wetlands, Tidal	-	-	-	0.60	-	-	-	-	-	-	-	-	-	0.60
Mixed Open	124.30	1,920.17	3.61	1,816.58	293.13	2,374.02	-	-	-	-	259.56	74.23	9.37	6,874.97
Cropland	29.42	805.61	0.18	49.17	2.76	133.21	-	-	-	27.75	-	19.67	-	1,067.78
Pasture	1.56	72.78	0.03	7.12	1.07	18.31	-	-	-	9.84	4.20	-	-	114.90
Water	-	0.00	0.02	-	3.39	1.58	-	0.00	-	-	-	-	-	4.98
Gain	244.97	3,886.79	46.81	2,557.30	583.58	2,566.10	0.02	0.00	0.02	2,581.34	2,450.80	447.39	9.45	15,374.57

Wicomico County, Maryland: 2013/14 – 2017/18

DRAFT		CRP	FOR	INR	IR	MO	PAS	TCI	TCT	TG	WAT
Wicomico	LOSS	582	1,597	91	5	3,709	50	52	319	568	8
	GAIN	1,677	3,121	639	19	53	89	0	555	825	3
	NET	1,094	1,524	549	15	(3,656)	39	(52)	236	257	(6)
Version 0.9		CRP	FOR	INR	IR	MO	PAS	TCI	TCT	TG	WAT
Wicomico	LOSS	516	1,759	104	5	2,698	24	51	80	397	8
	GAIN	1,199	2,408	567	7	244	62	1	444	710	0
	NET	684	648	464	2	(2,454)	37	(50)	363	313	(8)

CRP = cropland
FOR = forest
INR = impervious non-road
IR = impervious road
MO = mixed open
PAS = pasture
TCI = tree canopy over impervious
TCT = tree canopy over turf grass
TG = turf gras
WAT = water

T1-T2 LU	Impervious Roads	Impervious Non-Roads	Tree Canopy Over Impervious	Turf Grass	Tree Canopy over Turf Grass	Forest	Wetlands, Floodplain	Wetlands, Other	Wetlands, Tidal	Mixed Open	Cropland	Pasture	Water	Loss
Impervious Roads	-	-	0.18	-	2.77	2.01	0.03	-	-	-	-	-	-	4.99
Impervious Non-Roads	1.98	-	0.40	42.80	19.02	3.84	0.72	0.11	-	8.87	25.86	0.02	-	103.63
Tree Canopy Over Impervious	0.01	30.50	-	12.05	0.45	-	0.13	0.00	0.03	5.26	2.66	0.09	-	51.16
Turf Grass	0.25	30.26	0.07	-	336.29	22.21	0.88	0.07	0.01	6.01	1.21	-	-	397.27
Tree Canopy over Turf Grass	-	35.73	0.10	29.33	-	-	-	-	-	8.04	7.00	0.21	0.00	80.41
Forest	0.17	100.50	0.32	247.13	5.05	-	-	-	-	199.77	1,144.97	61.39	-	1,759.30
Wetlands, Floodplain	-	0.00	0.00	0.00	-	-	-	-	-	-	-	-	-	-
Wetlands, Other	-	-	-	-	-	-	-	-	-	-	-	-	-	-
Wetlands, Tidal	-	-	-	-	-	-	-	-	-	-	-	-	-	-
Mixed Open	3.96	186.35	0.06	351.75	65.95	2,072.07	-	-	-	-	17.79	-	0.26	2,698.20
Cropland	0.86	182.17	0.01	26.54	10.59	279.03	-	-	-	16.44	-	-	-	515.63
Pasture	-	1.86	-	0.40	0.08	22.02	-	-	-	-	-	-	-	24.36
Water	-	-	-	-	3.68	4.40	0.16	0.01	-	-	-	-	-	8.25
Gain	7.24	567.37	1.14	710.01	443.87	2,405.58	1.92	0.20	0.04	244.39	1,199.48	61.71	0.26	5,643.22