

Poultry Litter Subcommittee Data Update

Agriculture Workgroup Meeting
USDA Beltsville Agricultural Research Center
Beltsville, Maryland
8 August 2013

Committee Membership

Jim Glancey	UD
Mark Dubin	UM
Emma Giese	CBPO
Mark Davis	DDA
Tom Basden	WVU
Bill Brown	UD
Glenn Carpenter	USDA NRCS
Frank Coale	UM
Jason Dalrymple	WVDA
Doug Goodlander	PA DEP
Matt Johnston	CBPO
Bobby Long	VA DCR

Jen Nelson	USDA NRCS
Jerry Ours	WVDA
Paul Patterson	Penn State
Jim Pease	VT
Royden Powell	MDA
Tim Sexton	VA DCR
Kelly Shenk	EPA
Trish Steinhilber	UM
Jeff Sweeney	EPA
Jennifer Timmons	UM
Jennifer Weld	PSU
Hank Zygmunt	Keith Campbell

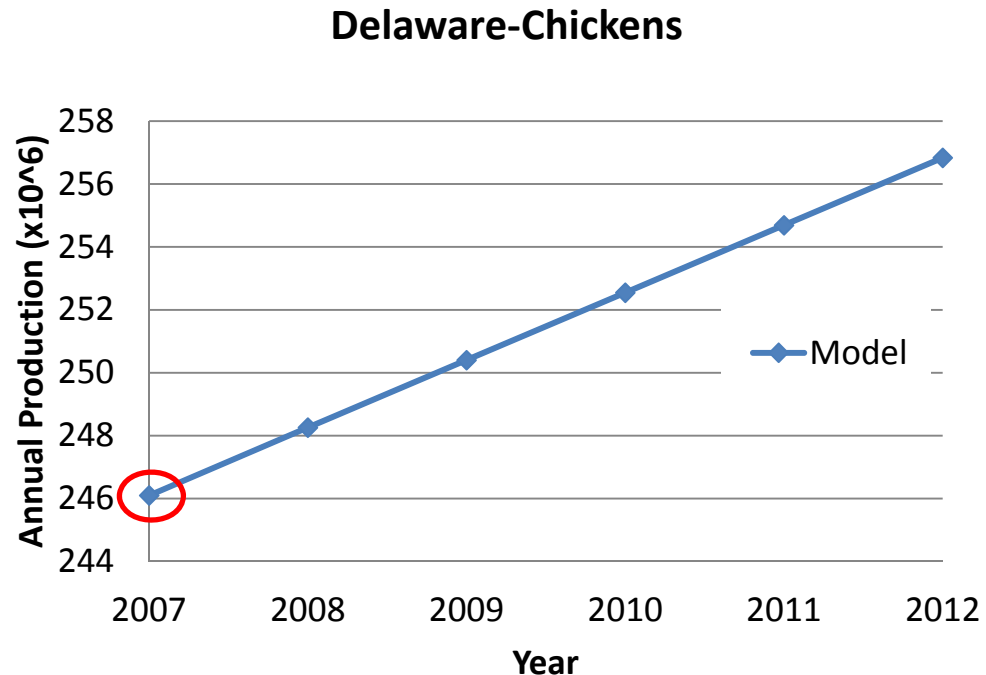
Subcommittee Charge

- Develop estimates for current and historical N and P concentrations in poultry litter.
- Develop estimates for current and historical poultry litter generation volumes.
- Develop alternate methods to estimate poultry population numbers across the watershed and compare to current methods used in the model.

Focus Today

Current Method to Model Poultry Populations within the Watershed

- Based on the 5 year Ag Census data.
- Most recent census in 2007.
- For 2007, the population, P , is the census number.
- Apply an escalation factor, f , to estimate subsequent years.
- $P(i+1) = f * P(i)$, where $f \sim 1.01$



Potential Data Sources for Population Estimates

(Birds per year)

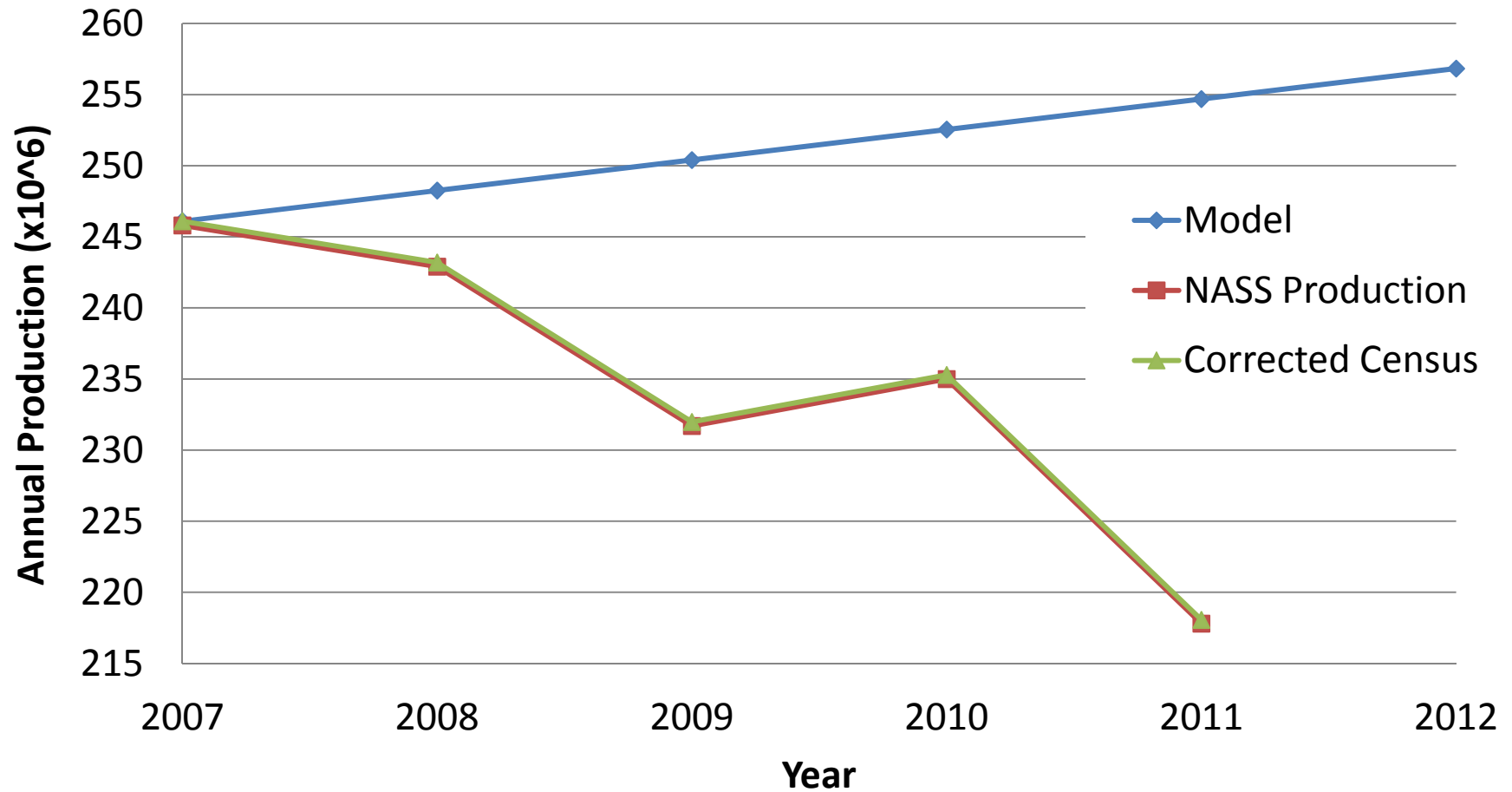
Delaware

Year	Census	NASS Placements*	NASS Production	NASS Slaughter
2012	?	215,987,000	Not Yet	309,147,000
2011	?	223,589,000	217,800,000	302,305,000
2010	?	243,035,000	235,000,000	304,471,000
2009	?	243,572,000	231,700,000	296,595,000
2008	?	245,505,000	242,900,000	304,657,000
2007	246,098,878	257,973,000	245,800,000	306,875,000

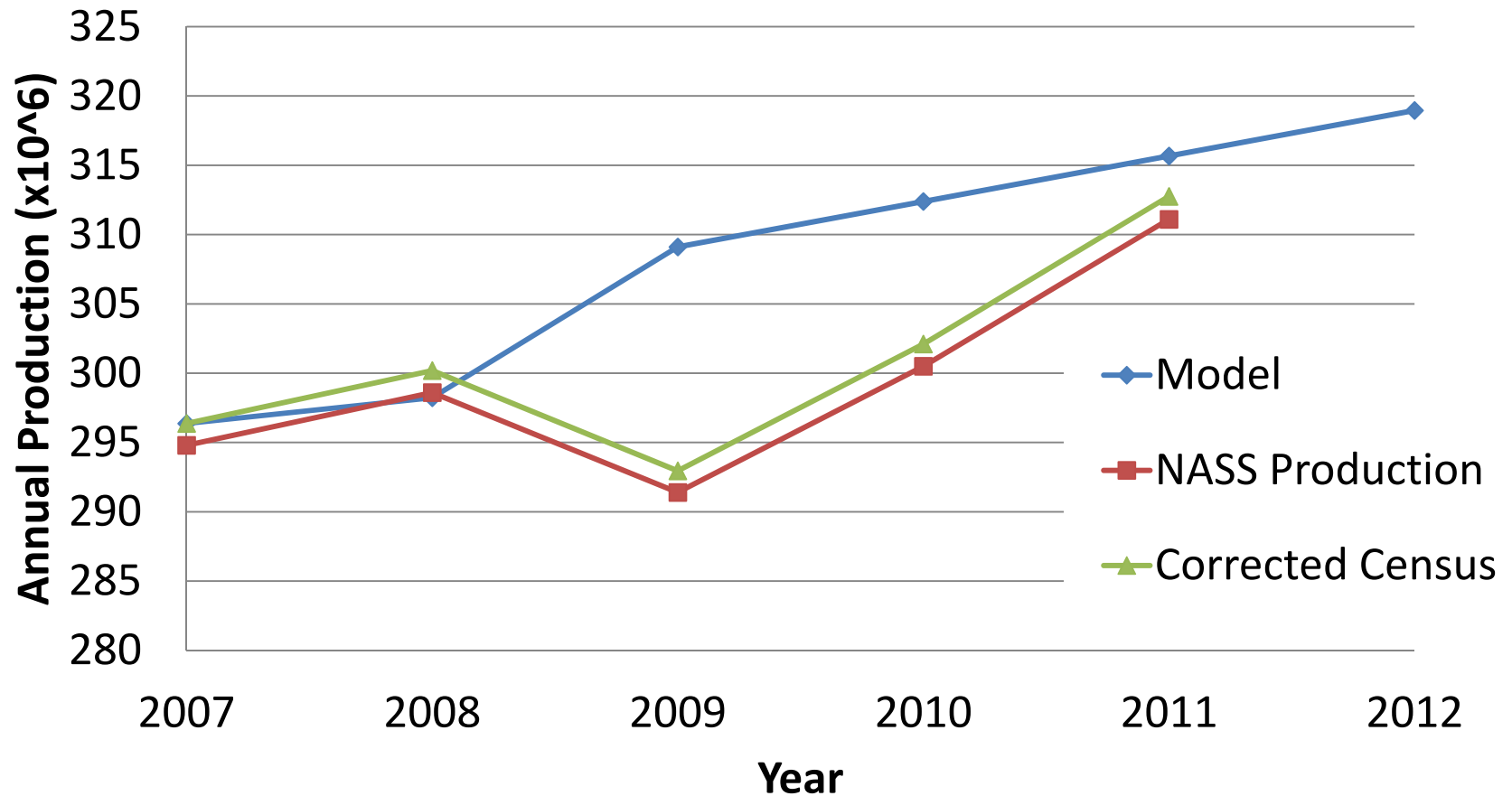
* Includes an early mortality factor

- NASS has recommended using the *Production* data.

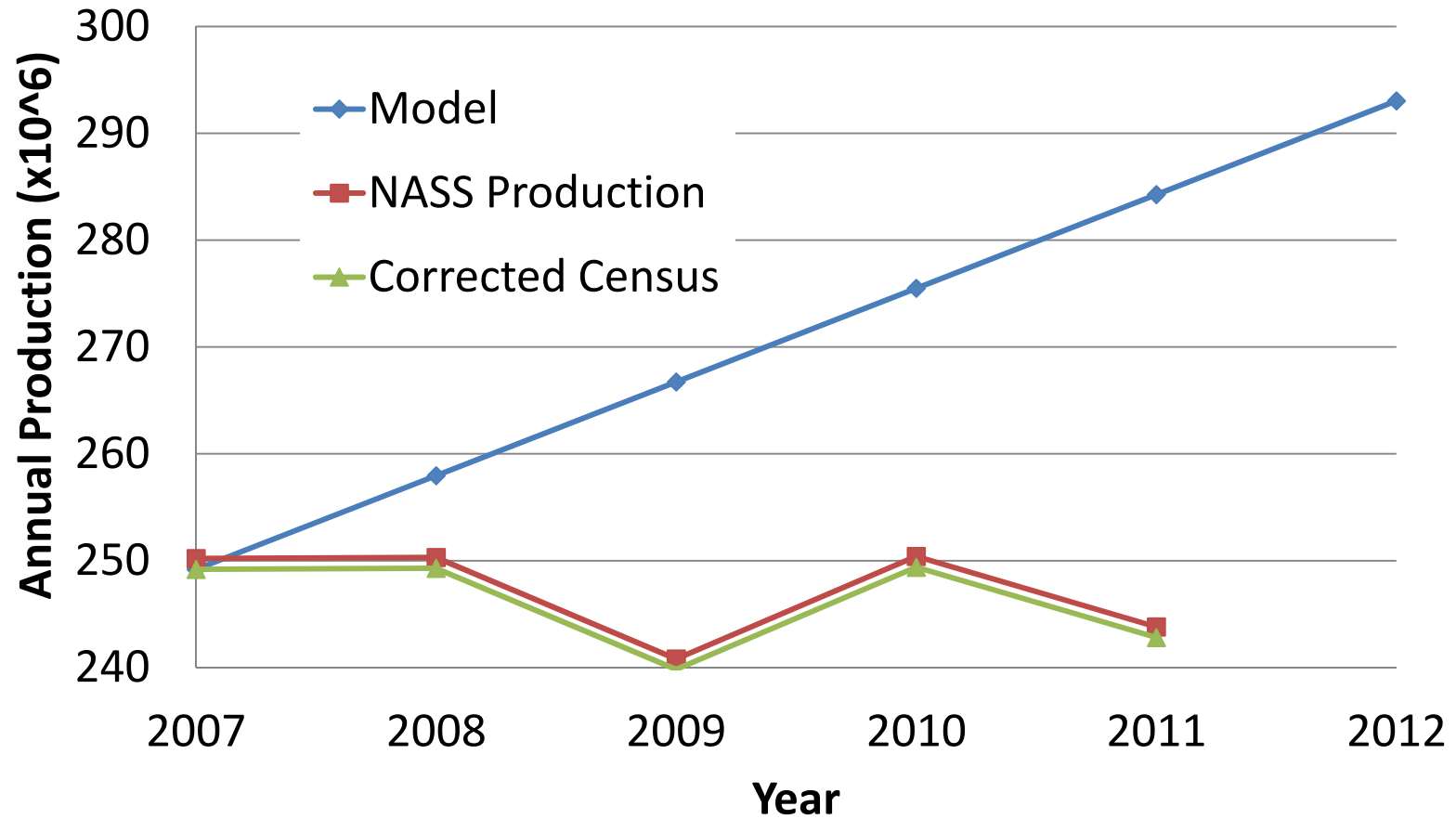
Delaware-Chickens



Maryland-Chickens



Virginia-Chickens



Status

- PLS to review current population estimation methods and make recommendations for improvements.
- Feedback from AgWG and others encouraged and appreciated.
- Conference call for the PLS being scheduled for the week of Aug 19th (thank you Emma!).
 - Review/approve final population estimate method.
 - Confirm final recommendations from the PLS.
 - Submit report as part of the phase 5 plan.

Questions?

Comments?