

Pilot Using Remote Sensing to ID Conservation Practices in the Chesapeake Bay Watershed

National Geospatial Center
Fort Worth, TX

Background

- The USDA Natural Resources Conservation Service (NRCS) proposes to facilitate the collection of conservation practices in Pennsylvania using remotely sensed data.
- Key elements
 - Imagery (focus on no cost sources)
 - Skilled Photo Interpreters
 - Facilitated Data Collection (GeoObserver)



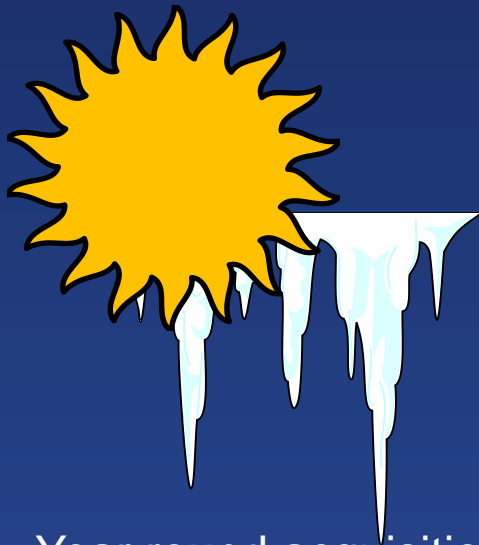
Favorable vantage point
& rich info source



Historical record

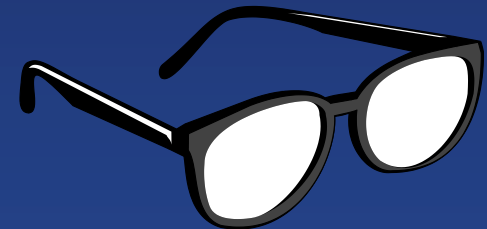


Economical



Year round acquisition &
up-to-date information

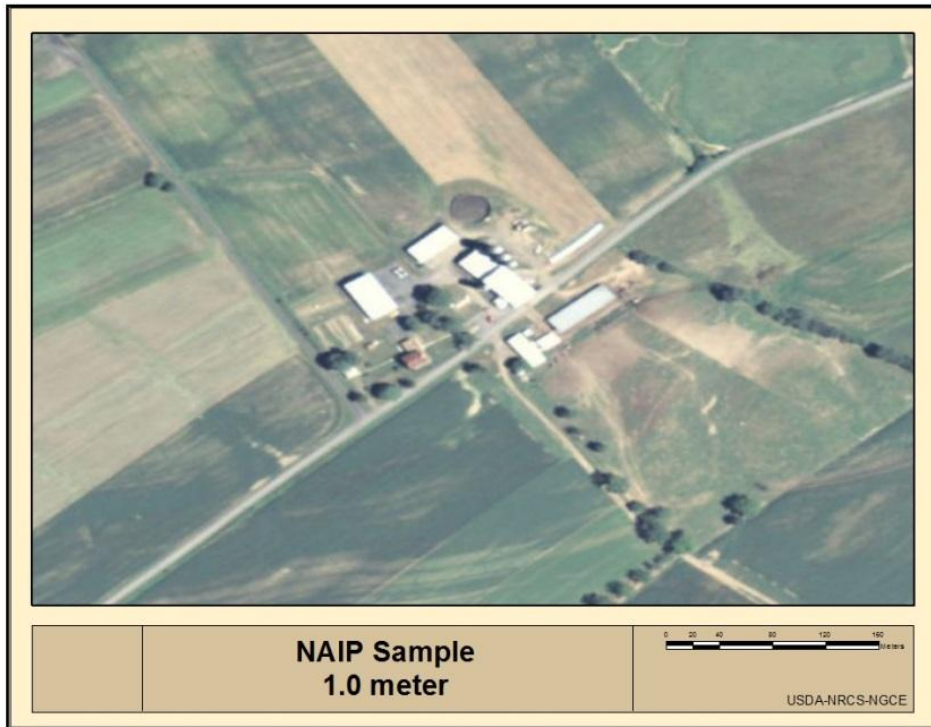
Sensing Advantages of Remote



Detect features not
visible to human eye

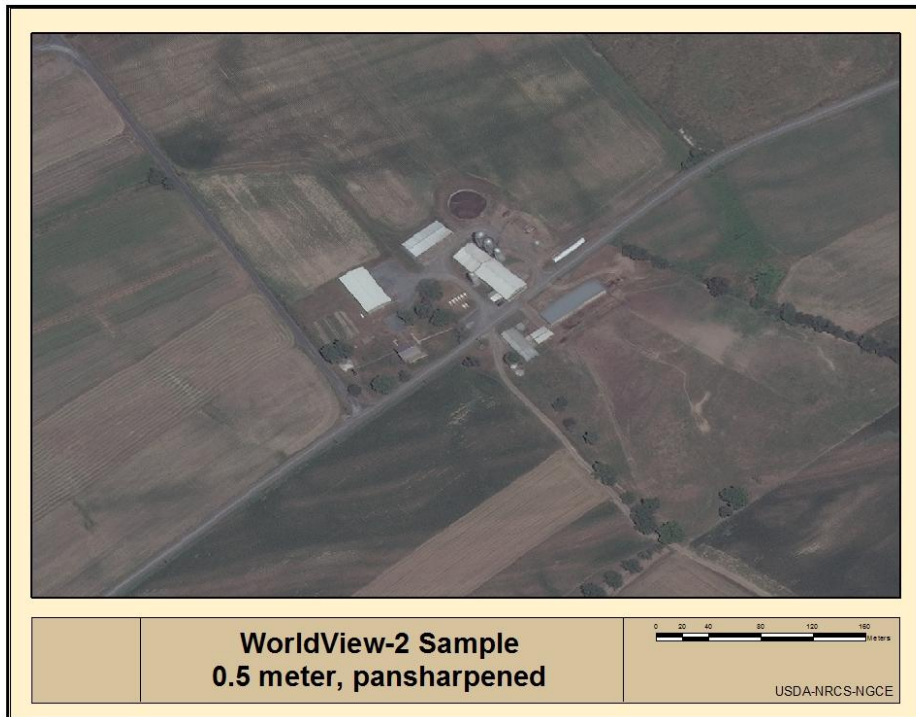
Imagery - Aerial

- PA flown in 2013 with 1-meter resolution 4-band NAIP



Imagery - Satellite

- DigitalGlobe announced an annual refresh of the US at 0.5 meter resolution.



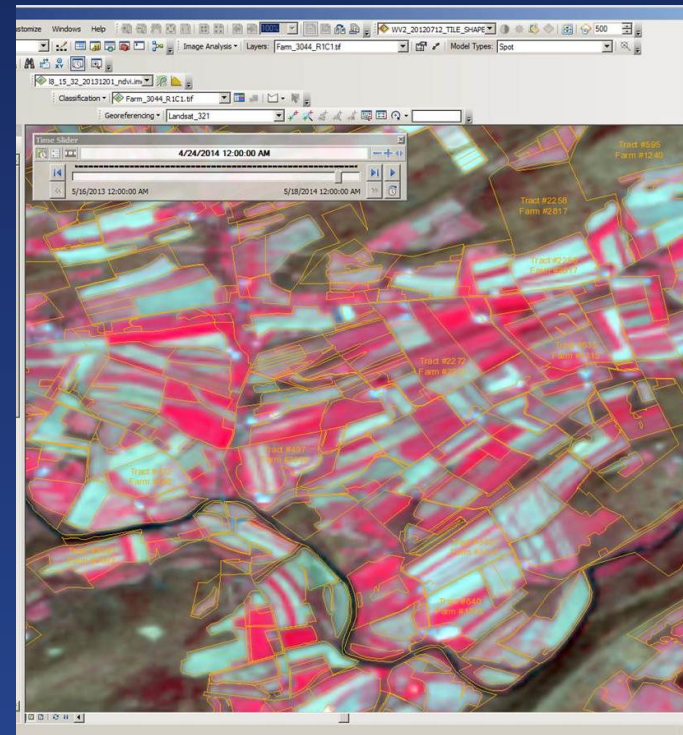
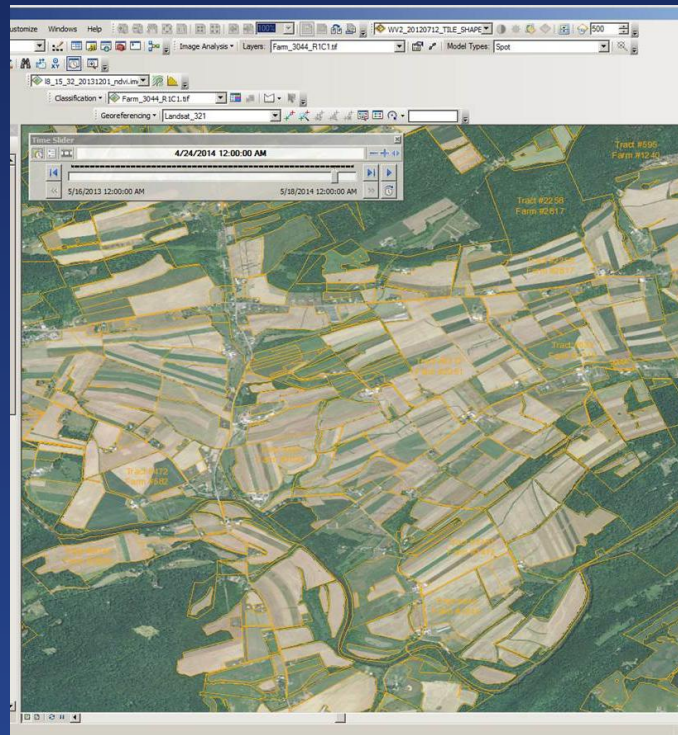
What can be interpreted?

- Alley Cropping
- Bedding
- Contour Buffer Strips
- Contour Farming
- Contour Orchards
- Cross-Wind Trap Strips
- Diversion
- Field Border
- Filter Strip
- Grassed Waterway
- Hedgerow Planting
- Herbaceous Wind Barriers
- Hillside Ditch
- Irrigation Tail water Recovery System
- Lined Waterway or Outlet
- Riparian Forest Buffer
- Strip-cropping (Contour, Cross Wind and Field)
- Surface Drainage
- Field Ditch
- Terrace
- Tree/shrub Establishment
- Vegetative Barrier
- Water and Sediment Control Basin
- ☐ Cover Crop

What can't be interpreted?

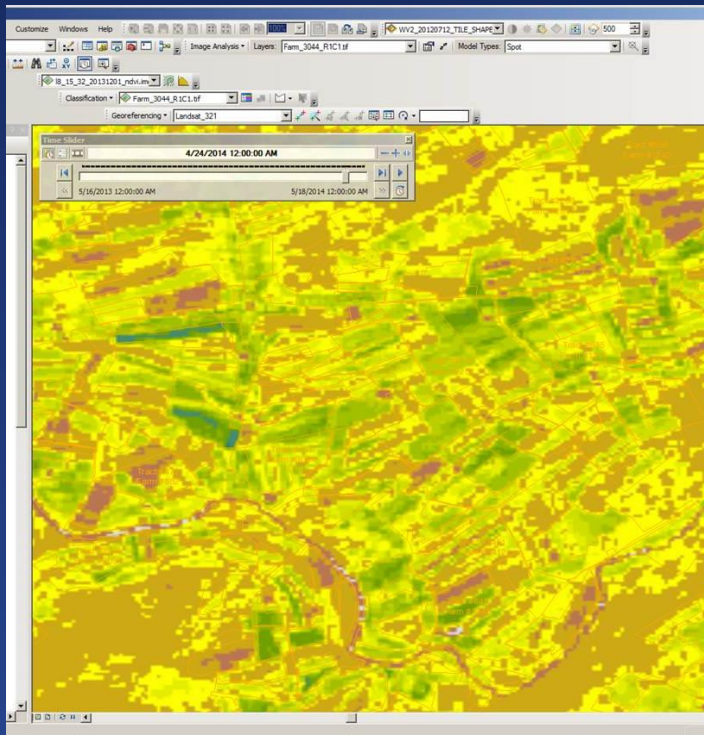
- Practices without a photographic expression.
 - Management decisions
 - Smaller than resolution of sensor

Cover Crop – Landsat 8



Perry County, PA – ESRI Landsat 8 Service

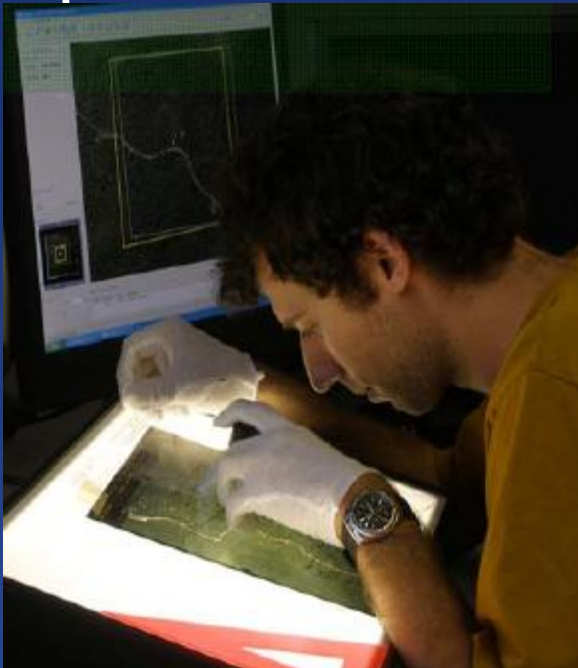
Normalized Difference Vegetation Index (NDVI)



- $(NIR - Red) / (NIR + Red)$
- Green is growing vegetation.
- Yellow and orange are bare or sparse vegetation.

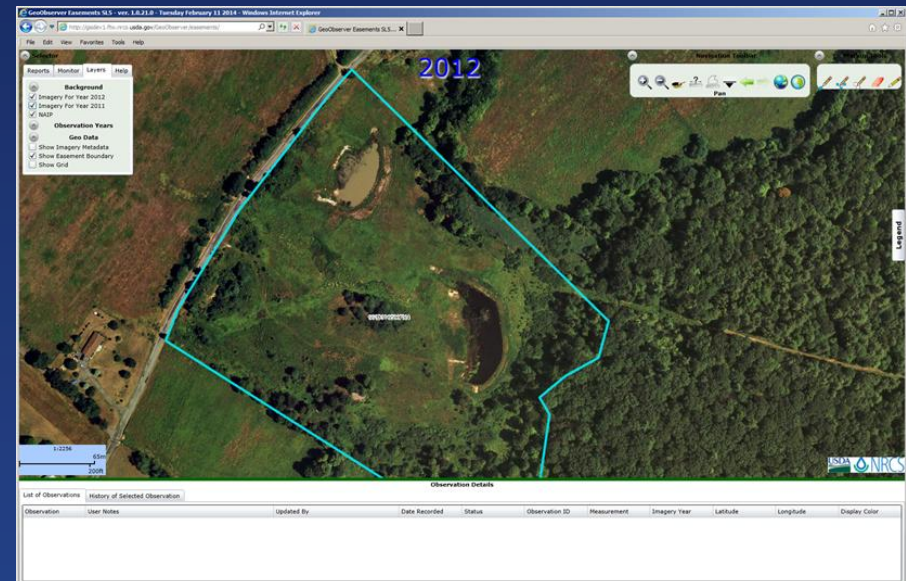
Photo Interpreters

- Quality of the data is directly related to the experience of the PI.
- Training
 - NRCS has an online course developed by Michigan State Univ.
 - PI's have to be certified to collect data.



Data Collection - GeoObserver

- Web tool developed by NRCS
- Tools to markup imagery
- Standard workflow
- Ability to generate reports



Summary

- Pieces in place
 - No cost aerial imagery
 - No cost satellite imagery
 - PI training
 - GeoObserver
- Needs
 - Is existing imagery adequate?
 - Skilled PI's
 - Repurposing of GeoObserver
 - Business requirements
 - Funding