

# Evaluation of Cover Crop Practices

Jack Meisinger, USDA-ARS & UMCP

Mark Dubin, University of Maryland

Emma Giese, Chesapeake Research Consortium

Mark Sievers & Kamran Zendehdel, Tetra Tech

# Panel Organization – Category Survey

## Categories: Areas of Expertise or Experience

1.) Academic: research and monitoring expertise

2.) Program: federal and state program implementation, tracking and reporting

3.) Modeling: modeling simulation expertise.

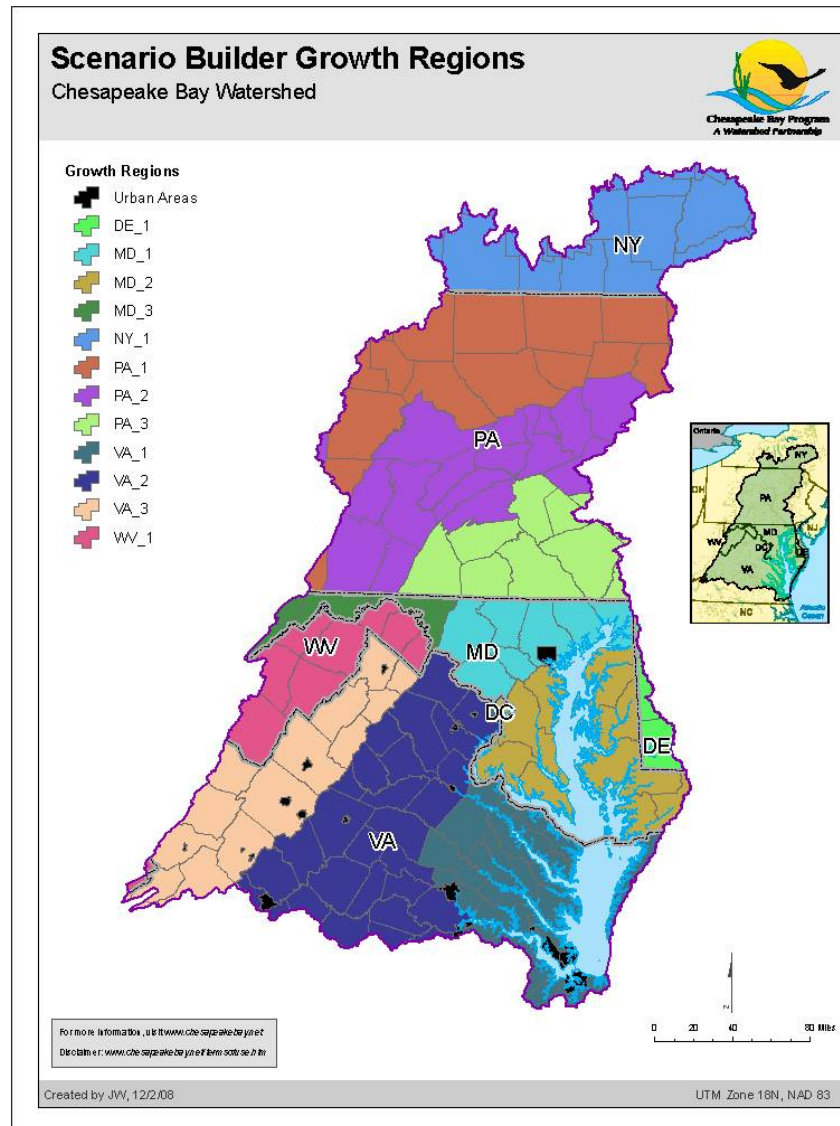
Panelist	Academic	Program	Modeling
Andy Clark, SARE	X	X	
Barbara Elliott, W Va Agr.		X	
Charlie White, PA St.	X		X
Chris Lawrence, NRCS VA	X	X	
Dean Hively, USGS	X	X	
Patricia Brown, NRCS WVa	X	X	
Jack Meisinger (Chair), ARS	X		
Jamie Ulrich, PA Agr.		X	
Ken Staver, Univ MD Wye	X		X
Mark Goodson, NRCS PA			
Paul Salon, NRCS NY	X		
Quirine Ketterings, Cornell	X		
Ray Weil, Univ MD CP	X		
<b>Robert Baldwin , DE DNRC</b>		<b>X</b>	
Ron Hoover, PA St.	X	X	
<b>Sjoerd Duiker, PA St.</b>	<b>X</b>		
Royden Powell, MDA			
Tim Sexton (?), VA DNR		X	X
Wade Thomason, VA Tech	X		

# State of the Cover Crop Panel – Activities

## Activities

- Interview Summary Report, 98% complete, in final review, due April 2013
- Using Scenario Builder (SB) Growth Regions as basis for aggregating data

# Scenario Builder Growth Regions



# State of the Cover Crop Panel – Activities

## Activities

- Interview Summary Report, 98% complete, in final review, due April 2013
- Using Scenario Builder (SB) Growth Regions as basis for aggregating data
- Four conference calls held to discuss:
  - Bay Model Review, SB Review, Review Efficiency Estimation, & Growth Region Sign-up
- Currently determining which Cover Crops to tentatively include:
  - Rye, Wheat, Barley, Triticale, Forage Radish, and Grass-legume mixtures
- Traditional Cover Crops will be Considered First
- Rye will be used in all SB Growth Regions, as an External Quality Control
- Commodity Covers Considered after Collaborations with Nutrient Mgt. Panel
- Modeling Post-doc Position Planned for APEX runs for sediment, P, maybe N

# Timeline for Deliverables

## Spring, 2013

- Literature review and draft Efficiency Estimates for Traditional Covers
- Confer with Nutrient Management Panel on Commodity Cover Crops

## Summer, 2013

- Finalize Efficiency Estimates for Traditional Covers (meet face-to-face)
- Finalize Commodity Cover Crop Efficiency/NM parameters

## Fall, 2013

- Produce Draft Report for Ag WG Oct 1, 2013