

Census of Agriculture, Chesapeake Bay Watershed Modeling Uses and Trends

Joseph Delesantro, ORISE Fellow, CBPO, EPA

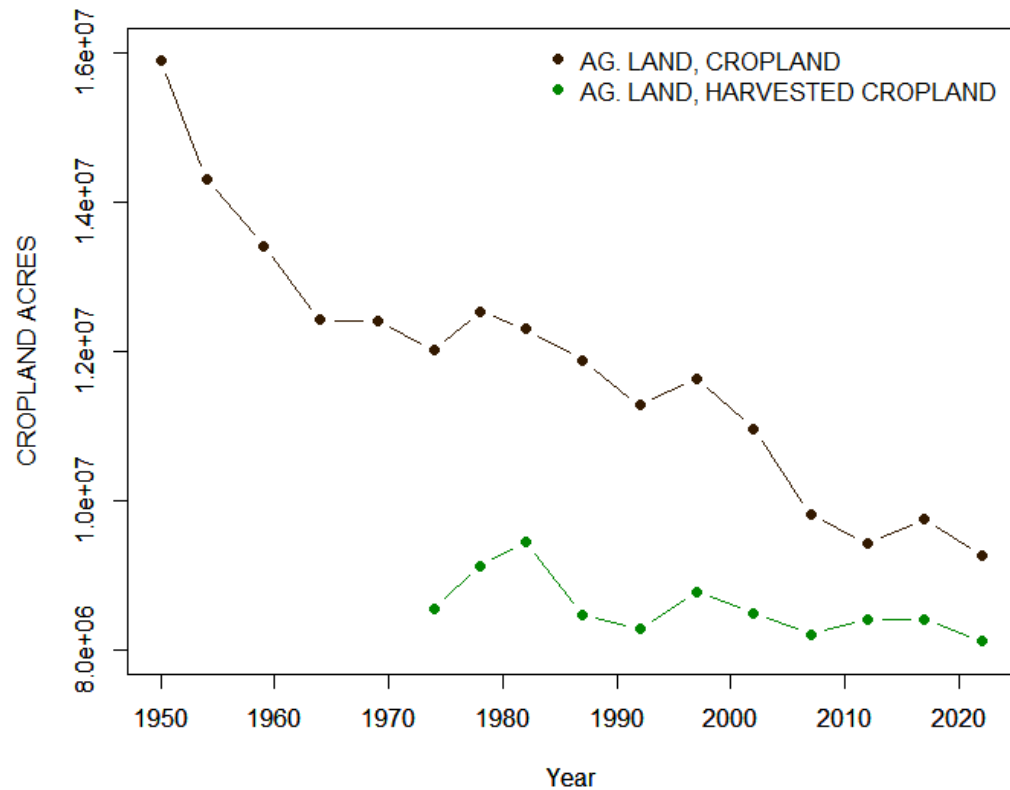
jdelesantro@chesapeakebay.net

Census of Agriculture (COA) in CAST

- Informs agricultural land-uses
 - Geospatial data provides broad land-uses and COA is used to subdivide into finer uses at county scale
- Informs agricultural inputs
 - 100+ crop and pasture types
 - 20 livestock categories

In total we use over 200 values (data items) from the COA at the county and state scale.

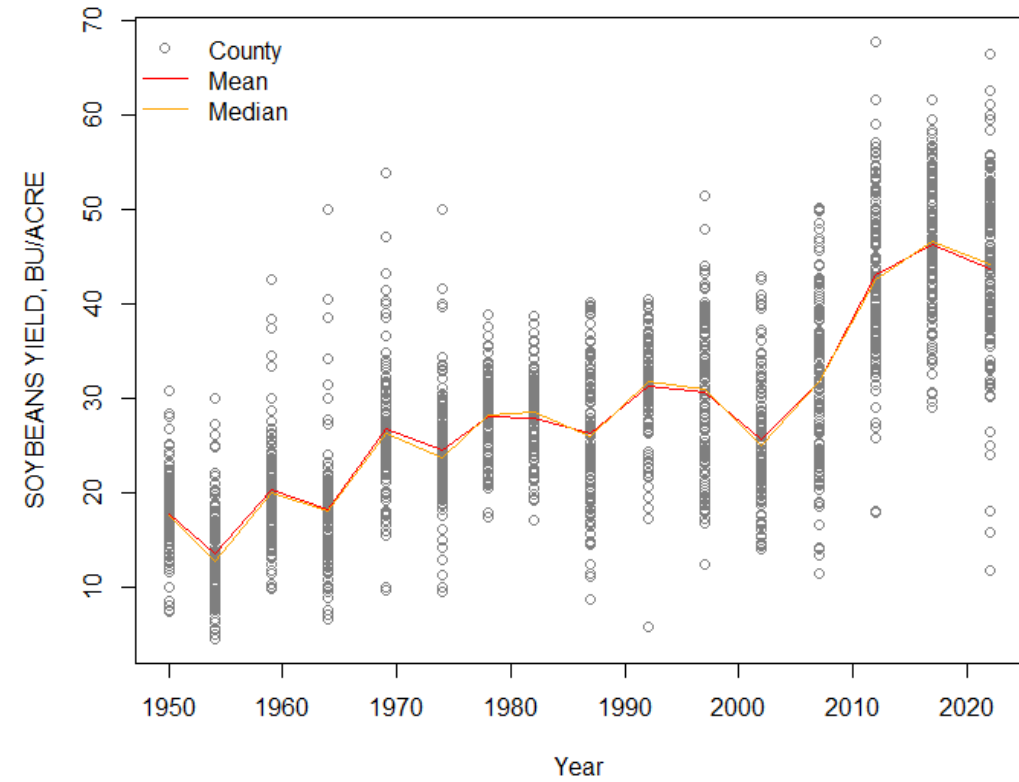
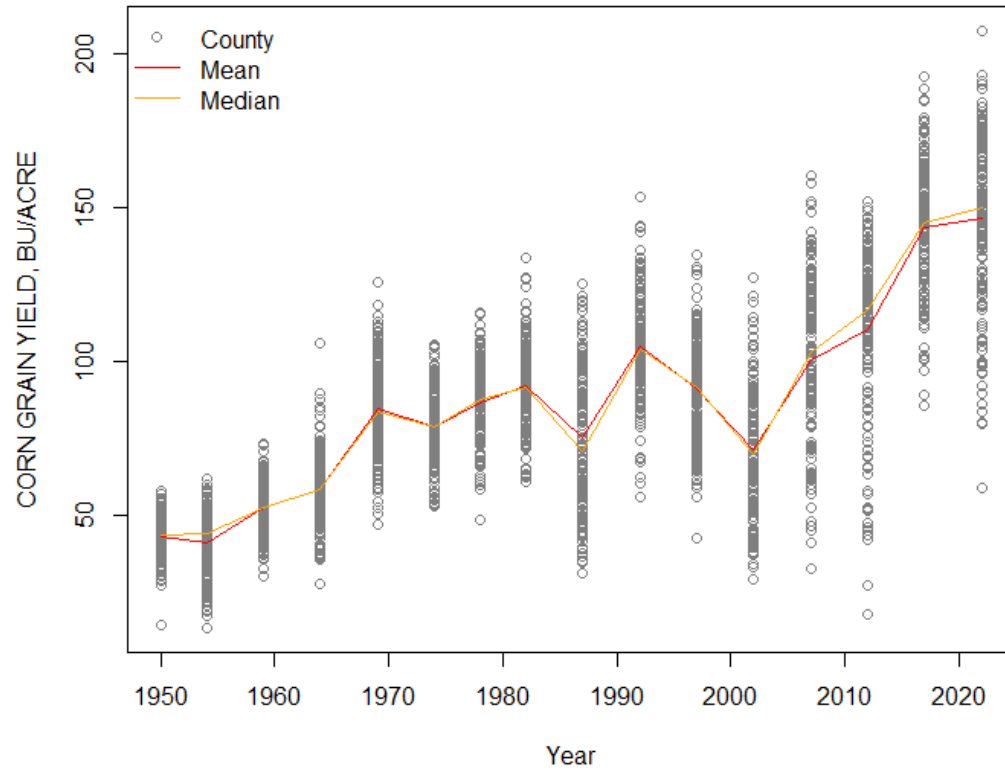
Crop Acres



RAW DATA

- New lows for both cropland and harvested cropland in the CBW
- 88% of cropland harvested in 2022, vs 71% in 1974

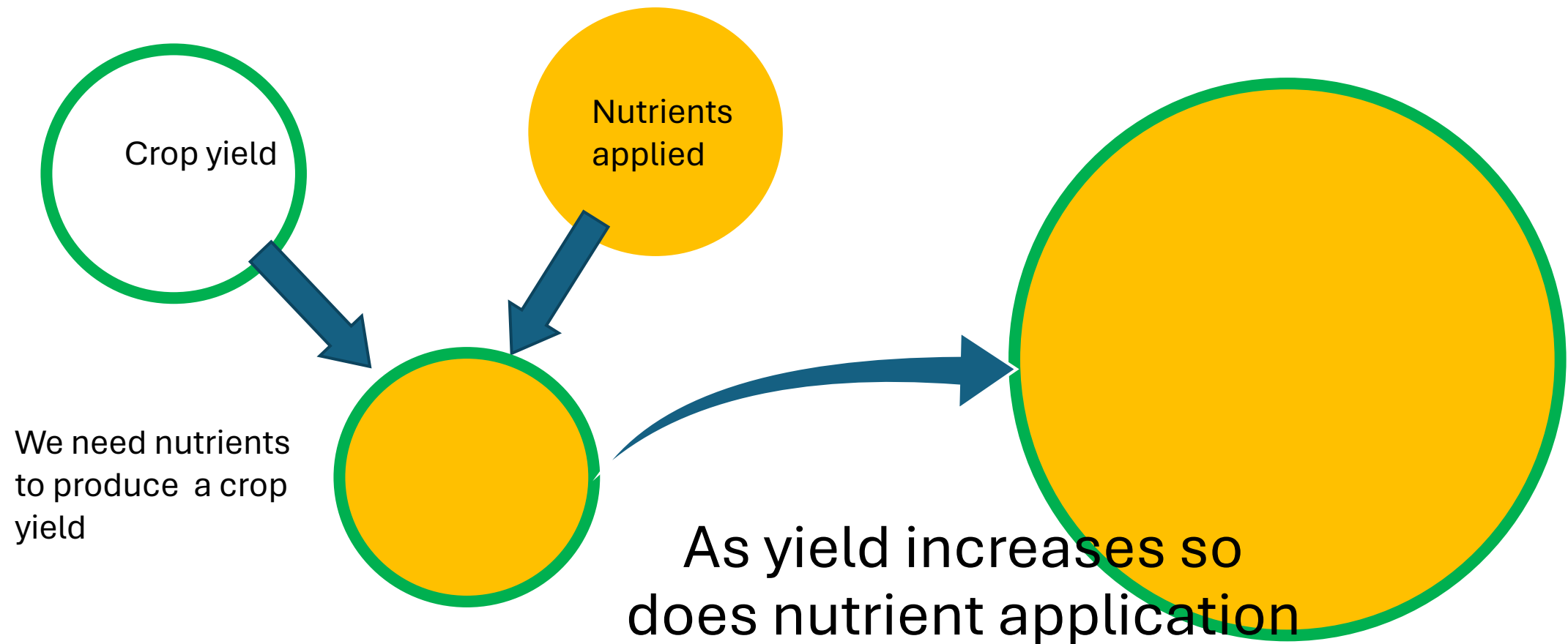
Crop Yields Increasing



RAW DATA

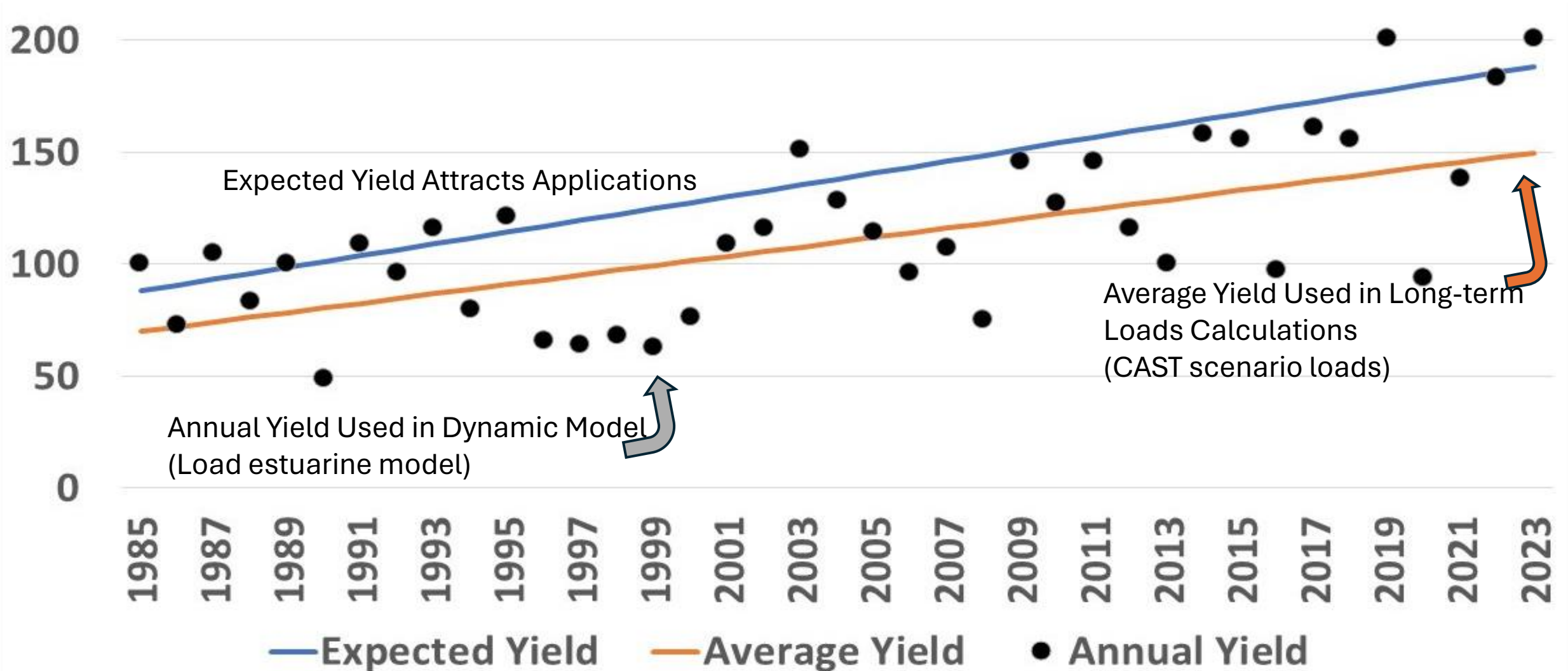
Crop Yields Inform Estimated Nutrient Demand

- Yields and nutrient applications are tied together

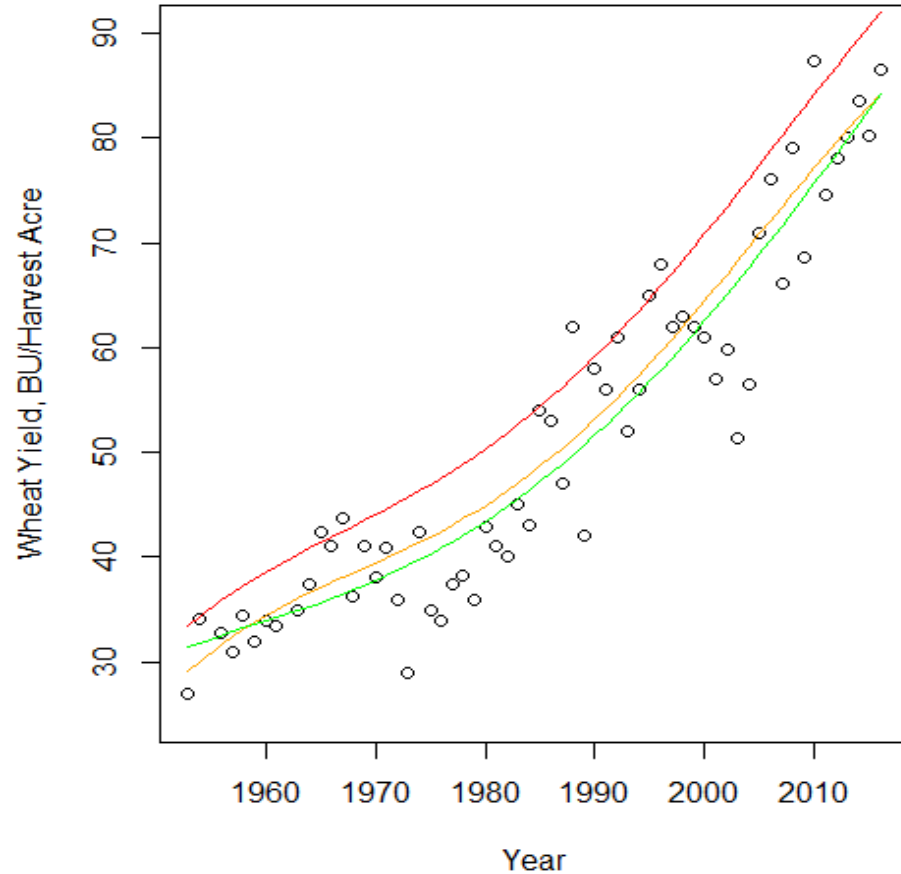


Crop Yields

*EXAMPLE
DATA ONLY



Crop Yields

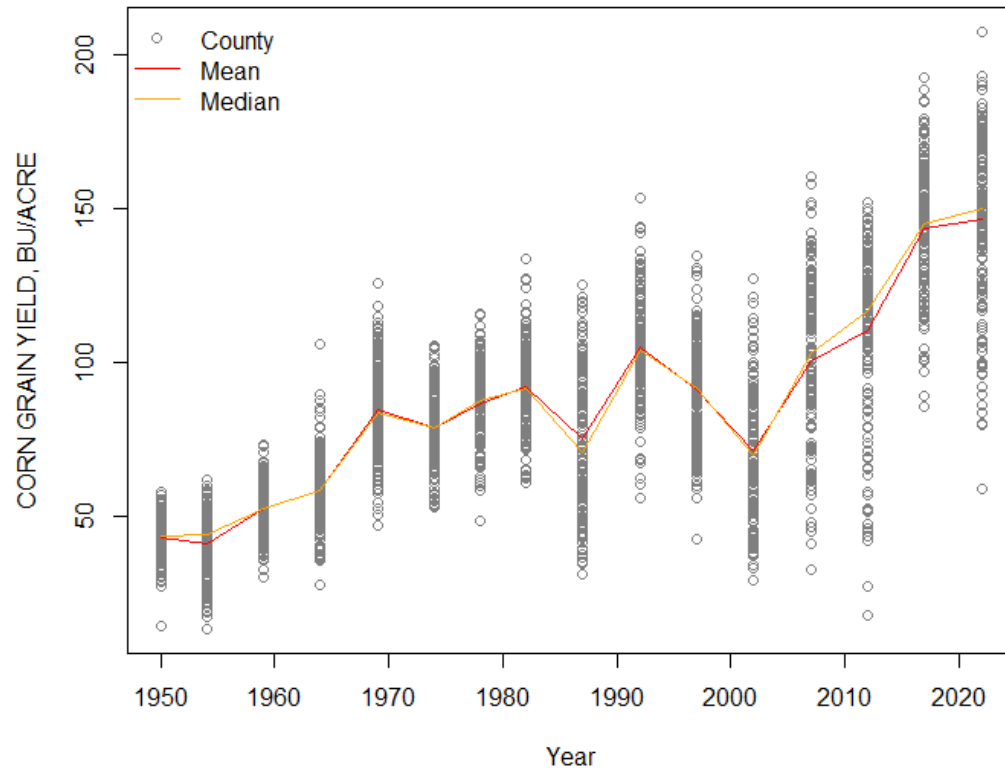


Extended data record to 1950:

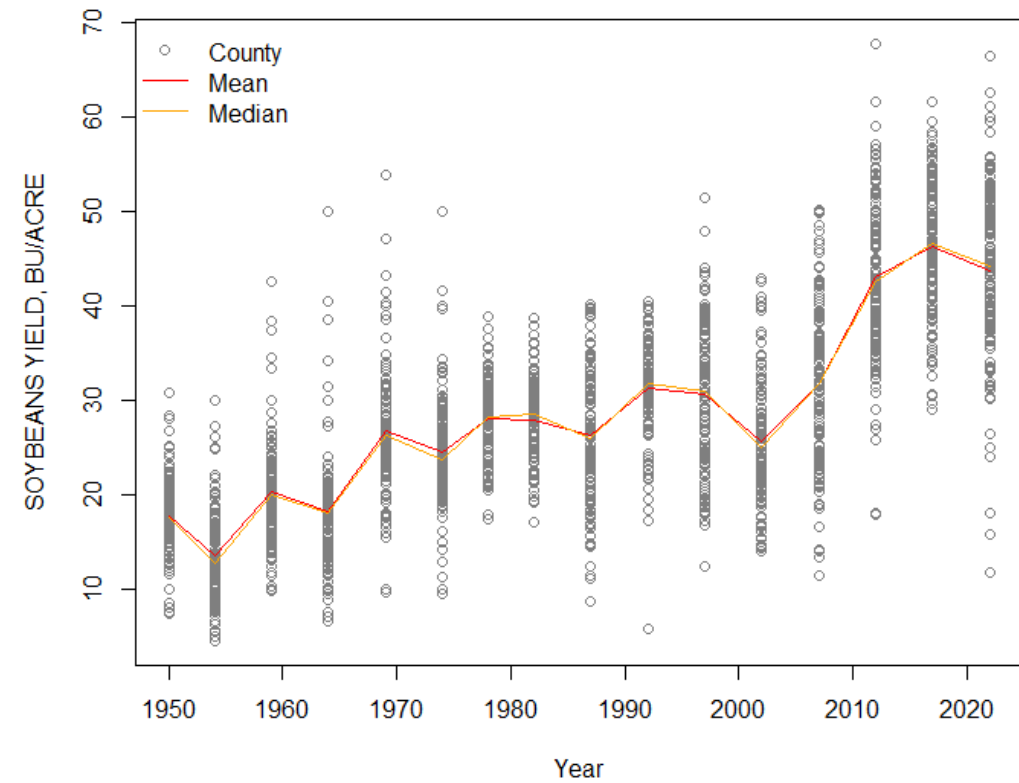
- Improve trend analyses
- Provide better estimates of weather independent inputs
- Better interpolation of missing data
- Opportunities to account for legacy inputs

Crop Yields

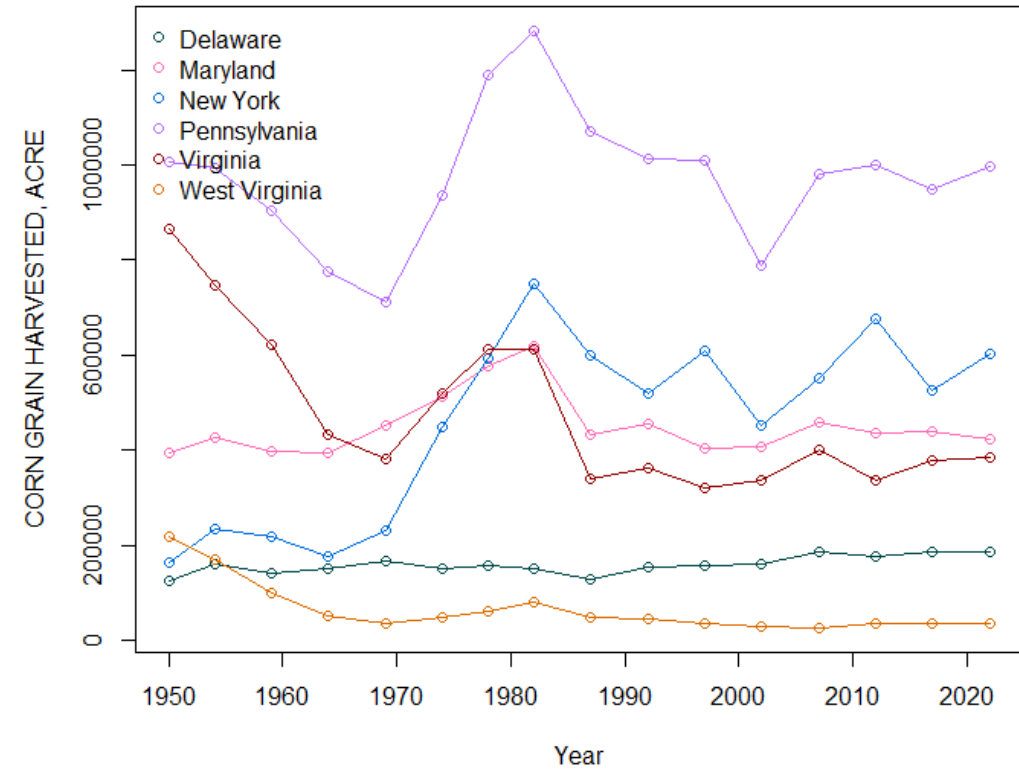
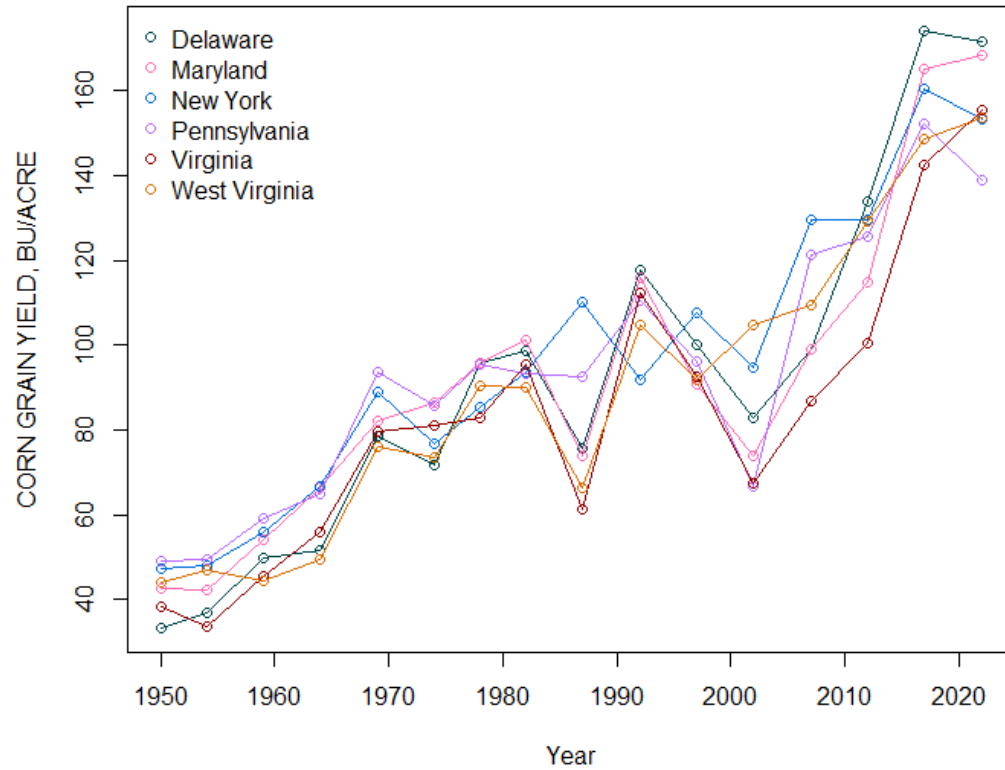
- Dramatic increases in most crop yields over the last 70 years
- But little change from 2017



RAW DATA

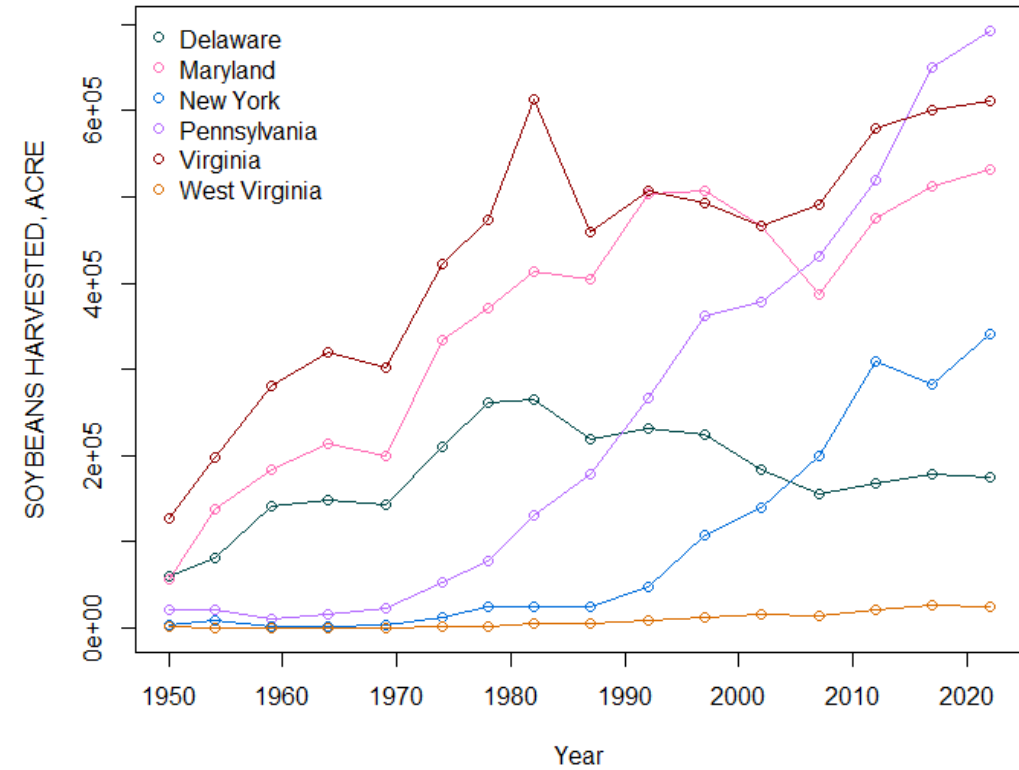
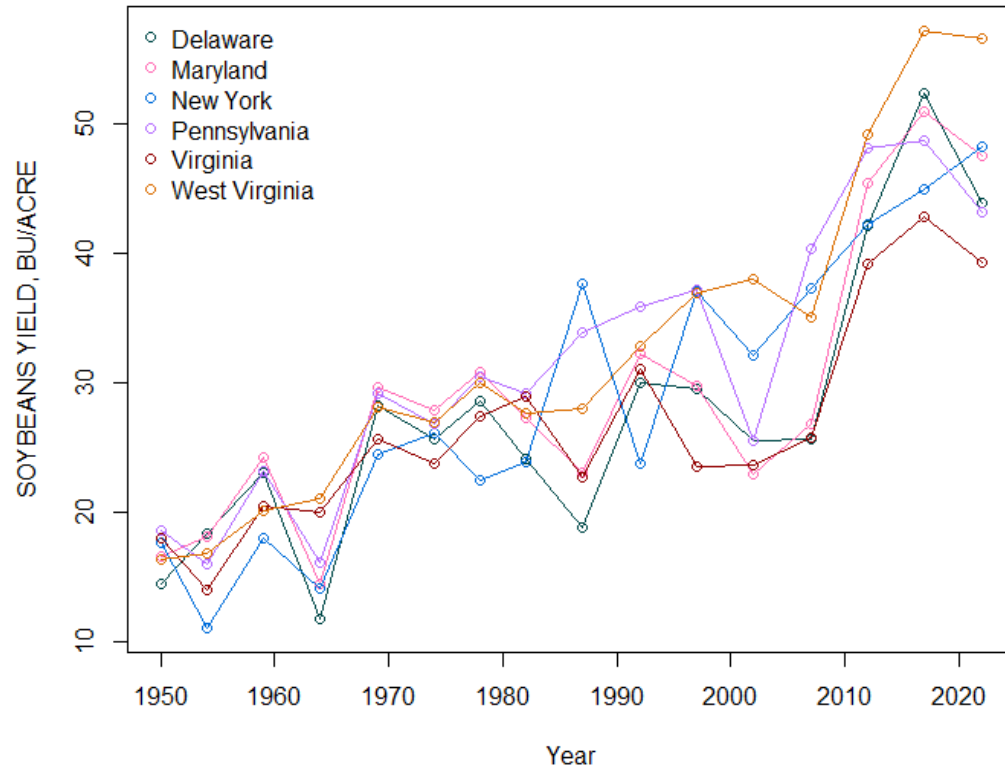


Corn Yields and Acres by State



RAW DATA

Soybean Yields and Acres by State



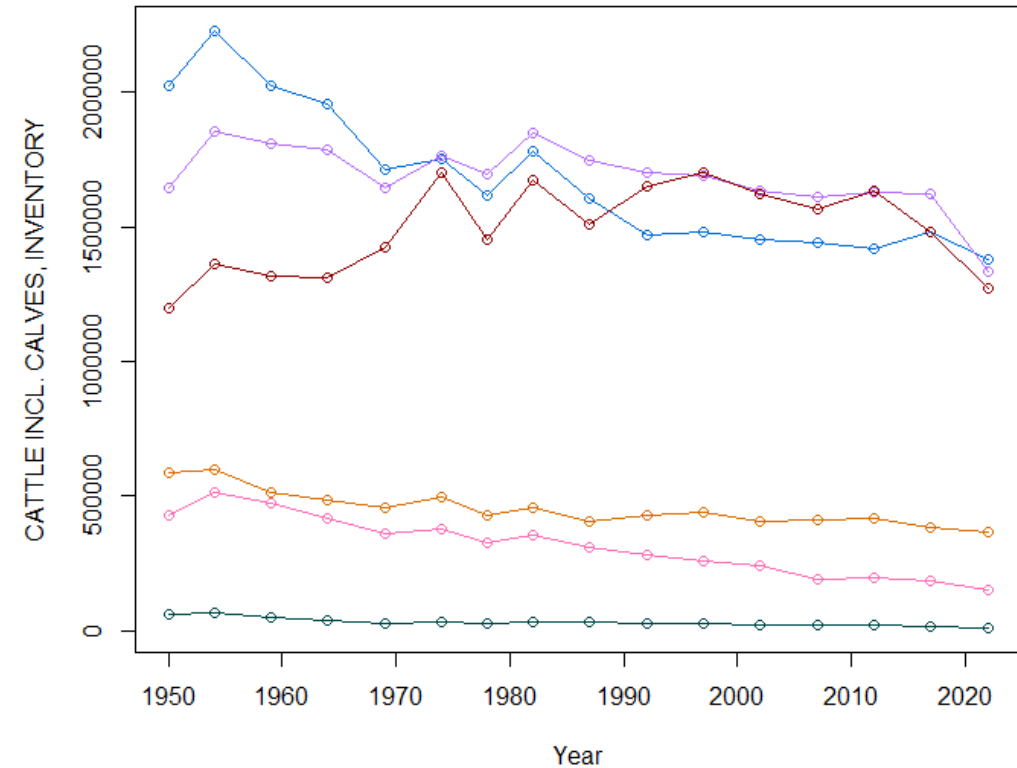
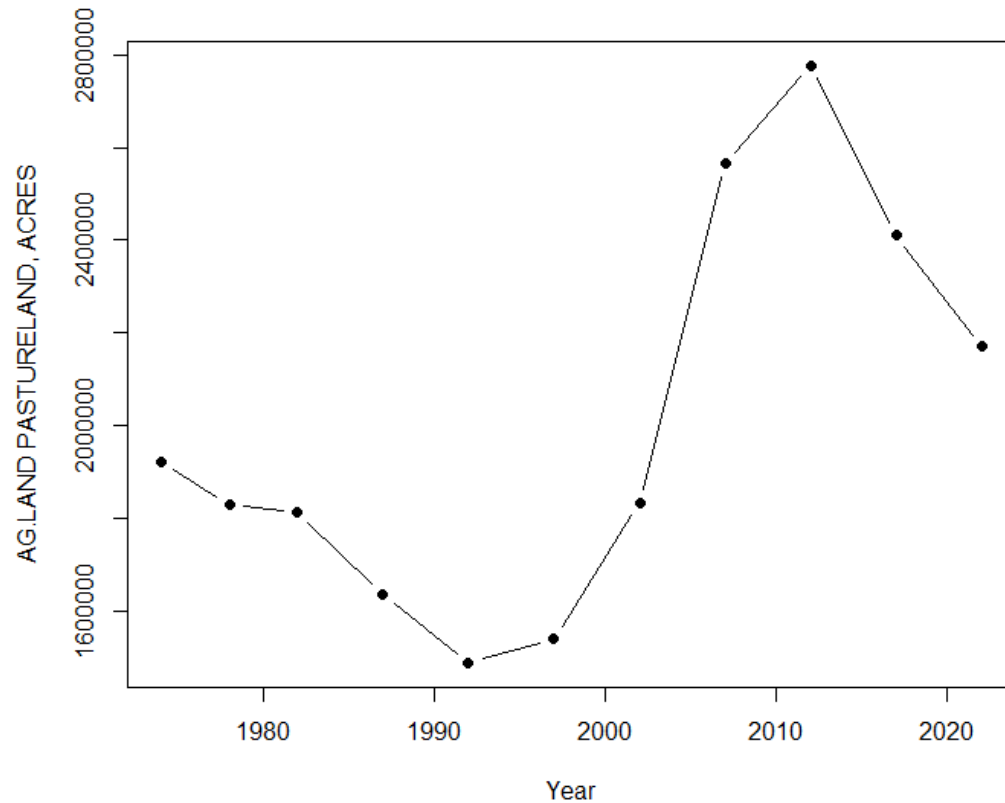
RAW DATA

Animal Number Inform Manure Estimates

- Animal numbers by county inform estimates of manure generation
- The proportion of different animals in the county inform estimates of manure N and P content and availability

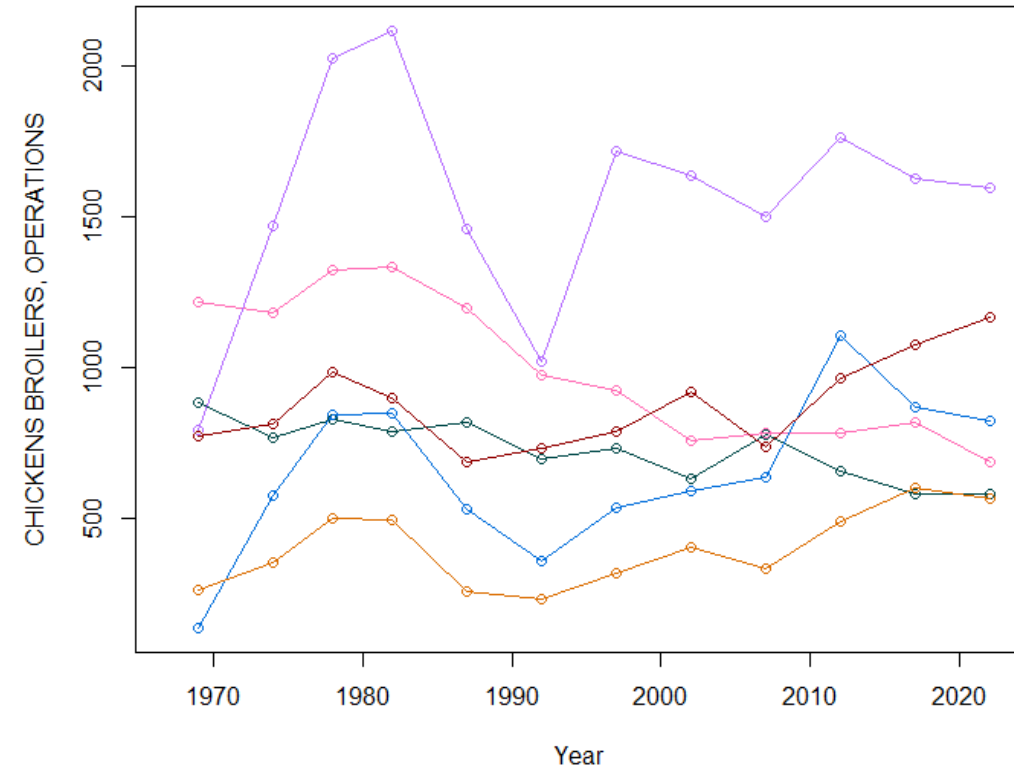
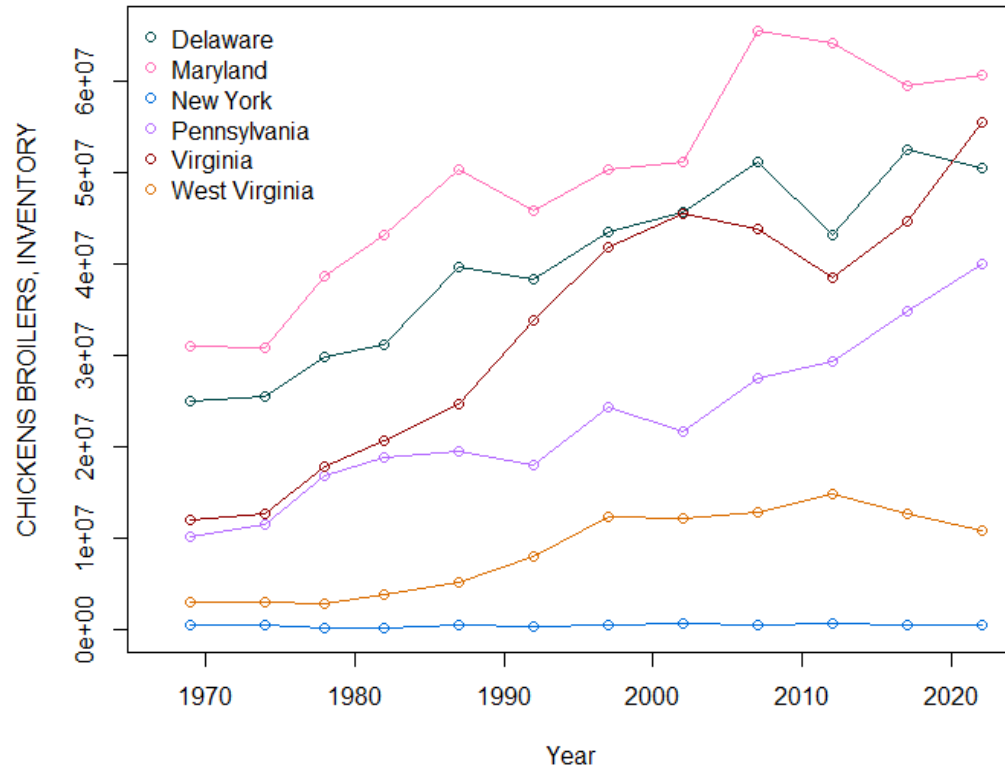
Pasture Acres and Cattle

- Pasture acres down from 2017
- Decrease in cattle inventory across all states from 2017 to 2022



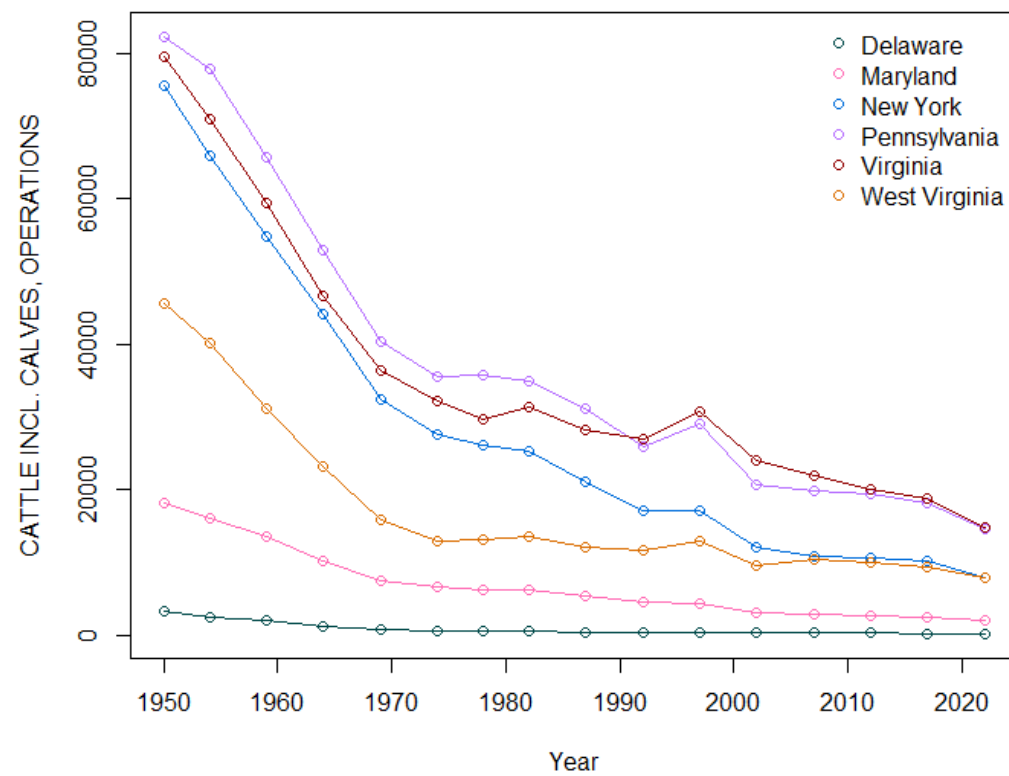
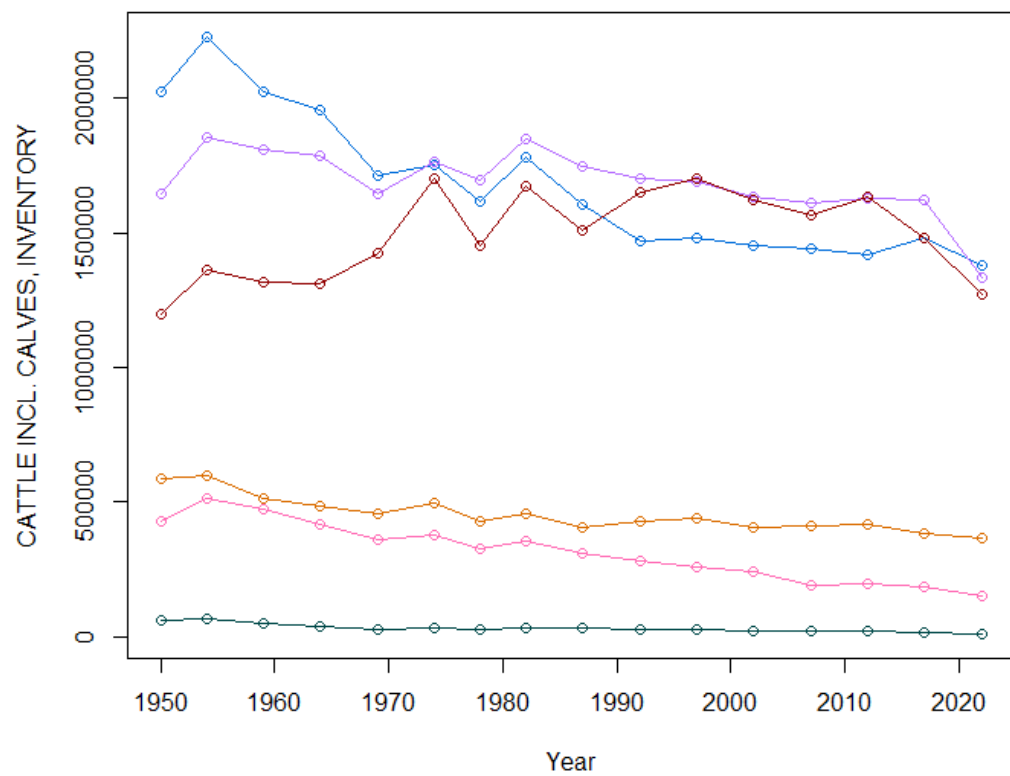
RAW DATA

Broilers Inventory and Operations by State



RAW DATA

Questions



RAW DATA