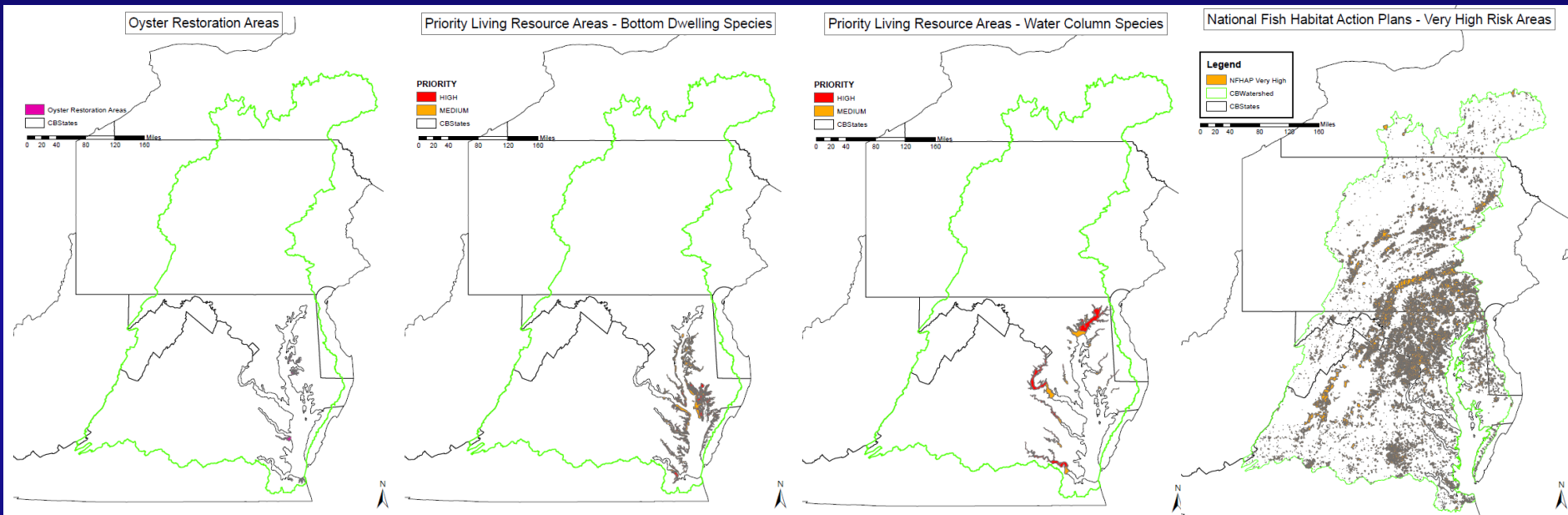
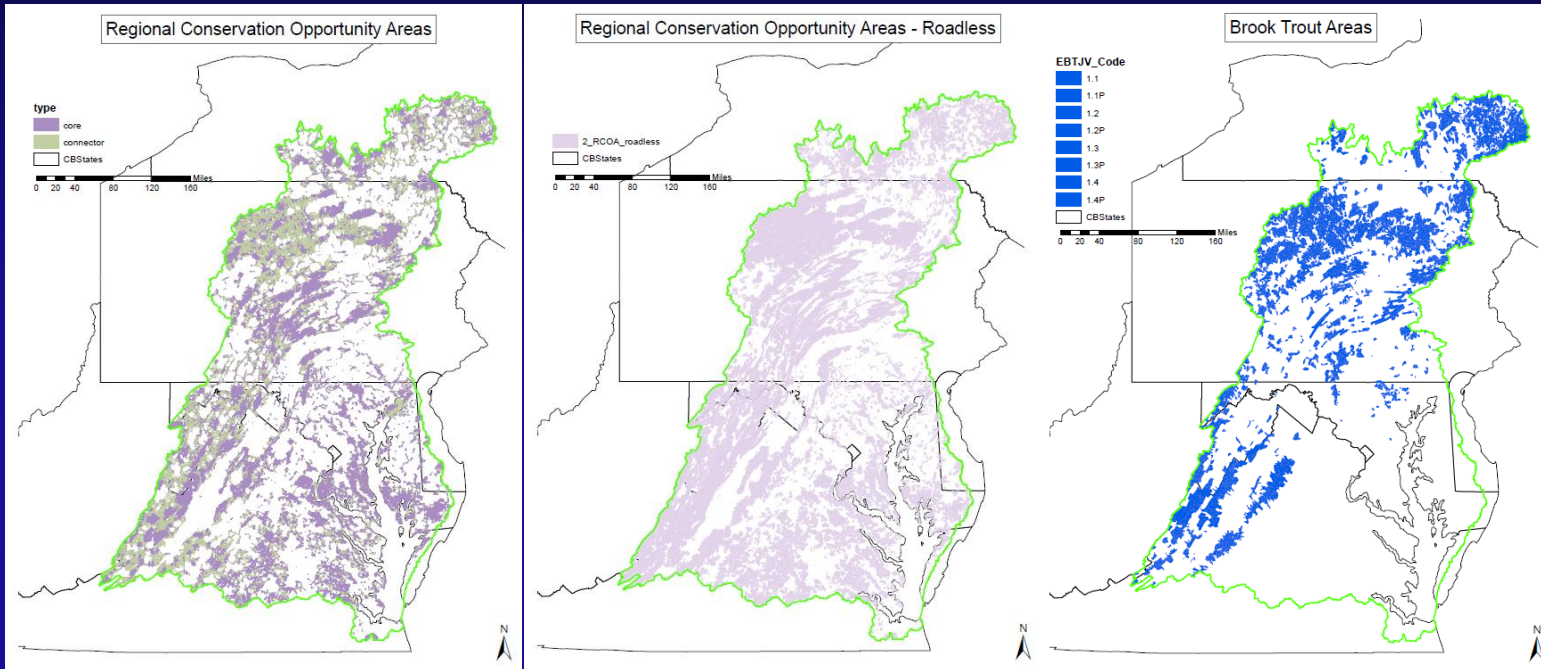


GIT 1

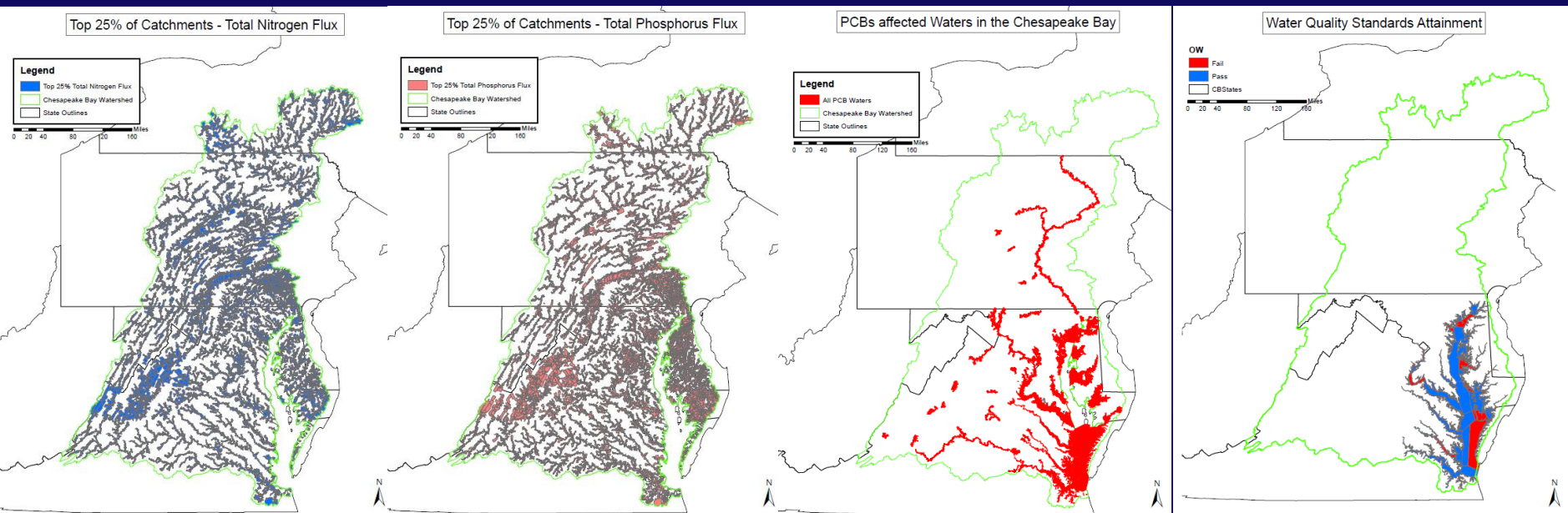


Git 2

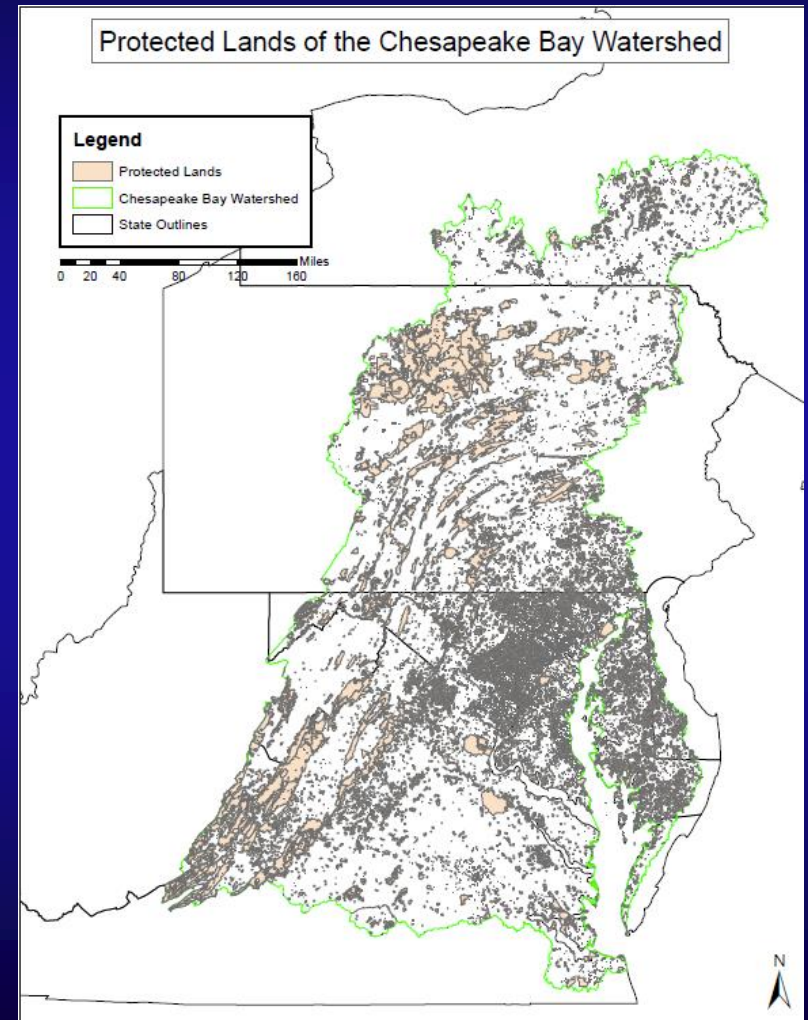
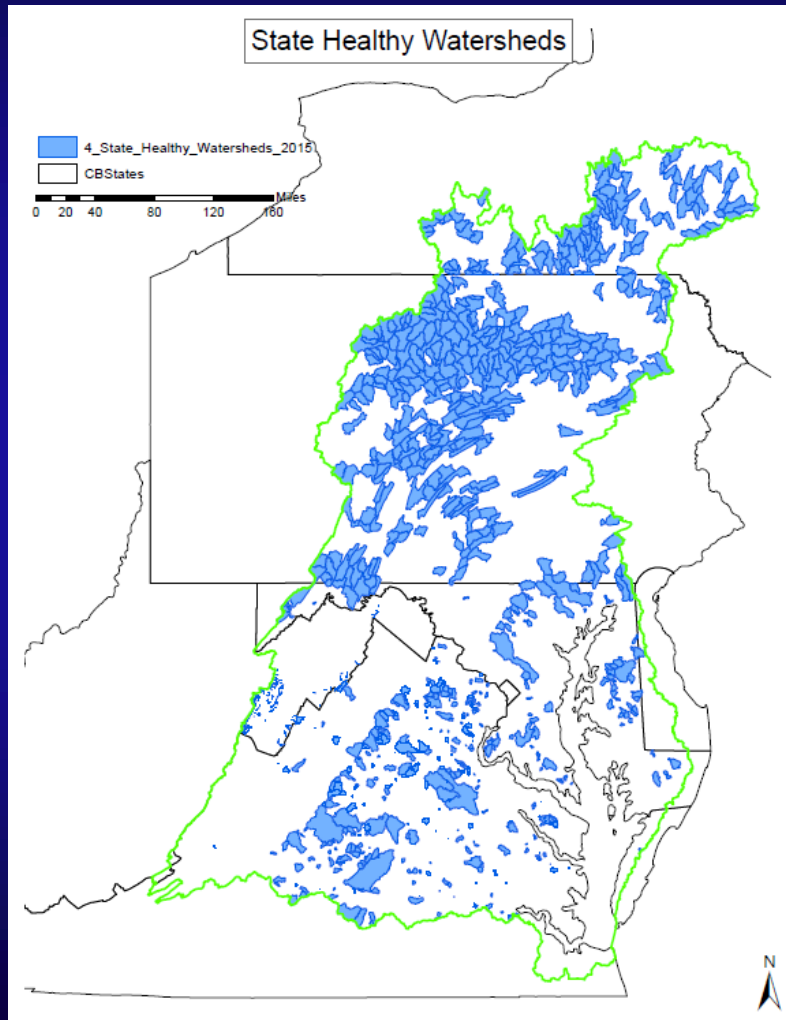


Black Duck Coming soon.

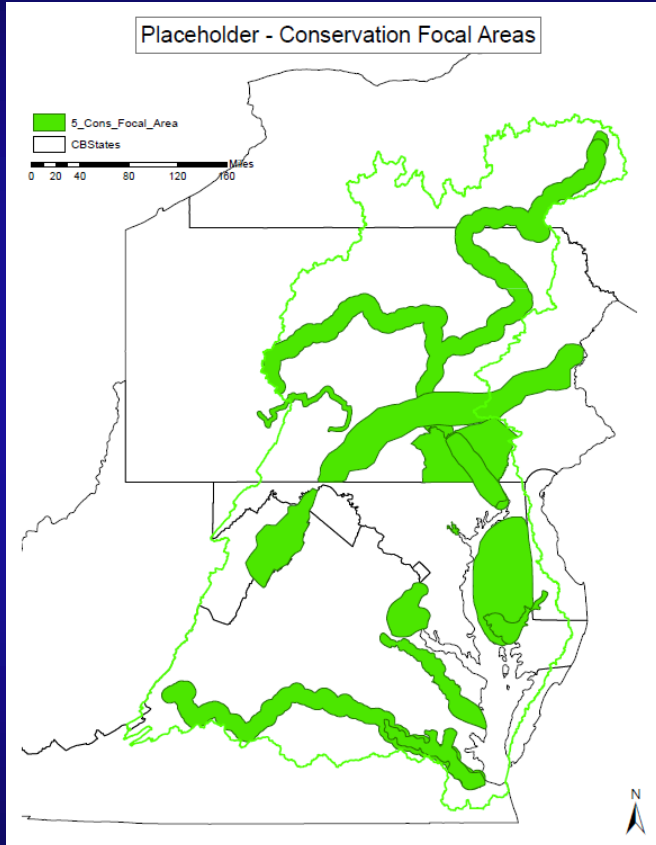
GIT 3



GIT 4



GIT 5



Waiting on Land Protection Priority Layer from Chesapeake Conservation Partnership

Public Access – Currently Have Point Locations. Need to decision rule to incorporate

Scrape from Protected Lands dataset where polygons intersect points?

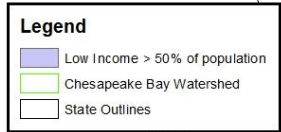
Will this be replaced by Ches Conservation Partnership “Health Goal”?

Climate

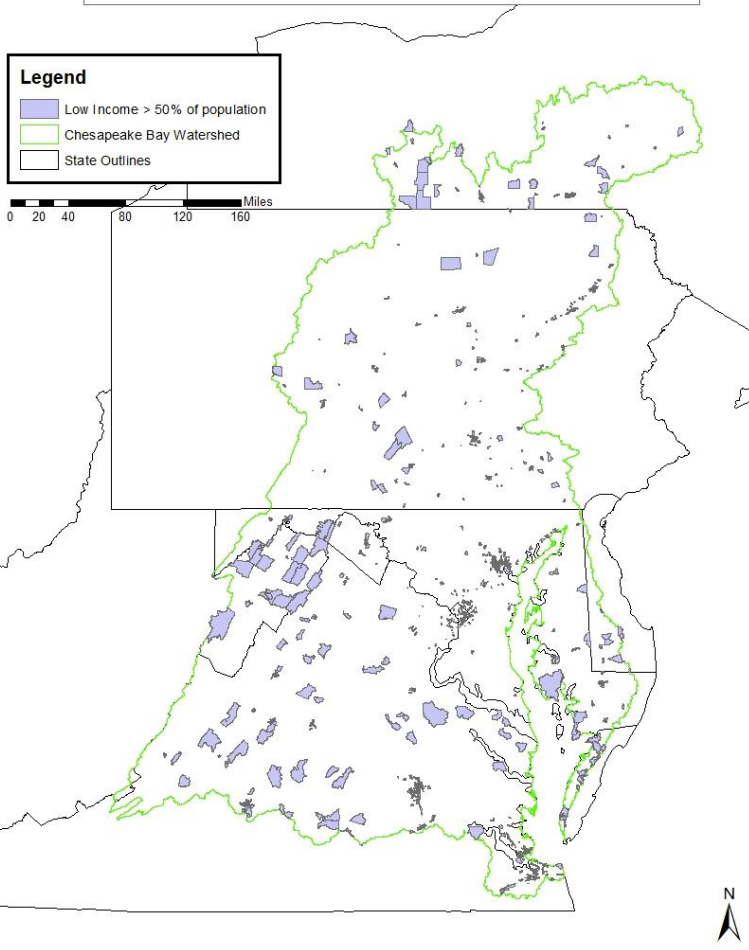
- Have NOAA sea level rise areas – which scenario to include?
- 100 year flood plain - Emails sent to Dan Jones and Greg Noe
- Flood Hazard Risk – Data incoming
- Wetland Adaptation – Data incoming from VA and MD

Diversity

Census Blocks with >50% Low Income Households



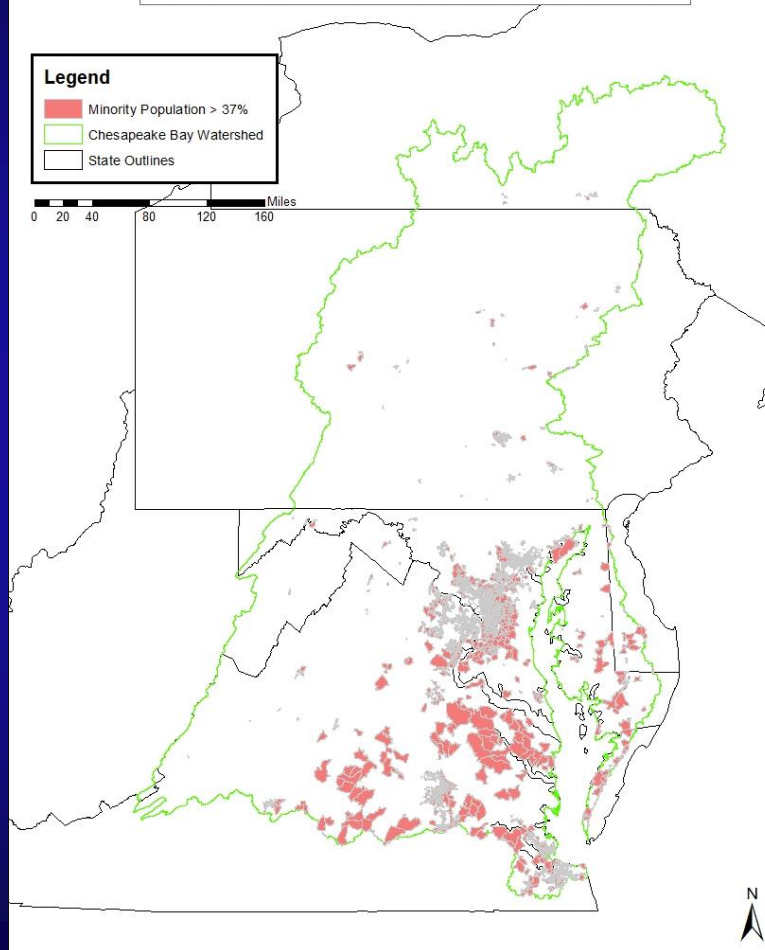
0 20 40 80 120 160 Miles



Census Blocks with >37% Minority Population



0 20 40 80 120 160 Miles



Will Add
combination
layer of
Proximity to:

Hazardous
Waste

RMP

SuperFund
Sites

Land Change

- **Waiting for Vulnerability data from CB Land Change Model**

Further Layers to add in the Future

- Environmental Literacy – plot education efforts vs household income vs impairment data
- Others?