

# Land Use/Land Cover Tree Canopy Planned Updates

Sarah McDonald (she/her), Geographer, U.S. Geological Survey

Lower Mississippi Gulf Water Science Center

Forestry Work Group Meeting  
August 2, 2023

# Decision History for 2024 Ed. Land Use/Land Cover Mapping

- December 2022 – Joint FWG and LUWG Meeting
  - Restrict Tree Canopy over Turf Grass (TCTG) buffers to parcel boundaries.
  - Restrict Tree Canopy over Turf Grass (TCTG) buffers to 10-meters in all landscapes.
  - Turf Grass can transition to Tree Canopy, Other and should not be forced to transition to TCTG.
  - Forest patch metrics should reduce the diameter to 36-meters (120-feet) and remain at 1-acre minimum area.
  - Long, narrow Tree Canopy features (like windbreaks) should not be considered forest.
  - Add harvested forest wetland classes.
- January 2023 – FWG Meeting
  - Do not distinguish between evergreen and deciduous in this edition of mapping.
    - Do not further expand the classification to include this distinction. Could be useful as overlays.
    - Would be useful for VA hardwood initiative (if it is part of the time series) and diversity.

# Takeaways from Meeting with FIA: How do they classify forests on the ground?

- Forest patch metrics: at least an acre in area and  $\geq$  120-foot width throughout the patch.
  - If the edge of the patch is at a 90-degree angle, it is included as forest.
- Trees with a non-natural or non-regenerative understory are not forest (including turf grass, agriculture, structures, etc.)
- Regenerative patches that are at least 10% Tree Canopy and meet the forest patch metrics are forest.
- If patches are segmented by an “unmaintained” feature that is less than 120-feet (bike roads, power lines, etc.), the patches on either side are considered one patch.

# Takeaways from Meeting with FIA: How do they classify forests on the ground?

- **Forest patch metrics: at least an acre in area and  $\geq$  120-foot width throughout the patch.**
  - If the edge of the patch is at a 90-degree angle, it is included as forest.
- **Trees with a non-natural or non-regenerative understory are not forest (including turf grass, agriculture, structures, etc.)**
- **Regenerative patches that are at least 10% Tree Canopy and meet the forest patch metrics are forest.**
- If patches are segmented by an “unmaintained” feature that is less than 120-feet (bike roads, power lines, etc.), the patches on either side are considered one patch.

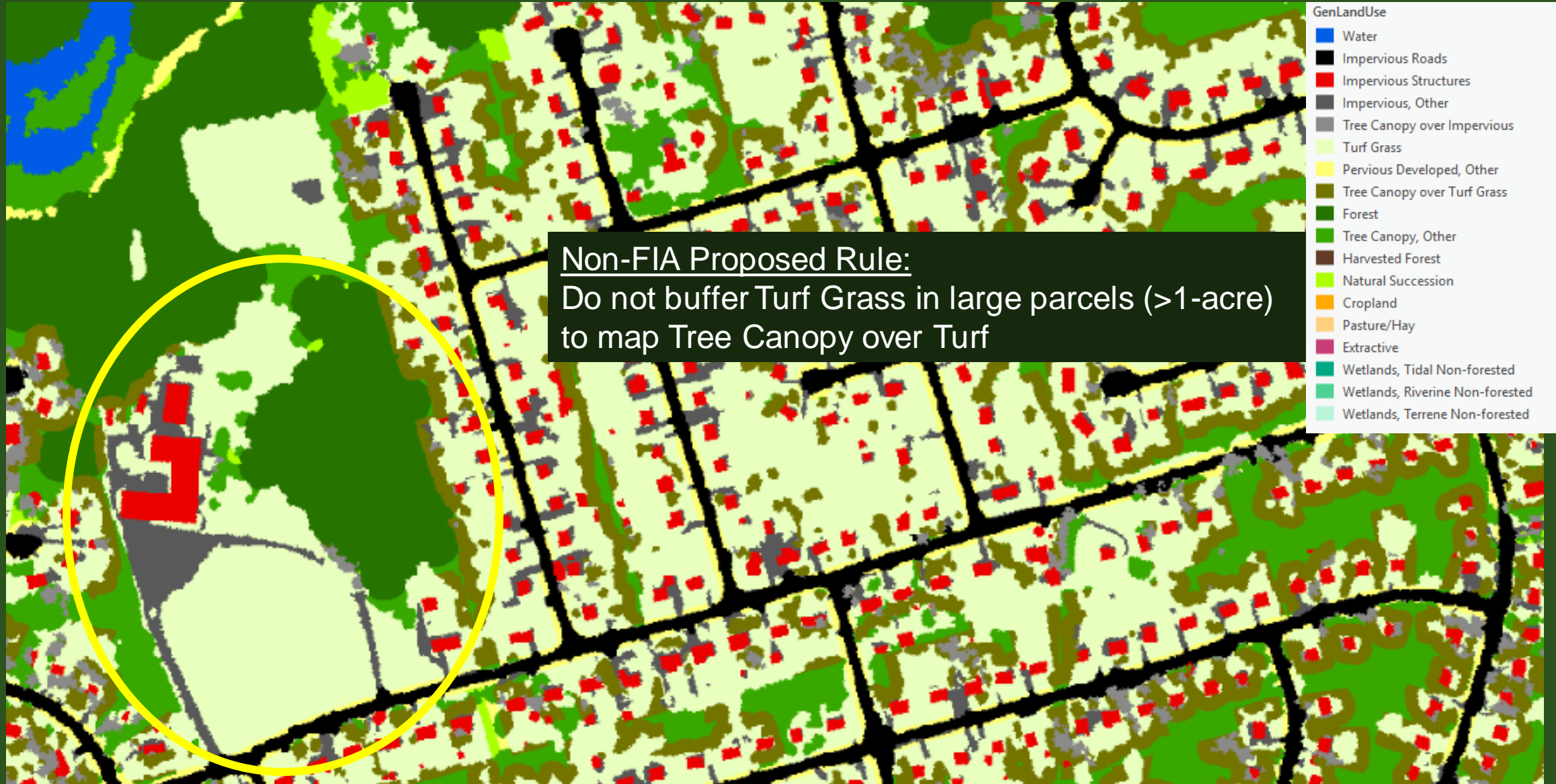




Land Use/Land Cover: Proposed 2024 Ed. Rules



# Land Use/Land Cover: Proposed 2024 Ed. Rules





# Land Use/Land Cover: Proposed 2024 Ed. Rules

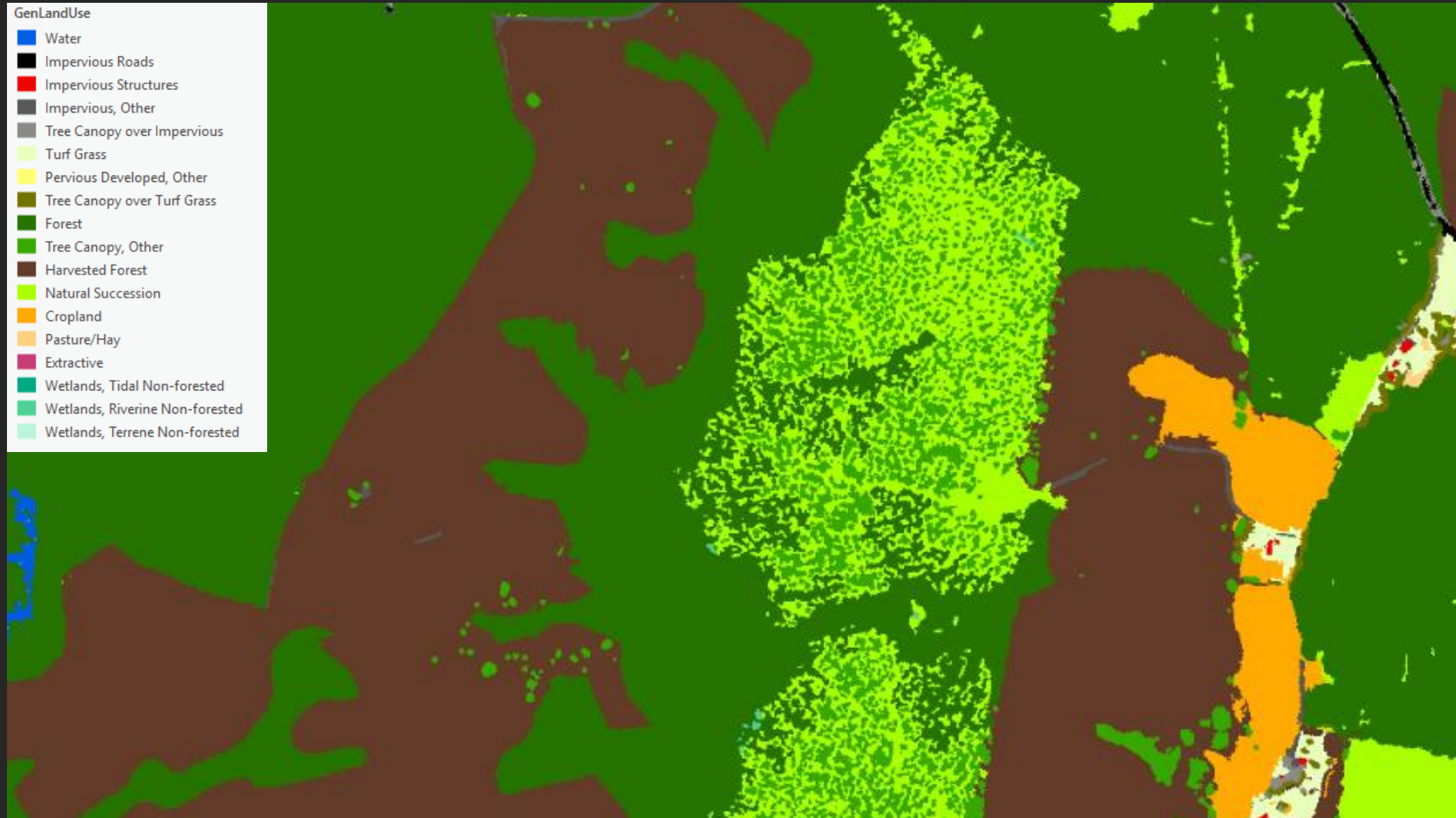




# Land Use/Land Cover: Proposed 2024 Ed. Rules

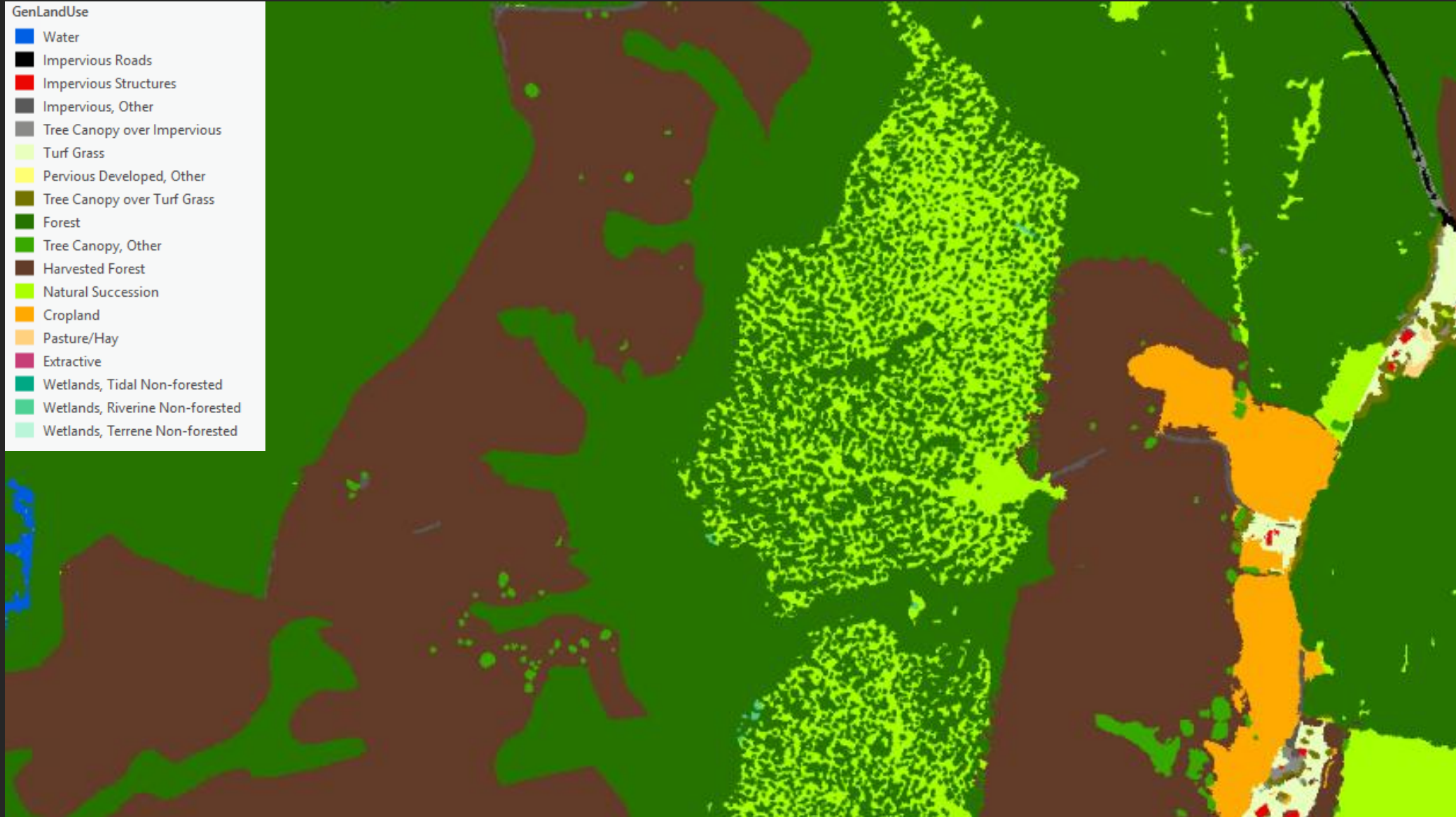


# Land Use/Land Cover: Proposed 2022 Ed.





## Land Use/Land Cover: Proposed 2024 Ed. Rules

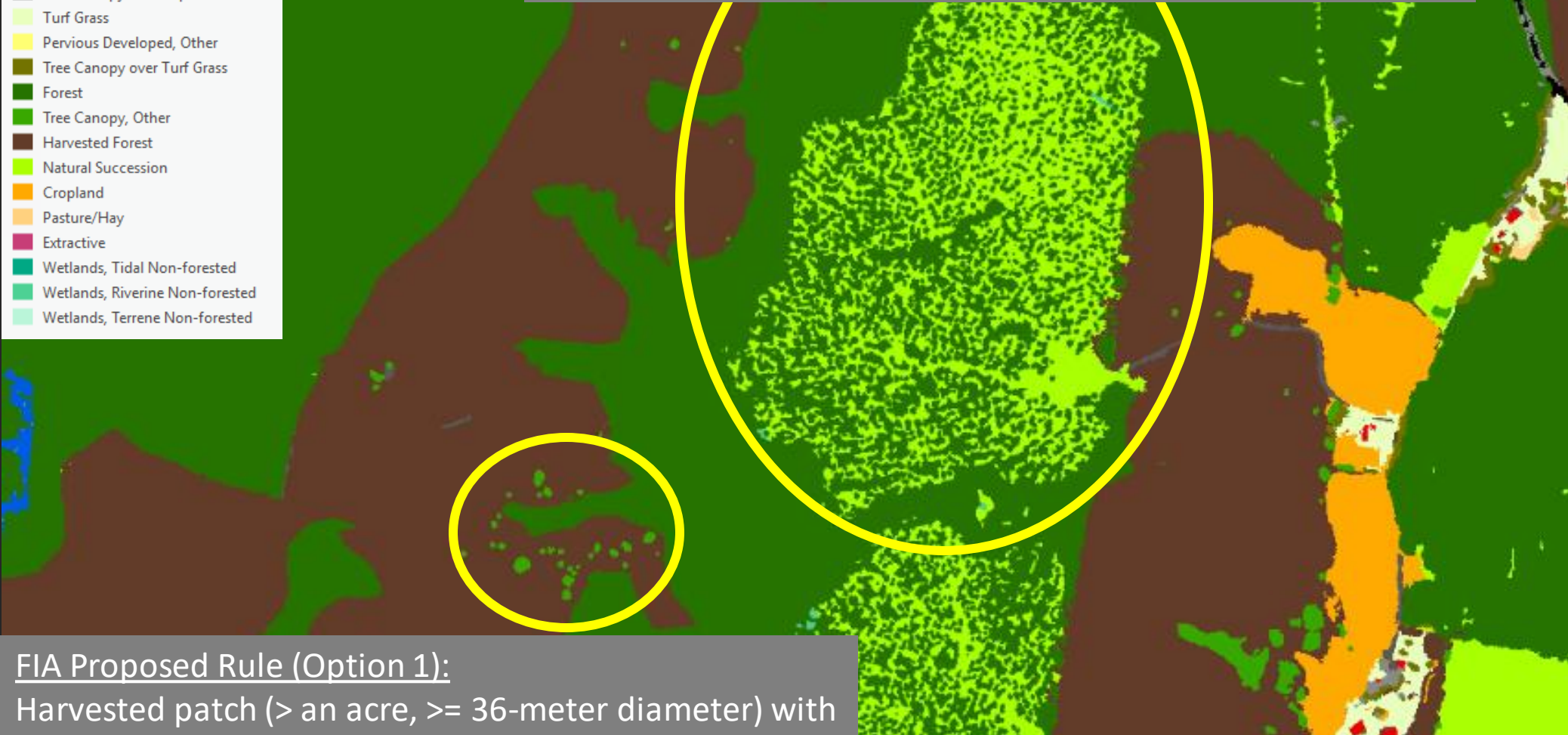


## Land Use/Land Cover: Proposed 2024 Ed. Rules

GenLandUse	
	Water
	Impervious Roads
	Impervious Structures
	Impervious, Other
	Tree Canopy over Impervious
	Turf Grass
	Pervious Developed, Other
	Tree Canopy over Turf Grass
	Forest
	Tree Canopy, Other
	Harvested Forest
	Natural Succession
	Cropland
	Pasture/Hay
	Extractive
	Wetlands, Tidal Non-forested
	Wetlands, Riverine Non-forested
	Wetlands, Terrene Non-forested

### FIA Proposed Rule (Option 1):

Patch of natural succession (> an acre,  $\geq$  36-meter diameter) with  $\geq$  10% Tree Canopy, the Tree Canopy is Forest.



### FIA Proposed Rule (Option 1):

Harvested patch (> an acre,  $\geq$  36-meter diameter) with  $<$  10% Canopy, Tree Canopy is Tree Canopy, Other

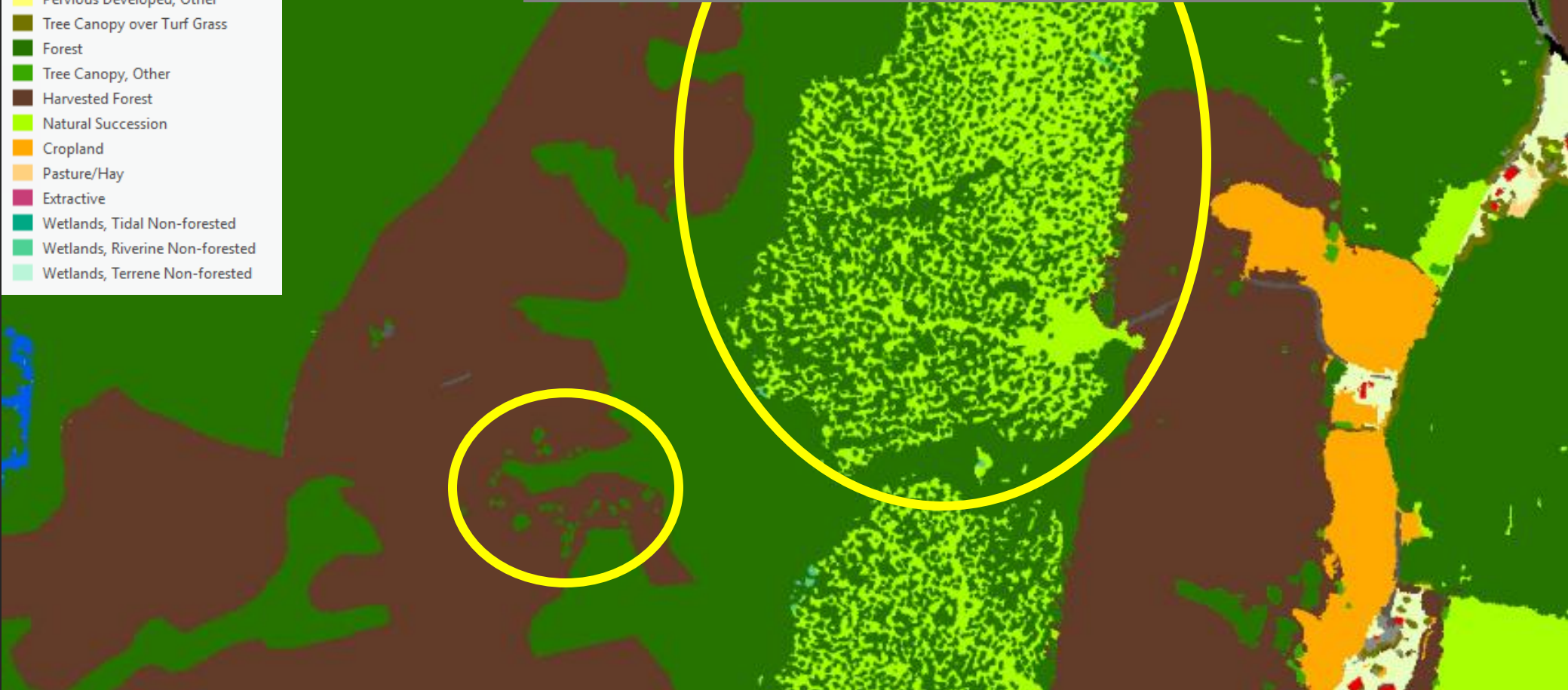


## Land Use/Land Cover: Proposed 2024 Ed. Rules

GenLandUse	
	Water
	Impervious Roads
	Impervious Structures
	Impervious, Other
	Tree Canopy over Impervious
	Turf Grass
	Pervious Developed, Other
	Tree Canopy over Turf Grass
	Forest
	Tree Canopy, Other
	Harvested Forest
	Natural Succession
	Cropland
	Pasture/Hay
	Extractive
	Wetlands, Tidal Non-forested
	Wetlands, Riverine Non-forested
	Wetlands, Terrene Non-forested

### Proposed Rule (Option 2):

Any Tree Canopy within a regenerative patch (Natural Succession or harvested forest) that meets forest patch metrics (1-acre, 36-meters) is Forest, regardless of the percentage of Tree Canopy.

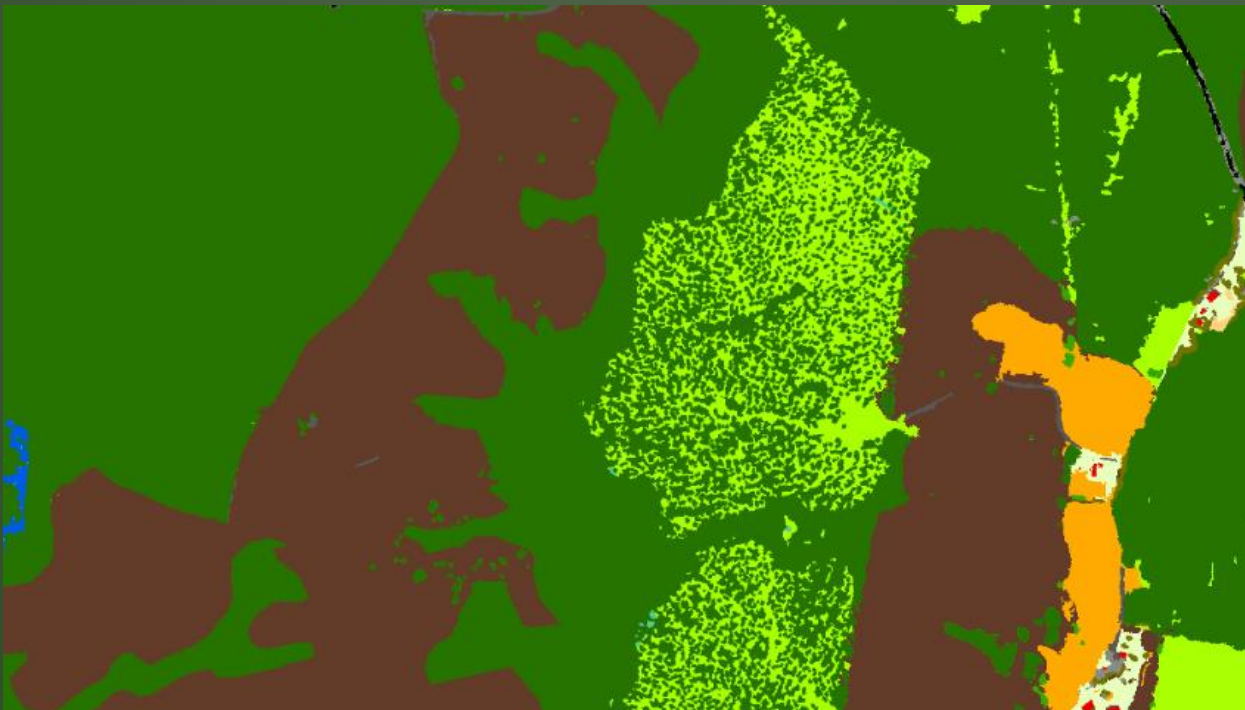
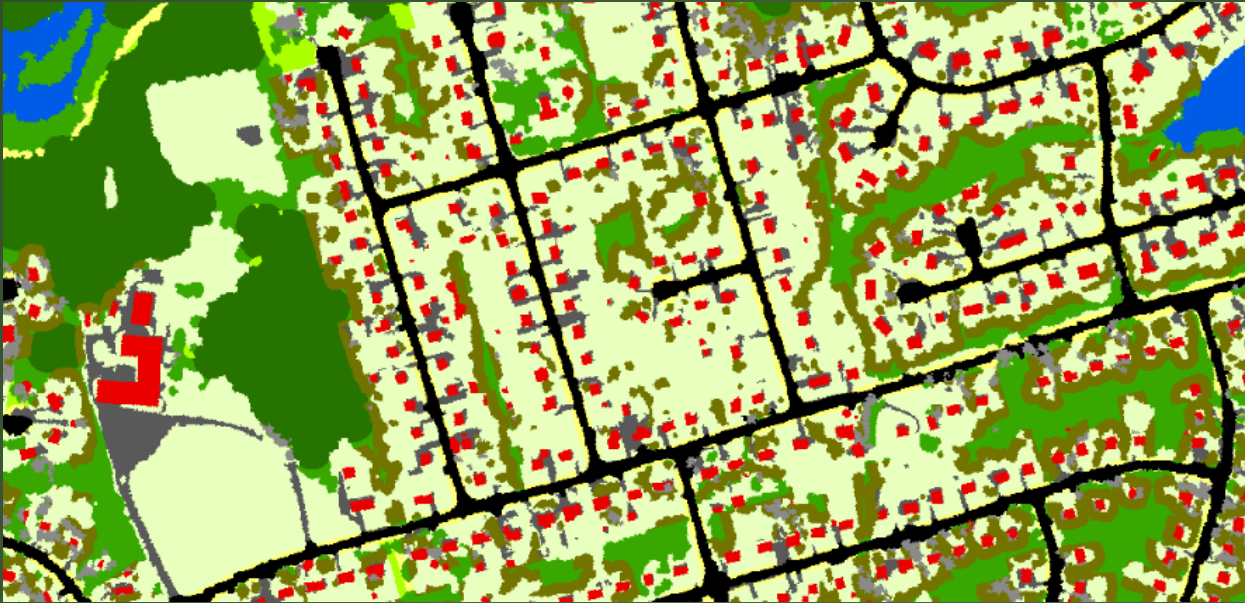


# Decisions

- Non-FIA rule:
  - Do not buffer turf grass in large parcels to map Tree Canopy over Turf Grass.
- FIA rules:
  - Remove Tree Canopy over Turf Grass before mapping Forests.
  - Parts of patches that are not at least 36-meters (120-feet) in diameter are not forest, but Tree Canopy, Other.
  - Tree Canopy within regenerative areas are forest.
    - Must be at least 10% Tree Canopy?

GenLandUse

- Water
- Impervious Roads
- Impervious Structures
- Impervious, Other
- Tree Canopy over Impervious
- Turf Grass
- Pervious Developed, Other
- Tree Canopy over Turf Grass
- Forest
- Tree Canopy, Other
- Harvested Forest
- Natural Succession
- Cropland
- Pasture/Hay
- Extractive
- Wetlands, Tidal Non-forested
- Wetlands, Riverine Non-forested
- Wetlands, Terrene Non-forested



# Contact

Sarah McDonald (she/her/hers)  
Geographer  
U.S. Geological Survey  
[smcdonald@chesapeakebay.net](mailto:smcdonald@chesapeakebay.net)  
[smcdonald@usgs.gov](mailto:smcdonald@usgs.gov)

