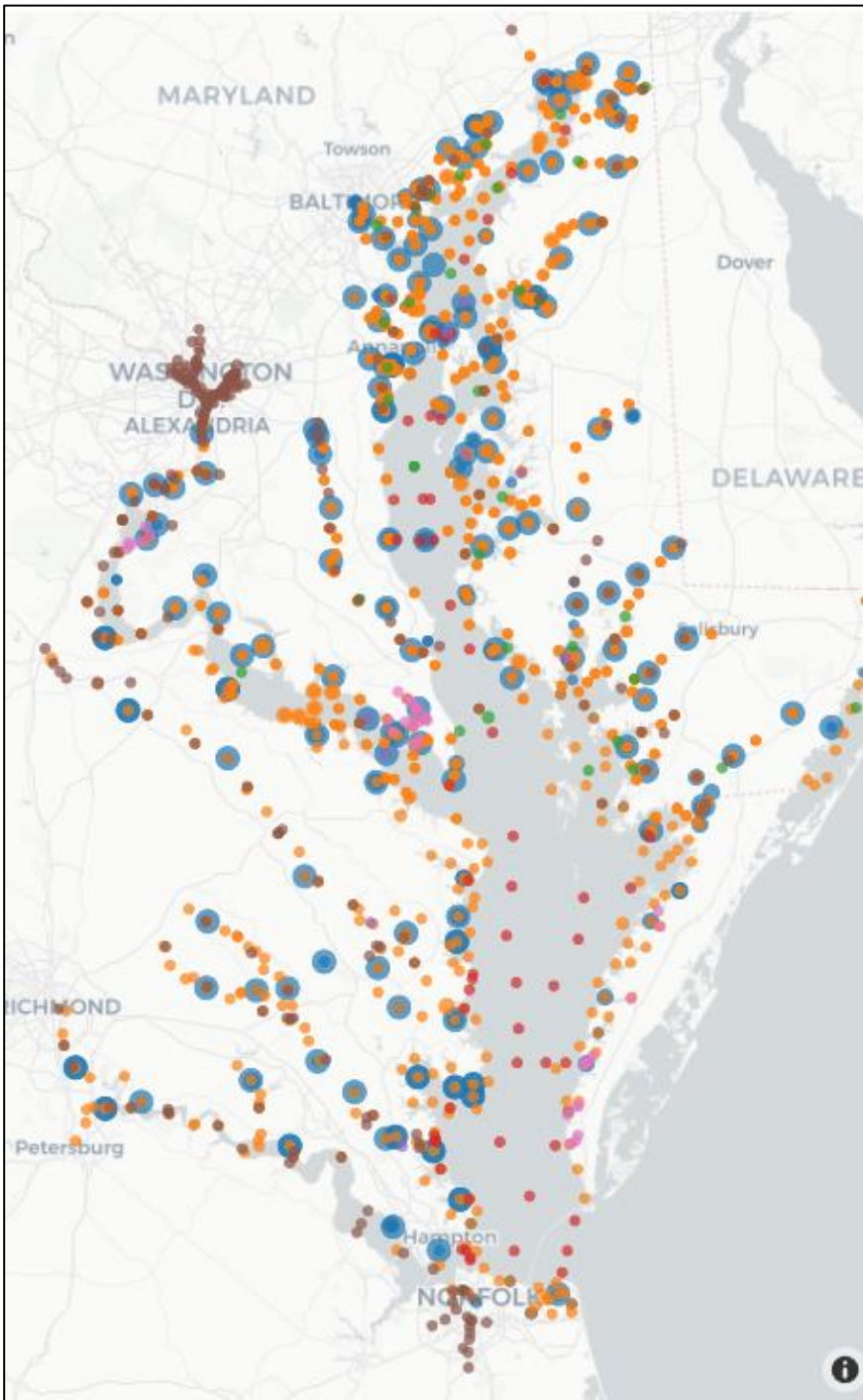


Data set overview

- Data Set Overview
- Focus on CMON data
- Profiler data



Data set overview

- CBP DataHub
 - Sites with DO
 - Main (MAIN) | Tributary (TRIB)
 - CMON | DFLOW – calibration events
 - Compiled Data Set
 - from DataHub: total depth, depth, DO, pH, specific conductivity, water temperature, salinity, DO saturation*
 - Calculated: density**, DO saturation***, DO saturation percent
- VECOS | Eyes on the Bay
 - CMON, DFLOW, Profiler
 - Meta data: project, latitude, longitude, year(s) of available data

Notes:

* Not often present

** UNESCO (2015)

*** Benson & Krause (1980, 1984)

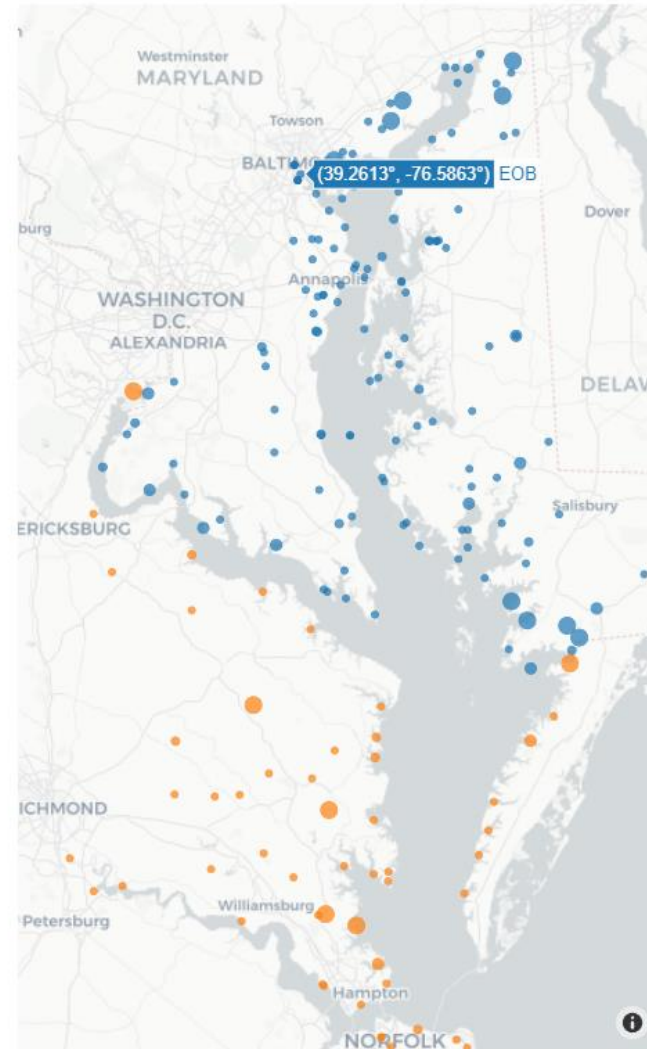
CMON Data

- 195 CMON sites
- ~ 28 sites in the pilot 4D modeling area
 - ~25 EOB
 - ~3 VECOS
- Picked 3 sites to evaluate first
 - EOTB: Sandy Point South Beach (XHF0460)
 - POR: 2004-present
 - ~336K observations
 - EOTB: Gooses Surface & Bottom (XEF3551)
 - POR: 2010-2020 (-2018 bottom)
 - ~137K (surface) and ~88K (bottom) observations
 - VECOS: Dividing Creek (DIV000.41)
 - POR: 2013-2015
 - Some data processing for comments and remark codes
 - ~53K observations

Notes:

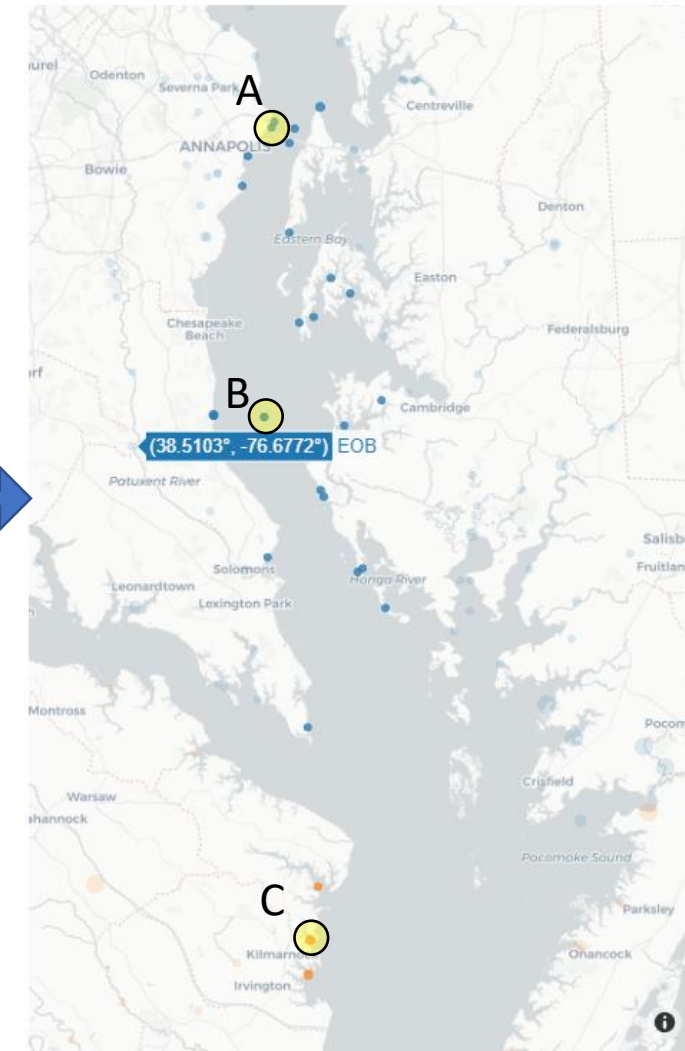
* All CBP DataHub ~677K observations

CBP DO Sites



• EOB • VECOS

CBP DO Sites



• EOB • VECOS • EOB • VECOS

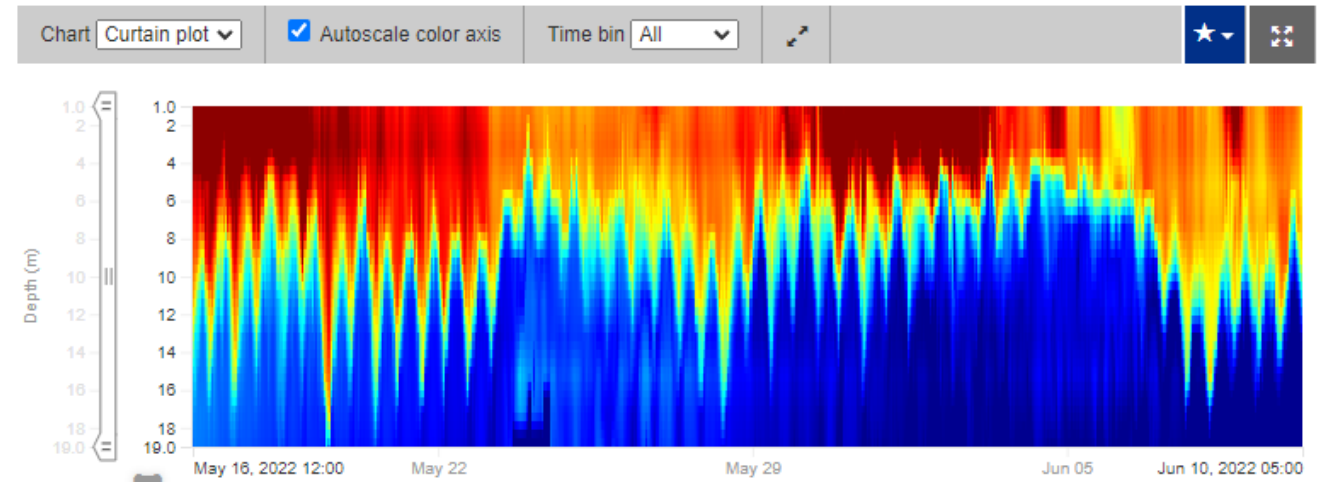
Profiler

East Gooses



- Two profiler stations
 - East and West Gooses
- Online: May 16, 2022
- Observation resolution
 - 10-minute interval
 - Depths: 1, 3, 5, ..., 19 meters
- ~45K observations / month

Oxygen: Dissolved Oxygen Concentration



Oxygen: Dissolved Oxygen Concentration

