



**FEATURED FUNDING PROGRAM:
CHESAPEAKE WATERSHED INVESTMENTS FOR LANDSCAPE DEFENSE (WILD)**

Chesapeake Bay Program – Budget and Finance Workgroup

February 28, 2023

CHESAPEAKE BAY STEWARDSHIP FUND

PURPOSE AND HISTORY

- Accelerate local restoration actions and spur innovation in watershed restoration
- Delivered in partnership with EPA, the Chesapeake Bay Program, and U.S. Fish and Wildlife Service.
- 1,350+ grants totaling roughly \$250M and leveraging \$351M in additional local matching funds since 1999

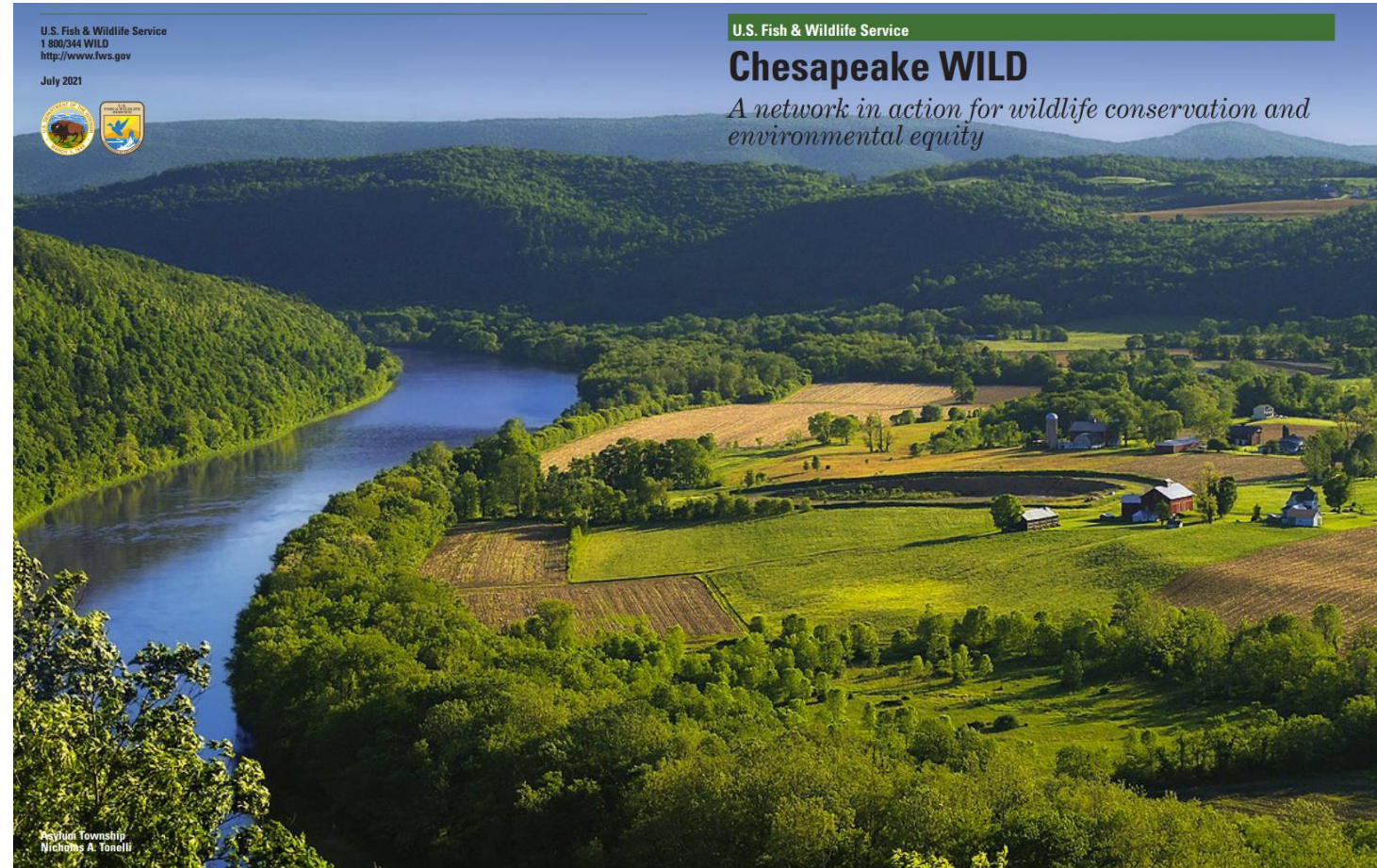
CHESAPEAKE BAY BUSINESS PLAN

- Provides a concise blueprint of NFWF's targeted conservation outcomes for the Chesapeake Bay
- Articulates NFWF's measurable contributions to goals and outcomes of the Chesapeake Bay Program partnership



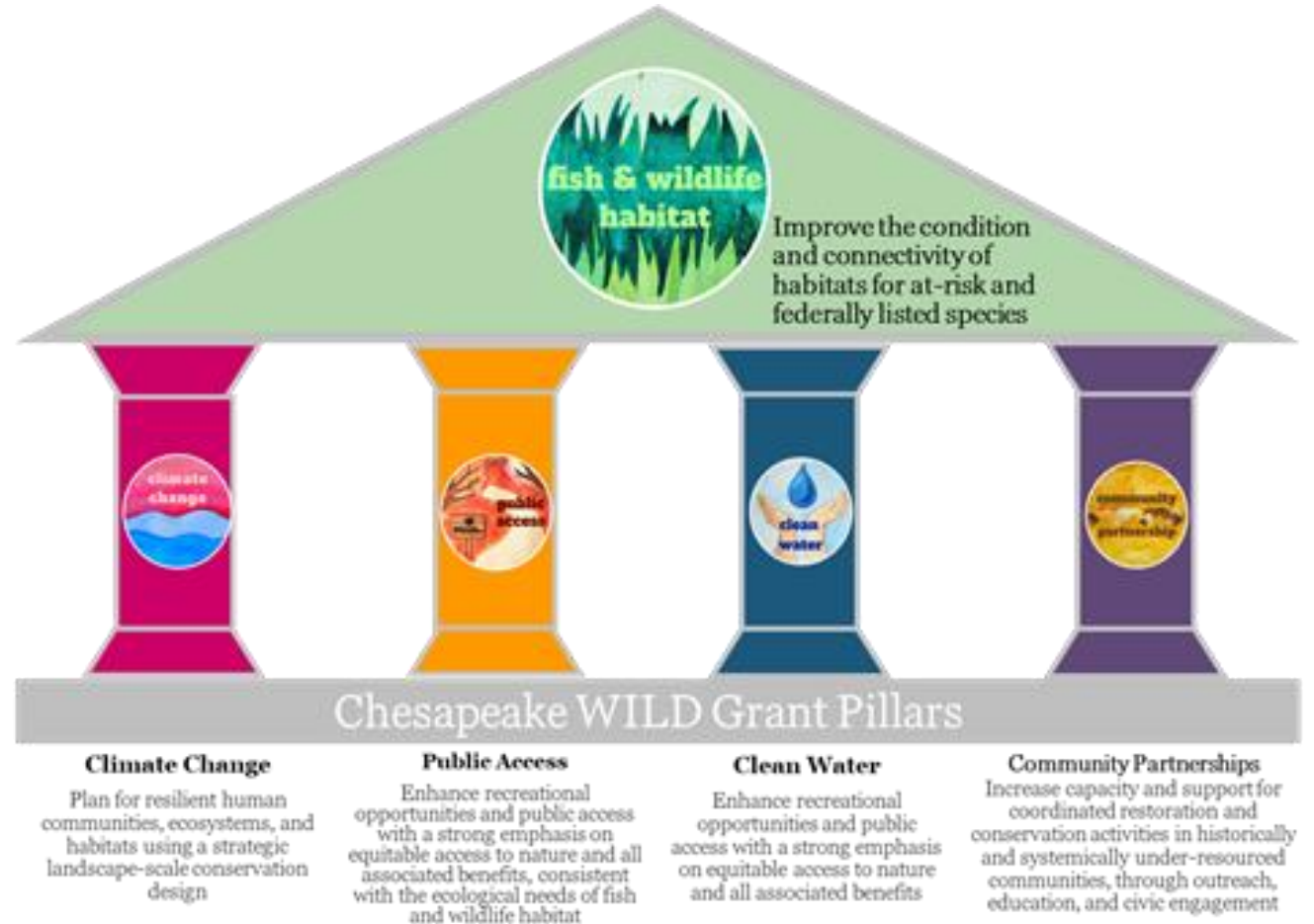
CHESAPEAKE WILD – PROGRAM BACKGROUND

- Authorized in 2020 through **America's Conservation Enhancement (ACE) Act** (P.L. 116-188)
- Coordination with the **Chesapeake Conservation Partnership**, state **wildlife agencies**, and other partners to establish a shared vision through the **Chesapeake WILD Framework** (2021)



CHESAPEAKE WILD – PROGRAM BACKGROUND

- Inaugural appropriations in **FY2022 (\$4M)**, deliver through NFWF's 2022 spring solicitation
- **FY2023 funding doubled (\$8M)**, currently being delivered through NFWF's 2023 spring solicitation



NFWF

CHESAPEAKE WILD GRANTS – PROGRAM PRIORITIES/PILLARS

Fish and Wildlife Habitats – connectivity, conservation, and restoration for *imperial species* (federal/state/Tribally-listed, NEAFWA RSGCN, State SGCN)



Imperiled Species



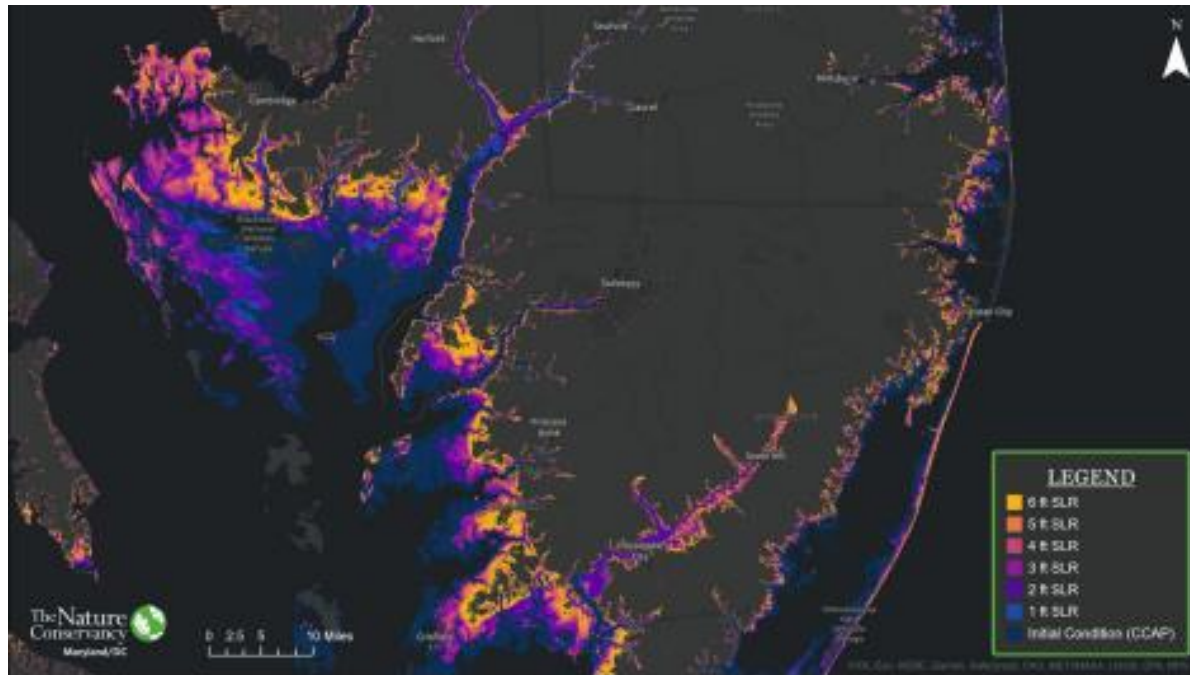
Imperiled Species

Providing focus on imperiled species tracked by NatureServe, including the most important habitats for 600 Species of Greatest Conservation Need (SGCN) identified by states, Endangered Species, and many species proposed for listing under the Endangered Species Act.



CHESAPEAKE WILD GRANTS – PROGRAM PRIORITIES/PILLARS

Climate Change – protecting and enhancing nature-based resilience for critical habitats of *imperiled species*



Areas along Maryland's Eastern Shore projected to be inundated in various sea-level rise scenarios.



Climate Change

Plan for resilient human communities, ecosystems, and habitats using a strategic landscape-scale conservation design



NFWF

CHESAPEAKE WILD GRANTS – PROGRAM PRIORITIES/PILLARS

Community Partnership through capacity building and enhanced delivery of technical assistance



Chesapeake Bay Program

Masonville Cove in Baltimore was one of the first Urban Wildlife Refuge Partnerships established in the nation, and reflects years of work by local partners to support restoration and community engagement at the cove.



Community Partnerships

Increase capacity and support for coordinated restoration and conservation activities in historically and systemically under-resourced communities, through outreach, education, and civic engagement



NFWF

CHESAPEAKE WILD GRANTS – PROGRAM PRIORITIES/PILLARS

Public Access – enhancing equitable access and public awareness



Sarah Rogers/NPS

Improving and expanding access is a key component to making recreational opportunities more equitable in the watershed.



Public Access

Enhance recreational opportunities and public access with a strong emphasis on equitable access to nature and all associated benefits, consistent with the ecological needs of fish and wildlife habitat



NFWF

CHESAPEAKE WILD GRANTS – PROGRAM PRIORITIES/PILLARS

Water Quality – emphasizing benefits for *imperiled species*



USFWS

Freshwater mussels, like the endangered dwarf wedgemussel, make rivers and streams more hospitable for aquatic species by stabilizing the bottom, and healthier for people by filtering out polluting particles.



Clean Water

Enhance recreational opportunities and public access with a strong emphasis on equitable access to nature and all associated benefits



NFWF

CHESAPEAKE WILD GRANTS – COMMITMENT TO DEI

NFWF and FWS will prioritize proposals from applicants that have directly and meaningfully engaged local communities in the identification, prioritization, selection, and implementation of proposed actions. Examples include:

- Co-creating project with community members
- Empowering community members with knowledge and decision-making authority
- Ensuring the project team includes community members and collaborative management with the community
- Including active engagement strategies (workshops, classroom activities, field trips, and volunteer opportunities)
- Addressing a specific and localized harm such as pollution, flooding, or fires
- Creating jobs in the target community or performing job training and certification
- Directly engaging in specific cultural activities with the community



CHESAPEAKE WILD GRANTS – ELIGIBILITY

| Organization Type | Program | | | |
|--------------------------------------|--------------------|---------|---------------------|----------|
| | SWG Implementation | SWG-PTA | WILD Implementation | WILD-PTA |
| 501(C) non-profit organizations | ✓ | ✓ | ✓ | ✓ |
| Community based organizations | ✓ | ✓ | ✓ | ✓ |
| Local Governments | ✓ | ✓ | ✓ | ✓ |
| Municipal governments | ✓ | ✓ | ✓ | ✓ |
| Tribal governments and organizations | ✓ | ✓ | ✓ | ✓ |
| K-12 educational institutions | ✓ | ✓ | ✓ | ✓ |
| U.S. Federal Government agencies | ✗ | ✗ | ✓ | ✓ |
| State Government Agencies | ✗ | ✓ | ✓ | ✓ |
| Institutions of higher education | ✗ | ✓ | ✓ | ✓ |
| Businesses | ✗ | ✗ | ✗ | ✗ |
| Unincorporated Individuals | ✗ | ✗ | ✗ | ✗ |
| International Organizations | ✗ | ✗ | ✗ | ✗ |

| | Program | | | |
|----------------------------|------------------------------|------------------------------|---------------------|------------------------------|
| | SWG Implementation | SWG-PTA | WILD Implementation | WILD-PTA |
| Project Award Range | \$75,000 – 500,000 | Up to \$75,000 | \$75,000 – 750,000 | Up to \$75,000 |
| Match Requirement | Encouraged, but not required | Encouraged, but not required | 1:1* | Encouraged, but not required |

* Up to 50% of **WILD Implementation** grants match requirement may be met through federal match from non-Department of Interior sources.

- **WILD Grants** can support direct costs of land conservation
- **SWG Grants** cannot support direct costs of land conservation





Photo Credit: Will Parson, Chesapeake Bay Program

Photo Credit: Will Parson, Chesapeake Bay Program

TABLE OF CONTENTS

- Introduction to NFWF's Chesapeake Bay Stewardship Fund
 - Chesapeake Bay Stewardship Fund
 - Program Staff
- General Metrics Information
 - Metrics Overview
 - Common Mistakes
 - List of Available Metrics
 - Chesapeake Bay Stewardship Fund
- Metrics Descriptions and Tips
 - Water Quality Improvement
 - Stream and Riparian Restoration & Conservation
 - Aquatic Habitat Connectivity and Restoration
 - Terrestrial Habitat Connectivity, Conservation & Restoration
 - Tidal & Estuarine Habitat Connectivity, Conservation & Restoration
 - Public Access Improvement
 - Capacity, Outreach, Incentives
- Metrics Resources
 - FieldDoc



Additional Resources

CBSF QUICK REFERENCE PROJECT GUIDE

BACKGROUND

This guide is intended to provide prospective Chesapeake Bay Stewardship Fund applicants with assistance in selecting the most appropriate grant program to apply for based on primary proposed activities.

While NFWF does not require consultation prior to application, we strongly encourage interested applicants to contact NFWF staff or its contracted field liaisons to discuss their proposed project, gather constructive feedback in developing a competitive proposal, and to obtain guidance on the most appropriate program and funding opportunity for project consideration. Interested applicants may schedule virtual project consultations with NFWF staff [here](#).

SELECTING THE RIGHT PROGRAM

| Project Type | Program |
|---|--|
| Watershed Restoration and water quality improvement projects with a primary goal... | ...to reduce nutrient and sediment pollution to the Chesapeake Bay or other pollutants of concern affecting local human communities |
| | Small Watershed Grants Program |
| Improving Habitat connectivity, conservation, and restoration for the benefit of... | ... of improving habitat or addressing threats for imperiled species |
| | Chesapeake WILD Grants Program |
| | ... species identified in the 2014 Chesapeake Bay Watershed Agreement and NFWF's Chesapeake Bay Business Plan (e.g., Eastern brook trout, American black duck, eastern oyster, or anadromous fish species) |
| | Small Watershed Grants Program |
| | ... other imperiled species |
| | Chesapeake WILD Grants Program |



Updated February 2023

Photo Credit: Will Parson, Chesapeake Bay Program



CHESAPEAKE WILD GRANTS – SUPPORT FOR CBP OUTCOMES

| "SWG ONLY" | | "WILD ONLY" |
|---|---------------------|--|
| CHESAPEAKE BAY WATERSHED AGREEMENT | OVERLAP | CHESAPEAKE WILD FRAMEWORK |
| Sustainable Fisheries | Oysters | Fish and Wildlife Habitats Species conservation and habitat restoration for <i>imperiled species</i> Eligibility for direct land acquisition and easement costs |
| Vital Habitat | Wetlands | |
| | Black duck | |
| | Stream health | |
| | Brook trout | |
| | Fish passage | |
| Land Conservation Healthy Watersheds | SAV | |
| | Forest buffers | |
| | Tree Canopy | |
| | Land protection | |
| | | |
| Water Quality | Wetlands | Water Quality |
| Watershed restoration with habitat co-benefits | Stream health | Habitat restoration and species conservation with water quality co-benefits |
| | Forest buffers | |
| Toxic Contaminants | | Toxic Contaminants |
| | | For <i>imperiled species</i> |
| Climate Resiliency | Climate adaptation | Climate Change Adaptation |
| Stewardship | Citizen stewardship | Community Partnership |
| | Local leadership | |
| | Diversity | |
| Public Access | | Public Access |
| Environmental Literacy | | Environmental Literacy |

CHESAPEAKE WILD – 2022 AWARDS (IMPLEMENTATION)

| EZG | ORGANIZATION | TITLE | PROJECT LOCATION | STATE(S) | PROPOSED AWARD | MATCH |
|-------|---|--|---|----------|----------------|--------------|
| 74954 | Western Pennsylvania Conservancy | Improving Aquatic Organism Passage on State Gamelands in Central Pennsylvania | WPC will work within the North and Southcentral Regions of the Pennsylvania Game Commissions lands which lie within the Chesapeake Bay watershed boundaries. | PA | \$ 499,967 | \$ 616,250 |
| 75291 | Ducks Unlimited, Inc. | Doe Creek WMA Enhancement | Doe Creek WMA is located on the Eastern Shore of Virginia, Bay side, in Accomack County. The WMA is about 4 miles North of the city of Onancock, and lies within the Chesapeake Bay watershed and adjacent to tidal wetlands within the bay. | VA | \$ 476,432 | \$ 200,000 |
| 75387 | Western Pennsylvania Conservancy | Protecting Critical Habitat and Water Quality in Pennsylvania's Western Tributaries | This project will take place in river basins flowing into the Chesapeake Bay from central and western Pennsylvania, including the following watersheds: Juniata River, West Branch Susquehanna River, Potomac River, and Penns Creek. | PA | \$ 492,699 | \$ 556,000 |
| 75391 | WeConservePA | Conservation Easement Implementation and Resource Management Planning Assistance | The Chesapeake Bay watershed in Pennsylvania | PA | \$ 150,000 | \$ 210,000 |
| 75598 | The West Virginia Land Trust | Potts Creek James Spiny mussel Restoration Project (WV) | Project is located along South Fork Potts Creek and parallels Waiteville Road (Route 17) approximately 5 miles south of Gap Mills, Monroe County, West Virginia. | WV | \$ 499,824 | \$ 30,250 |
| 75643 | Eastern Shore Land Conservancy | Blackwater - Nanticoke Habitat Migration Corridor Protection | ESLC will focus outreach and implementation in Dorchester County, MD, specifically in the region between Blackwater NWR and the Nanticoke River watershed. | MD | \$ 500,000 | \$ - |
| 75859 | Indiana University of Pennsylvania Research Institute | Implementing management practices in young forest stands to promote the resiliency and habitat in mixed-oak forests | This project will occur across several State Game Lands within the Chesapeake Bay Watershed's state-identified healthy watersheds and protect priority habitat corridors in northcentral Pennsylvania. In these SGLs, we will target young forests between 10-25 years post-timber harvest. | PA | \$ 341,221 | \$ 85,000 |
| 75917 | Cacapon and Lost Rivers Land Trust, Inc. | Cacapon Clubs and Hubs: A strategic approach to water and wildlife conservation in the Cacapon & Lost Rivers Watershed | The Cacapon and Lost Rivers Watershed in the Central Appalachians, identified as a priority watershed in the Chesapeake Bay Stewardship Program, spans 680 square miles across portions of Hardy, Hampshire, and Morgan counties in West Virginia. | WV | \$ 275,905 | \$ 1,384,500 |

CHESAPEAKE WILD – 2022 AWARDS (PLANNING)

| EZG | ORGANIZATION | TITLE | PROJECT LOCATION | STATE(S) | PROPOSED AWARD | MATCH |
|-------|--|--|--|----------|----------------|--------------|
| 75153 | James River Association | Establishing a Freshwater Mussel Restoration Plan in the James River Basin | The James River Basin (located in Virginia) is comprised of three sections - Upper, Middle, and Lower. Specifically, this project will be focused on the section where freshwater mussels are able to live which includes the headwater streams in the Upper to the tidal fresh sections in the Lower. | VA | \$ 51,818 | \$ 25,000 |
| 75296 | Alliance for the Restoration of Northwest Creek (ARNC) | Restoration of Northwest Creek | Northwest Creek is located on the southern end of Kent Island in Queen Anne's County, Maryland. We are in the Lower Chesapeake Bay Watershed. Latitude: 38 51' 59.46" N Longitude 76 21' 49.84" W | MD | \$ 75,000 | \$ 30,000 |
| 75592 | Chesapeake Bay Foundation, Inc. | Establishing a Plan for Freshwater Mussels: Protect, Restore, and Engage | The proposed project will create a Mussel Richness Map for Virginia's portion of the Chesapeake Bay watershed, as well as a Conservation Buffer Layer that will identify the best locations to install buffer projects to benefit mussels. Project work will take place in CBF's Richmond Office. | VA | \$ 73,764 | \$ 12,007 |
| 76143 | NDPonics Inc | Short Hills indigenous wetland assessment and restoration plan | Situated in Rockbridge and Botetourt Counties in Virginia | VA | \$ 75,000 | \$ 1,125,000 |

CHESAPEAKE WILD GRANTS – 2023 PROGRAM TIMELINE

RFP Released: **Wednesday, February 8th**

Applicant Webinar: **Friday, February 3rd**

Proposals Due: **Thursday, April 20th**

Proposal Review: **May**

Board Approval: **August**

Award Notification: **August**

Award Announcement: **September (estimated)**



NCRF PROGRAM OVERVIEW



Program Priorities: Nature-based solutions that reduce risks of coastal hazards to communities and that enhance habitat for fish and wildlife.

Anticipated Funding: ~\$140 million in 2023

Average Award Amounts: No caps; estimated average awards between \$100,000 (planning & design) and up to \$10 million (implementation)

Eligibility: State/local governments, Tribes, nonprofits, universities, for-profits

Match: Not required, encouraged

Pre-Proposal Deadline: April 12, 2023 at 11:59pm ET

www.nfwf.org/national-coastal-resilience-fund

America the Beautiful Challenge

www.nfwf.org/challenge

| | |
|--|---|
| RFP Issued | March 1, 2023 |
| Pre-proposals Due | April 20, 2023 |
| Applicant Webinar | March 9, 2023, 2pm EST |
| Full Proposals Due <i>(by invitation only)</i> | July 20, 2023 |
| Where | Nationwide, including U.S. Territories |
| What | aquatic, grassland and forest restoration; wildlife corridors; ecosystem and community resilience; public access |
| Grant sizes | est. \$200k - \$5 million |
| Awarded in 2022 | \$91 million |
| Available in 2022 | \$116 million |
| Funders | DOI through FWS, USDA/USFS USDA/NRCS, DOD, NAP |
| Contact | Rachel Dawson (rachel.dawson@nfwf.org) or Sydney Godbey (sydney.godbey@nfwf.org) |



NFWF

Questions Answers



NFWF

NFWF Staff Contacts:



Jake Reilly, (he/him) Program Director
jake.reilly@nfwf.org
(202) 595-2610



Joe Toolan, (he/him), Program Manager
joe.toolan@nfwf.org
(202) 888-1677

Carley Morton, (she/her), Regional Coordinator
carley.morton@nfwf.org
(202) 857-0166

Easygrants Questions
easygrants@nfwf.org

| Field Liaison Contact | Email | Phone |
|---|--|----------------|
| <u>Kristen Saacke Blunk</u> | kristen@headwaters-llc.org | (814) 360-9766 |
| <u>Kristen Hughes Evans</u> | kristen@sustainablechesapeake.org | (804) 554-3403 |
| <u>Liz Feinberg</u> | liz.feinberg63@gmail.com | (610) 212-2345 |
| <u>Katie Ombalski</u> | katie@woodswaters.com | (814) 574-7281 |