

1) How long have your riparian foresters been working in their positions?

Average, 1 year

Patrick Ma- about 1 year

Lindsey O'Brien- completed seasonal contract, did not reapply

Erik Castello- 1.5 years, currently vacant

Brittany Haas- completed seasonal contract, just converted to 1-year contract

Bob Schwartz- started in November 2017

2) Who are the key partners with whom you are successfully working?

MDA- prioritizing MACS for CREP

FSA

NRCS

USFWS- especially maintenance

CBF

ACB

3) Who are the key partners with whom you are hoping to work with more?

UM Extension- new extension agent on Eastern Shore

Land trusts- to have conserved land be well-buffered

CBF- more coordination with bonus programs

AFT- Women's Learning Circles outreach

Young Farmers-

CASA- Chesapeake Alliance for Sustainable Agriculture

Ducks Unlimited

4) How much of your time are your foresters working on:

a. Reenrollment; 30%

on-the-ground outreach to new landowners; 40%

office targeting and coordination 10%

training, integrated program delivery (BYB, forestry plans, etc.)

5) Where are you finding success in outreach?

BYB, Consistent, honest technical assistance on general forestry

6) What funding is available outside of CREP, RCPP, EQIP? Do you have state grant programs targeted to riparian areas?

MACS- 37.5% cost-share, can be more flexible with tree shelter

NIP- NFWF grant for Nutrient Incentive Program

EPA CBIG Special Rivers (mostly TA)

Chesapeake Bay Trust Fund- competitive grant funding

NFWF- competitive grants

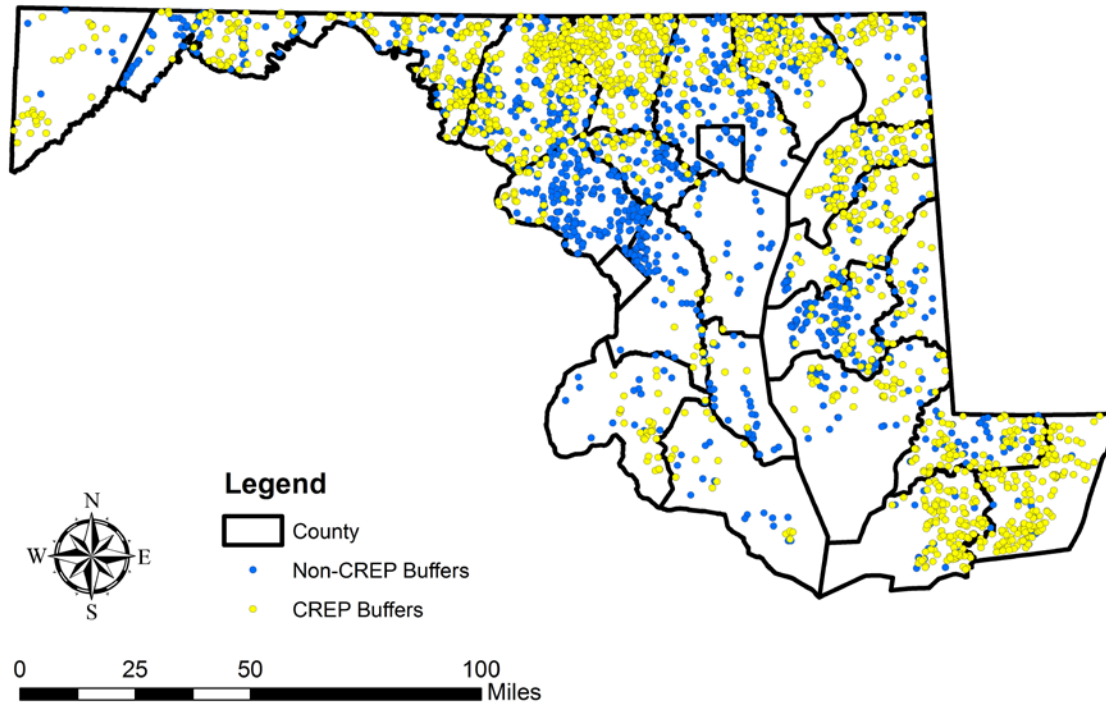
7) What innovative projects/data/etc. are you using to increase buffers?

Ecohydrologically active area targeting (with close coordination with NRCS/FSA)

Buffers on agenda in Women's Learning Circles, Am. Farmland Trust

NFWF grant partnership with UMCP, MFS, and Cacapon Institute, incl. TELE workshop

All Forest Buffer Plantings in Maryland from 1998 to 2017

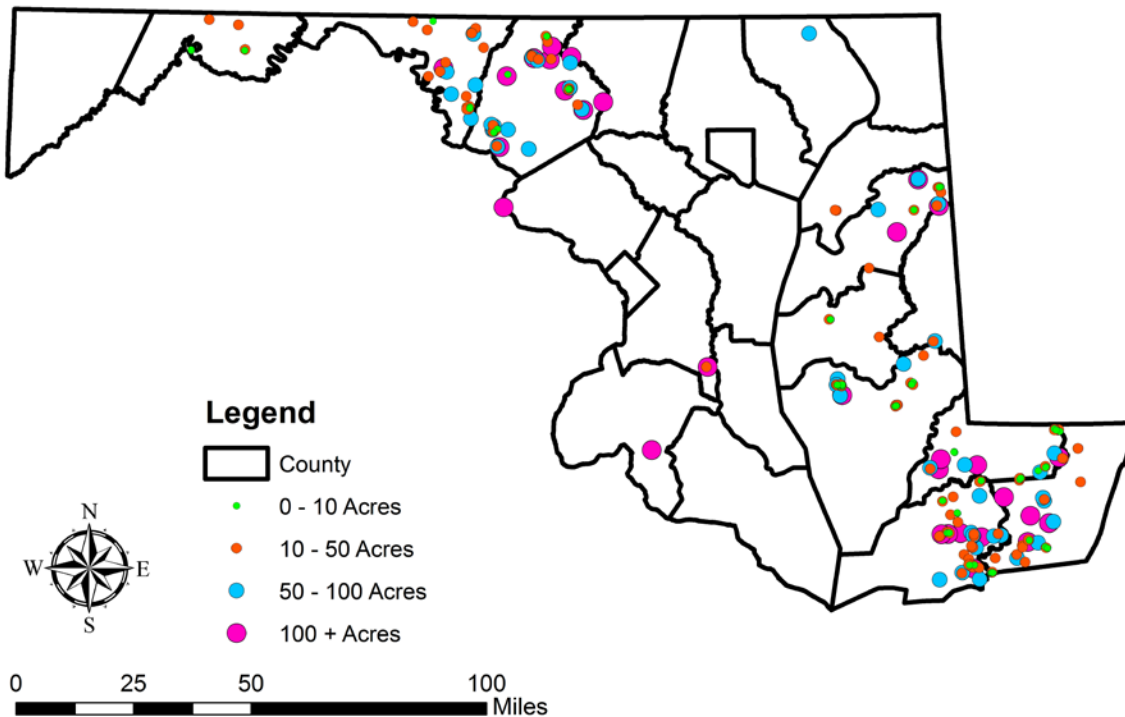


CRP RFB Technical Assistance grant, Year 1: Goals and Progress for Maryland Riparian Forest Buffer Initiative, 2017

	All regions Goal	Western MD Completed	Central MD Completed	Eastern MD Completed	All regions Total
Buffer sites monitored	20	3	7	30	40
# landowners contacted for reenrollment	200	18	32	16	66
# landowners contacted for new enrollment		1	35	4	40
# landowners contacted based on targeting (WA Co.)	200	485	0		485
# site visits for potential reenrollment	40	17	8	15	40
# site visits for potential new enrollment		2	2	4	8
# sites reenrolled in CRP/CREP		15	16	10	41
Acreage of sites reenrolled	80	81.26	70.1	119	270.36
# sites newly enrolled in CRP/CREP		1	4	3	8
Acreage of sites newly enrolled		4.25	11	9.5	24.75
# workshops or events with displays	6	0	2	2	4
Estimated attendance at workshops, events, other outreach	6000	0	500	550	1,050
# mailings or other contacts (e.g., BYB)		771	200	134	1,105
# plans prepared for new or reenrolling property	20	1	8	13	22

All CREP Buffers in Maryland under Permanent Easement

12,932 Acres



Challenges:

Program pauses (state and federal)- 2017 was a low year because of lack of funding for state cost-share, now available but still limited compared to demand; MDA has prioritized CREP contracts.

Varying levels of support among FSA/NRCS county office staff

No FSA funding for enhanced incentives