

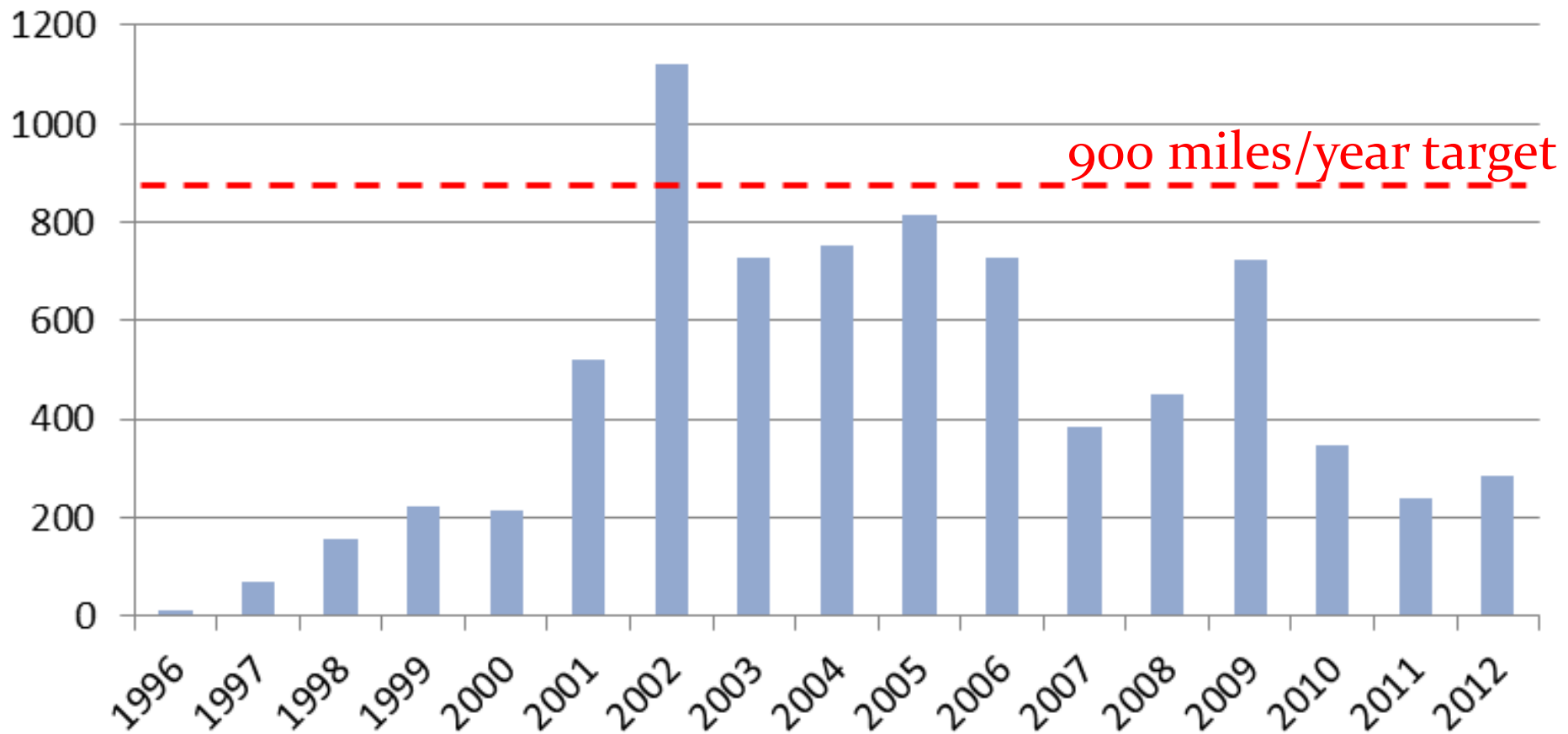
Forest Buffers in Chesapeake TMDL

From “Buffering the Bay” Report

<http://tinyurl.com/bufferingthebay>

Past Progress – Miles Reported by States

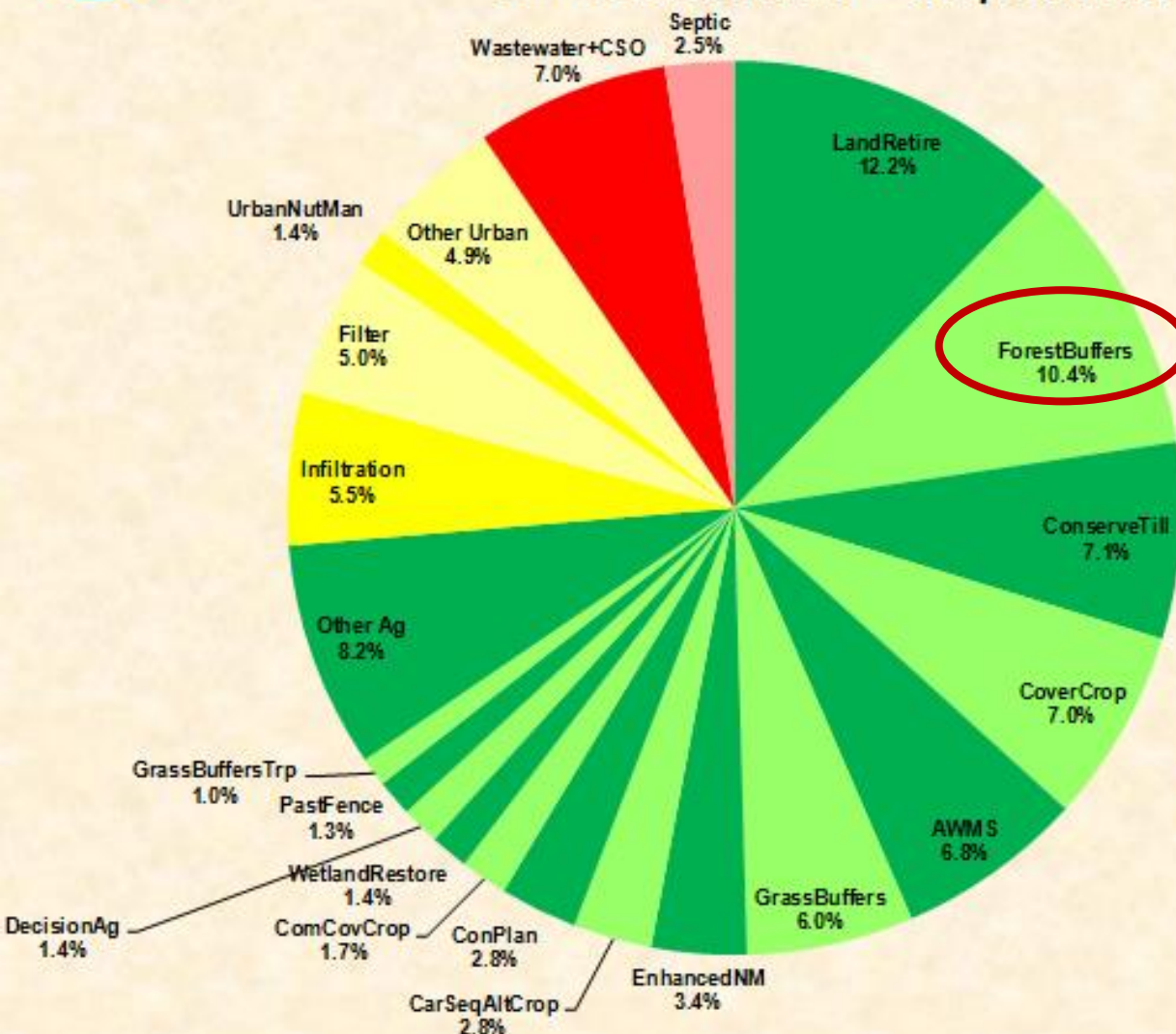
Miles of Riparian Forest Buffers Planted in Chesapeake Bay Watershed, 1996-2012



States relying on past and future acres



Nitrogen Relative Load Reductions CB Watershed – as percent



Forest Buffers rank second of all nonpoint source BMPs needed to meet TMDL targets.

- Includes both past CP-22 acres and planned 2013-2025

Each slice represents the percent of the total load reduction attributable to planned implementation levels for that BMP.

TMDL/WIP targets for forest buffers

	<u>Total New</u> <u>Acres Needed</u> 2012-2025	Acres/year needed	2012 CP-22 acres
Delaware	4790	370	0
Maryland	1190	90	264
New York	6180	475	91
Pennsylvania	89,630	6895	493
Virginia	80,820	6215	683
West Virginia	3250	250	249
TOTAL	185,860	14,295	1780

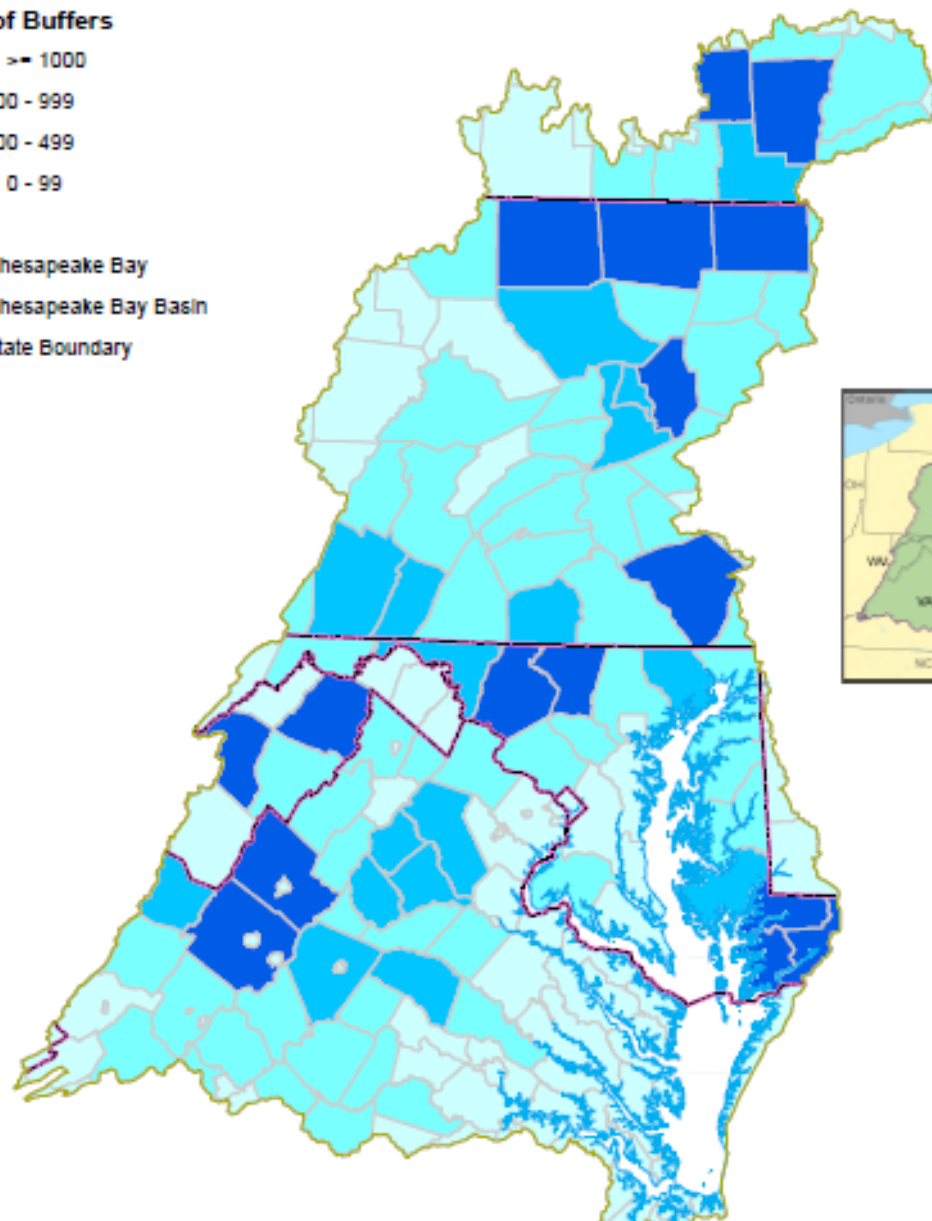
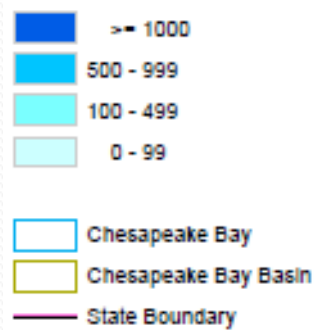
14295 acres/year = 1191 miles/year of 100 ft wide buffers

Acres of Forest Buffers Restored Through CRP/CREP in the Chesapeake Bay Basin, by County (1998-2012)



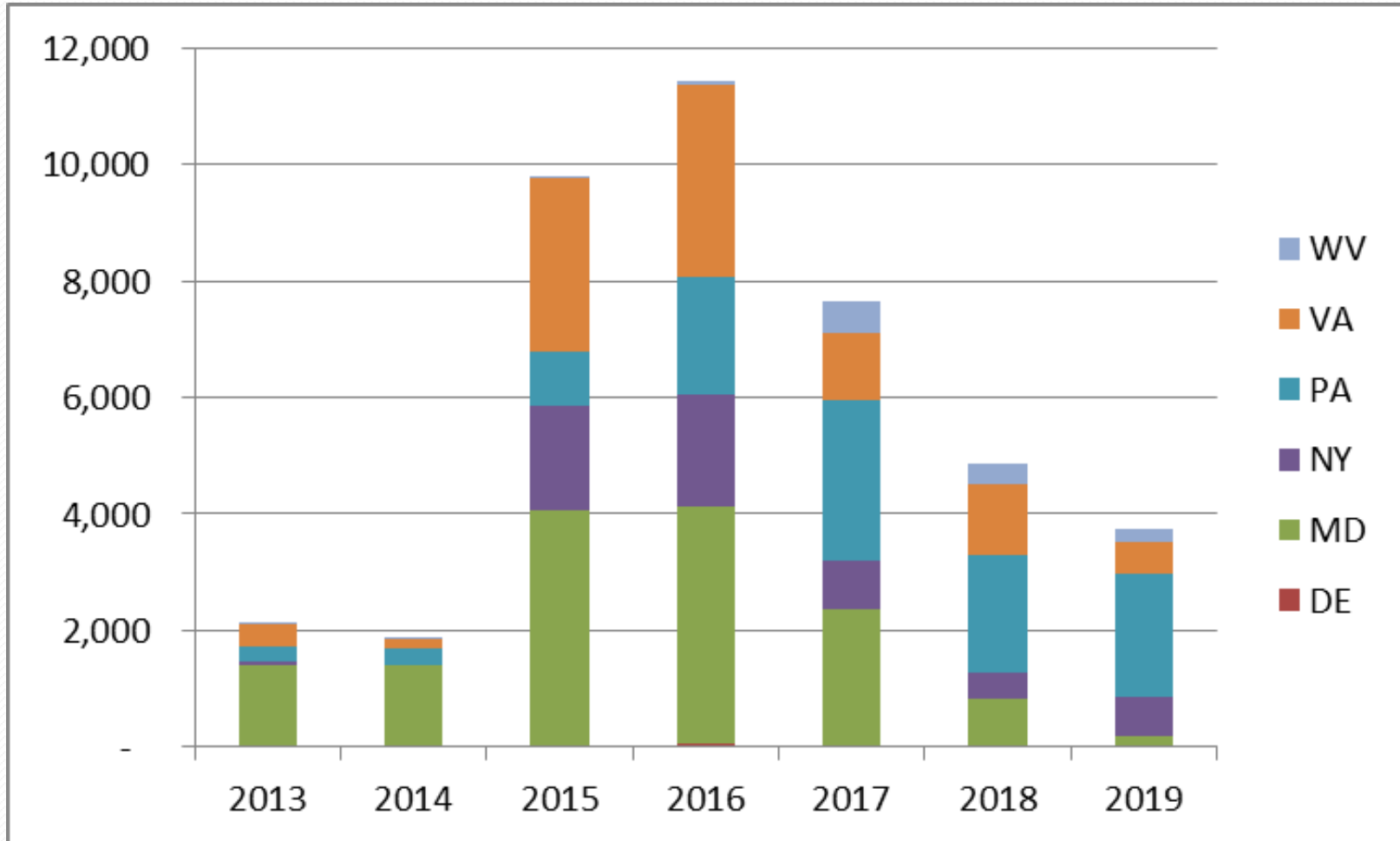
* 25% of the counties achieved 75% of the buffer acres restored

Acres of Buffers



Emerging Issue: Expiring Contracts

CP-22 Acres expiring 2013-2019



Data Source: USDA Farm Services Agency