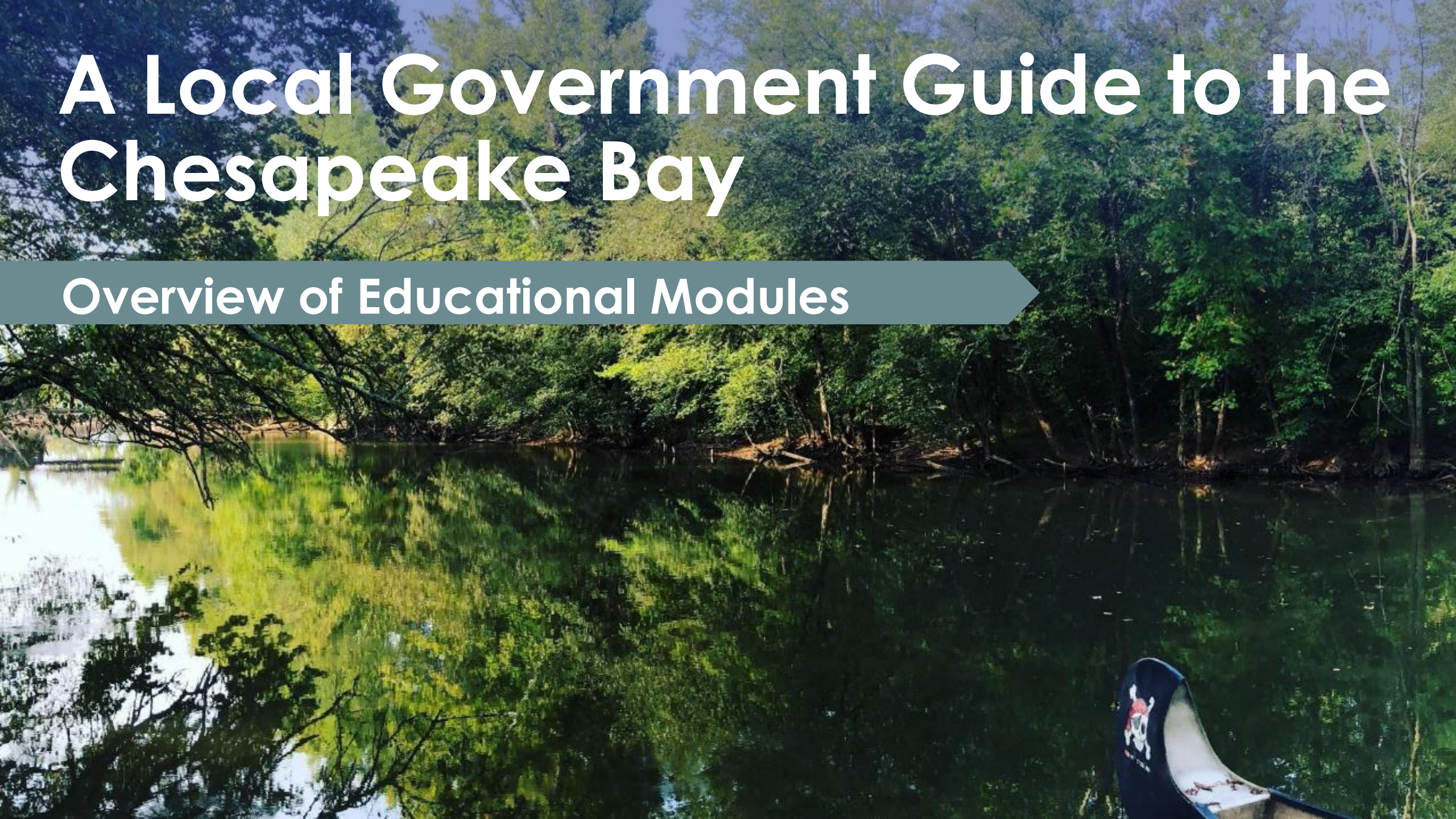


# A Local Government Guide to the Chesapeake Bay

## Overview of Educational Modules

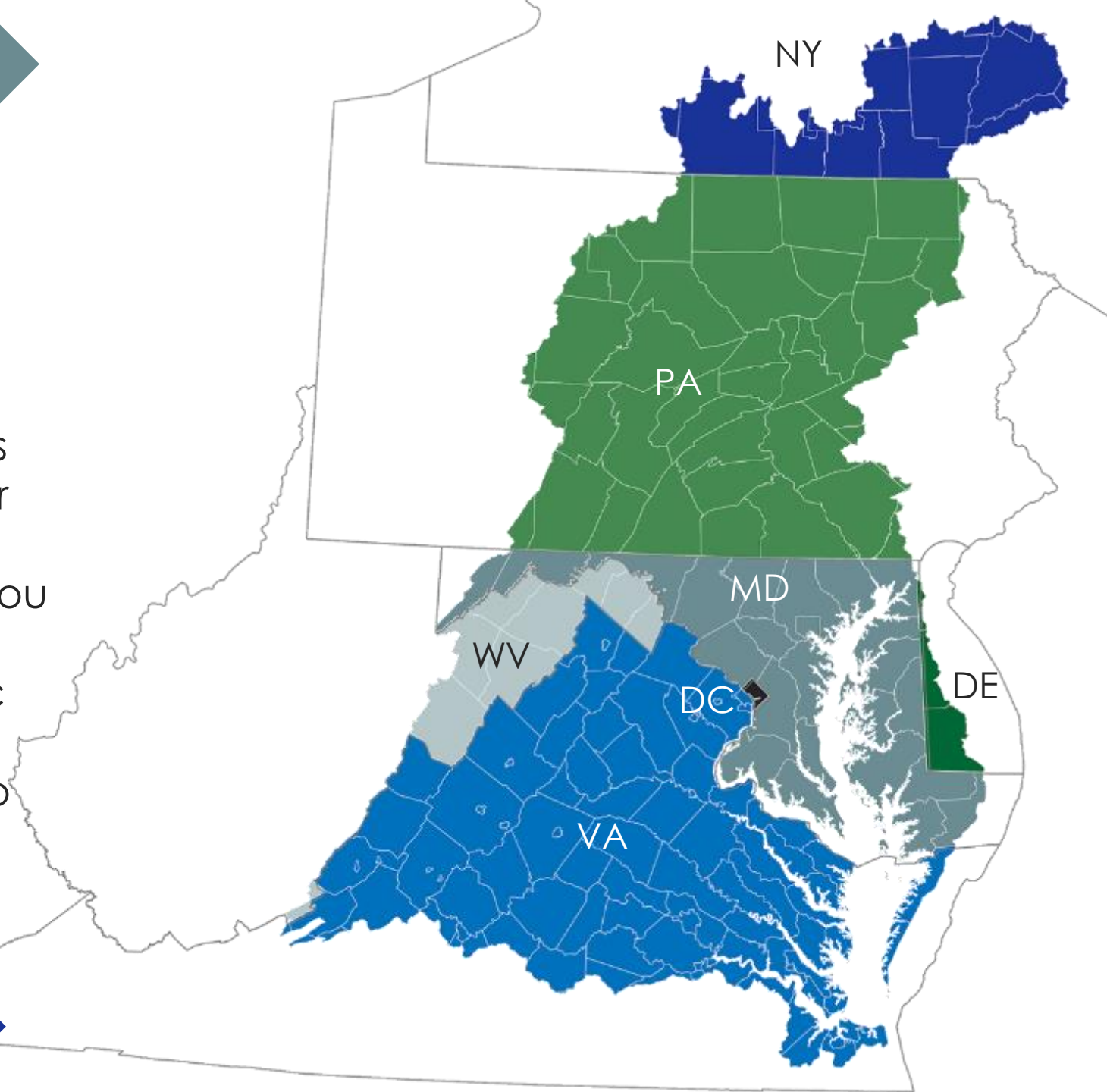




# Empowering local decisions

**A Local Government Guide to the Chesapeake Bay** is a series of seven educational modules to inform and empower decision at local levels.

As a local leader, *your decisions set the course for your community*. Your actions determine the health and vitality of your jurisdiction, as well as that of your local waterways and the Chesapeake Bay. You can achieve mutually beneficial outcomes by prioritizing local economic development, infrastructure resiliency, public health, and education, while also protecting your environment.



Modules Overview

Local Leaders

# About the modules

Developed as self-guided, very visual PowerPoint presentations. Each module is under 30 slides, designed to be easily customized and shared, along with a companion one-page handout. The icons below represent key local government priorities and are used throughout the modules to help you better understand how the information in the modules aligns with your specific priorities and interests.



Economic Development



Public Health & Safety



Infrastructure Maintenance  
& Finance



Education

Modules Overview

About





# Overview of Modules

Each module consists of a customizable presentation, one page handout, a .pdf and video versions of the presentation. In addition to the module themes below, we have included connections to Diversity, Equity, Inclusion, and Justice, and Climate throughout the modules. Each features an overview of the full list of modules and a bottom of slide tracker.



## 1. How Your Watershed Works

Foundational knowledge of the Chesapeake Bay watershed and water cycle and connects the importance of a healthy watershed to the economic development, public health and safety, infrastructure maintenance and finance, and education priorities of local government officials.



## 2. Foundations of Clean Water

An overview of the laws and agreements relevant to protecting and restoring the Chesapeake Bay. These protections are the foundations for healthy local waterways across the region.



### 3. Clean Water for the Economy

Highlights the economic importance of clean water and healthy habitats to lucrative fisheries, like blue crab and oyster, and recreational activities, like hunting, bird watching, and fishing.



### 4. Capitalizing on the Benefits of Trees

Presents how tree canopy, forest buffers, and forest conservation can provide a broad spectrum of benefits for local communities, from economic development to significant public health and safety benefits.



### 5. Preserving Local Character and Landscapes

Highlights the economic, ecological, cultural, and recreational value of the conserved landscapes around the Chesapeake Bay watershed to the people and communities of the region. Conserving these landscapes protects water quality, quality of life, and the many community values associated with these lands.



## 6. Protecting Community Infrastructure Through Stormwater Resiliency

An overview on how managing stormwater runoff and increasing resiliency can mitigate flooding and flood-related damages to local community infrastructure, while also improving water quality.



## 7. Building the Workforce of Today and Tomorrow

Highlights the growth in stormwater management and green infrastructure projects and the importance of educating a strong and diverse workforce in operating and maintaining projects.

# Module Features

The modules are developed to be cohesive but can be taken any order. For consistency, each identifies learning objectives, local case studies, and resources for local implementation.

- **What You'll Learn** - learning objectives and questions that will be answered throughout the module.
- **What You Can Do** - actionable items to engage your community and where applicable, financial assistance to support local actions.
- **To Learn More** - additional resources for further learning about each of the module topics.

Each module references a variety of statistics and data to support its learning objectives. **Reference sources** for statistics, data, and photos can be found along with photo credits within the notes for each of the individual slides. **Glossaries** defining keywords can also be found at the end of each module.

### What You'll Learn

What is the Chesapeake Bay Program and how did it begin?


What governs watershed protection and restoration efforts?

How is the health of the Bay connected to jobs and human health?

What can I do to make my local waterways healthier?


Foundations of Clean Water > What You'll Learn

### What You Can Do




**Reduce impervious surfaces in your jurisdiction** to reduce pollutants entering your local waterways. Use these EPA resources to get started:

- [The Green Infrastructure Knowledge Landbank](#)
- [Empowering Sustainable Communities With Green Infrastructure](#)
- [Local Weather Policy Integration: A Roadmap for Community-Based Stormwater Solutions](#)




**Plant trees and preserve forested areas.** Trees provide a wide array of community and ecosystem benefits.




**Invest in environmental education and projects within your school systems** to provide dividends in citizen stewardship, community health, and clean water protections.

- EPA provides \$1 to \$5 million in grants to local agencies funding such work. [Learn more here.](#)



**Lead your community** to achieve environmental and local government goals by exploring technical and funding resources like grants from the [National Fish and Wildlife Foundation](#), EPA, and your state.



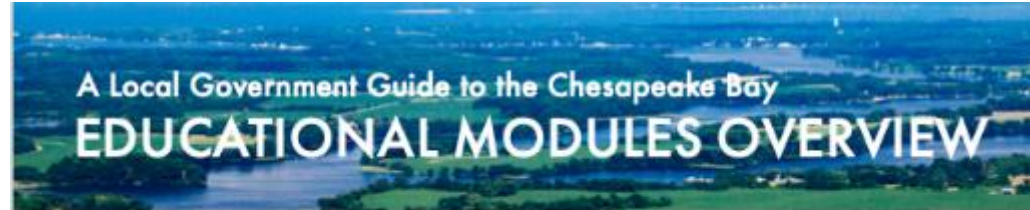
**Share this information with others** to create an even stronger, more resilient community.

### To Learn More

- Chesapeake Bay Commission's [40th Anniversary Webinar recording and presentation](#)
  - Learn about the history of the Chesapeake Bay watershed protections
- Chesapeake Bay Program's [Restoring the Chesapeake Watershed](#)
  - Hear a brief overview of the formation and progress in this five-minute video
- Chesapeake Bay Program's [Understanding Chesapeake Bay Modeling Tools: A history of updates, governance, policy and procedures](#)
  - Explore TMDLs, the Chesapeake Bay Watershed Model, and more in this short document
- [The EPA Administrators: Looking back at 50 years of environmental protection](#)
  - Hear EPA administrators throughout history talk about their time at the EPA in a 7-minute video



# Overview One Pager



**A Local Government Guide to the Chesapeake Bay** is a seven-module series created by the Chesapeake Bay Program to support decision making by local officials. As a local leader, your decisions set the course for your community. Your actions determine the health and vitality of your jurisdiction, as well as that of your local waterways and the Chesapeake Bay, which spans more than 64,000 mi<sup>2</sup> and includes seven jurisdictions. You can achieve mutually beneficial outcomes by prioritizing local economic development, infrastructure resiliency, public health, and education, while also protecting your environment.

## ABOUT THE MODULES

Each module is a self-guided PowerPoint presentation, designed to be easily customized and shared. The icons below represent key local government priorities and are used throughout the modules to help you better understand how the information in the modules aligns with your specific priorities and interests.

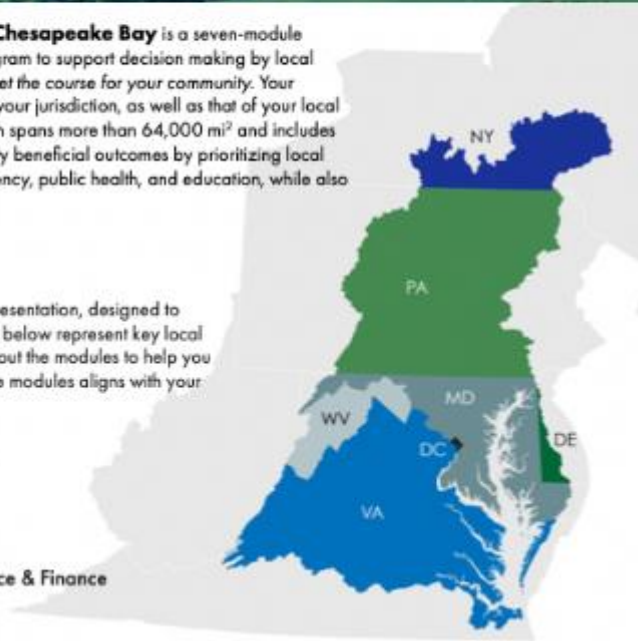
-  Economic Development
-  Public Health & Safety
-  Infrastructure Maintenance & Finance
-  Education

## HOW TO USE THE MODULES

Each module is a self-guided PowerPoint presentation, designed to be easily customized and shared. All modules contain the slides listed below to identify learning objectives, local case studies, and resources for local implementation.

- **What You'll Learn** provides learning objectives and questions that will be answered throughout the module.
- **What You Can Do** identifies actionable items to engage your community and where applicable, financial assistance to support local actions.
- **To Learn More** provides additional resources for further learning about each of the module topics.

Each module references a variety of statistics and data to support its learning objectives. **Sources** for any referenced statistics, data, and photos can be found within the notes for each of the individual slides. A **glossary** defining keywords can also be found at the end of each module.



## A Local Government Guide to the Chesapeake Bay EDUCATIONAL MODULES OVERVIEW

The modules include the following:



### 1. How Your Watershed Works

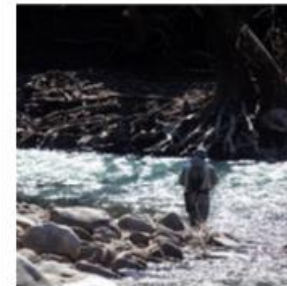
*How Your Watershed Works* provides foundational knowledge of the Chesapeake Bay watershed and water cycle and connects the importance of a healthy watershed to the economic development, public health and safety, infrastructure maintenance and finance, and education priorities of local government officials.

### 2. Foundations of Clean Water

*Foundations of Clean Water* provides an overview of the laws and agreements relevant to protecting and restoring the Chesapeake Bay. These protections are the foundations for healthy local waterways across the region.

### 3. Clean Water for the Economy

*Clean Water for the Economy* highlights the economic importance of clean water and healthy habitats to lucrative fisheries, like blue crab and oyster, and recreational activities, like hunting, bird watching, and fishing.



### 4. The Benefits of Trees

*The Benefits of Trees* explains how tree canopy, forest buffers, and forest conservation can provide a broad spectrum of benefits for local communities, from economic development to significant public health and safety benefits.

### 5. Preserving Local Character and Landscapes

*Preserving Local Character and Landscapes* highlights the economic, ecological, cultural, and recreational value of the conserved landscapes around the Chesapeake Bay watershed to the people and communities of the region. Conserving these landscapes protects water quality, quality of life, and the many community values associated with these lands.



### 6. Protecting Community Infrastructure Through Stormwater Resiliency

*Protecting Community Infrastructure Through Stormwater Resiliency* provides an overview on how managing stormwater runoff and increasing resiliency can mitigate flooding and flood-related damages to local community infrastructure, while also improving water quality.

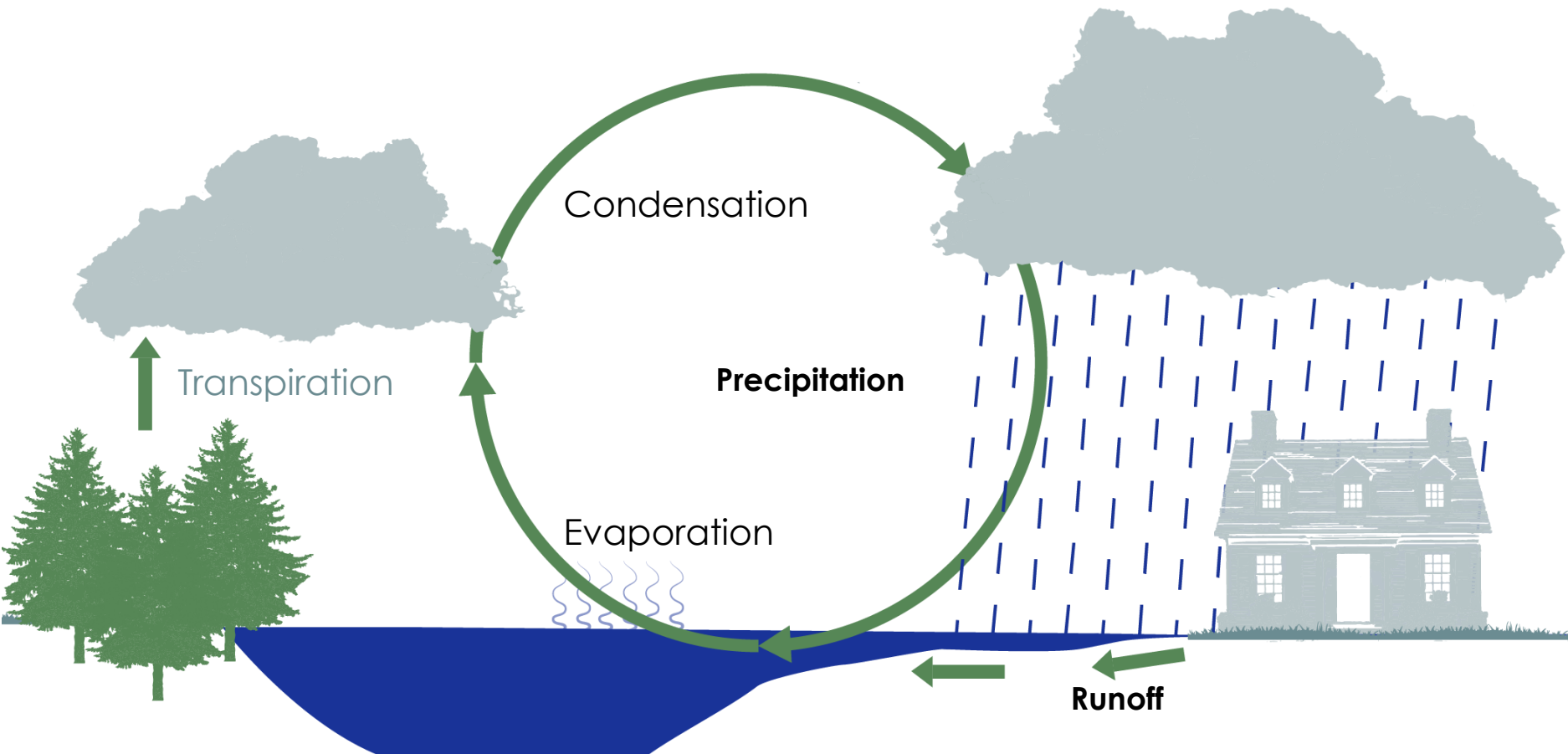
### 7. Building the Workforce of Today and Tomorrow

*Building the Workforce of Today and Tomorrow* highlights the growth in stormwater management and green infrastructure projects and the importance of educating a strong and diverse workforce in operating and maintaining projects.



# The Water Cycle

Clean water is essential for people. How water moves, and what it brings with it, is at the heart of community and watershed health. Let's start the water cycle as water evaporates from land and water. The water vapor cools and forms clouds through condensation. **Precipitation then falls on land and drains into the creeks, streams, and rivers that flow into the Bay.**



## Climate Connection

Warmer air holds more moisture which means more intense and frequent precipitation events as the climate warms. Increased rainfall has the potential to overwhelm waterways and stormwater systems, increasing flood and erosion risks. Rising sea levels and storm surge also increase flood and erosion risks.

# Outdoor Recreation

Nationally, outdoor recreation contributes:



**\$887 BILLION**

in consumer spending



**7.6 MILLION**

American jobs



**\$65.3 BILLION**

in federal tax revenue



**\$59.2 BILLION**

in state & local taxes

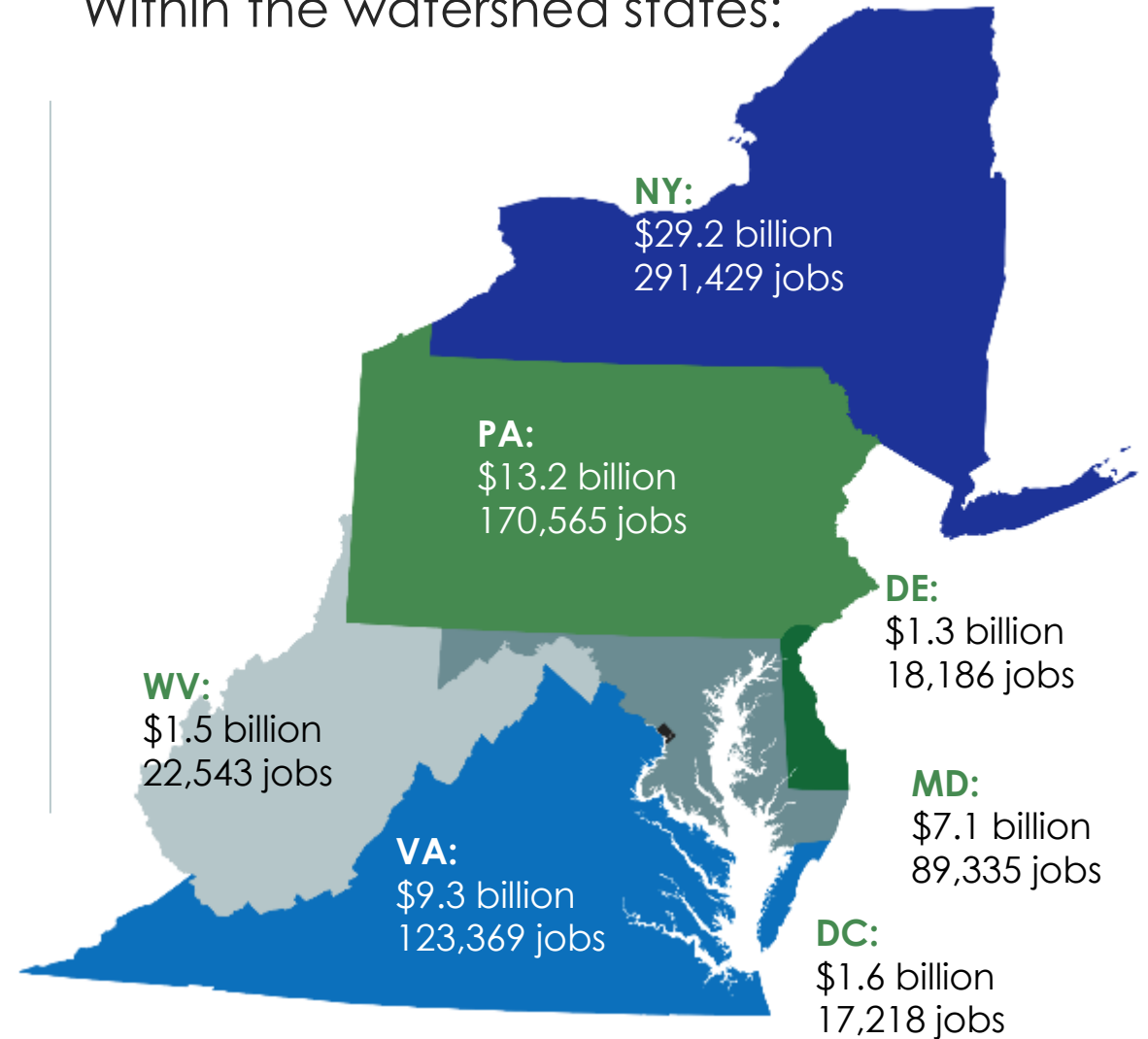
## Interpretive Outdoor Experiences

Outdoor recreation opportunities foster a more meaningful connection with nature. Nature centers and environmental educators play important roles in inspiring an appreciation for nature, which leads to more stewardship.

Clean Water for the Economy

Healthy Habitats, Healthy Economy

Within the watershed states:





# Tree Canopy

Tree canopy is the area of the leaves of a tree or group of trees when viewed from above. Chesapeake watershed communities now have access to highly detailed data, tools, and maps of tree canopy to determine how much they have and help set goals for the future.

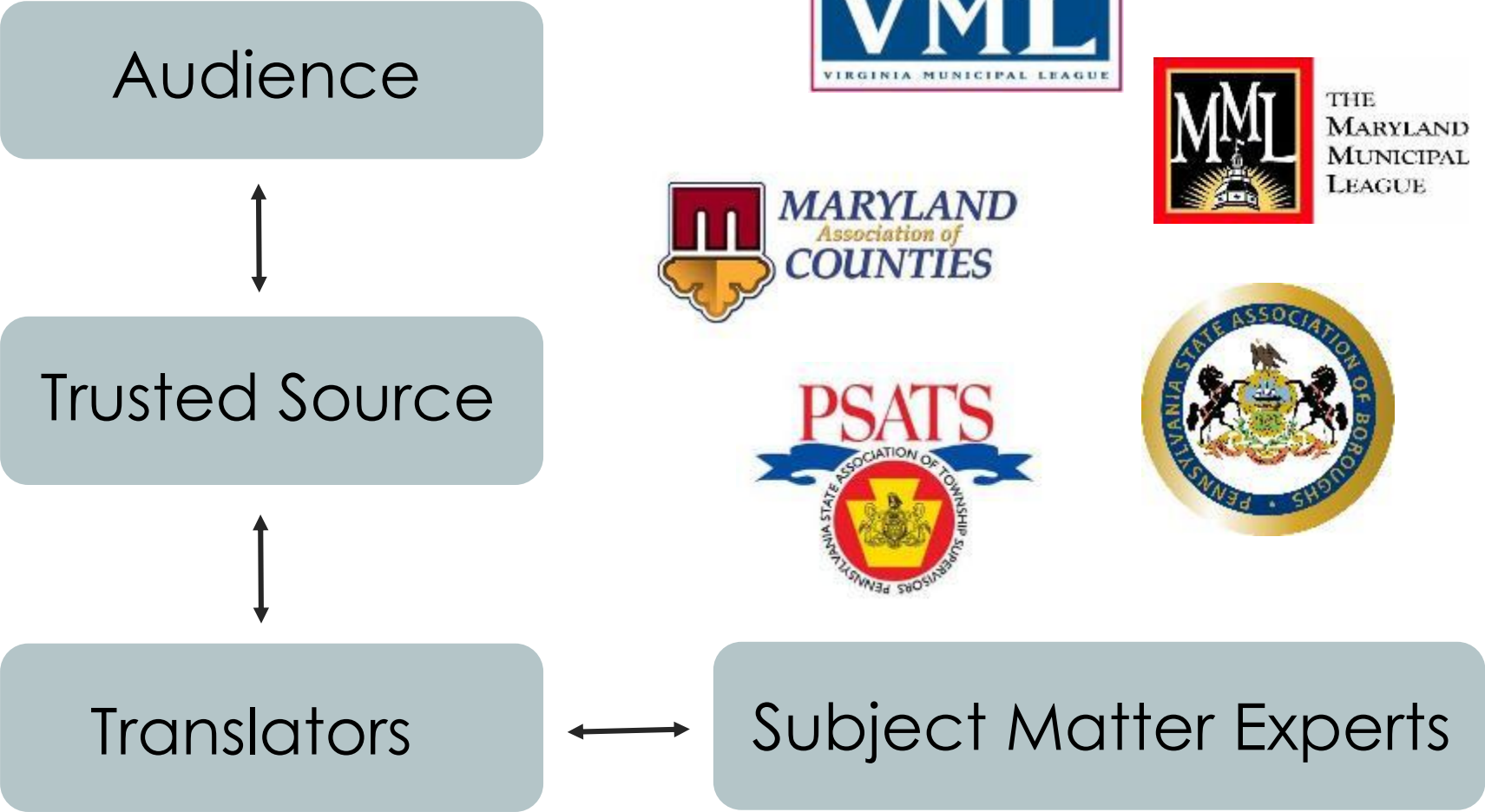


Watch this video from the Forest Service to learn more.

$$\begin{array}{ccccccc} \text{Achieving a} & & & & & & \\ \text{tree canopy} & & & & & & \\ \text{goal} & = & \text{Existing} & + & \text{Planting} & + & \text{Growth} & - & \text{Losses} \\ & & \text{canopy} & & & & \text{(protection \&} & & \text{(mortality,} \\ & & & & & & \text{maintenance)} & & \text{removal, etc.)} \end{array}$$

To achieve a tree canopy goal, taking care of your existing trees is just as important as planting new trees. To learn more, visit <https://chesapeaketrees.net/understand-your-canopy/>.

# How can the modules being used?





## How are the modules being used?

- **Conference Panel Handouts**
  - *Ex. County Commissioners Association of Pennsylvania Aug 9th Panel on “The Outdoor Recreation Economy”*
- **Presentation Slides**
  - *Ex. Rivanna River Basin Commission Conference Sept 24th on Stormwater Resilience*
- **Handbook for Local Governments**
  - *Ex. Delaware tailored the materials for their local officials and are sharing them via town managers in an educational series*



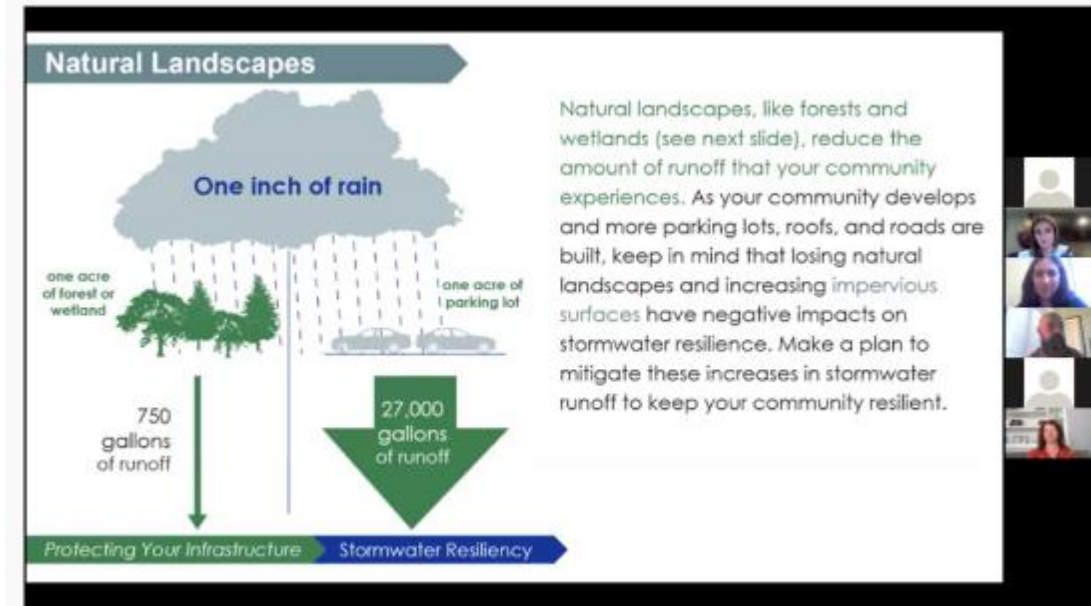
# How are the modules being used?

- **Magazine Article**

- *Ex. Resource listed in article in May 2021 Boroughs Magazine (Pennsylvania State Association of Boroughs)*

- **Local Government Professional Development Course**

- *Ex. Maryland Municipal League and Maryland Association of Counties elective course on “How Your Watershed Works” on Nov 4th*





# Impact to Date

- **300+ people** have accessed the editable versions of the modules
- Modules have been utilized in **Delaware, Maryland, New York, Pennsylvania, and Virginia**
- Modules have directly reached an estimated **1,500 local government officials and staff**



A close-up photograph of a person's face in the background, slightly out of focus. In the foreground, a blue crab is being held by a hand wearing a bright blue nitrile glove. The crab's carapace is a vibrant orange-brown color, and its legs are a pale blue-grey. The background is a plain, light-colored wall.

How could YOU use *A Local Government Guide to the Chesapeake Bay?*





**Laura Cattell Noll**

Local Government Projects Manager  
Alliance for the Chesapeake Bay

[lnoll@allianceforthebay.org](mailto:lnoll@allianceforthebay.org)



**ALLIANCE**  
for the Chesapeake Bay