



HARRY R. HUGHES CENTER FOR
AGRO-ECOLOGY, INC.



Chesapeake Bay Program
Science. Restoration. Partnership.

Activity 1 Team
BMP Opportunity Analysis Update
Sept 2021 CWIP Steering Committee

Topics

- Status update
- Needs from SC members
 - Support for gathering Parcel Data
 - Ideas for data layer overlays
- Schedule & delivery

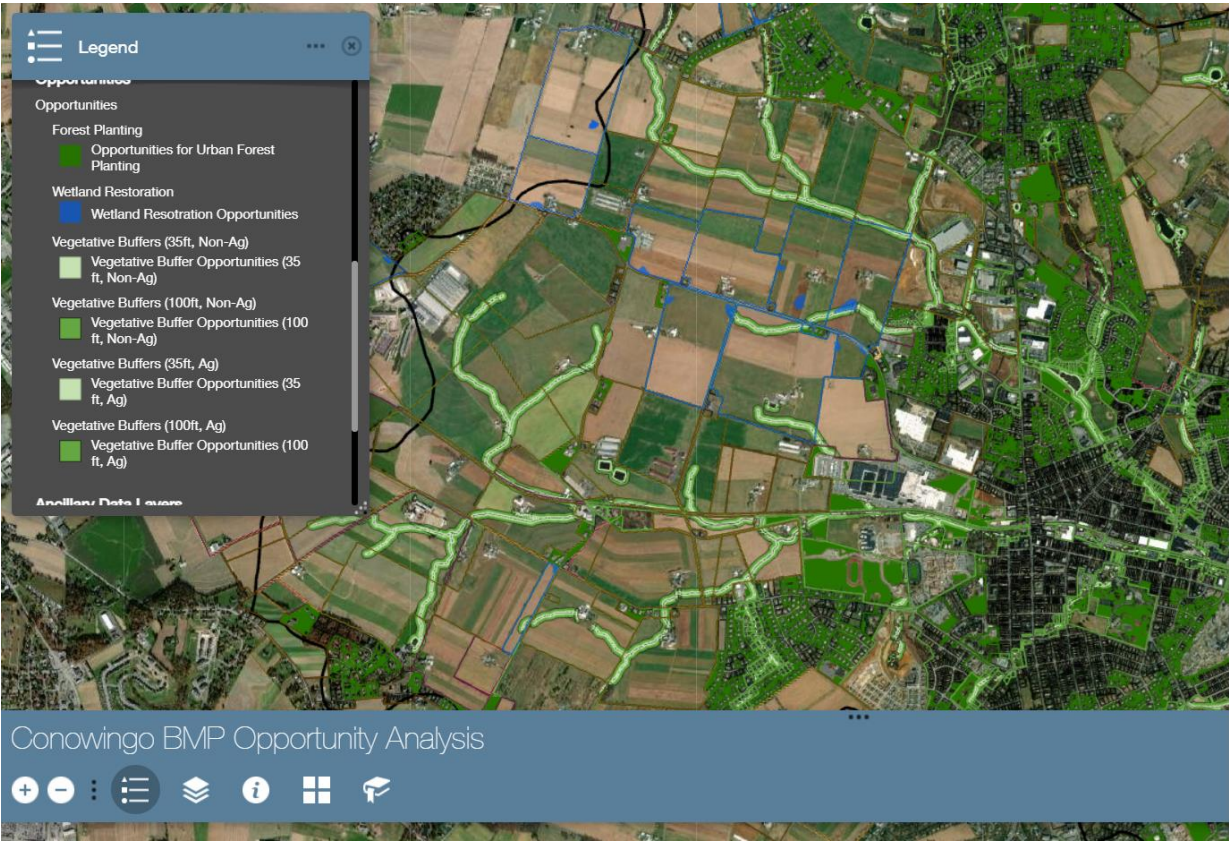
CWIP BMP Implementation Targets			
Practice	Duration	Unit	Amount
Agricultural Practices			
Nutrient Application Management Core Nitrogen	annual	Acres	223,000
Nutrient Application Management Rate Nitrogen	annual	Acres	624,000
Nutrient Application Management Placement Nitrogen	annual	Acres	207,000
Nutrient Application Management Timing Nitrogen	annual	Acres	626,000
Conservation Tillage	annual	Acres	216,000
High Residue Tillage	annual	Acres	48,000
Low Residue Tillage	annual	Acres	10,000
Prescribed Grazing	cumulative	Acres	84,000
Forest Buffers	cumulative	Acres in Buffers	20,000
Wetland Restoration	cumulative	Acres	12,000
Grass Buffers	cumulative	Acres in Buffers	21,000
Soil and Water Conservation Plan	cumulative	Acres	113,000
Manure Incorporation	annual	Acres	189,000
Barnyard Runoff Control	cumulative	Acres	600
Urban Practices			
Urban Forest Planting	cumulative	Acres	49,000
Urban Forest Buffers	cumulative	Acres	17,000

Status of BMP Opportunity Analysis

1. Finalize GIS methodology
 - a. Definition: Project-scale mapping of where a BMP could potentially be implemented based on remotely-sensed landscape conditions
 - b. Pilot methodology presented at Aug SC meeting
 - c. Input from SC members & technical staff from MD, PA, and VA: scheduling polls sent out for meetings by Sept 24
 - d. Finalize methodology with approval from SC & EPA; scale to entire CWIP geography
2. Deliver completed analysis
 - a. Decide actionable products for planning support (online map resources, summary spreadsheets, etc)
 - b. Delivery in coordination with MD, PA and VA SC members
3. Support for Milestone planning
 - a. Compare with local WIPs & Countywide Action Plans
 - b. Set feasible implementation goals

Overview of BMP Opportunity Analysis

BMP Name	What does the analysis tell us?			What are the features in the Web Viewer?	
	Locations that are potentially suitable for new BMP implementation	Locations where the BMP is potentially already implemented ²	Locations that may be suitable for BMP, no distinction between whether the BMP has or has not been implemented	BMP footprint. Displayed in the Web Viewer under the "Opportunities" group.	Parcels that potentially contain BMP opportunities. Displayed in the Web Viewer under the "Parcels with Opportunities" group.
Agricultural Practices					
Prescribed Grazing (cumulative)	N/A	N/A	Lands identified as pasture in 2017/2018 LU classification.	Footprints not included. Auxiliary datasets provided for pasture.	Layer name: <u>Prescribed Grazing</u>
Forest Buffers Grass Buffers (cumulative)	Areas of turf, low vegetation ¹ , or wetlands on ag lands within 35 ft or 100ft. of a waterway. See note.	Areas on ag lands within 35ft or 100ft. of a waterway that are classified as forest ¹ . See note.	All areas within 100ft. of a waterway fall into one of the other two categories.	Footprints included. Layer name: <u>Vegetative Buffers</u>	Layer name: <u>Vegetative Buffers (35 ft and 100 ft. Ag)</u>
Wetland Restoration (cumulative)	N/A	N/A.	Depressions on agricultural land meeting minimum conditions for hydric soils, depth, and area.	Footprints included. Layer name: <u>Wetland Restoration</u>	
Manure Incorporation (annual)	N/A	N/A	Any contiguous cropland of at least 10,000 square feet.	Footprints not included.	Layer name: <u>Manure incorporation</u>



Contact Katie Walker (kwalker@chesapeakeconservancy.org) to access the methodology report of BMP Opportunity viewer.



Discussion - Parcel Data Needs

- **Need:** Cooperation of localities on accessing parcel data for the analysis
- **Discussion:** Parcel data as part of a deliverable.

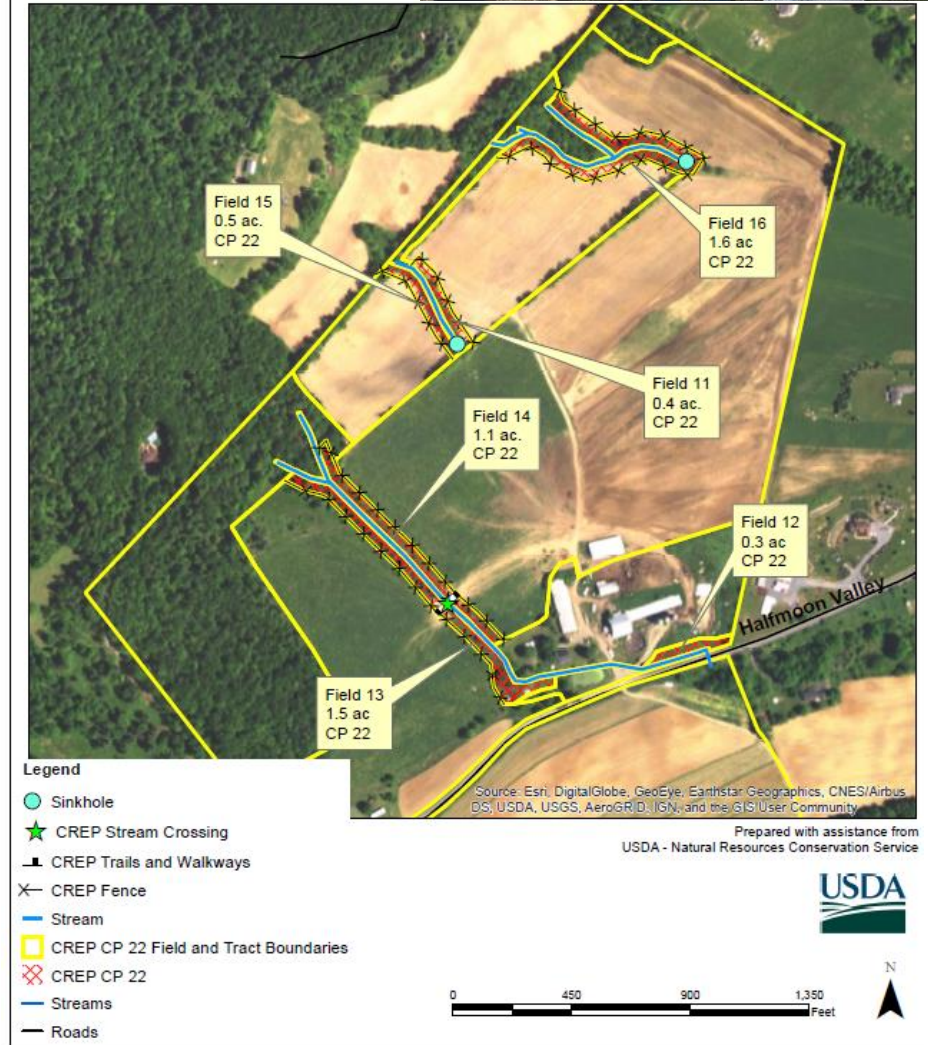
Examples: spreadsheets with lists of parcels with owner names, addresses, & associated BMP opportunities; parcel boundaries in online map, pop-up boxes with identifying info.

- actionable scale for building and identifying projects
- efficient & collaborative outreach plans
- supports project design and multi-BMP planning
- supports parallel planning for additive benefits



Farm Tour. Credit: Chesapeake Conservancy

CREP CP 22 Acres: 6.4
Farm: 177 Tract: 68

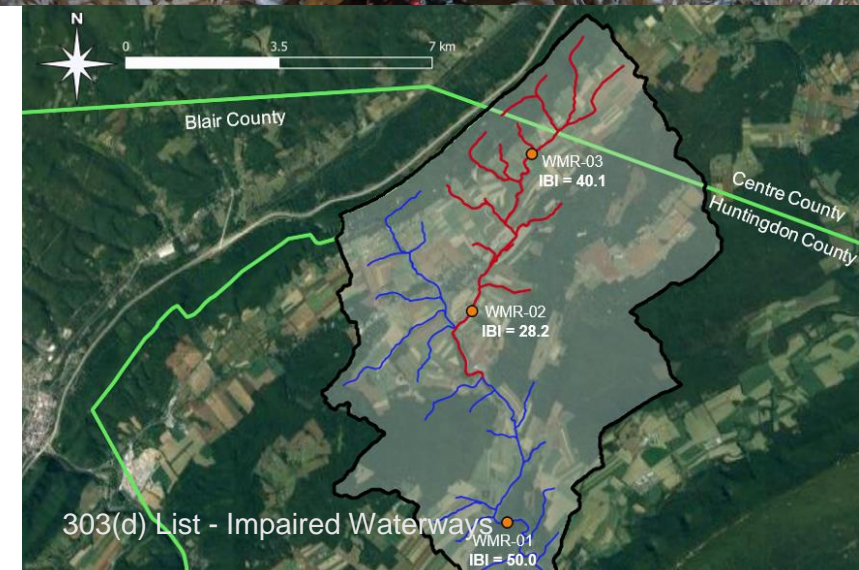


Discussion - Overlays

- Need:
 - List of data layers to add to the mapping deliverable as an overlay.
 - Email to Katie Walker:
kwalker@chesapeakeconservancy.org
 - Include if possible:
 - Shapefiles
 - Links to download
 - Descriptive language to include
 - Recommended citation
- Why:
 - Opportunities to complement local priorities



Brook Trout. Credit: Frank Rohrer



Flooding - Credit: Lancaster Clean Water Partners

CWIP Milestone Planning & key decision points

Proposed Schedule:

- August 2021 CWIP Approval
 - Work with EPA to develop timeline for evaluating/implementation methodology
 - *two weeks after EPA approval of methodology, complete BMP County Opportunity Analysis - assumes NO CHANGE to methodology*
 - NY - one group
 - PA - Tier 3/4 County Groupings (ten groups)
 - MD - one group
- August/September 2021 Webinar to Share Final CWIP
- September 2021 Draft Numeric and Programmatic Milestones to SC
 - Requires comparison of jurisdictional WIPs and CAPs to CWIP
- September/October 2021 Outreach
 - In-person or web-based regional engagement meetings to solicit input on draft two-year milestones
 - Roll out of BMP Opportunity Analysis with support to local stakeholders on the data tools produced to support planning of projects to implement the CWIP
 - Develop and, with guidance from SC, disseminate information regarding CWIP milestones and delivering technical tools
- November 15, 2021 Second/final draft milestones to SC
- December 15, 2021 Final draft milestones to PSC
- January 15, 2022 Final draft milestones to EPA