



HARRY R. HUGHES CENTER FOR
AGRO-ECOLOGY, INC.

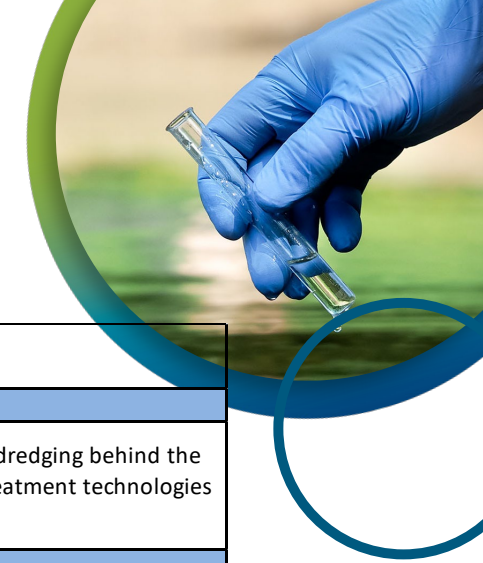


Chesapeake Bay Program
Science. Restoration. Partnership.

CWIP Activity 1 Team Update

**Steering Committee Meeting
October 14, 2022**

2022-2023 CWIP Milestones – Activity 1 Lead



Action Item	Target Date	Milestone (WIP page reference)	Deliverable	Lead Agency	Comments/Status Updates
Fostering Innovation					
11	Ongoing	Explore contingency plans and opportunities as needed. (p. 48) Re-evaluate Tier II BMPs that are currently under expert review (p.26)	Annual report; re-running CAST scenarios as needed.	Act 1, CBPO	This includes current initiatives to close science gaps related to dredging behind the Conowingo dam, freshwater mussel restoration, and manure treatment technologies as viable and creditable BMPs.
Identifying and Building Partnerships					
12	Ongoing	Forming, tracking, and developing cooperative or informal agreements with partners in the Susquehanna River watershed to further CWIP goals and implementation. (p.13)		SC, Act 1,2,3	<i>Includes mussel collaboration.</i>
Pilot Project Development and Implementation					
13	Fall 2022	Identify and scope/ one or more implementation pilot projects to achieve numeric CWIP goals.		Act 1, 2, 3	This includes refined implementation targeting in cooperation with the SC and the BMP Opportunity Analysis tool to narrow targeting within the most-effective basins, as identified in the CWIP, to identify locations where a pilot project may be implemented and necessary funding/resources pursued.
Outreach/Engagement					
15	Spring 2022	Providing support to stakeholders to support implementation and the tracking verification and reporting. (p. 22)	Up to 12 training sessions. Written and recorded tutorial.	Act 1, 3	These training sessions will be scheduled to occur virtually and, when possible, in person across the Susquehanna River watershed. Invitees may include, but are not limited to, CAP coordinators in PA, Agency staff from the three implementing jurisdictions, and members of the Financing Authority (or proxy).
16	Fall 2022	Annual progress report, due to EPA on January 15, 2023. (p. 48)	Annual progress report	Act 1, 3	
17	Summer/Fall 2023	Reconvene stakeholders to evaluate progress and make recommendations on the next set of two-year milestones due January 15, 2024. (p. 22)	Up to 12 stakeholder meetings	Act 1, 3	Specific engagement strategies guided by SC members from each jurisdiction involved with implementation.
Numeric Milestones					
18	Dec-23	Implement practices sufficient to reduce at least 25% of the nitrogen reductions identified in the CWIP, or 1.675-million pounds.		CWIP	

Outreach – Octoraro Watershed

- Meetings held on July 11th and August 26th
- Next meeting: October 24th
- Willingness to participate.
- Questions about funding and timeframes.
- Interest in getting CWIP funding to use for match on RCPP projects.

Questions for Steering Committee from last meeting:

1. Crediting based on funding sources. If there is joint funding from CWIP and other sources, will there be some type of shared credits?
2. Availability of funding for maintenance and inspection of BMPs.



Upcoming Work Tasks

Progress Report

- Draft a Milestones progress report on the and share with Steering Committee by November 18th
- Receive feedback on the draft report at the Steering Committee meeting on December 12th
- Revise and submit progress report for review as necessary prior to due date of January 15, 2023
- Pending discussion at the December meeting, facilitate updating the milestones document in response to EPA's evaluation

Ongoing Work Tasks

Outreach

- Additional outreach to watershed groups in coordination with the Core Team
- Training on the CWIP

Technical Assistance / Technical Review

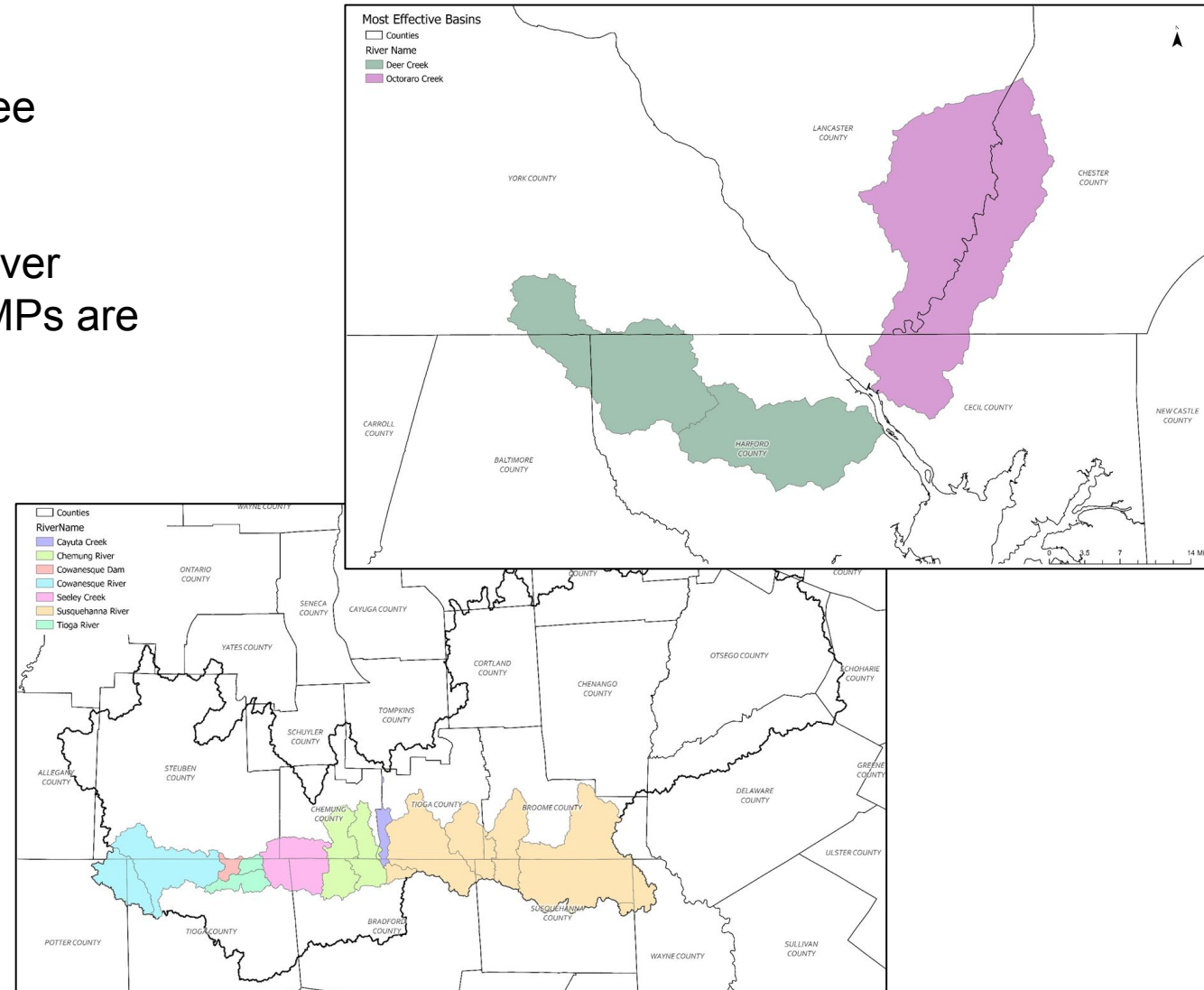
- Work with SRBC, watershed groups, project managers to provide technical assistance and to facilitate the implementation of projects to meet the CWIP goals

BMP Opportunity Analysis

- Update by Katie Walker, Chesapeake Conservancy

Status of BMP Opportunity Analysis

1. 9 pilot geographies have been identified (see graphics on right)
2. BMP opportunity analysis was re-run with 2017/2018 high resolution land use/land cover data that came out in May 2022. Re-run BMPs are listed below:
 - a. Annual Cropland Practices
 - Manure incorporation
 - Conservation tillage
 - Cover crops
 - b. Barnyard Runoff Control
 - c. Prescribed Grazing
 - d. Urban Forest Planting
3. Above 4 BMPs are ready for integration in watershed planning



Upcoming Activities for BMP Opportunity Analysis

1. We're continuing refining and expanding BMP opportunity analysis over the next several months, including:
 - a. Forest buffers
 - b. Grass buffers
2. Field trip coming up with Cecil Soil Conservation District, MD to educate Conservancy GIS staff on field-level designs for various BMP implementations (end of November)
3. Finalize online web viewer
4. Deliver BMP opportunity analyses to priority geographies



Contact Katie Walker (kwalker@chesapeakeconservancy.org) to access the methodology report of BMP Opportunity viewer.



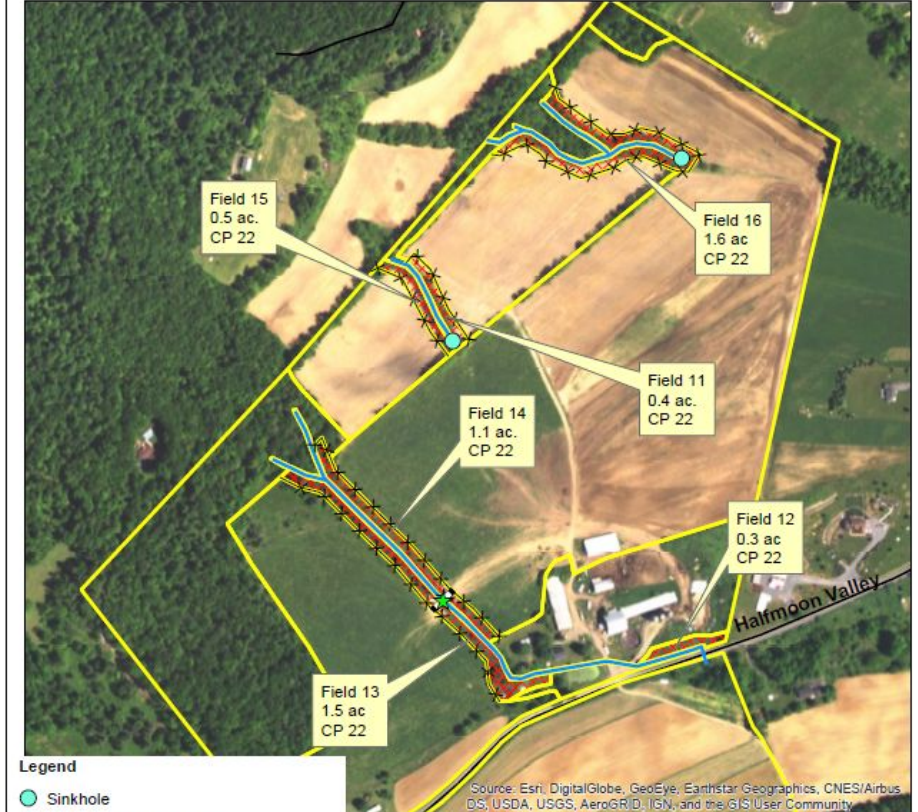
Discussion - Parcel Data Needs

- Data agreements are preventing us from getting access to parcel data for the following counties in PA:
 - Clinton
 - Columbia
 - Elk
 - Somerset
 - Sullivan
 - Susquehanna



Farm Tour. Credit: Chesapeake Conservancy

CREP CP 22 Acres: 5.4
Farm: 177 Tract: 68



Legend

- Sinkhole
- ★ CREP Stream Crossing
- CREP Trails and Walkways
- × CREP Fence
- Stream
- CREP CP 22 Field and Tract Boundaries
- × CREP CP 22
- Streams
- Roads

Source: Esri, DigitalGlobe, GeoEye, Earthstar Geographics, CNES/Airbus DS, USDA, USGS, AeroGRID, IGN, and the GIS User Community
Prepared with assistance from
USDA - Natural Resources Conservation Service



Discussion - Overlays

- Need:
 - List of data layers to add to the mapping deliverable as an overlay.
 - Email to Katie Walker:
kwalker@chesapeakeconservancy.org
 - Include if possible:
 - Shapefiles
 - Links to download
 - Descriptive language to include
 - Recommended citation
- Why:
 - Opportunities to complement local priorities

