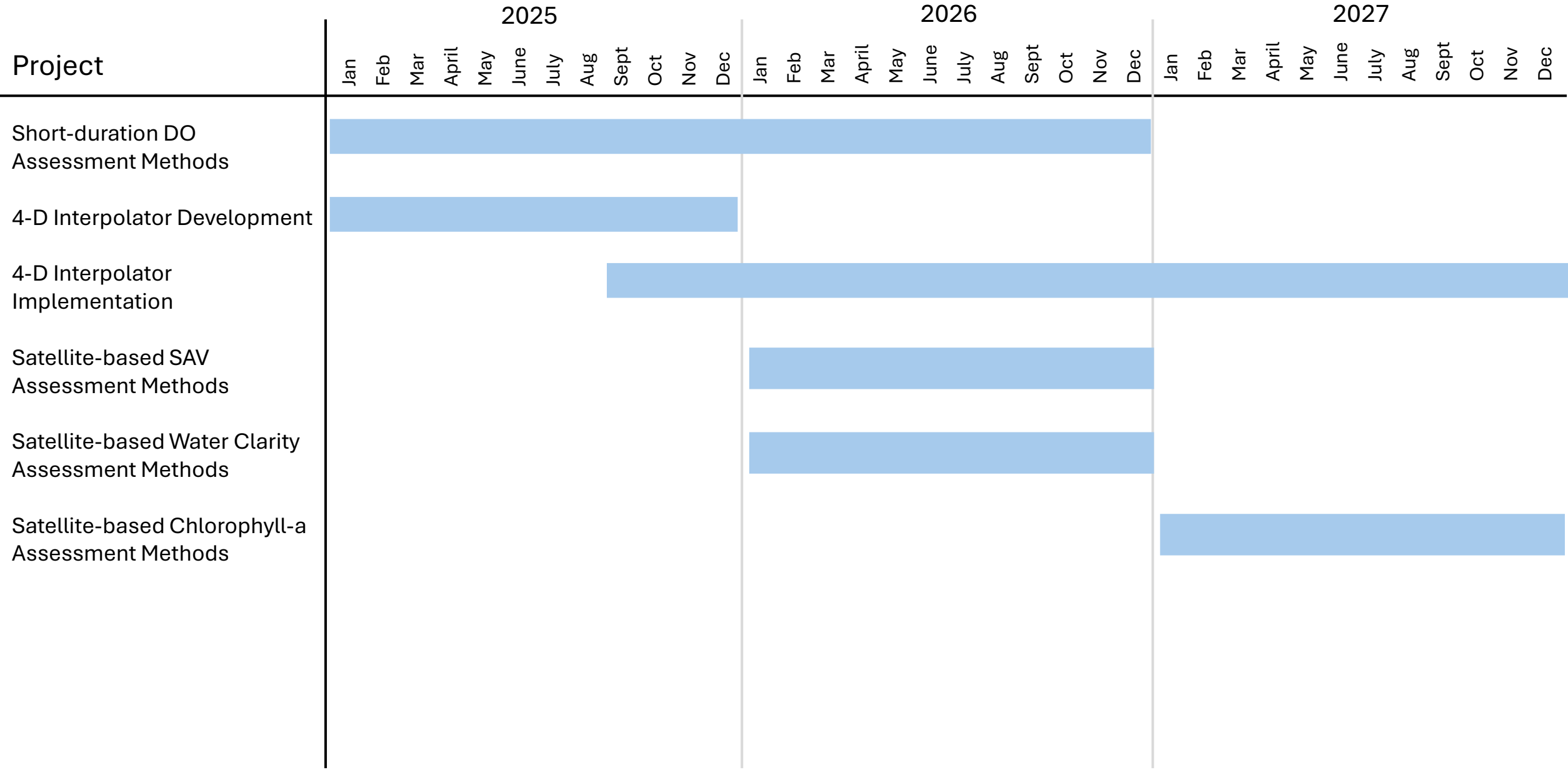


CBP Criteria Assessment Protocol Workgroup Project Timeline



Project Descriptions

- We may have a timeline for activities – e.g. , CAP WG will receive 4D assessment tool in 2027 and be trained in its use for 2028 and beyond.
- E.g., CAP WG will focus on interim methods with sufficient integrity to meet regulatory requirements for DO criteria attainment
- E.g., CAP WG will work to apply the new satellite-based methods for SAV assessments in Chesapeake Bay
- E.g., CAP WG will continue to work on satellite-based water clarity assessment developments with satellite based resources
- E.g., CAP WG will continue to evolve satellite-based CHLA assessments based on new research demonstrating ability to track CHLA conditions in the bay over decadal time frames
- And so on.