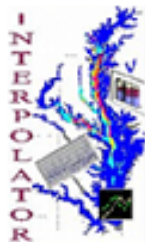


Chesapeake Bay Hypoxia/Anoxia status

Early Summer (June-July) 2015

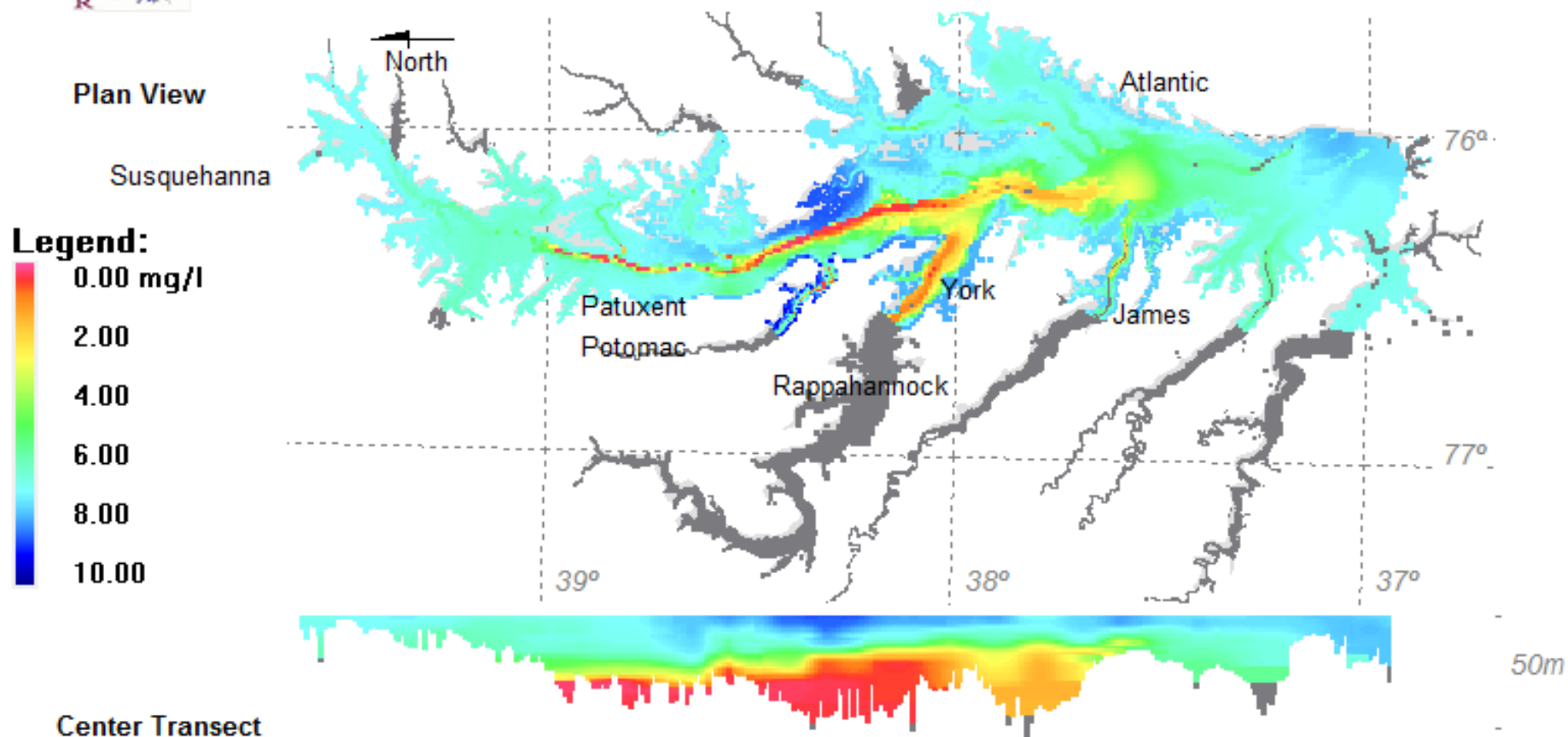
- ❖ **Data source:** Data from select MD/VA Chesapeake Bay monitoring sites - conducted annually since 1985
- ❖ **Output:** For each water monitoring cruise on the Bay, oxygen profile data from select Bay mainstem and tributary sites are used with a NOAA-Bay Program Interpolator program to:
 - generate a plan image of bottom oxygen levels in the mainstem Bay,
 - generate a profile image of oxygen distribution along the central channel of the Bay, and
 - estimate the volume of Maryland's portion of the mainstem Chesapeake Bay with oxygen levels that are too low (≤ 2 milligrams/liter) to fully support targeted aquatic life (e.g., fish, crabs, oysters)



CHESAPEAKE BAY

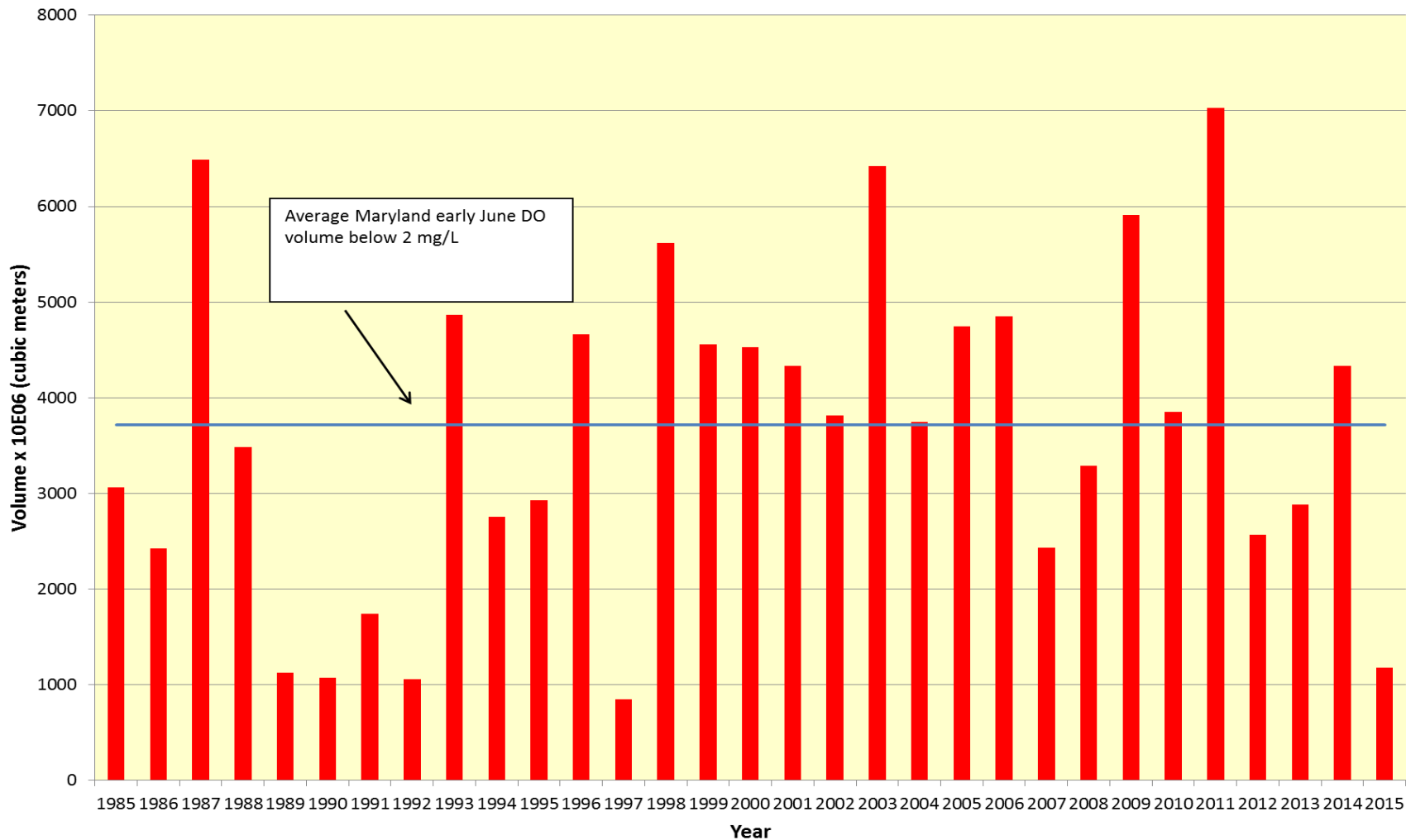
Planview Plot of Minimum Conditions

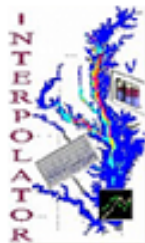
June 2015 Cruise - Jun 1, 2015-Jun 3, 2015



Comparison of Hypoxic-Anoxic volumes early June, 1985 - 2015

First June 2015 cruise dissolved oxygen volume
below 2 mg/L for the Maryland main Bay

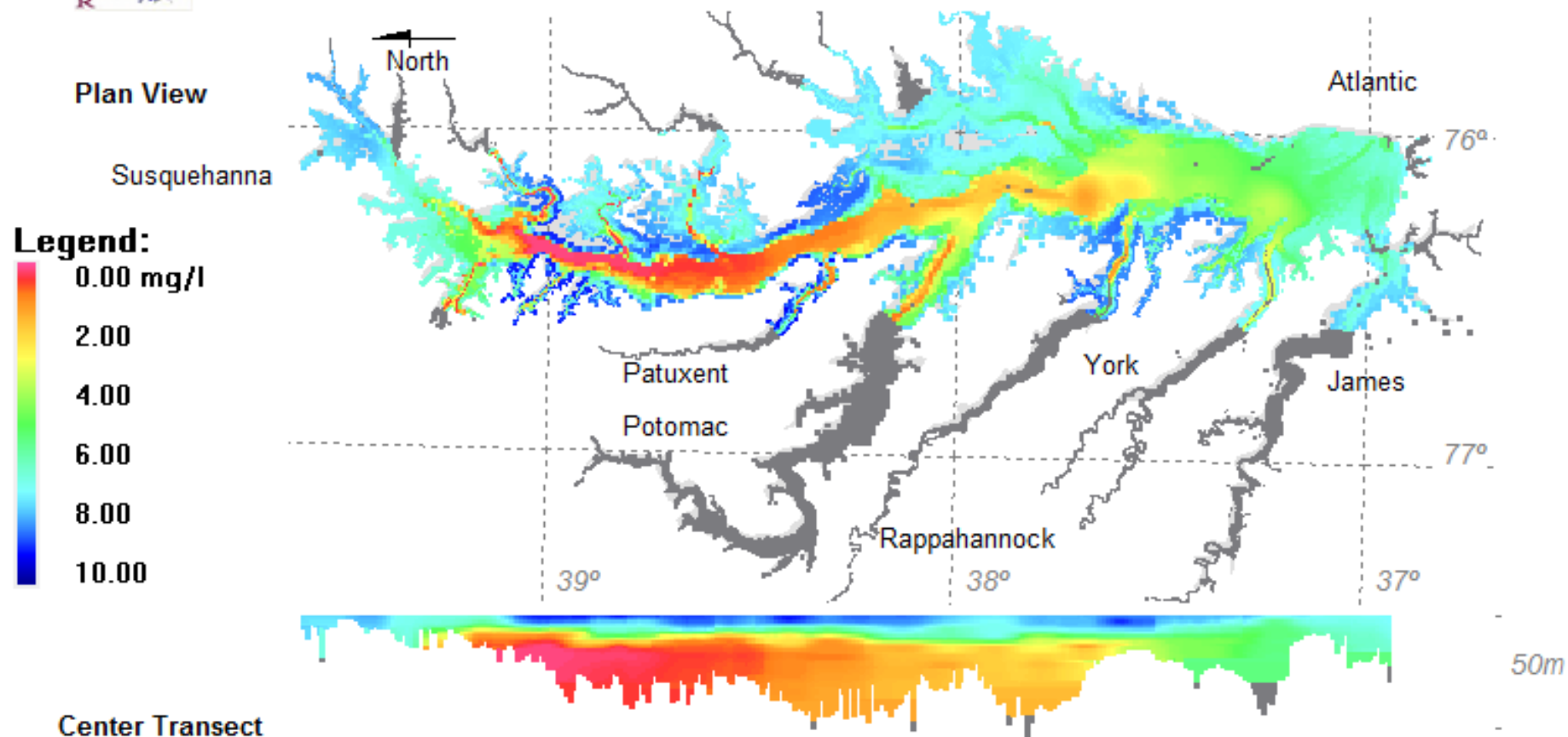




CHESAPEAKE BAY

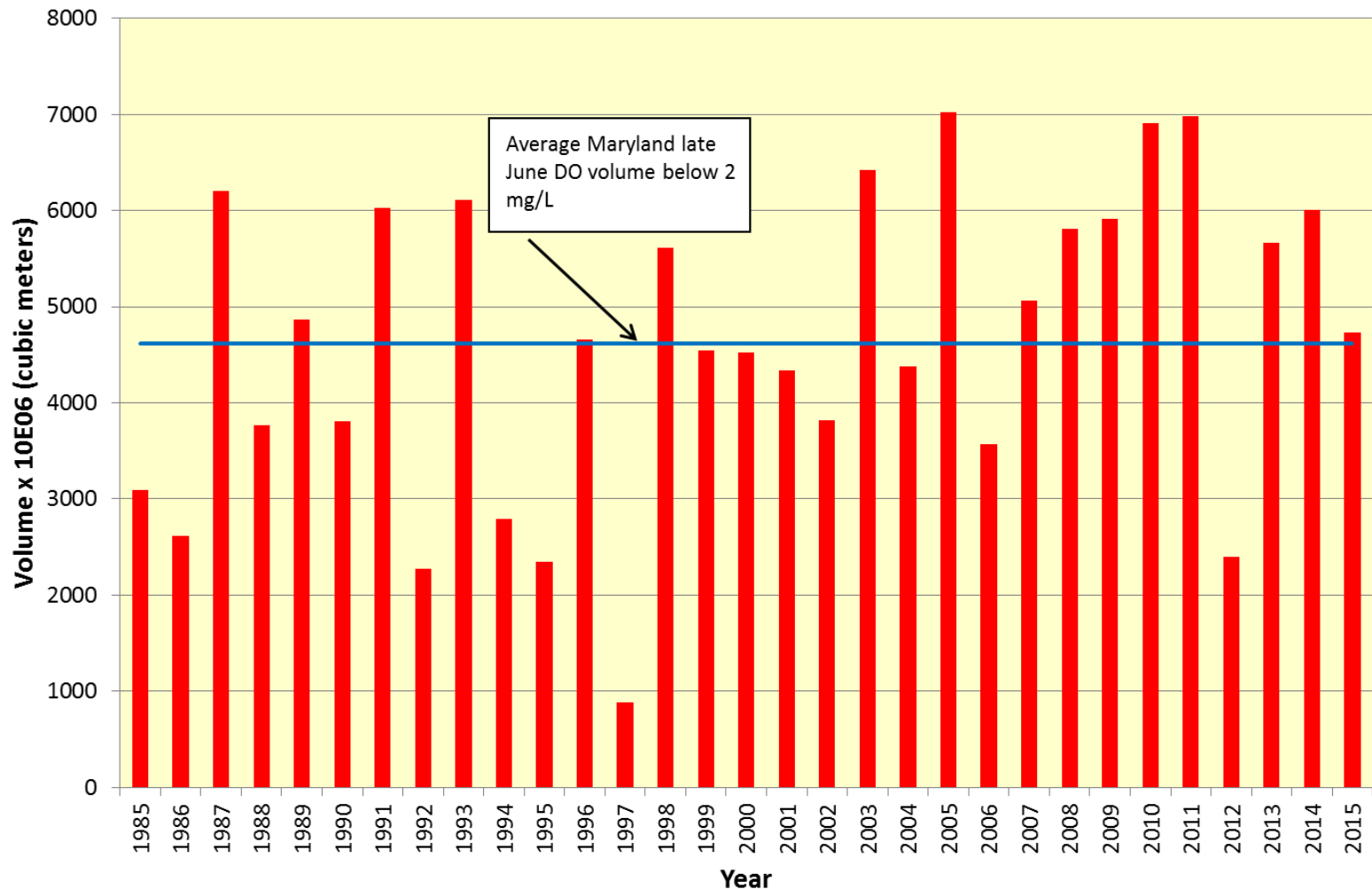
Planview Plot of Minimum Conditions

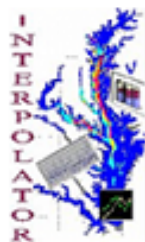
June 2015 Cruise - Jun 22, 2015-Jun 24, 2015



Comparison of Hypoxic-Anoxic volumes, late June, 1985 - 2015

Second June 2015 cruise dissolved oxygen volume
below 2 mg/L for the Maryland main Bay





CHESAPEAKE BAY

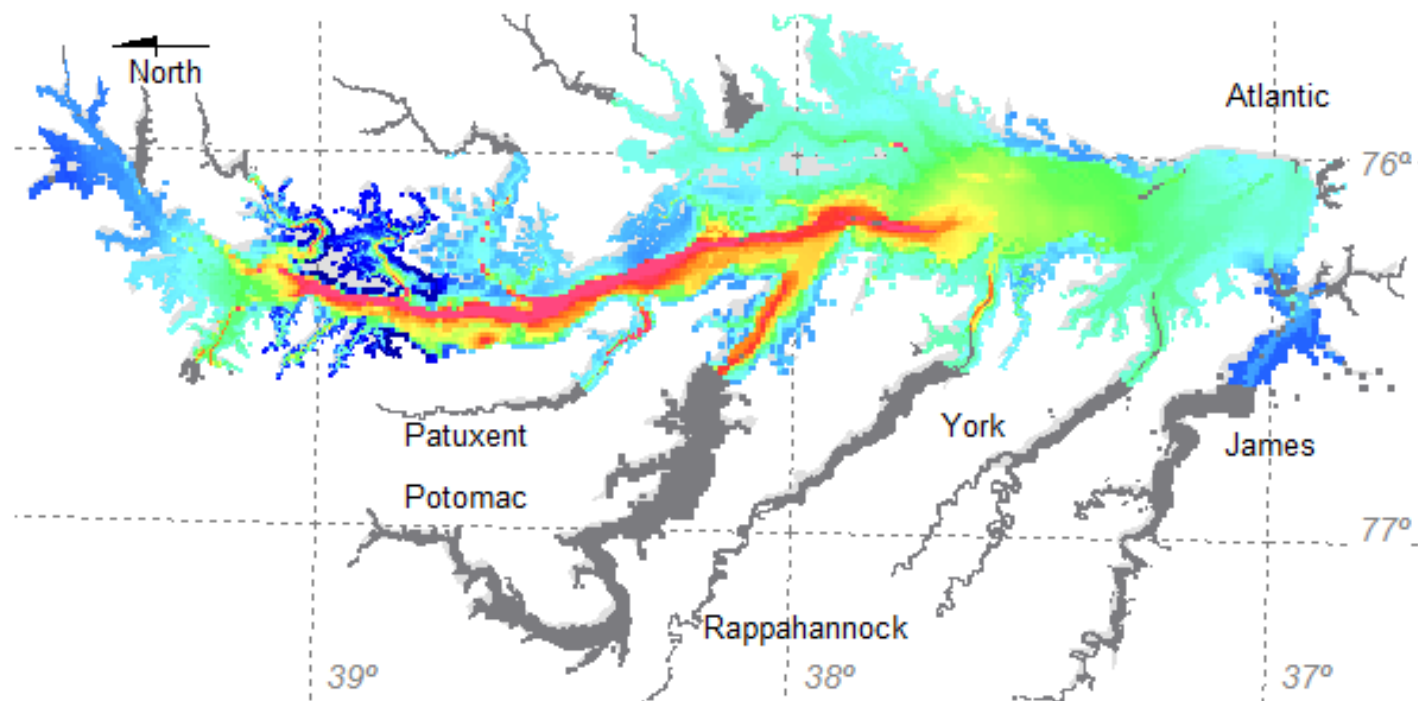
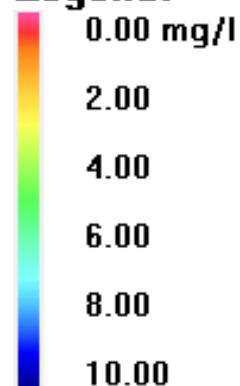
Planview Plot of Minimum Conditions

July 2015 Cruise - Jul 6, 2015-Jul 8, 2015

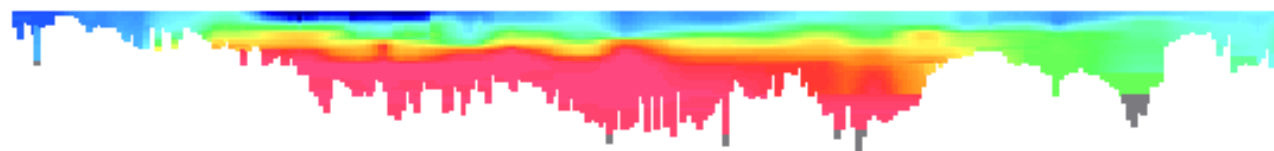
Plan View

Susquehanna

Legend:



Center Transect

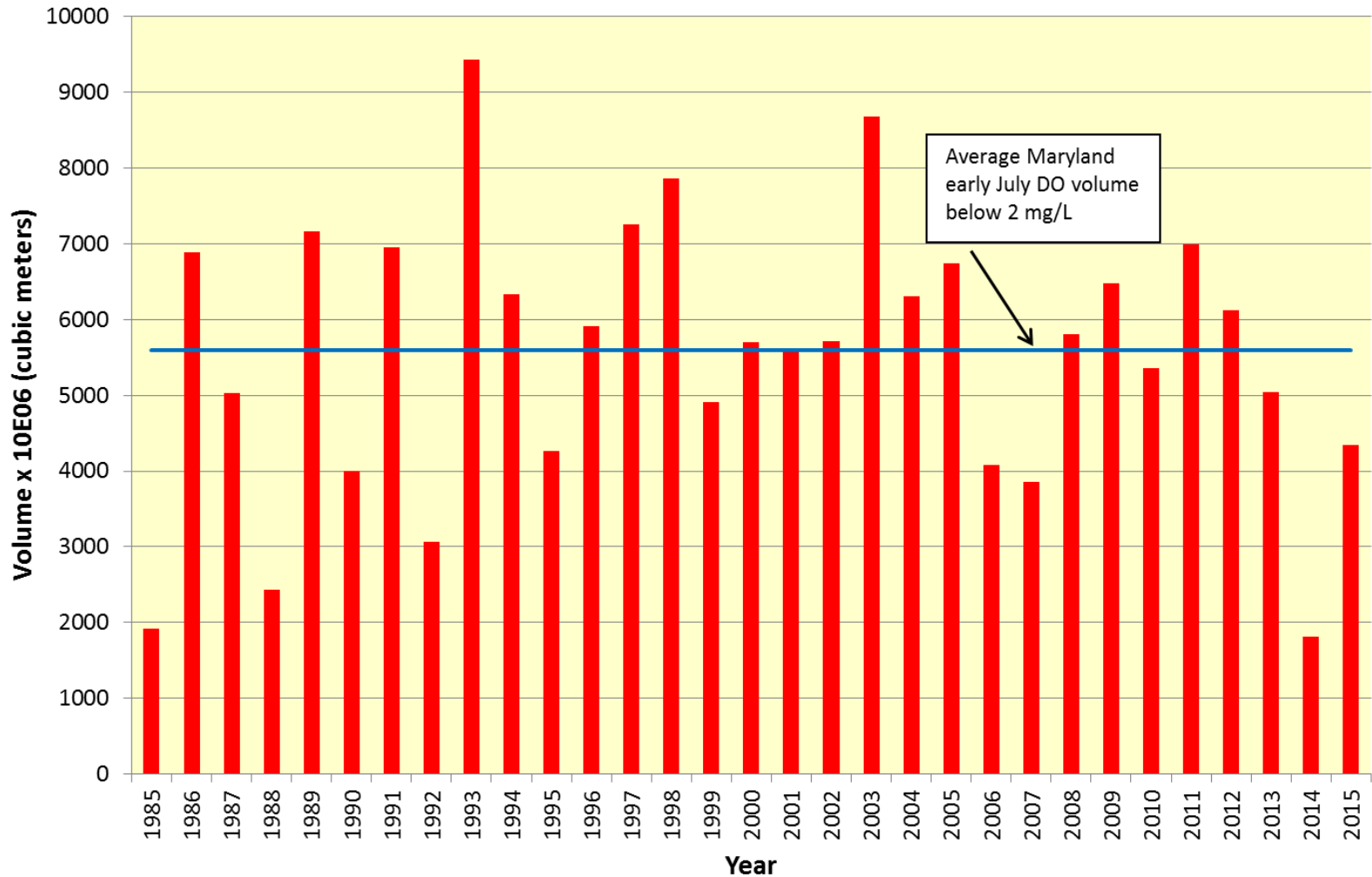


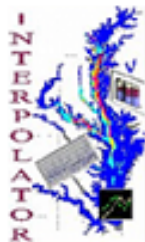
50m

VOL3D464

Comparison of Hypoxic-Anoxic volumes, early July, 1985 - 2015

First July 2015 cruise dissolved oxygen volume
below 2 mg/L for the Maryland main Bay

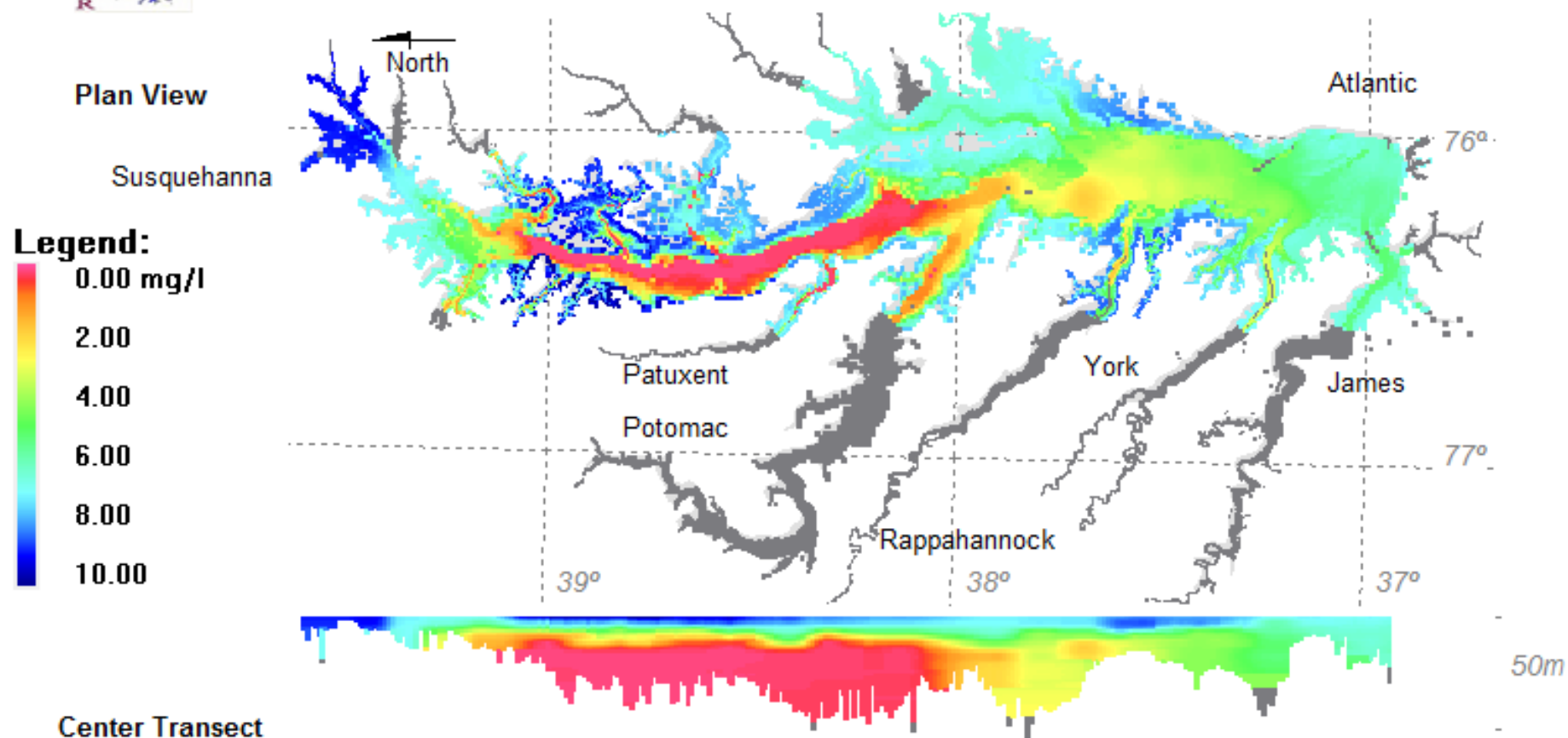




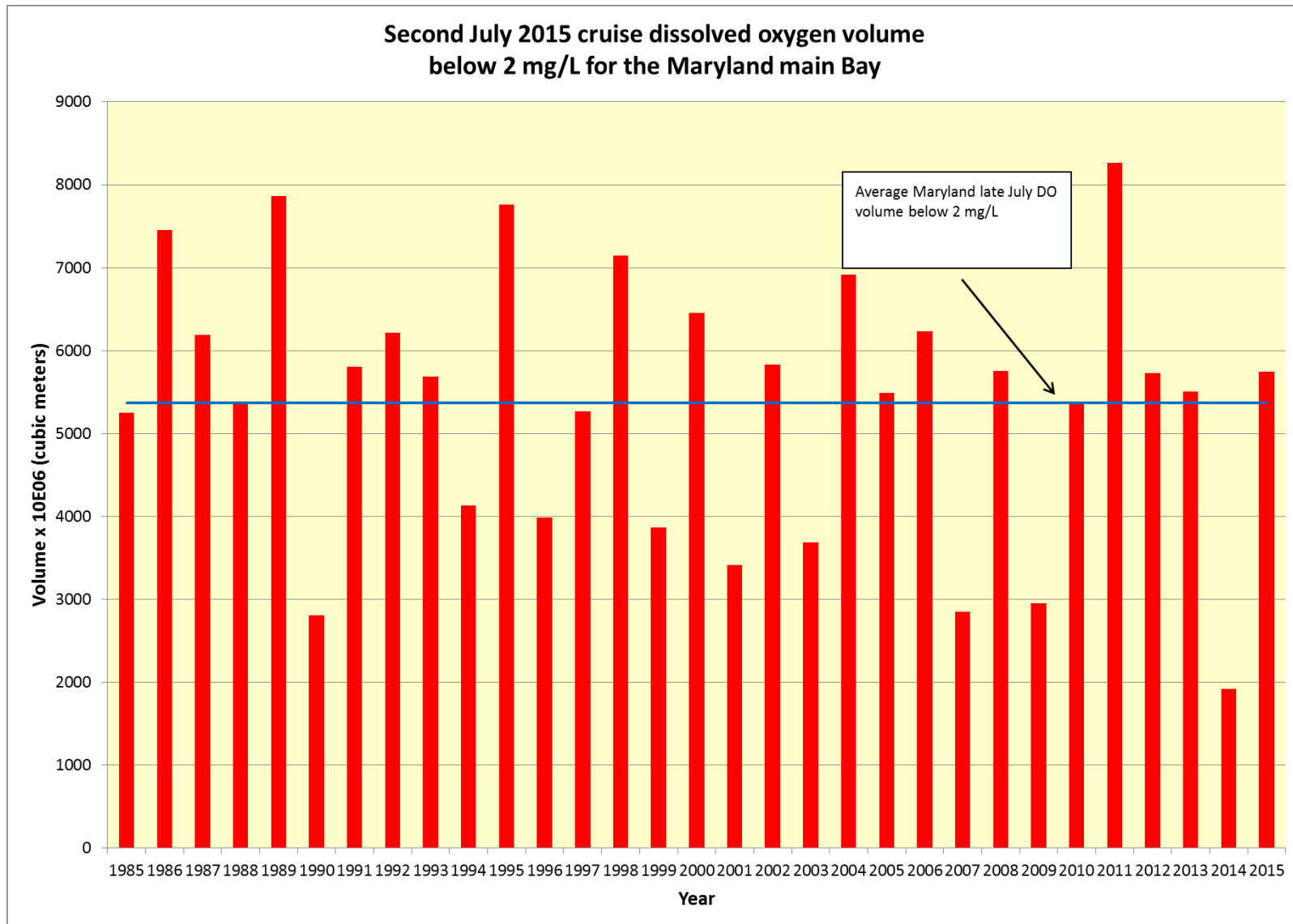
CHESAPEAKE BAY

Planview Plot of Minimum Conditions

July 2015 Cruise - Jul 20, 2015-Jul 23, 2015



Comparison of Hypoxic-Anoxic volumes, late July, 1985 - 2015



**Range and average volume of hypoxic water (<2mg/l)
in Maryland's mainstem Chesapeake Bay (1985-present)**

