

Data Integrity Work Group Meeting

- April 13, 2021

CBP Data Quality Indicators for Lab Analyzed Parameters

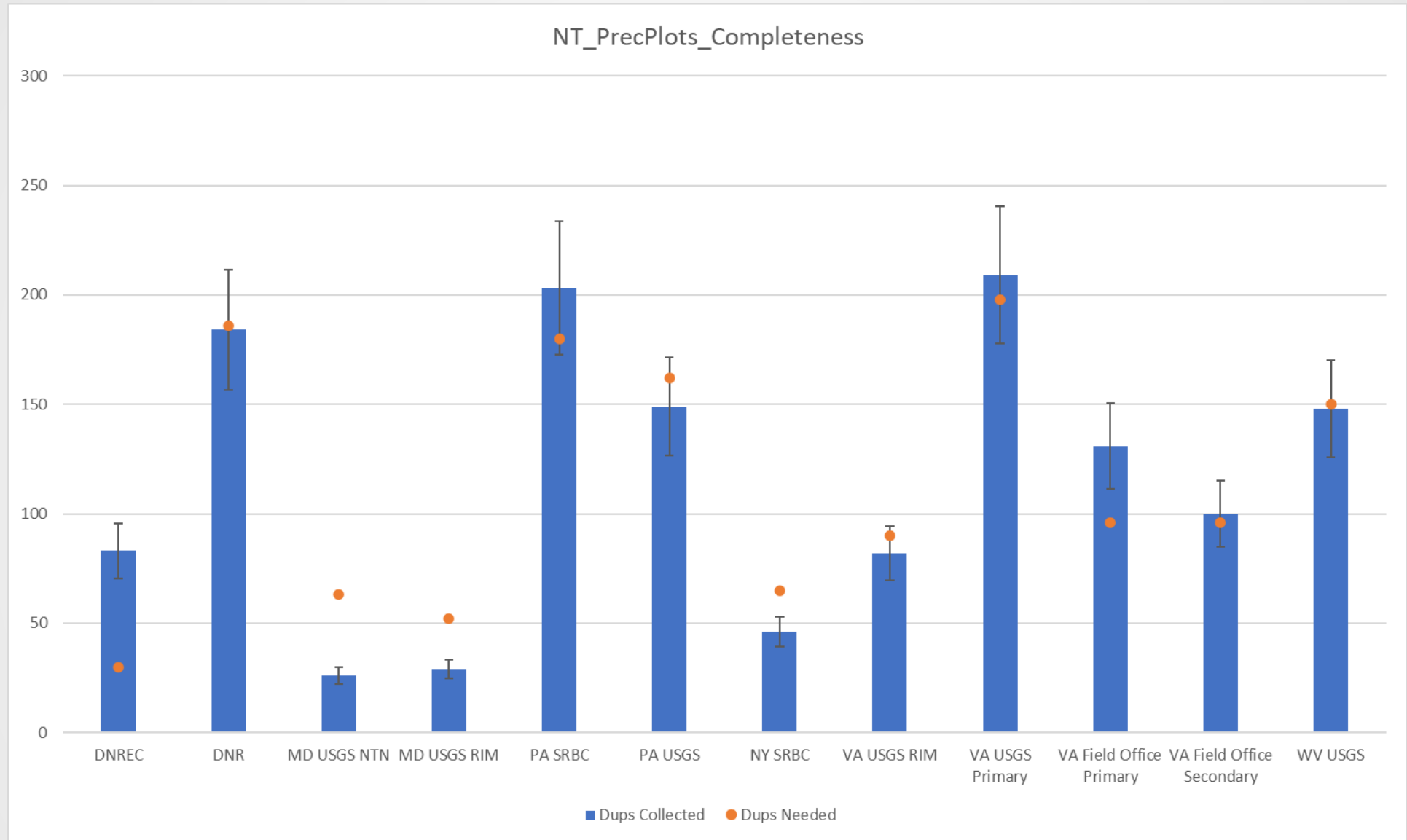
External Quality Assessment:

- Blind Audit Program- *Durga Ghosh (last quarter meeting)*
- Coordinated Split Sample Program- *Mike Mallonee*
- USGS Standard Reference Sample Study- *Breck Sullivan*

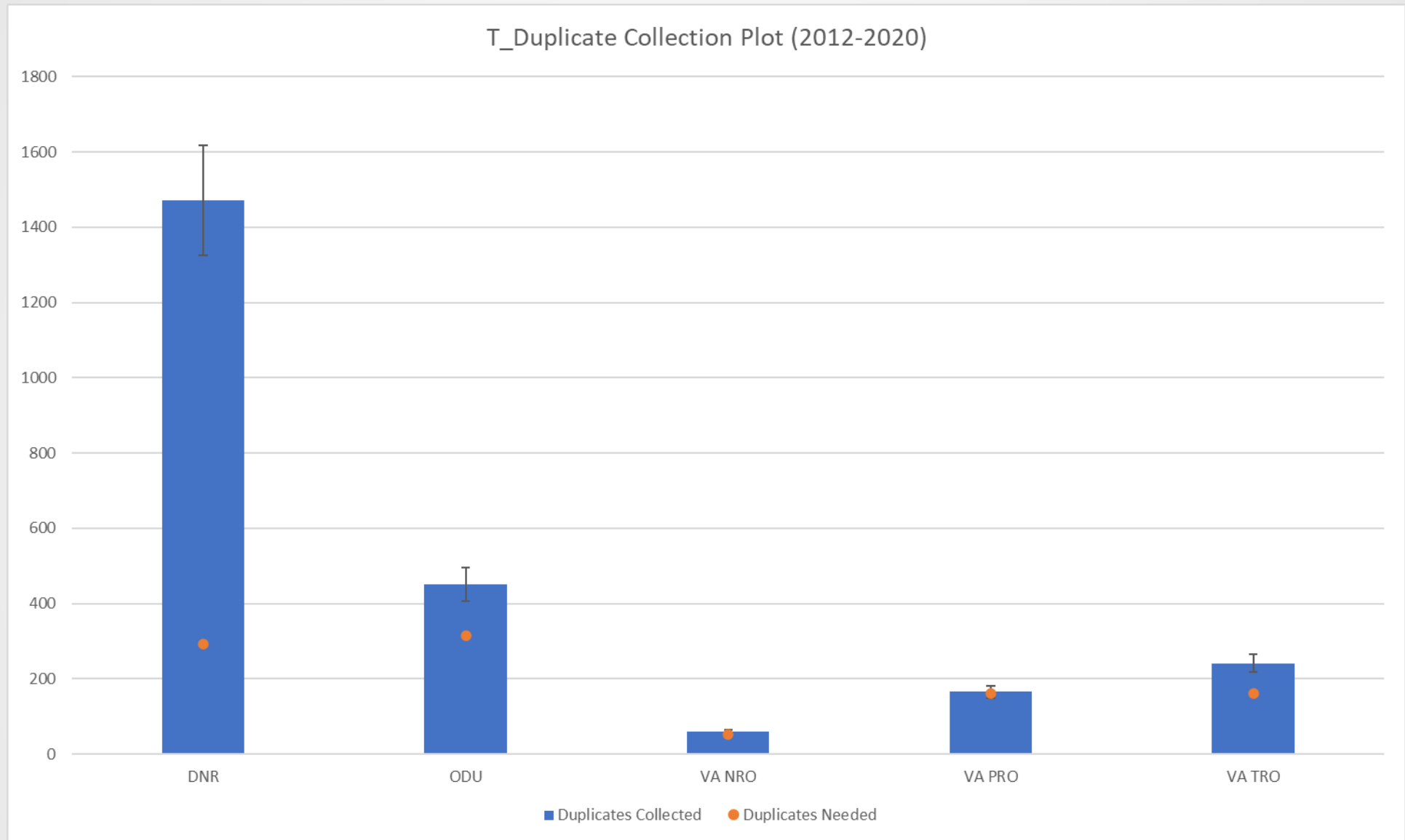
Internal Quality Assessment (*second quarter meeting presentations by DG*):

- Precision from replicates
- Bias from blanks
- Completeness of sampling

Quality System is based on TNI standards- lab accreditation is not required



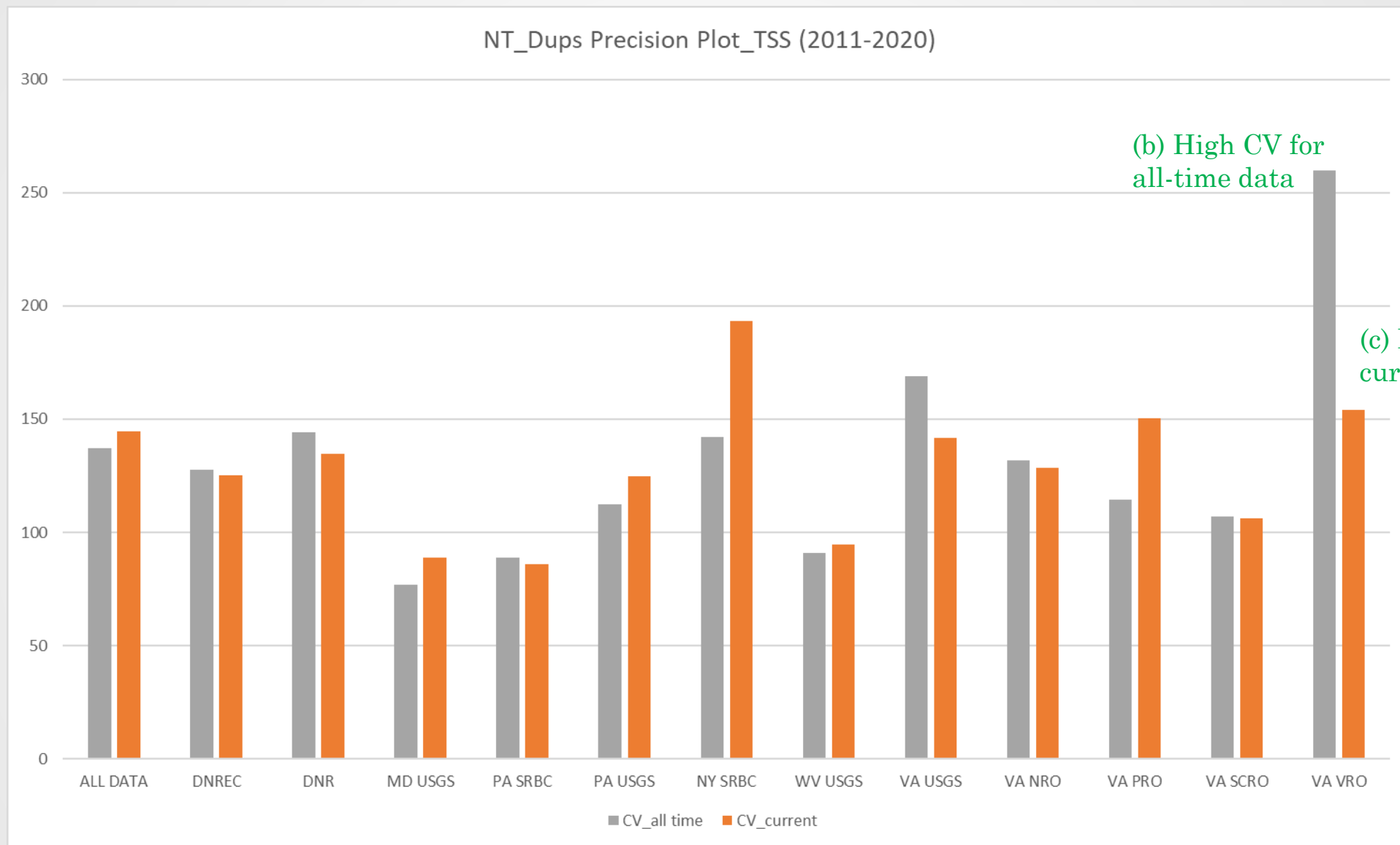
All agencies collecting adequate nontidal sample duplicates, awaiting MD to upload data



All agencies collecting adequate tidal sample duplicates

Look For:

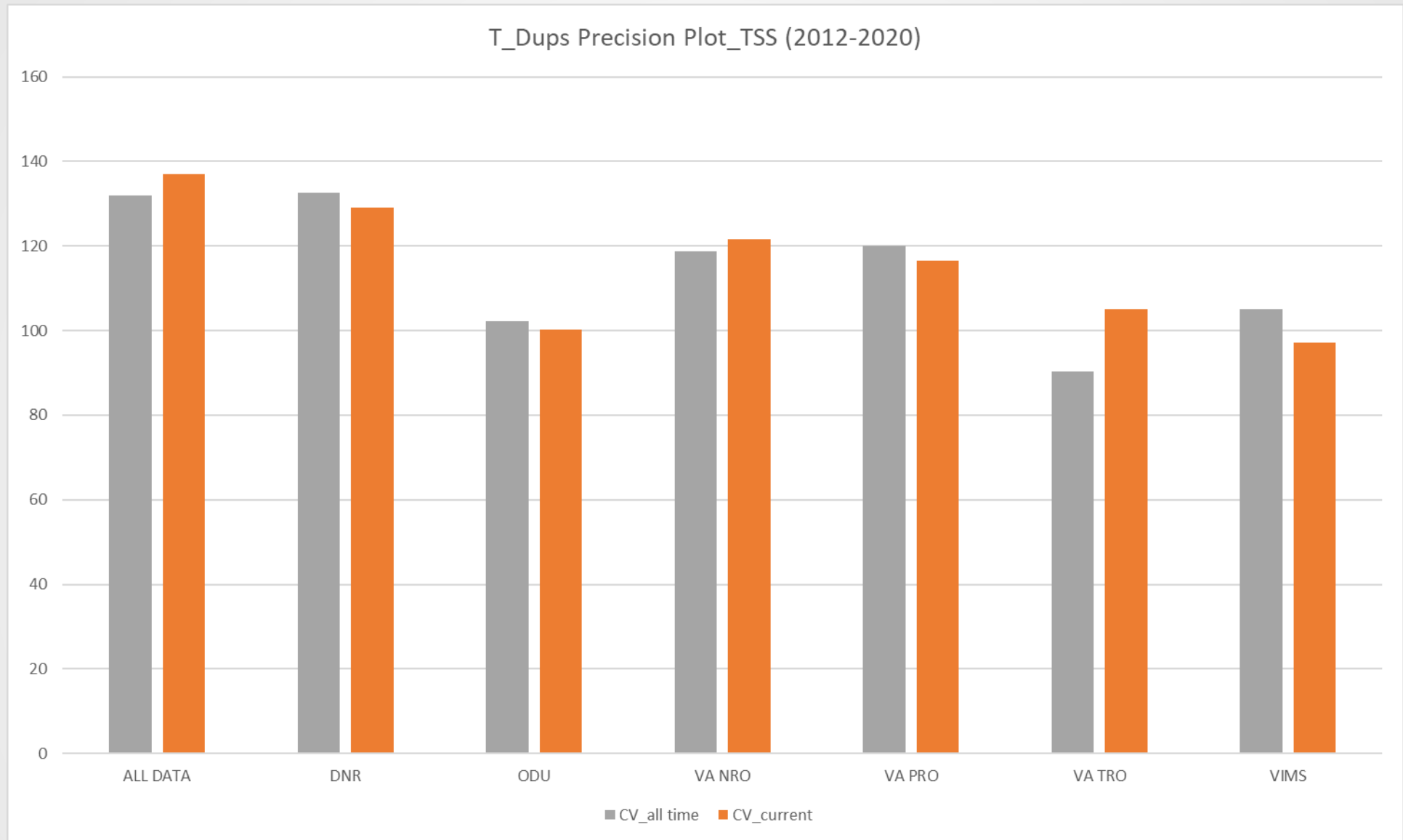
(a) Fairly tight cluster



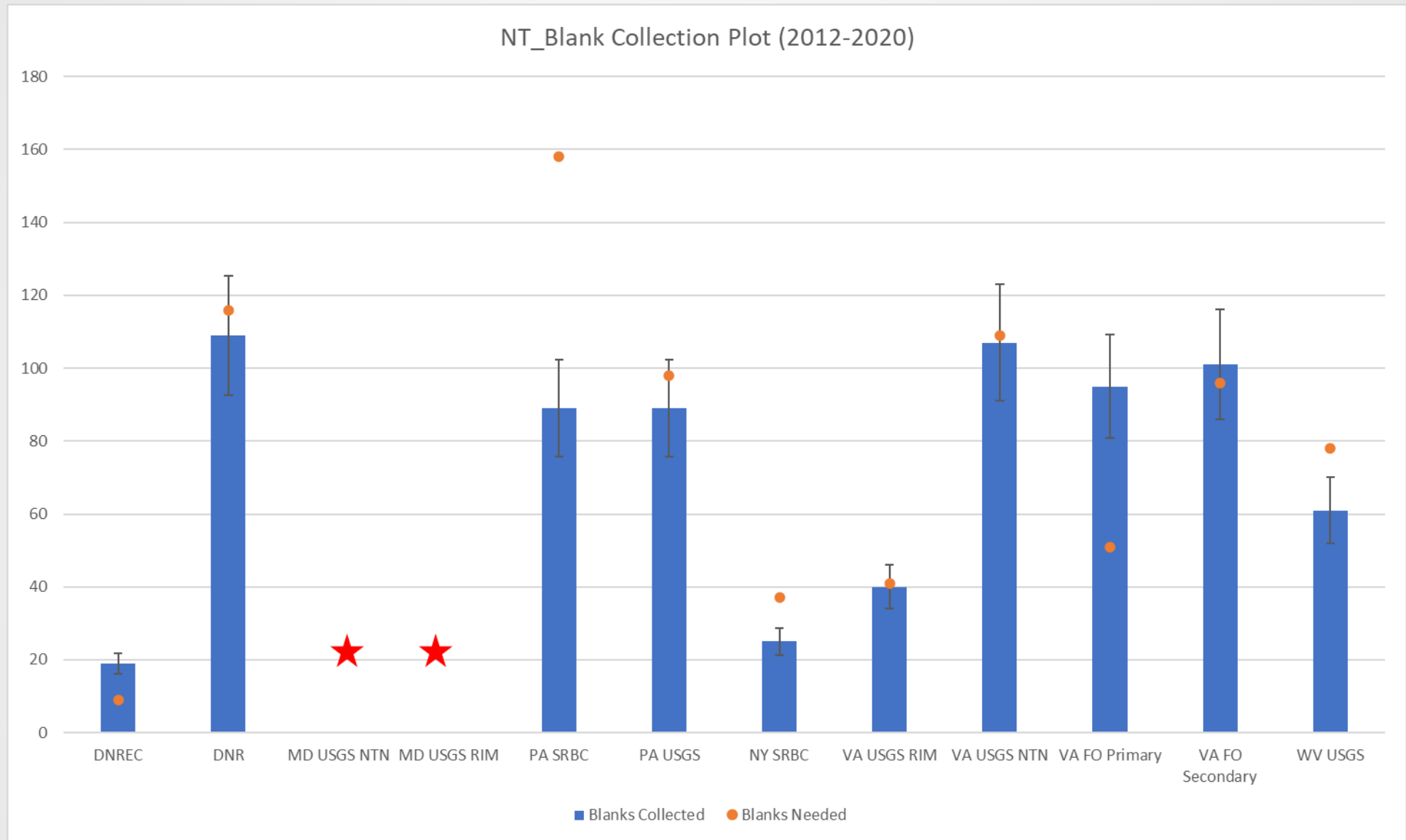
(b) High CV for all-time data

(c) Low CV for current data

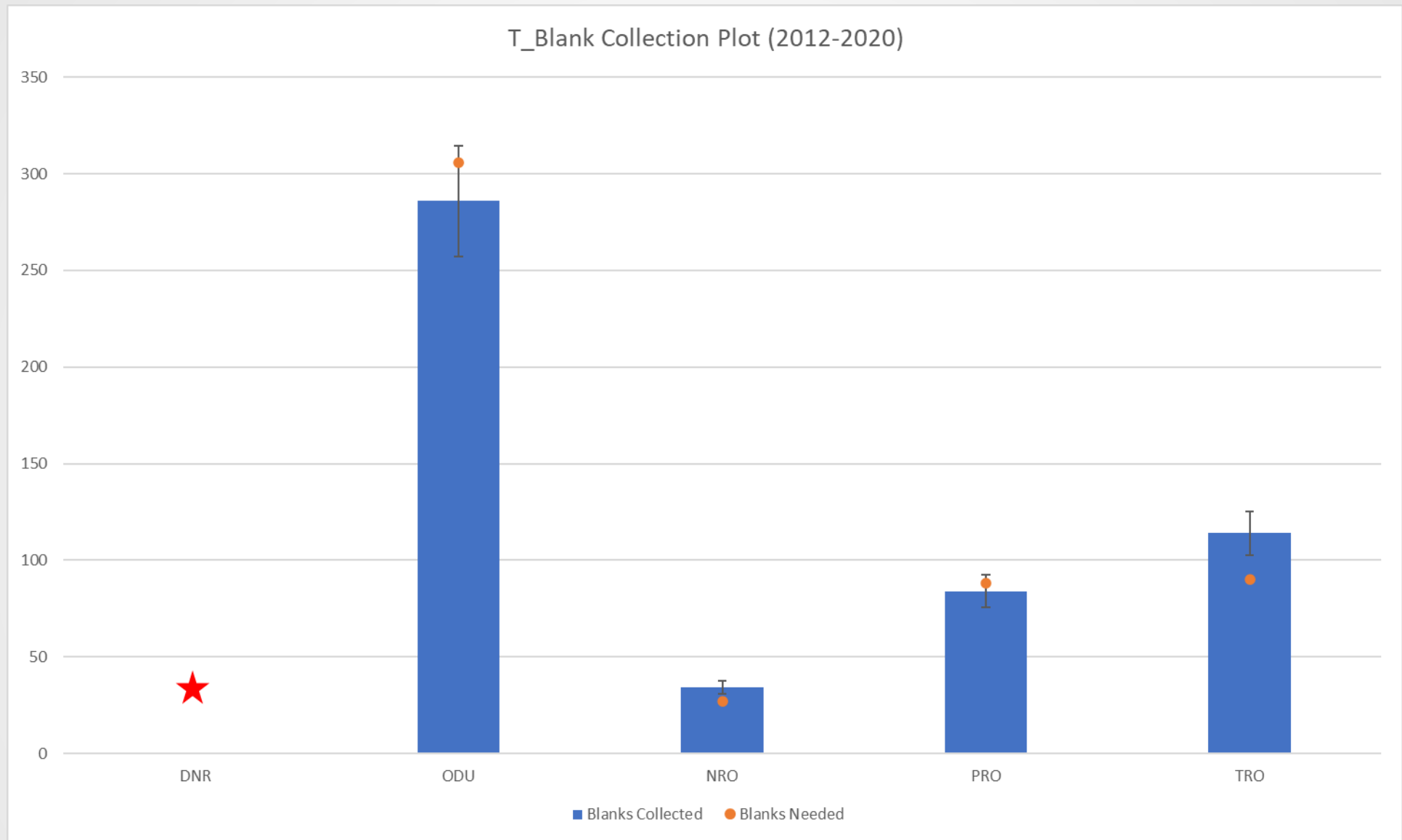
A few RPDs were very high resulting in high Coefficient of Variation, but appear to be isolated incidents



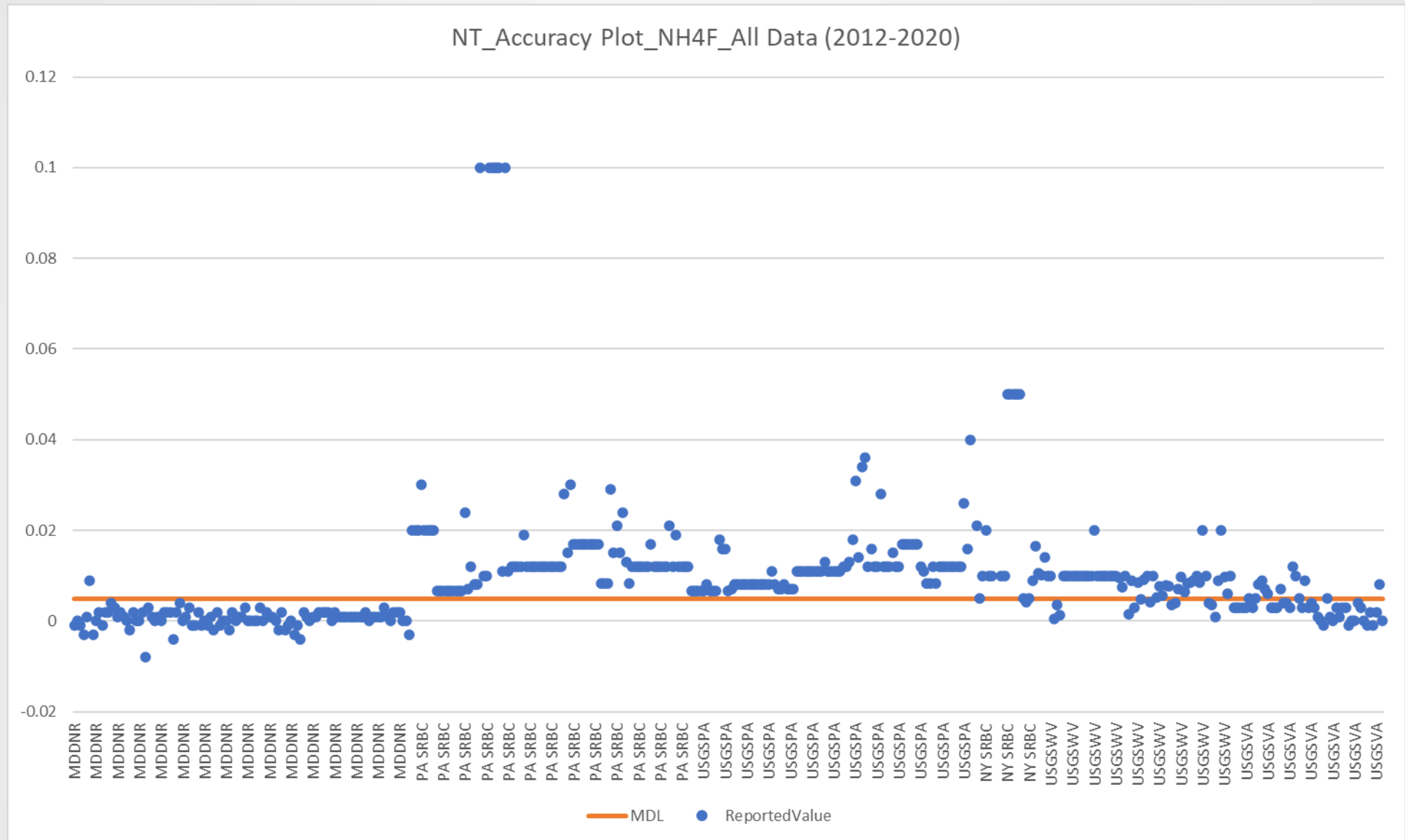
Look for: (a) clustered CV values; (b) CV calculated for the more recent data should be \leq all-time data



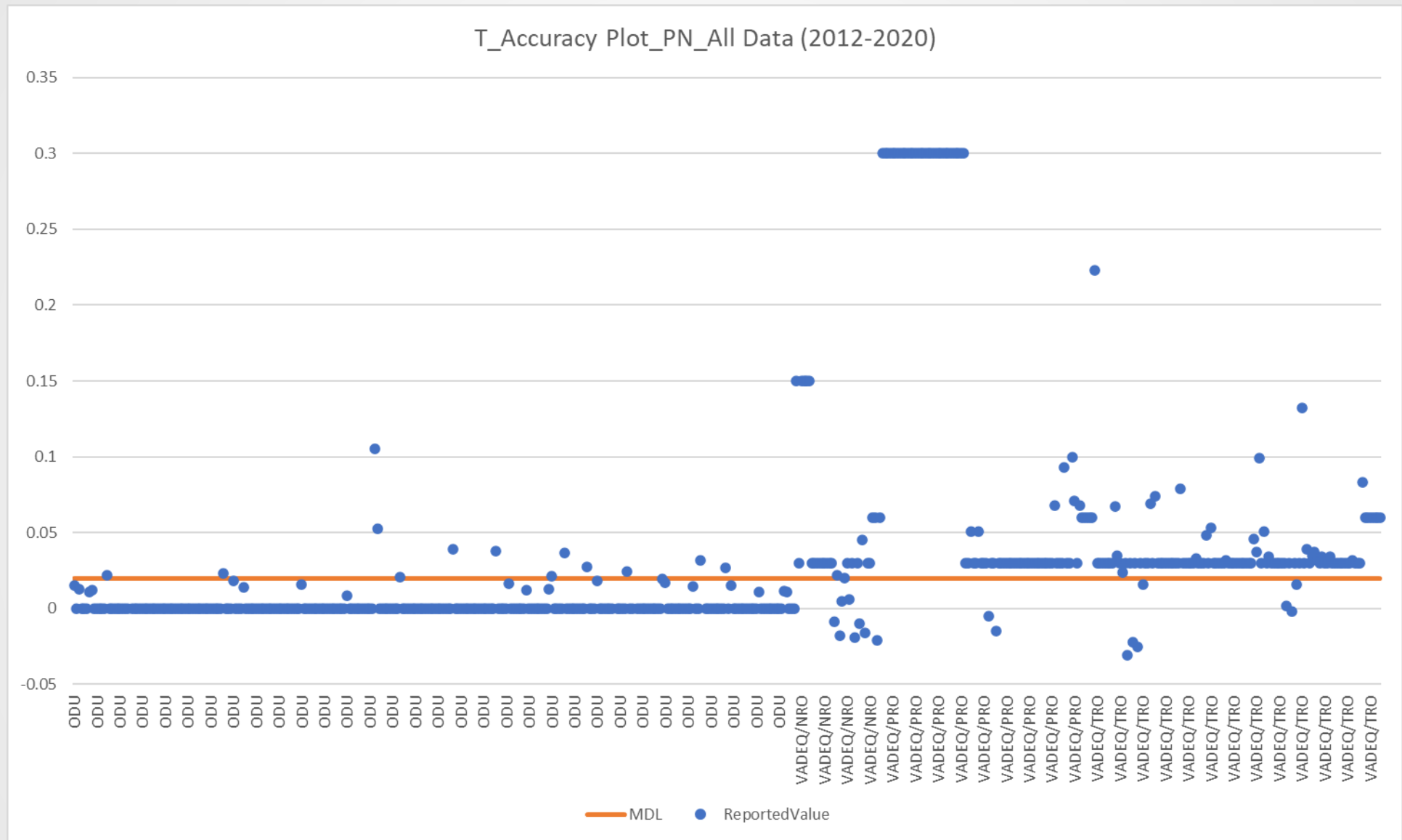
All agencies collecting adequate nontidal sample blanks, awaiting MD to upload data



All agencies collecting adequate nontidal sample blanks, awaiting MD to upload data



A few samples are ≥ 0.05 (10x MDL), but appear to be isolated incidents in 2012 and 2015- also seen for NO₂3 and TDN



A few samples are ≥ 0.2 (10x MDL), but appear to have been restricted to 2013-2015



Bruce-

Enjoy your retirement!

And thank you for your
leadership- forever
indebted!

Thank you all and stay safe!