

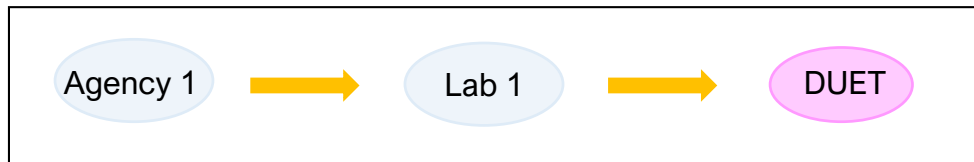
# Laboratory Comparison/Proficiency Testing

**DIWG Meeting  
March 19, 2019**

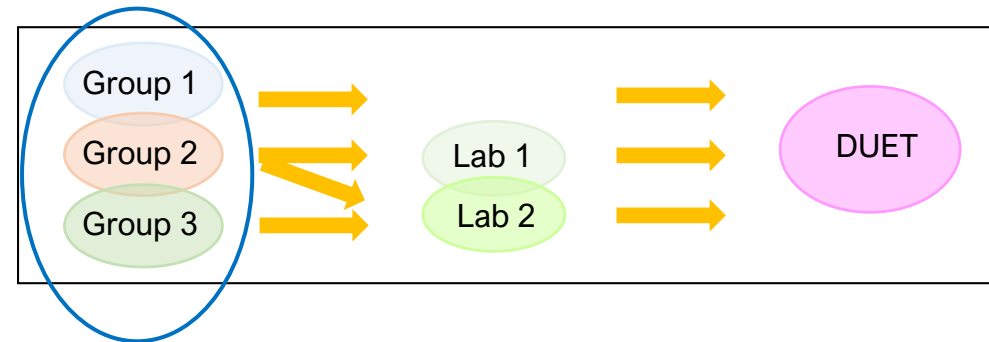
## CBP Requirements and Recommendations for monitoring programs:

- Develop a sampling schedule
- Perform field measurements as per CBP procedures
- Collect, prepare and transport field samples
- Lab receipt, preparation, and chemical analysis of field samples
- Adherence to CBP mandated QA/QC procedures (*dups, blanks, MDLs....*)
- Records management and data uploads
- External Performance Assessments (CSSP, Blind Audits, USGS Reference Samples)

Traditional

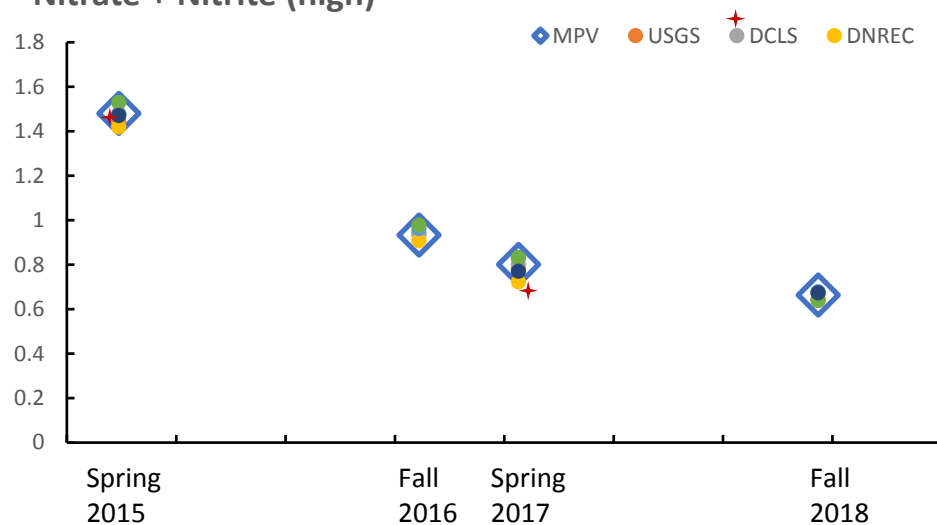


Non-traditional

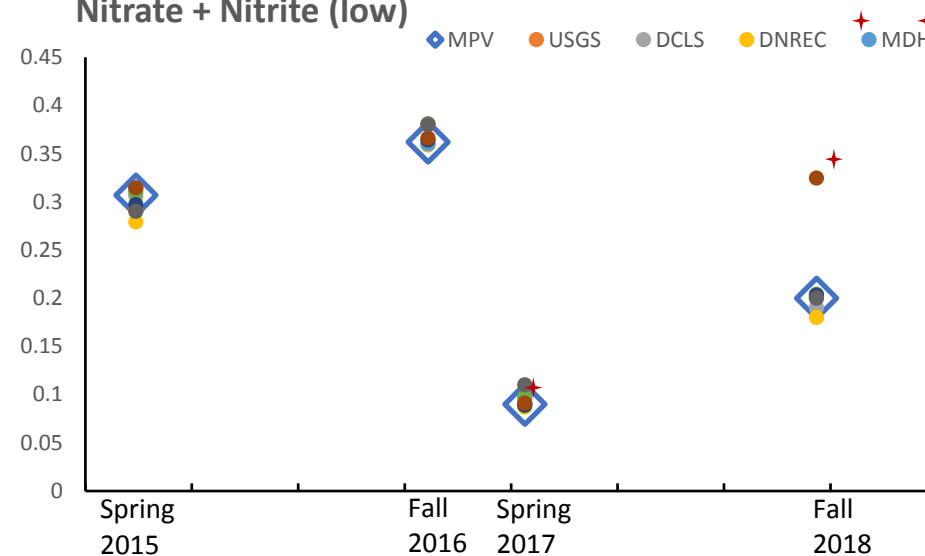


# External Audit 1- USGS Reference Sample Results 2015-2018

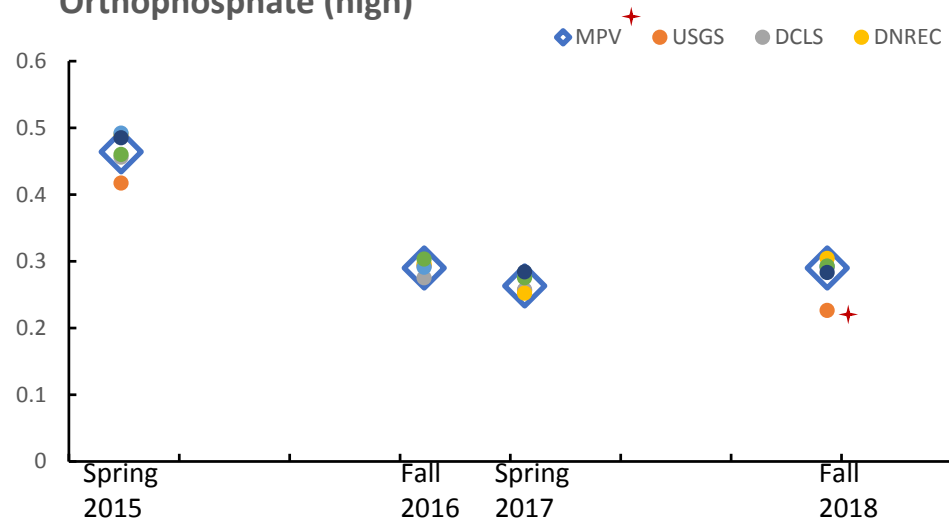
## Nitrate + Nitrite (high)



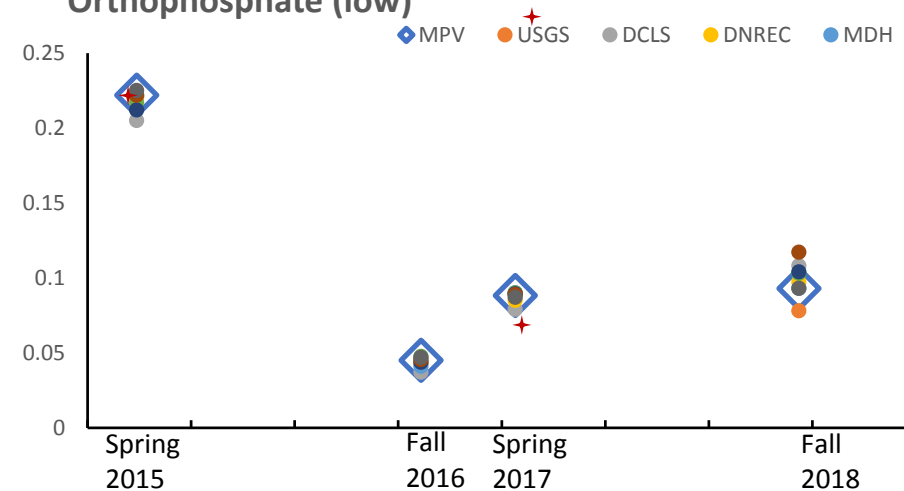
## Nitrate + Nitrite (low)



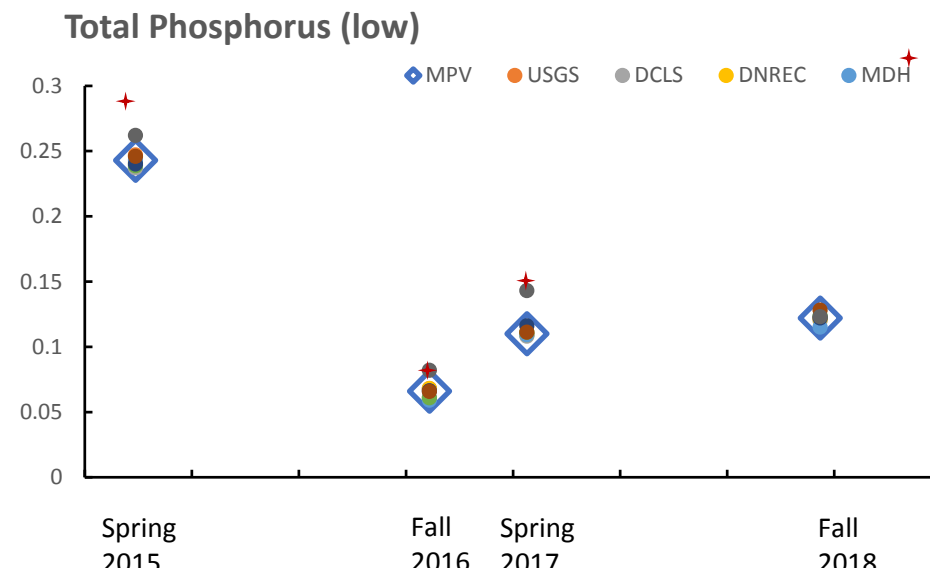
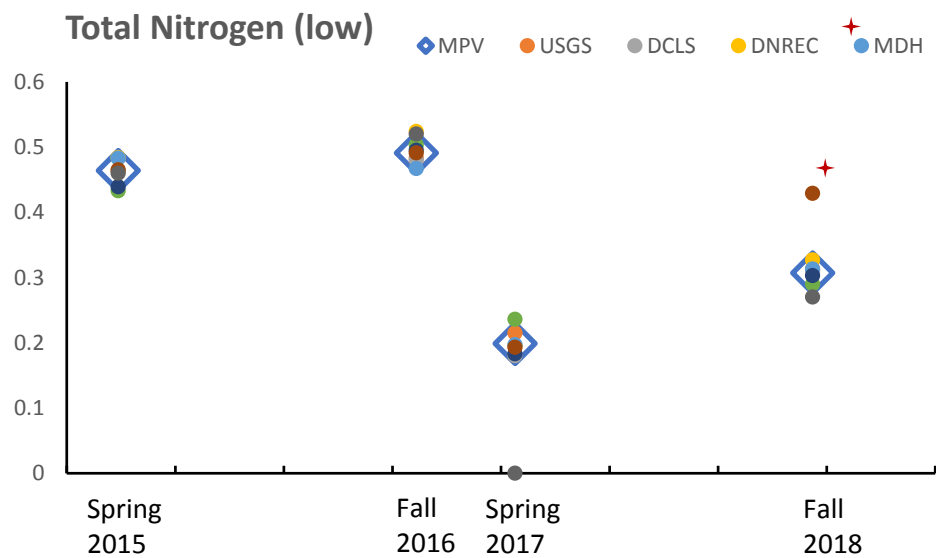
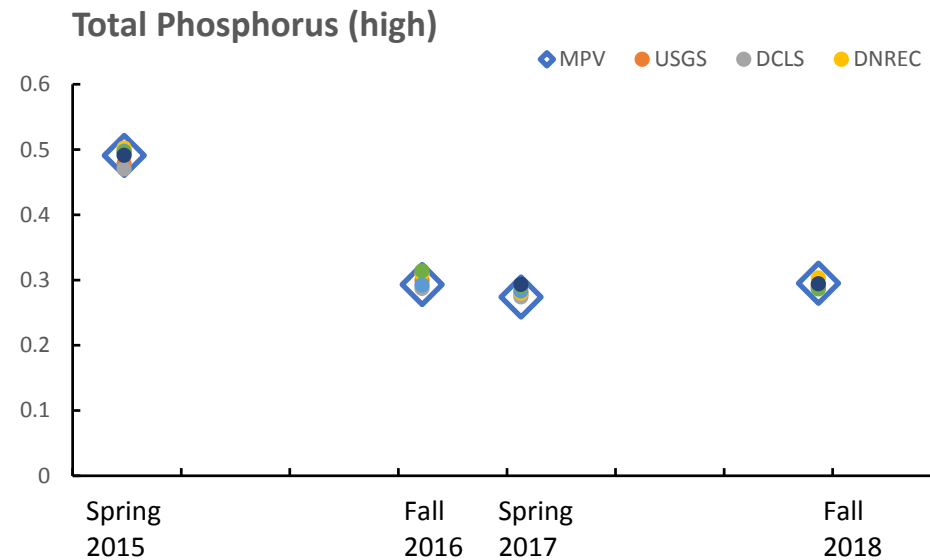
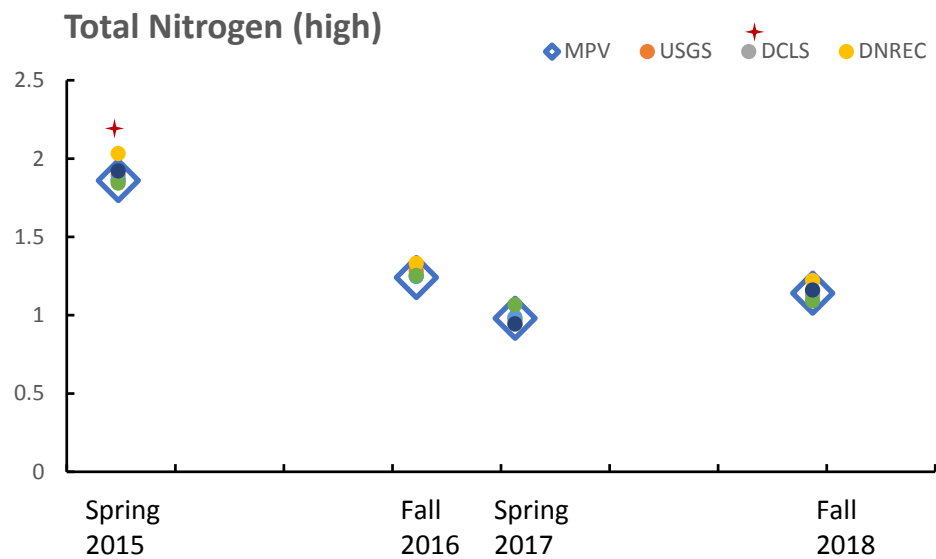
## Orthophosphate (high)



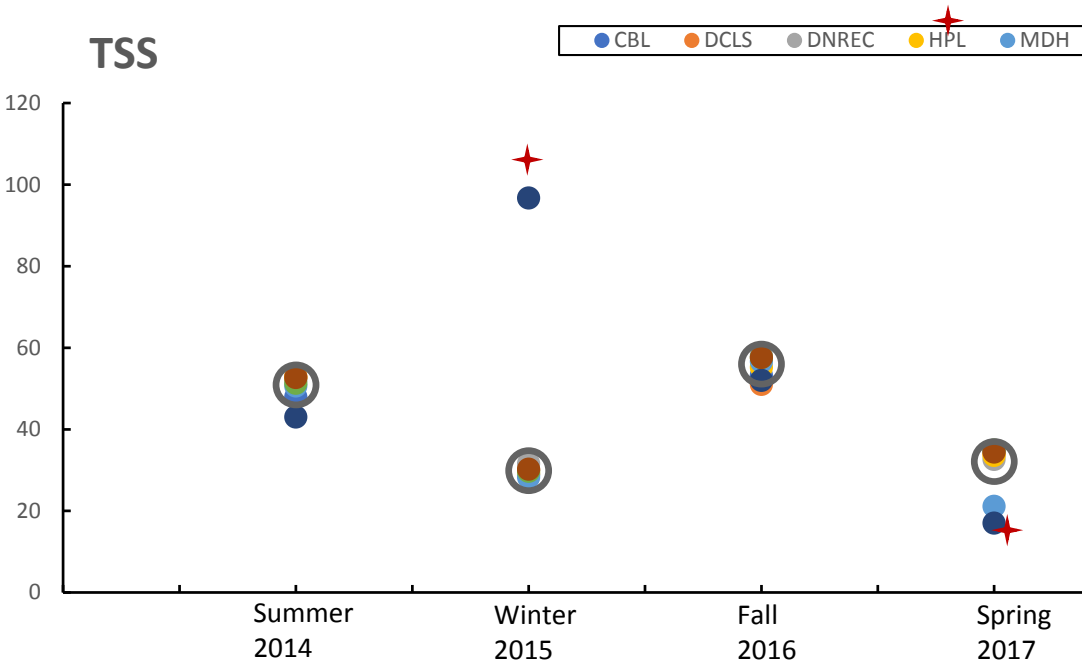
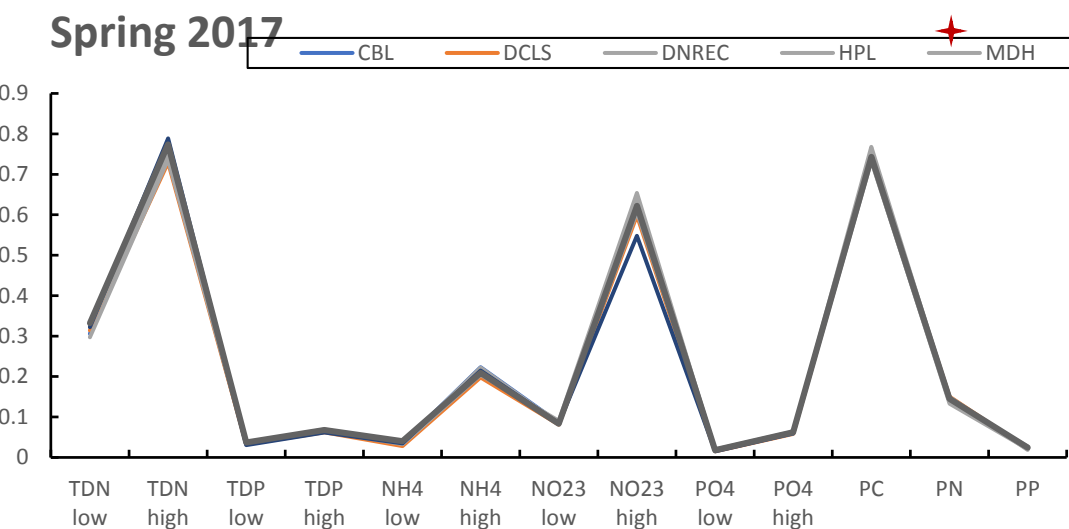
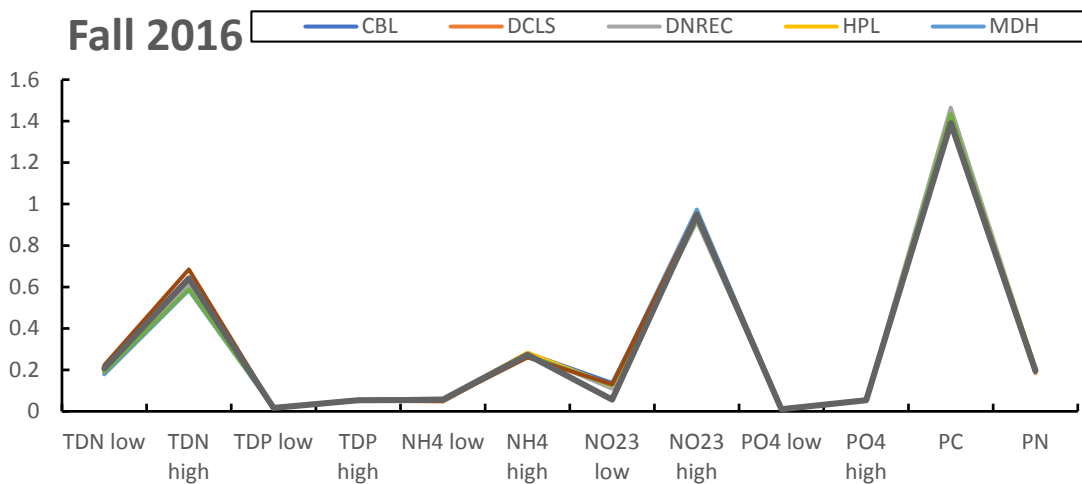
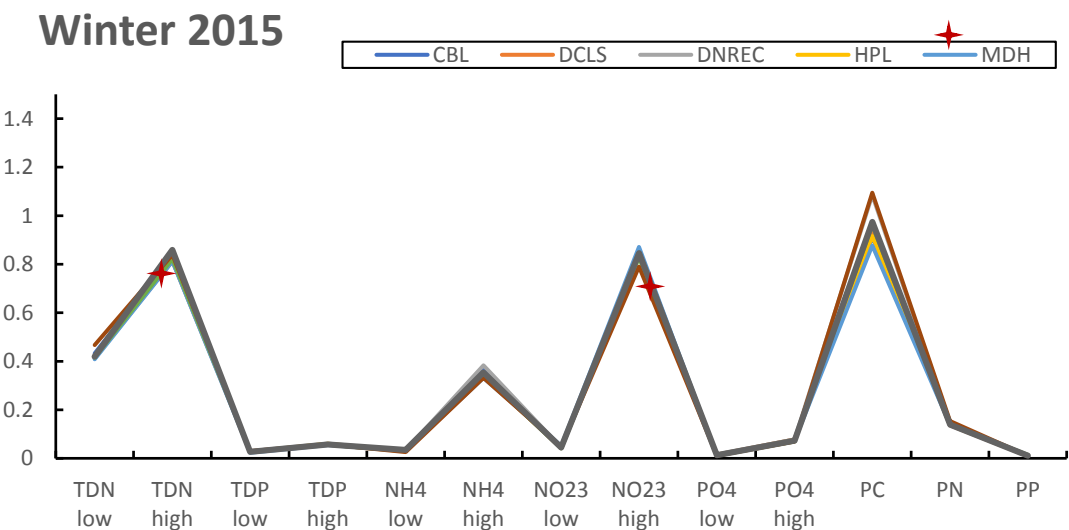
## Orthophosphate (low)



# External Audit 1- USGS Reference Sample Results 2015-2018



# External Audit 2- Blind Audit Results



## **External Audit 3- CSSP Results (Mike's presentation)**

### **Discussion:**

Do we continue with all three external audits for performance testing?

Can we go with any two?