

# CBP End of the Year Report: NT Indicators

Katie Foreman

NTWG conference call

December 12, 2012

# 5 indicators featured

- River Flow to the Bay (1937-2011)
- Nitrogen Flow to the Bay (1990-2011)
- Phosphorus Flow to the Bay (1990-2011)
- Sediment Flow to the Bay (1990-2011)
- Stream Health Indicator (2000-2010)

# New methodologies

- Chessie B-IBI (as revised in 2011)
- Model – version 5.3.2
- Sediment (using SSC consistently not SSC+TSS)

# Major Stories

- Majority of stream sites are poor or very poor as rated by the Chessie B-IBI (average from 2000-2010)
- 2011 was one of the five wettest years on record due to a very wet spring followed by Hurricane Irene and Tropical Storm Lee that hit the region in the late summer/early fall.
  - 73 BGD (av. 51 BGD)
- Well above average levels of all nutrients and sediment with record high levels of TP and SS (since 1990).
  - 455 million pounds of nitrogen (av. 339 million )
  - 48 million pounds of phosphorus (av. 19 million)
  - 26 million tons of sediment (av. 5 million ton)

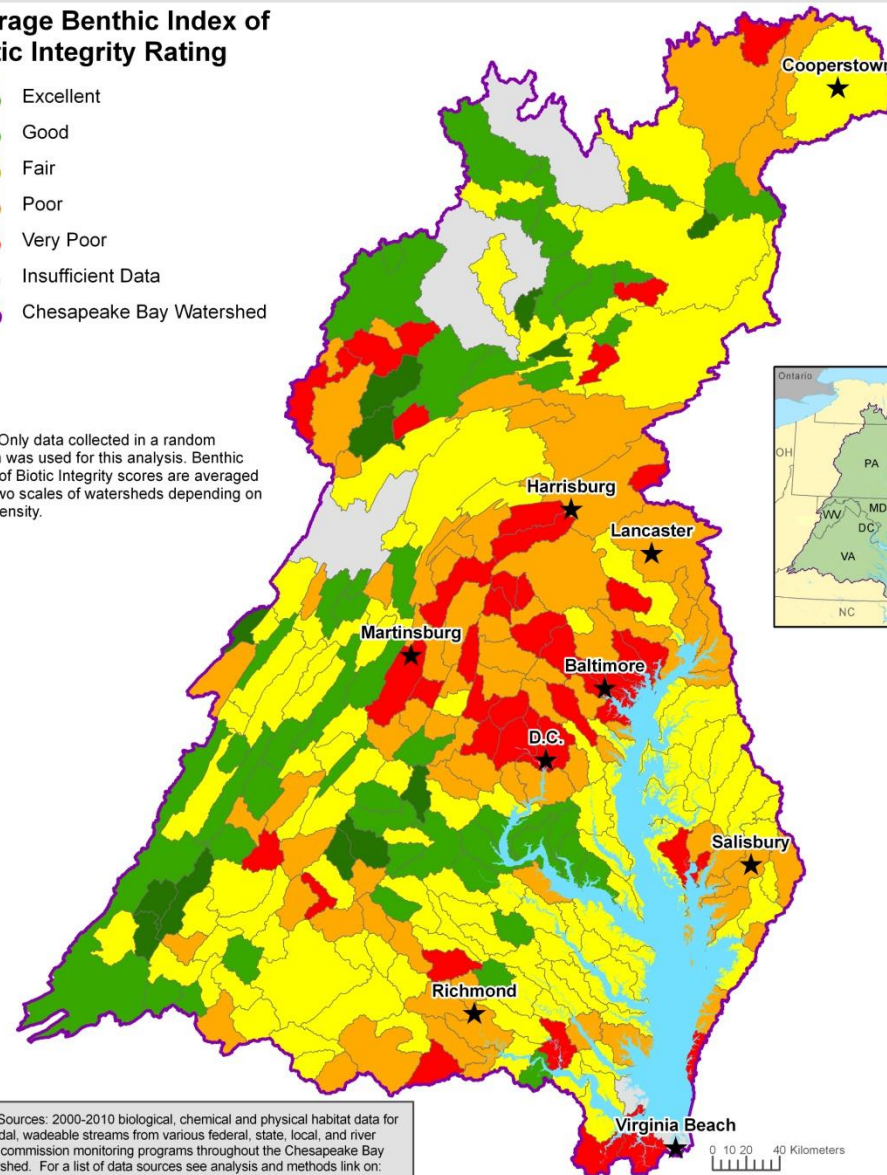
# Average 2000-2010 Stream Health in Chesapeake Bay Sub-watersheds



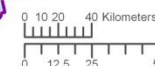
## Average Benthic Index of Biotic Integrity Rating



Note: Only data collected in a random design was used for this analysis. Benthic Index of Biotic Integrity scores are averaged over two scales of watersheds depending on data density.

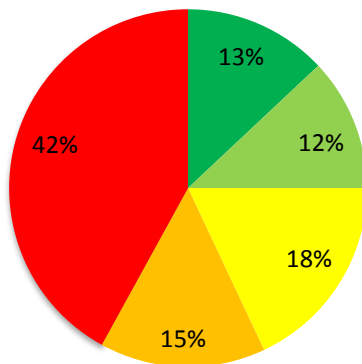


Data Sources: 2000-2010 biological, chemical and physical habitat data for non-tidal, Wadeable streams from various federal, state, local, and river basin commission monitoring programs throughout the Chesapeake Bay Watershed. For a list of data sources see analysis and methods link on: [http://www.chesapeakebay.net/status\\_streamhealth.aspx](http://www.chesapeakebay.net/status_streamhealth.aspx)

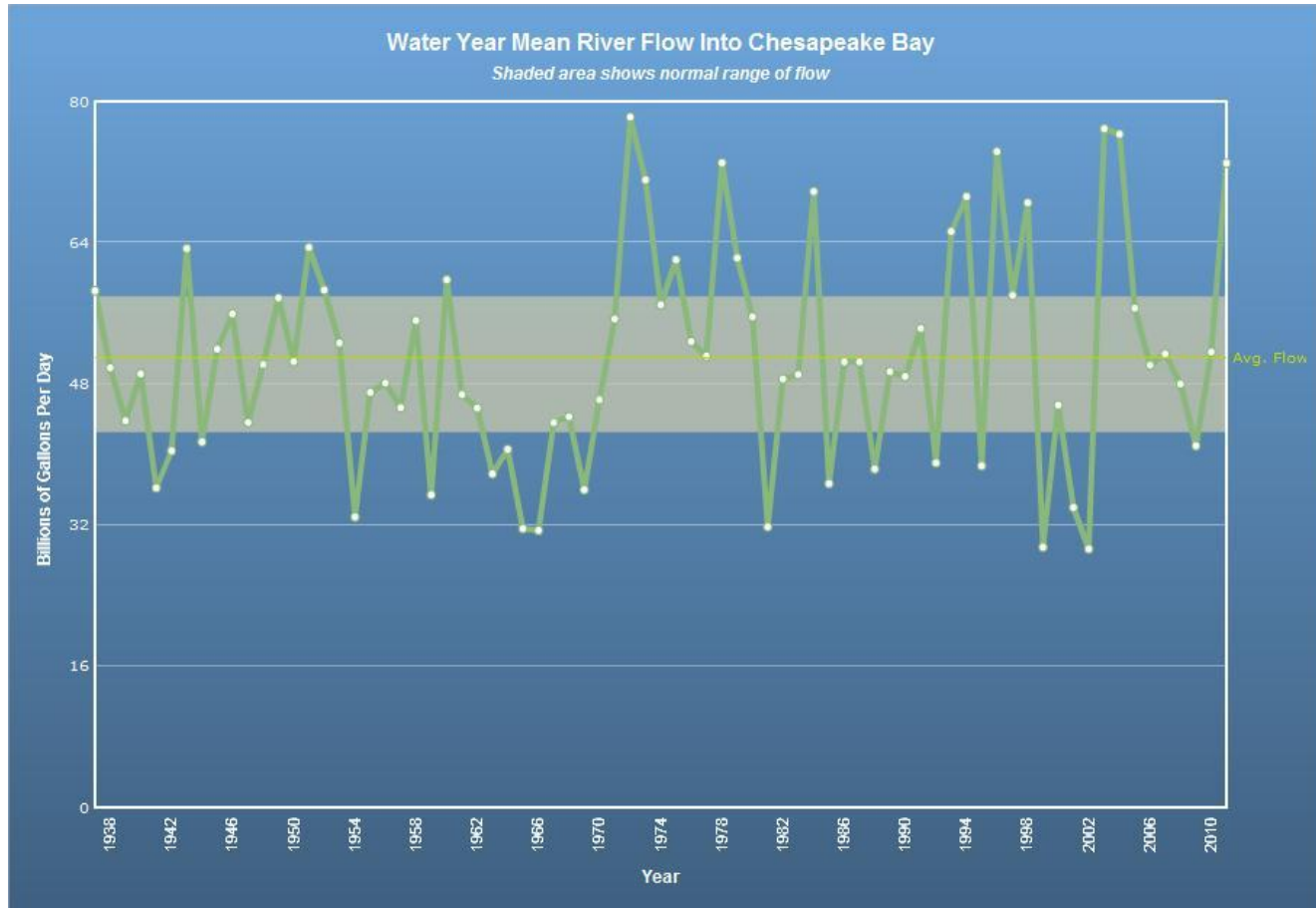


UTM Zone 18N, NAD 83

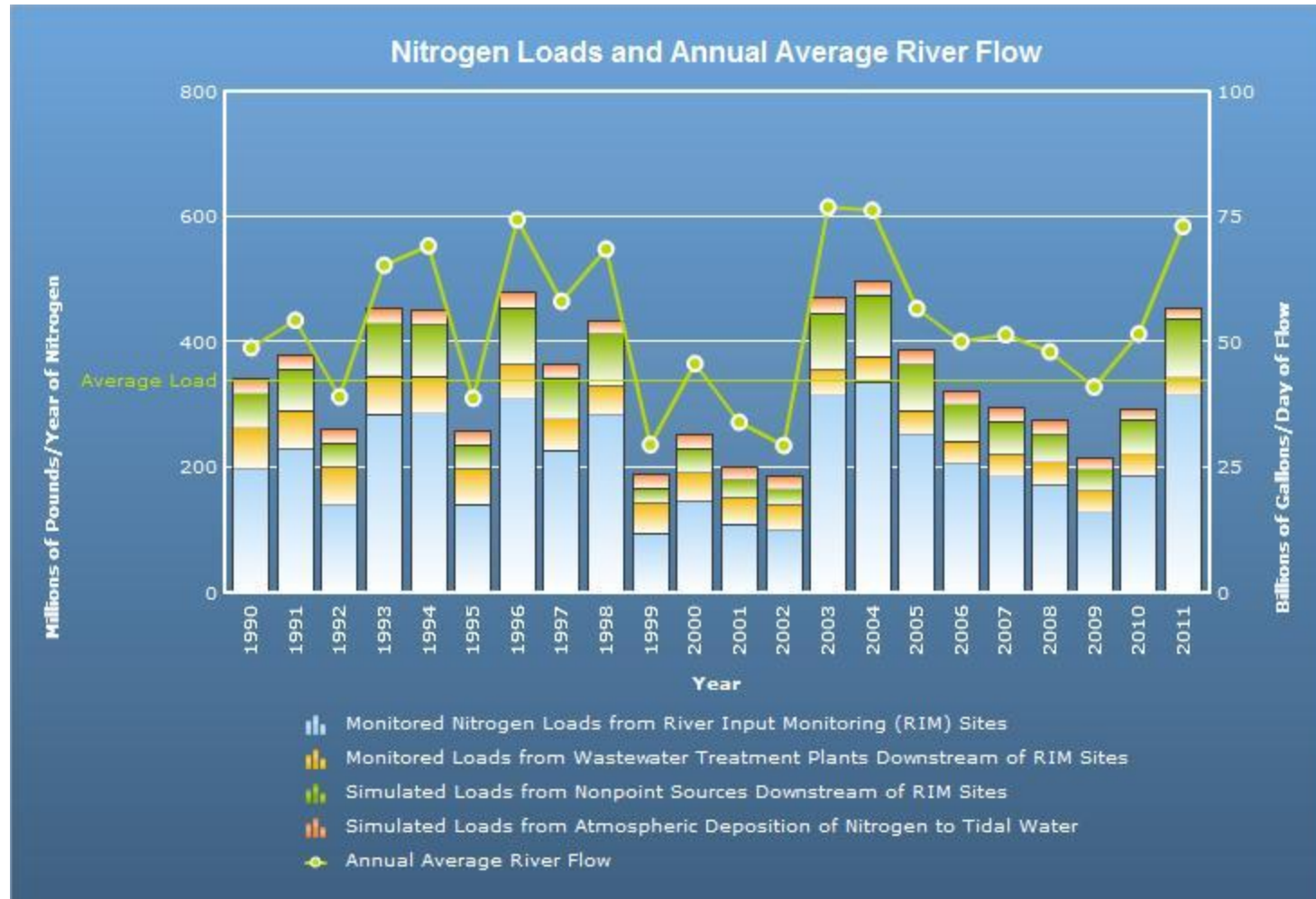
■ Excellent  
■ Good  
■ Fair  
■ Poor  
■ Very Poor



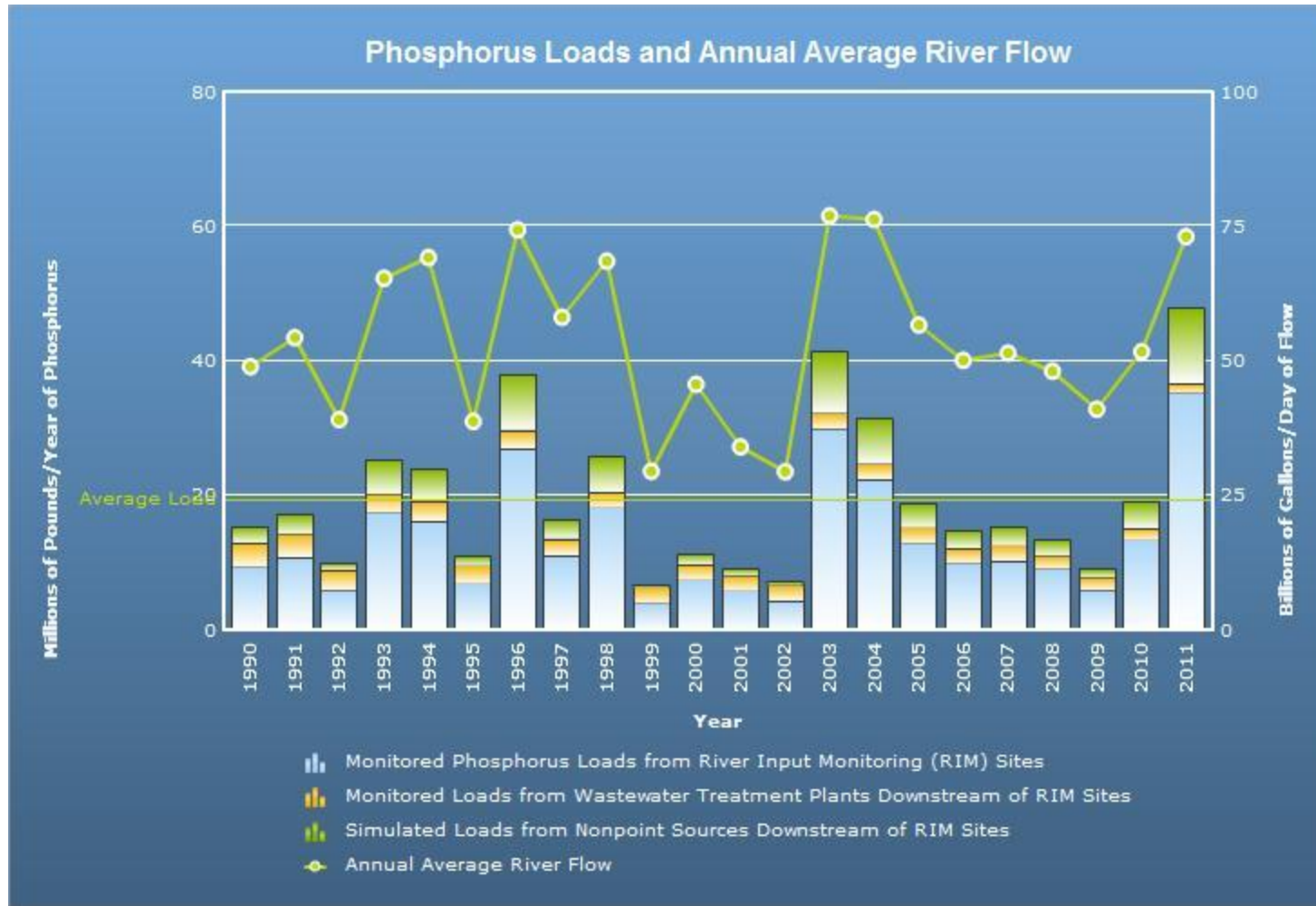
# River Flow to the Bay



# Nitrogen Load to the Bay



# Phosphorus Load to the Bay





# Sediment Load to the Bay

