



# Continuous Monitoring Dissolved Oxygen Criteria Assessment

Mark Trice

Maryland Department of Natural Resources

Tidewater Ecosystem Assessment

[mtrice@dnr.state.md.us](mailto:mtrice@dnr.state.md.us)

Condensed version of presentation shown  
To a June 2005 TMAW workshop

# Data Analysis

- 7-day or 30-day moving window conducted on a daily basis
- Examined percent failure within each 7-day or 30-day period. If 10% or more of the data were less than the criteria, it was listed as 'failing'.
- Data not used if an equivalent of 2 or more days missing (192 out of 672 total) for the 7-day. Data not used for 30-day window if greater than 25% was missing.

-Up to 96 readings/day  
-Collected every 15 minutes  
-1.3 MILLION Data Points Used

June 1

1 2 3 4 5 6 7 8 9 10

June 2

1 2 3 4 5 6 7 8 9 10

June 3

1 2 3 4 5 6 7 8 9 10

# 2003 7-day Dissolved Oxygen Criteria

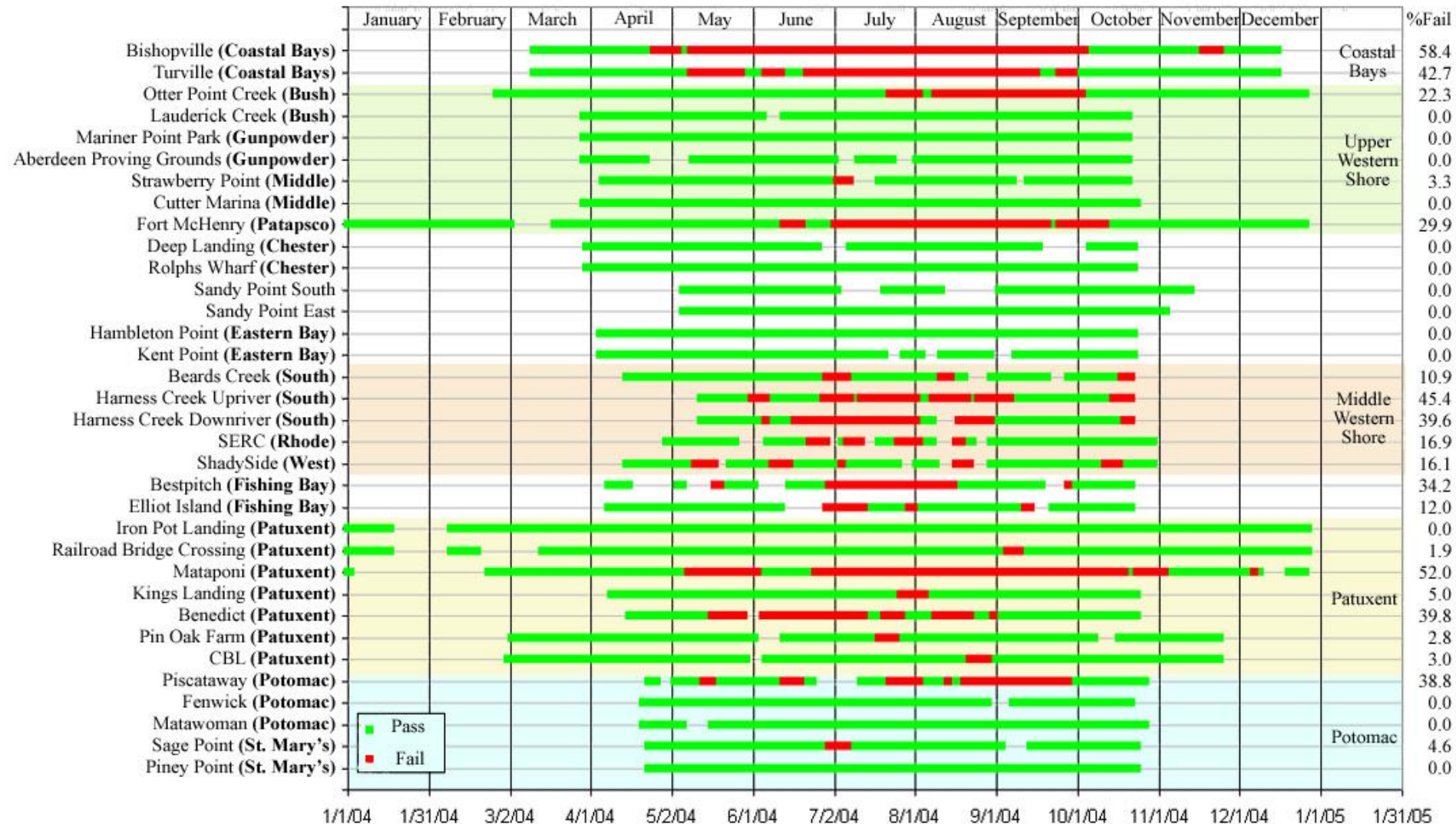
Failing determined by at least 10% of data within a 7-day window exceeding the 4 mg/l threshold





# 2004 7-day Dissolved Oxygen Criteria

Failing determined by at least 10% of data within a 7-day window exceeding the 4 mg/l threshold

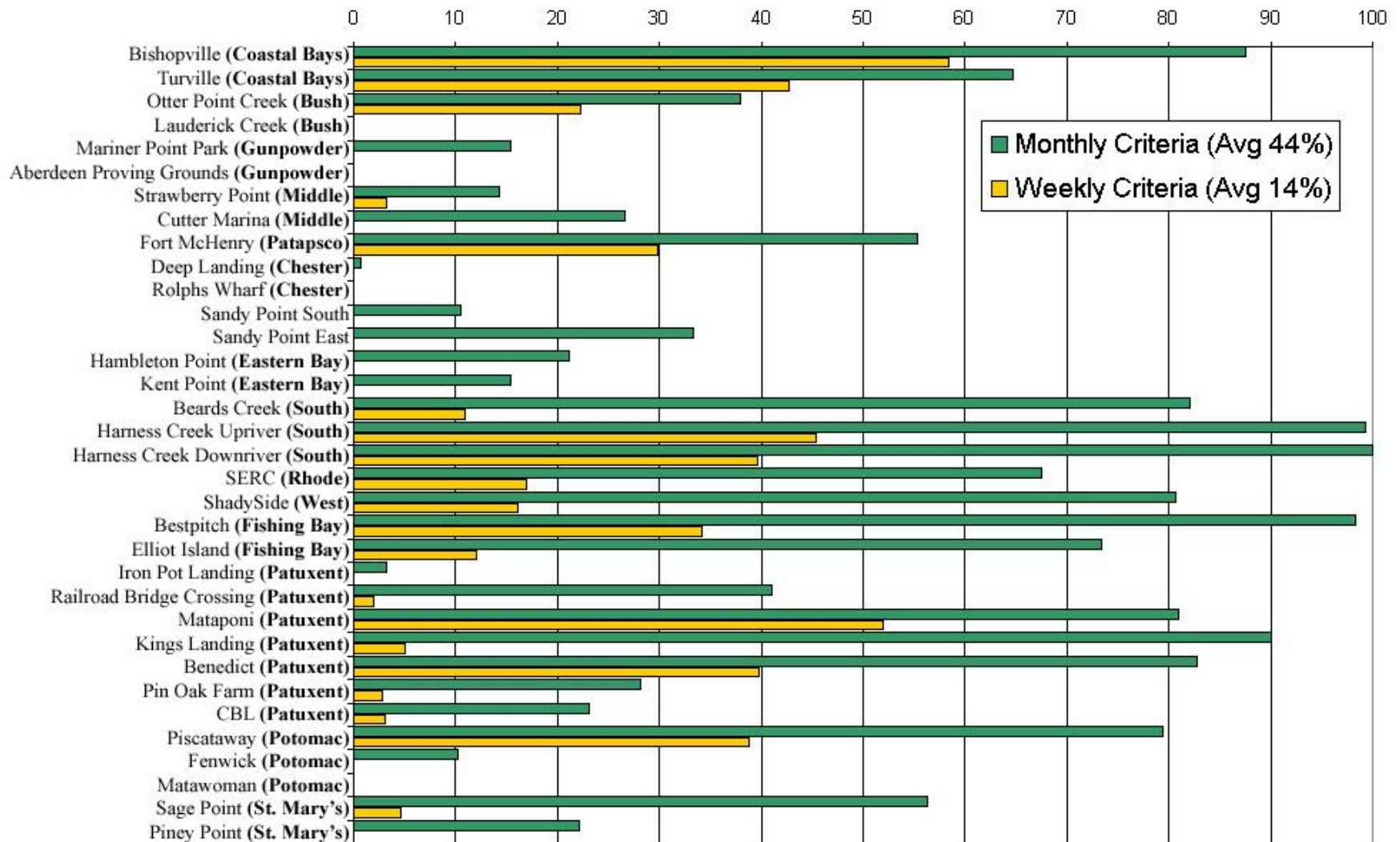


# 2004 30-Day Dissolved Oxygen Criteria

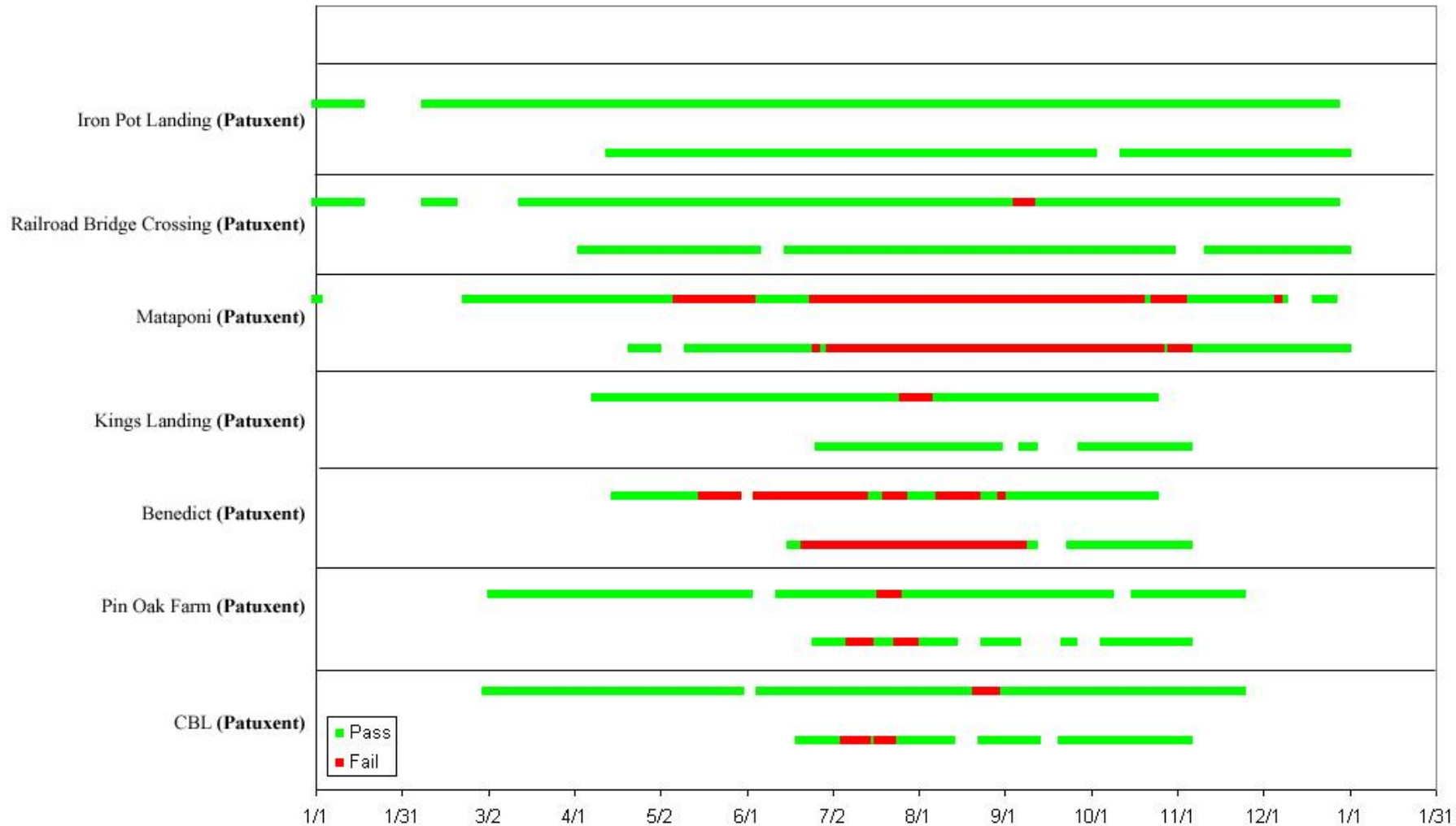
Failing determined by at least 10% of data within a 30-day window exceeding the 5.5 mg/l threshold



# 7-day and 30-day Criteria Comparison



# Comparison of 2003 and 2004 Patuxent River 7-day Criteria





# Instantaneous Dissolved Oxygen Criteria

Percent of all values for a station within a year failing the 3 mg/l threshold

