

Chesapeake Healthy Watersheds Assessment

SIGNALS OF CHANGE INDICATORS TO SERVE MULTIPLE OUTCOMES - GIT
CHAIRS MEETING SUMMARY OCTOBER 29, 2019

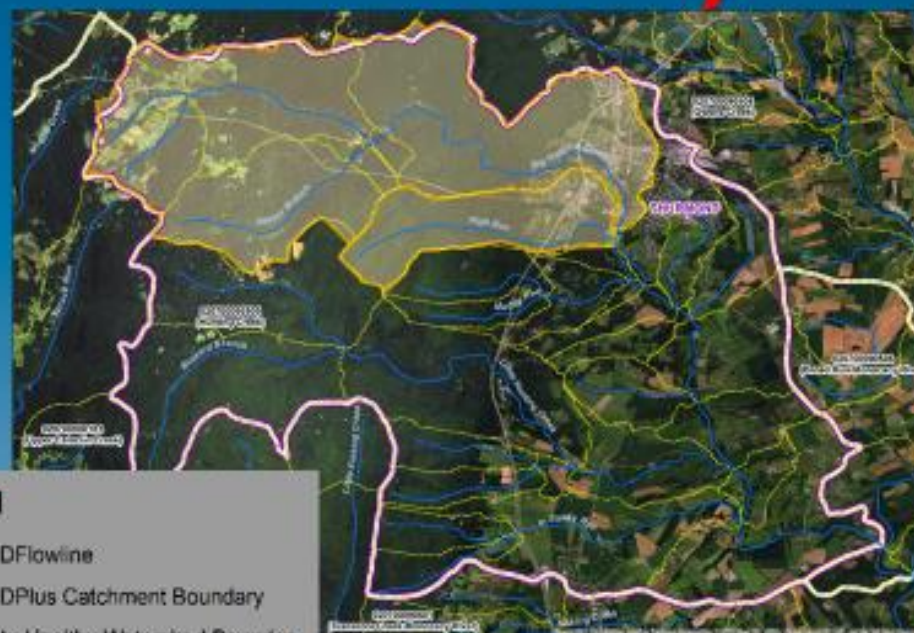
Where it all started

EPA's Preliminary Healthy Watersheds Assessment (PHWA)

- EPA's Healthy Watersheds program brought together key, nationally consistent data to assess watershed health and vulnerability.
- EPA's PHWA included a set of 48 statewide and 85 ecoregional-scale assessments of watershed health and vulnerability across the conterminous United States.
- The PHWA was intended to serve as a useful framework that could be built upon by states and regions. To support further use and refinement, EPA produced state-specific geodatabases including a suite of indicators at the 12-digit hydrologic unit code (HUC) scale.

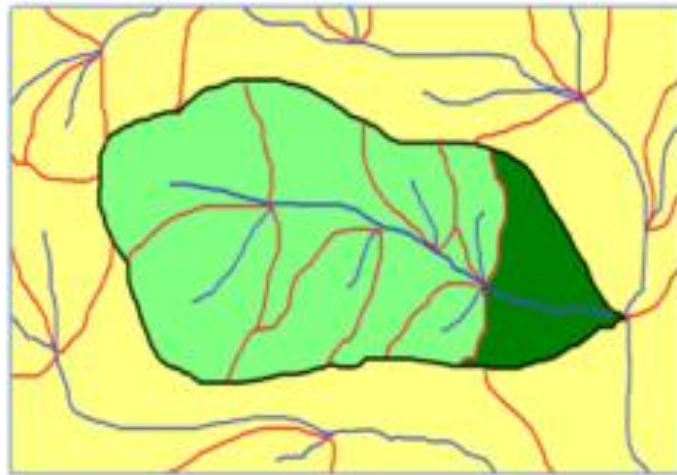
Addressing Watershed Scale

- PHWA developed nationally to provide data at HUC12 scale; this regional application required finer scale
- Developed metrics at NHDPlus catchment scale
- Calculated for all 83,623 catchments in Chesapeake watershed (average area $\sim 2 \text{ km}^2$)

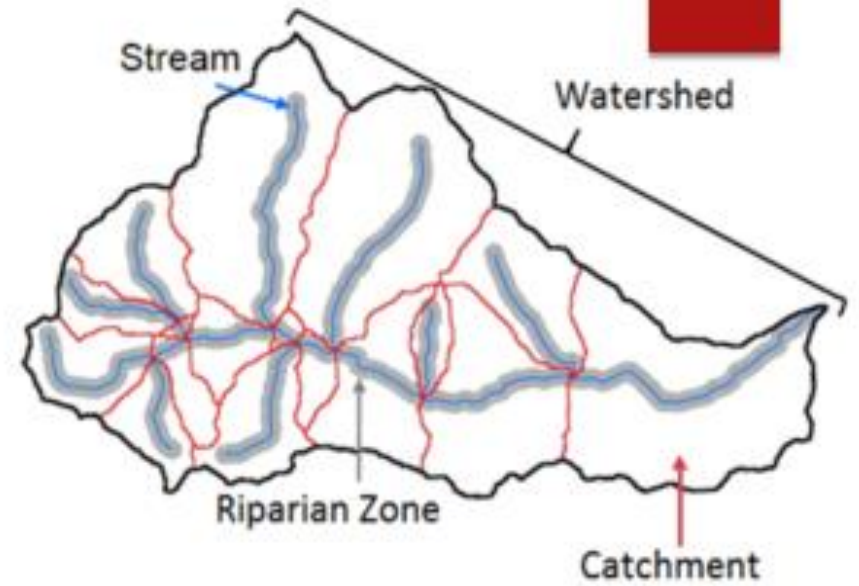


Legend

- NHDFlowline
- NHDPlus Catchment Boundary
- State Healthy Watershed Boundary
- HUC-12 Boundary



- Catchments at Outlet of Healthy Watersheds
- Other Catchments Within Healthy Watersheds
- Catchments Outside of Healthy Watersheds



SCALE OF ANALYSIS

Chesapeake Bay Watershed Health Index



Landscape Condition



Hydrology



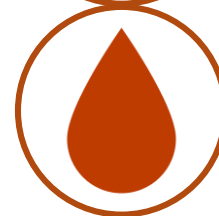
Geomorphology



Habitat

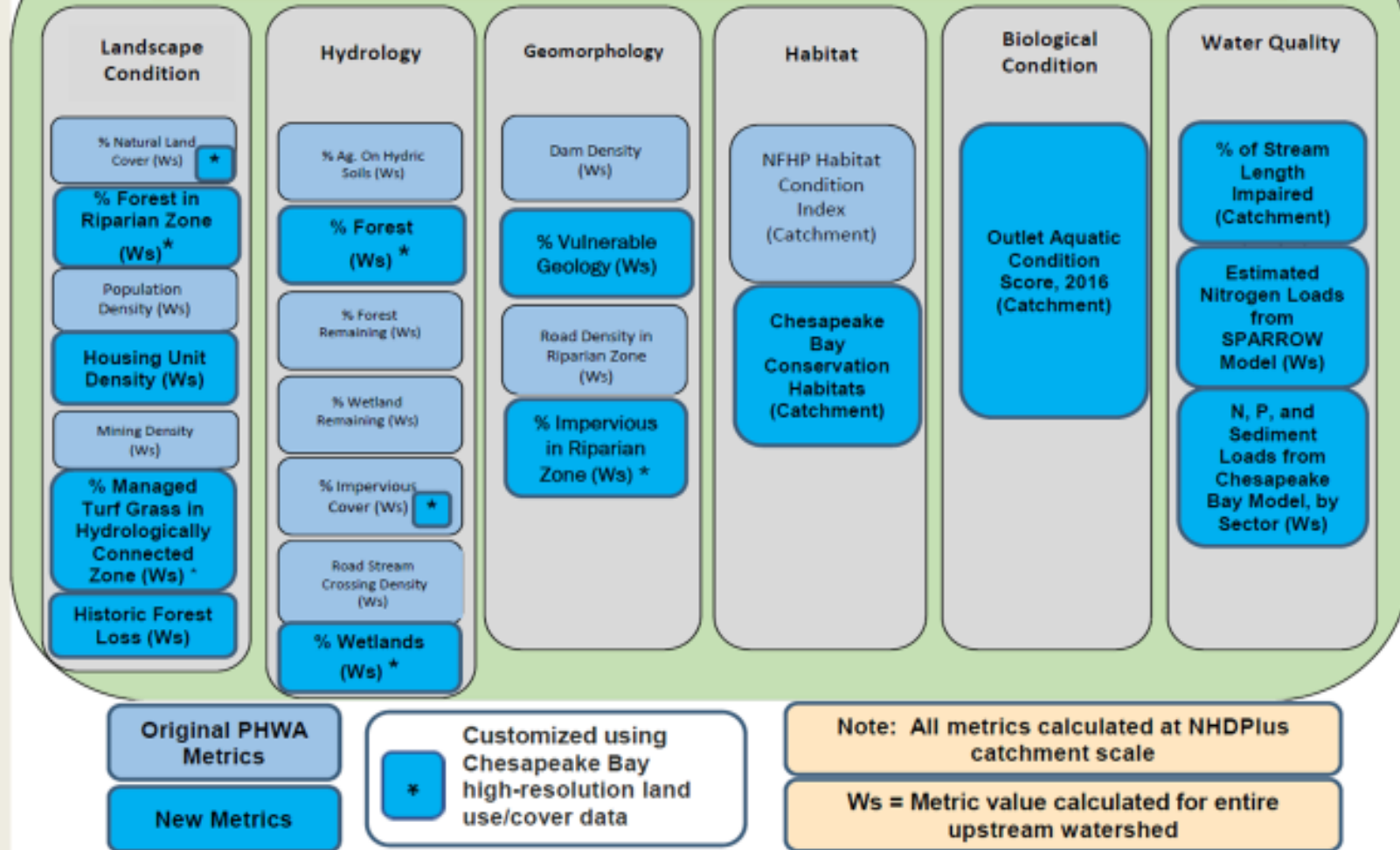


Biological Condition

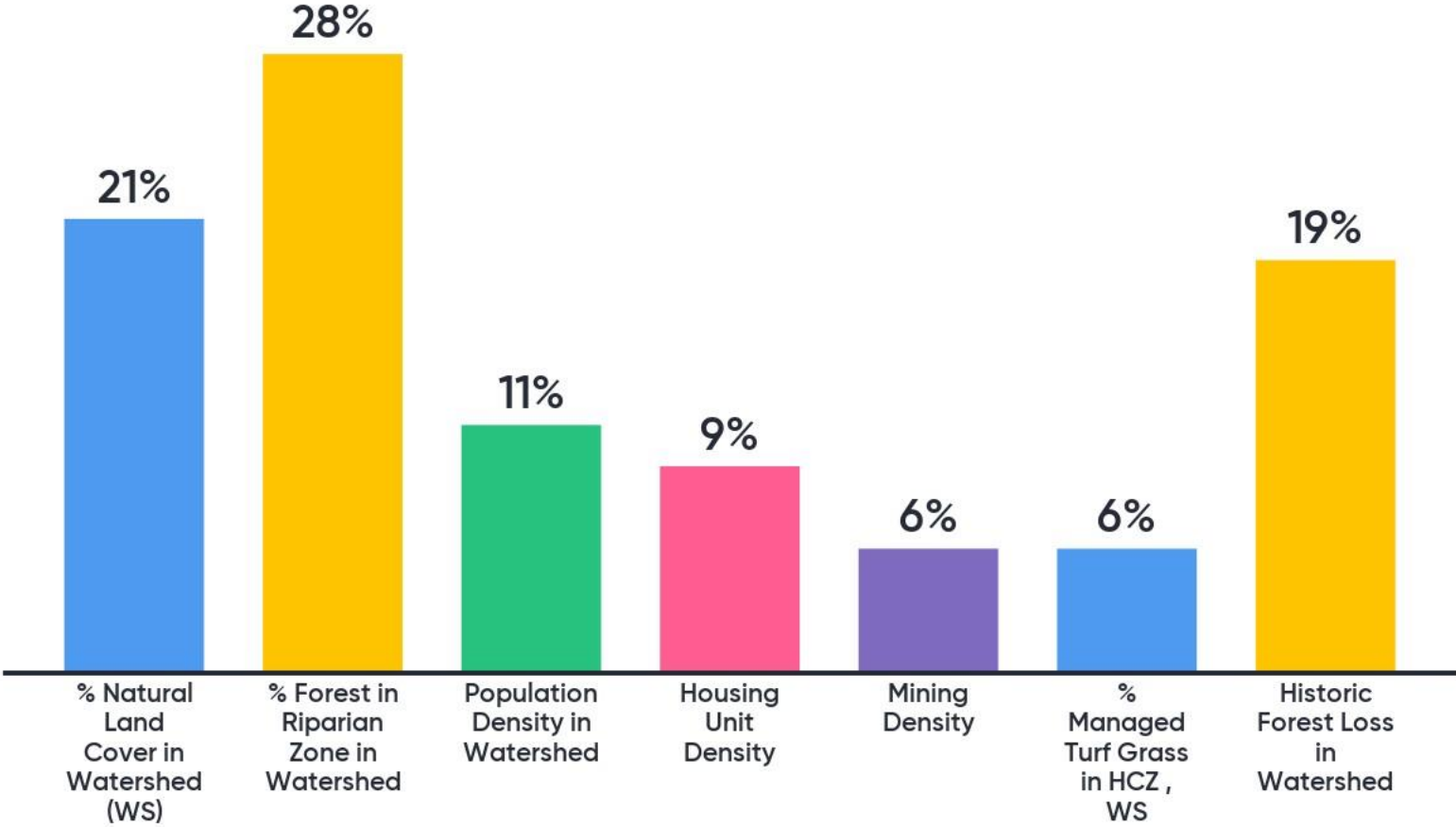


Water Quality

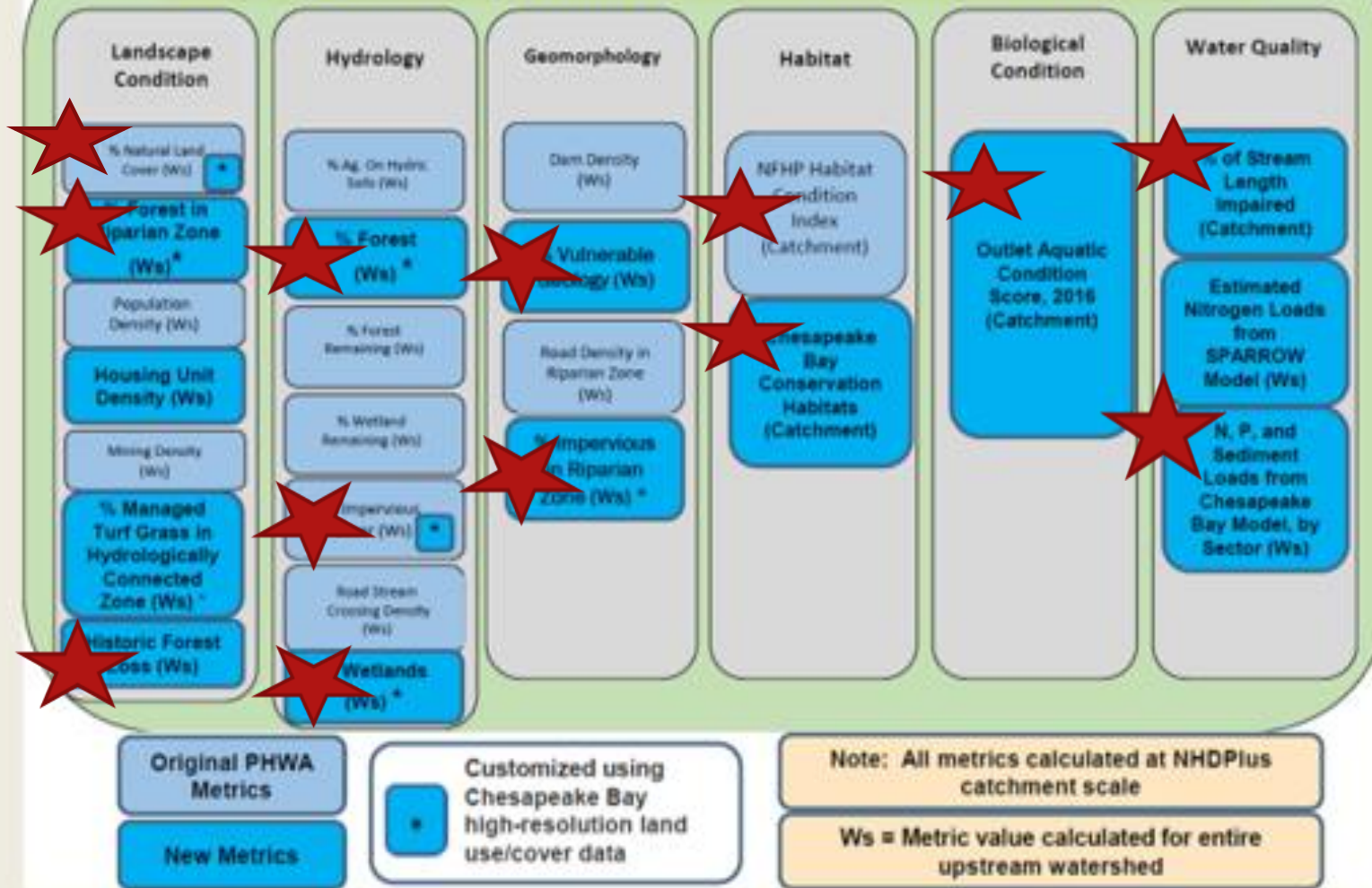
Chesapeake Bay Watershed Health Index **DRAFT**



What are your health index priorities? (Landscape Condition)



Chesapeake Bay Watershed Health Index **DRAFT**



CHESAPEAKE BAY WATERSHED VULNERABILITY INDEX



Land Use Change



Water Use

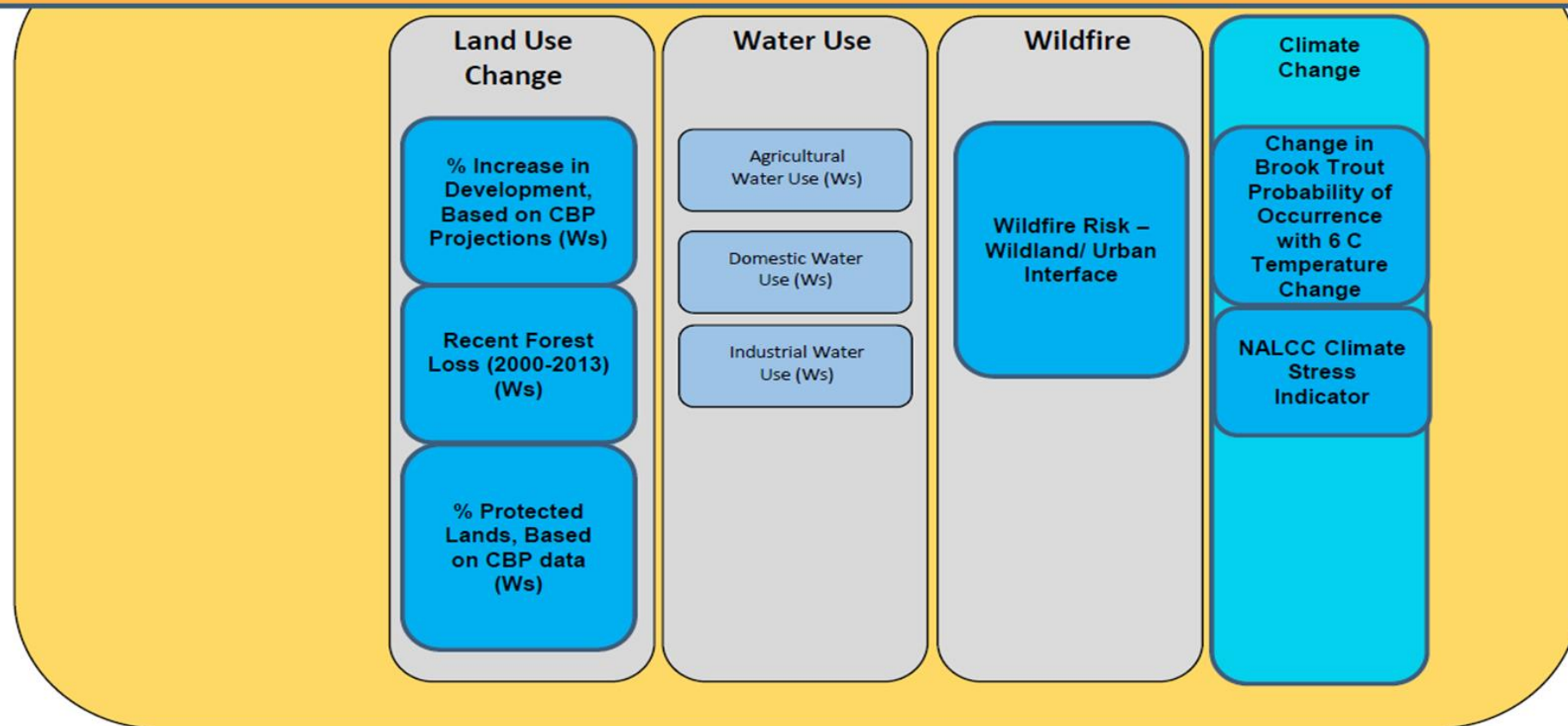


Wildfire



Climate Change

Chesapeake Bay Watershed Vulnerability Indicators ****DRAFT****



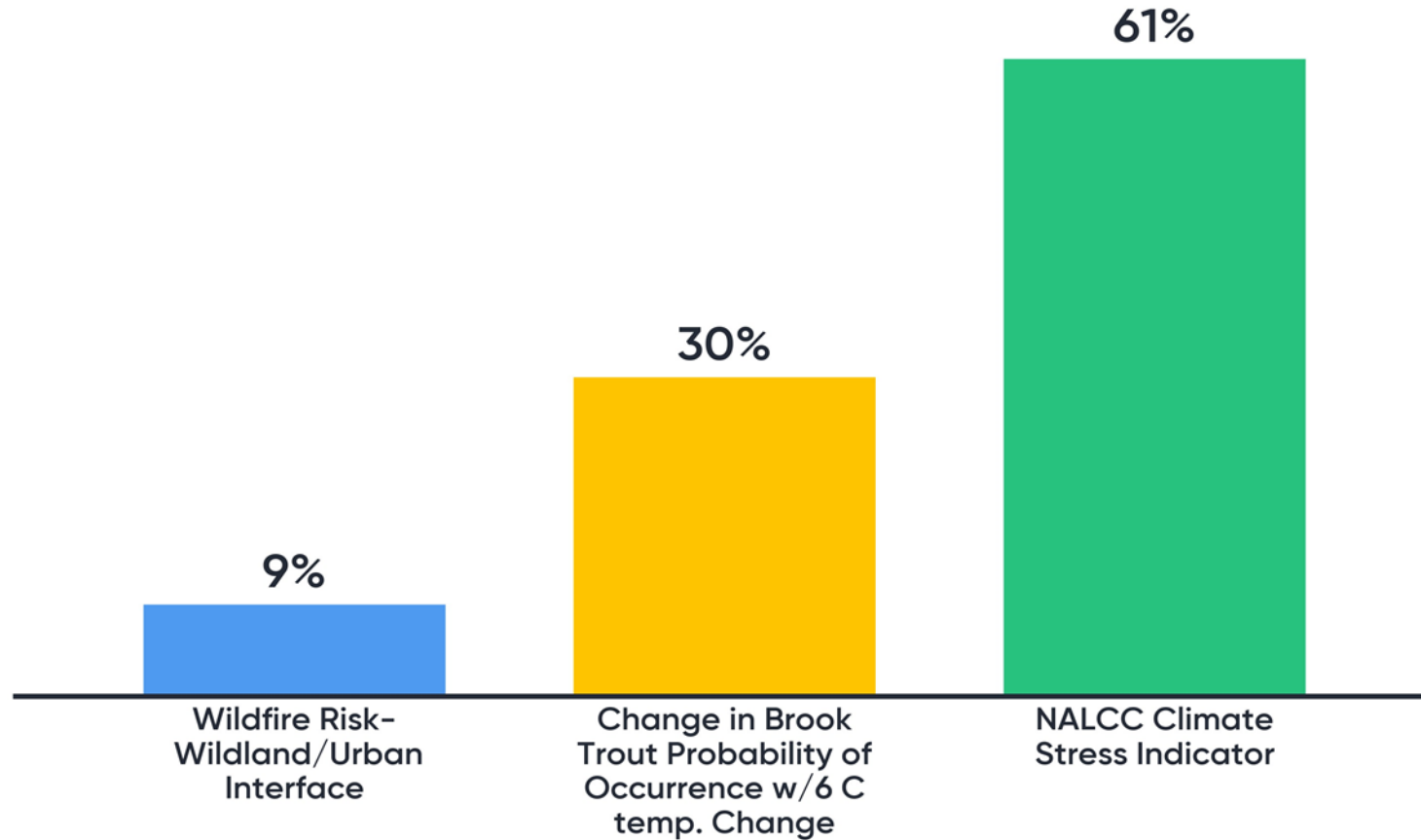
Original PHLWA Metrics

New Metrics

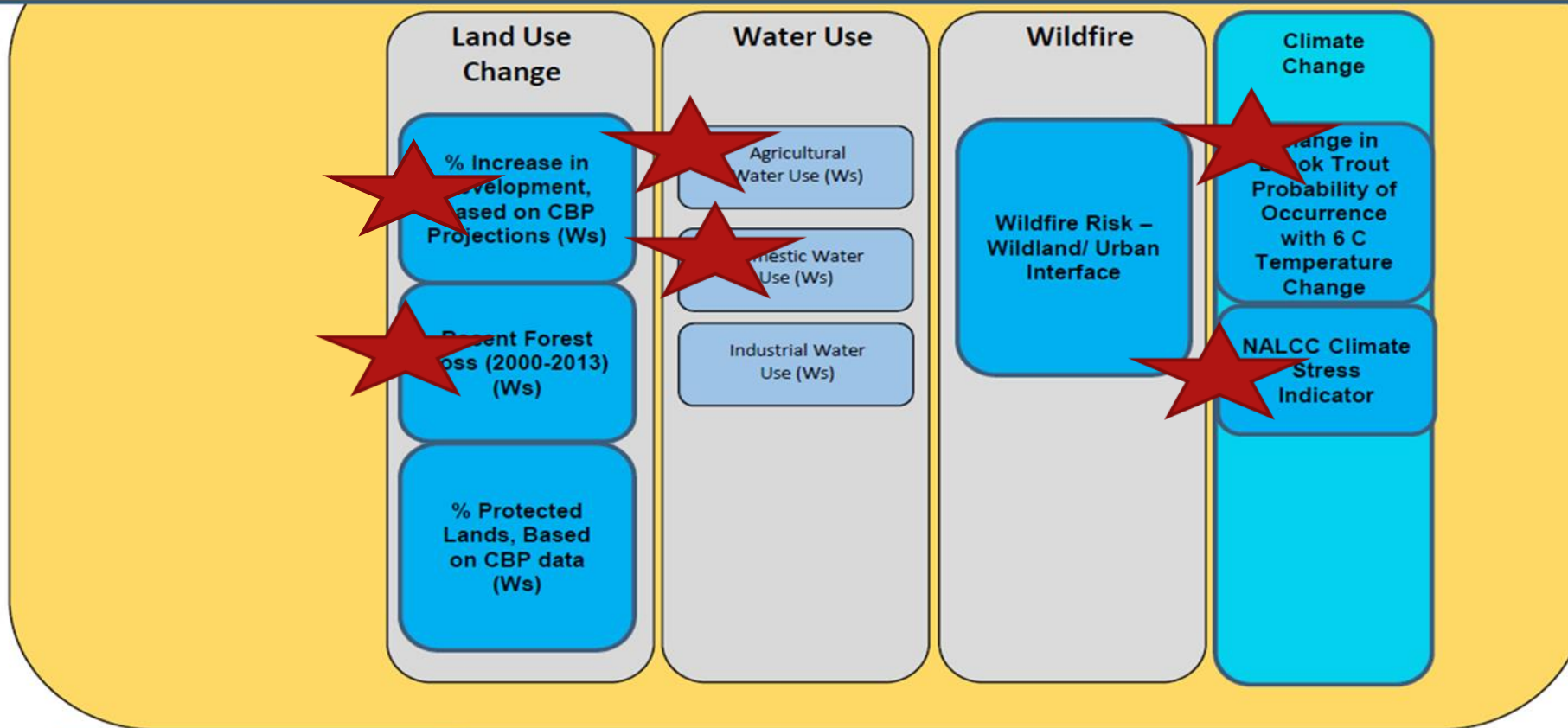
Note: All metrics calculated at NHDPlus catchment scale

Ws = Metric value calculated for entire upstream watershed

What are your vulnerability index priorities (Wildfire and Climate Change)



Chesapeake Bay Watershed Vulnerability Indicators ****DRAFT****



Original PHWA Metrics

New Metrics

Note: All metrics calculated at NHDPlus catchment scale

Ws = Metric value calculated for entire upstream watershed

WATERSHED HEALTH
AND VULNERABILITY

What other
data should
be included?

What metrics are missing?



WATERSHED HEALTH
AND VULNERABILITY

Cross-GIT Mapping

WATERSHED
HEALTH AND
VULNERABILITY

Data Dashboard

ADDING THESE “SIGNALS OF CHANGE”



Stream Health

ALL INDICES RELATE TO STREAM HEALTH!



Fish Habitat

SPAWNING AREAS

WATERSHED HEALTH
AND VULNERABILITY

Management Questions

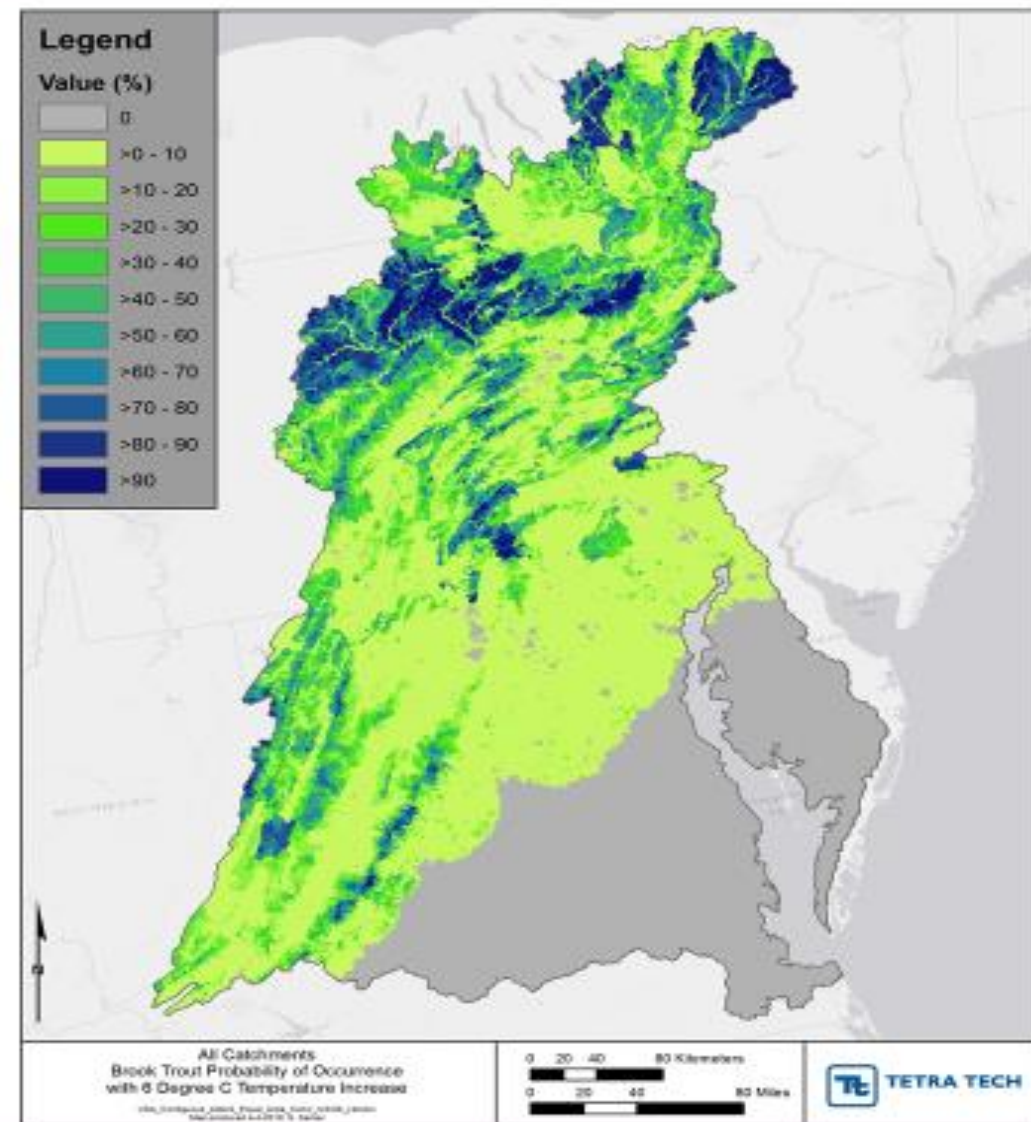
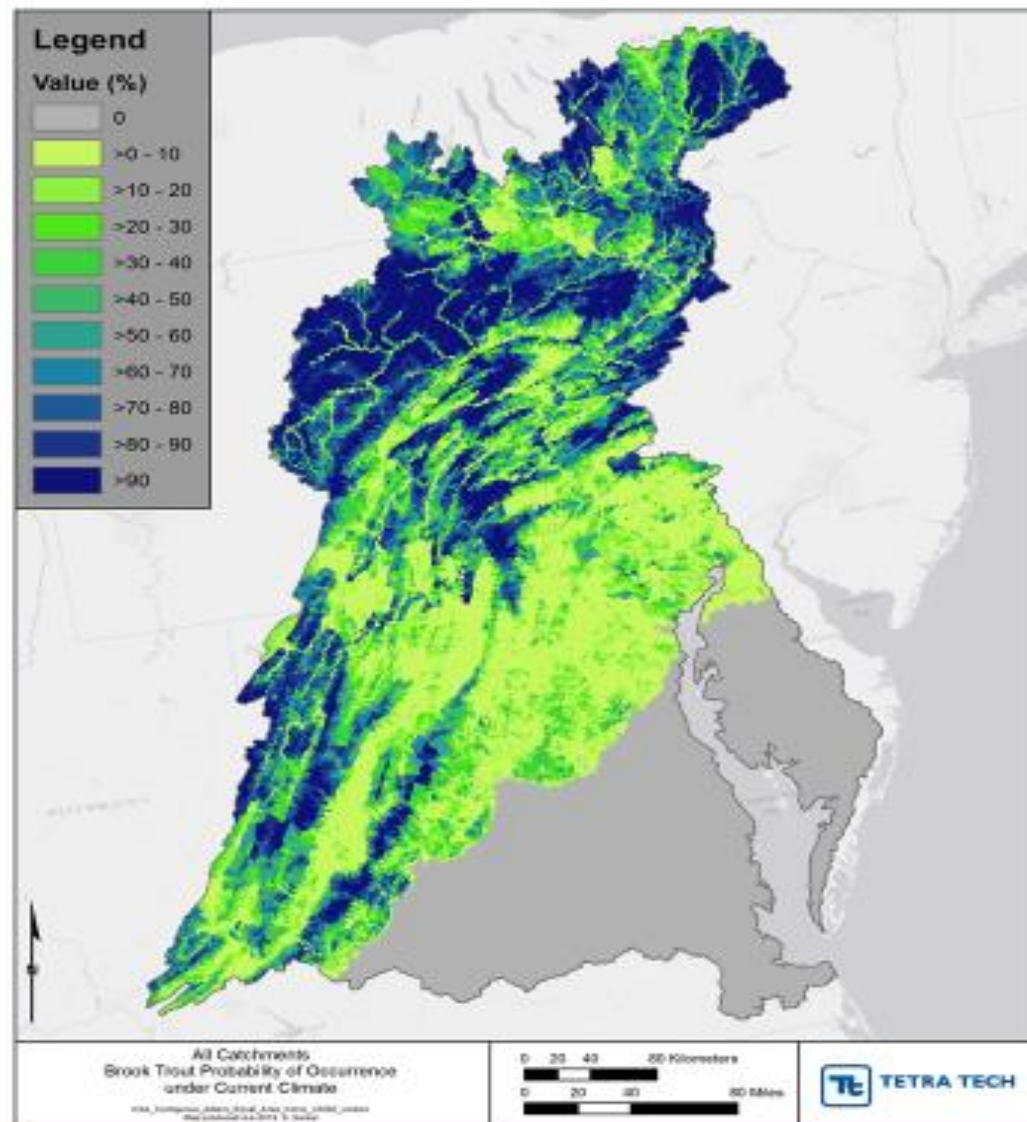
-
- % Forest Cover
 - % Impervious Cover
 - Landscape Condition Index
 - Hydrology Index
 - Geomorphology Index
 - Habitat Index
 - Biological Condition Index
 - Water Quality Index
 - Vulnerability Indices
 - Land Use Change
 - Water Use
 - Wildfire
 - Climate Change

Watershed Characteristics
(metrics and indices)

Indicators
of
Watershed Health

- Stream flow alteration
- Stream temperature alteration
- Stream / floodplain connectivity
- Aquatic community composition
- Toxics
- Emerging contaminants
- Fish Diseases
- Bacteria
- Nutrients
- Sediment

Diagnostic Measures
of Stream Health





Thank you and please make a commitment to stay involved

Kristin Saunders ksaunders@umces.edu

Renee Thompson rthompson@chesapeakebay.net

The Chesapeake Healthy Watersheds Assessment applied the framework of the EPA's Preliminary Healthy Watersheds Assessment to compile metrics related to the health and vulnerability of all NHD Plus catchment regions in the Chesapeake Bay Watershed. The final product will include Bay-wide geospatial data delivered as a geodatabase that has potential to inform multiple outcomes aside from Healthy Watersheds. Although the final product will not be ready until early November, we have some ideas of how to use it and how it relates to other outcomes.

Links for you to explore:

Preliminary Healthy Watershed Assessment Presentation slides

https://www.chesapeakebay.net/channel_files/38201/cbp_hw_git_meeting_june_2019_final_2019-06-06.pdf

Chesapeake Healthy Watershed Assessment Poster

https://www.chesapeakebay.net/channel_files/29905/ii.d.ches_healthywatersheds_posterugssciencecmtg61719thompson.pdf