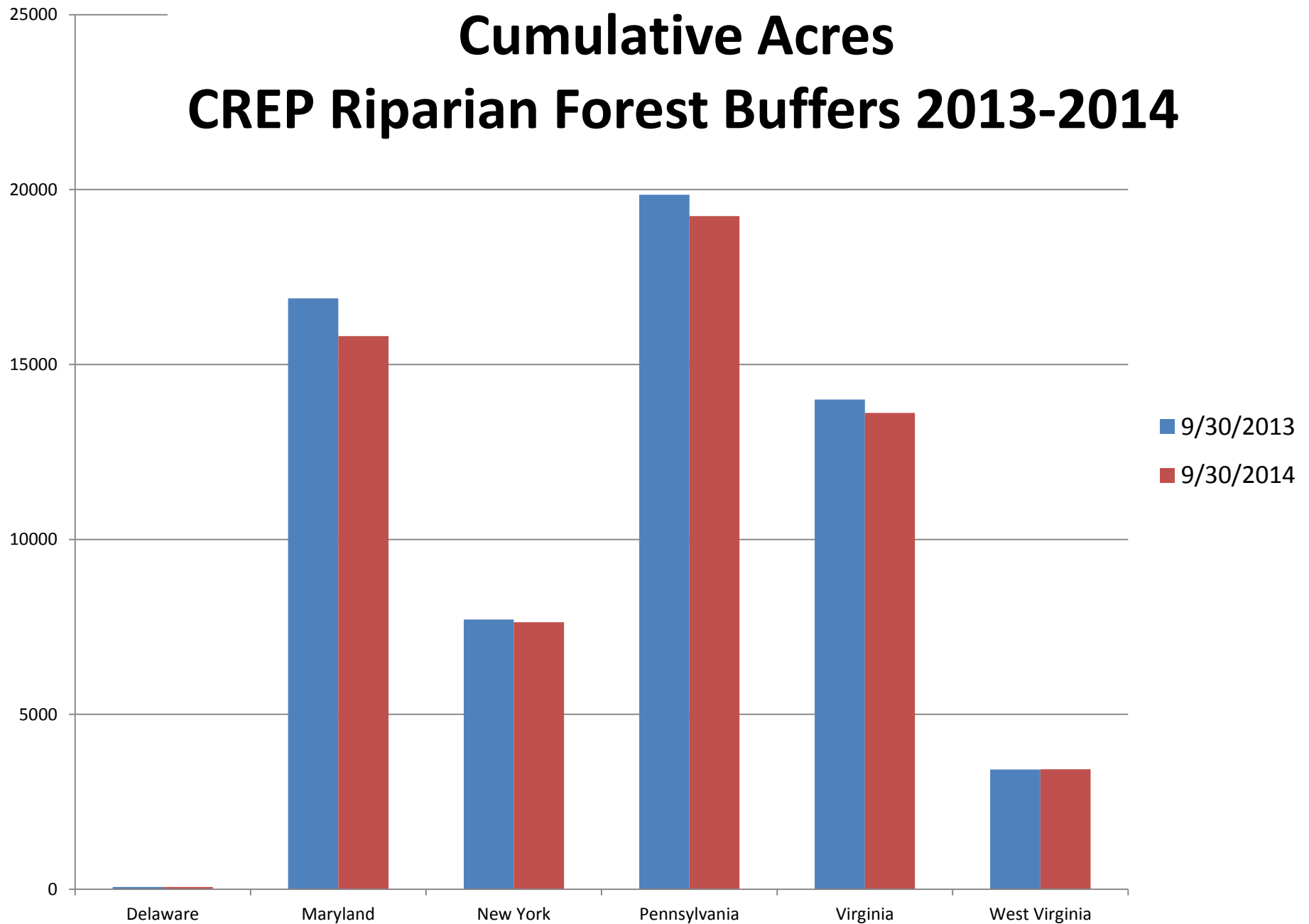
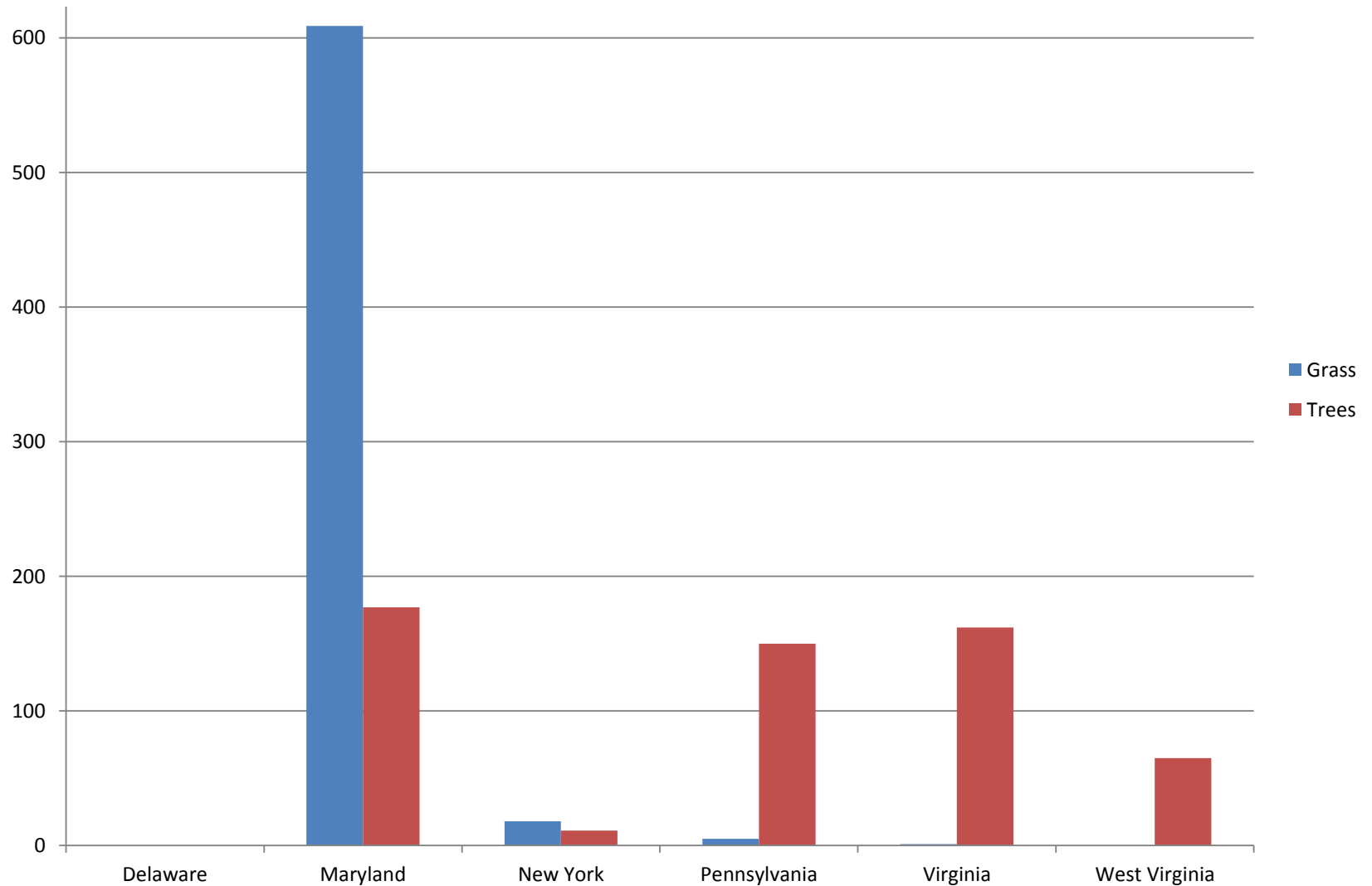


# Cumulative Acres

## CREP Riparian Forest Buffers 2013-2014

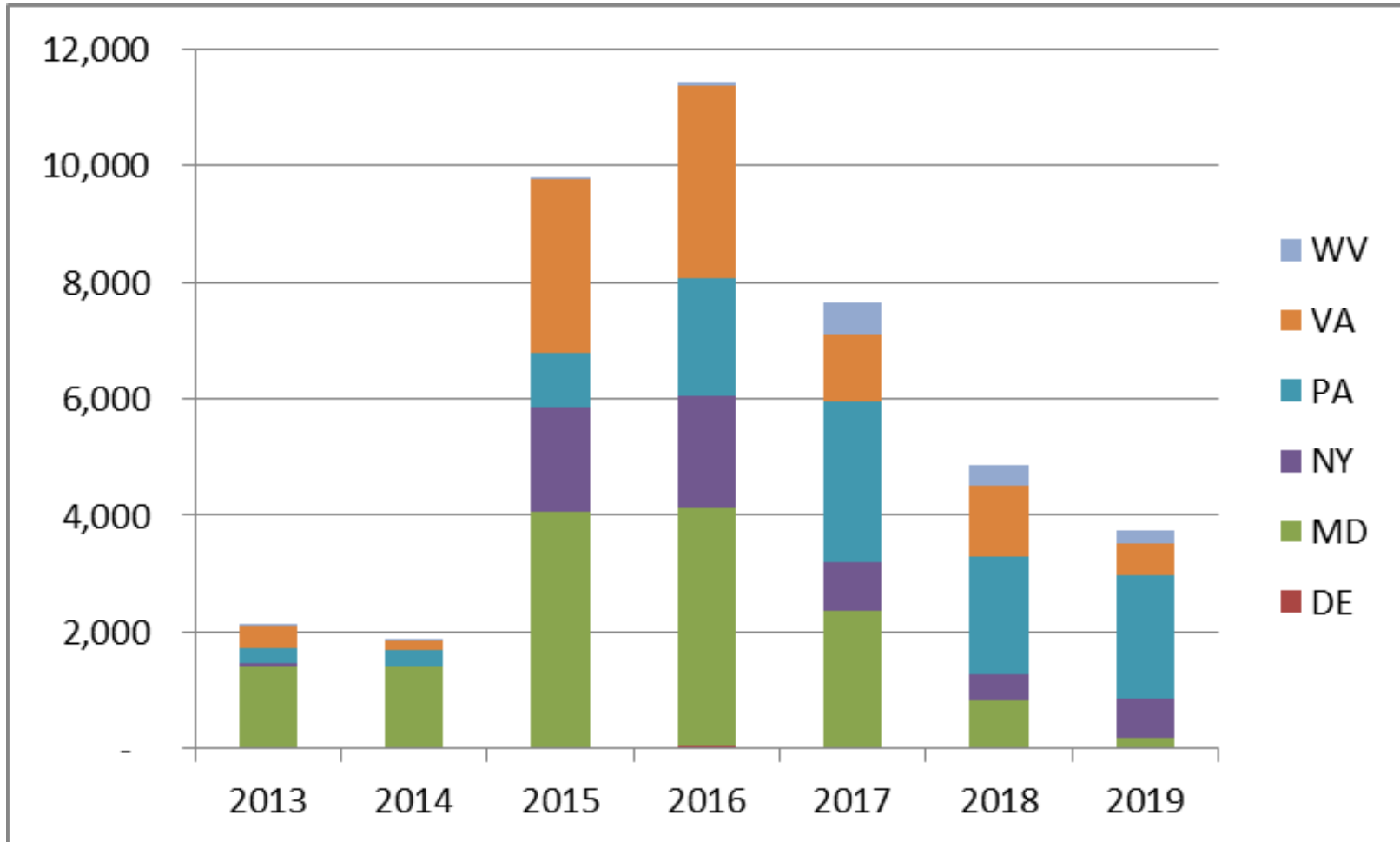


# Acres of CREP Grass vs Trees in 2012



# Expiring Contracts

## CP-22 Acres expiring 2013-2019







**New LiDAR Tree Cover Finding Areas to Improve Stream Buffers**

**Carroll County (SE of Taneytown, MD)**

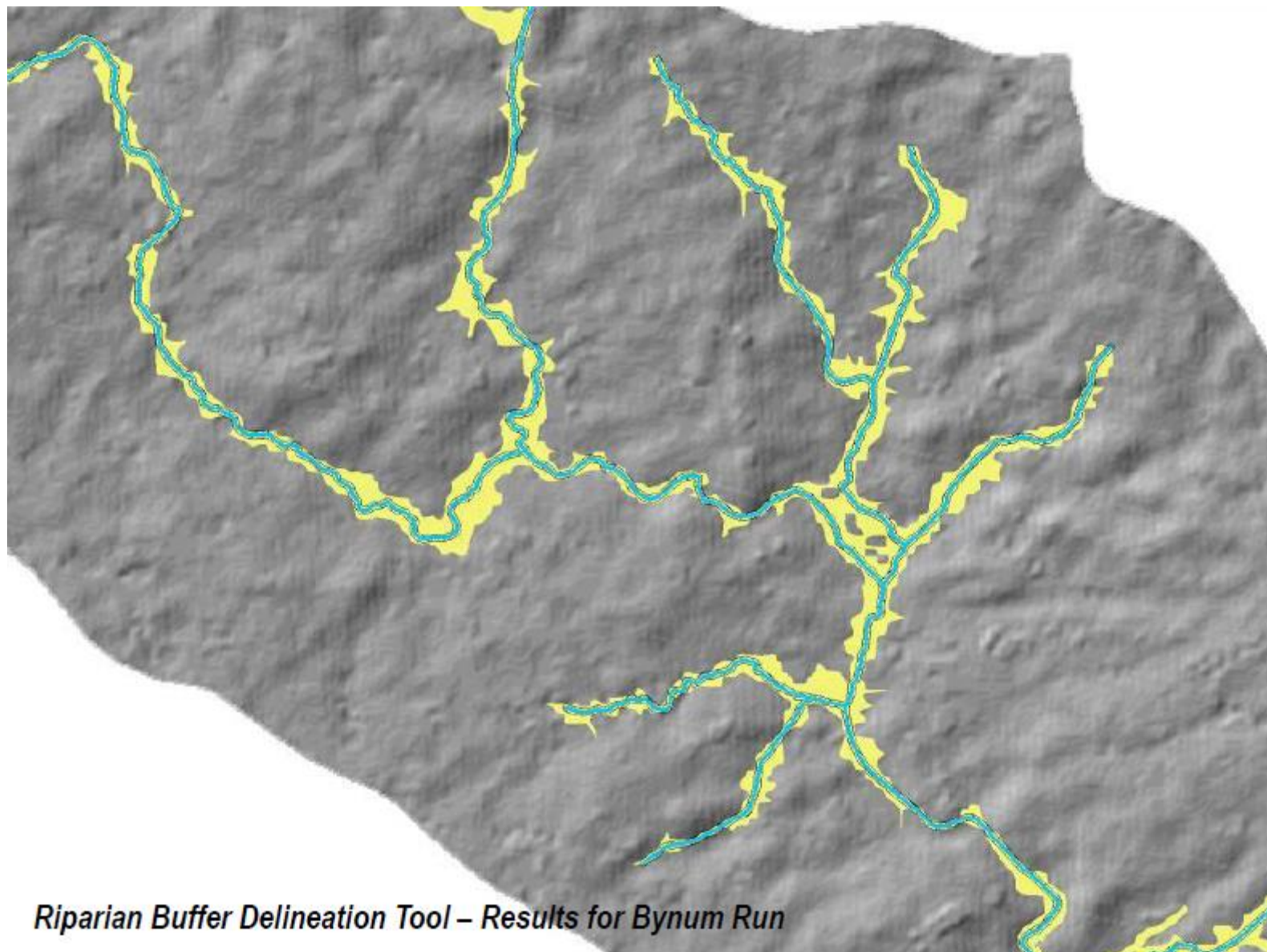
**10 Meter Segments, 35 Foot Buffer**

**Red – mostly Unbuffered (<20%)**

**Yellow – Partially Buffered**

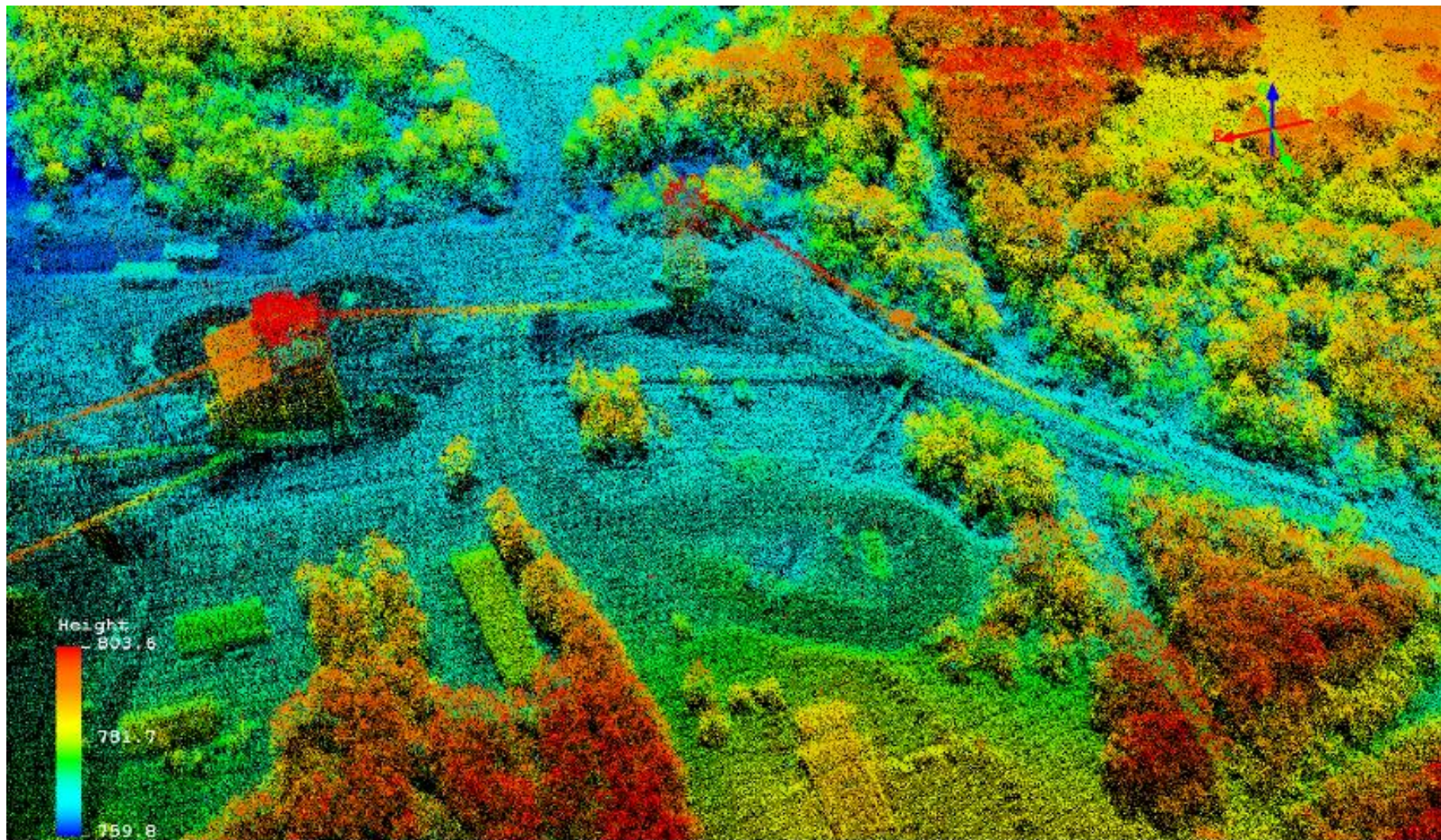
**Green – Mostly Buffered (>80%)**





*Riparian Buffer Delineation Tool – Results for Bynum Run*





High resolution provides data and details that cannot be collected through field sampling (digital terrain/bare earth and digital surface model/canopy height)