

Forest Land Conservation



CHESAPEAKE EXECUTIVE COUNCIL
**Protecting the Forests of the
Chesapeake Bay Watershed**

2007 Response to Directive 06-1

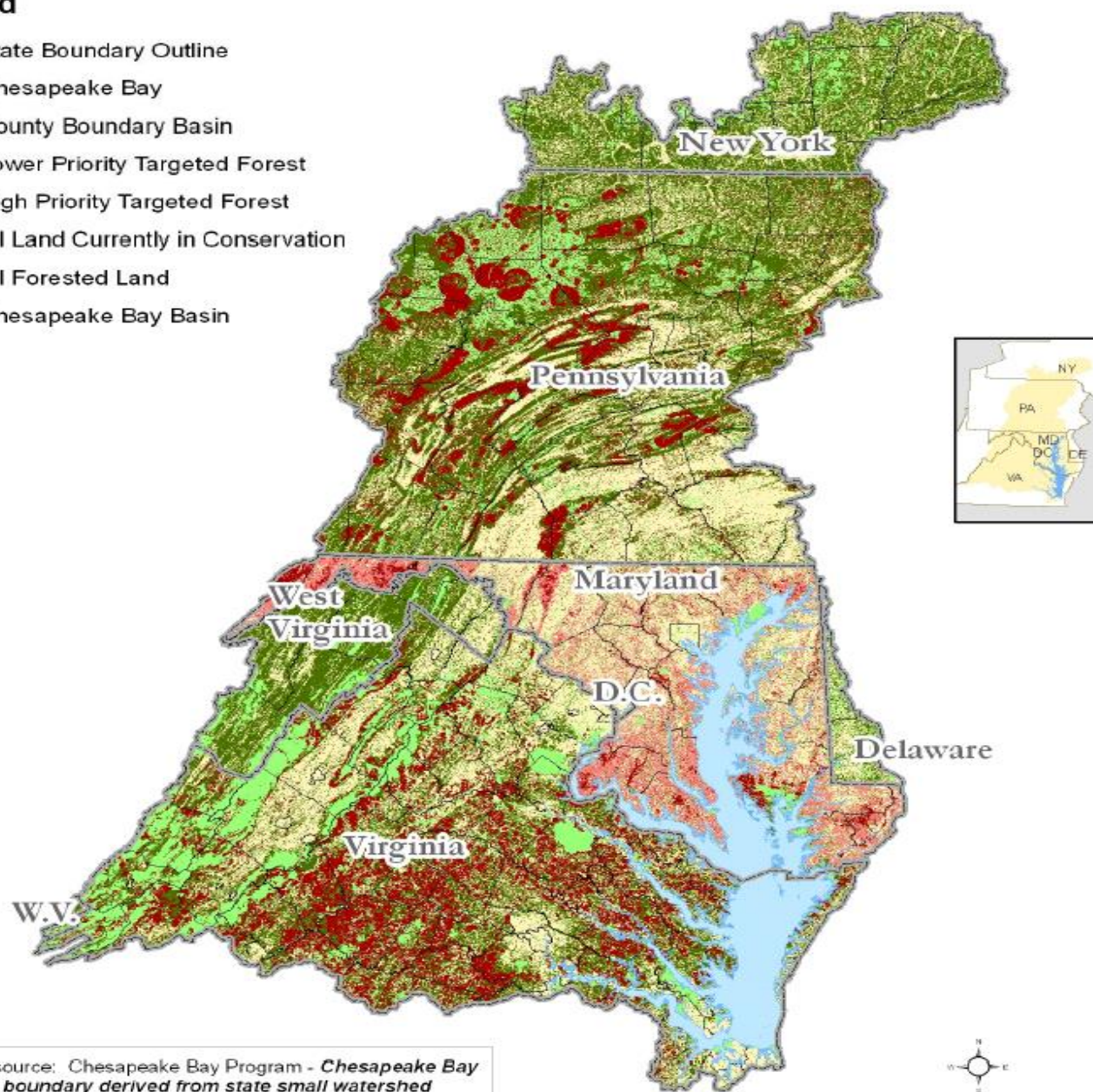
In 2006, the Chesapeake Executive Council recognized that retaining, expanding, and sustainably managing forest lands is essential to restoring a healthy Chesapeake Bay by signing Directive 06-01. This implementation document responds to Directive 06-1 by identifying specific actions we will take to...

State Proposed Available High Priority Forested Conservation Lands

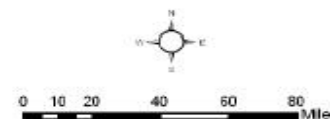
Chesapeake Bay Program
12/20/2010 10:00 AM

Legend

- State Boundary Outline
- Chesapeake Bay
- County Boundary Basin
- Lower Priority Targeted Forest
- High Priority Targeted Forest
- All Land Currently in Conservation
- All Forested Land
- Chesapeake Bay Basin

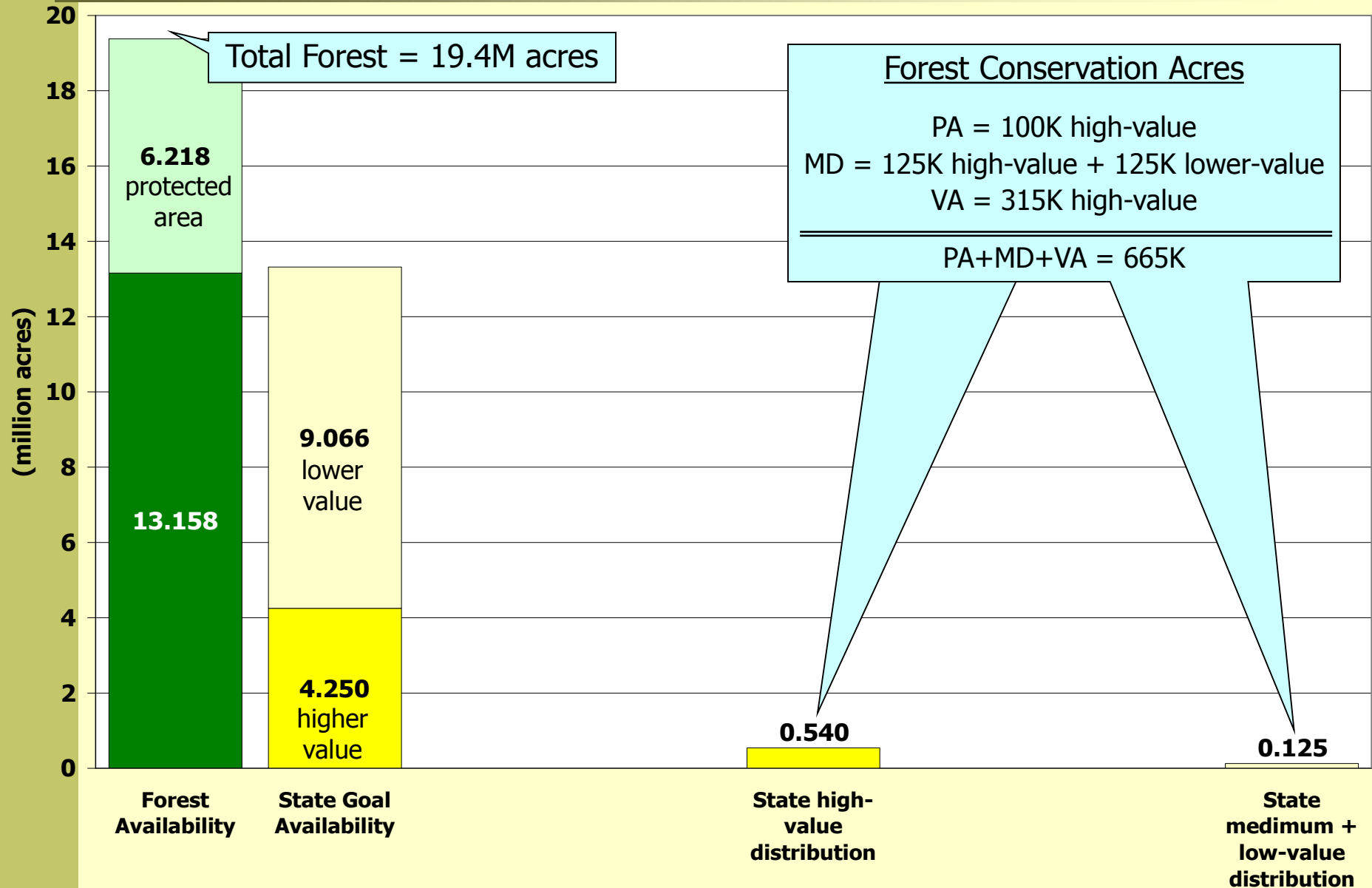


Data source: Chesapeake Bay Program - *Chesapeake Bay* basin boundary derived from state small watershed boundaries. Forest Cover from RESAC 2000 Land Cover. PA, MD, and VA Forest Conservation Target Layers from PADCNr, MDDNR, and VA Dept. of Forestry



Landuse Method for Forest Conservation Scenarios

Distribution According to State Conservation Values





Protecting the Forests of the Chesapeake Bay Watershed

By 2020, permanently protect 695,000 acres, targeting forests in areas of highest water quality value. Of this, 266,400 acres of forest land under threat of conversion will be protected by 2012.

State*	Total Forest in Watershed (acres)	Forest Already Protected (acres)	2012 Protecting Goal (acres)	2020 Protecting Goal (acres)
Delaware	175,900	48,400 (28%)	5,000	15,000
Maryland	2,358,000	724,000 (31%)	96,000	250,000
New York	2,433,000	295,000 (12%)	5,800	15,000
Pennsylvania	8,716,000	2,896,000 (33%)	38,500	100,000
Virginia	8,367,000	2,093,000 (25%)	135,000	315,000

*The District of Columbia will focus on a goal to increase urban tree canopy coverage, in lieu of forest protection. The urban tree canopy goal is in addition to implementing goals to facilitate retaining existing trees in priority areas.

HISTORY OF PROTECTED FOREST in Chesapeake Bay watershed

All time

All Forest in CBW:
6.58 million acres

High Value Forest in CBW:
3.31 million acres

Protected Forest Since 2011

All Forest in CBW:
XXXX acres

High Value Forest in CBW:

XXXX acres



Land Conservation Mgmt Strategy Approaches

- Identify and fill gaps in conservation priorities
- Align land conservation priorities with funding opportunities
- Build capacity of land trusts
- Increase funding and incentives
- Increase public support
- Involve young people and diverse communities

Proposed Forest Conservation Mgmt Approaches

- Develop high-value forest conservation maps for watershed
 - One watershed-wide layer (requested in larger MS and needed for updated landcover/consistency/headwater states)
 - Could be done by a 3rd party in consultation with FWG
 - Consider forest habitat
 - County-level forest patch maps (like MD's GI maps)
- Establish a Forest Conservation Action team
 - Include land trusts, watershed orgs, etc
 - Go over actions in WLCS
 - Report to Chesapeake Large Landscape Collaborative

Conservation Mgmt Approaches, Con't

- Promote economics of conserved forests, e.g.,:
 - use of water quality trading/growth offsets to help/create permanent working forests
 - Work with drinking water companies to learn about water quality risks and assess opportunities for forest conservation
 - Evaluate state agricultural easement programs are incorporating working forests
 - Strategy to increase Forest Legacy
- Others?