



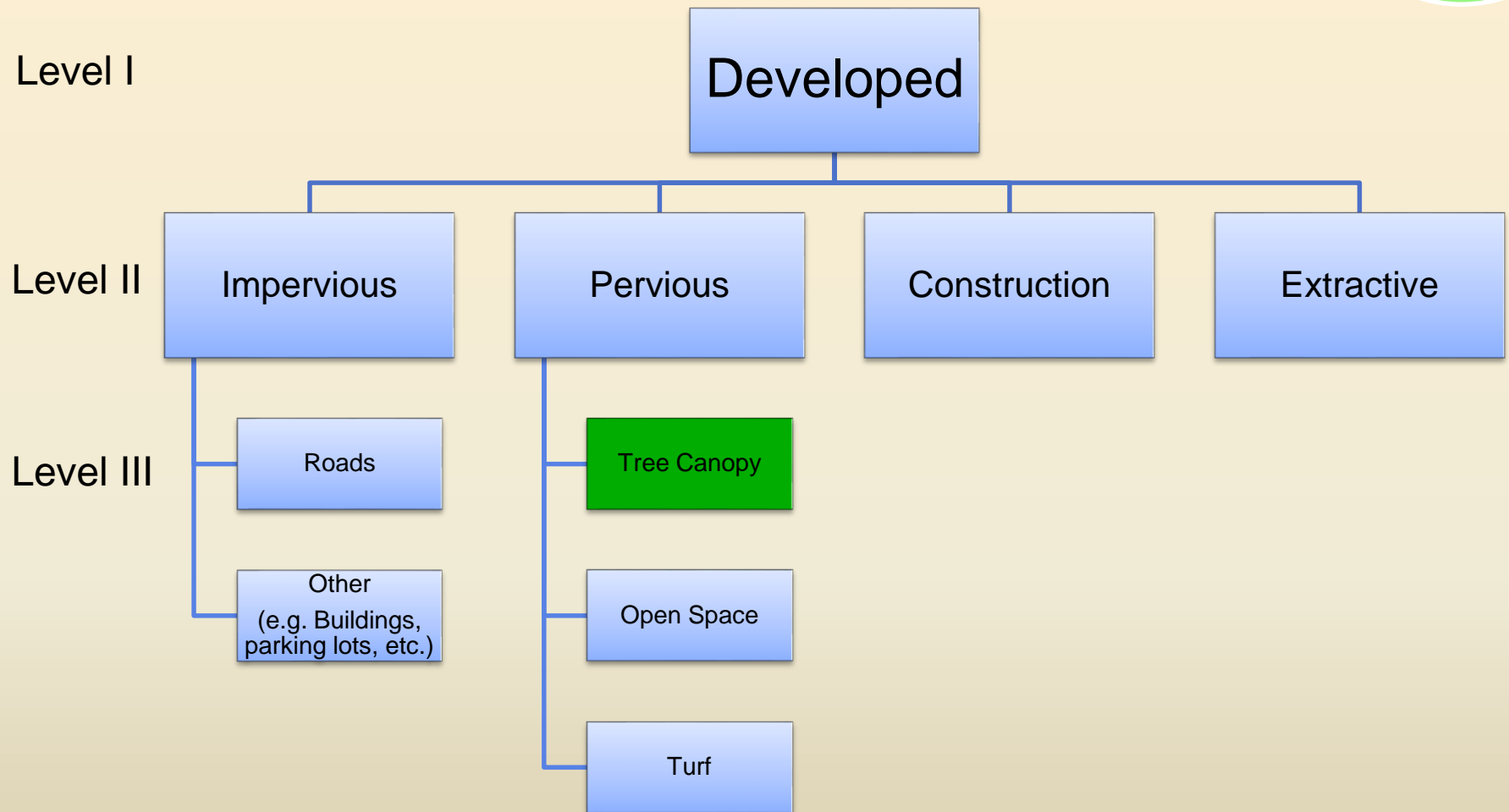
**Chesapeake Bay Program**  
*A Watershed Partnership*

# P6 Trees

**Peter Claggett, U.S. Geological Survey**  
**Quentin Stubbs, U.S. Geological Survey**

# Proposed Developed Phase 6 Land Uses

Developed



# Proposed Developed Phase 6 Land Uses

Natural

Level I

Natural

Level II

Forests

Wetlands

Water

(e.g., lakes, streams and ponds)

Level III

Undisturbed

Harvested

Disturbed  
(e.g. insects, fire,  
etc.)

Tidal  
(saline & fresh)

Floodplain

Headwater/  
Depressional

# Proposed Natural Phase 6 Land Uses

Natural

## Phase 6

Forests  
Harvested forest  
Disturbed forest

Tidal wetlands  
Floodplain wetlands  
Headwater wetlands

Water\*

## Phase 5.3.2

Woody/open  
Harvested forest

Water

\* Will expand water coverage to include 1:24K National Hydrography Dataset waterbodies and possibly Dynamic Surface Water Extent.



# Proposed Phase 6 Definitions of “Forests” and “Urban Tree Canopy”

## 1. Forests

### A. Developed “urban” areas

- Patches of trees; and
- Un-fragmented by roads; and
- Buffered 10m from adjacent land uses; and
- $\geq 1$  acre and wide enough to accommodate a 1-acre circle

### B. Rural areas

- All trees

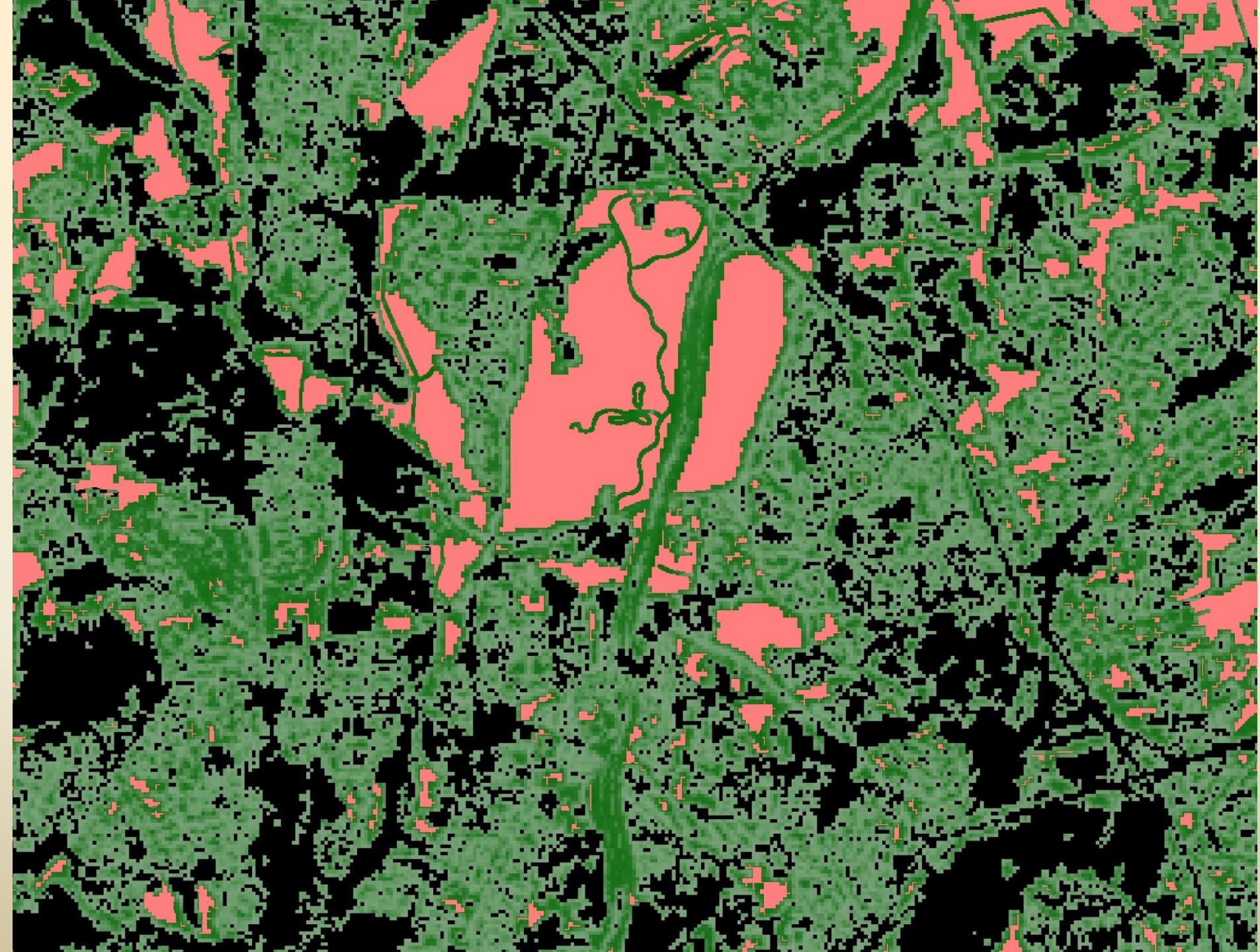
## 2. Urban tree canopy

- Trees in developed areas; and
- Within 10m of adjacent land uses; or
- In patches  $< 1$  acre

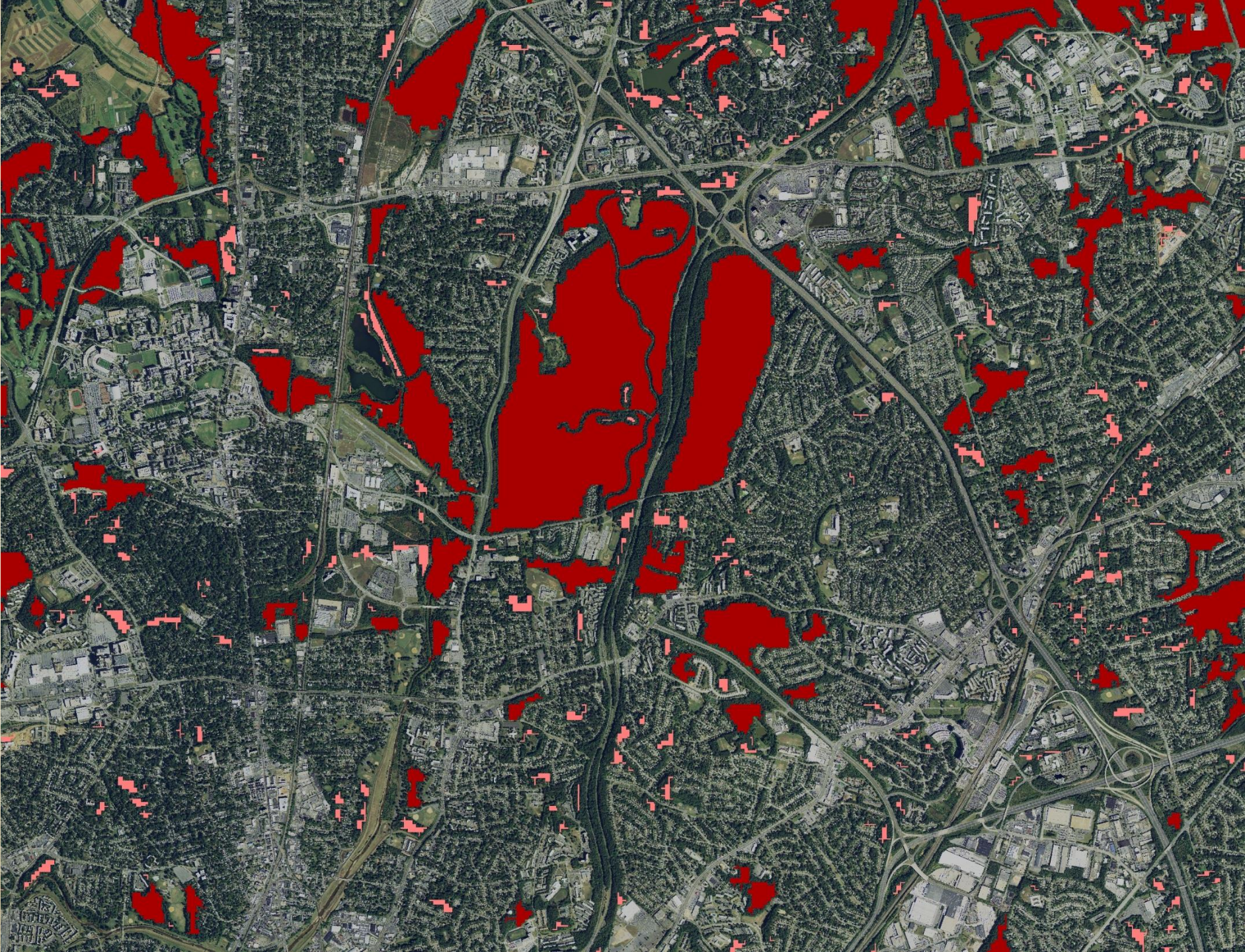




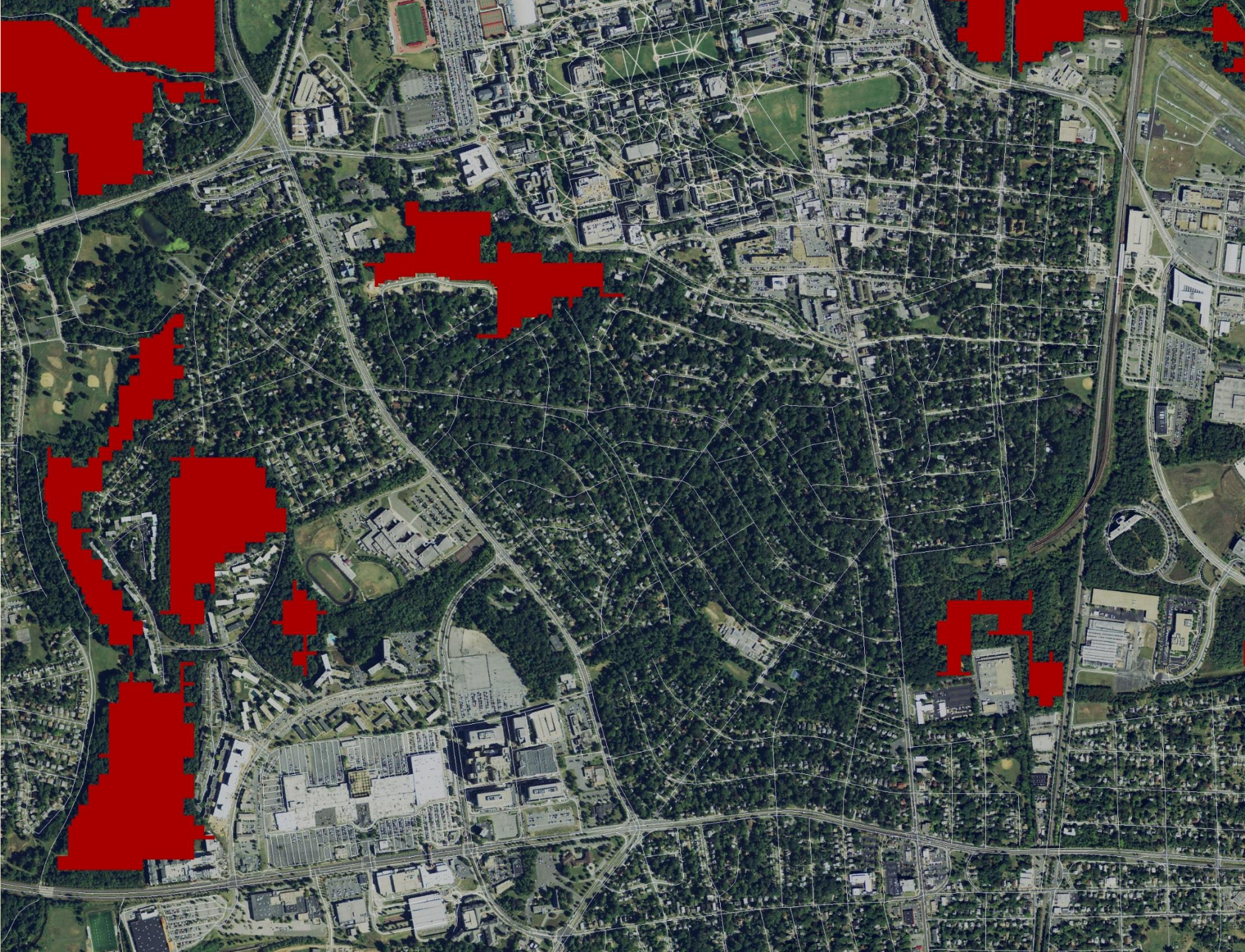




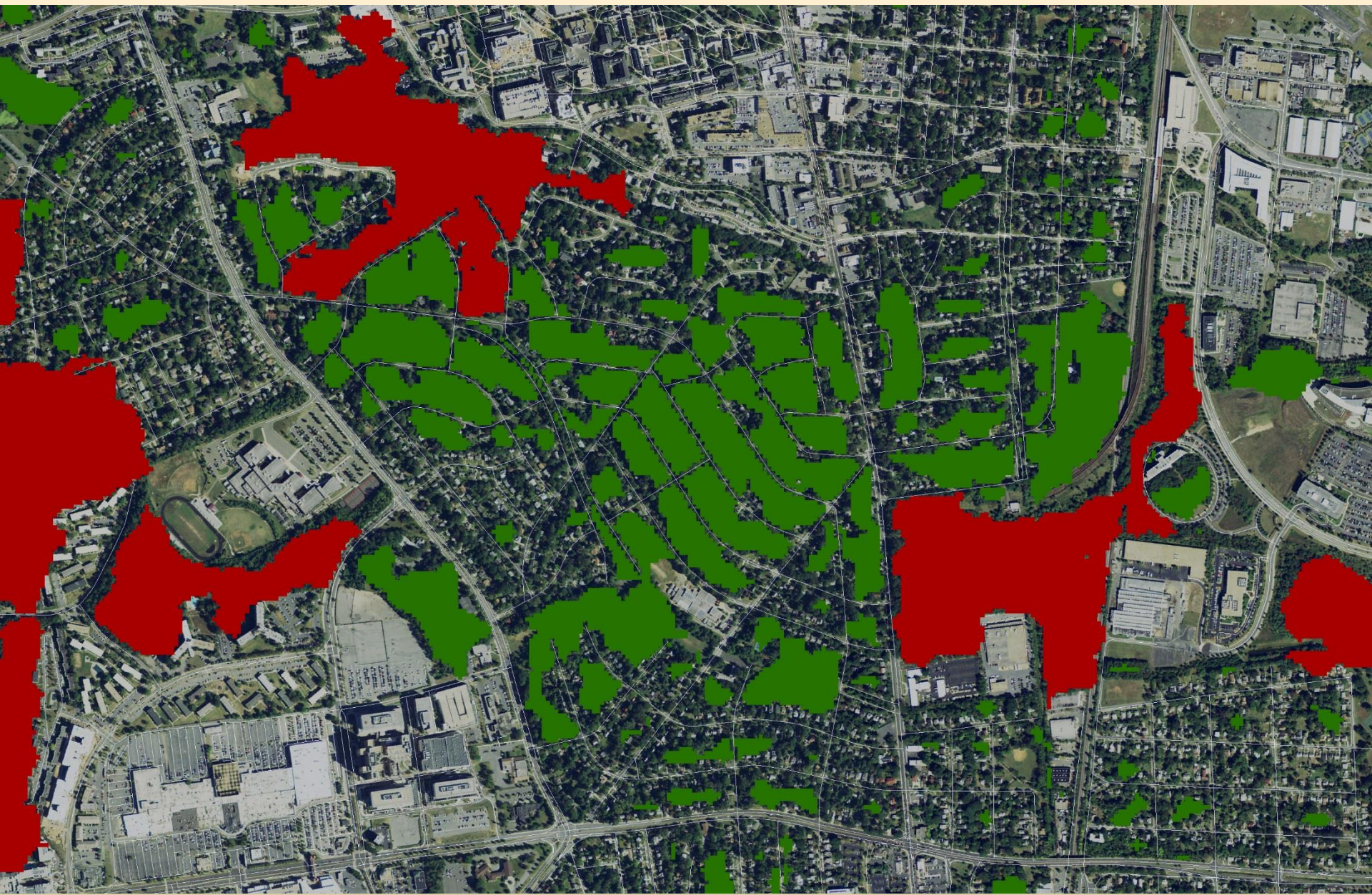




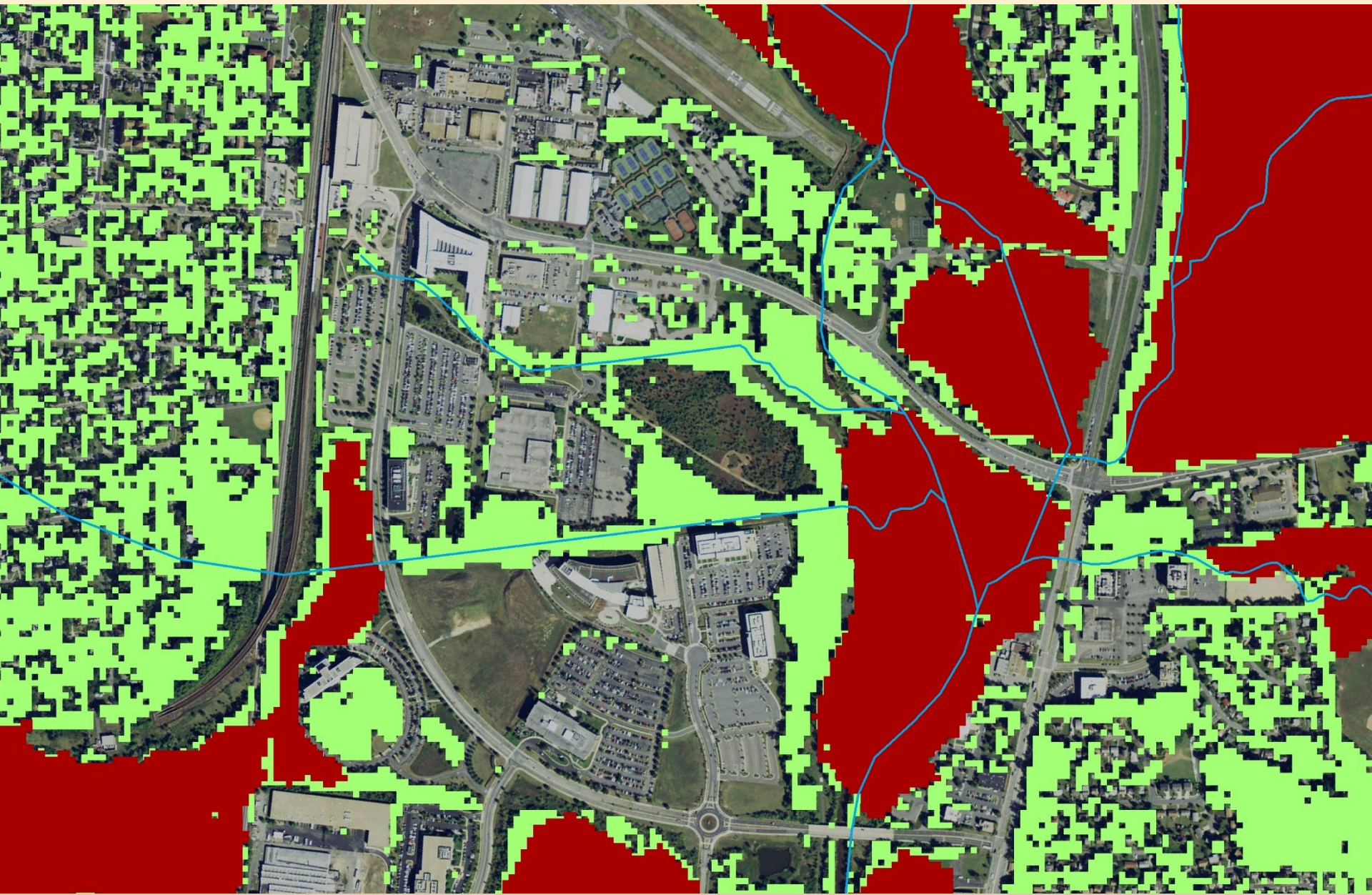




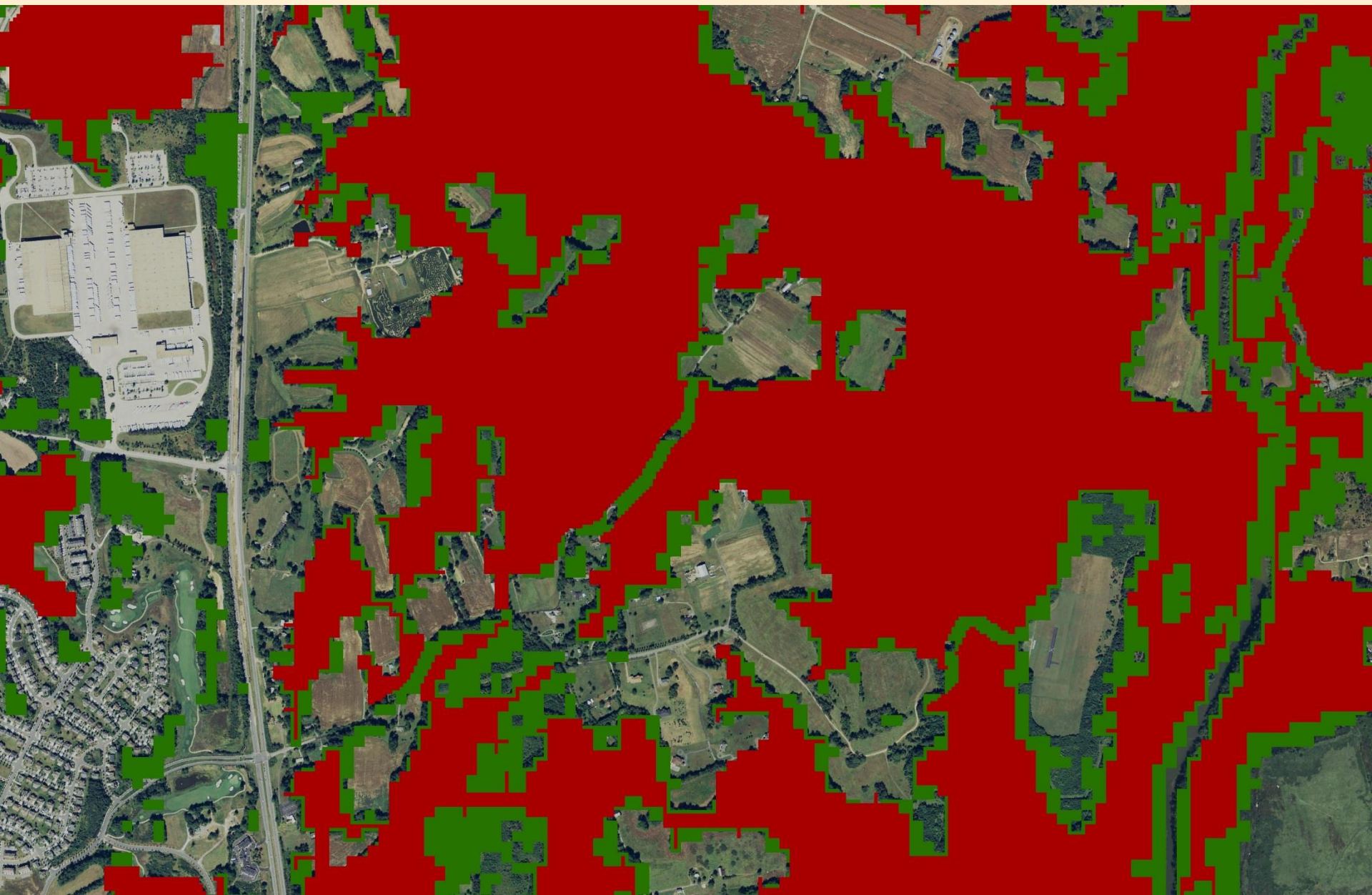














**Land Cover Data Received to Date (August 2014)**

**Land Cover Data Inventory**

- Data Received
- No Data Submitted
- State Boundaries
- Watershed Boundary
- Chesapeake Bay

0 12.5 25 50 75 100 Miles

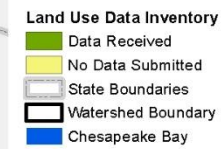


**Land Use Data Received to Date (August 2014)**

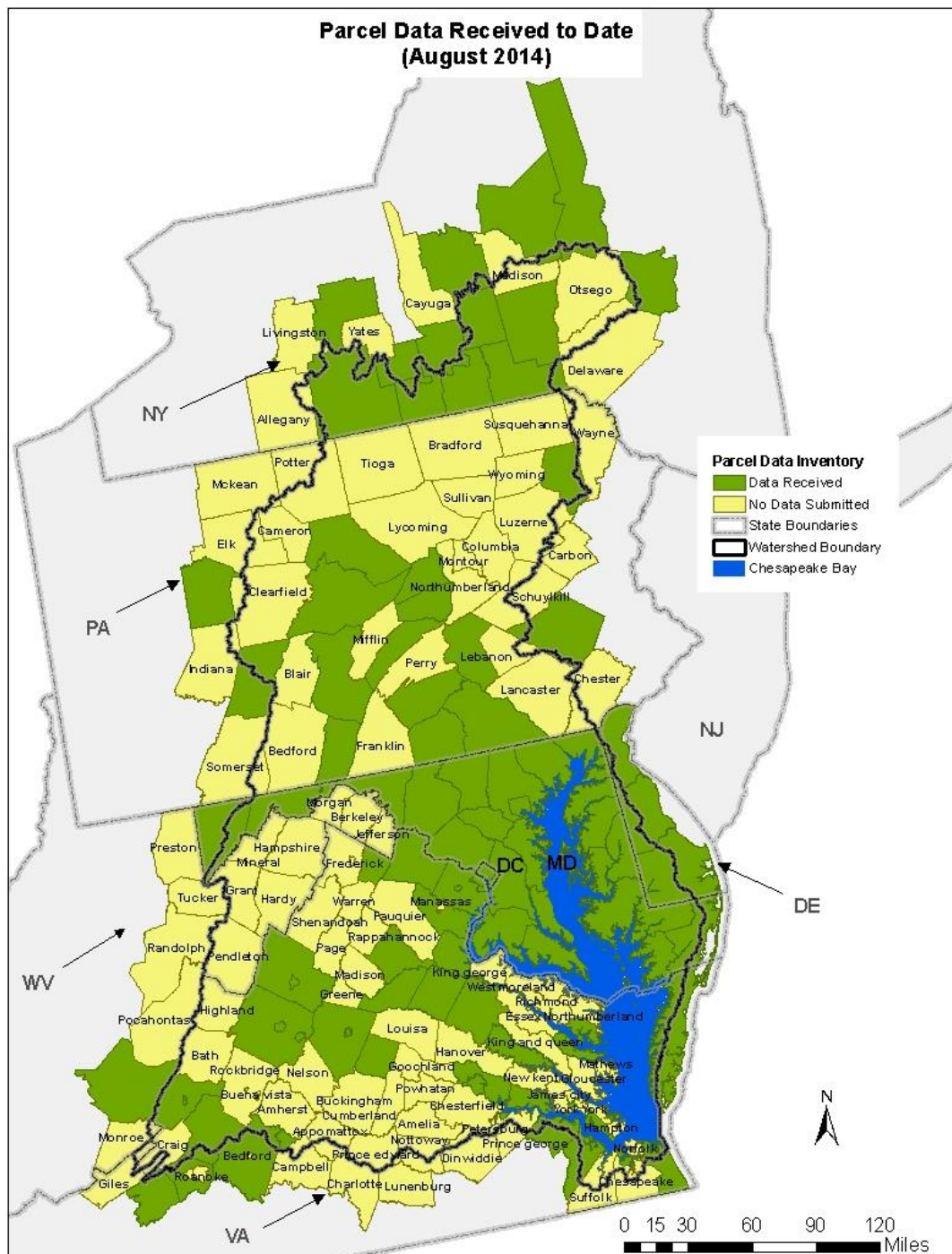
**Land Use Data Inventory**

- Data Received
- No Data Submitted
- State Boundaries
- Watershed Boundary
- Chesapeake Bay

0 12.5 25 50 75 100 Miles

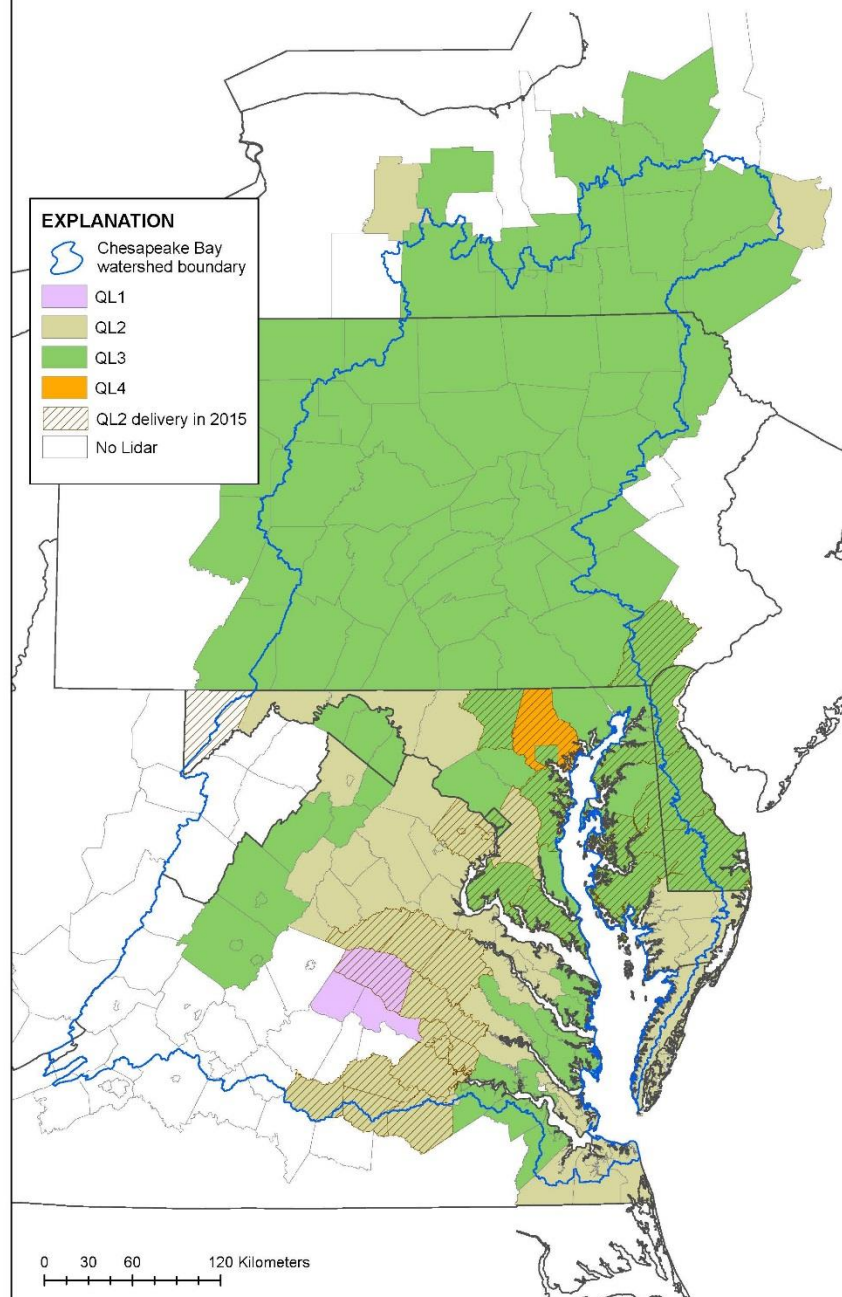


**Parcel Data Received to Date  
(August 2014)**





# Chesapeake Bay Watershed Lidar Data by County, January 2015





**Chesapeake Bay Program**  
*A Watershed Partnership*



# Phase 6 Land Use



**Peter Claggett, [pclaggett@usgs.gov](mailto:pclaggett@usgs.gov)**  
**Quentin Stubbs, [qstubbs@usgs.gov](mailto:qstubbs@usgs.gov)**

