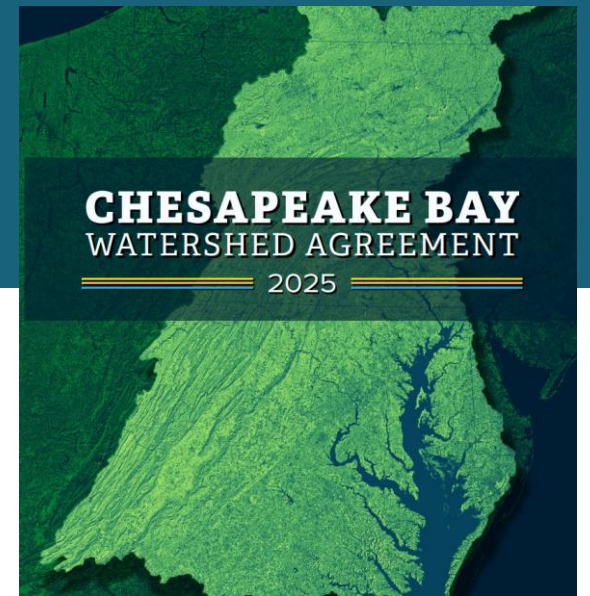


# Forest Conservation Target: Baseline Data

Cotton Randall and Katie Brownson, USFS

# New Healthy Forests and Trees Outcome

Conserve, manage and restore forests and tree cover to maximize benefits for water quality, habitat and people throughout the watershed, with a particular focus on riparian areas and communities.



## TARGETS

**Tree Canopy:** Conserve tree canopy within communities by reducing the rate of loss of existing canopy and planting and maintaining 45,000 acres of community trees by 2040 to achieve a net gain in canopy over the long term.

**Forest Buffers:** Conserve riparian forest by reducing the rate of loss of existing buffers and planting and maintaining 7,500 acres of forest buffers annually to achieve no less than 71.5% riparian forest cover by 2040 and 75% riparian forest cover over the long term.

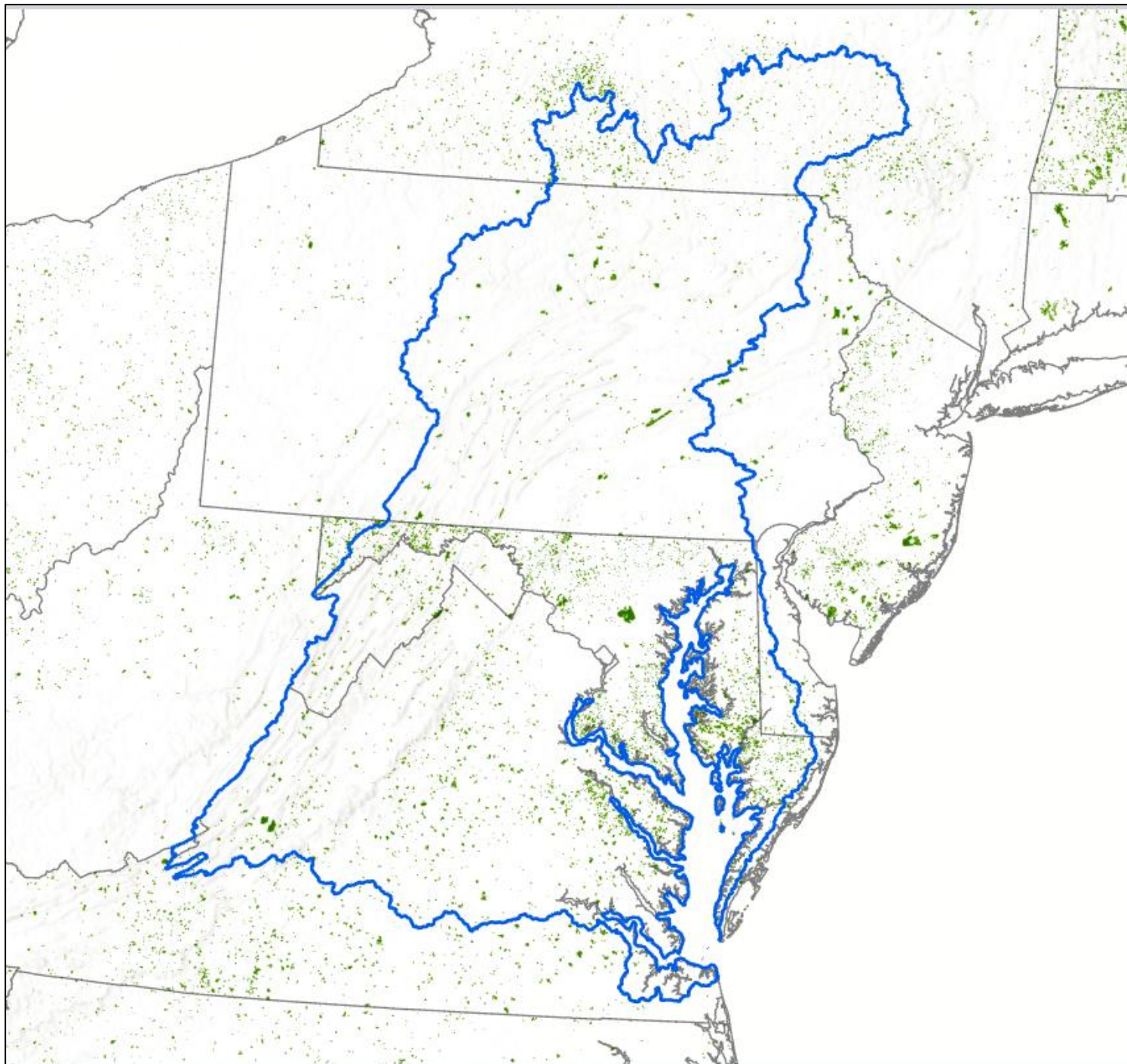
**Forest Conservation:** Achieve a net gain in forests over the long-term by reducing the rate of forest conversion to other land uses by 33%, permanently protecting a total of 9 million acres of forested land, and planting, maintaining and managing 202,000 acres of new forests by 2040.

# Forest conservation baseline data components

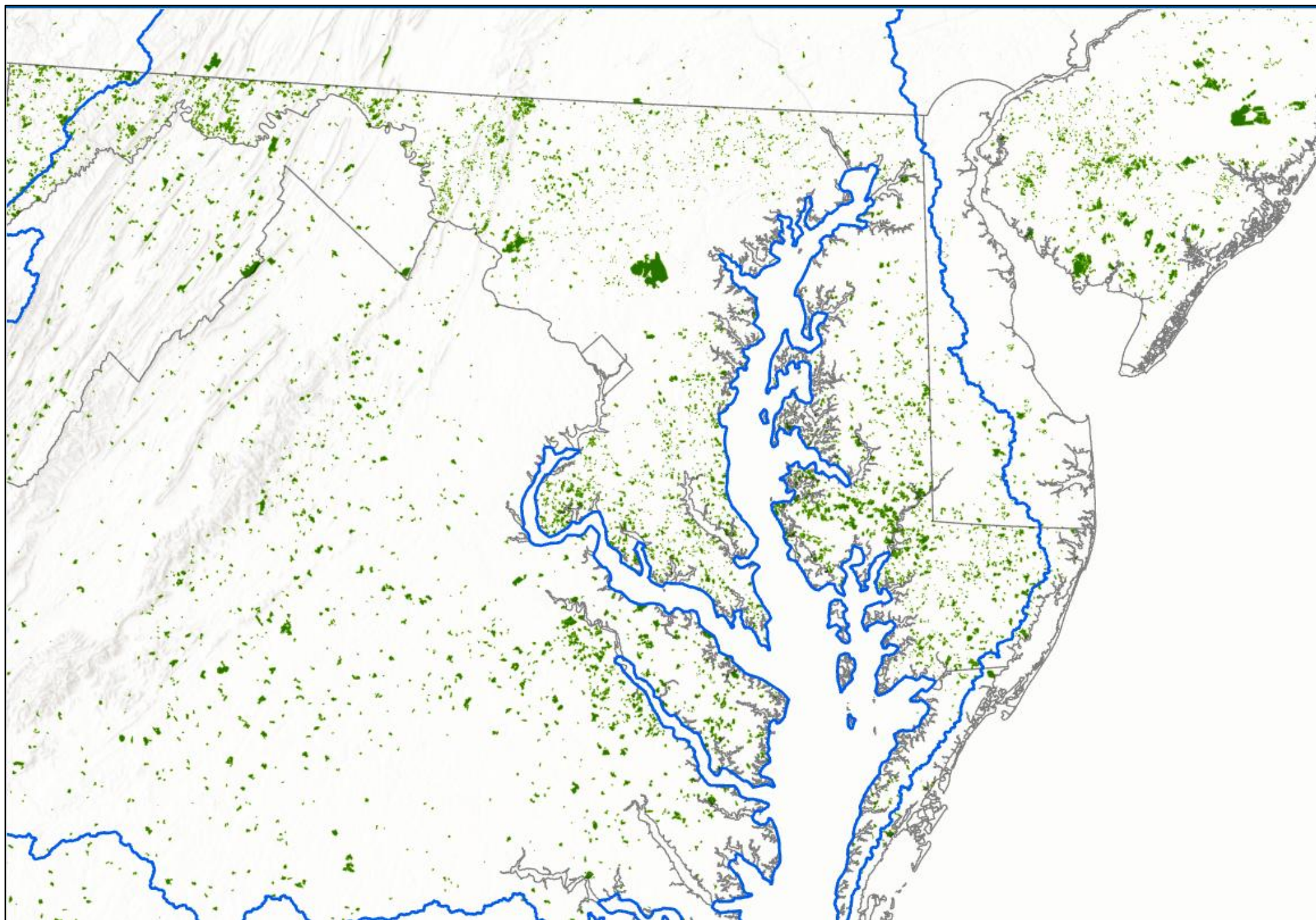
- Forest conversion to other land uses: CBP high-res land use data
- Permanent forest protection: CBP protected lands dataset
- Forest planting: CBP annual BMP progress data
- **Forest management/stewardship?**
  - **This is the focus for today!**

# Forest Stewardship Program Data

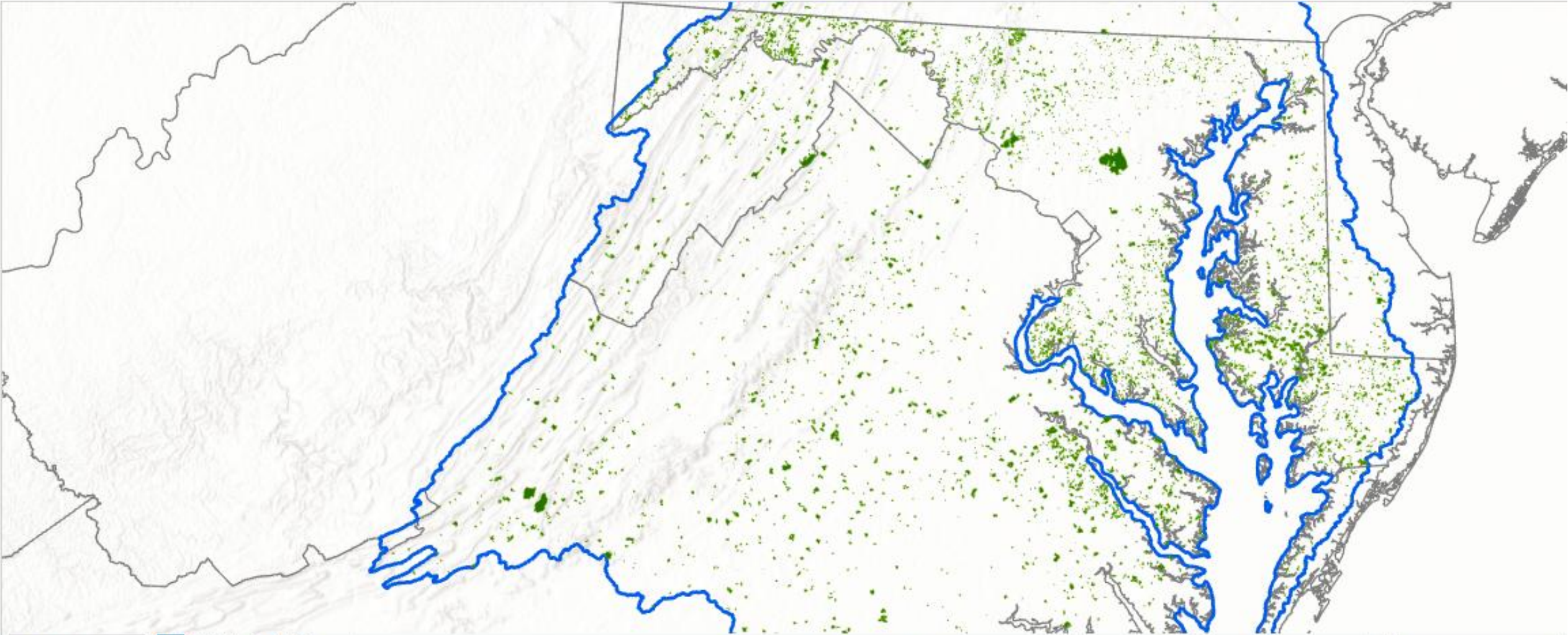
- Forest Stewardship Program captures all active forest stewardship plans spatially
- USFS can capture data and summarize it:
  - # of Active FSP management plans
  - Acres in Active FSP management plans
  - Acres in Active FSP plans being Managed Sustainably \*
    - \*As verified through annual plan monitoring
- Spatially, we can summarize the data by:
  - Full Chesapeake Bay Watershed
  - CB Watershed By State
  - Other??











1:2,322,202 | 185,553.98W 347,145.70S m | Selected Features: 0

FSP\_CB\_Intersect X

Field: Add Calculate Selection: Select By Attributes Zoom To Switch Clear Delete Copy

NAME	ACCOMPLISHMENT_STATUS	ACTIVE_DATE	PLAN_PERIOD	EXPIRE_DATE	REASON_INACTIVE	PERCENT_PRIORITY	STATE_ID	STATEABBR	STATENAME	GIS_ACRES
------	-----------------------	-------------	-------------	-------------	-----------------	------------------	----------	-----------	-----------	-----------

# Forest Stewardship Program Data

State	# of FSP Plans	Acres in FSP Plans	FSP Plan Implementation %	Acres of FSP Sustainably Managed
DE	93	10,819	84.41%	9,132
MD	8,534	798,423	85.78%	684,903
NY	505	70,624	65.50%	46,260
PA	414	107,645	39.34%	42,347
VA	1,519	285,208	81.24%	231,707
WV	276	69,567	83.49%	58,079
TOTAL	11,341	1,342,285	70.95%	952,364



# NRCS data on forest management practice implementation

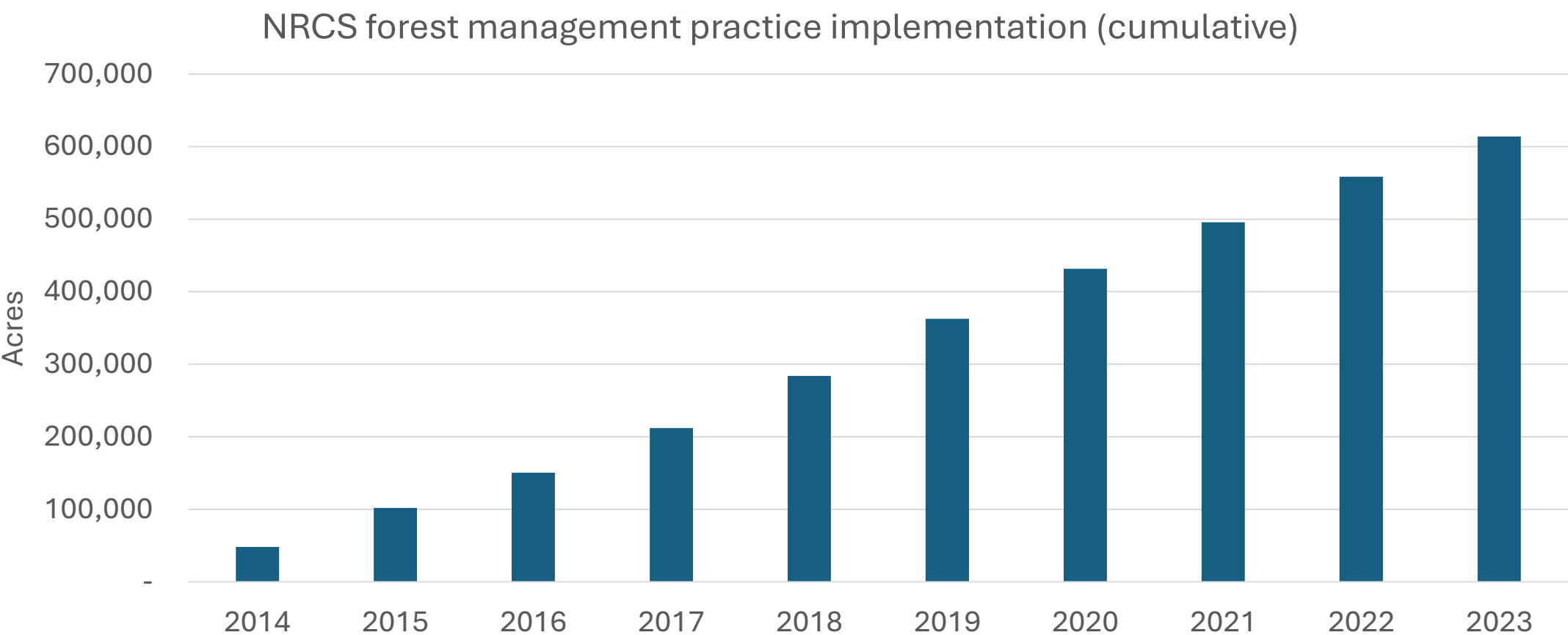
- Pulled from [RCA Data Viewer](#)
- Downloaded top conservation practices applied on the forest land use by state for 2014-2023
- Pro-rated the statewide totals based on the % of a state's forest within the watershed
- Includes data across all NRCS programs (EQIP, CSP, RCPP)

# NRCS focal practices

Focused on implementation practices commonly practiced across CBW states

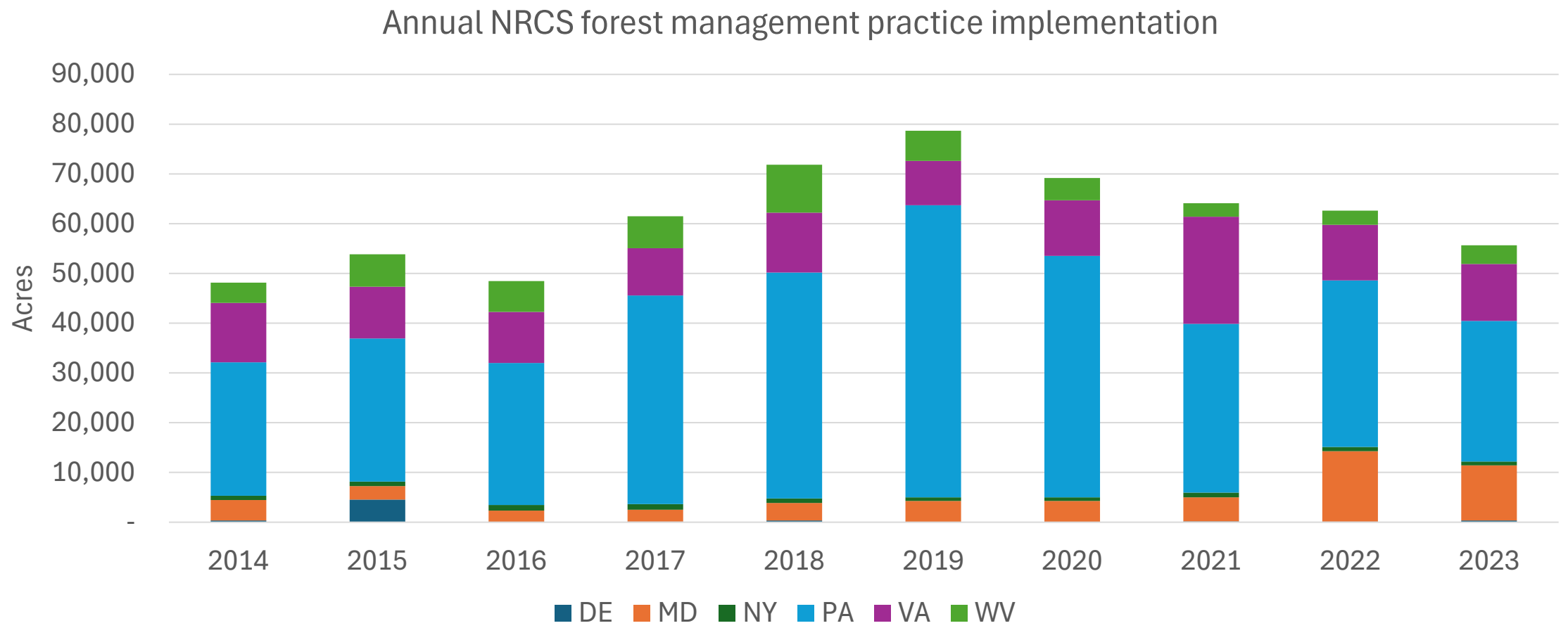
- 314- Brush management
- 315- Herbaceous weed treatment
- 645- Upland wildlife habitat management
- 647- Early successional habitat development-mgt
- 666- Forest stand improvement

# Total acres of management 2014-2023: 614,033 acres

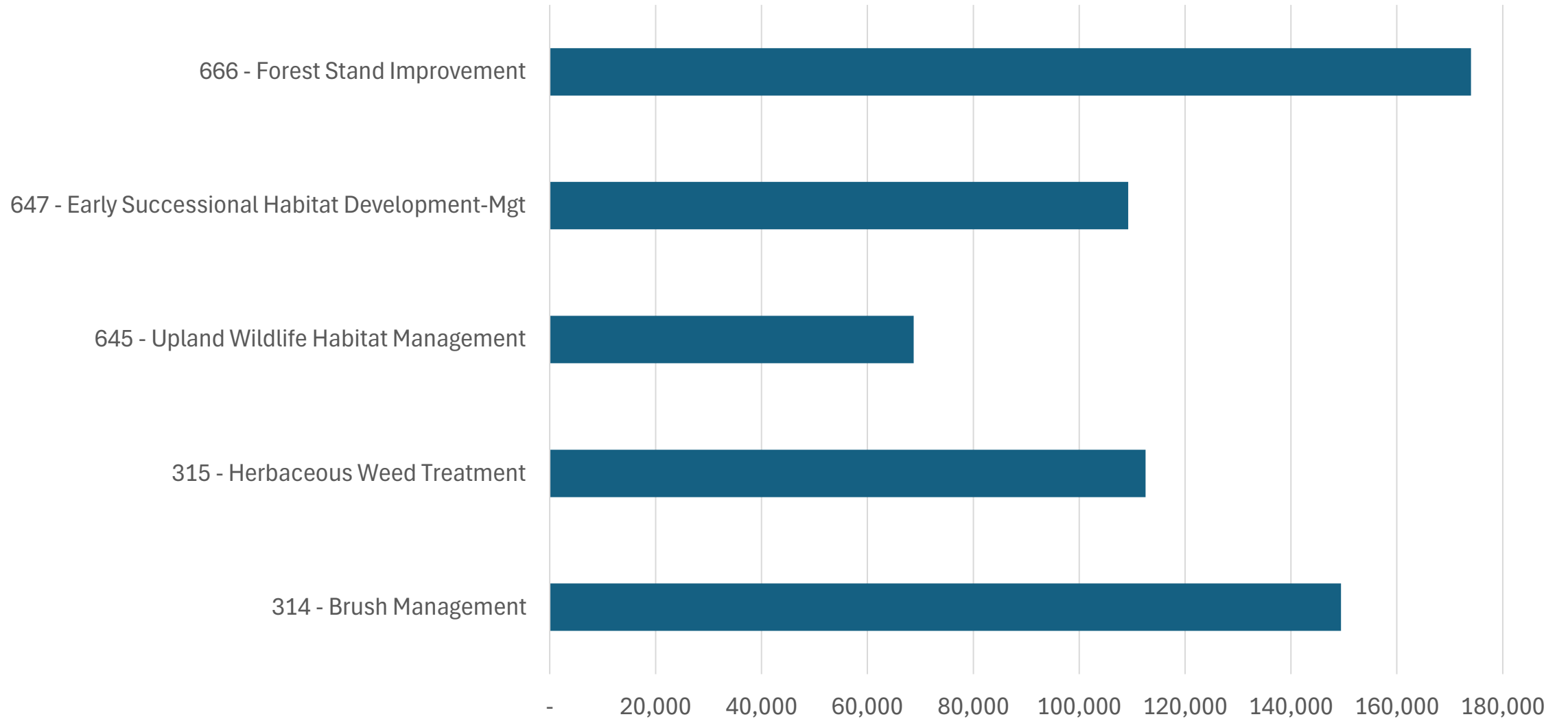




# Average annual implementation: 61,403 acres



### Total practice implementation 2014-2023



# Discussion questions

- Is this useful baseline data to include in the Management Strategy for forest conservation?
- Should we include both USFS FSP data and NRCS data as baseline data?
- Which FSP metrics are most relevant for setting a baseline?
- Should we look at all of these NRCS practices or focus in on a smaller subset of practices?
- Other input?