

Land Use/Land Cover (LULC): Comparison of 2022 and 2024 Editions

Sarah M. McDonald, Jackie A. Pickford, Peter R. Claggett

Comparison of 2017/18 Land Use/Land Cover
between the 2022 and 2024 editions of data

Land Use/Land Cover (LULC) Static 2017/18

Acres of difference between the 2022 edition and 2024 editions of 2017/18 LULC data for the portions of the jurisdictions within the watershed (43,958,570 acres).

	Development			Natural			Production		
State	Impervious	Pervious	Tree Cover	Forest	Successional	Wetlands	Crop	Pasture and Hay	Extractive
DC	254	(603)	(2,406)	2,396	388	(14)	-	(11)	-
DE	465	4,296	(5,656)	6,265	6,764	335	2,344	(13,196)	(41)
MD	22,881	40,153	(198,660)	197,765	123,309	(9,610)	55,159	(228,687)	(2,302)
NY	677	33,345	(39,488)	39,944	151,615	1,526	(3,297)	(187,738)	(0)
PA	20,432	167,165	(156,905)	165,546	209,497	533	(12,908)	(388,317)	(4,038)
VA	29,770	86,047	(254,287)	268,748	292,928	6,609	20,319	(428,597)	(976)
WV	(231)	29,392	(19,119)	14,637	33,087	163	5,973	(65,777)	(290)
Watershed	74,250	359,795	(676,522)	695,303	817,589	(457)	67,589	(1,312,323)	(7,647)

Impervious = ROAD, IMPS, IMPO
Pervious = TURF, PDEV
Tree Cover = TCIS, TCTG

Forest = FORE, FORO
Successional = HARF, NATS
Wetlands = TDLW, RIVW, TERW

Crop = CROP
Pasture and Hay = PAST
Extractive = EXTR

Land Use/Land Cover (LULC) Static 2017/18

Acres of difference between the 2022 edition and 2024 editions of 2017/18 LULC data for the portions of the jurisdictions within the watershed (43,958,570 acres).

	Development			Natural			Production		
State	Impervious	Pervious	Tree Cover	Forest	Successional	Wetlands	Crop	Pasture and Hay	Extractive
DC	254	(603)	(2,406)	2,396	388	(14)	-	(11)	-
DE	<ul style="list-style-type: none"> Some increase in impervious. Increase in pervious. Decrease in developed tree cover. 			<ul style="list-style-type: none"> Increase in forests. Increase in successional lands. Minimal change to wetlands. 			<ul style="list-style-type: none"> Increase in cropland. Decrease in pasture and hay Minimal change to extractive. 		
MD									
NY									
PA									
VA	29,770	86,047	(254,287)				20,319	(428,597)	(976)
WV	(231)	29,392	(19,119)	14,637	33,087	163	5,973	(65,777)	(290)
Watershed	74,250	359,795	(676,522)	695,303	817,589	(457)	67,589	(1,312,323)	(7,647)

Impervious = ROAD, IMPS, IMPO
Pervious = TURF, PDEV
Tree Cover = TCIS, TCTG

Forest = FORE, FORO
Successional = HARF, NATS
Wetlands = TDLW, RIVW, TERW

Crop = CROP
Pasture and Hay = PAST
Extractive = EXTR

Land Use/Land Cover (LULC) Static 2017/18

Pivot table showing acres of differences between 2022 edition (rows) and 2024 edition (columns) for the entire 205-county region.

2017/18 LULC		Development			Natural			Production			Decrease
		Impervious	Pervious	Tree Cover	Forest	Successional	Wetlands	Crop	Pasture and Hay	Extractive	
Development	Impervious	-	22,737	1,140	1,297	6,111	380	3,565	3,102	8,297	46,628
	Pervious	104,052	-	1,084	4,602	432,874	13,925	75,005	120,796	173	752,513
	Tree Cover	1,183	1,459	-	957,544	483	29	44	88	3	960,833
Natural	Forest	441	6,887	46,174	-	43,211	10,186	1,839	3,878	398	113,014
	Successional	7,178	315,099	73	37,018	-	28,937	38,514	99,078	1,813	527,710
	Wetlands	1,256	14,963	5	4,229	21,063	-	17,311	5,269	26	64,122
Production	Crop	10,859	229,391	27	2,947	234,987	4,668	-	393,760	16	876,655
	Pasture and Hay	12,188	712,203	75	7,316	925,415	8,434	827,347	-	10	2,492,989
	Extractive	102	10,266	0	189	10,913	203	178	156	-	22,006
Increase		137,260	1,313,004	48,577	1,015,143	1,675,058	66,761	963,803	626,127	10,737	5,856,471
Decrease		46,628	752,513	960,833	113,014	527,710	64,122	876,655	2,492,989	22,006	
Net Difference		90,631	560,491	(912,256)	902,129	1,147,348	2,639	87,148	(1,866,861)	(11,268)	

Impervious = ROAD, IMPS, IMPO
Pervious = TURF, PDEV
Tree Cover = TCIS, TCTG

Forest = FORE, FORO
Successional = HARF, NATS
Wetlands = TDLW, RIVW, TERW

Crop = CROP
Pasture and Hay = PAST
Extractive = EXTR

Land Use/Land Cover (LULC) Static 2017/18

Pivot table showing acres of differences between 2022 edition (rows) and 2024 edition (columns) for the entire 205-county region.

2017/18 LULC		Development			Natural			Production			Decrease
		Impervious	Pervious	Tree Cover	Forest	Successional	Wetlands	Crop	Pasture and Hay	Extractive	
Development	Impervious	-	22,737	1,140	1,297	6,111	380	3,565	3,102	8,297	46,628
	Pervious	104,052	-	1,084	4,602	432				173	752,513
	Tree Cover	1,183	1,459	957,544						3	960,833
Natural	Forest	441	6,887	46,174	-	43				398	113,014
	Successional	7,178	315,099	73	37,018					1,813	527,710
	Wetlands	1,256	14,963	5	4,229	21				26	64,122
Production	Crop	10,859	229,391	27	2,947	234				16	876,655
	Pasture and Hay	12,188	712,203	75	7,316	925,415	8,434	827,347	-	10	2,492,989
	Extractive	102	10,266	0	189	10,913	203	178	156	-	22,006
Increase		137,260	1,313,004	48,577	1,015,143	1,675,058	66,761	963,803	626,127	10,737	5,856,471
Decrease		46,628	752,513	960,833	113,014	527,710	64,122	876,655	2,492,989	22,006	
Net Difference		90,631	560,491	(912,256)	902,129	1,147,348	2,639	87,148	(1,866,861)	(11,268)	

There are 957,544 acres of Developed Tree Cover in the 2022 edition that is mapped as forest in the 2024 edition.

Impervious = ROAD, IMPS, IMPO
Pervious = TURF, PDEV
Tree Cover = TCIS, TCTG

Forest = FORE, FORO
Successional = HARF, NATS
Wetlands = TDLW, RIVW, TERW

Crop = CROP
Pasture and Hay = PAST
Extractive = EXTR

Land Use/Land Cover (LULC) Static 2017/18

Pivot table showing acres of differences between 2022 edition (rows) and 2024 edition (columns) for the entire 205-county region.

2017/18 LULC		Development			Natural			Production			Decrease
		Impervious	Pervious	Tree Cover	Forest	Successional	Wetlands	Crop	Pasture and Hay	Extractive	
Development	Impervious	-	22,737	1,140	1,297	6,111	380	3,565	3,102	8,297	46,628
	Pervious	104,052	-	1,084	4,602	432,874	13,925	75,005	120,796	173	752,513
	Tree Cover	1,183	1,459	Impervious <ul style="list-style-type: none"> Net 90,631 acres more mapped in 2024 ed. Primarily mapped as pervious development in 2022 ed. 			29	44	88	3	960,833
Natural	Forest	441	6,887				10,186	1,839	3,878	398	113,014
	Successional	7,178	315,099				28,937	38,514	99,078	1,813	527,710
	Wetlands	1,256	14,963				-	17,311	5,269	26	64,122
Production	Crop	10,859	229,391				4,668	-	393,760	16	876,655
	Pasture and Hay	12,188	712,203				8,434	827,347	-	10	2,492,989
	Extractive	102	10,266				203	178	156	-	22,006
Increase		137,260	1,313,004	48,577	1,015,143	1,675,058	66,761	963,803	626,127	10,737	5,856,471
Decrease		46,628	752,513	960,833	113,014	527,710	64,122	876,655	2,492,989	22,006	
Net Difference		90,631	560,491	(912,256)	902,129	1,147,348	2,639	87,148	(1,866,861)	(11,268)	

Impervious = ROAD, IMPS, IMPO
Pervious = TURF, PDEV
Tree Cover = TCIS, TCTG

Forest = FORE, FORO
Successional = HARF, NATS
Wetlands = TDLW, RIVW, TERW

Crop = CROP
Pasture and Hay = PAST
Extractive = EXTR

Land Use/Land Cover (LULC) Static 2017/18

Pivot table showing acres of differences between 2022 edition (rows) and 2024 edition (columns) for the entire 205-county region.

2017/18 LULC		Development			Natural			Production			Decrease
		Impervious	Pervious	Tree Cover	Forest	Successional	Wetlands	Crop	Pasture and Hay	Extractive	
Development	Impervious	-	22,737	1,140	1,297	6,111	380	3,565	3,102	8,297	46,628
	Pervious	104,052	-	1,084	4,602	432,874	13,925	75,005	120,796	173	752,513
	Tree Cover	1,183	1,459	-	957,544	483	29	44	88	3	960,833
Natural	Forest	441	6,887	46,177	Pervious Development <ul style="list-style-type: none"> Net 560,491 acres more mapped in 2024 ed. Primarily mapped as agriculture in 2022 ed. 			1,839	3,878	398	113,014
	Successional	7,178	315,099	7				38,514	99,078	1,813	527,710
	Wetlands	1,256	14,963	7				17,311	5,269	26	64,122
Production	Crop	10,859	229,391	2				-	393,760	16	876,655
	Pasture and Hay	12,188	712,203	7				827,347	-	10	2,492,989
	Extractive	102	10,266	7				178	156	-	22,006
Increase		137,260	1,313,004	48,577				963,803	626,127	10,737	5,856,471
Decrease		46,628	752,513	960,833	113,014	527,710	64,122	876,655	2,492,989	22,006	
Net Difference		90,631	560,491	(912,256)	902,129	1,147,348	2,639	87,148	(1,866,861)	(11,268)	

Impervious = ROAD, IMPS, IMPO
Pervious = TURF, PDEV
Tree Cover = TCIS, TCTG

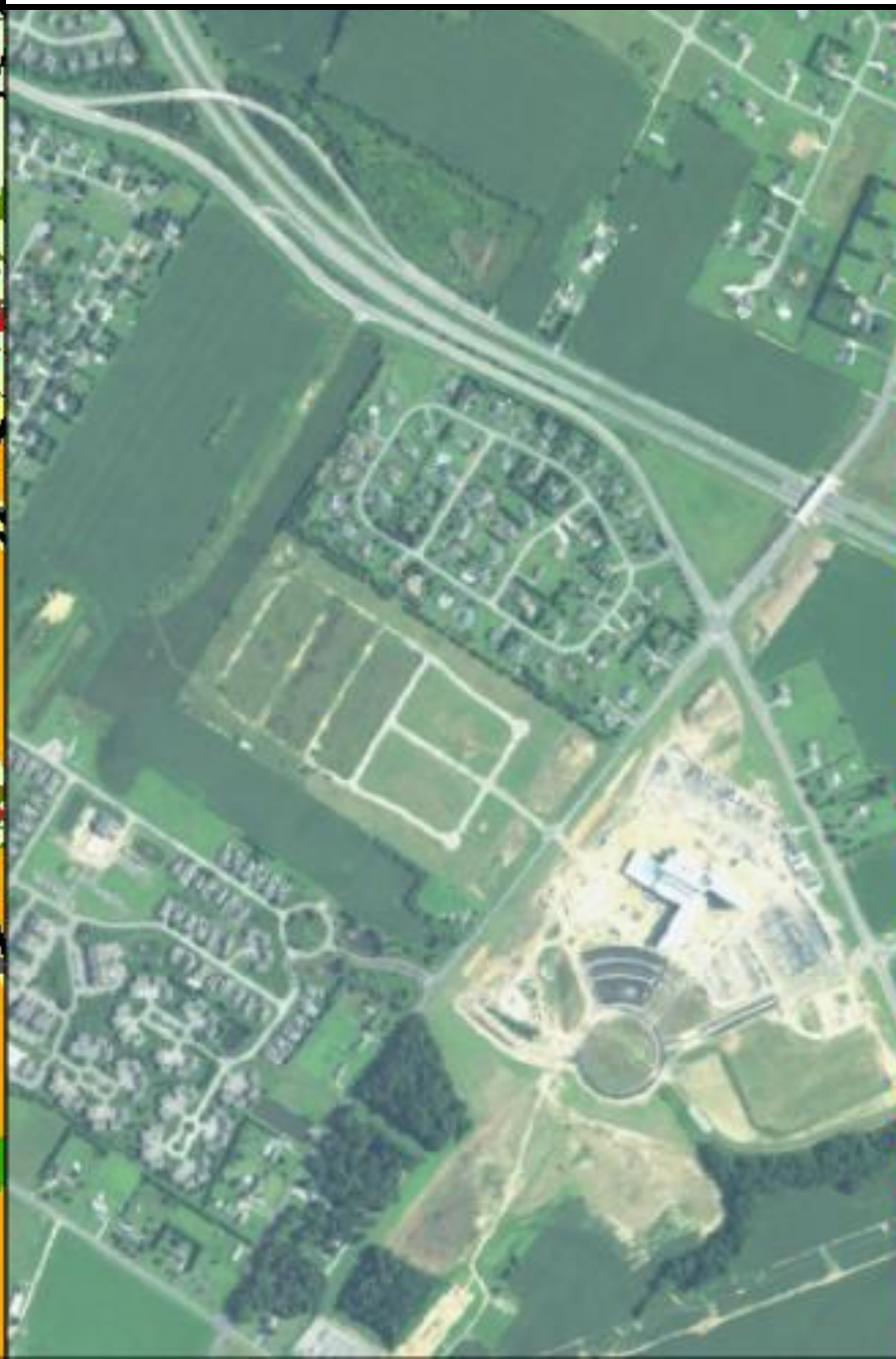
Forest = FORE, FORO
Successional = HARF, NATS
Wetlands = TDLW, RIVW, TERW

Crop = CROP
Pasture and Hay = PAST
Extractive = EXTR

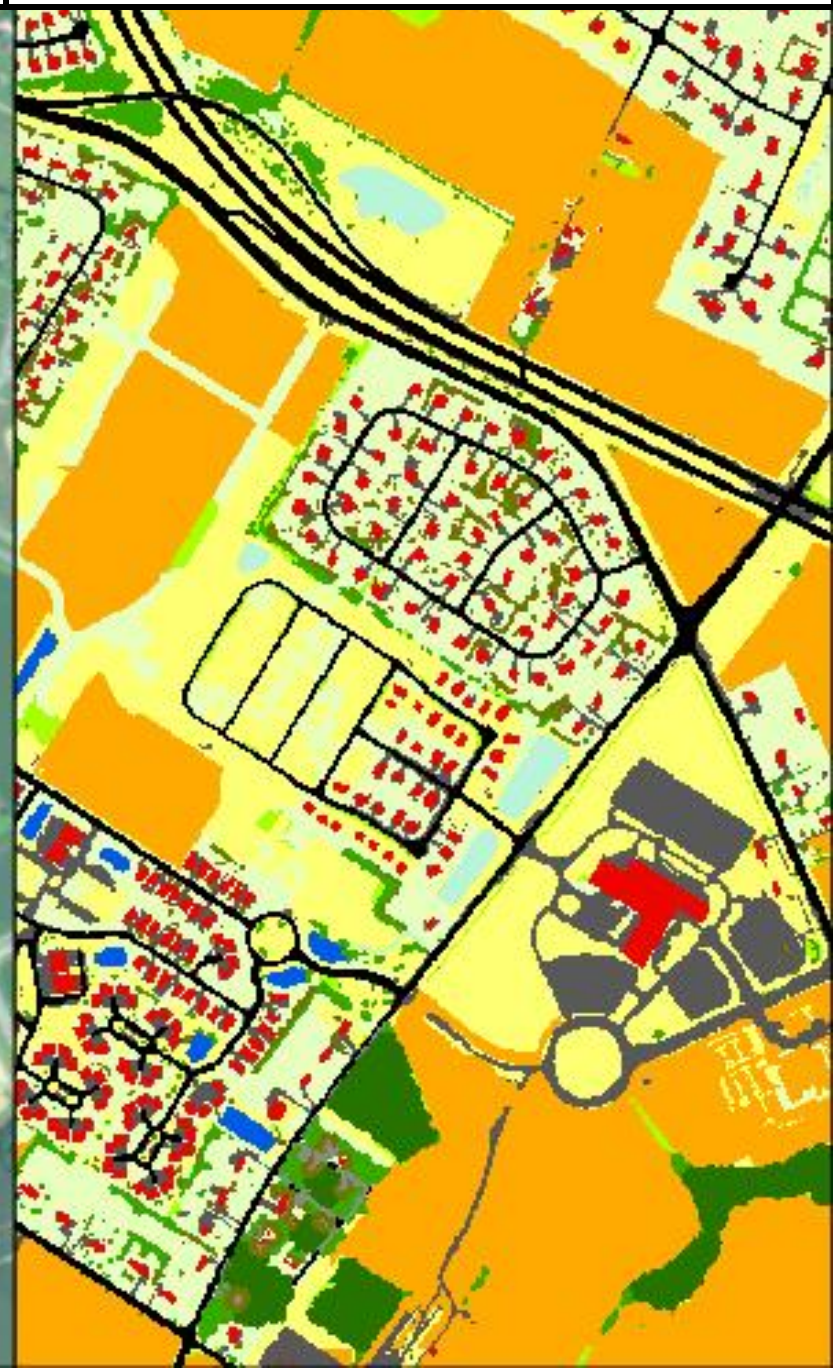
2022 Edition



2018 NAIP Imagery



2024 Edition



Land Use/Land Cover (LULC) Static 2017/18

Pivot table showing acres of differences between 2022 edition (rows) and 2024 edition (columns) for the entire 205-county region.

2017/18 LULC		Development			Natural			Production			Decrease
		Impervious	Pervious	Tree Cover	Forest	Successional	Wetlands	Crop	Pasture and Hay	Extractive	
Development	Impervious	-	22,737	1,140	1,297	6,111	380	3,565	3,102	8,297	46,628
	Pervious	104,052	-	1,084	4,602	432,874	13,925	75,005	120,796	173	752,513
	Tree Cover	1,183	1,459	-	957,544	483	29	44	88	3	960,833
Natural	Forest	441	6,887	46,174	-				3,878	398	113,014
	Successional	7,178	315,099	73	37,018				9,078	1,813	527,710
	Wetlands	1,256	14,963	5	4,229				5,269	26	64,122
Production	Crop	10,859	229,391	27	2,947				3,760	16	876,655
	Pasture and Hay	12,188	712,203	75	7,316				-	10	2,492,989
	Extractive	102	10,266	0	189				156	-	22,006
Increase		137,260	1,313,004	48,577	1,015,143				6,127	10,737	5,856,471
Decrease		46,628	752,513	960,833	113,014	527,710	64,122	876,655	2,492,989	22,006	
Net Difference		90,631	560,491	(912,256)	902,129	1,147,348	2,639	87,148	(1,866,861)	(11,268)	

Developed Tree Cover

- Net 912,256 acres less mapped in 2024 ed.
- Primarily mapped as forest in 2024 ed.

Impervious = ROAD, IMPS, IMPO
Pervious = TURF, PDEV
Tree Cover = TCIS, TCTG

Forest = FORE, FORO
Successional = HARF, NATS
Wetlands = TDLW, RIVW, TERW

Crop = CROP
Pasture and Hay = PAST
Extractive = EXTR

2022 Edition



2018 NAIP Imagery



2024 Edition



Land Use/Land Cover (LULC) Static 2017/18

Pivot table showing acres of differences between 2022 edition (rows) and 2024 edition (columns) for the entire 205-county region.

2017/18 LULC		Development			Natural			Production			Decrease
		Impervious	Pervious	Tree Cover	Forest	Successional	Wetlands	Crop	Pasture and Hay	Extractive	
Development	Impervious				1,297	6,111	380	3,565	3,102	8,297	46,628
	Pervious	<div>Successional lands</div> <ul style="list-style-type: none">Net 1,147,348 acres more mapped in 2024 ed.Primarily mapped as pasture, pervious developed, and cropland in 2024 ed.			4,602	432,874	13,925	75,005	120,796	173	752,513
	Tree Cover				57,544	483	29	44	88	3	960,833
Natural	Forest				-	43,211	10,186	1,839	3,878	398	113,014
	Successional				37,018	-	28,937	38,514	99,078	1,813	527,710
	Wetlands				4,229	21,063	-	17,311	5,269	26	64,122
Production	Crop				2,947	234,987	4,668	-	393,760	16	876,655
	Pasture and Hay				7,316	925,415	8,434	827,347	-	10	2,492,989
	Extractive				189	10,913	203	178	156	-	22,006
Increase					137,260	1,313,004	48,577	1,015,143	1,675,058	66,761	963,803
Decrease		46,628	752,513	960,833	113,014	527,710	64,122	876,655	2,492,989	22,006	
Net Difference		90,631	560,491	(912,256)	902,129	1,147,348	2,639	87,148	(1,866,861)	(11,268)	

Successional lands

- Net 1,147,348 acres more mapped in 2024 ed.
- Primarily mapped as pasture, pervious developed, and cropland in 2024 ed.

Impervious = ROAD, IMPS, IMPO
Pervious = TURF, PDEV
Tree Cover = TCIS, TCTG

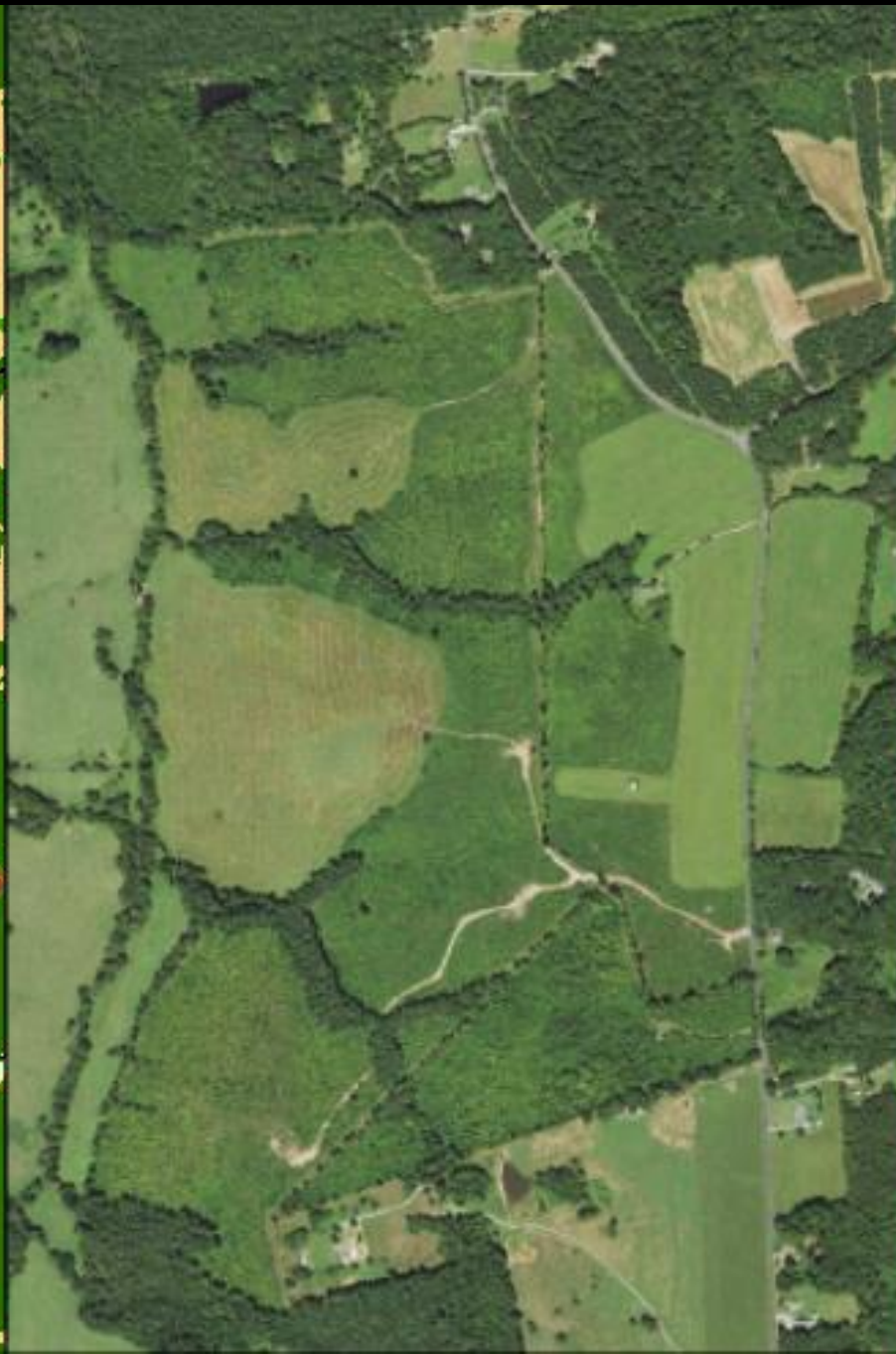
Forest = FORE, FORO
Successional = HARF, NATS
Wetlands = TDLW, RIVW, TERW

Crop = CROP
Pasture and Hay = PAST
Extractive = EXTR

2022 Edition



2018 NAIP Imagery



2024 Edition



Land Use/Land Cover (LULC) Static 2017/18

Pivot table showing acres of differences between 2022 edition (rows) and 2024 edition (columns) for the entire 205-county region.

2017/18 LULC		Development			Natural			Production			Decrease
		Impervious	Pervious	Tree Cover	Forest	Successional	Wetlands	Crop	Pasture and Hay	Extractive	
Development	Impervious	Cropland <ul style="list-style-type: none"> Net 87,148 acres more mapped in 2024 ed. 827,347 acres of pasture in 2022 ed. mapped as cropland in 2024 ed. Acres of cropland in 2022 ed. mapped as pervious developed, successional, and pasture. 									8,628
	Pervious										2,513
	Tree Cover										0,833
Natural	Forest										8,014
	Successional										7,710
	Wetlands										1,122
Production	Crop	10,859	229,391	27	2,947	234,987	4,668	-	393,760	16	876,655
	Pasture and Hay	12,188	712,203	75	7,316	925,415	8,434	827,347	-	10	2,492,989
	Extractive	102	10,266	0	189	10,913	203	178	156	-	22,006
Increase		137,260	1,313,004	48,577	1,015,143	1,675,058	66,761	963,803	626,127	10,737	5,856,471
Decrease		46,628	752,513	960,833	113,014	527,710	64,122	876,655	2,492,989	22,006	
Net Difference		90,631	560,491	(912,256)	902,129	1,147,348	2,639	87,148	(1,866,861)	(11,268)	

Impervious = ROAD, IMPS, IMPO
Pervious = TURF, PDEV
Tree Cover = TCIS, TCTG

Forest = FORE, FORO
Successional = HARF, NATS
Wetlands = TDLW, RIVW, TERW

Crop = CROP
Pasture and Hay = PAST
Extractive = EXTR

2022 Edition



2018 NAIP Imagery



2024 Edition



Land Use/Land Cover (LULC) Static 2017/18

Pivot table showing acres of differences between 2022 edition (rows) and 2024 edition (columns) for the entire 205-county region.

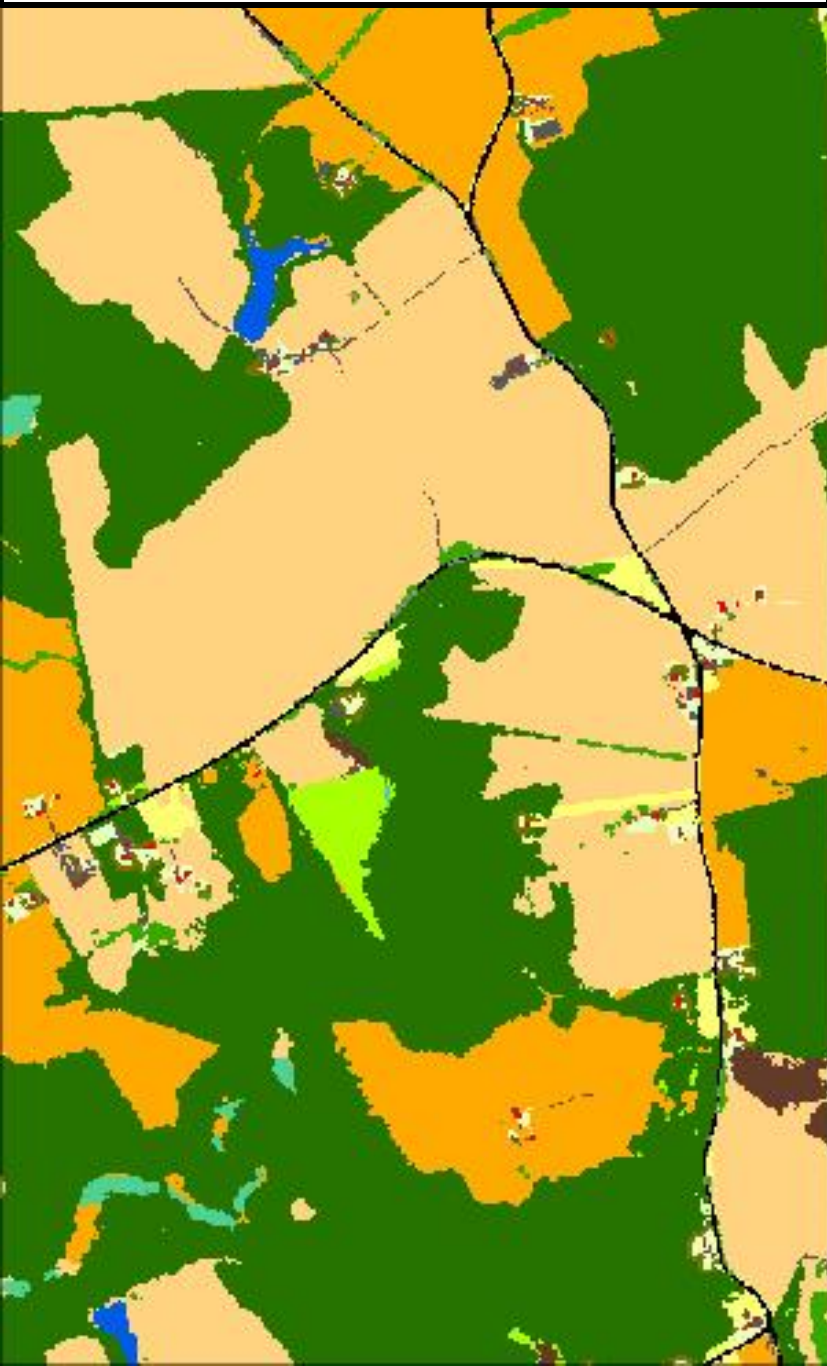
2017/18 LULC		Development			Natural			Production			Decrease
Development	Impervious	Pasture and Hay <ul style="list-style-type: none">Net 1,1866,861 acres less mapped in 2024 ed.Acres of pasture in 2022 ed. mapped as successional, cropland, and pervious developed in 2024 ed.Acres of cropland and pervious developed in 2022 ed. mapped as pasture in 2024 ed.									46,628
	Pervious										752,513
	Tree Cover										960,833
Natural	Forest										113,014
	Successional										527,710
	Wetlands										64,122
Production	Crop	10,859	229,391	27	2,947	234,987	4,668	-	393,760	16	876,655
	Pasture and Hay	12,188	712,203	75	7,316	925,415	8,434	827,347	-	10	2,492,989
	Extractive	102	10,266	0	189	10,913	203	178	156	-	22,006
Increase		137,260	1,313,004	48,577	1,015,143	1,675,058	66,761	963,803	626,127	10,737	5,856,471
Decrease		46,628	752,513	960,833	113,014	527,710	64,122	876,655	2,492,989	22,006	
Net Difference		90,631	560,491	(912,256)	902,129	1,147,348	2,639	87,148	(1,866,861)	(11,268)	

Impervious = ROAD, IMPS, IMPO
Pervious = TURF, PDEV
Tree Cover = TCIS, TCTG

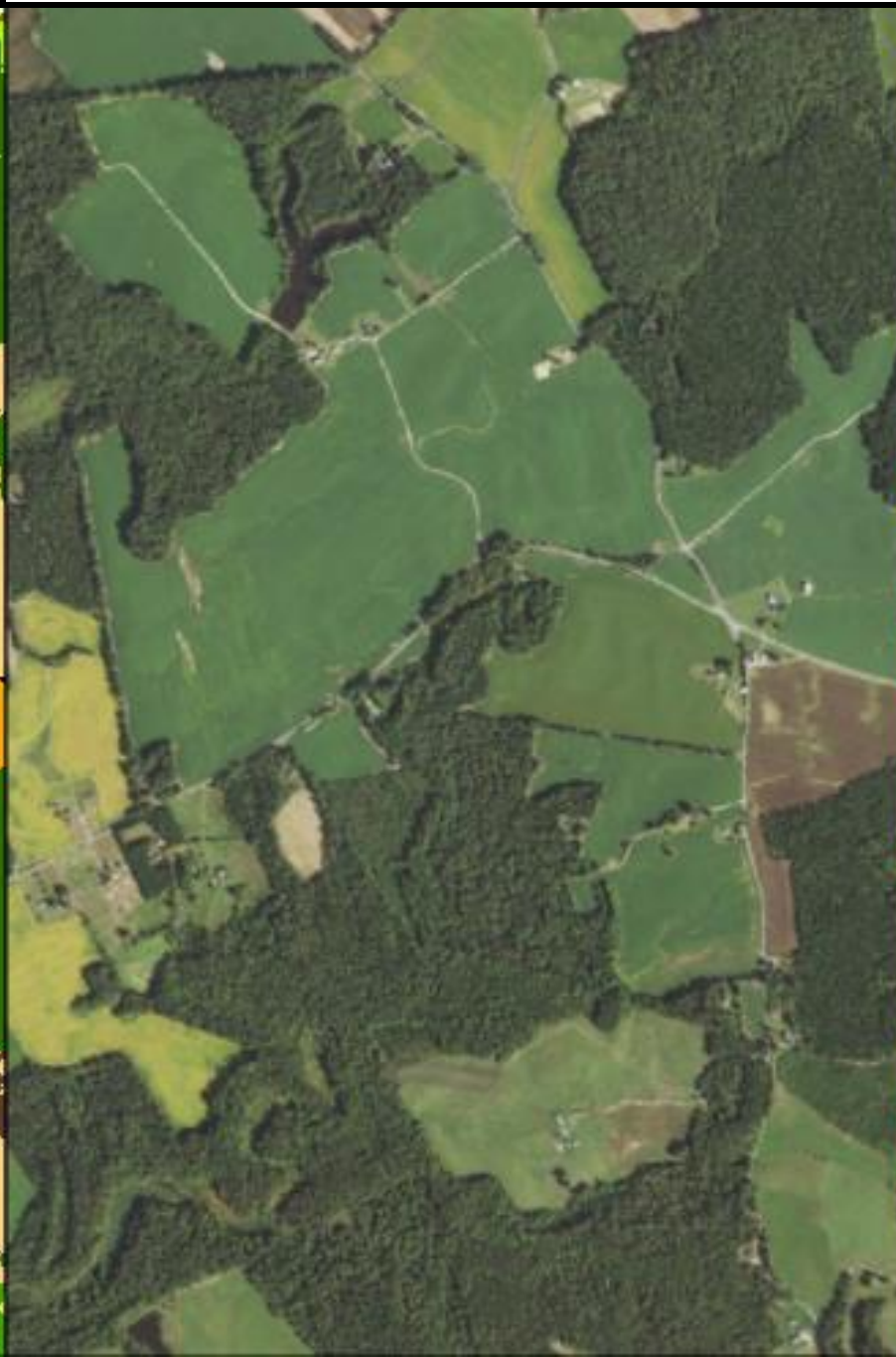
Forest = FORE, FORO
Successional = HARF, NATS
Wetlands = TDLW, RIVW, TERW

Crop = CROP
Pasture and Hay = PAST
Extractive = EXTR

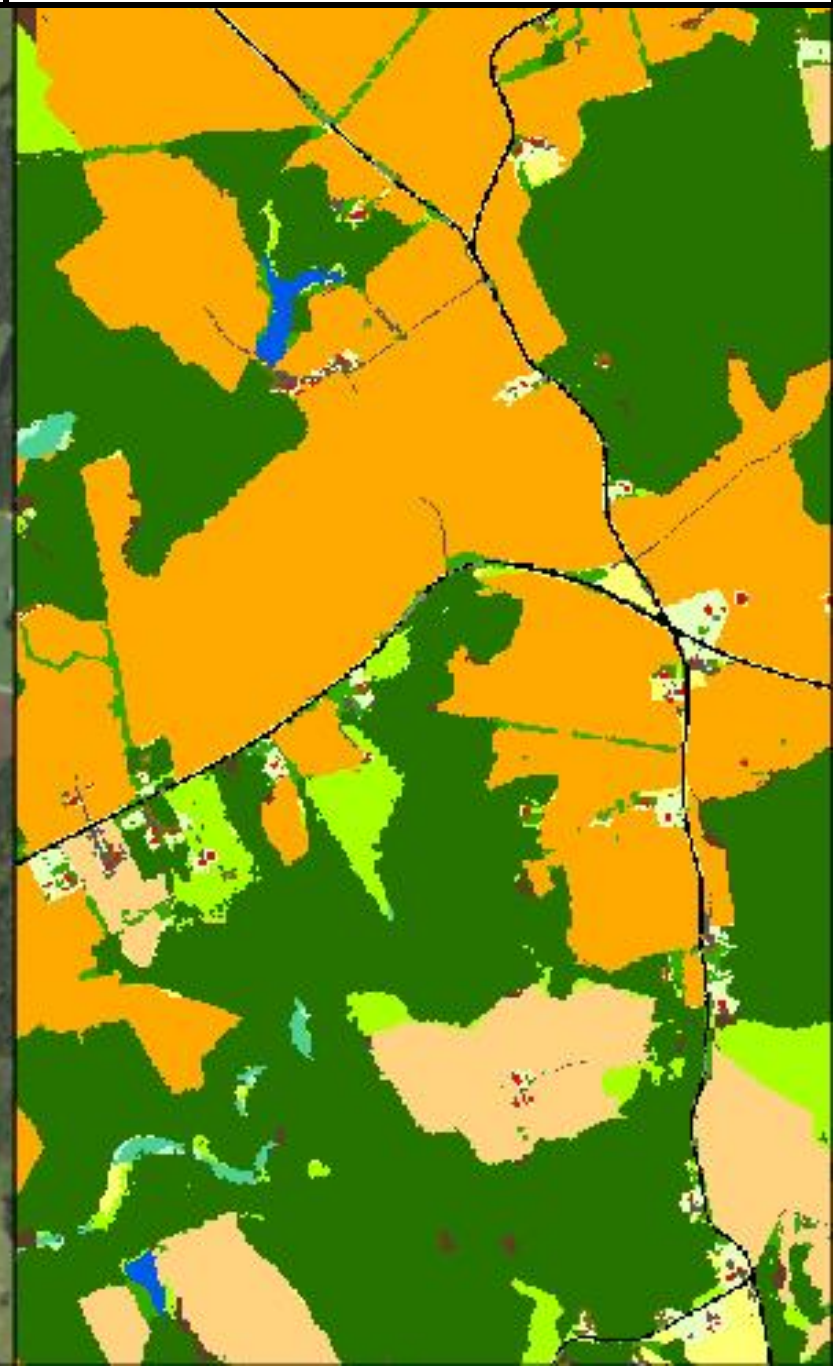
2022 Edition



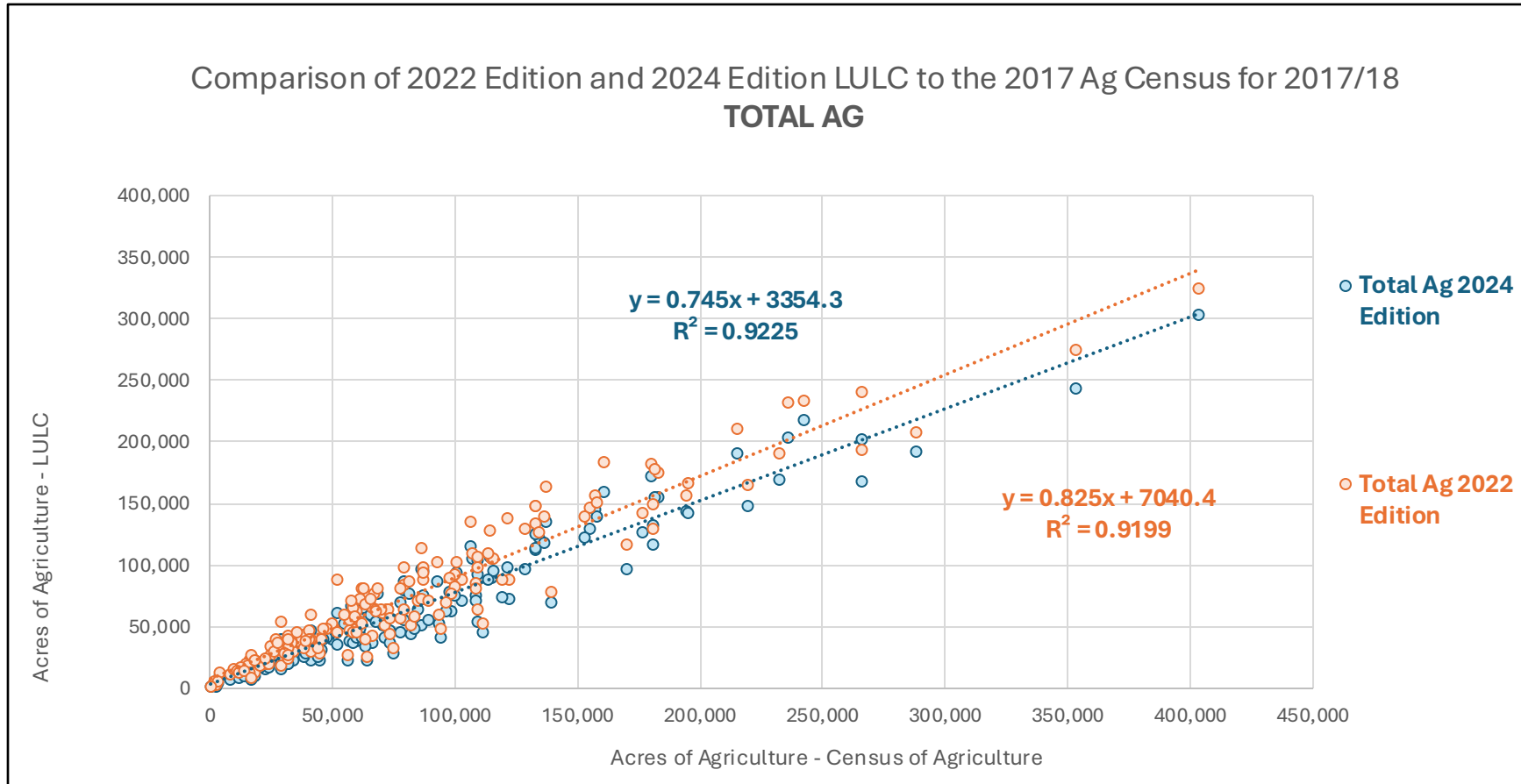
2018 NAIP Imagery



2024 Edition

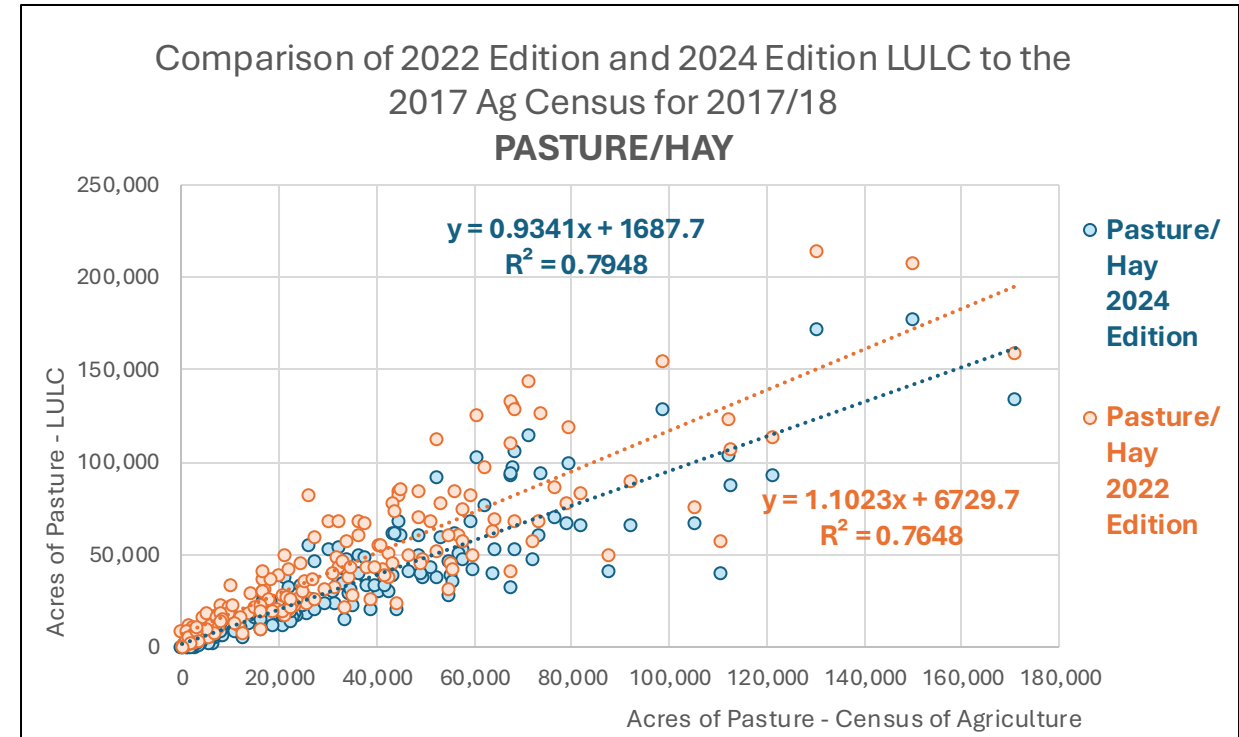
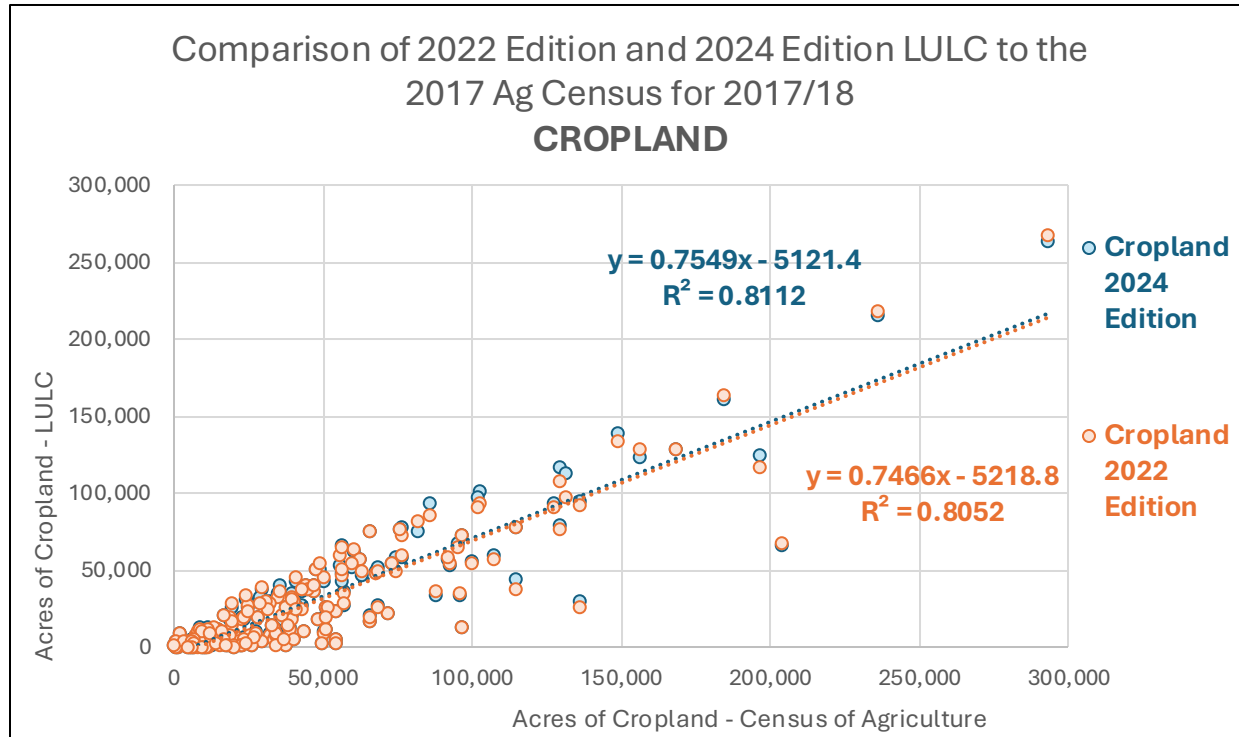


How do LULC data Compare to the Census of Agriculture?



The 2024 edition of LULC (blue) better aligns with the census of agriculture than the 2022 edition (orange) at the county scale for total agriculture (cropland and pasture), increasing the r-squared from 0.9199 to 0.9225.

How do LULC data Compare to the Census of Agriculture?



The 2024 edition of LULC (blue) better aligns with the census of agriculture than the 2022 edition (orange) at the county scale for both cropland (0.8 to 0.81 r-squared) and pasture (0.76 to 0.79 r-squared).

Comparison of 2013/14 - 2017/18 Land Use/Land
Cover Change Trends between the 2022 and 2024
editions of data

Land Use/Land Cover (LULC) Change 2013/14 to 2017/18

Acres of difference between the 2022 edition and 2024 editions of 2013/14 to 2017/18 LULC change data for the portions of the jurisdictions within the watershed.

2013/14-2017/18		Developed			Natural			Production			Decrease
		Impervious	Pervious	Tree Cover	Forest	Successional	Wetlands	Cropland	Pasture	Extractive	
Developed	Impervious	-	(755)	(1,345)	48	926	(12)	(213)	(663)	7	(2,007)
	Pervious	5,014	-	(4,228)	4,745	29,326	71	560	854	(1,621)	34,722
	Tree Cover	738	(7,922)	-	2,047	775	(2)	(215)	(565)	(6)	(5,149)
Natural	Forest	1,632	(18,772)	(14,608)	-	49,336	2,187	(18,014)	(22,088)	(3,577)	(23,904)
	Successional	7,917	13,202	331	28,131	-	2,152	475	359	1,009	53,576
	Wetlands	(88)	(76)	(2)	537	(226)	-	(16)	(5)	(27)	97
Production	Cropland	(6,220)	(11,159)	(148)	(13,142)	14,174	-	-	(85)	(677)	(17,258)
	Pasture	(7,785)	(9,206)	1	(18,998)	43,752	-	(84)	-	(1,031)	6,650
	Extractive	5	2,812	1	12	1,352	5	11	13	-	4,212
Increase		1,214	(31,874)	(19,997)	3,379	139,415	4,401	(17,495)	(22,179)	(5,923)	50,942

Land Use/Land Cover (LULC) Change 2013/14 to 2017/18

Acres of difference between the 2022 edition and 2024 editions of 2013/14 to 2017/18 LULC change data for the portions of the jurisdictions within the watershed.

2013/14-2017/18		Developed			Natural			Production			Decrease
		Impervious	Pervious	Tree Cover	Forest	Successional	Wetlands	Cropland	Pasture	Extractive	
Developed	Impervious	-	(755)	(1,345)	48	926	(12)	(213)	(663)	7	(2,007)
	Pervious	5,014	-	(4,228)	4,745	29,326	71	560	854	(1,621)	34,722
	Tree Cover	738	(7,922)	-	2,047	775	(2)	(215)	(565)	(6)	(5,149)
Natural	Forest	1,632	(18,772)	(14,608)	-	49,336	2,187	(18,014)	(22,088)	(3,577)	(23,904)
	Successional	7,917	13,202	331	28,131	-	2,152	475	359	1,009	53,576
	Wetlands	(88)	(76)	(2)	537	(2)					97
Production	Cropland	(6,220)	(11,159)	(148)	(13,142)	14,1					(17,258)
	Pasture	(7,785)	(9,206)	1	(18,998)	43,7					6,650
	Extractive	5	2,812	1	12	1,3					4,212
Increase		1,214	(31,874)	(19,997)	3,379	139,4					50,942

Improved Harvest Mapping

- Reduction in Forest conversion to agriculture (40,102).
- Reduction of agriculture conversion to forests (32,140 acres).

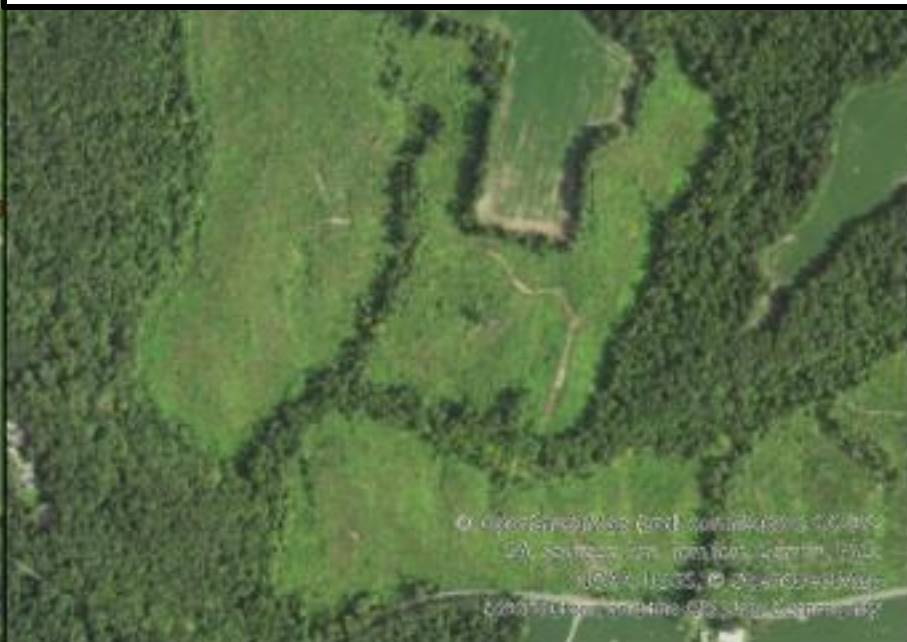
LULC Change 2022 Edition



2014 NAIP Imagery



2018 NAIP Imagery



LULC Change 2024 Edition



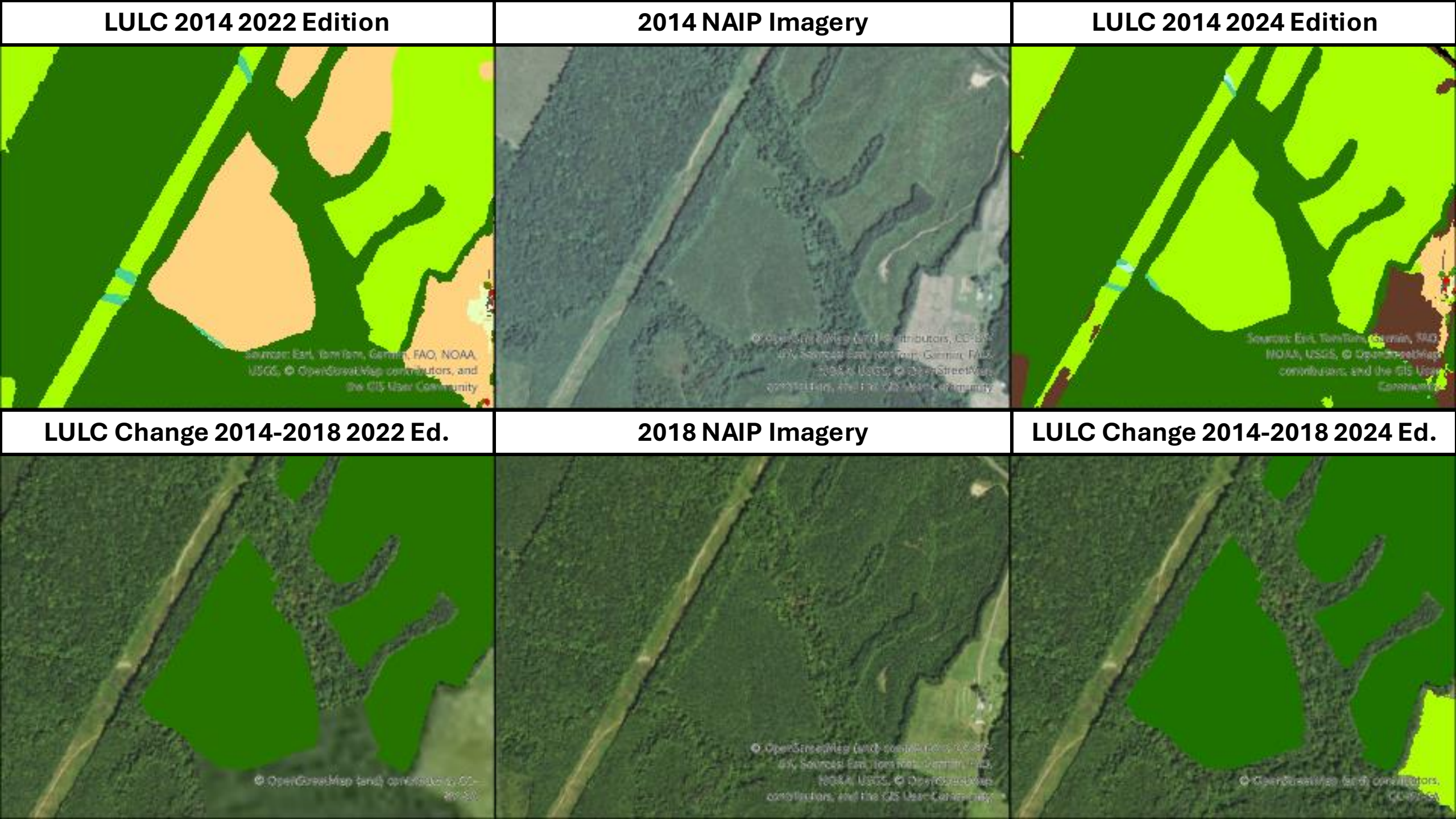
Land Use/Land Cover (LULC) Change 2013/14 to 2017/18

Acres of difference between the 2022 edition and 2024 editions of 2013/14 to 2017/18 LULC change data for the portions of the jurisdictions within the watershed.

2013/14-2017/18		Developed			Natural			Production			Decrease
		Impervious	Pervious	Tree Cover	Forest	Successional	Wetlands	Cropland	Pasture	Extractive	
Developed	Impervious	-	(755)	(1,345)	48	926	(12)	(213)	(663)	7	(2,007)
	Pervious	5,014	-	(4,228)	4,745	29,326	71	560	854	(1,621)	34,722
	Tree Cover	738	(7,922)	-	2,047	775	(2)	(215)	(565)	(6)	(5,149)
Natural	Forest	1,632	(18,772)	(14,608)	-	49,336	2,187	(18,014)	(22,088)	(3,577)	(23,904)
	Successional	7,917	13,202	331	28,131	-	2,152	475	359	1,009	53,576
	Wetlands	(88)	(76)	(2)	537	(2)					97
Production	Cropland	(6,220)	(11,159)	(148)	(13,142)	14,111					(17,258)
	Pasture	(7,785)	(9,206)	1	(18,998)	43,711					6,650
	Extractive	5	2,812	1	12	1,311					4,212
Increase		1,214	(31,874)	(19,997)	3,379	139,444					50,942

Forests and Successional

- Increase in forest conversion to successional (49,336 acres).
- Increase in successional conversion to forests (28,131 acres).



Land Use/Land Cover (LULC) Change 2013/14 to 2017/18

Acres of difference between the 2022 edition and 2024 editions of 2013/14 to 2017/18 LULC change data for the portions of the jurisdictions within the watershed.

2013/14-2017/18		Developed			Natural			Production			Decrease
		Impervious	Pervious	Tree Cover	Forest	Successional	Wetlands	Cropland	Pasture	Extractive	
Developed	Impervious	-	(755)	(1,345)	48	926	(12)	(213)	(663)	7	(2,007)
	Pervious	5,014	-	(4,228)	4,745	29,326	71	560	854	(1,621)	34,722
	Tree Cover	738	(7,922)	-	2,047					(6)	(5,149)
Natural	Forest	1,632	(18,772)	(14,608)	-					(3,577)	(23,904)
	Successional	7,917	13,202	331	28,131					1,009	53,576
	Wetlands	(88)	(76)	(2)	537	(226)	-	(16)	(5)	(27)	97
Production	Cropland	(6,220)	(11,159)	(148)	(13,142)	14,174	-	-	(85)	(677)	(17,258)
	Pasture	(7,785)	(9,206)	1	(18,998)	43,752	-	(84)	-	(1,031)	6,650
	Extractive	5	2,812	1	12	1,352	5	11	13	-	4,212
Increase		1,214	(31,874)	(19,997)	3,379	139,415	4,401	(17,495)	(22,179)	(5,923)	50,942

Developed Tree Cover

- Reduction in Forest conversion to Tree Canopy over Turf (14,608 acres).

LULC 2014 2022 Edition



2014 NAIP Imagery



LULC 2014 2024 Edition



LULC Change 2014-2018 2022 Ed.



2018 NAIP Imagery



LULC Change 2014-2018 2024 Ed.



Land Use/Land Cover (LULC) Change 2013/14 to 2017/18

Acres of difference between the 2022 edition and 2024 editions of 2013/14 to 2017/18 LULC change data for the portions of the jurisdictions within the watershed.

2013/14-2017/18		Developed			Natural			Production			Decrease
		Impervious	Pervious	Tree Cover	Forest	Successional	Wetlands	Cropland	Pasture	Extractive	
Developed	Impervious	-	(755)	(1,345)	48	926	(12)	(213)	(663)	7	(2,007)
	Pervious	5,014	-	(4,228)	4,745	29,326	71	560	854	(1,621)	34,722
	Tree Cover	738	(7,922)	-	2				(5)	(6)	(5,149)
Natural	Forest	1,632	(18,772)	(14,608)					(8)	(3,577)	(23,904)
	Successional	7,917	13,202	331	28				9	1,009	53,576
	Wetlands	(88)	(76)	(2)					(5)	(27)	97
Production	Cropland	(6,220)	(11,159)	(148)	(13,142)	14,174	-	-	(85)	(677)	(17,258)
	Pasture	(7,785)	(9,206)	1	(18,998)	43,752	-	(84)	-	(1,031)	6,650
	Extractive	5	2,812	1	12	1,352	5	11	13	-	4,212
Increase		1,214	(31,874)	(19,997)	3,379	139,415	4,401	(17,495)	(22,179)	(5,923)	50,942

Agriculture Improvement

- Reduction in agriculture conversion to development (34,370 acres).

LULC 2014 2022 Edition



2014 NAIP Imagery



LULC 2014 2024 Edition



LULC Change 2014-2018 2022 Ed.



2018 NAIP Imagery



LULC Change 2014-2018 2024 Ed.

