

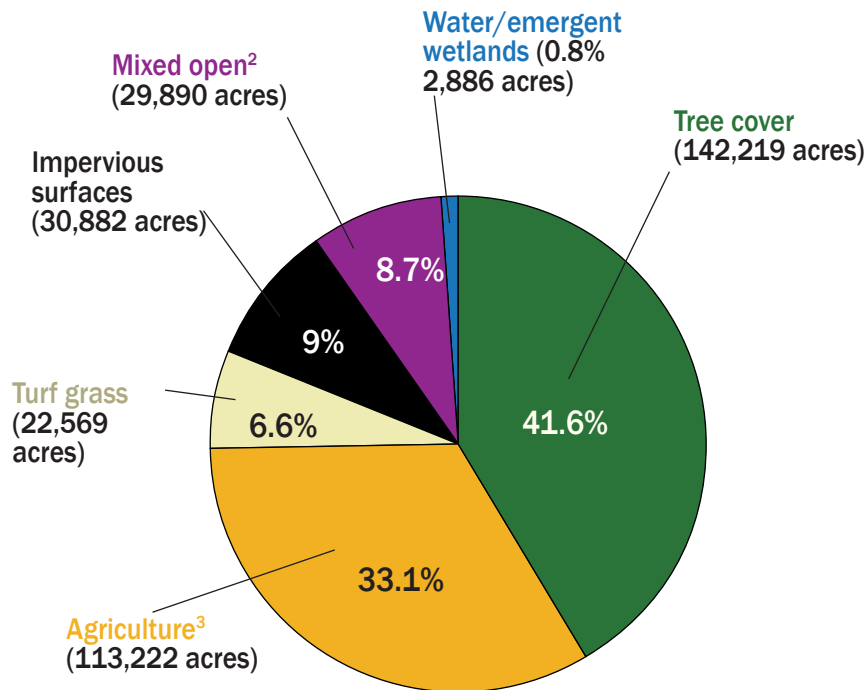
Tree Cover Status and Change for Cumberland County, PA

41.6%
Total percent of county that is tree cover

\$14+ million
Benefits provided by tree cover
(Air quality, stormwater, and carbon)

433 acres
Net tree cover lost in four years

What is the land cover breakdown in your county?



341,668 acres of land in Cumberland in 2018

Where does tree canopy occur in your county?



82% is in forest⁴
(116,180 acres)



6% is on agricultural land
(8,149 acres)



11% is over turf grass
(15,762 acres)



1% is over impervious
(2,128 acres)

2. mixed open is any herbaceous or barren land that is not turf grass or agriculture.

3. agriculture is land classified as cropland, pasture, or orchards

4. forest is defined as tree cover that are in patches over an acre in area and have a minimum radius of 120 feet.

What are some benefits of tree cover in your county?

Based on the latest high-resolution imagery (2018), i-Tree Landscape estimates that the trees in your county provide the following benefits:



Total Air Pollution¹ Removal Value

9,665,973 lbs removed annually
\$9,162,946 saved annually

1. Total air pollution removal includes CO, NO2, O3, PM2.5, SO2, and PM10.



Gallons of Reduced Stormwater Runoff Value

560,088,604 gallons reduced annually
\$5,004,953 saved annually



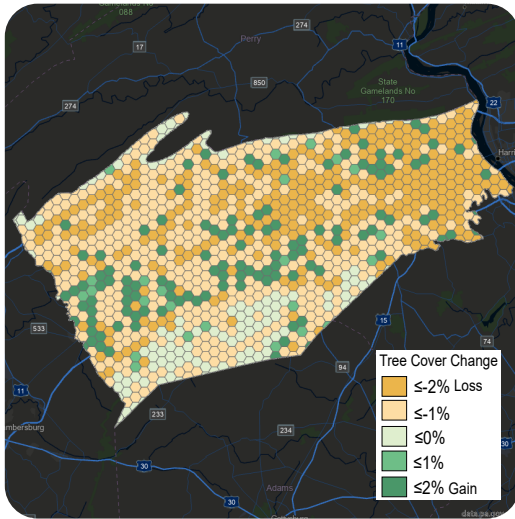
Carbon Sequestered Value

120,250 tons removed annually
\$10,594 saved annually

More information on this and i-Tree Landscape can be found at: landscape.itreetools.org

Tree Canopy Status and Change for Cumberland County, PA

How is tree cover changing on developed and developing lands?



Tree Cover Change, Cumberland, Pennsylvania
(at a one square mile scale)

Understanding how tree cover changes over time can inform the sustainable management of forests and community trees. See the map to the left for information on where your county has lost and gained tree cover from 2013/14 to 2017/18.

- Tree cover can be **lost quickly** due to human activities (e.g. construction) or natural events (e.g., severe weather).
- Tree cover can be **gradually increased** through tree planting and natural regrowth, but maintaining this new growth requires long-term investments.
- To ensure trees and forests continue to provide benefits for years to come, it is important to both **preserve existing tree cover** and seek opportunities to **grow new trees and forests**.

Tree cover change from 2013/2014 to 2017/2018



For more information, please reference these following sources:

Chesapeake Tree Canopy Network
(chesapeaketrees.net)

Chesapeake Conservancy Land Use
(www.chesapeakeconservancy.org/what-we-do/innovate/land-use-change)

Capitalizing on the Benefits of Trees
(www.chesapeakebay.net/channel_files/42983/module_4_-_capitalizing_on_the_benefits_of_trees.pdf)