

# QUARTERLY PROGRESS MEETING – February 2021

## Chesapeake Bay Program



# Tree Canopy

*Julie Mawhorter*  
*Forestry Workgroup,*  
*Tree Canopy Coordinator*  
*USDA Forest Service*  
*julie.mawhorter@usda.gov*

The screenshot shows the homepage of the Chesapeake Tree Canopy Network. At the top is a dark blue navigation bar with the logo on the left and links for SIGN UP, NEWSLETTER ARCHIVE, ABOUT US, CONTACT US, and CHESAPEAKEFORESTBUFFERS.NET on the right. Below the navigation bar is a main content area with a light gray background. On the left, it says 'Welcome to the Chesapeake Tree Canopy Network' and provides a brief description of the network's purpose. On the right, there is a large aerial photograph of a city street with trees, and a text box that reads 'Baltimore Tree Trust: Doing More Together' with a 'Read More' link. Below the main content area is a dark blue footer with the text 'Get updates on tree canopy news and events!' and links for SIGN UP and NEWSLETTER ARCHIVES. At the bottom of the page, there is a section titled 'Tree Canopy Initiatives' with a map showing various locations marked with blue and red pins. The map has a search bar and a 'My Style' button. To the right of the map, there is a text box with the 'chesapeake network' logo and a call to action to join the group on the Chesapeake Network.

Chesapeake Tree Canopy Network

SIGN UP NEWSLETTER ARCHIVE ABOUT US CONTACT US CHESAPEAKEFORESTBUFFERS.NET

WHY TREE CANOPY? UNDERSTAND YOUR CANOPY EXPAND YOUR CANOPY MAINTAIN YOUR CANOPY

Welcome to the Chesapeake Tree Canopy Network

Connecting you with resources, stories, and best practices to [understand your canopy](#), [expand your canopy](#), and [maintain your canopy](#). Learn about and make the case to others [why tree canopy](#) is so critical to a healthy, vibrant Chesapeake Bay watershed. We are building this resource as we go, so please [send your ideas](#) and suggestions for making the network most helpful.

Baltimore Tree Trust: Doing More Together  
[Read More](#)

Get updates on tree canopy news and events! SIGN UP NEWSLETTER ARCHIVES

Tree Canopy Initiatives

Find local tree canopy assessments, goals, and urban forestry contacts.

My Style Map Address Search

chesapeake network

Looking to participate in the tree canopy conversation? Join our group on the [Chesapeake Network](#). Need help joining, posting, or have questions? Check out our [help guide \(PDF\)](#).

## CREATE VIBRANT COMMUNITIES

- 1 Incorporating trees into common spaces in public housing increases social activities.<sup>1</sup>
- 2 Having larger trees in yards and on the street can improve home values by 3%-15%.<sup>2</sup>
- 3 Shoppers will spend 9%-12% more in areas with better tree canopy.<sup>3</sup>

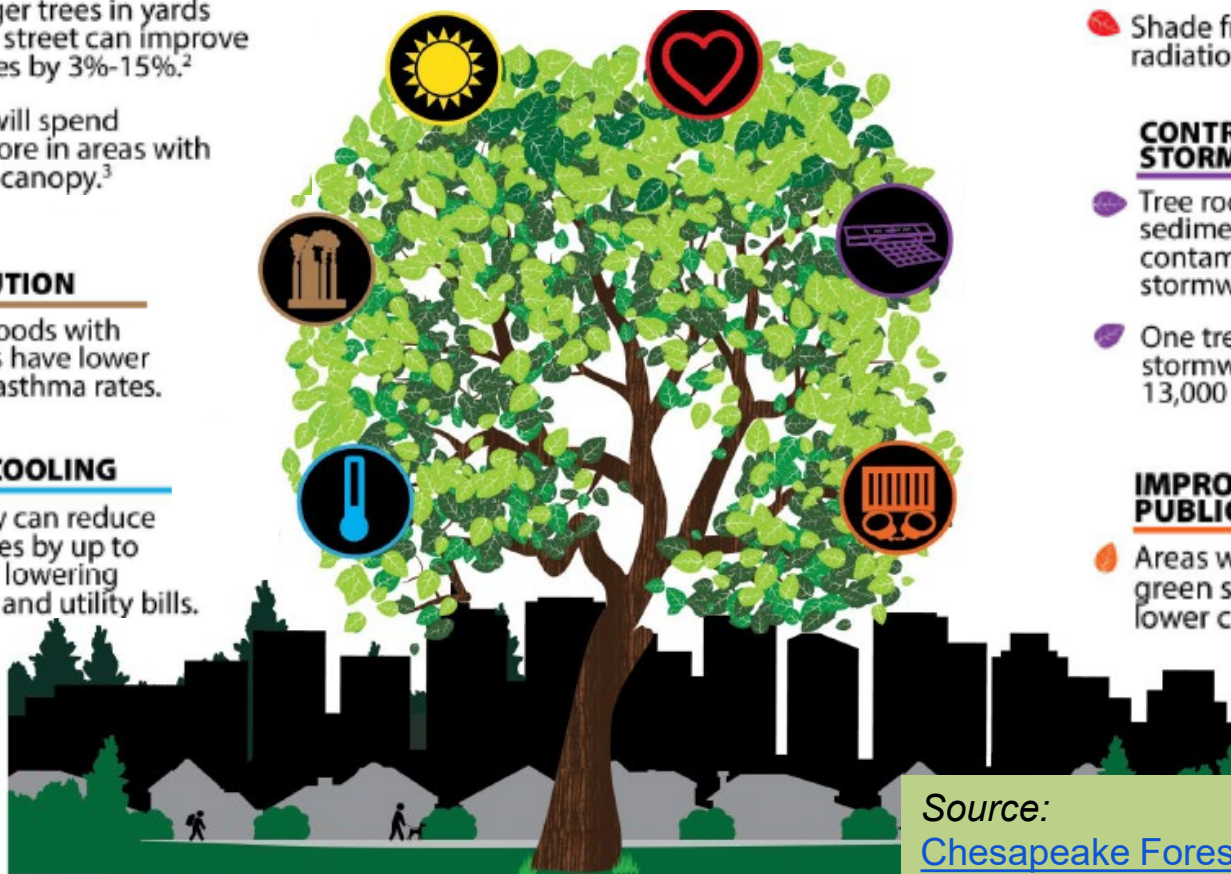
## REDUCE AIR POLLUTION

- 1 Neighborhoods with lots of trees have lower childhood asthma rates.

## PROVIDE SHADE & COOLING

- 1 Tree canopy can reduce temperatures by up to 20 degrees, lowering health risks and utility bills.

# TREES in COMMUNITIES



## IMPROVE HUMAN HEALTH

- 1 Trees help reduce stress, lower blood pressure, and boost the immune system.
- 2 Shade from trees reduces radiation that causes skin cancer.

## CONTROL STORMWATER

- 1 Tree roots can trap sediment and filter contaminants from stormwater.
- 2 One tree can reduce stormwater runoff by 13,000 gallons per year.<sup>4</sup>

## IMPROVE PUBLIC SAFETY

- 1 Areas with increased green space have lower crime rates.<sup>3</sup>

Source:

[Chesapeake Forest Restoration Strategy](#)

*Through the Chesapeake Bay Watershed Agreement, the Chesapeake Bay Program has committed to...*

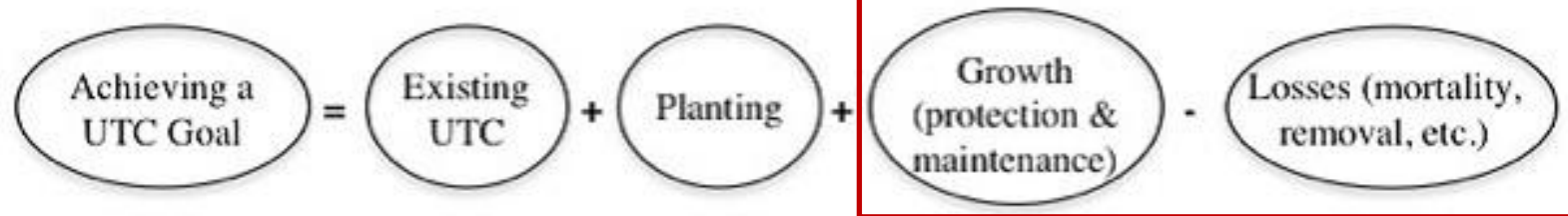


**Goal:** *Vital Habitats*

**Outcome:** *Tree Canopy*

Continually increase urban tree canopy capacity to provide air quality, water quality and habitat benefits throughout the watershed. Expand urban tree canopy by **2,400 acres by 2025.**

*It's not just about planting...*

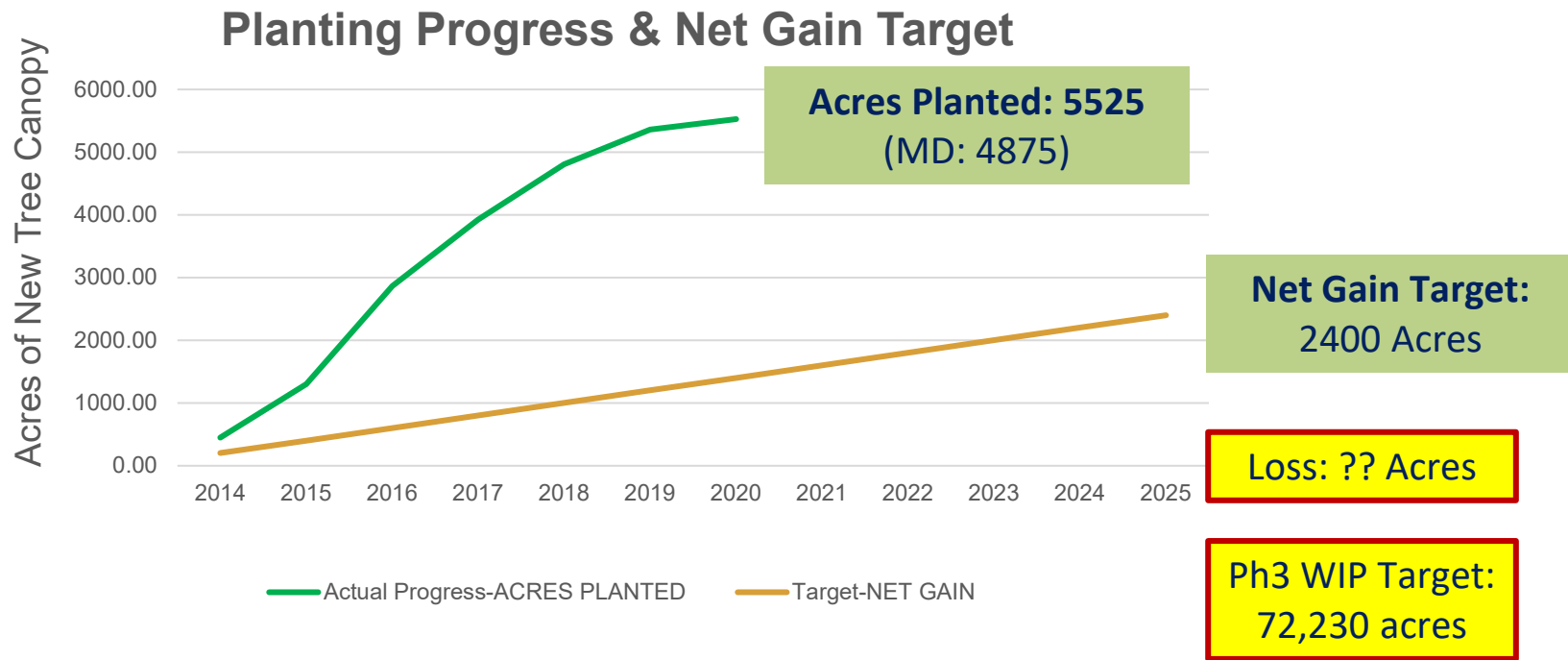


Tree Canopy Indicator has 2 components:

- 1) States report three urban tree planting BMPs annually for TMDL
- 2) Long term progress analyzed through CBP Land Cover updates (2021)



## What is our Expected and Actual Progress?





# In some areas, we are losing ground...

## Maryland Tree Canopy Change: Preliminary Results

County	Tree Canopy Gain (acres)			Tree Canopy Loss (acres)			
	Total	In 100ft Stream Buffers	In Critical Areas	Total	In Urban Areas	In 100ft Stream Buffers	In Critical Areas
Anne Arundel	188.24	5.33	78.68	2,543.78	1,860.08	83.04	425.51
Montgomery	656.14	52.06	-	6,364.05	4,807.08	666.69	-
Prince George's	518.15	23.42	44.38	7,567.04	5,397.82	649.29	334.24
Calvert	899.24	24.29	117.67	1,566.72	643.00	28.28	134.22
Charles	1,478.35	69.31	65.89	2,529.30	634.85	66.38	87.19
St. Mary's	1,524.98	75.11	266.67	1,897.06	318.22	42.82	208.71
Dorchester	2,111.68	151.91	517.18	1,730.68	26.35	68.92	429.74
Somerset	4,778.99	123.04	626.04	1,258.22	17.18	44.45	123.11
Wicomico	3,703.89	157.95	206.13	2,337.47	288.33	76.60	181.30
Worcester	6,900.44	587.63	350.19	3,514.53	119.08	226.46	193.86
TOTAL	22,760.11	1,270.03	2,272.83	31,308.86	14,111.98	1,952.93	2,117.86

= Baltimore-Washington Corridor

= Southern Maryland

= Lower Eastern Shore

Iris Allen, Maryland Forest Service  
July 2020





# Learn

*What have we learned in the last two years?*



## Successes – Summit 2.0

### You're Invited!

Save the date for the 2020 Chesapeake Tree Canopy Summit

**When:** Tuesday, January 14, 2020, 10:00 am to 4:00 pm

Wednesday, January 15, 2020, 9:00 am to 3:00 pm

**Where:** [Patuxent Research Refuge - U.S. Fish and Wildlife Service](#)

National Wildlife Visitor Center

10901 Scarlet Tanager Loop

Laurel, MD 20708

[Register Now!](#)



#### Summit Objectives:

- Build participant knowledge and understanding, and advance individual community tree canopy efforts, through hands-on training, facilitated discussion, and presentation by subject matter experts;
- Inform future state and sub-regional trainings and catalyze collaboration with new cross-sector partners; and
- Identify opportunities for continuous improvement in approach to meeting tree canopy goals.







## Successes – Summit 2.0

### ***BOLSTER*** Funding & Partnership



Financing Urban Tree Canopy Programs  
*Guidebook for Local Governments in the Chesapeake Bay Watershed*

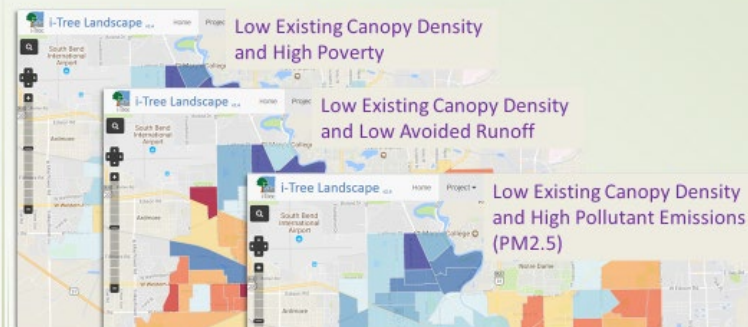
Prepared by  
the Environmental Finance Center at the University of Maryland  
and the Alliance for the Chesapeake Bay

MARCH 2019

### ***STRENGTHEN*** Policy & Ordinances



## ***INCREASE*** Technical Capacity & Knowledge Inform Community Decisions and City Priorities



### ***EXPAND*** Community Outreach & Education



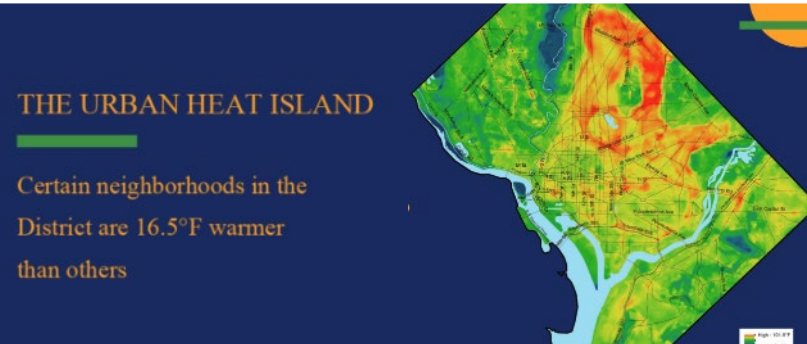
**Trees, Equity and Cultural Competency**



**ACTION 1.1** Implement state programs and grants to incentivize tree canopy progress



**Successes – States**



Pennsylvania initiative to convert 10,000 acres of lawns into meadows, forests



**My Tree Counts** A Community Tree Map

Every tree planted makes a difference to the health of our communities and the Chesapeake Bay watershed. The Virginia Department of Forestry (VDOF) and partners want to highlight tree planting projects from across the state.

Our Tree Stories How My Tree Makes a Difference Add Your Tree!

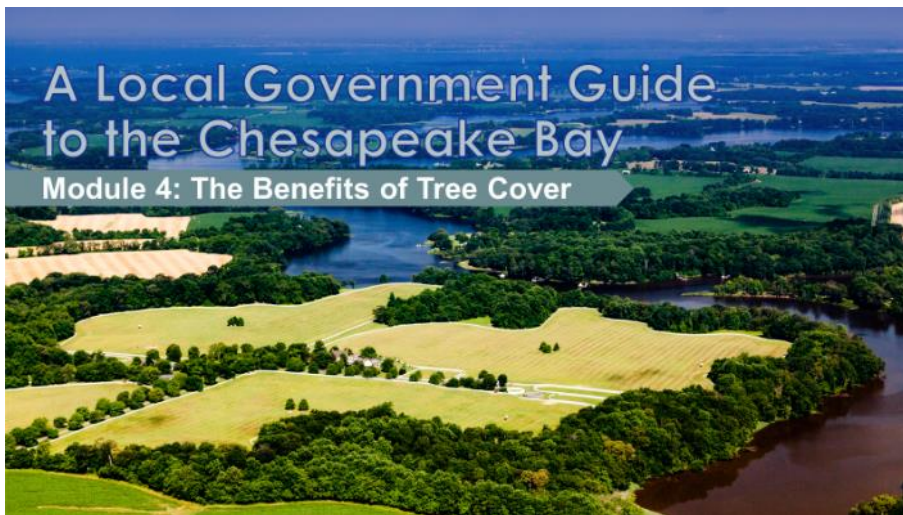
Carver Tree Project Cary Elementary Food Forest





## Successes – Cross Outcome

### Local Leadership



## Environmental Literacy

### Trees and Schools: Growing the Connection A Resource Guide for Chesapeake Communities



Photo: Tree planting with students at St. Anne's School in Delaware; courtesy of Delaware Forest Service

Draft Version for Stakeholder Input, December 2020

Written by Maya Claggett in collaboration with the Chesapeake Bay Program Forestry Workgroup. Please send inquiries or suggestions for future versions of this Guide to [Julie Mawhorter](mailto:Julie.Mawhorter@delaware.gov), Chesapeake Tree Canopy Coordinator by March 1, 2021.

<https://chesapeaketrees.net/category/schools/>



## Challenges

### COVID IMPACTS

- Delays, budgets, priorities

Delayed workplan action:  
Funding & Policy Roundtable

- ✓ Many drivers of loss (development, storms, pests)
- ✓ Weak or nonexistent local ordinances and staffing
- ✓ Inadequate or patchy funding
- ✓ People take trees for granted and sometimes focus on negatives





## Challenges & Lessons Learned



## 15th Annual Chesapeake Watershed Forum

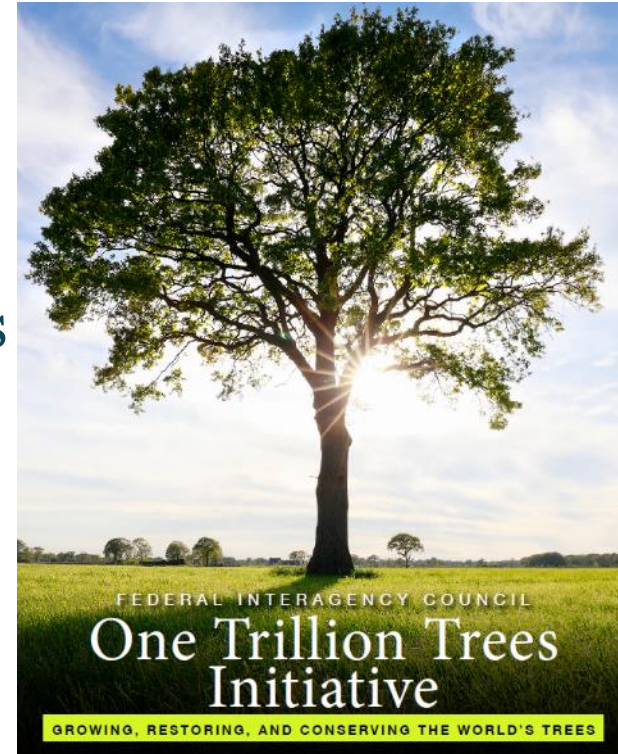


Learn more: [Heat, Health & Trees Session](https://www.nytimes.com/interactive/2020/08/24/climate/racism-redlining-cities-global-warming.html), Chesapeake Watershed Forum;  
<https://www.nytimes.com/interactive/2020/08/24/climate/racism-redlining-cities-global-warming.html>



## On the Horizon

- New Land Cover Data & Analysis (2021)
- CBP DEIJ Strategy and Tree Equity Focus
- Continued COVID Impacts
- Climate Initiatives focused on trees (e.g. Trillion Trees)







# Adapt

*How does all of this impact our work?*



## **Based on what we learned, we plan to ...**

- 1. Develop and share data, tools & best practices for Tree Equity**
- 2. Assess and Communicate Tree Canopy Status & Change to Stakeholders**
  - Bay-wide Summary Report and Local Fact Sheets
- 3. COVID- Continue virtual opportunities and plan for 2022 Summit**
- 4. Continue partnership work around priority issues and needs**
  - Funding & Policy Roundtable
  - Collaboration-Local Leadership, Communications, Stormwater, Schools



# Help

*How can the Management Board  
lead the Program to adapt?*



## Help Needed

- Prioritize **CBP DEIJ** Implementation Plan efforts to grow investments in communities, with **tree equity as a focus**
- Continue and grow the **support for critical state urban and community forestry programs**, through leveraging available programs and policies
- **Request:** in each state, MB member(s) work with State Tree Canopy Lead to document existing programs/policies that could help **maintain and expand** tree canopy  
*(e.g. water quality, climate, health, community development, workforce)*
- Participate in the **Funding & Policy Roundtable** and next Summit

# QUARTERLY PROGRESS MEETING

## *Chesapeake Bay Program*



## Discussion

To learn more or engage with our Strategy/  
Workplan development, please reach out!  
Julie Mawhorter, [julie.mawhorter@usda.gov](mailto:julie.mawhorter@usda.gov)