



Demonstrating the Value of Retaining Forestland in the Chesapeake Bay Watershed



Photo by Will Parson
Chesapeake Bay Program

Greg Evans, Virginia Department of Forestry
November 2, 2016



Why Retaining Forests and Healthy Watersheds Matter...

**Insurance
Policy**





Restoration is Not an Easy Answer

The cost of repairing damaged ecosystems is high and has a low success rate

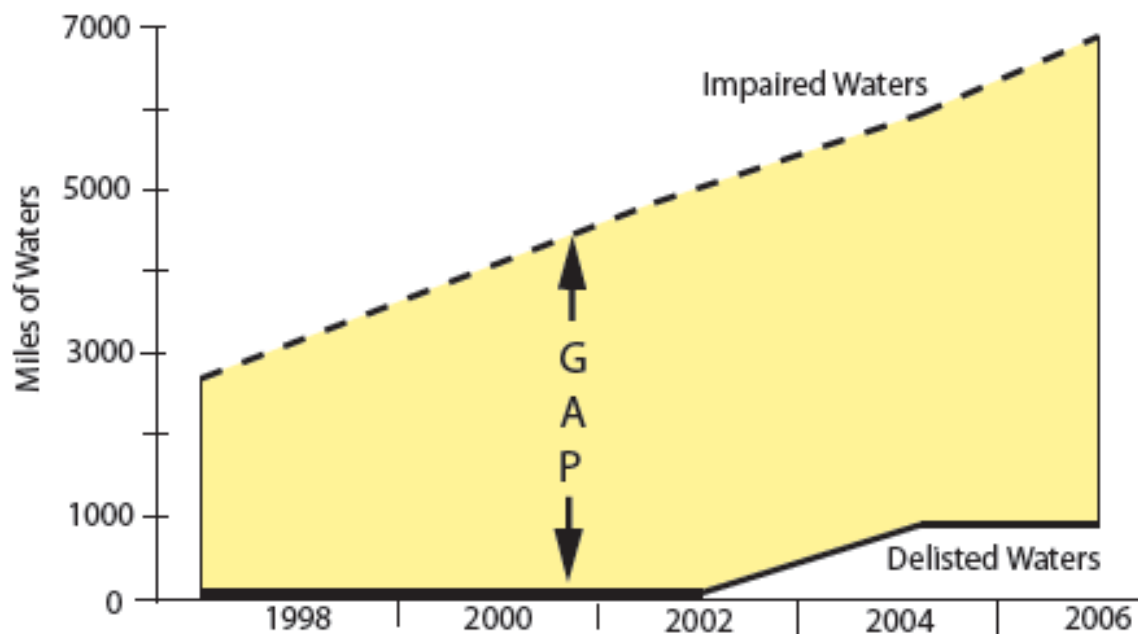


Figure 1-2 Gap between impaired and restored waters in EPA Region 3.



The Challenge

KEEPING THIS FROM BECOMING THIS



....While Still Promoting
Economic Growth



Project Goals



PHASE I: PLANTING THE SEEDLING

Build economic case for increased forestland retention actions by localities valued in the TMDL.



PHASE II: GROWING THE TREE

Build consensus on policies, practices and incentives necessary to stimulate land use decisions that retain high conservation value forestland.

Healthy Watersheds Forest/TMDL Project Partners

The Nature
Conservancy



Protecting nature. Preserving life.™



pennsylvania

DEPARTMENT OF CONSERVATION
AND NATURAL RESOURCES



Be River Friendly
It's Your Backyard

The Rappahannock River Basin Commission



pennsylvania

DEPARTMENT OF ENVIRONMENTAL
PROTECTION



Virginia
WATER RESOURCES
Research Center

Phase I Economic Findings:

\$125 Million

**Possible Future Offset
Savings**





Key Benefit of VA/PA Partnership



➤ Diverse solutions

➤ Enhanced applicability

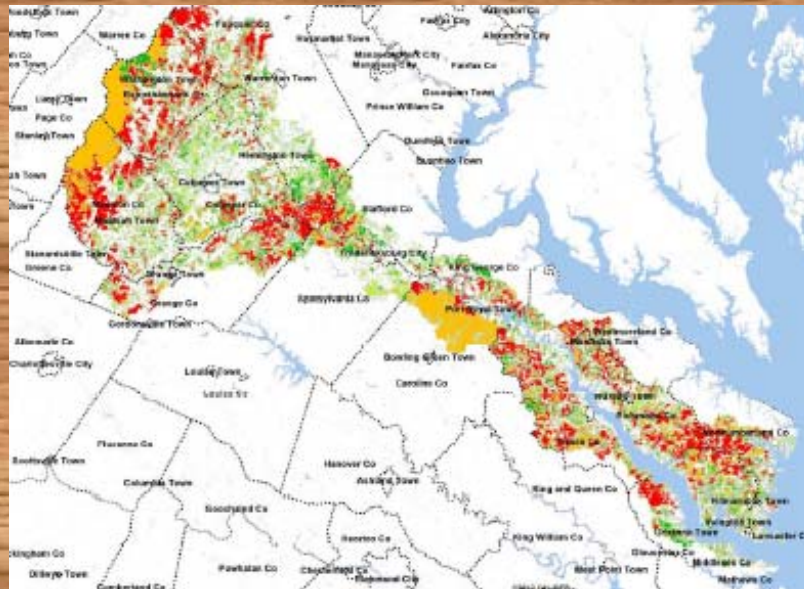


➤ Increased impact

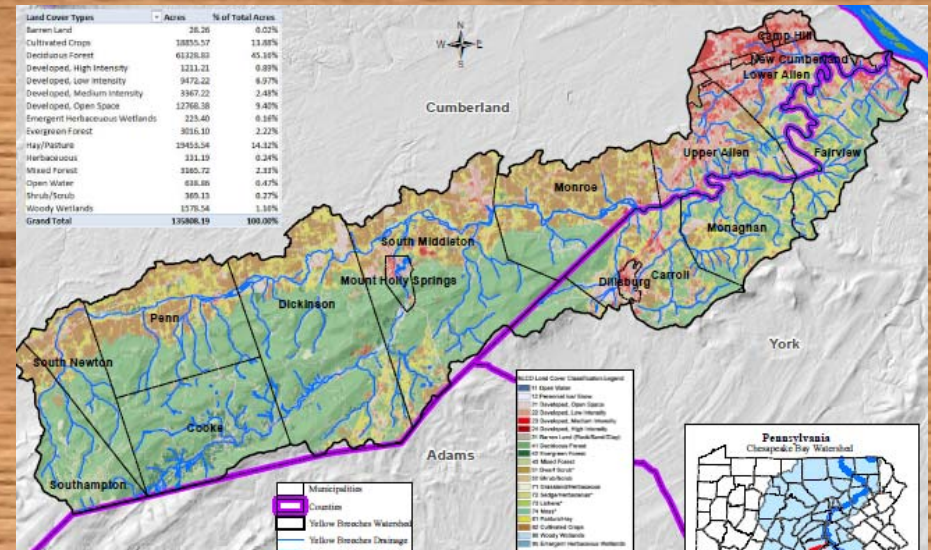




Phase II Study Areas:



Virginia
Rappahannock
River Basin



Pennsylvania
Yellow Breeches
Watershed



Phase II Goal: Local Engagement

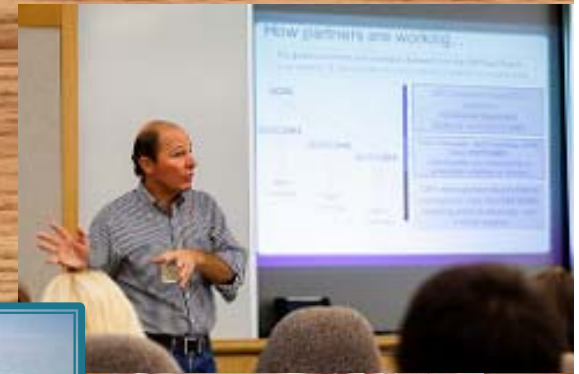


Photo credit: Ken Sherman



Phase II Objectives



- PA duplicates VA Phase I Modeling effort
- VA/PA/localities agree on toolkit of incentives and land use policy changes
- Make recommendations to EPA and Chesapeake Bay Program





Potential "Tool Box" Mechanisms

A green metal toolbox with a silver handle and latch, shown from a slightly elevated perspective.

**Land Use
Policies,
Zoning and
Regulations**

A green metal toolbox with a silver handle and latch, shown from a slightly elevated perspective.

**Local
Spending and
Tax Policies**

A green metal toolbox with a silver handle and latch, shown from a slightly elevated perspective.

**Land
Acquisition**

A green metal toolbox with a silver handle and latch, shown from a slightly elevated perspective.

**Voluntary
Land
Protection
Techniques**

Success Outcomes – Ripple Effect

Empowered governments
at local level

Policies at all government levels
provide incentives for forestland
retention

Quality communities and healthy
watersheds at reduced cost



For further information:

Greg Evans, Virginia Department of Forestry
gregory.evans@dof.virginia.gov

Eldon James, Rappahannock River Basin Commission
ejames7@earthlink.net

Su Ann Shupp, Pennsylvania Department of Conservation
and Natural Resources, Bureau of Forestry
sushupp@pa.gov

James Davis-Martin, Virginia Department of Environmental
Quality
James.Davis-Martin@deq.virginia.gov

Mark Bryer, The Nature Conservancy
mbryer@tnc.org

