

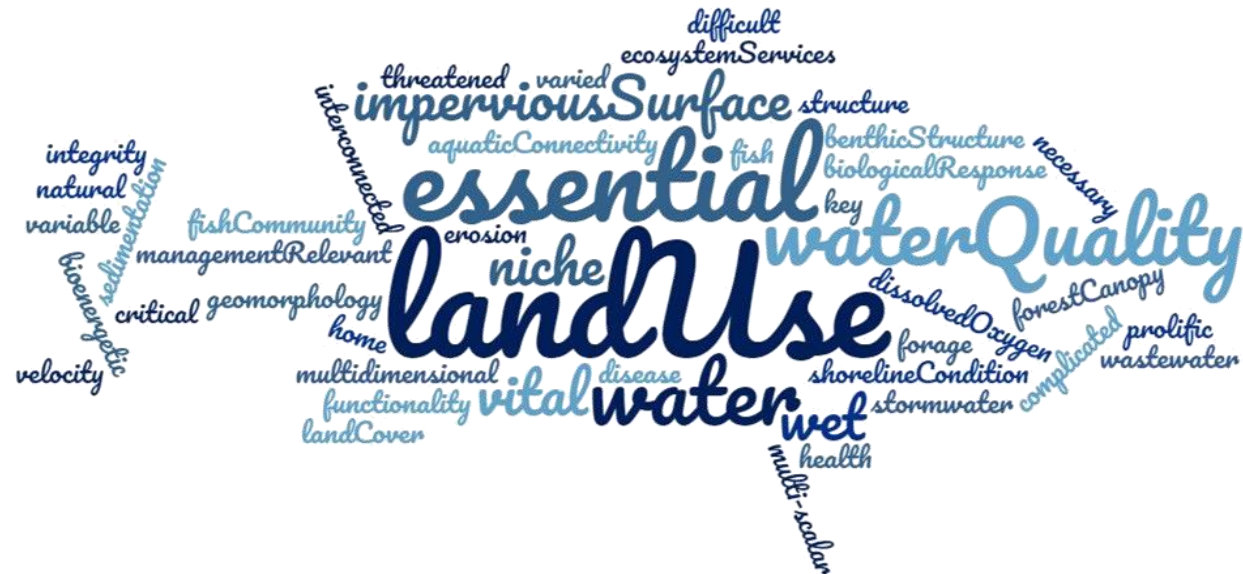


Chesapeake Bay Program
Science. Restoration Partnership.

FISH HABITAT OUTCOME

Gina Hunt

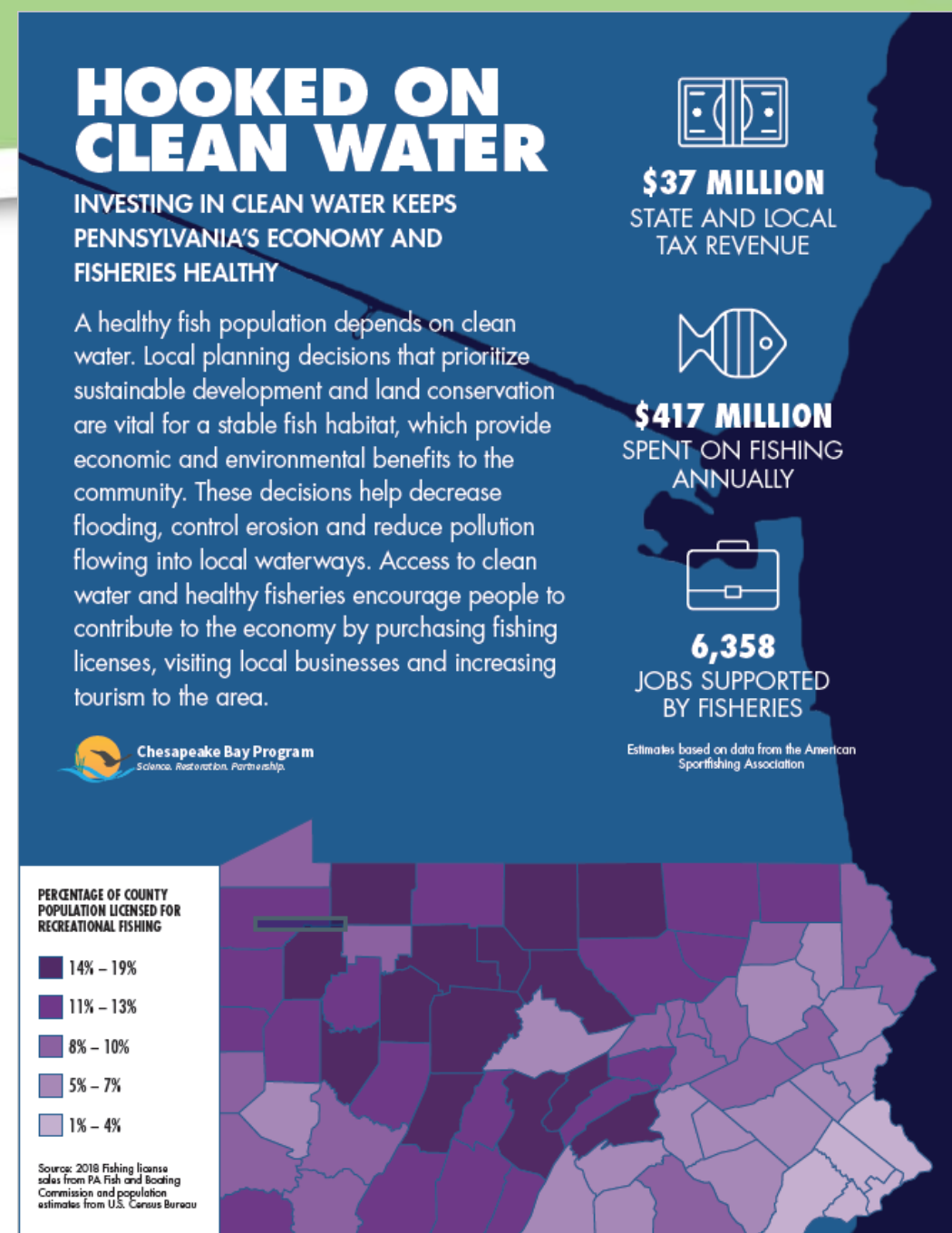
MD. Department of Natural Resources



Fish Habitat

Top Priorities:

- Fish Habitat Assessment
 - Began with a workshop in 2018. Partnering with USGS and NOAA for a regional assessment of tidal and nontidal waters.
- Communication
 - Hardened Shorelines- priority stressor
 - Local Government
 - Co-benefits of fish habitat
 - Local Govt Engagement Initiative



Fish Habitat

Plans for Achieving Outcome:

These are the management strategies of the Fish Habitat Outcome

Compile and identify available data on habitats, habitat vulnerabilities and fish utilization

Identify stressors to fish habitat and evaluate scale

Map and target high-value fish habitat for improved conservation and restoration.

Communicate importance of fish habitat

Evaluate examples from other regions and engage with the ACFHP

Plans for Achieving Outcome:

- Assessment Framework Workshop
 - Looked at various uses of spatial/temporal data. Will have recommendations by the end of January
- USGS Workplan Actions
 - Update stressor inventory, summary of fish metadata, evaluation of different scales assessment methods
- Pilot Studies for Regional Fish Habitat Assessment (Action 2.7)
- Communication
 - Shorelines GIT project. Follow-up to the behavior research that Rachel presented. Received bids and project will begin next month.
 - Local Government Workshops. Approved as priority project for GIT funding for the Local Government GIT.

Obstacles /Barriers to Progress:

- Ensuring assessment work is useful, accessible, and applicable for local partners and fish managers. Very different purposes:
 - Local Government- Conservation and Restoration priorities
 - Management- Habitat suitability as a reference for stock assessment.
 - Stakeholder Needs Report (Action 4.1). 2019 interviews with Fisheries Managers, Permitting Agencies, and Land Planners
 - American Eel assessment project to see what can be added to stock assessments from these habitat studies
- An understanding of all analysis and assessments going on with CBP

Potential for Collaboration with other Workgroups or Goal Teams:

- The obstacle is also an opportunity.
 - Integration between Healthy watersheds assessment and other assessment work
- Is there an inventory of CBP analysis, assessment, and tools?
 - Include a description of their intended audiences and platform for use.
- Citizen monitoring effort for fish habitat. Can we partner with existing efforts?
- Local Government Messages