



# **DoD Resources for Defense Communities in the Chesapeake Bay Watershed**

**Jessica Rodriguez**

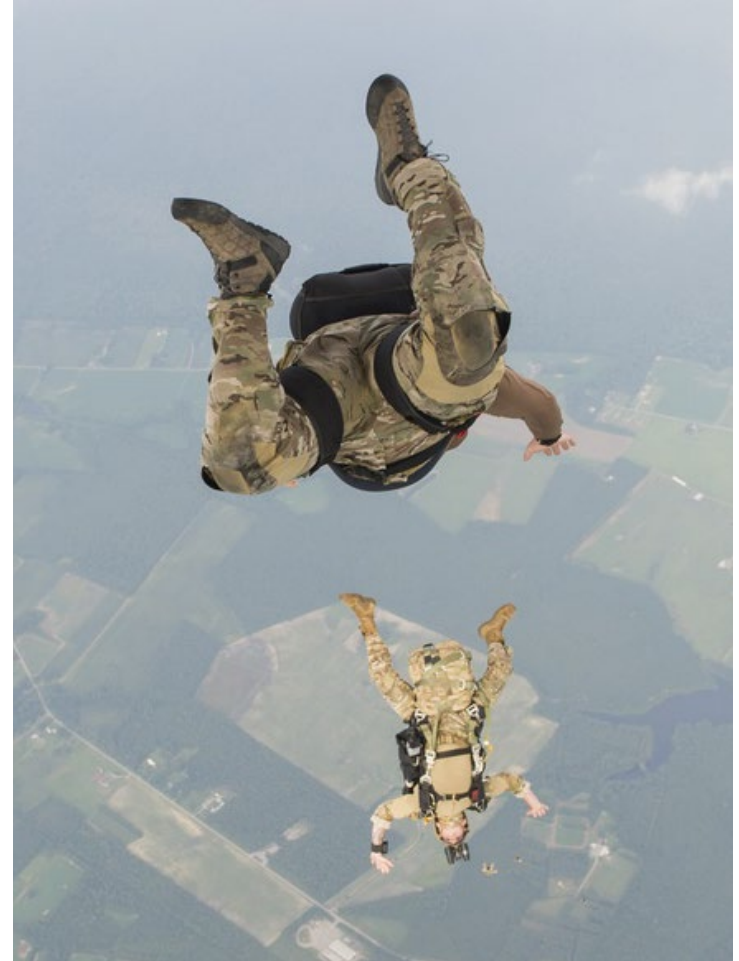
**DoD Chesapeake Bay Program Coordinator**

**March 17, 2022**



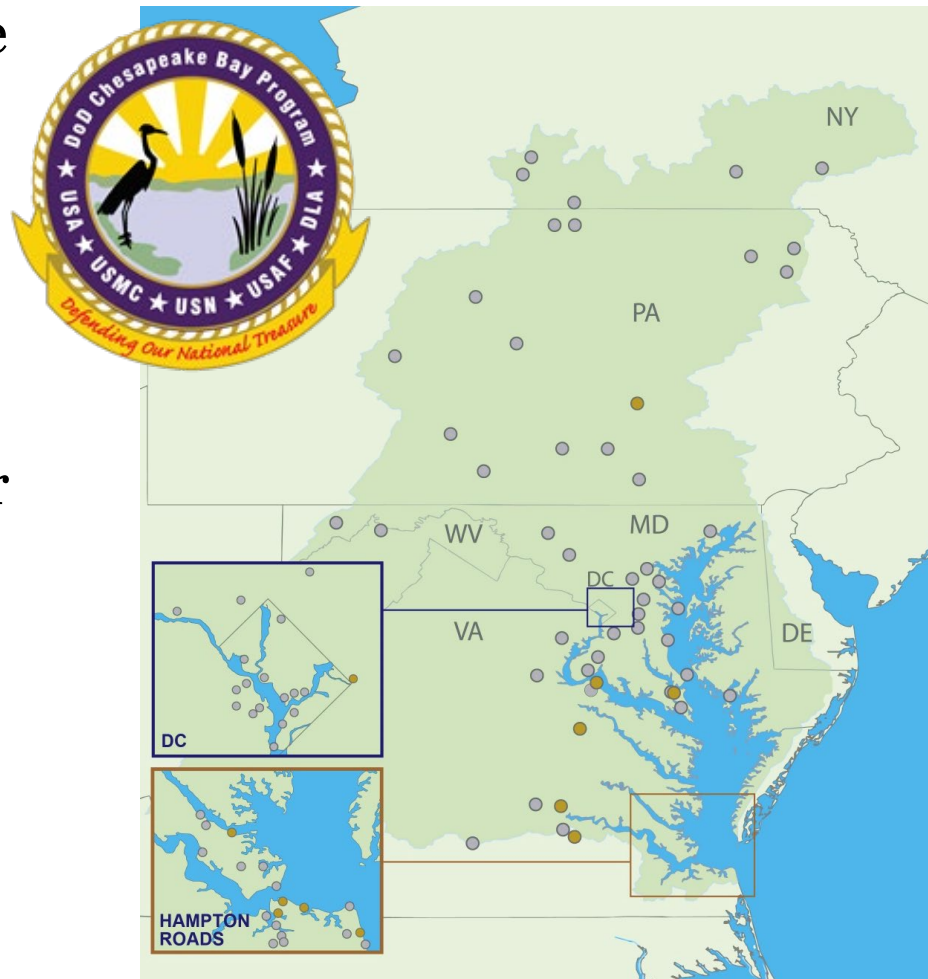
# Presentation Outline

- DoD Chesapeake Bay Program (CBP)
- Office of Local Defense Community and Cooperation (OLDCC) Planning Resources
- Project Implementation Resources:
  - Readiness and Environmental Protection Integration (REPI) Program
  - Sentinel Landscape Partnerships
  - Defense Community Infrastructure Program (DCIP)
- Key Takeaways



# DoD Chesapeake Bay Program

- In 1984, DoD became one of the first federal departments to formally join the Partnership
- DoD Services manage
  - ~ 136 sites
  - ~ 400,000 Acres
  - ~ 1% of the watershed
- DoD is the largest federal owner of developed land
- Dept. of Navy is the Lead Agent
- Commander Navy Region Mid-Atlantic (CNRMA) oversees the program
- Each Service has its own CBP lead



# DoD Chesapeake Bay Program

## Vision

Protect the Chesapeake Bay for military readiness, for our community and for future generations.

## Mission



Partner with federal, state, and local governments, and organizations and citizen groups to maximize resources and strengthen Bay restoration and protection efforts.

Engage all levels of DoD military, civilians, and their families to be environmental stewards of the watershed where they live.

Integrate restoration, pollution prevention, and stewardship initiatives for the Chesapeake Bay into DoD's daily mission of providing the military forces needed to deter war and protect the security of the United States.

## Program Drivers

- **2014 Chesapeake Bay Watershed Agreement**
- **Executive Order 13508 – Protecting and Restoring the Chesapeake Bay Watershed**



# OLDCC Cooperative Planning Resources

## Military Installation Sustainability Program

Designed to provide technical and financial assistance to states and local governments to analyze and implement actions necessary to foster, protect, and enhance military installation sustainability. These program activities encompass the previous **Compatible Use/Joint Land Use Study projects** as well as the recently authorized **Installation Resilience projects**.

## Compatible Use Studies (CUPs)

Studies are designed for communities to comprehensively understand concerns of the military installation, opportunities for civilian growth, and to develop a responsive strategy and implementation actions that work in concert with the installation's missions.

## Military Installation Resilience Review (MIRR)

Identify risks to resources outside and on the installation necessary to conduct critical missions, and to develop a responsive strategy for implementation.

# OLDCC Cooperative Planning Resources

**There are two ways a community can participate in the Military Installation Sustainability program:**

## **Community Nomination Process**

State and local governments can self-nominate with installation support by responding to a Federal Funding Opportunity posted on <https://www.grants.gov/> or express interest in a Military Installation Resilience project through the following process.

## **Service Nomination Process**

Military Services may nominate installation(s) for Military Installation Sustainability assistance through the OLDCC's annual call (typically made in March) or may also nominate installations out of cycle.

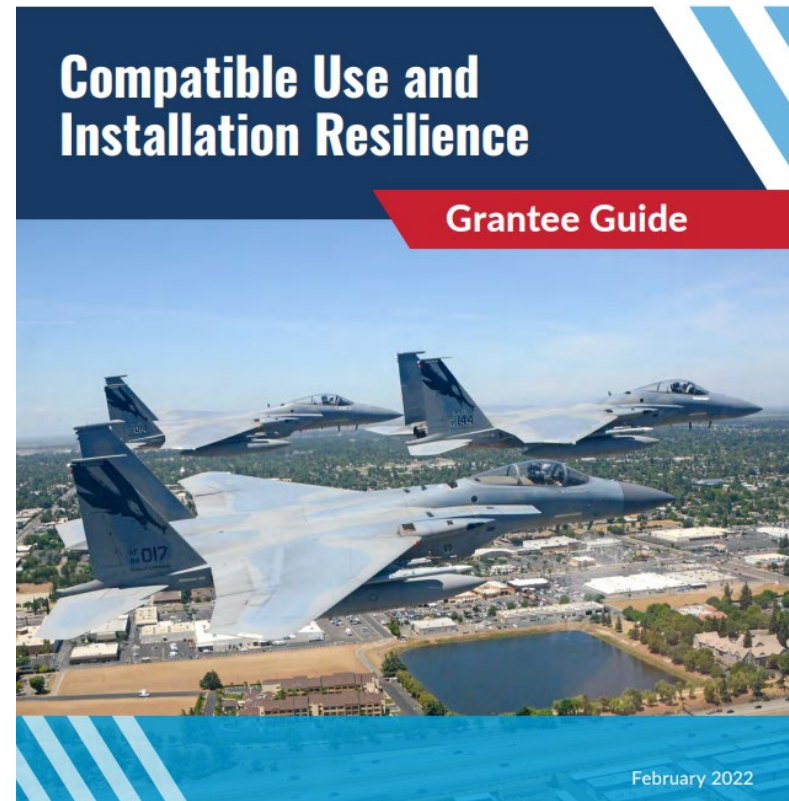


# OLDCC Cooperative Planning Resources

- Cost sharing is required. A minimum of ten percent (10%) of the project's total proposed funding is to be comprised of non-Federal sources.
- Compatible Use and Installation Resilience Grantee Guide.  
Released Feb 2022  
<https://oldcc.gov/resource/compatible-use-and-installation-resilience-grantee-guide>

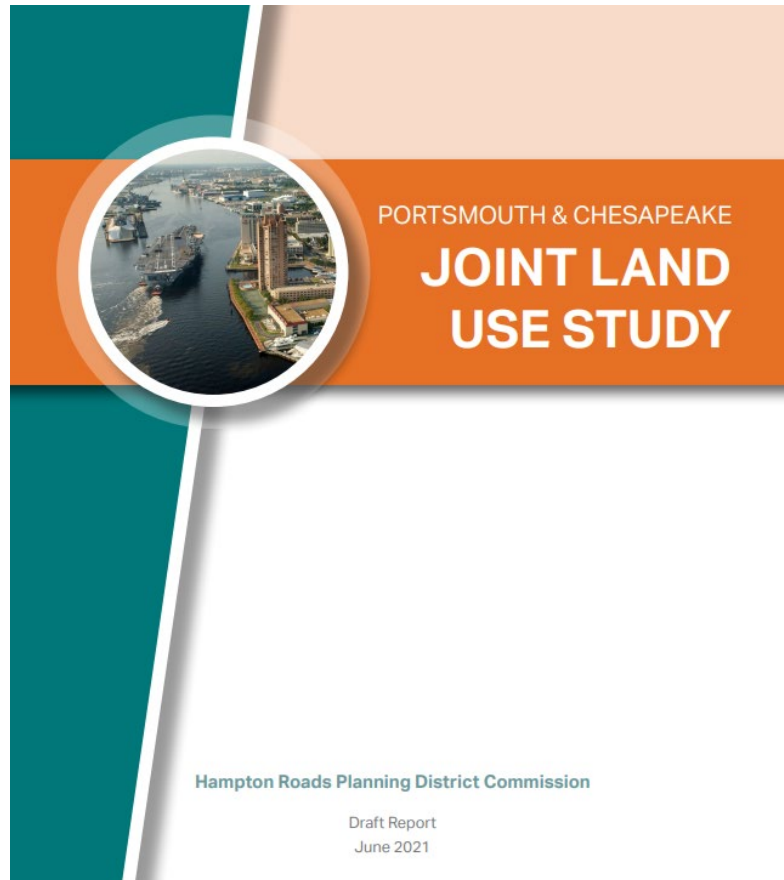


U.S. Department of Defense  
Office of Local Defense  
Community Cooperation

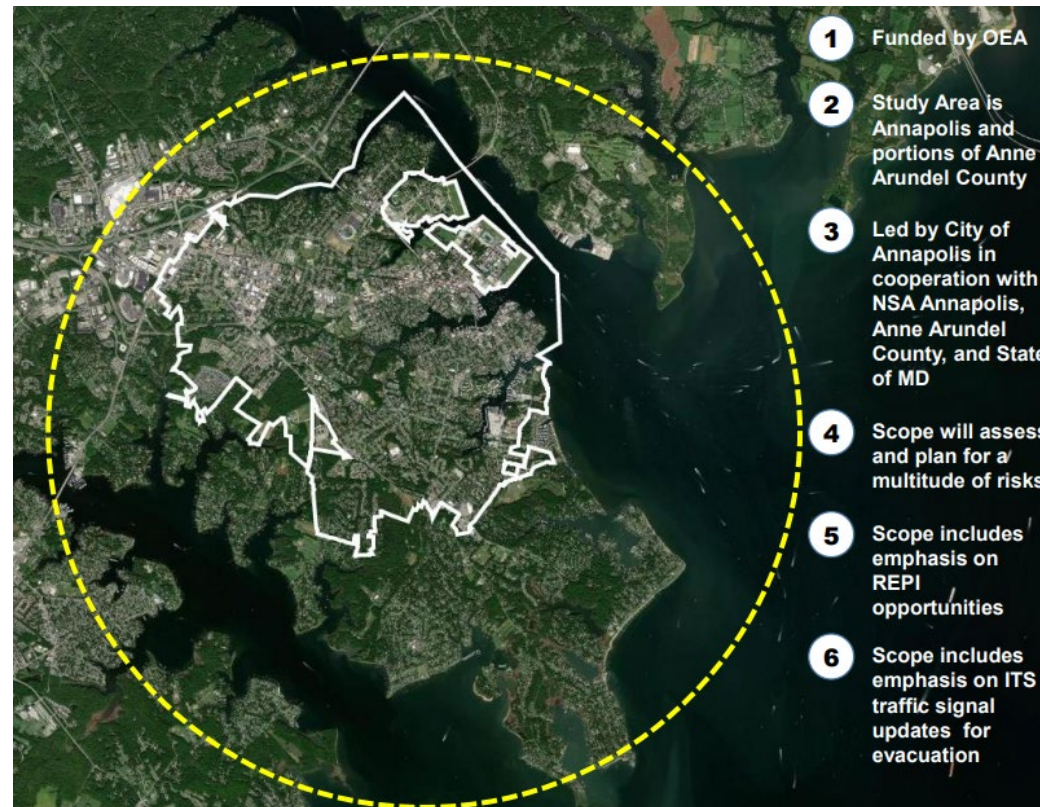


# OLDCC CUP/MIRR Project Examples

## Portsmouth-Chesapeake Joint Land Use Study



## City of Annapolis/NSA Annapolis MIIR





# DoD's REPI Program

- Removes or avoids land-use conflicts near installations and addresses regulatory restrictions that inhibit military activities.
- Uses buffer partnerships among the Military Services, private conservation groups, and state and local governments.
- Shares the cost of acquisition of easements or other interests in land from willing sellers to preserve compatible land uses and natural habitats near installations and ranges that helps sustain critical, at-risk military mission capabilities.
- REPI Challenge – FY22 primary focus is on projects resilient to climate change and severe weather events.



**REPI**

UNITED STATES DEPARTMENT OF DEFENSE  
2021 REPI CHALLENGE RECIPIENTS

## Naval Weapons Station Yorktown Virginia

- Naval Weapons Station (NWS) Yorktown is a premier receipt, storage, segregation, and issue ordnance facility supporting the **Atlantic Fleet and Joint Commands** by facilitating ordnance management, research development, expeditionary warfare training, and industrial and inert storage.
- NWS Yorktown's coastal location makes it vulnerable to **coastal erosion, sea-level rise, and degradation of natural resources.**
- This project represents Phase II of the 2020 REPI Challenge project and will restore about three acres of Navy land by constructing **shoreline protection structures along about 2,000 feet of shoreline** to help prevent erosion. The structures will also serve as artificial oyster reefs contributing to **oyster restoration** efforts and creating shallow water habitat for juvenile fish and crabs. These land conservation and management activities will improve military readiness, training, coastal resilience, and water quality within the unique York River ecosystem.

NOMINATING PARTNER



■ REPI Funds:  
\$2,000,000

■ Partner Contributions:  
\$10,180,000\*

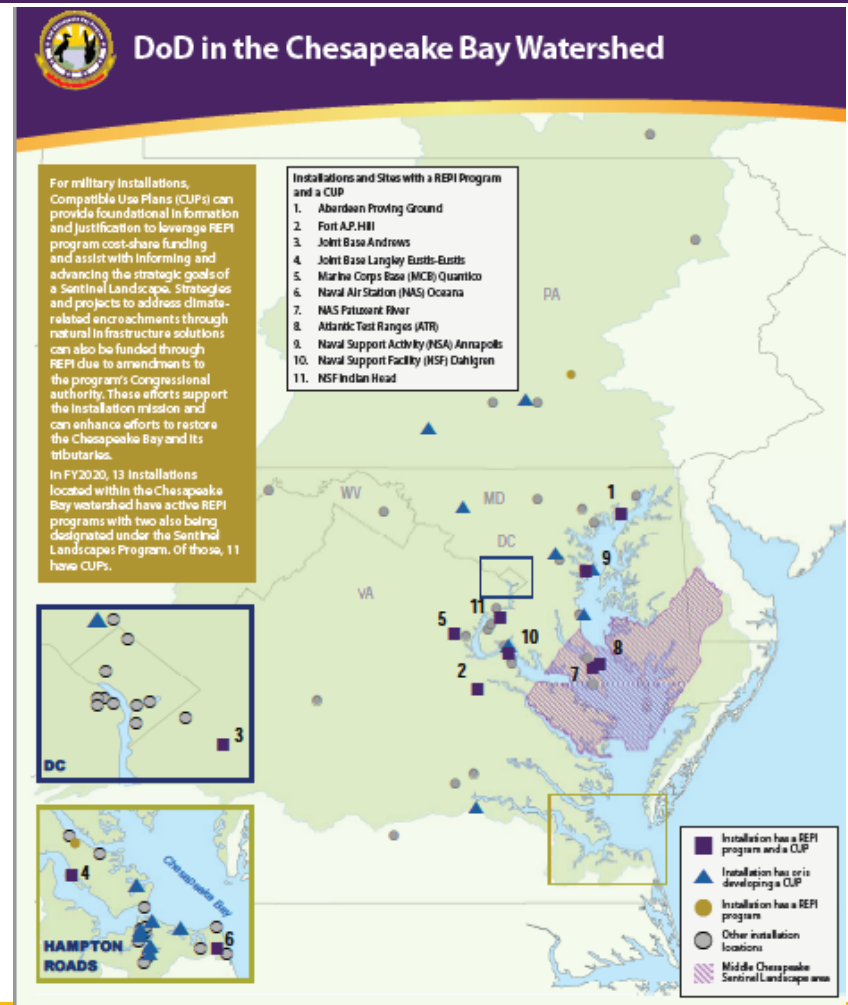
**Total: \$12,180,000**

\*Note: The partner funding for this year's project is a continuation on the FY20 REPI Challenge project and is not counted in the overall totals but is included here for reference.



# REPI Within the Chesapeake Bay

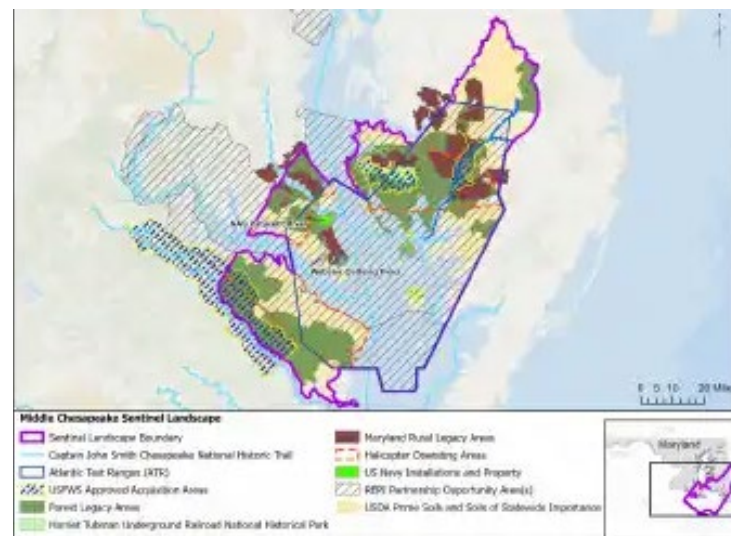
- 13 installations maintain REPI program partnerships.
- Through FY2021:
  - \$77.5 million (M) in REPI program funds have been matched by \$109.6M in partner contributions and \$41.7M in other Military Service Funds.
  - Conserved a total of 45,095 acres of land.



# Sentinel Landscape Partnerships

- Connects private landowners with government assistance programs that fund land protection and natural resource restoration projects.
- REPI funds can be used as the match or cost-sharing requirement for any conservation or resilience program of any federal agency.
- Middle Chesapeake SL is currently the only SL designated in the CB watershed.

## Middle Chesapeake Sentinel Landscape



**Table 1:** Middle Chesapeake Sentinel Landscape Footprint Details (from year established through fiscal year 2020)

Total Protected Acres <sup>1</sup>	51,107
Total Enrolled Acres <sup>2</sup>	203,259
Active Base Area	7,640
<b>Total Sentinel Landscape Area</b>	<b>2,232,563</b>

# OLDCC DCIP

- Designed to address deficiencies in community infrastructure, supportive of a military installation, in order to enhance military value, installation resilience, and military family quality of life.
- Competitive grants issued to states or local govt's, non-profit, and member-owned utility services.
- Must be endorsed by the local installation commander benefiting from the project.
- Eligible projects include any complete and useable:
  - transportation project
  - school
  - hospital
  - police, fire, emergency response, or other community support facility
  - water, wastewater, telecommunications, electric, gas, or other utility project



# OLDCC DCIP

- Important Considerations:
  - 30% matching share is required, with some exceptions.
  - Projects must be construction-ready, all other funding must be secured, and DCIP funding must be the last-in to allow the community to complete the project.
  - Projects must break ground within 1 year, and be completed within 5 years.
  - Projects cannot be located on military installation-owned or leased property.
  - DCIP funds may supplement, but cannot supplant other federal programs.
  - DCIP Program Factsheet:  
<https://oldcc.gov/sites/default/files/DCIP/2021-11-16%20DCIP%20FACT%20SHEET%20FINAL.pdf>

# Key Takeaways

- DoD is a willing partner in the Chesapeake Bay watershed.
- DoD resources exist to support joint collaborative planning and project implementation with communities and interested stakeholders that support the military mission.
- Collaborative planning and project identification and prioritization efforts under CUPs/MIRR's can be used to support project implementation funding through the REPI and DCIP programs.

# For More Information

## **DoD Chesapeake Bay Program:**

<https://www.denix.osd.mil/chesapeake/home/>

## **OLDCC Military Installation Sustainability Program:**

<https://oldcc.gov/our-programs/military-installation-sustainability>

## **Readiness and Environmental Protection Integration Program:**

<https://www.repi.mil/>

## **Sentinel Landscapes Partnership:**

<https://sentinellandscapes.org/>

## **OLDCC Defense Community Infrastructure Program (DCIP)**

## **Advancing Resilience for Defense Communities - Association of Defense Communities (non-DoD resource)**

<https://defensecommunities.org/wp-content/uploads/2021/07/Advancing-Resilience-for-Defense-Communities-A-Planning-Framework.pdf>





# Questions?

Contact Information:

Jessica Rodriguez, DoD CBP

[jessica.m.rodriguez133.civ@us.navy.mil](mailto:jessica.m.rodriguez133.civ@us.navy.mil)

Kevin Du Bois, DoD CBP

[kevin.r.dubois.civ@us.navy.mil](mailto:kevin.r.dubois.civ@us.navy.mil)



Fort Detrick (MD) stream restoration project



Naval Medical Center Portsmouth (VA) pollinator garden planting



Naval Support Activity – Hampton Roads (VA) installing oyster castles along their shoreline