



# GLT project and CAP WG meeting debrief

Chesapeake Bay Program Hypoxia Collaborative  
Meeting

September 24, 2025

Virtual, Chesapeake Bay Program Office

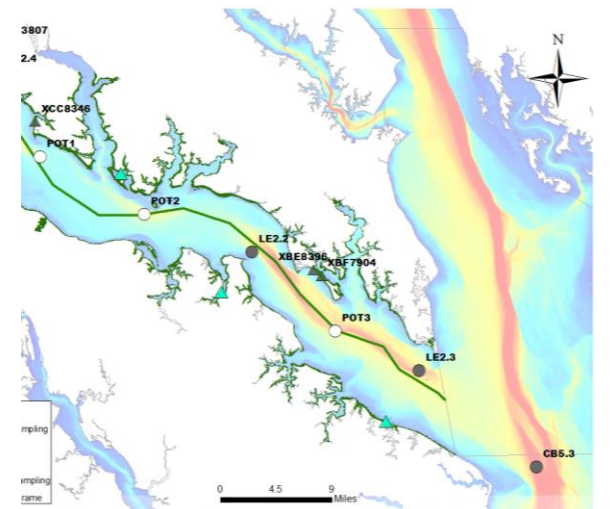
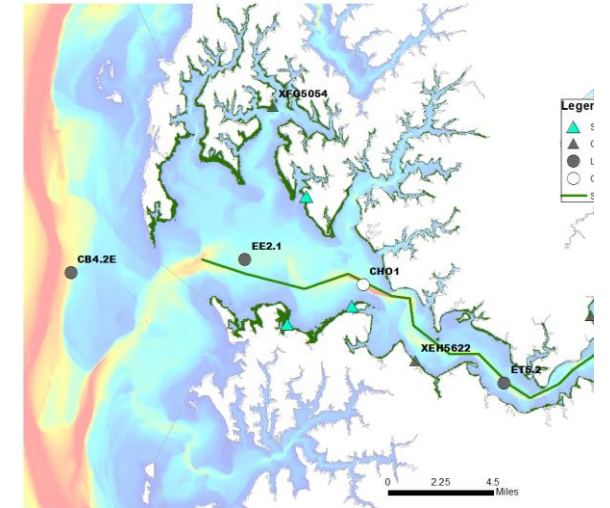
Dong Liang, Jeremy Testa, Lora Harris, Walter Boynton

# Objectives

An evaluation of the values (changes in uncertainty) of placing new arrays in a segment to help with habitat characterization.

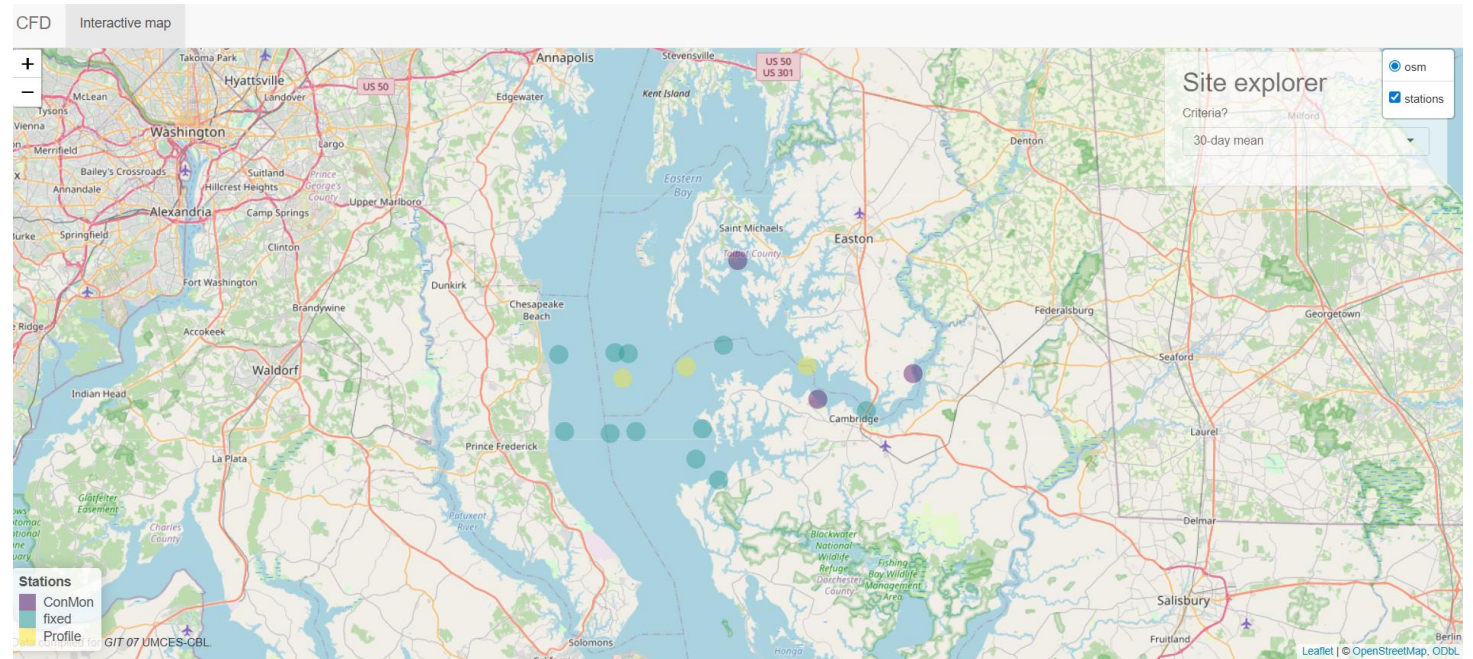
# Segment selection

- Segments with open, deep, and deep channel habitats are the target zone.
  - Focus on 10 segments that include Deep Water and Deep channel habitat as our target.
- A tentative list is Fishing Bay, Choptank, lower Potomac, Patapsco, CB4, Patuxent mesohaline, Rappahannock mesohaline, and York polyhaline.



# Model exploration

- Monitoring assets deployed in the near shore (1-3 arrays) and offshore regions (1-6 continuous monitoring).



# More considerations

- Different combinations of depths of sensors on arrays
- Sampling at long-term sites (weekly sampling) effects on habitat assessment.
- Evaluate the potential for computation of the 7-day mean and 1-day mean.

# Other ideas

- Consideration of less monitoring