

# Management strategy evaluation to assess trade-offs associated with invasive Blue Catfish fisheries and predation impacts

Corbin D. Hilling<sup>1</sup>, Yan Jiao<sup>2</sup>, Joseph D. Schmitt<sup>1</sup>,  
Mary C. Fabrizio<sup>3</sup>, Paul L. Angermeier<sup>4,2</sup>, Donald J.  
Orth<sup>2</sup>

<sup>1</sup> U.S. Geological Survey Great Lakes Science Center

<sup>2</sup> Virginia Tech Department of Fish and Wildlife  
Conservation

<sup>3</sup> Virginia Institute of Marine Science, William & Mary

<sup>4</sup> U.S. Geological Survey Virginia Cooperative Research

Available Open Access at <https://doi.org/10.1093/mcfafs/vtaf004>



# Blue Catfish Complexities



Native  
Conservation



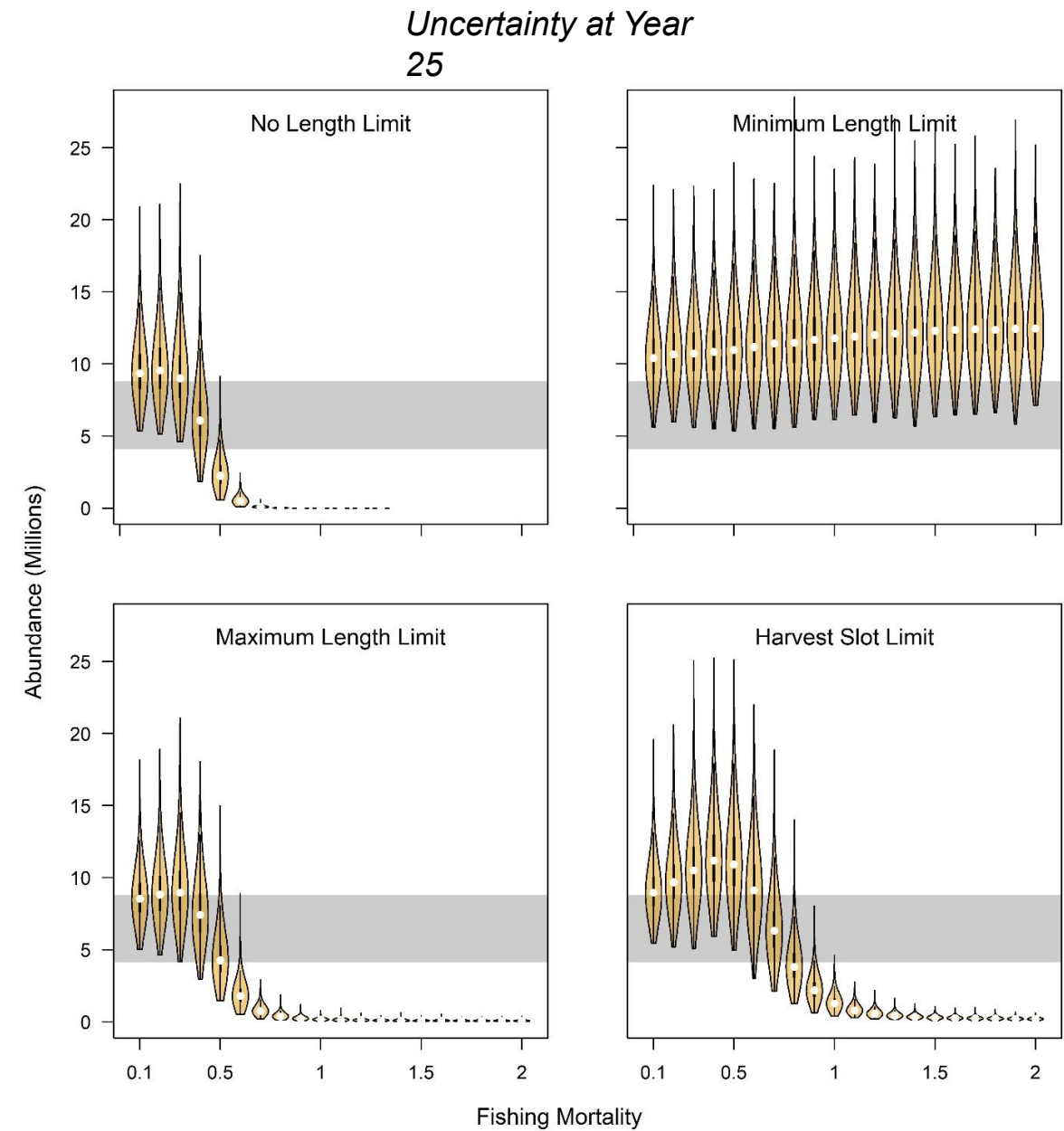
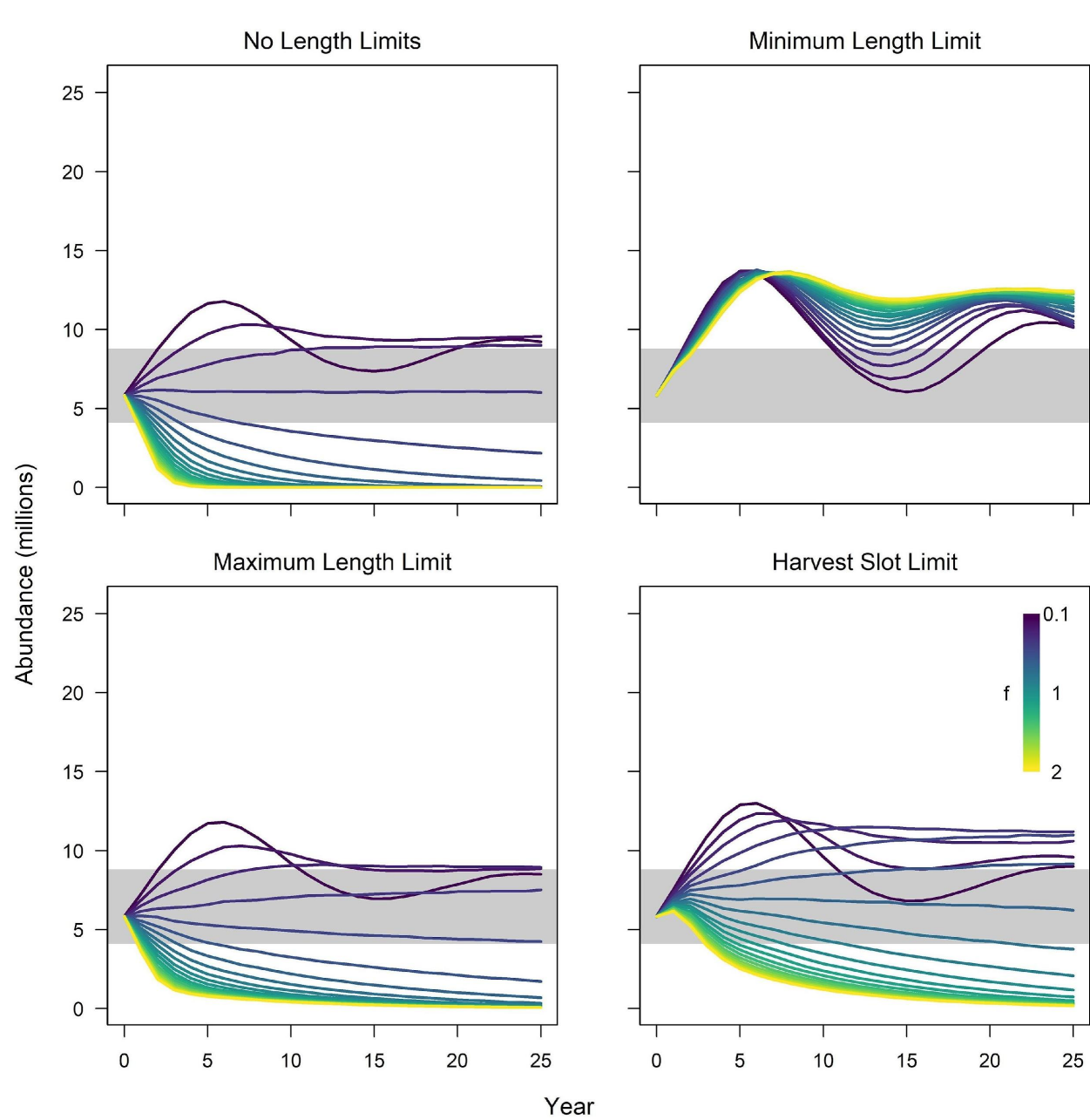
Recreational  
Fisheries



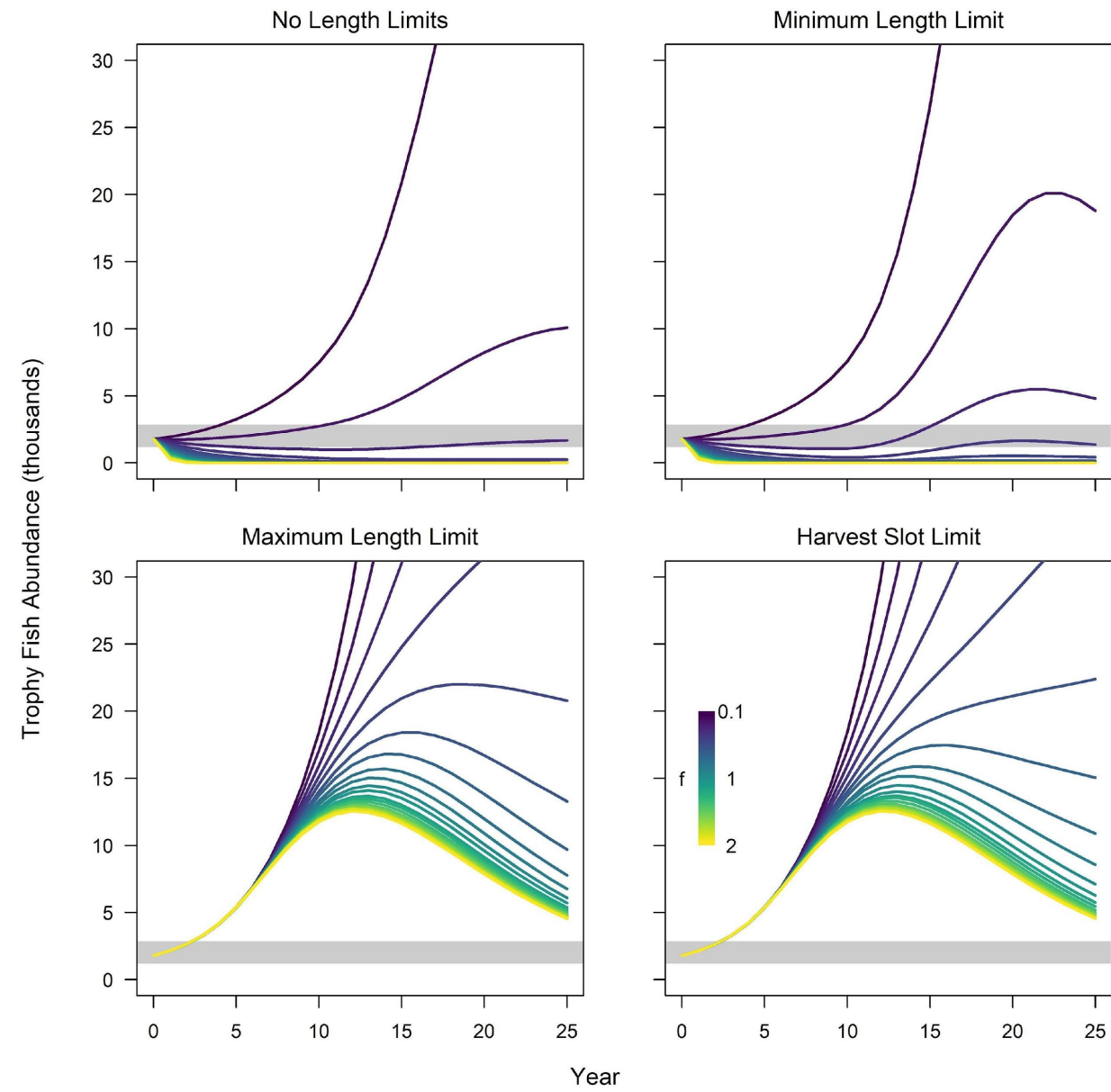
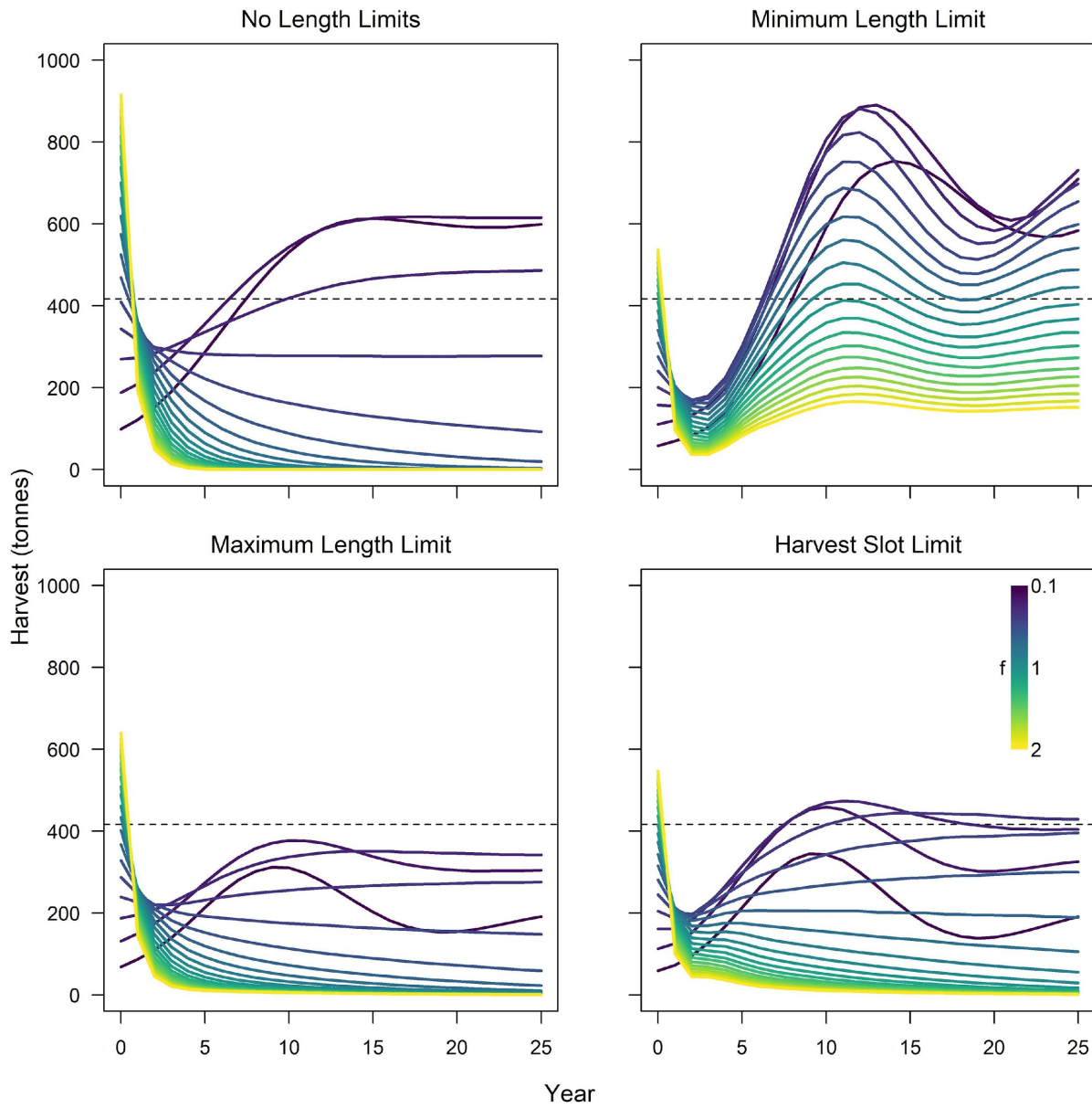
Commercial  
Fisheries

Image Credits: American Eel (USFWS), Trophy Blue Catfish (J. Eddy), Blue Catfish Harvesters (C. Lillian)

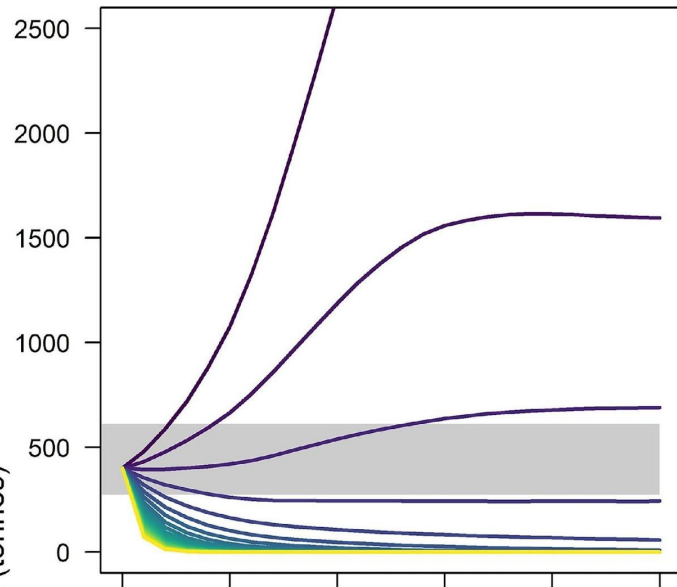




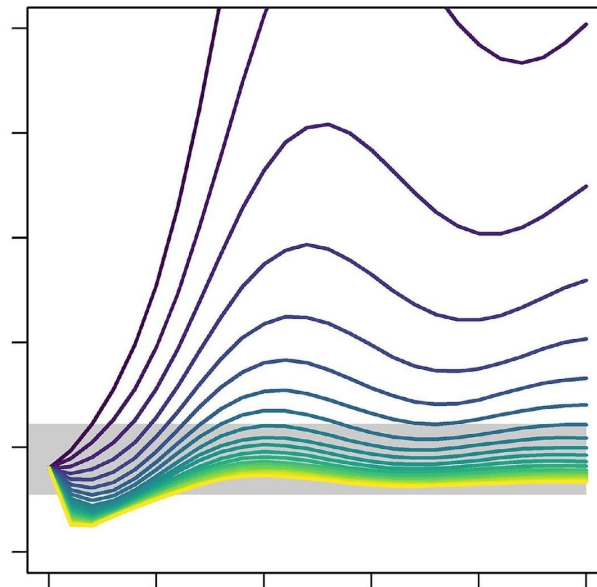




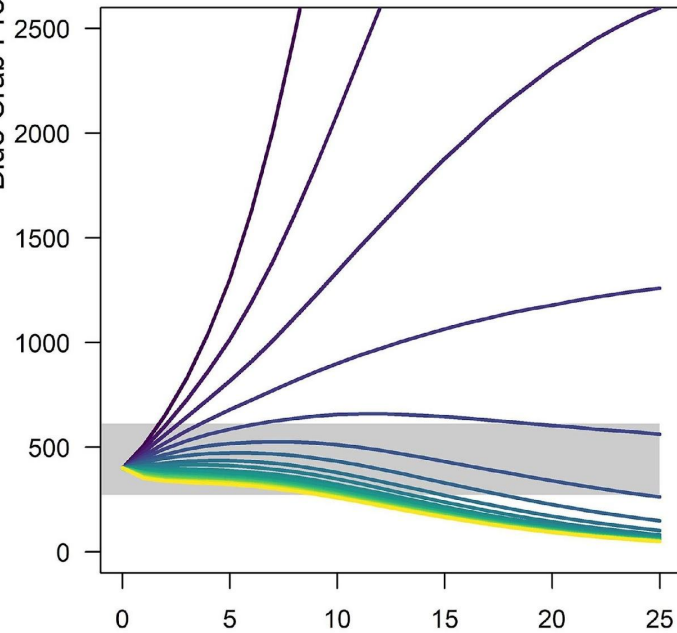
No Length Limits



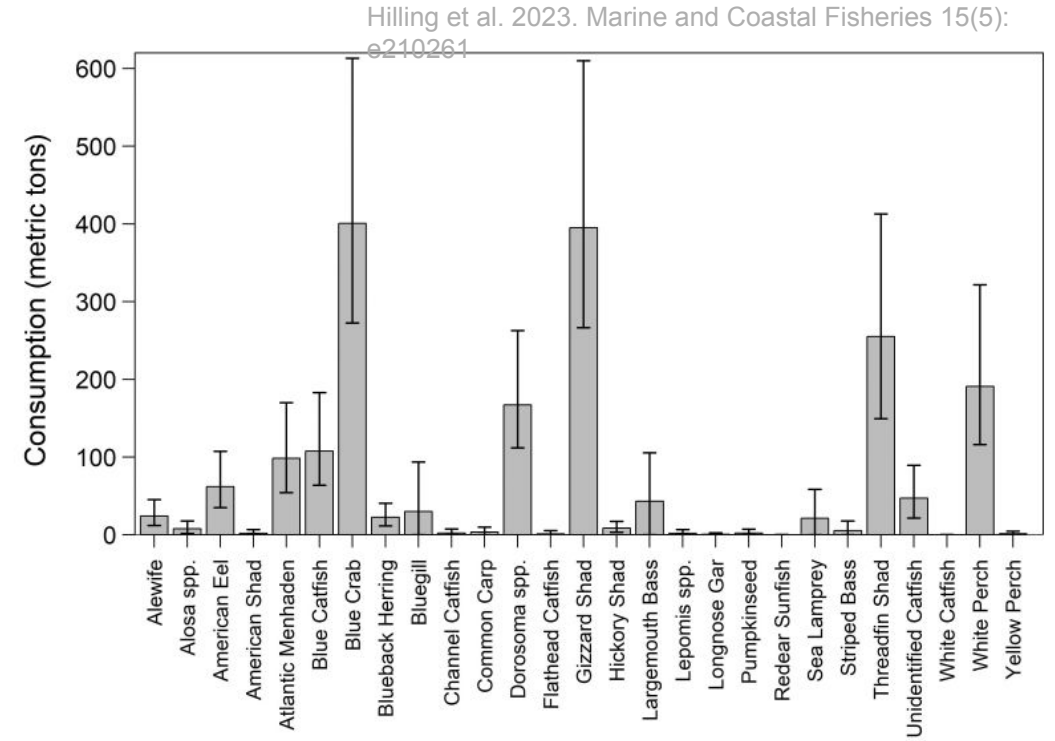
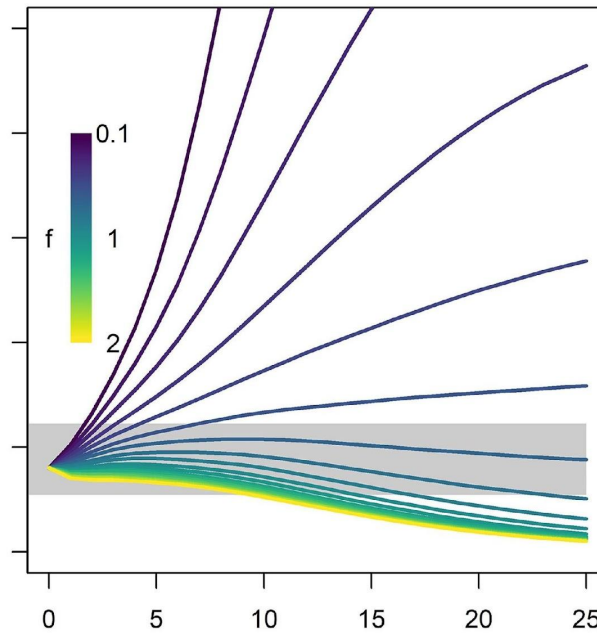
Minimum Length Limit



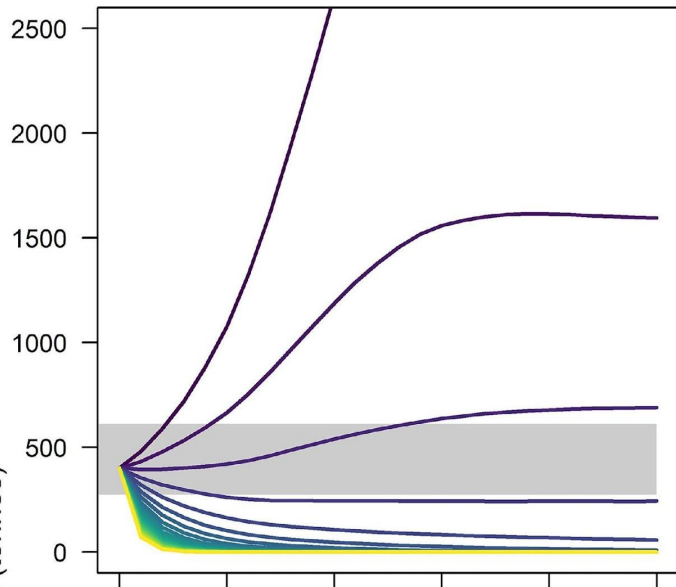
Maximum Length Limit



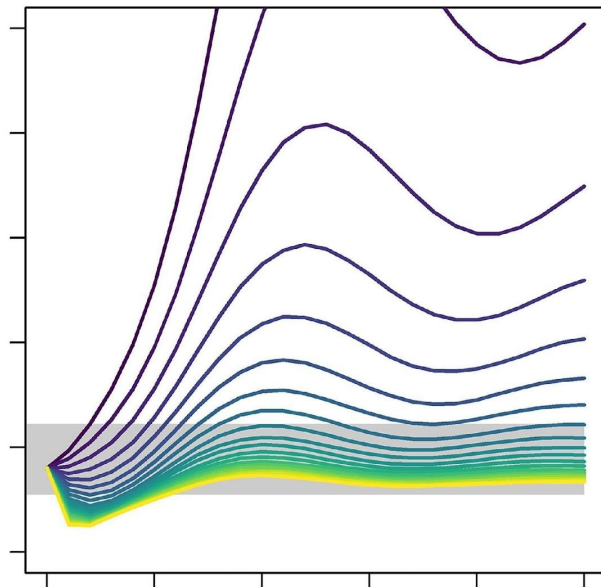
Harvest Slot Limit



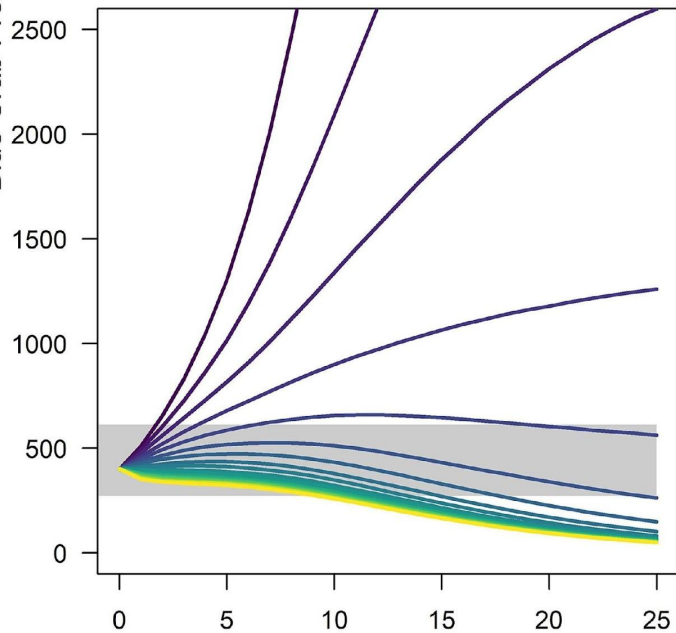
No Length Limits



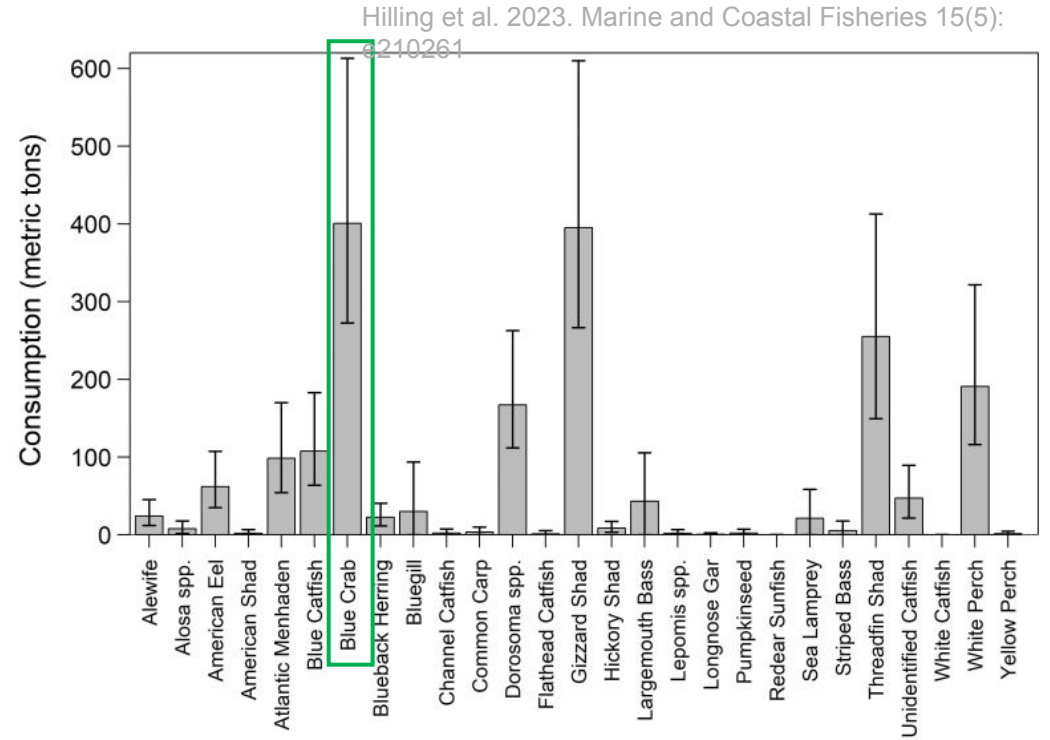
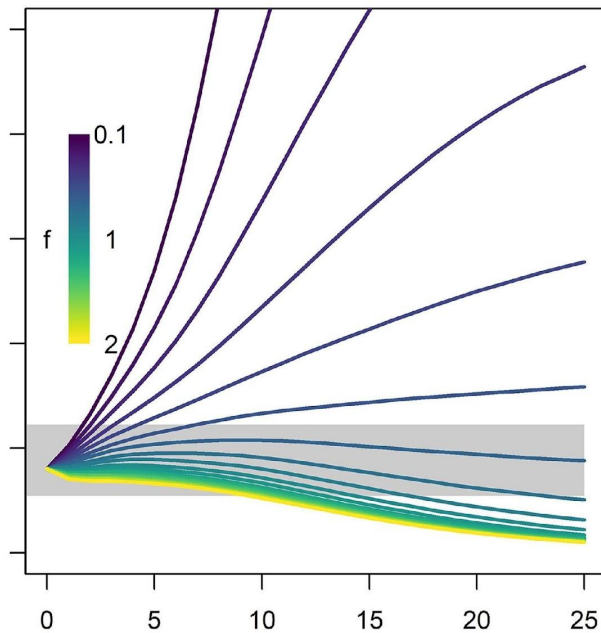
Minimum Length Limit

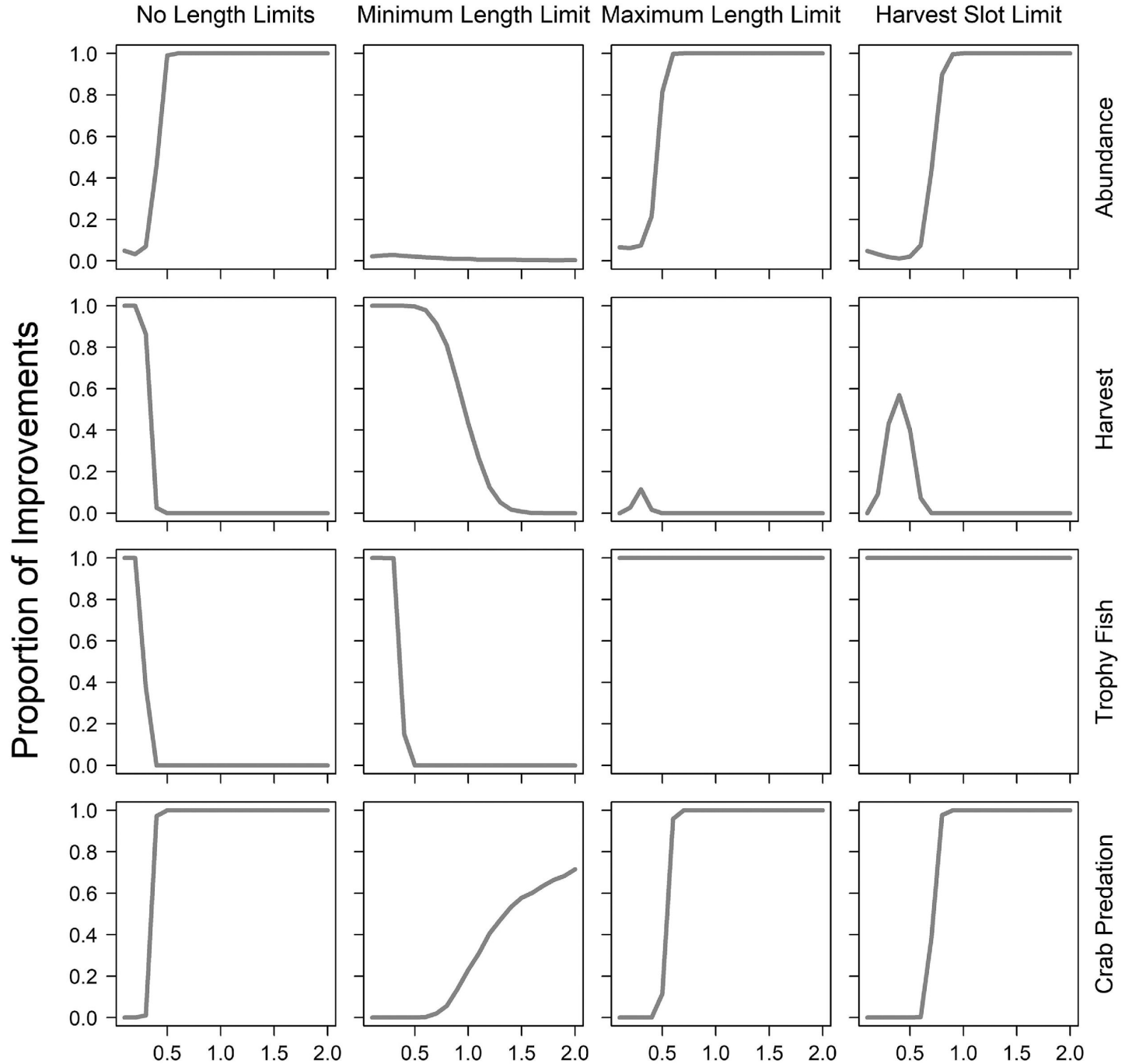


Maximum Length Limit

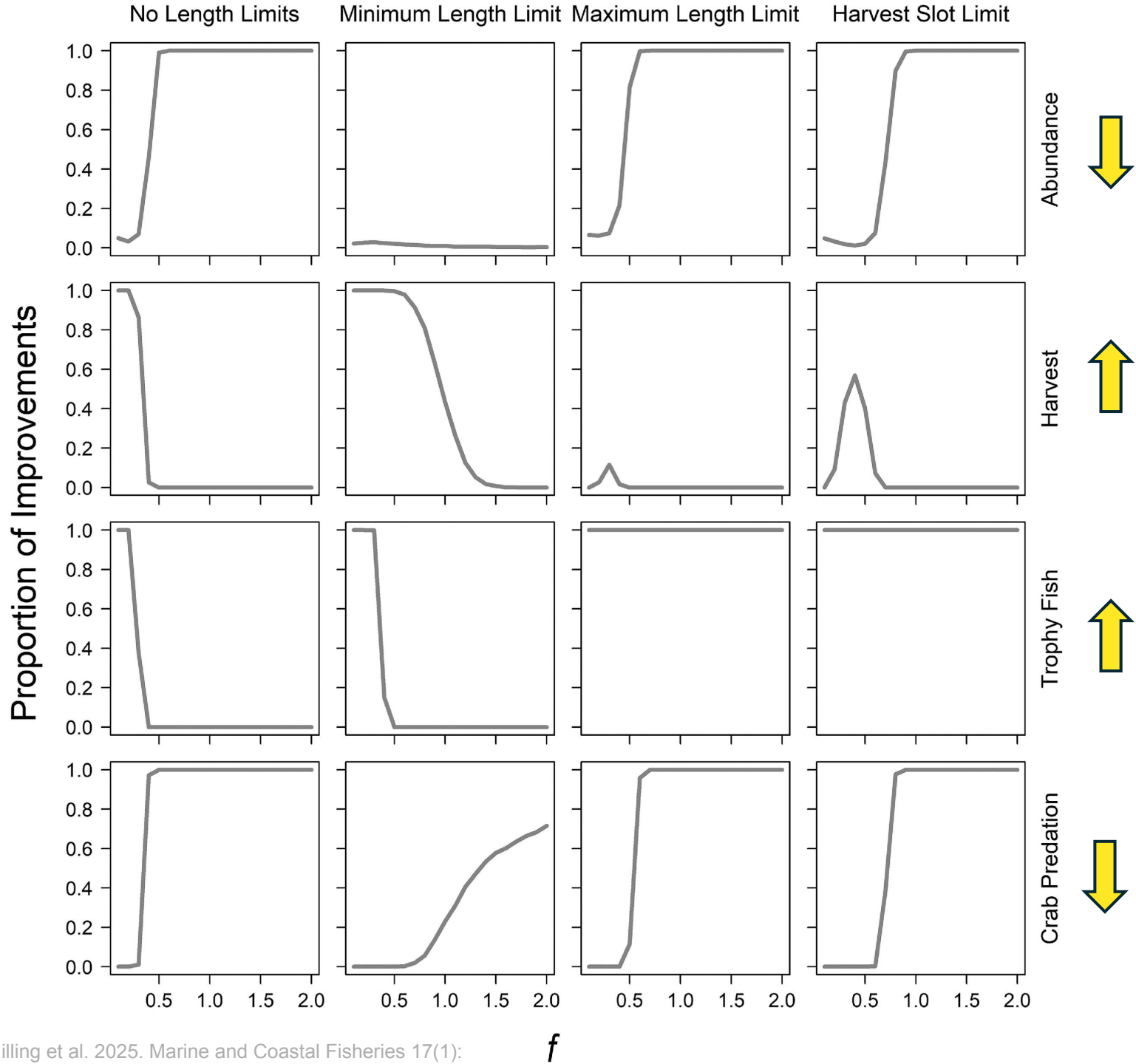


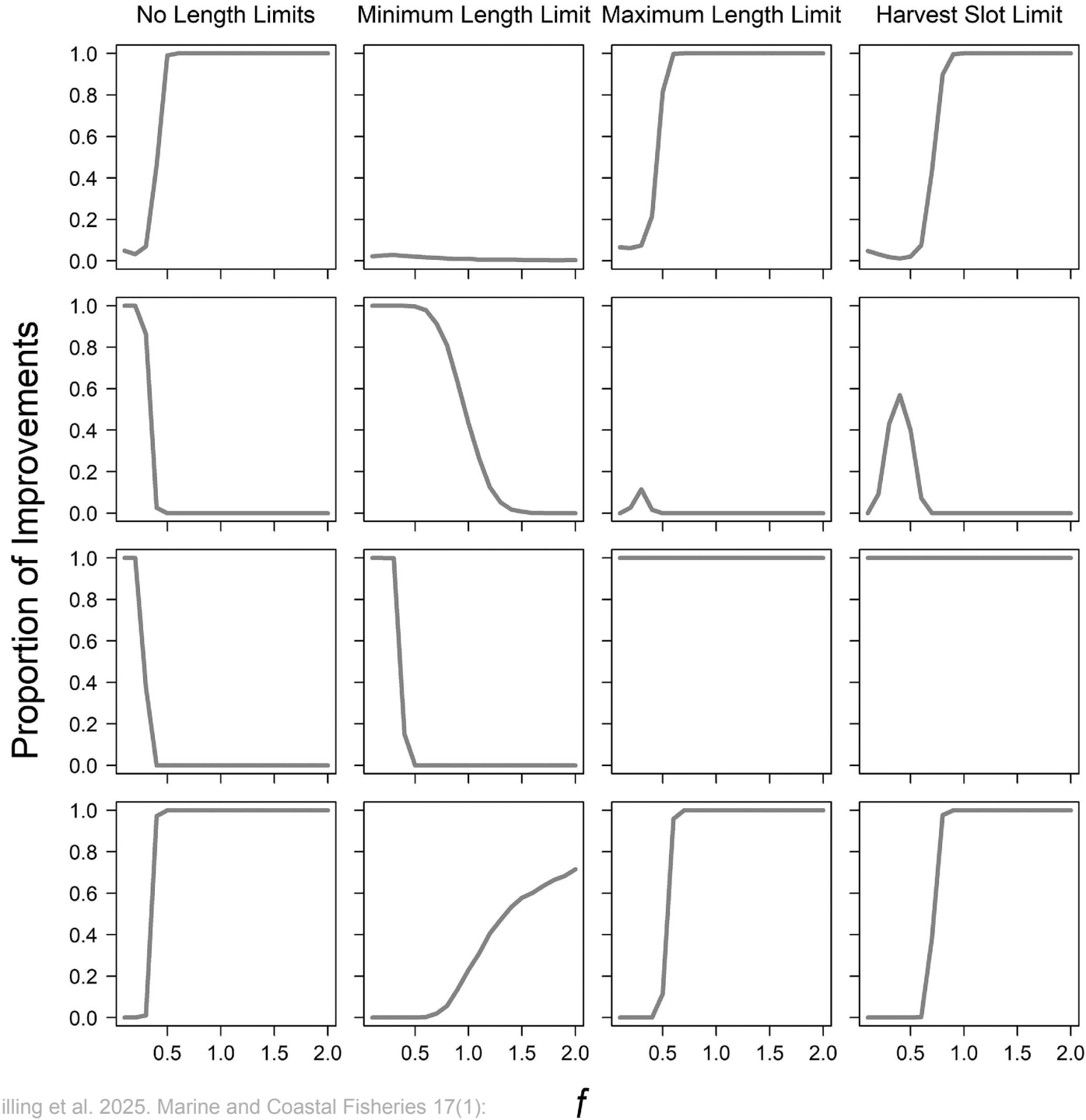
Harvest Slot Limit











Abundance



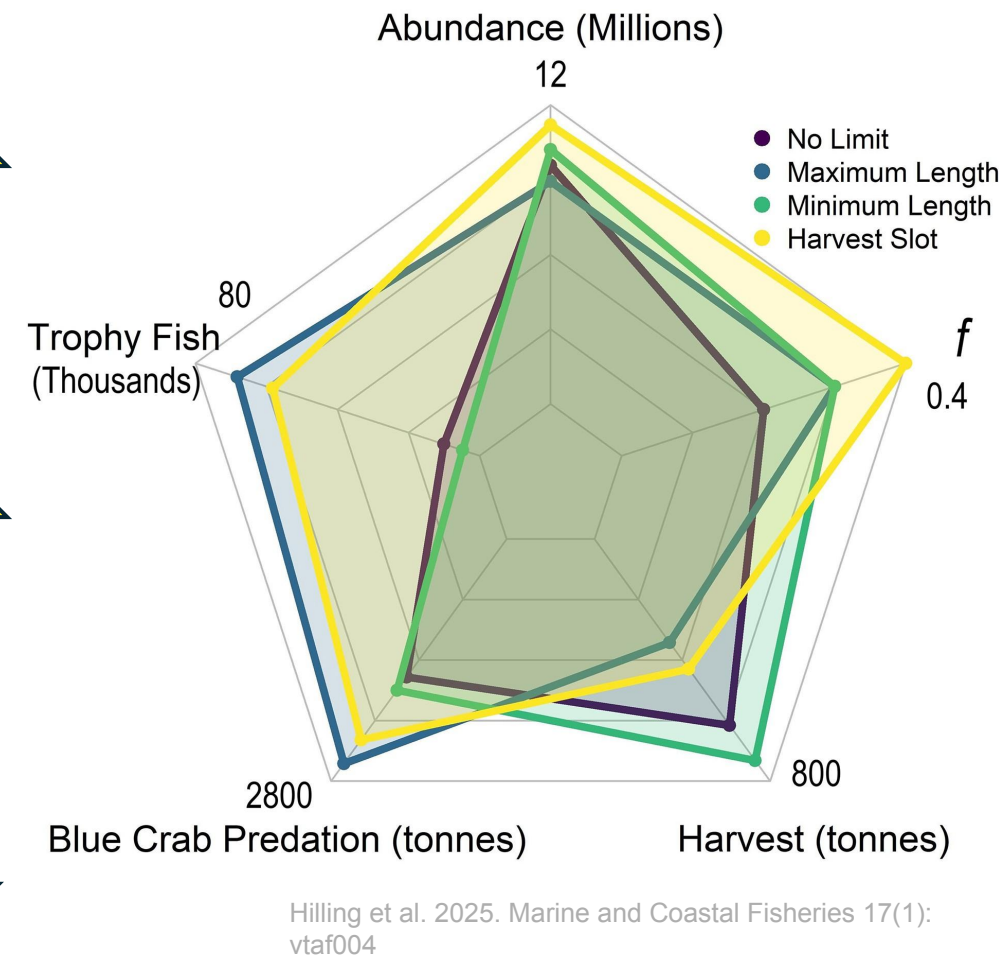
Harvest



Trophy Fish



Crab Predation



# Conclusions

- Balancing fisheries and predation may be challenging
- Harvest of small fish may be important to reduce abundance
- Protection of large fish aided trophy fisheries
- Yield-crab tradeoffs evident
- Caveats
  - Could not assess crab responses
  - Density-dependence only modeled through recruitment
    - Density-dependent growth not included
  - Crabs are only one prey species





CONSERVE. CONNECT. PROTECT.



VIRGINIA INSTITUTE OF MARINE SCIENCE



Corbin Hilling

Email:

chilling@usgs.gov

*Marine and Coastal Fisheries*, 2025, 17, vtaf004  
<https://doi.org/10.1093/mcfafs/vtaf004>  
Advance access publication: April 1, 2025  
Article



Management strategy evaluation to assess  
trade-offs associated with invasive Blue Catfish fisheries  
and predation impacts

Corbin D. Hilling<sup>1,2,\*</sup>, Yan Jiao<sup>1</sup>, Joseph D. Schmitt<sup>1,2</sup>, Mary C. Fabrizio<sup>3</sup>,  
Paul L. Angermeier<sup>1,4</sup>, and Donald J. Orth<sup>1</sup>

