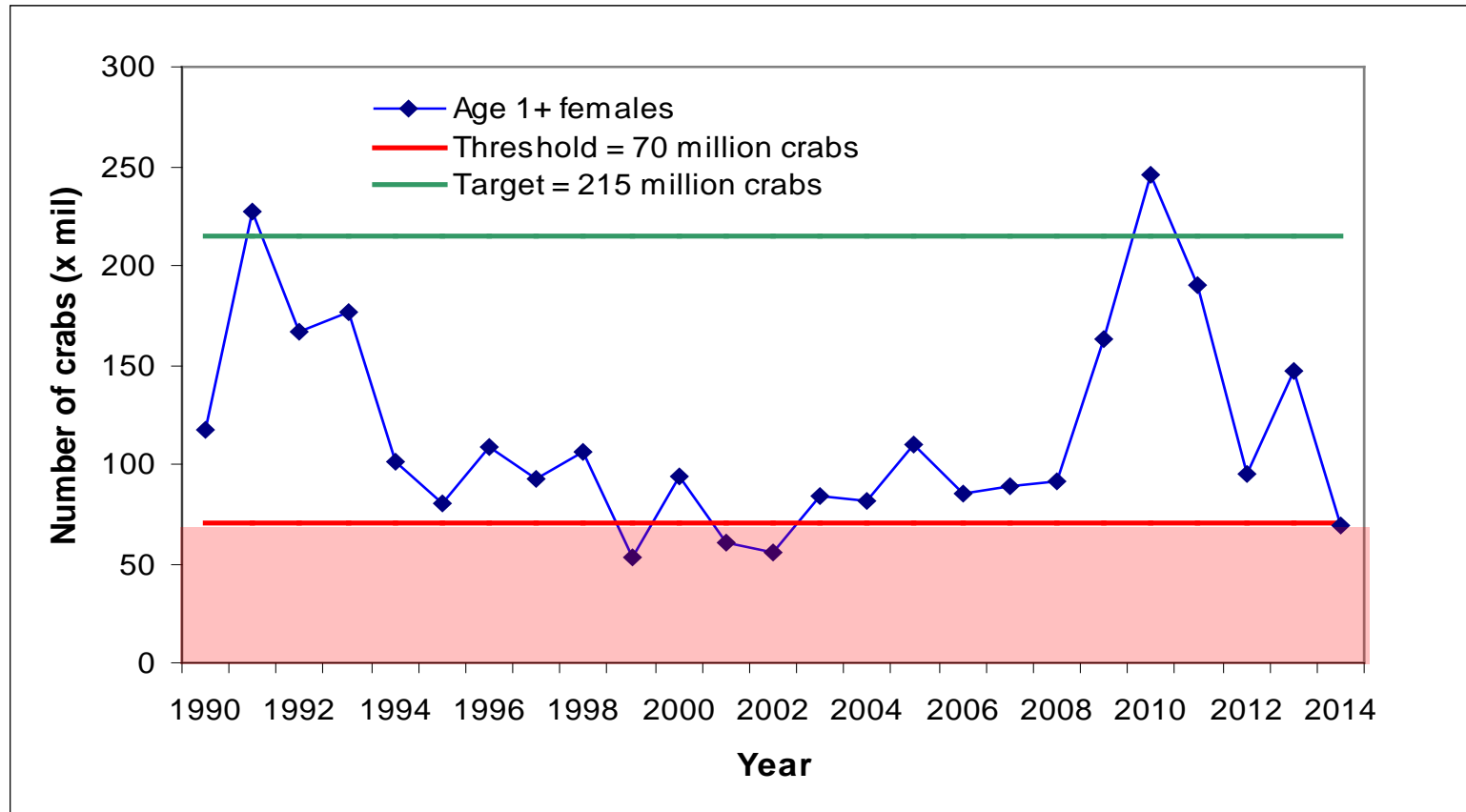


2014 Blue Crab Stock Status

Fisheries GIT

WDS & VIMS Trawl Survey

Abundance of female blue crabs age 1+ 1990-2014



VIMS Trawl Survey

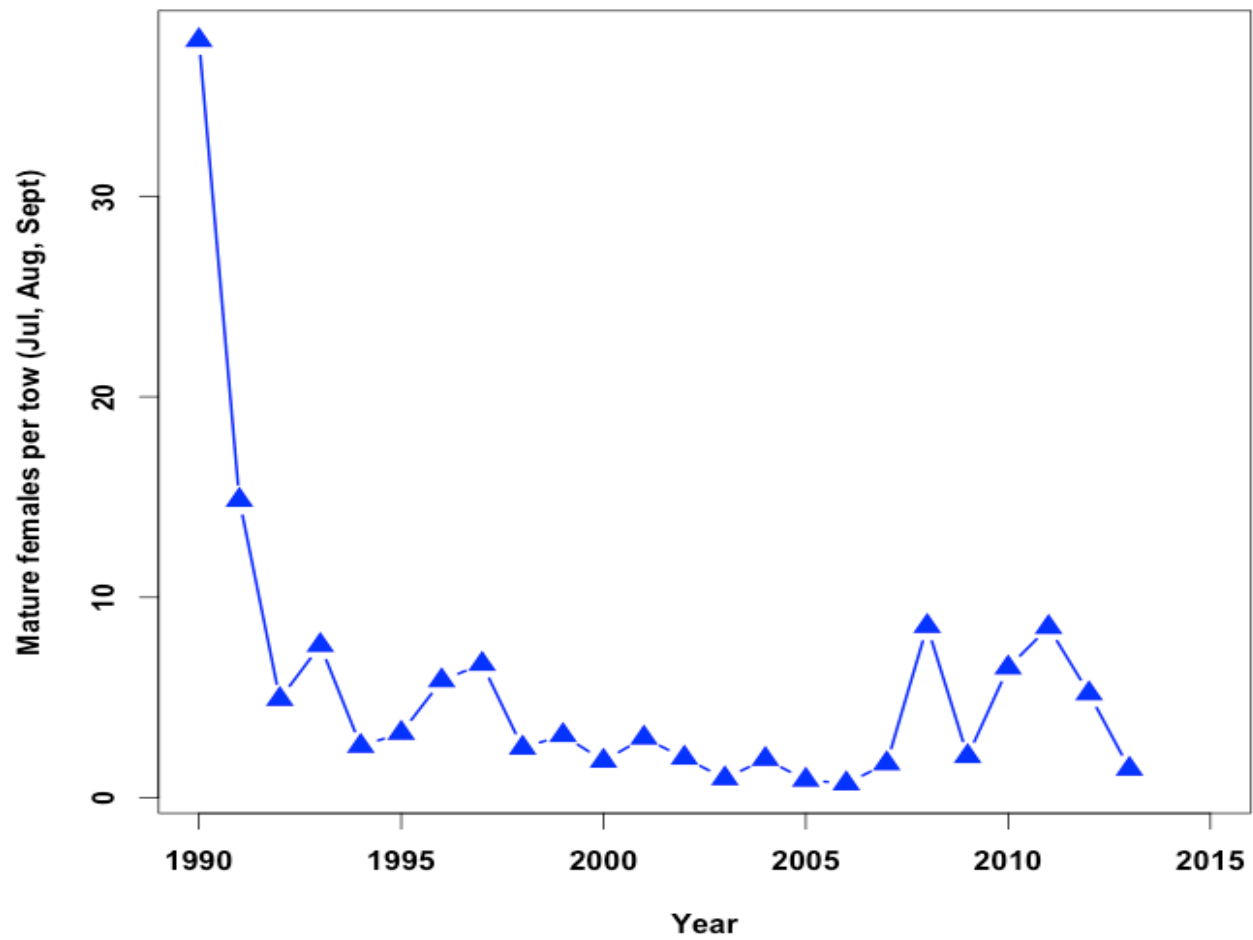
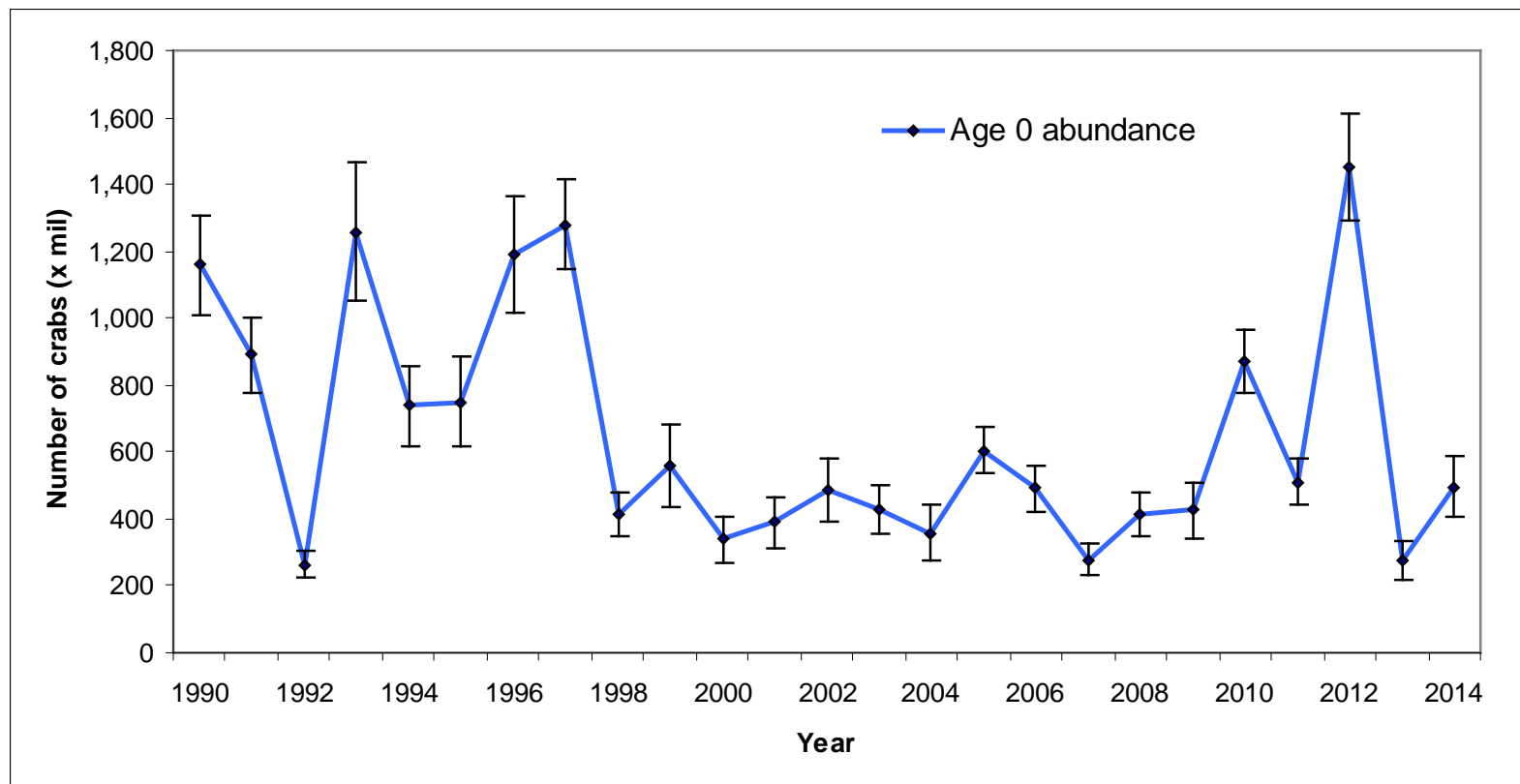
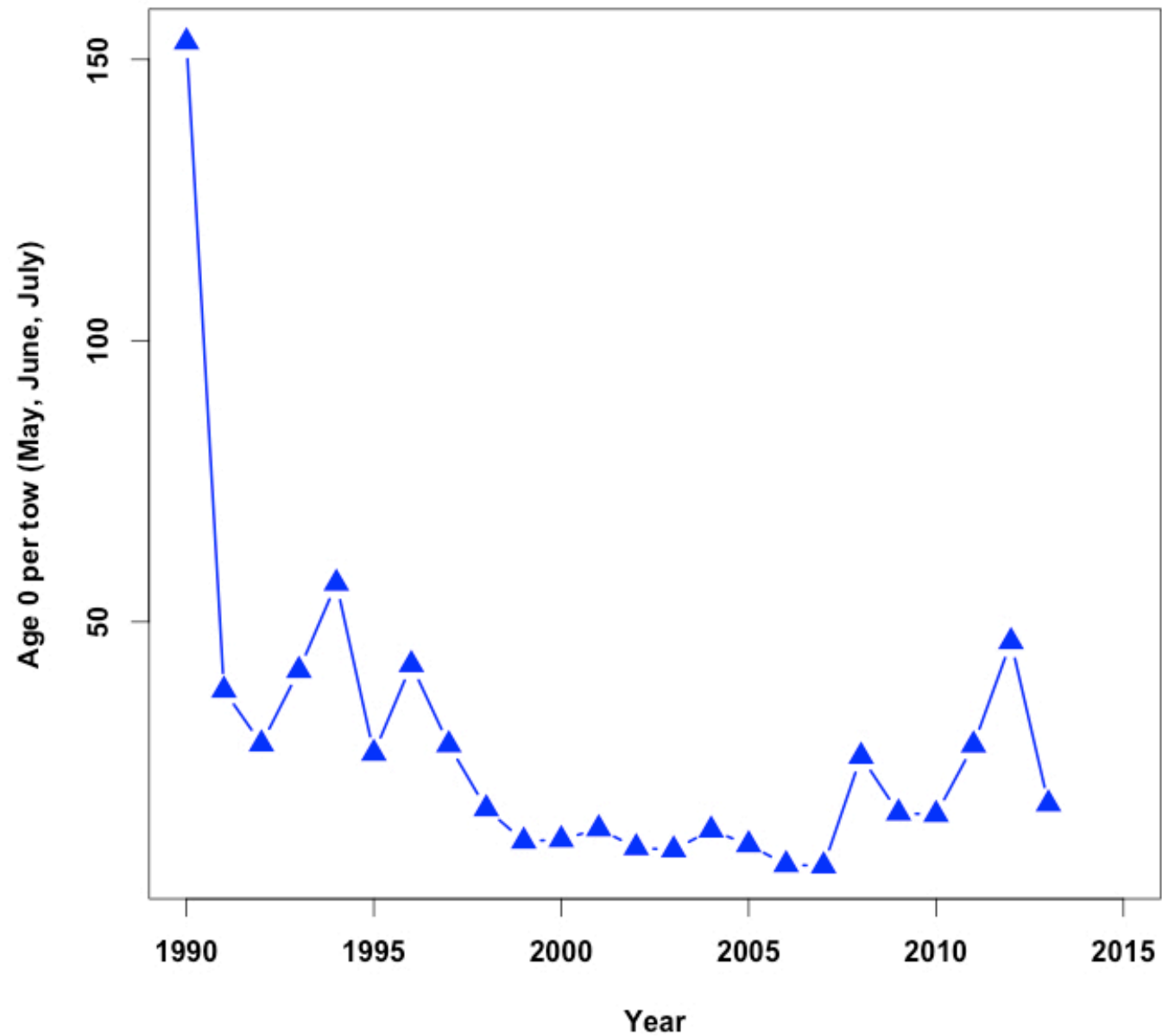


Figure 5. Winter dredge survey estimate of **abundance of juvenile blue crabs (age 0)**, 1990-2014. These are male and female crabs measuring less than 60mm across the carapace. Error bars represent 95% confidence intervals.



Abundance calculated using catchability adjustment.

VIMS Trawl Survey



Bycatch Mortality

