

Final Phase 6 Land Use Database Project Plan

April 6, 2016

**Fred Irani
US Geological Survey
Eastern Geographic Science Center**

Phase 6 LU Production Objectives

- Discuss Land Use Process
- USGS Process Development Status
- Overall Schedule Completion Estimate

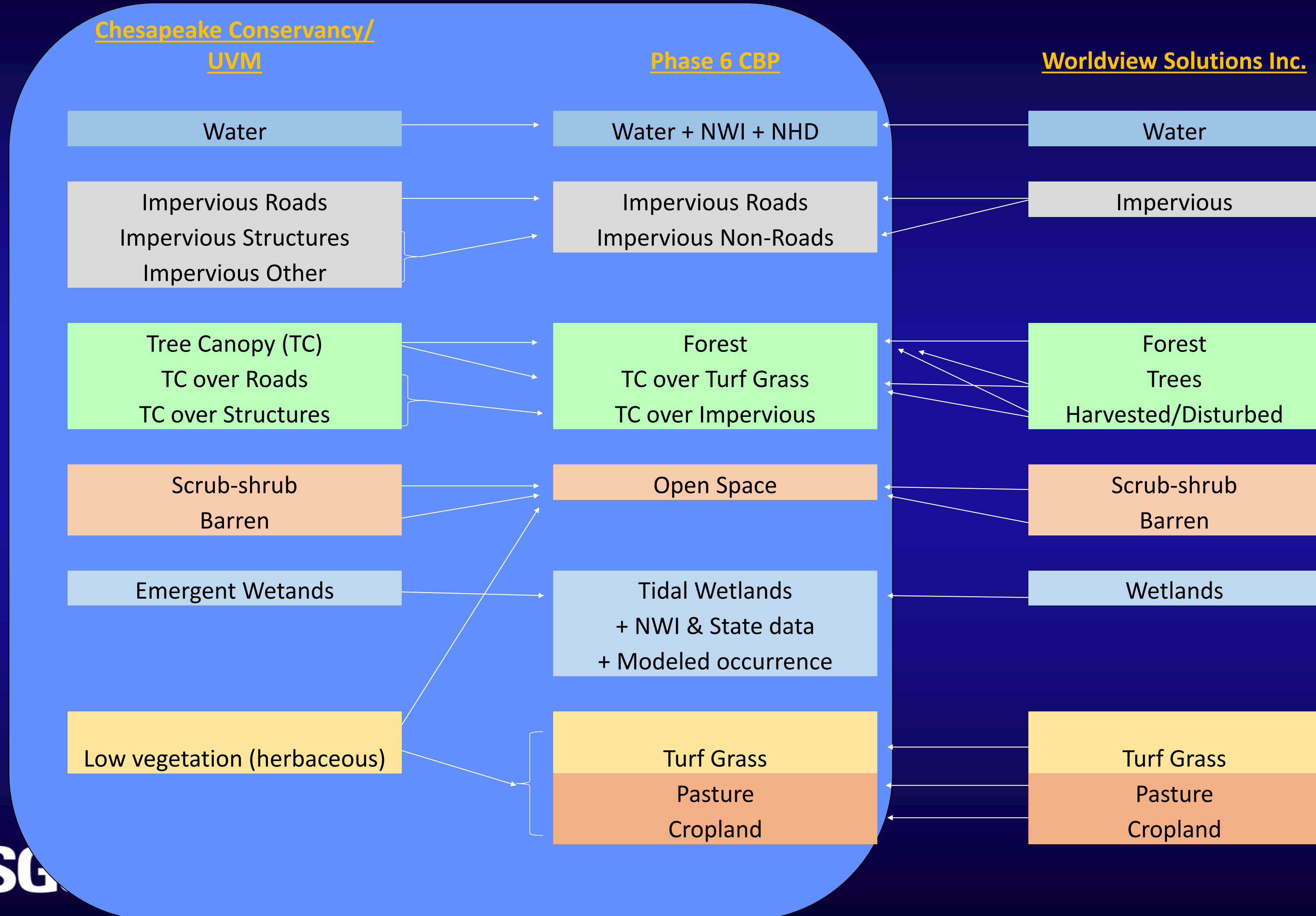
High Resolution LU Process

- Dec '15 – ~~March~~ End April '16 Automate Steps to:
 - Identify 13 Classes:
 - Impervious Road, Impervious Non-Road
 - Tree Canopy over Impervious, Tree Canopy over Turf Grass
 - Turf Grass
 - Forest
 - Mixed Open
 - Pasture, Crop
 - Tidal Wetlands, Floodplain Wetlands, Other Wetlands
 - Water

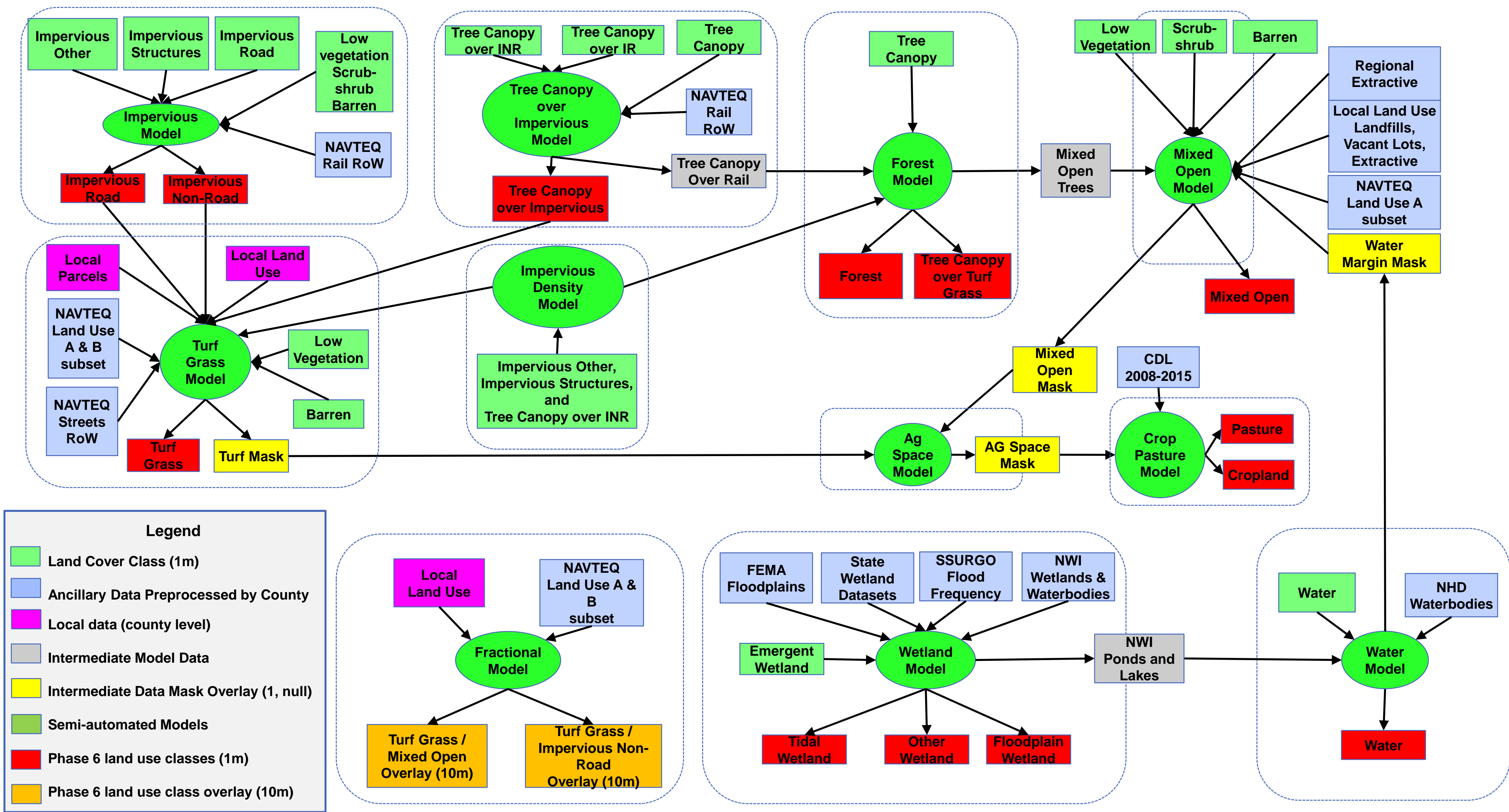
High Resolution LU Process

- Dec '15 – ~~March~~ End April '16 Automate Steps to:
 - Burn in Wetlands
 - Aggregate Individual Classes to 10m Resolution
 - Add Tree Canopy to Virginia (August)
 - Add PA Wetland Data to PA (August)

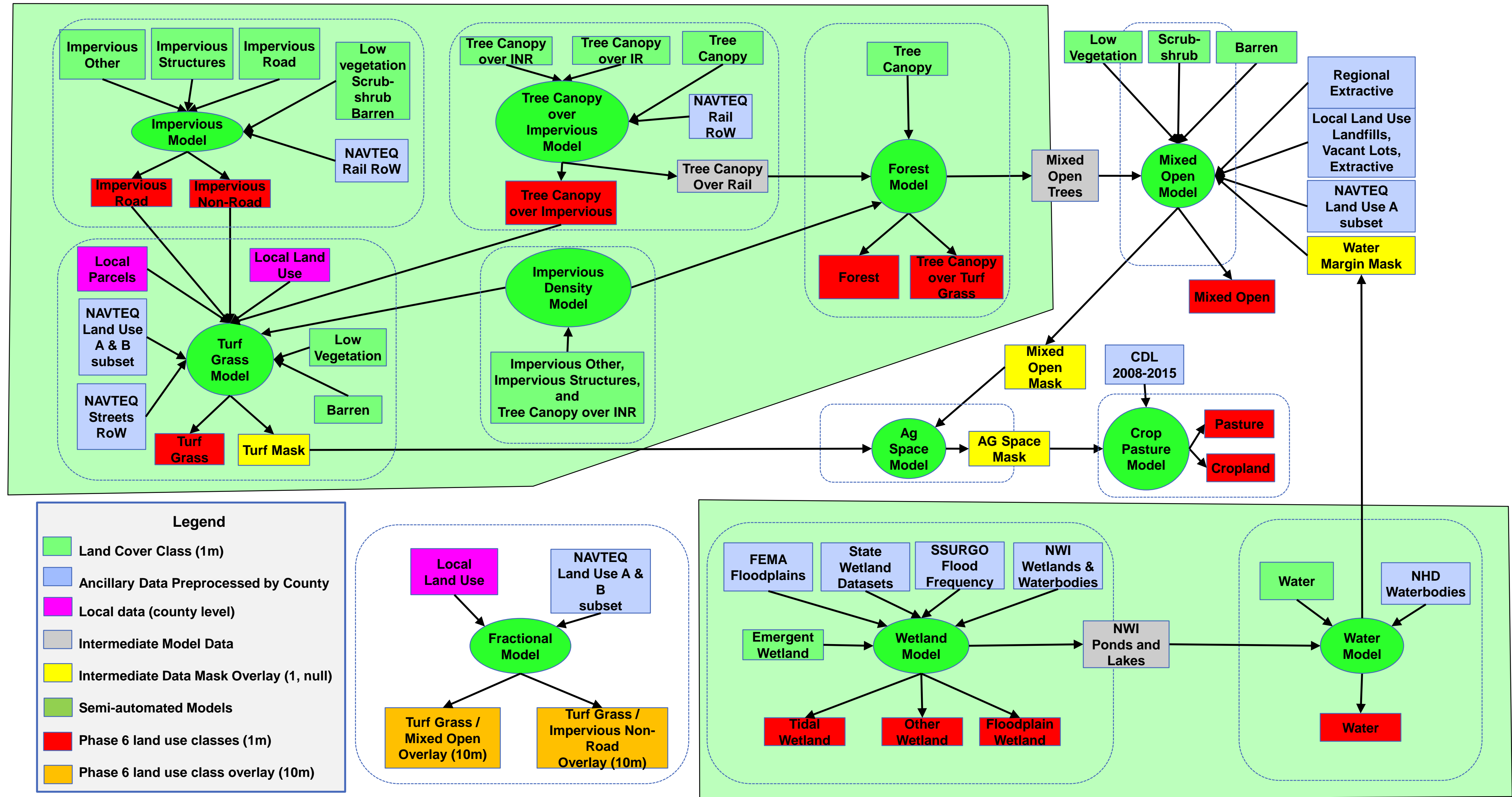
March Data Cross walk



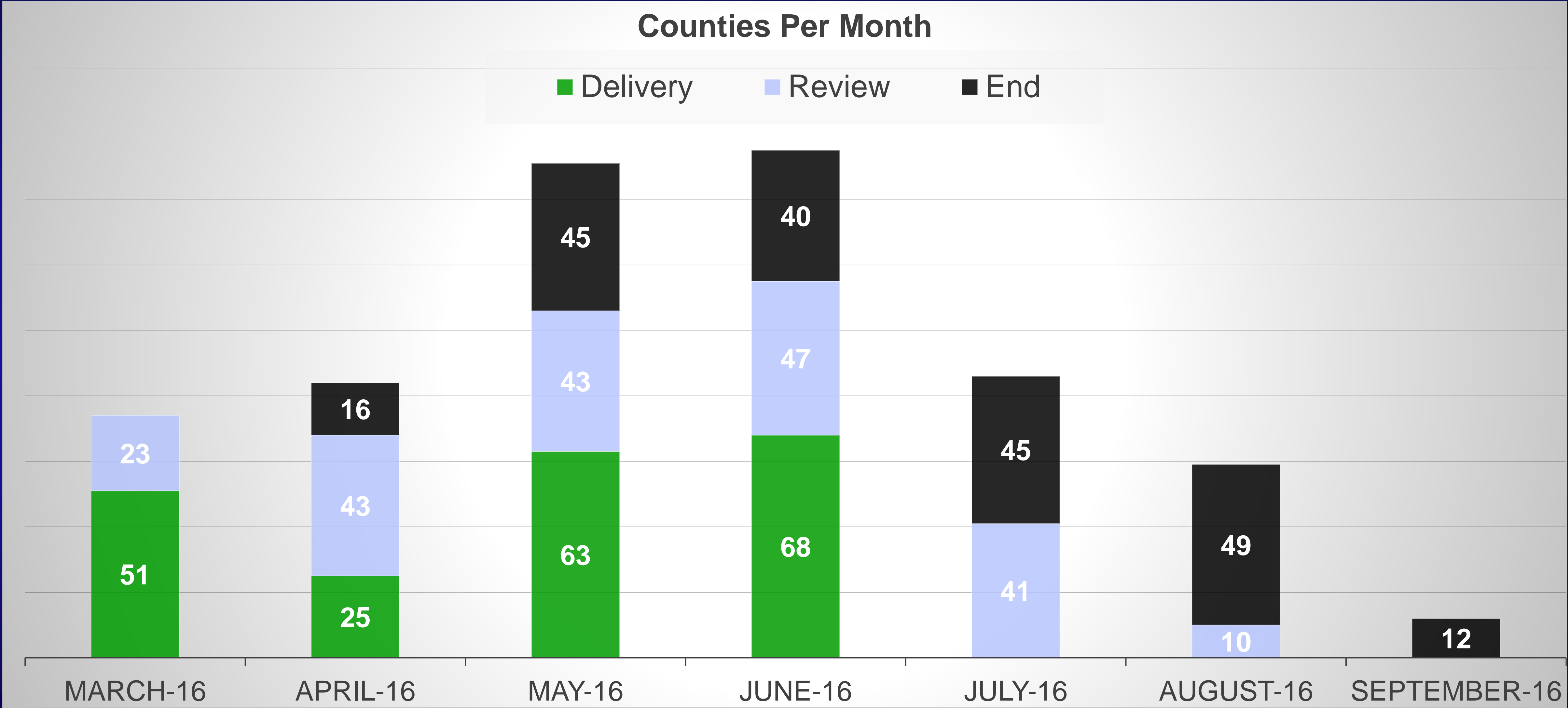
Phase 6 Land Use Development Process 033015



Phase 6 Land Use Development Process 033015

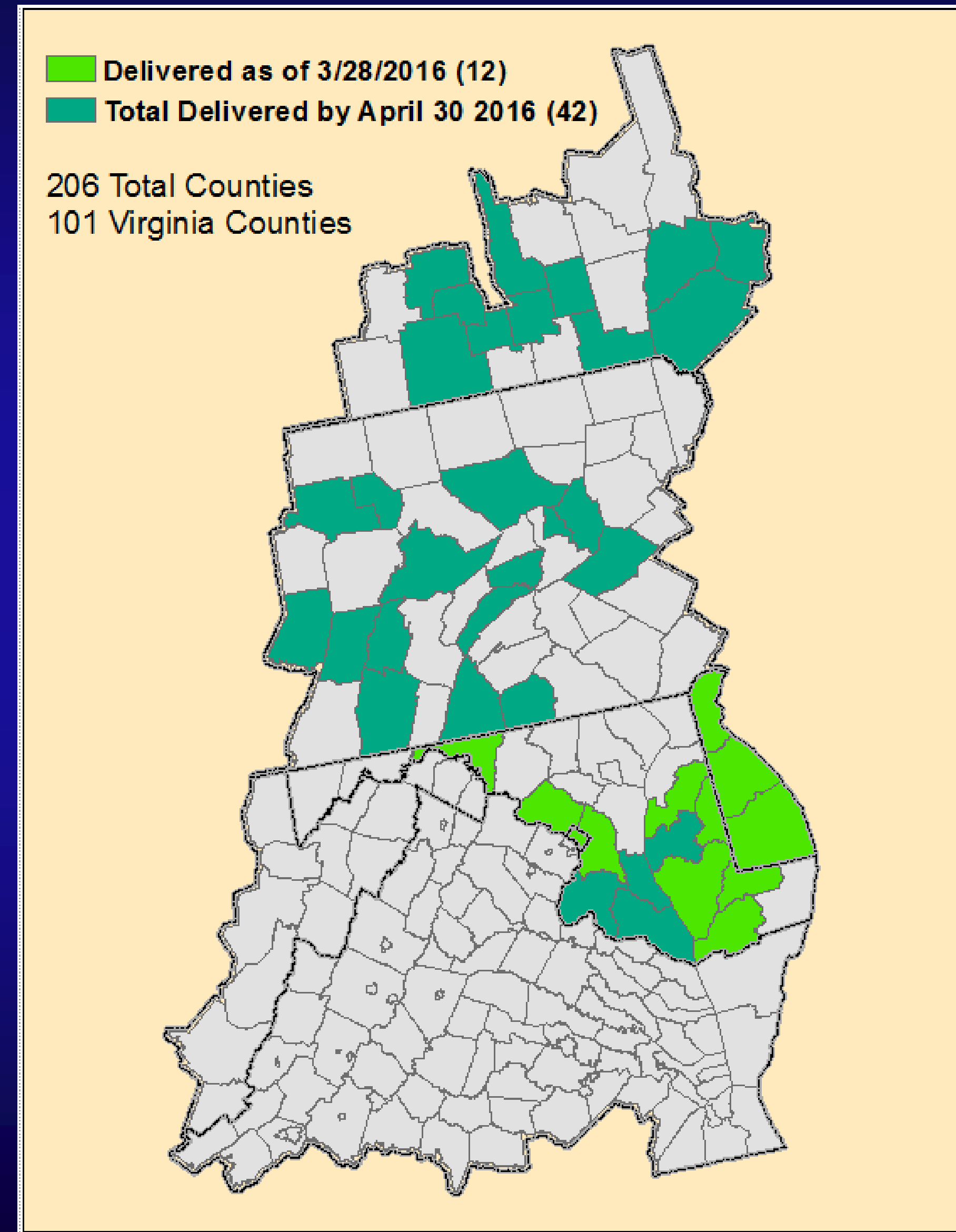


Land Cover March 2016 Completion Estimate



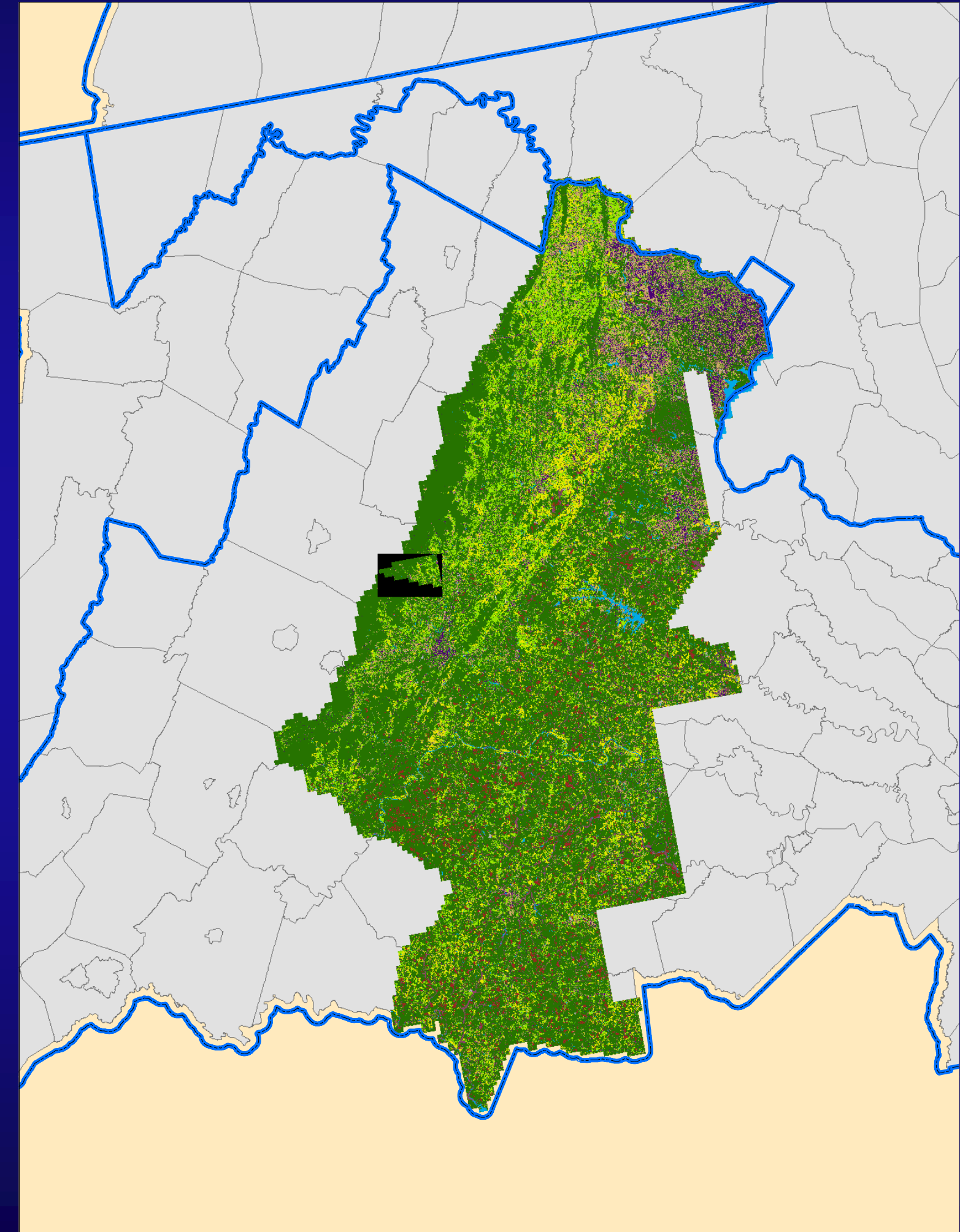
April 2016 Data Delivery Status

- All Delivered LC Data has been separated into Individual Class Masks (1,null) and Configured by County Using a Regional Model
- This Model can be Used for Future Deliveries.



April 2016 Data Delivery Status

- Virginia
 - Bay Area 2 North and South
 - 46 Individual Scenes
 - VA State Plane
 - Cell Size 3.28084 Meters Square
- Provisional data
 - “~ May be some changes in the future”
 - Hold until Final layer is Delivered.



Process Model Status

- Completed Regional Utility Models
 - Extract State Counties
 - Buffer County Shapes
 - Create all LC Masks for One County
 - Extract Regional NavTec to Counties
 - Extract Regional NavTec Rail to Counties

Process Model Status

- Regional Utility Models To be Completed
 - Combine Regional Water
 - Combine Regional Impervious
 - Combine Regional NavTec to Counties
 - Create Regional Wetlands
 - And Water Bodies (Separate Model)
 - Separate into County Folders
 - Needs Input from LUWG Expert Panel

Production Schedule (April '25 →)

- Models Still to be Finalized :
 - Impervious Model
 - Tree Canopy over Impervious
 - Forest Model / Impervious Density
 - Turf Grass
 - Wetland
 - Water
- Planning to Complete These by the Third Week of April

Outstanding Production Issues

- In Need of LUWG Guidance:
 - Nav Tec Land Use A&B Class Combining
 - Local Land Use Class Combining
 - Road Right of Way Questions
 - Fractional Model Questions
 - Application of Local Land Use Classes and Parcel Data
 - Turf Grass and Fractional Models are Dependent on These

Production Schedule (April '25 – Oct '16)

- Nav Tec Streets Issues to be Resolved April 8 – 18
 - Turf Grass Model Depends on Streets
- Cropland Data Layer Preparation: 4/11
 - Crop Pasture Model Depends on CDL
- Wetland Model Ready for Final Prep: 4/13
 - Depends on WLWG Expert Panel
 - Water Model Depends on Wetland Model

Production Schedule (April '25 →)

- Recap: Models Not Yet Begun (Awaiting Final Requirements):
 - Mixed Open
 - Ag Space
 - Crop Pasture
 - Fractional
 - Aggregation Procedure
 - Percentage Check
 - PA Wetland Burn in and VA Tree Canopy Enhancement
 - Post Local Review

Current Best “Final Delivery” Estimate

- October 2016 To Finish is Most Optimistic Estimate
- Will have a much firmer date by May after above questions and issues have been discussed and resolved

Contact Information:

Fred Irani and Peter R. Claggett

USGS- EGSC

Chesapeake Bay Program Office

410 Severn Ave, Suite 109

Annapolis, MD 21403

Fred Irani: 410-267-9845

firani@usgs.gov

Peter Claggett: 410-267-5771

pclagget@usgs.gov

<http://www.chesapeakebay.net>

<http://chesapeake.usgs.gov/>

<http://egsc.usgs.gov/>

